
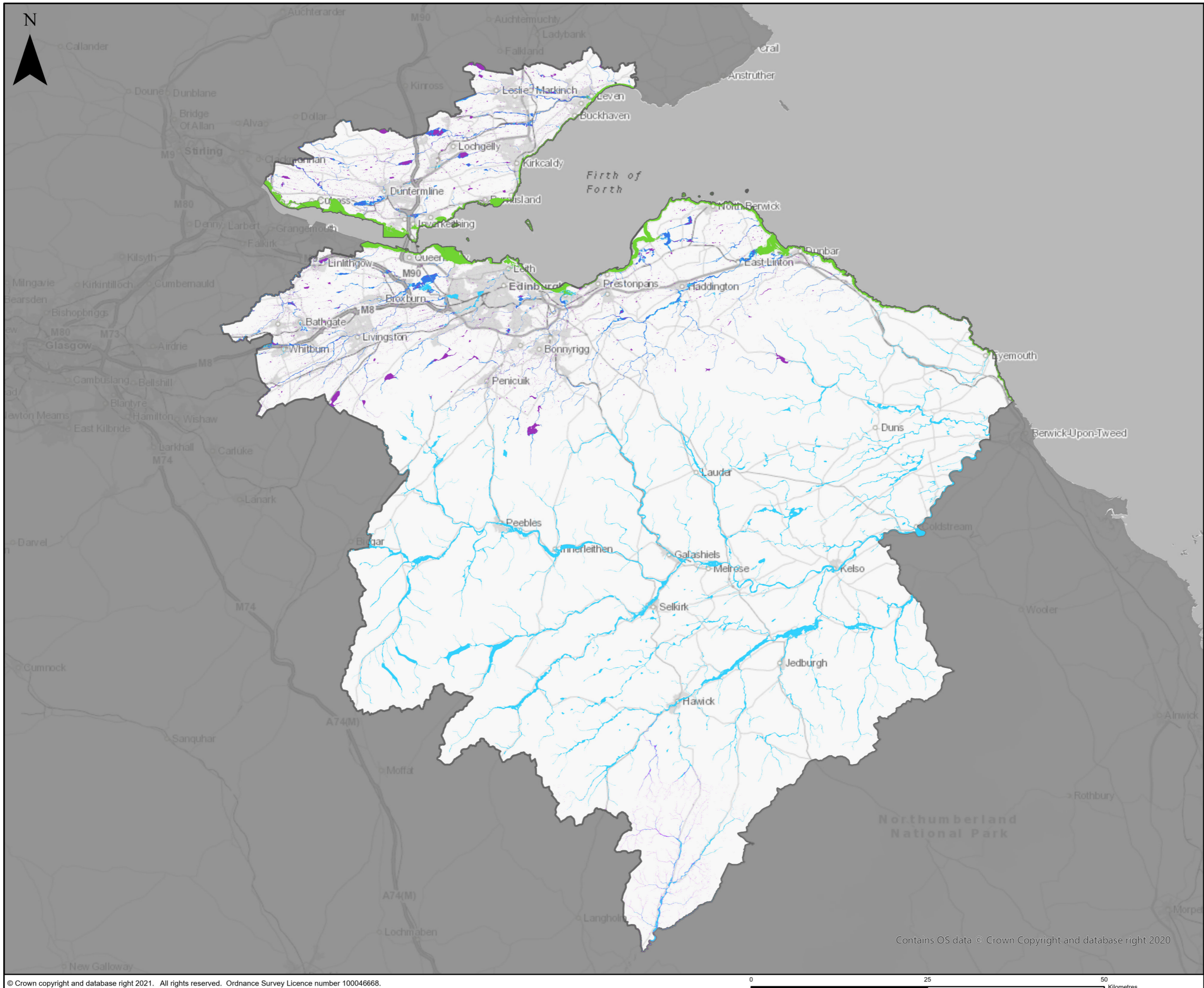


Contains OS data © Crown Copyright and database right 2020

Environmental Constraints			Client	Jacobs AECOM
<ul style="list-style-type: none"> Air Quality Management Areas (AQMAs) - July 2020 Battlefields Inventory Boundary Conservation Areas Core Paths Gardens and Designed Landscapes 	<ul style="list-style-type: none"> Geological Conservation Review Sites Nature Conservation Marine Protected Areas (NCMPA) National Cycle Network Routes National Nature Reserve (NNR) National Scenic Areas (NSA) 	<ul style="list-style-type: none"> Ramsar Special Areas of Conservation (SAC) Special Protection Areas (SPA) Sites of Special Scientific Interest (SSSI) World Heritage Site 		
			Project	<small>© Copyright 2021 Jacobs U.K. Limited. The concepts and information contained in this document are the property of Jacobs. Use or copying of this document in whole or in part without the written permission of Jacobs constitutes an infringement of copyright. Limitation: This drawing has been prepared on behalf of, and for the exclusive use of, Jacobs' Client, and is subject to, and issued in accordance with, the provisions of the contract between Jacobs and the Client. Jacobs accepts no liability or responsibility whatsoever for, or in respect of, any use of, or reliance upon, this drawing by any third party.</small>



Flood Areas & Likelihood

- Surface Flooding - Medium Probability
- Surface Flooding - High Probability
- Coastal Flooding - Medium Probability
- Coastal Flooding - High Probability
- River Flooding - Medium Probability
- River Flooding - High Probability

JACOBS AECOM

Client



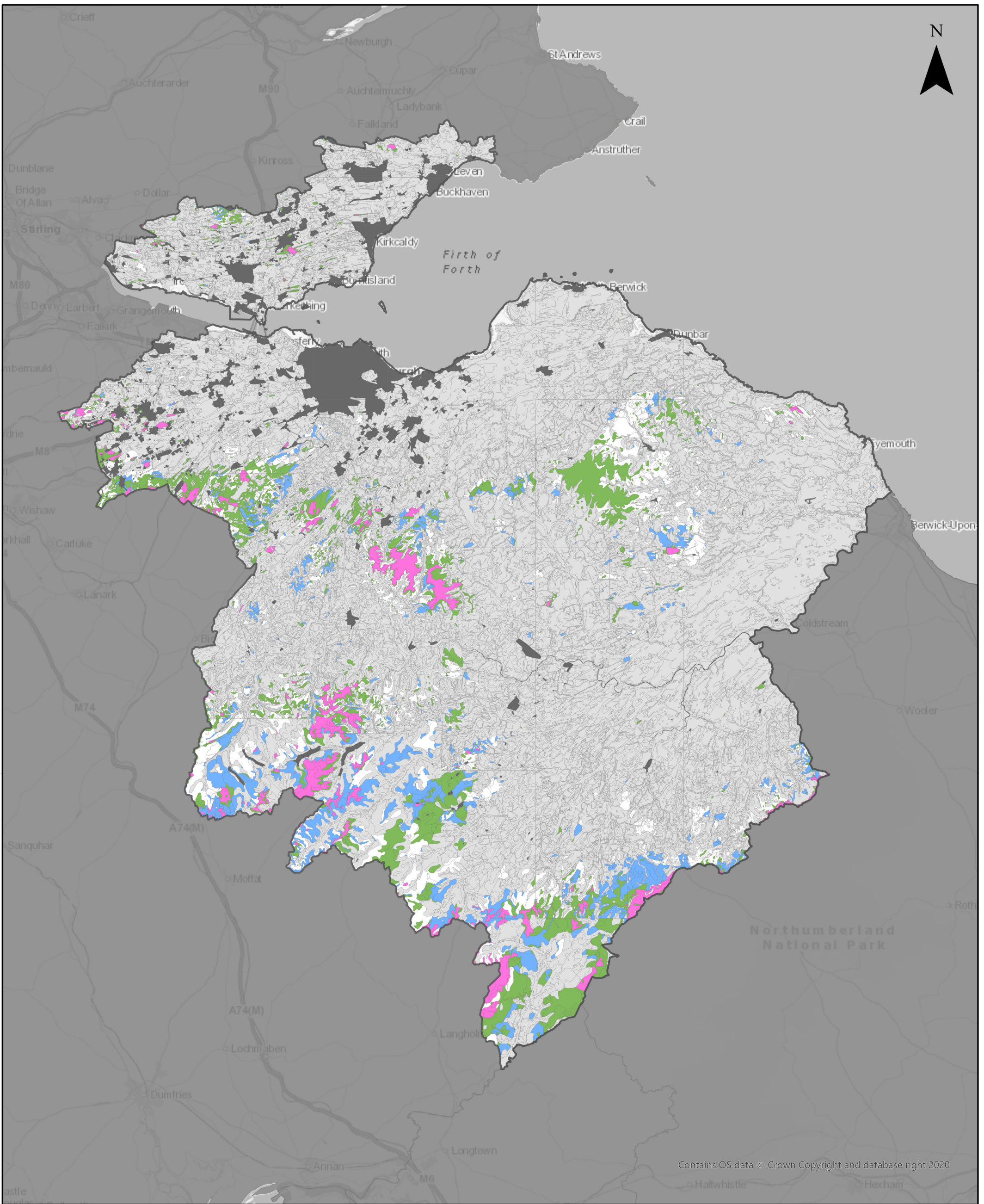
Project



Drawing title

Edinburgh and South East Scotland - Medium and High Flood Likelihood Extents

Contains OS data © Crown Copyright and database right 2020




Contains OS data © Crown Copyright and database right 2020

Carbon and Peatland Map 2016

- Non-Soil
- Mineral Soil
- Class 1
- Class 2
- Class 3
- Class 4
- Class 5

Client



TRANSPORT SCOTLAND
CORRIDHAIL ALBA

Project

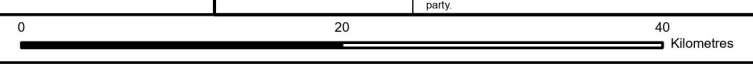


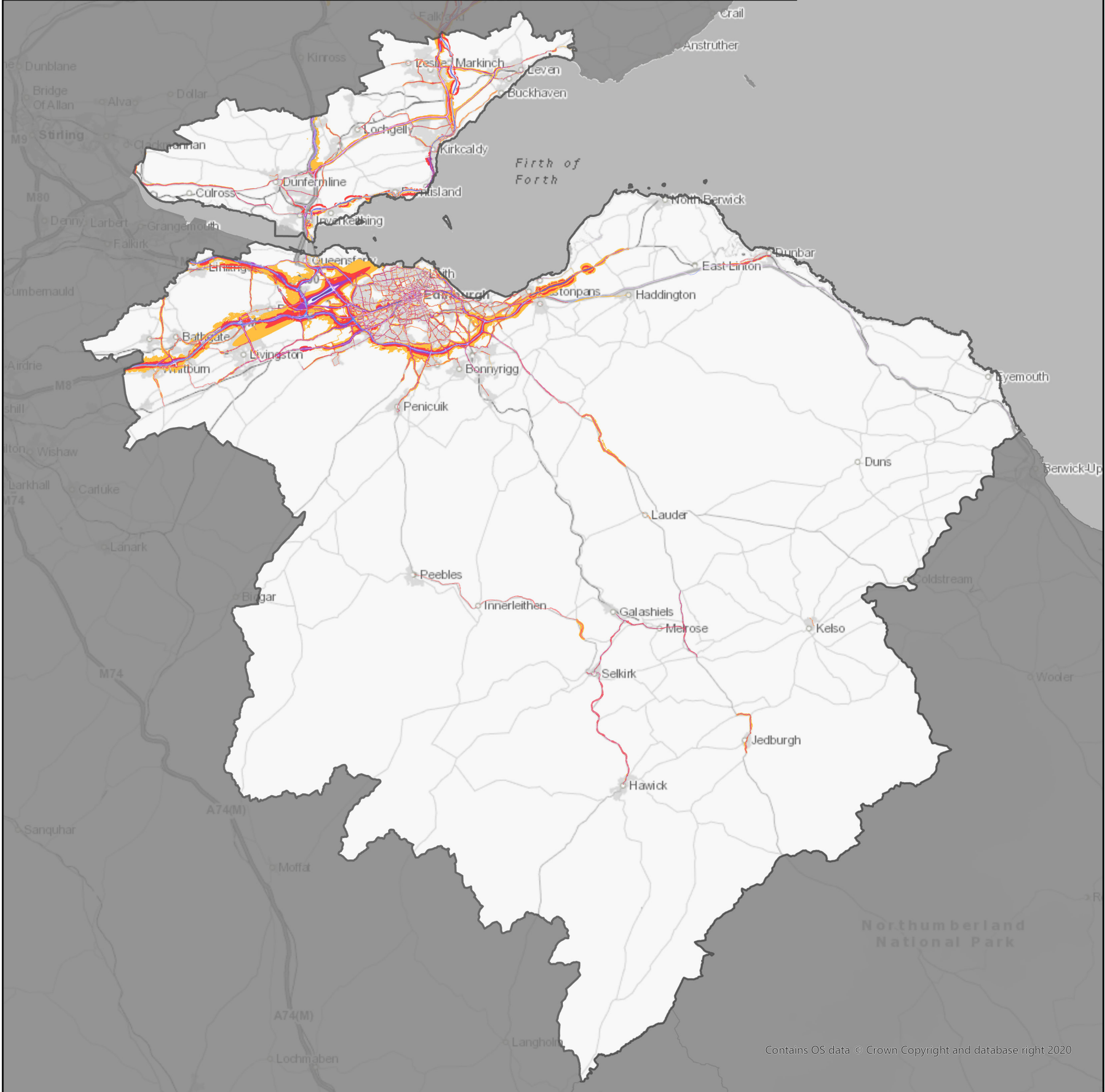
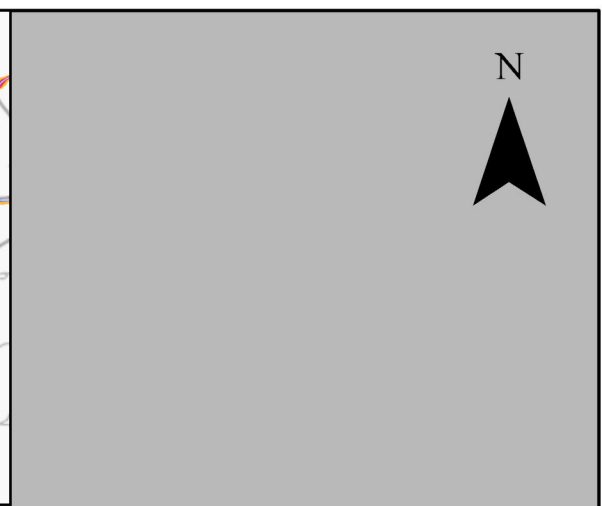
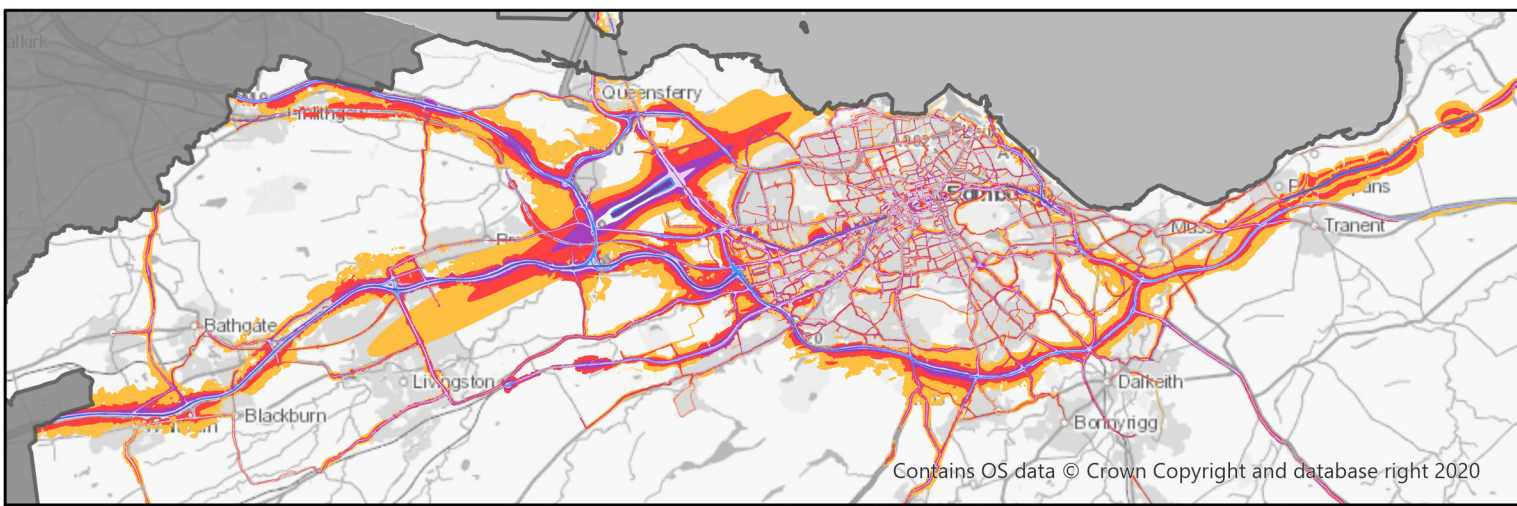
Client **JACOBS AECOM**

Drawing title

Edinburgh and South East Scotland - Carbon and Peatland Map 2016

© Copyright 2021 Jacobs U.K. Limited. The concepts and information contained in this document are the property of Jacobs. Use or copying of this document in whole or in part without the written permission of Jacobs constitutes an infringement of copyright. Limitation: This drawing has been prepared on behalf of, and for the exclusive use of, Jacobs' Client, and is subject to, and issued in accordance with, the provisions of the contract between Jacobs and the Client. Jacobs accepts no liability or responsibility whatsoever for, or in respect of, any use of, or reliance upon, this drawing by any third party.





Round 3 Noise (Day, Evening & Night)

- | | |
|--|---|
|  55 => x < 60 dB |  70 => x < 75 dB |
|  60 => x < 65 dB |  75 => x < 80 dB |
|  65 => x < 70 dB |  x >= 80 dB |

Client



Project



Jacobs AECOM

Drawing title

Edinburgh and South East Scotland - Round 3 Noise (Day, Evening & Night)

© Copyright 2021 Jacobs U.K. Limited. The concepts and information contained in this document are the property of Jacobs. Use or copying of this document in whole or in part without the written permission of Jacobs constitutes an infringement of copyright. Limitation: This drawing has been prepared on behalf of, and for the exclusive use of, Jacobs' Client, and is subject to, and issued in accordance with, the provisions of the contract between Jacobs and the Client. Jacobs accepts no liability or responsibility whatsoever for, or in respect of, any use of, or reliance upon, this drawing by any third party.