



Section 2.0 – Area Management Plan

Guidance Notes:

As required by section 3.3.1 of the CoCP an Area Management Plan for the construction works has been drawn up. This is an overarching site management plan covering general site operations and overall management of the construction works. It includes details of key personnel employed in the management of the project, controls with regard to general site layout and operations, and lighting including measures to mitigate light pollution, screening and working hours.



FORTH REPLACEMENT CROSSING – FIFE ITS

FRC/ITS/GC/AMP/01
Area Management Plan

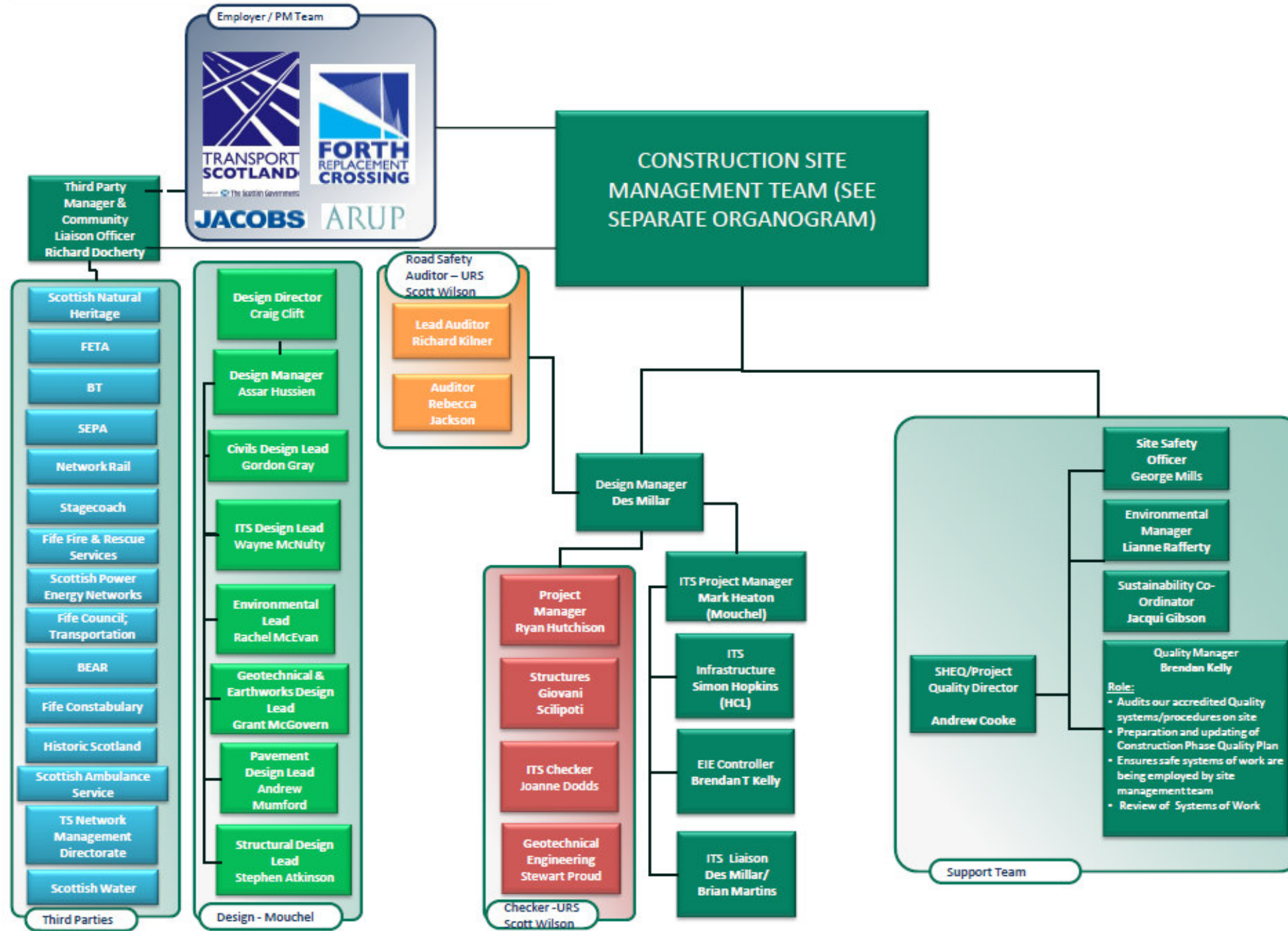


Contents

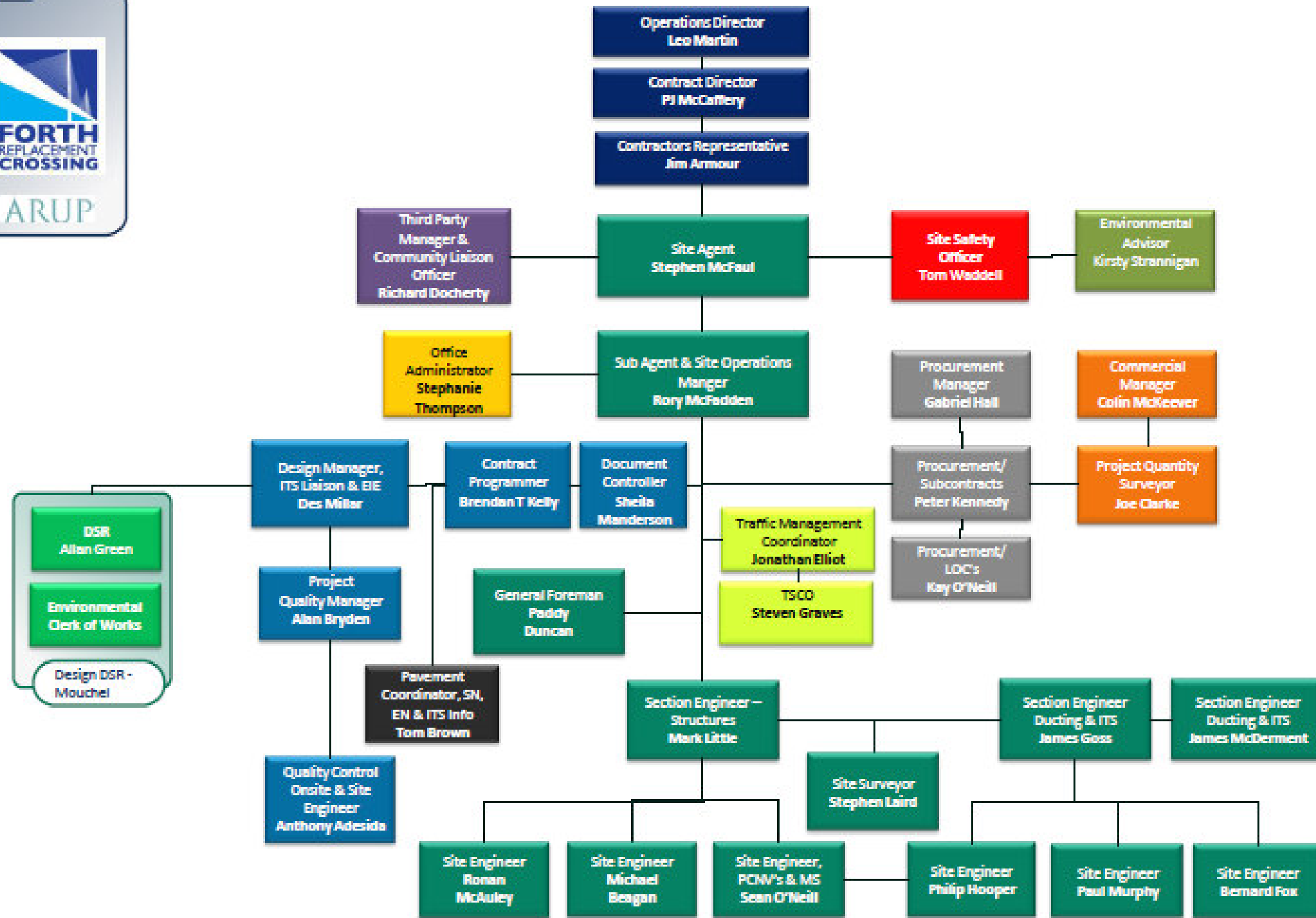
- 2.1 Contractors Management Team and Structure**
- 2.2 Working hours**
- 2.3 Construction Site Layout Compound Location Plan**
- 2.4 Construction Site Compound Setup Plan**
- 2.5 Fencing and Hoarding**
- 2.6 Use of Artificial Light**
- 2.7 Requirements associated with living accommodation**
- 2.8 Pest Control Procedures**
- 2.9 Site Security Procedures**
- 2.10 Clearance of Construction Site on completion of works**
- 2.11 Sustainability procedures to be implemented**
- 2.12 Specific Management Plans**

2.1 Contractor's management team and structure:

Forth Replacement Crossing – Fife ITS Project
PROPOSED ORGANISATION STRUCTURE



Forth Replacement Crossing – Fife ITS Project
CURRENT ORGANISATION STRUCTURE





2.2 Working hours:

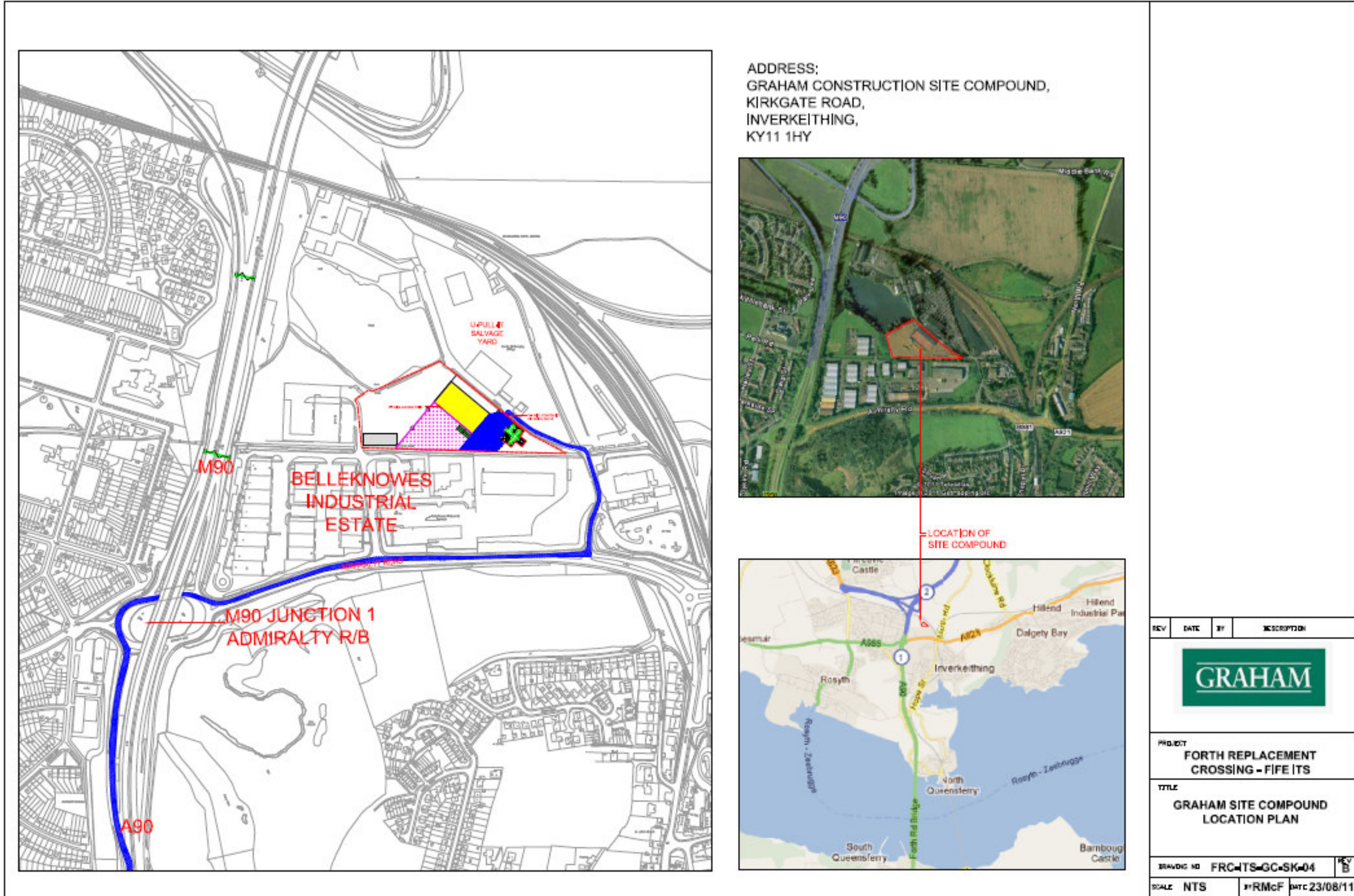
The site operational hours will be in accordance with the limitations set out in the CoCP. This sets out that the working hours will be Monday to Friday 0800 to 1900 hours and from 0800 to 1800 hours on a Saturday, a period of 30 minutes is allocated for starting up of operations each day to allow staff arrive to site. No heavy machinery will be operated within this start up period.

It is envisaged that the majority of the project will be completed within the hours specified above however there may be occasions where night work will be necessitated due to traffic management restrictions. Where it is envisaged that out of hours work will be required to take place Graham will demonstrate to the Employer and Noise Liaison Group that the reasons for the out of hours works are justified and a methodology approved for noise reduction to complete the works in place.

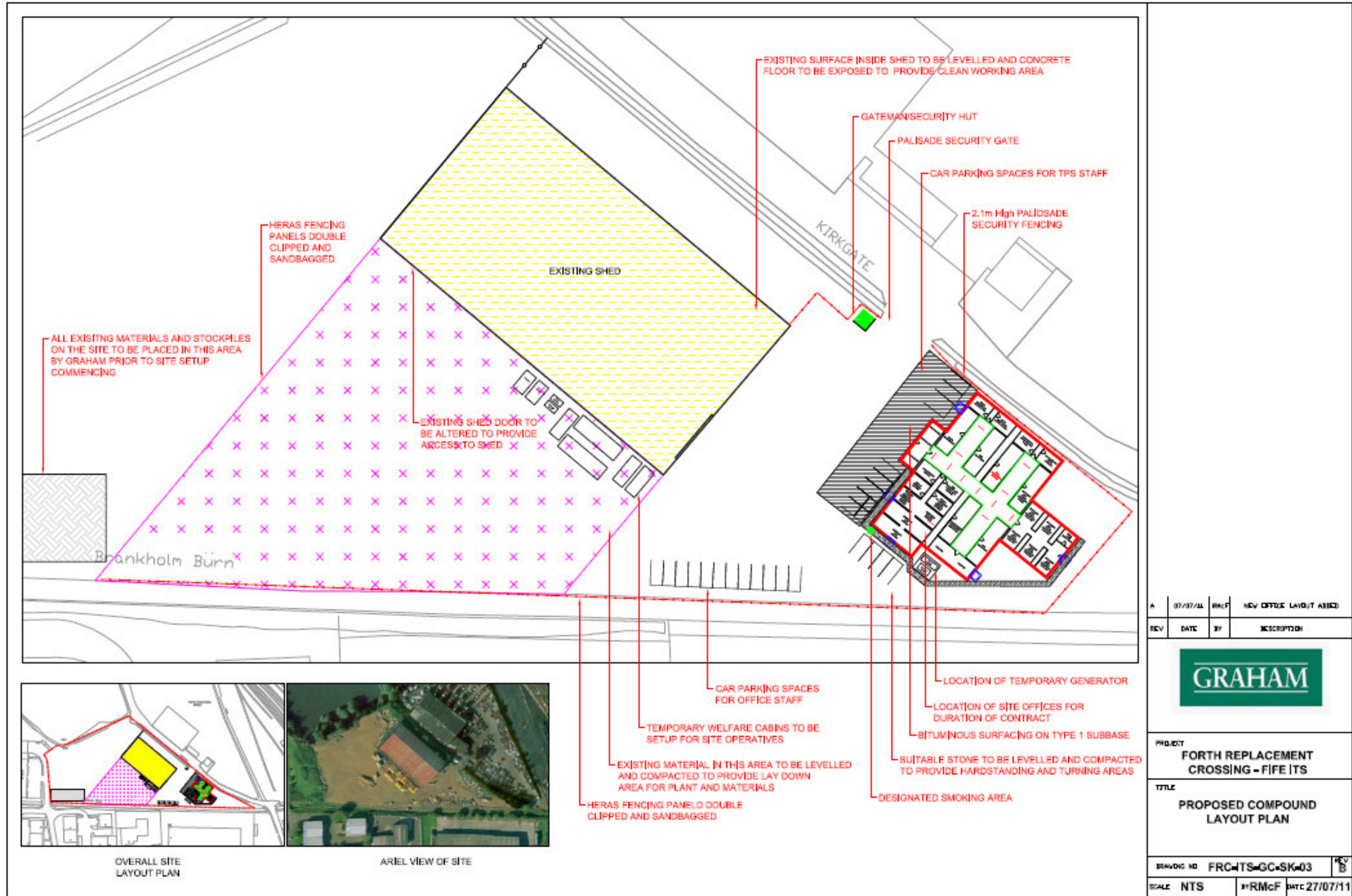
Graham will use the best practicable means to keep noise levels within the threshold for normal working hours which is set out in the CoCP.

Graham will notify the Employer's representative and the relevant local authority, together with Network rail and other statutory organisations as appropriate of the occurrence of any exceptional works which are required. The notification will incorporate as a minimum reasoning for the exceptional works and the actions required for rectification.

2.3 Construction Site Compound Location Plan:



2.4 Construction Site Compound Setup Plan:



REV	DATE	BY	DESCRIPTION
A	07/07/11	RMCF	NEW OFFICE LAYOUT ADDED



PROJECT
FORTH REPLACEMENT CROSSING - FIFE ITS

TITLE
PROPOSED COMPOUND LAYOUT PLAN

DRAWING NO	FRC-ITS-GC-SK-03	REV	B
SCALE	NTS	BY	RMCF
		DATE	27/07/11



OVERALL SITE LAYOUT PLAN



AERIAL VIEW OF SITE

Construction Site Compound Traffic Management Plan



LEGEND

- The Collingator: (Symbol)
- Flat All: (Symbol)
- Designated Protection Wayway: (Symbol)
- Designated Storage: (Symbol)
- Designated Material Storage: (Symbol)
- Designated Unloading Area: (Symbol)
- Concrete Washout Area: (Symbol)

SITE CONDITIONS

Designated storage	Y/N	Flat All	Y/N
Obstacles	Y/N	Risky environment	Y/N
Ground level	Y/N	Several openings at ground level	Y/N
Uneven ground conditions	Y/N	Several access points from Building Structure	Y/N
Way movement at the entrance	Y/N	Large numbers of people on site	Y/N
More than one form of work on site	Y/N		

RISK ASSESSMENT (based on site conditions)

The severity of any incident with this plan comes in contact with a person, a plant or severely damaging.

Likelihood of incident	Site status of incident	Time
High	High	High
Low	Low	Low
Medium	Medium	Medium

CONTROL MEASURES

Segregated site entrance for people and plant	Y/N
One way traffic routes to be used on site	Y/N
Physical barriers to separate pedestrian movement	Y/N
Barriers and warning signs to prevent road access from building structure vehicles onto plant movement route	Y/N
Turning circles to be used	Y/N
Reversed reversing lanes	Y/N
Clear protection of site with warning signs & barriers to be used for reversing operations	Y/N
Additional lighting	Y/N
Erection of information and warning signage	Y/N
Permitting access openings in the ground	Y/N
Speed limit imposed on site	Y/N
Prohibit and restrict traffic routes	Y/N
Instruct all site operatives to "KEEP CLEAR FROM MOVING PLANT"	Y/N

- A traffic management plan must be developed with consideration given to the following working issues. (This is not a full list of issues that consider)
- Planned and unplanned Pedestrian/Plant Interference
 - Location of site operative access routes around the site
 - Entrances/exits from welfare facilities
 - Entrances/exits from building structure
 - Unauthorized use of equipment
 - Plant access routes
 - Loading/unloading areas
 - One way/two way traffic routes both inside and outside building (Where applicable)
 - Turning circles
 - Reversed reversing lanes
 - Warning and information signage
 - Locations of scaffolds, cranes, MHE
 - Influence of noise from work activities
 - Sufficient levels of lighting
 - Location of scaffolding, MHE and excavators on plant movement route
 - Traffic route ground conditions
 - Traffic route widths
 - Traffic route edge protection
 - Planned and unplanned excavation/opening
 - Traffic routes at site entrance

SITE TRAFFIC MANAGEMENT PLAN

Site: FRC • Fife ITS
 Completed by: GMC
 Date Completed: 29-08-11
 (HS 2003 Issue 2)



Graham has appointed a Site Operations Manager who is responsible for the facilities and implementation of procedures which are governed by the requirements set out in the CoCP and has a duty to reduce disturbance associated with the sites day to day activities.

Graham will provide sufficient car parking facilities for construction vehicles and for construction workers including visitors for the site compound. Graham will proceed to construct the site compound in compliance with the requirements set out in the Environmental statement and CoCP.

Graham will endeavour to undertake the construction of the site compound in a manner which will meet the requirements set out in the Environmental Statement and CoCP.

In reviewing the layout appearance and operation of the construction site a number of aspects have been considered:

- The site office and compound layout will segregate construction traffic and pedestrian movement.
- It is company policy to ensure appropriate housekeeping is maintained on site(s) and the site compound.
- Adequate welfare facilities will be provided for all construction staff; toilets will be serviced and kept clean.
- Rubbish and waste material will be deposited in covered skips. It will be site policy to segregate waste which will help ensure some materials can be recycled. Skips containing food waste will be emptied at intervals not exceeding two weeks.
- Fencing and hoarding will be inspected daily, repaired and repainted as often as required by CoCP.
- Site accesses and access to site and site compound including roads in the vicinity of the site access points will be maintained clean as required by the CoCP.
- There will be dedicated sheltered smoking areas on site removed from site facilities with appropriate waste containers.
- Measures to reduce the occurrence of a fire including a Fire Safety Plan will be implemented. GRAHAM will comply with the requirements of the local fire authority.
- Employees and operators of GRAHAM will maintain a reasonable and appropriate standard of dress at all times and will refrain from using foul language or part take in displaying lewd or derogatory behaviour.

The installation of a GRAHAM site compound at this location will rejuvenate the existing condition of the site, the set up works will ensure the site becomes more secure and will also reinstate and improve the existing structures and layout of the site.



2.5 Fencing and hoarding:

Heras and palisade fencing will be fixed around the perimeter of the site compound whilst additional Heras fencing incorporating both blocks and clips will be located around each site location, to ensure no unauthorised access to the site take place.

Following completion of the works Graham will remove all temporary fencing and hoarding.

A PCNV was completed and approved for the site compound layout. No noise-attenuating structures were required to be implemented.

Smoking will also not be permitted along the site fencing. Designated smoking areas will be established in accordance with 3.5 of the CoCP.

Proposed Site signage will be agreed with the Employer prior to erection and will be in accordance with section 3.6 of the CoCP.

2.6 Use of artificial light:

Graham will ensure appropriate measures are implemented in accordance with the Scottish Government Guidance: Controlling Light Pollution and Reducing Lighting Energy Consumption

Site huts and storage facilities will be positioned in a manner as to facilitate as much natural lighting passing through the site as possible.

Artificial lighting will be positioned on the roof of the site offices and on the interior and exterior of the shed to ensure an adequate degree of illumination is dispensed on the site which will advance the safe movement of both site personal and authorised visitors. Positioning of lighting towers will be considered to minimise the occurrence of noise pollution to local residents. Any noise created by the operational use of the lighting towers will only be maintained during working hours unless under exceptional circumstances exist.

Lighting will be positioned and directed to reduce as much as reasonably possible nuisance to residents and distractions to passing drivers and members of the public.

As part of the consult and comply process GRAHAM will liaise with network rail to ensure works lighting will not disturb the operations of the rail network.

Graham will as reasonably and practicably as possible ensure that temporary traffic signals and lighting will be powered from mains supplies rather than portable generators. In circumstances where generators are required, the generators will be positioned in a location which reduces noise pollution to the surrounding environment.



Any temporary lighting to be used in relation to the traffic management for the scheme will be approved through the Traffic Management Working Group. This TWMG includes representatives from Fife Council. Temporary lighting for the site compound will be included in the method statement for the site compound construction which will be approved in accordance with the review procedure.

Also in accordance with section 3.5 of the CoCP GRAHAM will not operate any forms of audio equipment or loudspeakers, unless they are related to the construction works.

2.7 Requirements associated with living accommodation:

As part of the traffic management programme for the Fife ITS project there is the requirement for the presence of a number of traffic management personnel at all times during the duration of the project.

No accommodation units will be located at the site compound to accommodate the overnight presence of those traffic management personnel as the appointed subcontractor is positioned in Belleknowes Industrial Estate and has their own accommodation setup.

2.8 Pest control procedures:

In order to prevent the infestation of rodents and other vermin routine pest controls will be carried out by an appointed pest control service. The pest controller will outline the most prudent method of treatment and control during the initial inspection and subsequent visits to the site.

For the duration of the project various traps and auxiliary pest control procedures will be enacted to refrain any build up of vermin, an accompanying COSHH assessment will be provided by the pest controller in an event where pesticides may need to be used.

Food waste in covered skips will be emptied by the appointed service provider in intervals not exceeding two weeks.

2.9 Site security procedures:

The perimeter of the site is protected using Heras and palisade security fencing and a palisade gate. At all times, except during operational hours, the gate will be kept closed to dissuade unauthorised personal from entering the site.

During operational hours a gate man will be positioned at the entrance to the site to determine the identity of visitors to the site additionally as part of the site rules all visitors must sign into the visitors book which is placed in the site office reception area.



The site will be monitored after operational hours Monday to Sunday by security personal. All hand held equipment will be kept safely in secure storage facilities and any additional equipment which cannot be placed into the storage facilities will be locked up with additional anti-theft screens placed on them.

During the course of the project traffic management personal will be monitoring both the site locations and the restricted laneways every two hours.

If required CCTV will be placed on site to provide a greater degree of security to both staff and equipment.

2.10 Clearance of construction site on completion of works:

As the project progresses work areas will be cleared and cleaned, this may include areas adjacent to the site which has become untidy due to the construction activities. Site access and roads are also required to be cleaned which are in the vicinity of the site and site compound.

If it is found that any contamination has occurred due to process involved in the construction, detailed remedial measures will be enacted to rectify the situation. These will be set out in the relevant environmental method statements.

As part of GRAHAM construction environmental obligations and best practice management the company has an obligation to leave the site in a similar manner as it was found. With the completion of the works a detailed study will be completed to ensure that no materials or objects are left which could contribute to any undue environmental harm.

2.11 Sustainability procedures to be implemented:

Land use: It is a major prerogative of the Graham team to minimise the amount of land that is required and disruption that is caused during the construction process, as the area is of strategic importance to the local transportation system. This is why the majority of works will be conducted from hard shoulder and not from the adjoining land. TM will be used to control the traffic to reduce the impact on the transportation system.

Landscape: As part of the construction works there is a requirement for the removal of a limited amount of hedgerows and trees this however will be offset by the planting of approx 17,000m² of grass seed and approx 8000 Nr plants & trees.

Ecology and Biodiversity: With an increased amount of planting incorporated into this project this will endeavour to attract birds, butterflies and other wildlife and is contained within a local biodiversity action plan.

Archaeology and cultural heritage: As part of the Environmental Management Plan (EMP) there is a requirement for the inclusion of a Cultural Heritage Management Plan. This document contains the procedures which should be implemented during the construction works.



Water: During construction water usage on site will be metered and monitored throughout. The environmental site management plan and applicable environmental method statements includes measures to control impacts of the construction process on the groundwater system.

Energy: Fuel bills will be monitored to ensure that there is no unnecessary energy wastage from powering the site. All electrical devices will be turned off after site hours. Energy saving settings will be chosen on all computers and printers.

Material use and waste management: Materials will be stored securely in the site compound to avoid wastage through damage. All timber used on site will be sourced from forest stewardship council certified. The site waste management plan outlines the items to be reused or recycled and provide details on specific disposal and segregation mechanisms.

2.12 Specific management plans:

The other specific management plans included within this EMP are as follows:

- Noise and Vibration Management Plan.
- Dust and Air Pollution Management Plan.
- Geology, Land Contamination and Waste Management Plan.
- Surface and Ground Water Management Plan.
- Ecological Management Plan.
- Agricultural Management Plan.
- Cultural Heritage Management Plan.
- Landscape Management Plan.
- Pollution Incident Response Plan.