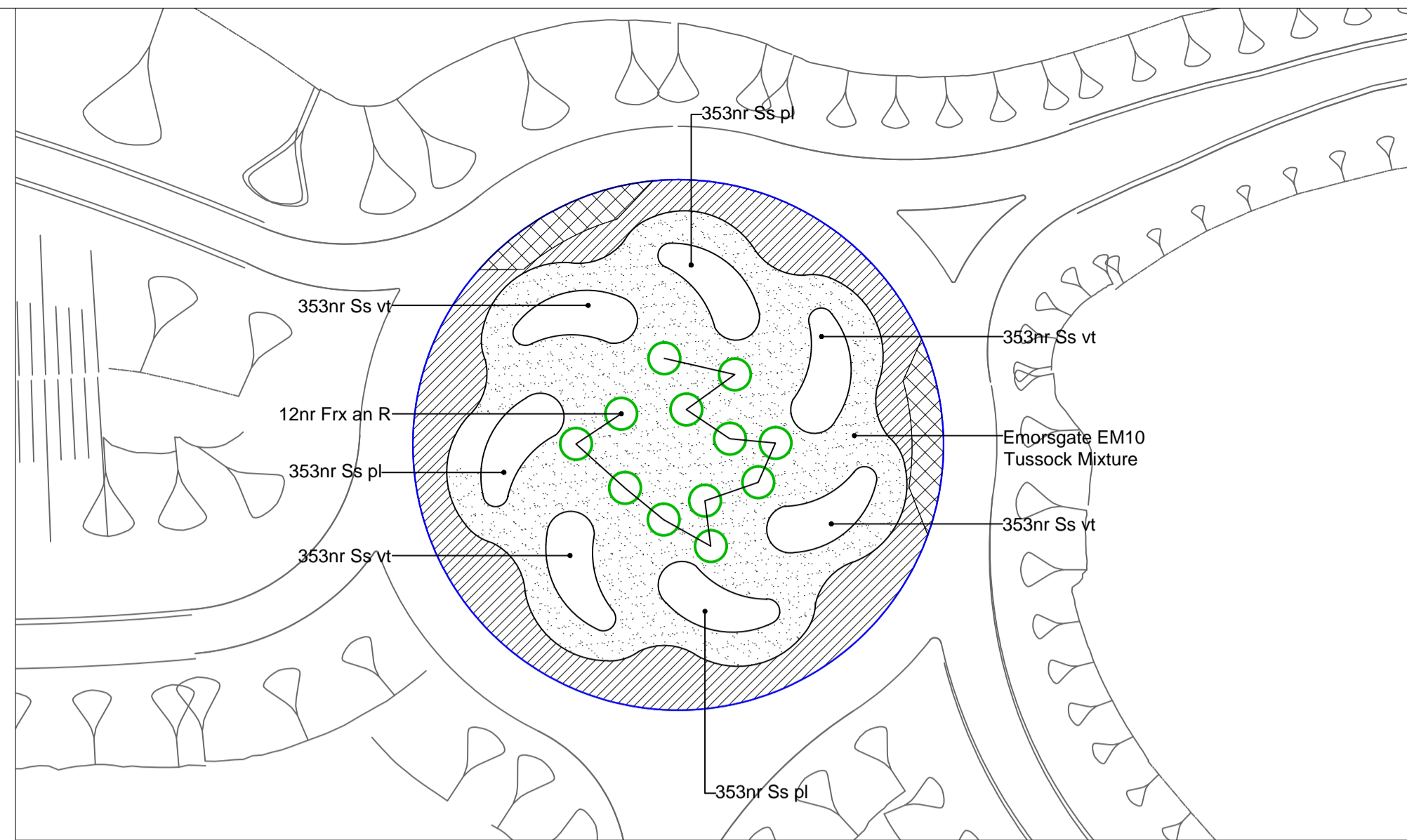
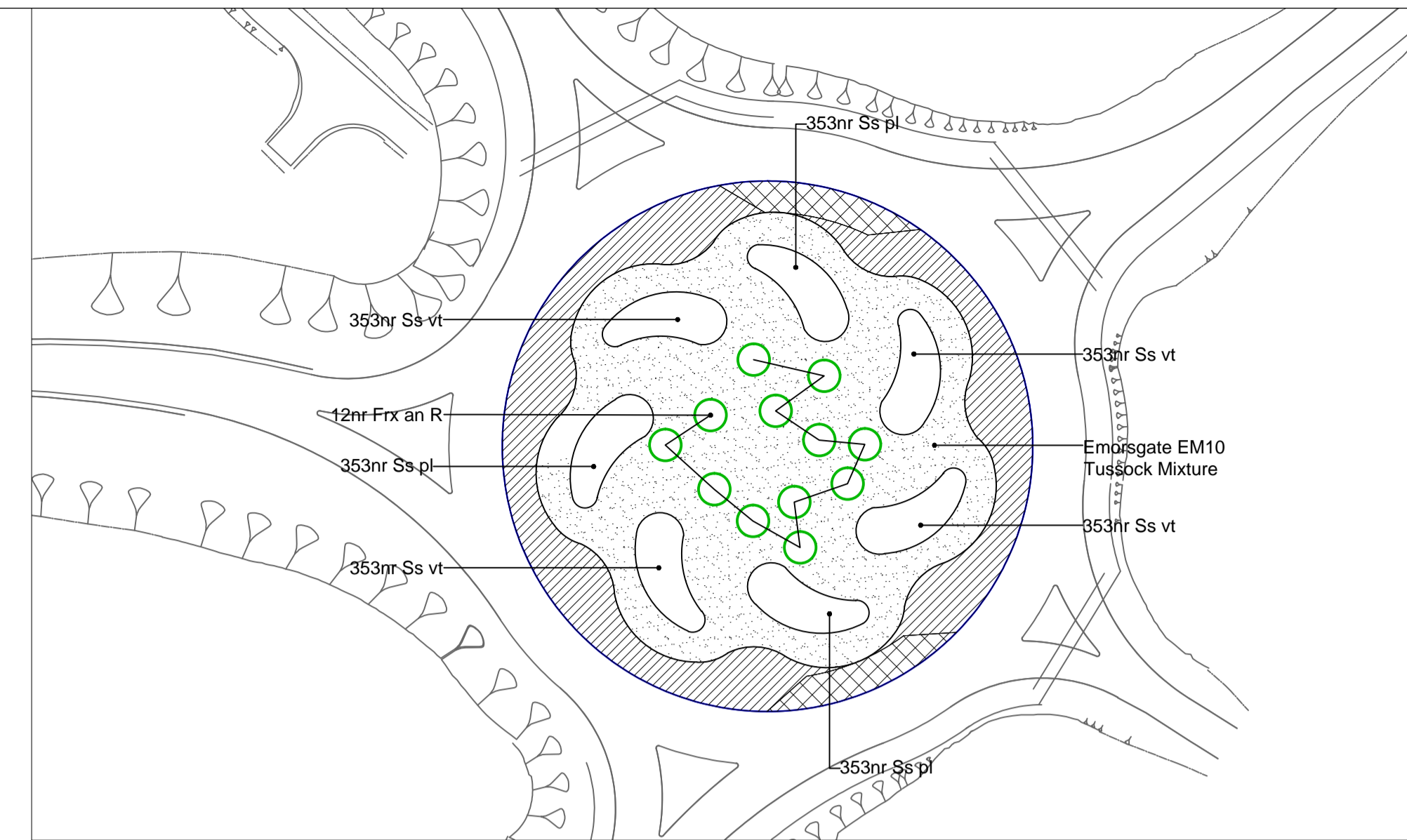


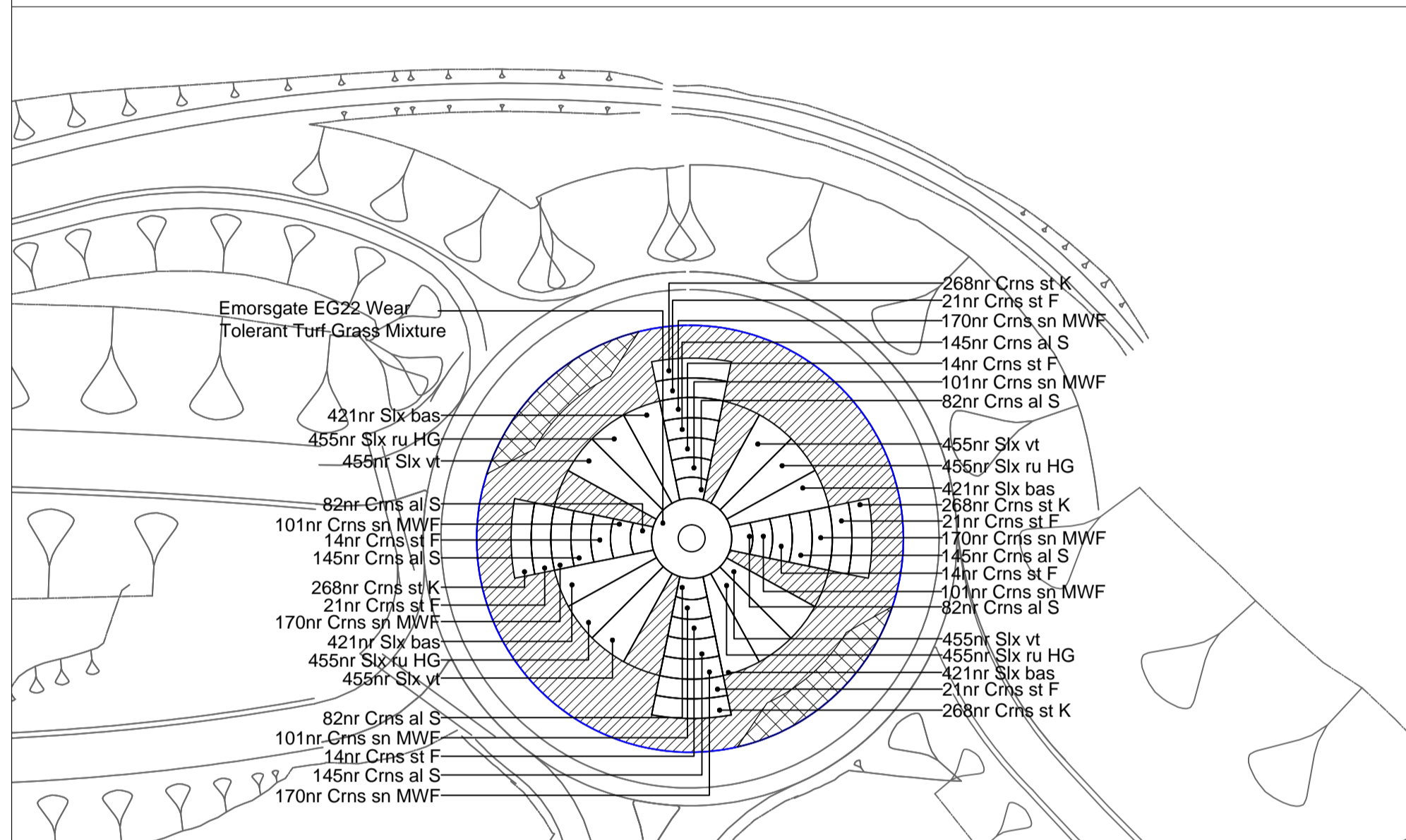
1. BAILLIESTON



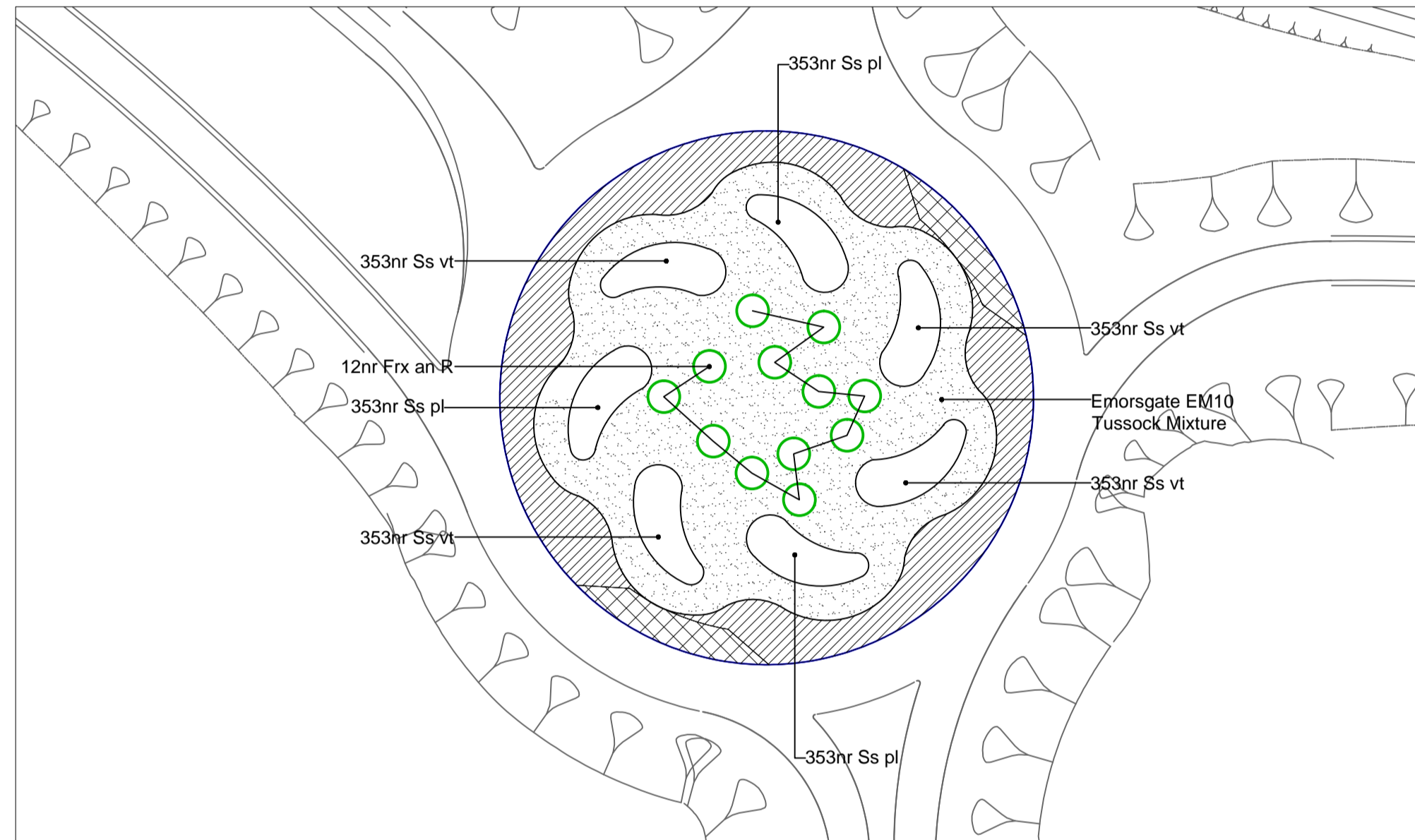
4. CHAPELHALL



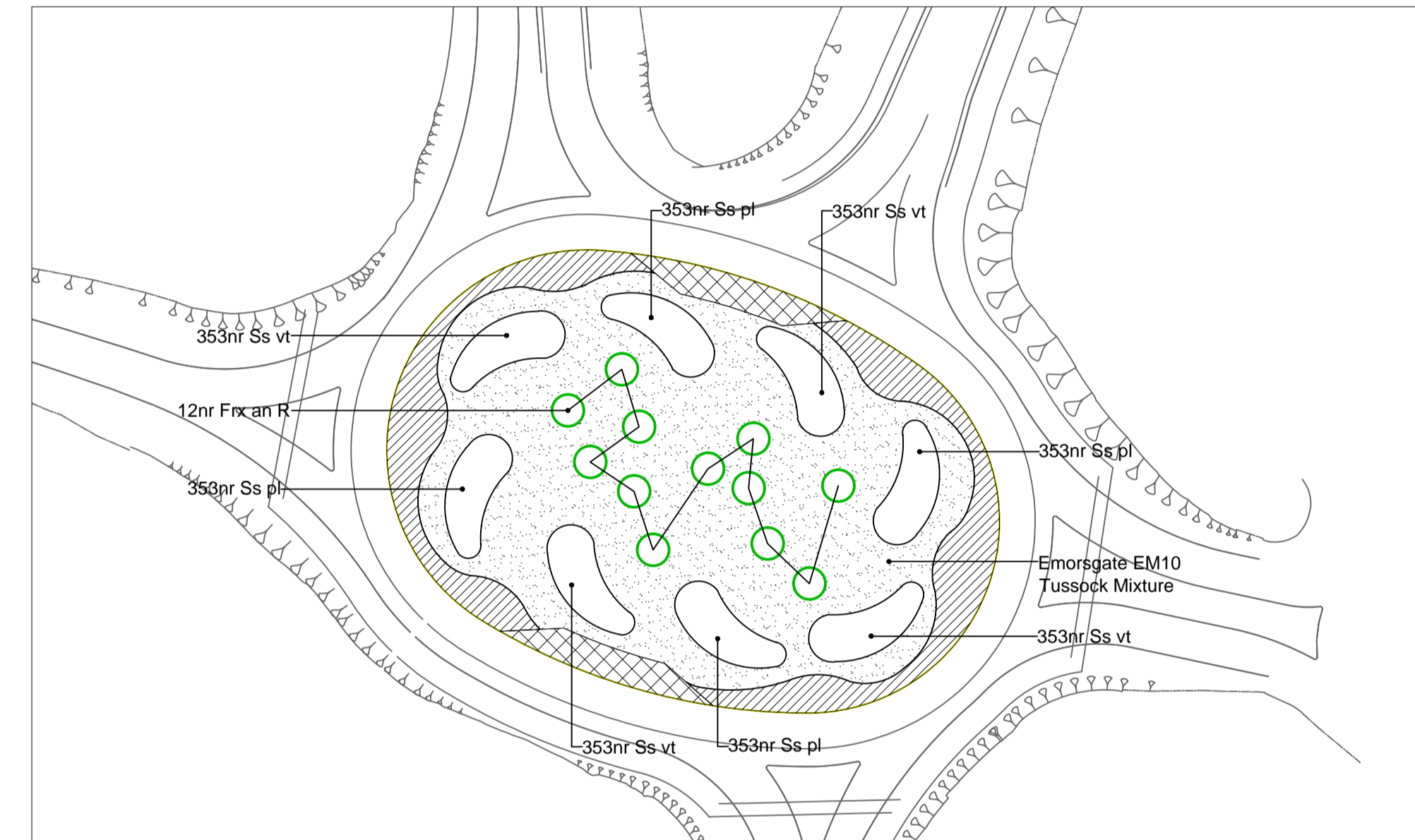
6. CHAPELHALL



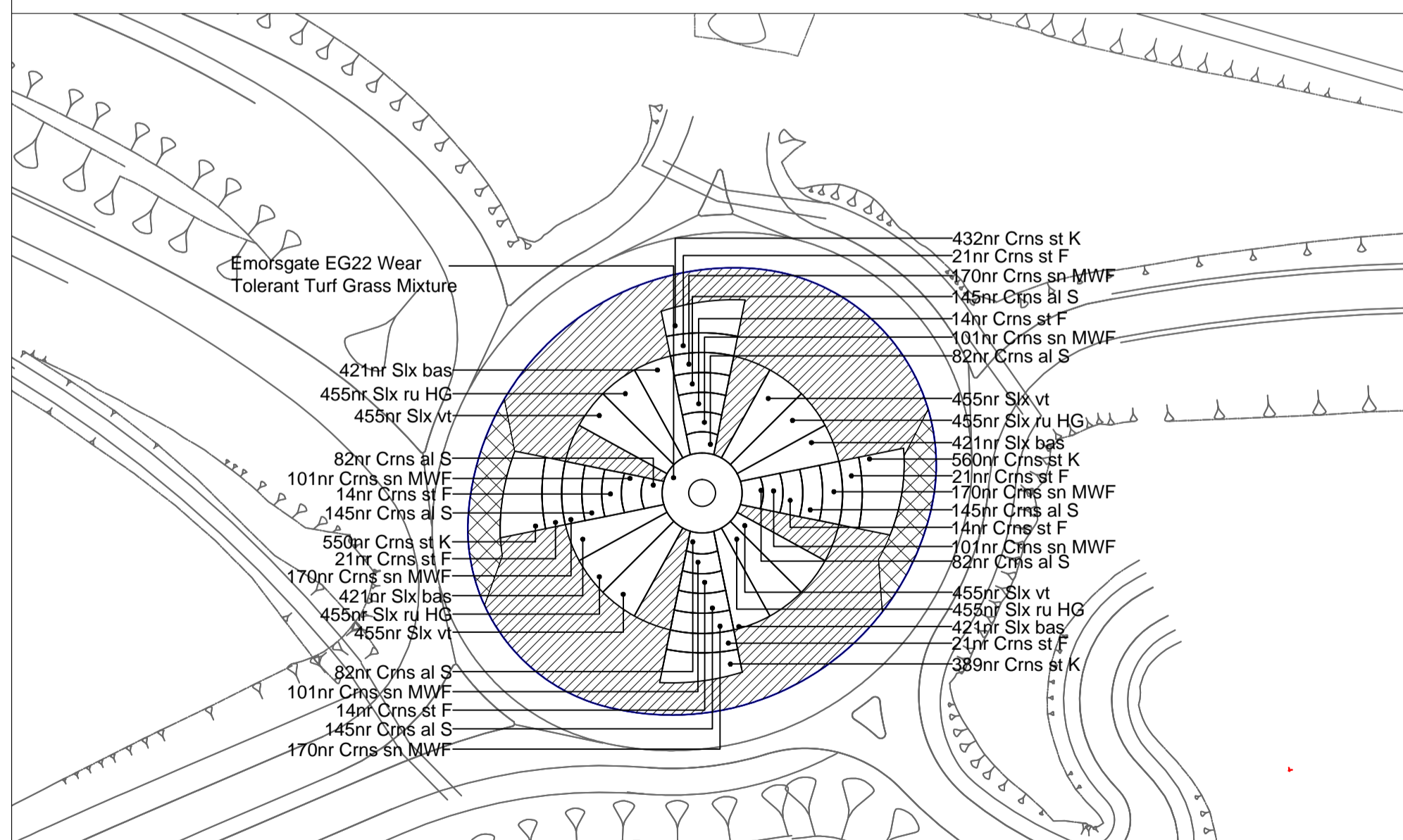
2. EUROCENTRAL



5. CHAPELHALL



7. CHAPELHALL



3. EUROCENTRAL



LAYOUT

CLIENT



An agency of The Scottish Government

PROJECT TITLE

**M8 M73 M74**  
Motorway Improvements

02	SASA TSUBOIANA SUBSTITUTED WITH SASA PALMATA	SH	SWG	SWG	08/11/12
01	CONTRACT ISSUE	SH	SWG	SWG	21/06/12
REV	REVISIONS	BY	CHKD	APP'D	DATE
	AMENDMENTS				

This map is based on Ordnance Survey material with the permission of Ordnance Survey on behalf of the Controller of Her Majesty's Stationery Office Crown Copyright. Unauthorised reproduction infringes Crown copyright and may lead to prosecution or civil proceedings. Scottish Executive 100046668 2011

DESIGN BY:	FF	CHECKED BY:	SWG
DATE:	May 2012	DATE:	May 2012
DRAWN BY:	SH	APPROVED BY:	SWG
DATE:	May 2012	DATE:	May 2012

DRAWING STATUS: CONTRACT

ENGINEER



IN ASSOCIATION WITH



DRAWING TITLE

**Contract Drawing**  
**(Ornamental) Roundabout**  
**Planting Details**

SCALE AT A1	DRAWING NO	REV
1:2500	M8/C/3000/026	02