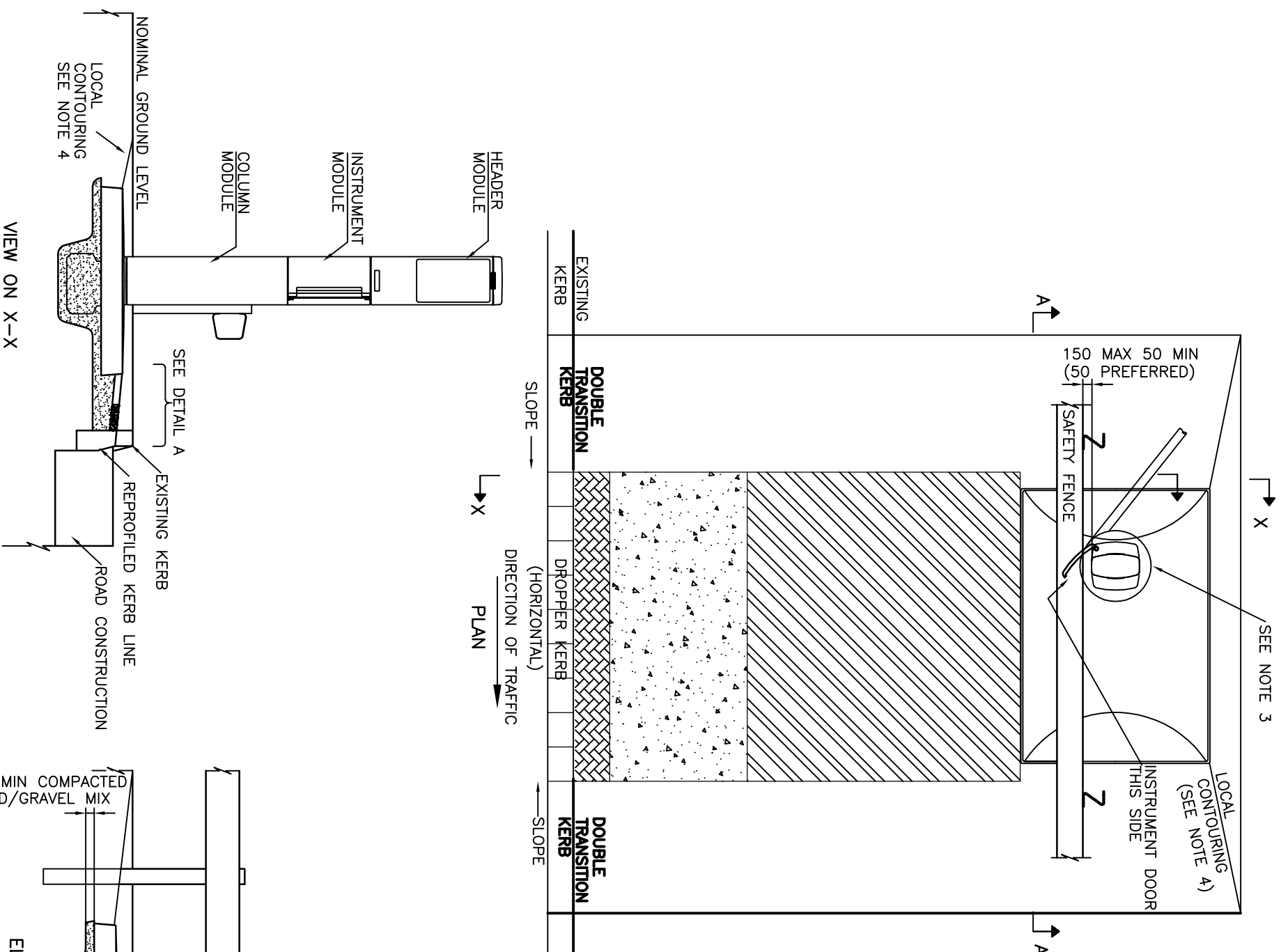
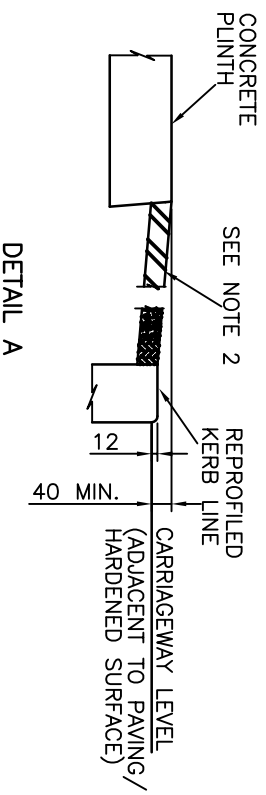


NOTES

1. SEE GENERAL INSTALLATION NOTES ON DRAWING NDX1049-02no\_01.
2. AT KERBED SITES, THE TOP OF THE RAMP SHALL BE LEVEL WITH THE ADJACENT PLINTH EDGE, WHICH SHALL BE AT A MINIMUM HEIGHT OF 40mm ABOVE CARRIAGEWAY LEVEL. WHERE POSSIBLE, THE ACCESS RAMP UP TO THE PLINTH SHALL HAVE A GRADIENT OF NO GREATER THAN 8% AND NO LESS THAN 2%. THERE SHALL BE AN UPSTAND OF 12mm BETWEEN THE CARRIAGEWAY AND THE BOTTOM OF THE RAMP.
3. SEE NOTE 3 ON DRAWING NDX1049-02ga\_02
4. LOCAL CONTOURING TO BE PROFILED DOWNWARDS TO A LEVEL 12mm BELOW THE EDGES OF CONCRETE PLINTH.
5. DUCT TO EXTEND MINIMUM OF 200mm BEYOND EDGE OF PLINTH (FOR SITES WITHOUT EXISTING DUCTS).
6. 50mm PAVING OR EQUIVALENT HARDENED SURFACE (ON 75mm MINIMUM SAND/GRAVEL MIX AND THEN COMPACTED). A CONCRETE OR ASPHALT SURFACE SHALL BE LAID AT LAYBY SITES WITH RISK OF HEAVY VEHICLE OVERRUN.
7. DROPPED KERB WITH TACTILE BLISTER PAVING (TONAL CONTRAST, EXCLUDING RED)
8. WHEN INSTALLED ON AN EMBANKMENT, A HANDRAIL MAY BE REQUIRED (NDX1070-02ga\_13). ADVICE AS TO WHETHER A HANDRAIL IS REQUIRED SHALL BE SOUGHT FROM THE OVERSEEING ORGANISATION.



LEVELLED HARD STANDING
RAMP SURFACE(GRAIDENT 2-8%)
TACTILE BLISTER PAVING(IF APPLICABLE)



Note:  
The NDX series of drawings represents non site specific installations of standard equipment and site layouts.

This drawing was generated on computer and must not be manually updated

TYPICAL ERT 354 VERGE WITH SAFETY FENCE, WITH KERB - TYPE D, Q

ORIGINAL DRAWING SIZE: 297 x 420	DRN	A.N.O.	CHKD	A.W.	APPD/DATE
ALL DIMENSIONS ARE IN MM	E	UPDATED SEE REV. SHT.			BD 30/11/09
TOLERANCE +/- 1 UNLESS OTHERWISE STATED	D	REDAWN			BD 13/10/09
THIRD ANGLE PROJECTION DO NOT SCALE	ISSUE	AMENDMENTS			SCALE
	C	GENERALLY UPDATED			N.T.S.
	DRG. NO.	NDX1049-02ga			SHT. NO.
					6 of 18