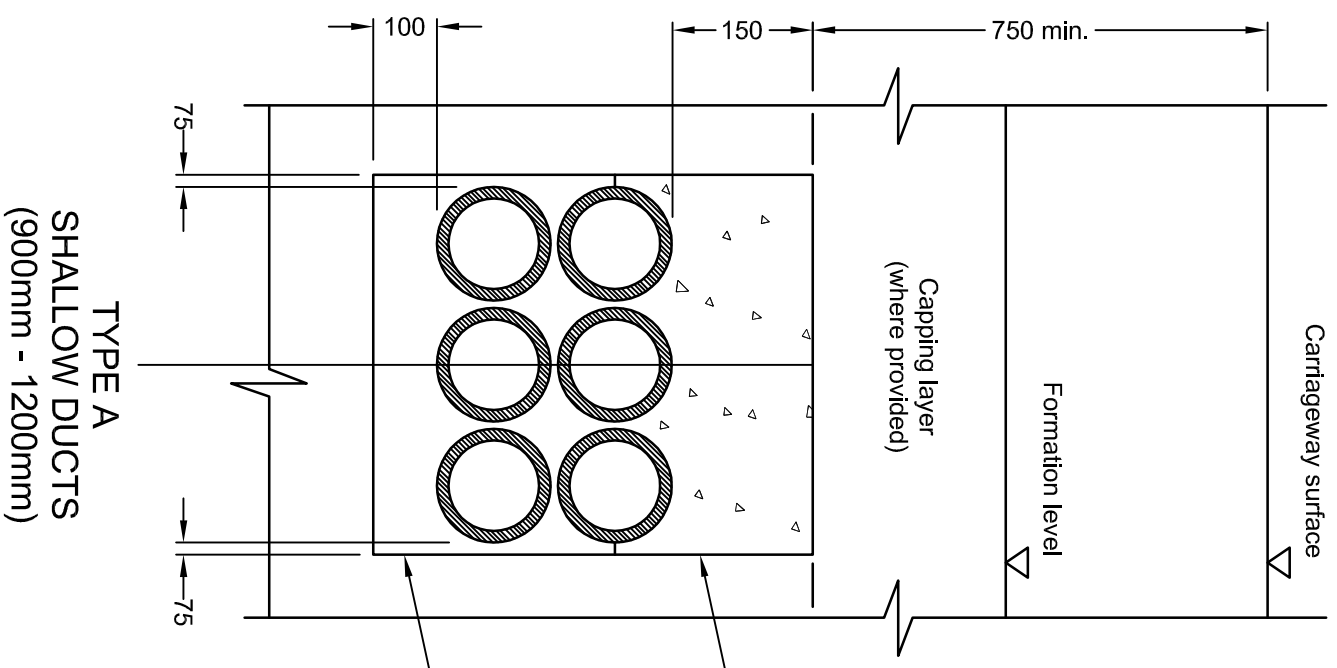
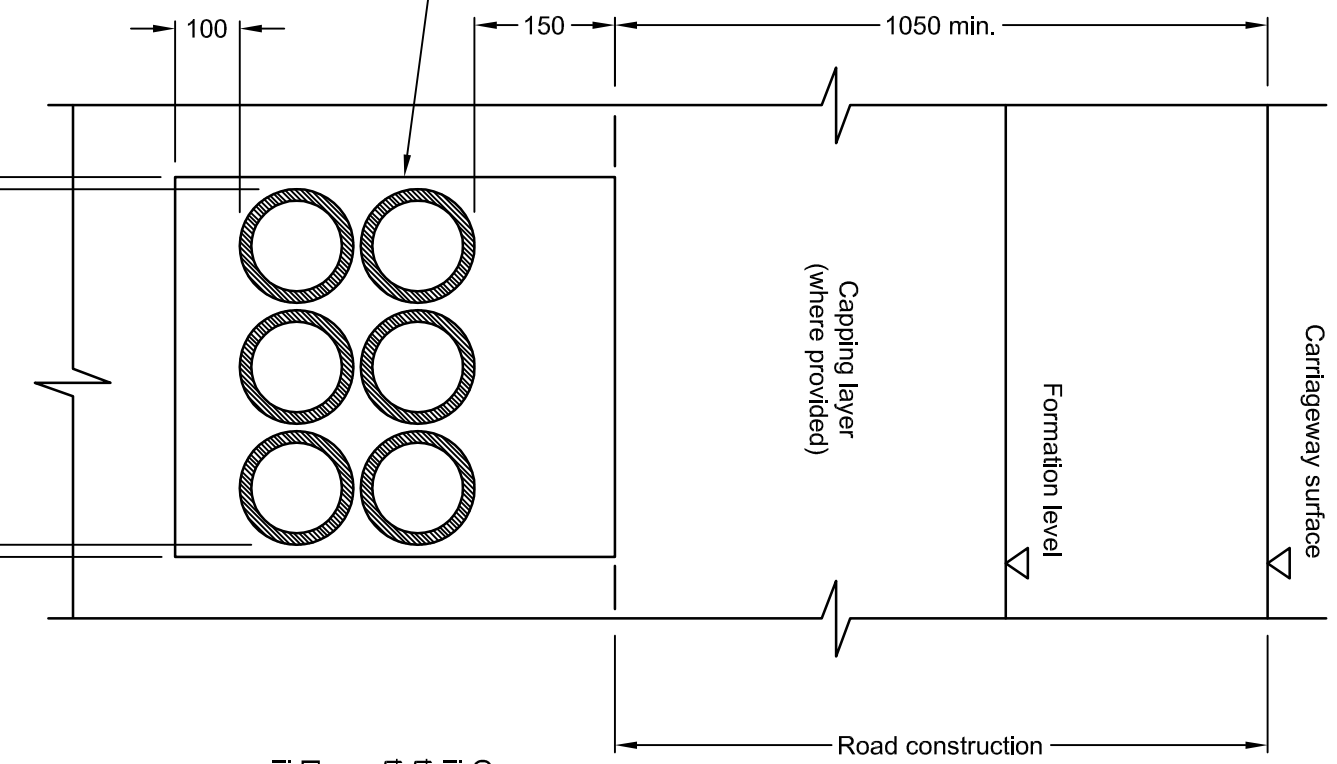


Note:
The NDX series of drawings represents non site specific installations of standard equipment and site layouts.

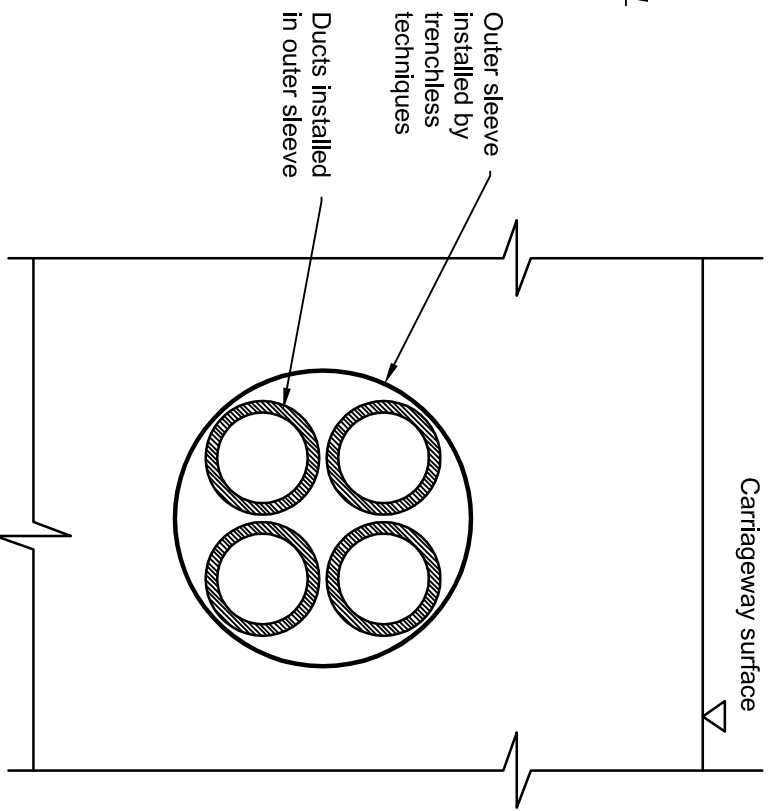


Mix ST2 concrete to SHW 503.6 (ii)

Granular material to SHW clause 503.3 (i)



TYPE B
DEEP DUCTS
(< 120mm)



TYPE C
DUCTS INSTALLED USING
TRENCHLESS TECHNIQUES

- NOTES**
- Types A and B apply to ducts installed during construction, or reconstruction or major maintenance, of the road.
 - Ducts installed beneath existing carriageways shall be installed using trenchless techniques with at least 300mm clearance between the ducts and the road construction and shall comprise of 4 no. 100mm ducts within a sleeve.
 - The depth of cross-carriageway ducts will be dependant upon the location of drainage pipes, as drainage pipes are installed to strictly defined levels. This will generally result in ducts being installed deeper than the drainage pipes. On existing motorways a line and level survey of existing drainage should be undertaken before the depth of ducts is decided.
 - Backfilling shall be in accordance with SHW Clause 505.

This drawing was generated on computer and must not be manually updated

TITLE	TYPICAL DUCT INSTALLATION - TRANSVERSE DUCTS
-------	--

ORIGINAL DRAWING SIZE: 297 x 420	DRN	C.S.G.	CHKD	B.D.	SCALE
ALL DIMENSIONS ARE IN MM	DATE	25.09.01	DATE	29.09.01	N.T.S.
TOLERANCE +/- 1 UNLESS OTHERWISE STATED	DRG. NO.	NDX1063-00dt			SHT. NO.
THIRD ANGLE PROJECTION DO NOT SCALE	ISSUE	AMENDMENTS	APPD/DATE		
	B	REDDAWN	BD 13/10/09		
	A	FOR INFORMATION	BD 09/02/03		
	C	UPDATED SEE REV. SHT.	BD 30/1/09		