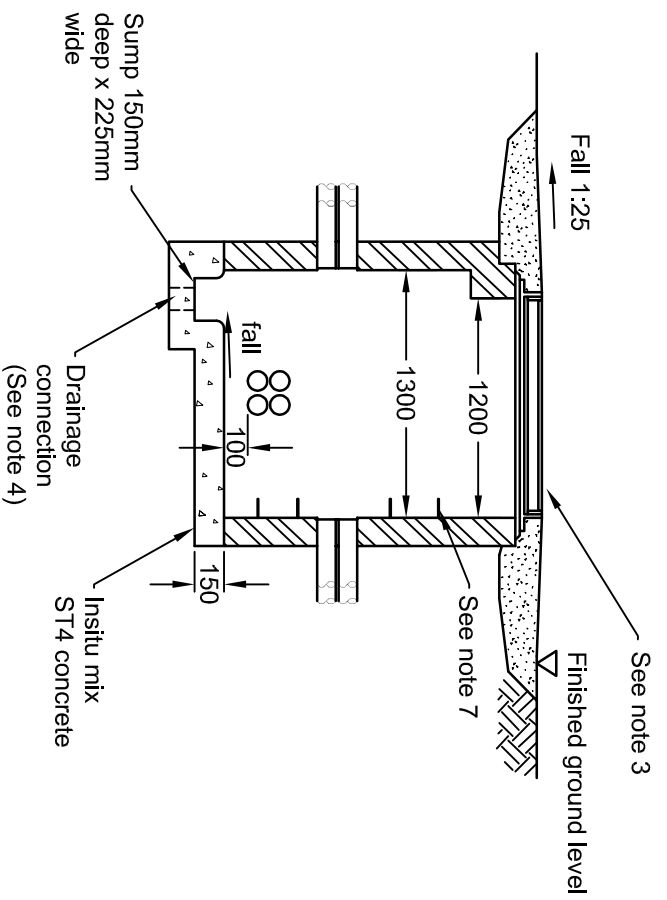
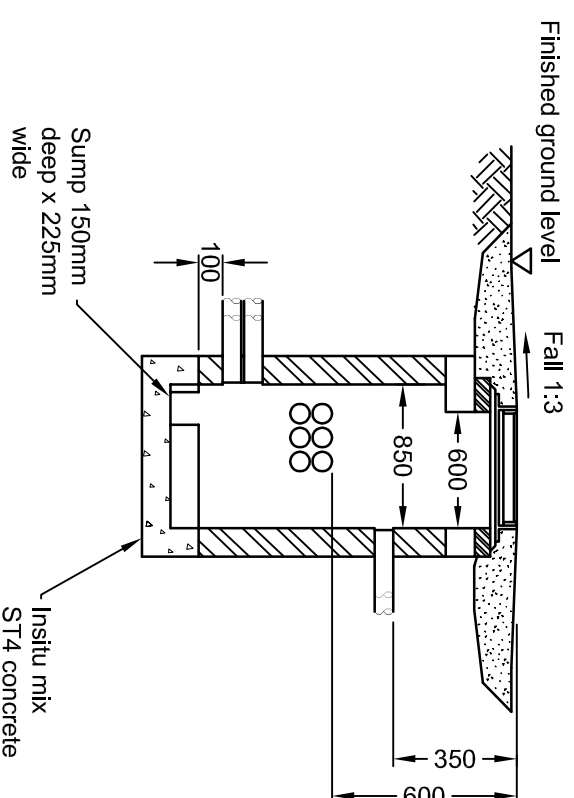


PLAN



SECTION A - A



SECTION B - B

NOTES

1. Chamber walls to be constructed as specified in SHW clause 1532.
2. To accommodate the form of construction used for the chamber the spacing of the local ducts may vary between 0 and 100mm.
3. Cover(s) and frame to be in accordance with BSEN124.
4. In situ base slab to be cast with a minimum fall of 1:20 towards the sump. Positive drainage in the form of a soakaway or connection to the Highway drainage network is required.
5. The chamber walls shall be chamfered around the duct entry points to provide a smooth surface for cable installation.
6. The overall depth of chamber is specified in the chamber schedule.
7. Steps shall comply with SHW clause 1532.
8. Joining chambers shall have a minimum depth of 1.3M measured from the top of the cover to the base of the chamber (Dimension A on Drawing NDX1063-01.02 & 03).
9. Maximum depth of the chamber shall be 2M. Where transverse ducts are constructed at a greater depth refer to Drawing.
10. For duct installation details see sheet 6.
11. Chambers markings in accordance with SHW clause 1532 shall be installed by the Contractor.
12. The Contractor shall supply and install a duct plug into every duct entering a chamber (see sheet 6) in accordance with SHW clause 1530.
13. A concrete apron with a shallow slope as shown on the plan view shall be constructed for maintenance access. It shall be formed from a 150mm (min) deep layer of ST4 concrete, with a U2 surface finish.
14. The external surfaces of the chamber shall be waterproofed using cut-back bitumen.

Note:
The NDX series of drawings represents non site specific installations of standard equipment and site layouts.



This drawing was generated on computer and must not be manually updated

TYPICAL TYPE A CHAMBER CONSTRUCTION DETAIL

ORIGINAL DRAWING SIZE: 297 x 420		DRN C.S.G.		CHKD B.D.	
ALL DIMENSIONS ARE IN MM		DATE 01.12.01		DATE 01.12.01	
TOLERANCE +- 1 UNLESS OTHERWISE STATED		DRG. NO. NDX1063-01ga		SHT. NO. 1 of 1	
THIRD ANGLE PROJECTION DO NOT SCALE		ISSUE		AMENDMENTS	
B	SEE REVISION SHEET			GC 28/09/06	
A	FOR INFORMATION			BD 09/02/03	
C	REDRAWN			BD 13/10/09	
		SCALE		N.T.S.	