

SCOTTISH MINISTERS' REQUIREMENTS

SCHEDULE 7 PART 6

MANAGEMENT AND MAINTENANCE OF STRUCTURES

CONTENTS	Page No.
1. INTRODUCTION	1
1.1 General	1
2. MAINTENANCE MANAGEMENT	1
2.1 Structures Management	1
2.2 The Structures Management Function of the Integrated Roads Information System	1
2.3 Structures Maintenance Schedule	2
2.4 Maintenance and Operations Manuals and Health and Safety Files	3
3. INSPECTION REQUIREMENTS	3
3.1 General	3
3.2 Structures Safety Inspections	4
3.3 General Inspections	5
3.4 Principal Inspections	5
3.5 Scour Inspections and Assessments	6
3.6 Special Inspections	7
3.7 Weather Resistant Steel Bridge Monitoring	7
4. REQUIREMENTS FOR MAINTENANCE OF STRUCTURES	8
4.1 General	8
4.2 Substructures and Superstructures	8
4.3 Expansion Joints	8
4.4 Drainage Systems	8
4.5 Parapets and Pedestrian Protection on Structures	8
4.6 Bearings and Bearing Shelves	8
4.7 Structures Over or Conveying Watercourses	8
4.8 Sign and or Signal Gantries, High Mast Lighting and other Masts	8
4.9 Non-structural Items	9
4.10 Underpasses and Culverts also used by Pedestrians and Cyclists	9
4.11 Retaining Walls	9
5. REQUIREMENTS FOR STRUCTURAL MAINTENANCE	9
5.1 General	9
5.2 Maintenance Files	10
5.3 Structural Maintenance Programme	10
5.4 Value Management of Structural Maintenance Programme	11
5.5 Structures Scheme Cost Estimating	11
6. STRUCTURAL ASSESSMENTS	12
6.1 General	12
6.2 Structural Assessment Process	12
6.3 Structural Assessments in Progress	13

7.	MANAGEMENT OF SUB-STANDARD STRUCTURES AND STRUCTURES WITH KNOWN DEFECTS	13
7.1	General	13
7.2	Interim Measures and Monitoring	13
7.3	Strengthening and Replacement	14
8.	ACCESS SYSTEMS	15
8.1	General	15
8.2	Construction Design and Management	16
8.3	Temporary Access Systems	16
8.4	General and Principal Inspections of Access Systems	16
9.	THE TECHNICAL APPROVAL AND DEPARTURE FROM STANDARD PROCESS FOR STRUCTURES	17
9.1	General	17
10.	MANAGEMENT AND MAINTENANCE OF STRUCTURES WHERE AGREEMENTS EXIST WITH THIRD PARTIES	18
11.	BRIDGES WITH SIGNED LOW HEADROOM AND THOSE SUBJECT TO BRIDGE STRIKES BY OVERHEIGHT VEHICLES	18
	ANNEX 7.6/A – Maintenance Schedule Proforma	19
	ANNEX 7.6/B – List of Structures Requiring Principal Inspections	26
	ANNEX 7.6/C – List of Structures Over or Carrying Watercourses which have been subject to a Stage 1 Scour Assessment	66
	ANNEX 7.6/D – List of Structures Over or Carrying Watercourses which have been subject to a Stage 2 Scour Assessment	70
	ANNEX 7.6/E – List of Structures subject to Assessment and Upgrading of Vehicle Parapets to Transport Scotland Interim Advice Note 25	74
	ANNEX 7.6/F – List of Structures Subject to Identification of 'Particularly at Risk' Supports to Transport Scotland Interim Advice Note 29	80
	ANNEX 7.6/G – Technical Approval Procedures for Assessment of Structures in Scotland	88
	ANNEX 7.6/H – List of Sub-Standard Structures with Structural Assessments in Progress	92
	ANNEX 7.6/I – List of Sub-Standard Structures	96
	ANNEX 7.6/J – List of Structures with Known Defects Requiring Monitoring which are Sub-Standard	100

ANNEX 7.6/K – List of Structures with Known Defects Requiring Monitoring that are not Sub-Standard	104
ANNEX 7.6/L – Strengthening and Replacement Programme for the Sub-Standard Structures	110
ANNEX 7.6/M – Structures with Bridge Access Gantries and or Runway Beams	114
ANNEX 7.6/N – List of Bridges with Agreement with Third Parties that Effect Existing and Future Management, Maintenance and Replacement	118
ANNEX 7.6/O – List of Bridges with Signed Low Headroom	122
ANNEX 7.6/P – List of Structures subject to Frequent Bridges Strikes with dates of Incidents Since 2001	126

SCOTTISH MINISTERS' REQUIREMENTS

SCHEDULE 7 PART 6

MANAGEMENT AND MAINTENANCE OF STRUCTURES

1. INTRODUCTION

1.1 General

- 1.1.1 Transport Scotland's management and maintenance of Structures requirements follow the asset management principles set out in *Management of Highway Structures: A Code of Practice* and Transport Scotland's *Asset Management Plan*.
- 1.1.2 Details of all Structures for which the Director is responsible for are contained in the structures management function of the Integrated Roads Information System.
- 1.1.3 This Schedule details the inspection and maintenance requirements to be undertaken by the Operating Company to:
 - (i) maintain Structures in good and safe repair,
 - (ii) ensure Structures are safe for use, fit for purpose and can carry current traffic loads, and
 - (iii) facilitate the planning and prioritisation of maintenance Operations and Special Inspections.
- 1.1.4 The requirements of this Schedule apply to Structures for which the Director is responsible and which are contained in the structures management function of the Integrated Roads Information System.
- 1.1.5 The Operating Company shall include documented procedures in its Management System to deliver the requirements of this Part.

2. MAINTENANCE MANAGEMENT

2.1 Structures Management

- 2.1.1 In accordance with the requirements of Schedule 5 Part 4, the Operating Company shall appoint:
 - (i) a Bridges Manager who shall be a member of the Operating Company's Core Management Team,
 - (ii) a Major Bridges Manager to deliver the requirements of Schedule 7 Part 7 who shall report directly to the Bridges Manager, and
 - (iii) a Gantry Manager to deliver the requirements of paragraph 8 of this Part who shall report directly to the Bridges Manager.

The Operating Company may combine the roles of the Major Bridges Manager and Gantry Manager. The Bridges Manager shall be a separate role.

2.2 The Structures Management Function of the Integrated Roads Information System

- 2.2.1 The structures management function of the Integrated Roads Information System database is used to record the information and programmes relating to the management, monitoring and maintenance of existing and proposed Structures. The

Operating Company shall use and update the structures management function of the Integrated Roads Information System database in accordance with the procedures specified in the system user manual and the *Transport Scotland Inspection Manual – Principal Inspections of Trunk Road Structures and Location System* as issued by the Director and as amended and re-issued by the Director from time to time. The structures management function of the Integrated Roads Information System shall be kept up to date by the Operating Company throughout the duration of this Contract.

2.2.2 The Operating Company shall update all data held in the structures management function of the Integrated Roads Information System, as follows:

- (i) within three Working Days of becoming aware of any new data or changes to existing data, particularly after any inspections of Structures have been undertaken, and
- (ii) when existing Structures including sign gantries have been:
 - (a) demolished or infilled,
 - (b) newly constructed,
 - (c) widened,
 - (d) maintained and subjected to remedial works, or
 - (e) strengthened and or improved.

2.3 Structures Maintenance Schedule

2.3.1 No later than 30 days prior to the Commencement of Service Date, the incoming Operating Company shall review the maintenance schedule of the outgoing operating company to assist in the Operating Company's development of its own maintenance schedule for this Contract. Maintenance schedule duties shall be undertaken at least twice per year in each Annual Period as follows:

- (i) at the end of the autumnal leaf fall (and no later than November), and
 - (ii) the beginning of summer (May or June),
- or additionally when required.

2.3.2 No later than 25 Working Days prior to the commencement of the first Annual Period and all subsequent Annual Periods, the Operating Company shall prepare a maintenance schedule and submit it to the Director for written consent. The maintenance schedule shall itemise the maintenance requirements for each Structure and associated Access Systems.

2.3.3 The Operating Company shall ensure that it has sufficiently trained staff available to undertake the duties in the agreed maintenance schedule.

2.3.4 A summarised example of the maintenance schedule is provided in Annex 7.6/A of this Part and includes provisions for recording:

- (i) the results of Structures Safety Inspections and tests,
- (ii) the actions taken including the dates these were taken and completed,
- (iii) the dates when maintenance is due to be carried out, and

- (iv) the updates to the maintenance requirements throughout the Contract Period.

2.3.5 Throughout the Contract Period, the Operating Company shall update the maintenance schedule within five Working Days of undertaking any work with:

- (i) the dates and details of the Structures Safety Inspections undertaken,
- (ii) the dates and details of any tests carried out,
- (iii) any other actions taken, and
- (iv) the dates when further maintenance is required.

The Operating Company shall also update the maintenance schedule when changes to maintenance are required to comply with the requirements of this Schedule.

2.3.6 Before commencing maintenance activities identified in the maintenance schedule each year, the Operating Company shall submit a programme to the Director and the Performance Audit Group which identifies the number of maintenance activities which are programmed to be carried out each month.

2.4 Maintenance and Operations Manuals and Health and Safety Files

2.4.1 The Operating Company shall review and update annually all maintenance and operations manuals and health and safety files for Structures. This review and update shall ensure all maintenance and operations manuals and health and safety files for Structures comply with current legislation and safe working practices and contain any changes to the maintenance requirements of the Structure.

The Operating Company shall prepare a report detailing the findings and changes made as part of the annual review. This report shall be submitted to the Director within three Working Days of the completion of the review.

2.4.2 The Operating Company shall notify the Director of missing maintenance and operations manuals and missing health and safety files for Structures which should be available. The Director shall issue an Order to the Operating Company stating his requirements for rectifying such occurrences.

2.4.3 No later than 15 Working Days after completion of any works to new or existing Structures by the Operating Company or by a Works Contractor, the Operating Company shall submit to the Director new and amended as-built records, including maintenance and operations manuals and health and safety files required by the *Design Manual for Roads and Bridges*.

3. INSPECTION REQUIREMENTS

3.1 General

3.1.1 The Operating Company shall undertake:

- (i) Structures Safety Inspections,
- (ii) General Inspections,
- (iii) Principal Inspections,
- (iv) Scour Inspections and Assessments, and
- (v) Special Inspections.

All inspections shall be undertaken in accordance with the standards and advice notes contained in the *Design Manual for Roads and Bridges* and the following Transport Scotland documents:

- (vi) *Transport Scotland Inspection Manual – Principal Inspections of Trunk Road Structures and Location System*,
- (vii) *Structures Management System user manual*, and
- (viii) *Inspections Further Data Collection Requirements*.

All Trunk Road Structures are subject to these inspection requirements, except where specifically excluded by the Director. All Principal Inspections of Structures with a span of greater than 10 metres shall be undertaken by a chartered civil or structural engineer.

- 3.1.2 Inspections on Structures that are accommodation bridges for private users shall include the road surface on the Structure and for a further five metres beyond either end of the Structure, together with any provided surface water drainage. Vehicular restraint systems, where provided, shall be inspected for a minimum of 30 metres from each terminal or anchorage at the parapet interface.

3.2 Structures Safety Inspections

- 3.2.1 Structures Safety Inspections shall be undertaken by the Operating Company at the same time as other inspection and maintenance duties.

Structures Safety Inspections shall be undertaken to identify any deficiencies which, if not rectified, represent or may result in:

- (i) a danger to the public and which therefore require immediate or urgent action,
- (ii) accidents,
- (iii) deterioration or behaviours indicating a reduction in load carrying capacity, and
- (iv) high repair costs.

- 3.2.2 The Operating Company shall undertake two types of Structures Safety Inspections:

- (i) random, and
- (ii) reactive.

The Operating Company shall undertake random Structures Safety Inspections during maintenance of Structures. When undertaking the random Structures Safety Inspection the Operating Company shall:

- (iii) observe the Structure,
- (iv) record any signs of problems or deficiencies, and
- (v) report them to the Bridges Manager.

The Operating Company shall undertake reactive Structures Safety Inspections after a problem or deficiency has been observed or reported by:

- (vi) any of the Operating Company's staff, or
- (vii) the Police or the public,

and report them to the Bridges Manager.

The Operating Company shall submit a monthly report to the Director's bridges manager detailing the findings of all random and reactive Structures Safety Inspections.

Before commencing General Inspections each year, the Operating Company shall submit a programme to the Director and the Performance Audit Group which identifies the number of inspections which are programmed to be carried out each month.

- 3.2.3 The Operating Company shall identify, classify and record Defects observed as either Category 1 or Category 2 Defects in accordance with the requirements of Schedule 7 Part 1. The Operating Company shall take action appropriate to the category and severity of such Category 1 or Category 2 Defects.

3.3 General Inspections

- 3.3.1 The Operating Company shall undertake General Inspections at intervals not exceeding two years. This shall exclude any Structures on which a Principal Inspection has been carried out during the same Annual Period in which the General Inspection is due to be conducted.

- 3.3.2 The programme of General Inspections for each Structure shall be coordinated with the programme of Principal Inspections for each Structure using the following continuous six year inspection cycle:

- (i) Principal Inspection,
- (ii) General Inspection two years later,
- (iii) General Inspection four years later,
- (iv) Principal Inspection six years later.

The Operating Company shall use the existing cycle of inspections undertaken by the previous operating company as the basis for developing and implementing an inspection programme that shall meet these inspection requirements.

Before commencing General Inspections each year the Operating Company shall submit a programme which identifies the number of inspections which are programmed to be carried out each month to the Director and the Performance Audit Group.

- 3.3.3 When undertaking General Inspections, the Operating Company shall record the condition of every part of a Structure visible from the ground and deck level and, where necessary, access confined spaces including box girders and culverts.

General Inspections shall be recorded on a proforma provided within the structures management function of the Integrated Roads Information System. For any Defects found, the Defect description and priority ranking used shall be in accordance with the requirements in *The Inspection Manual for Highways Structures Volume 1* and the *Transport Scotland Inspection Manual – Principal Inspections of Trunk Road Structures and Location System*.

3.4 Principal Inspections

- 3.4.1 Structures for which Principal Inspections are required are listed within the structures management function of the Integrated Roads Information System and in

Annex 7.6/B of this Part. Details of the year in which the next Principal Inspection is due for each Structure are provided in Annex 7.6/B of this Part.

The Operating Company shall undertake Principal Inspections during the specified year for Structures listed in Annex 7.6/B of this Part at intervals not greater than six years after the preceding Principal Inspection. Principal Inspections shall include access to confined spaces within relevant Structures including box girders and culverts. Unless requested otherwise by the Director, the result of a Principal Inspection shall be recorded within the structures management function of the Integrated Roads Information System.

Before commencing Principal Inspections each year the Operating Company shall submit a programme which identifies the number of inspections which are programmed to be carried out each month to the Director and the Performance Audit Group.

3.5 Scour Inspections and Assessments

3.5.1 Scour Inspections and scour assessments shall be executed as part of the General Inspection and Principal Inspection, unless instructed otherwise by the Director.

3.5.2 The Operating Company shall carry out underwater Scour Inspections at the same time as undertaking Principal Inspections for those Structures identified in Annexes 7.6/C and 7.6/D of this Part as requiring Scour Inspections. Prior to carrying out a Scour Inspection, the Operating Company shall review any previous Stage 1 and Stage 2 Scour Assessments undertaken in accordance with BA74 of the *Design Manual for Roads and Bridges* so that any changes in conditions can be identified during the Scour Inspection. The Operating Company shall assess the potential for scour and record any observations as part of Principal Inspections together with any observations related to the scour noted and recorded during General Inspections. Scour Inspection reports shall be included as a part of the Principal Inspection report.

3.5.3 Scour Inspections and assessments shall be undertaken in accordance with the *Design Manual for Roads and Bridges* and require a two stage approach to identify those Structures where the potential risk of scour is considered high. All Structures over watercourses are listed in Annex 7.6/C of this Part and have been subject to Stage 1 assessment in accordance with BA74 of the *Design Manual for Roads and Bridges*.

In accordance with *Design Manual for Roads and Bridges*, the Operating Company shall ensure that the individual undertaking the inspection shall have the required knowledge and experience.

3.5.4 When a Stage 1 Scour Assessment is required, the Operating Company shall undertake a Scour Inspection and collect the data regarding the Structure, its foundations, the river and any information on the history of the Structure and any problems experienced. Where a risk of scour is identified, a Stage 2 Scour Assessment shall be required.

3.5.5 A Stage 2 Scour Assessment shall involve a calculation of the potential scour depths and an assessment of priority rating. Existing Structures that have had a Stage 2 Scour Assessment are listed in Annex 7.6/D of this Part

3.5.6 The Operating Company shall undertake Scour Inspections of Structures at General Inspection and Principal Inspection, and shall include foundations of Structures, part

of the Structures and scour prevention training works that are at risk of scour. This shall be done to assess whether there are changes to the river channel or watercourse that could affect the conclusions on safety recorded in the existing Stage 1 and Stage 2 Scour Assessments. These shall be recorded as part of the General Inspection and Principal Inspection process.

The need for additional Scour Inspections to Structures after periods of heavy rainfall shall be assessed by the Operating Company as a reactive Structures Safety Inspection and, where required, a Special Inspection shall be undertaken.

- 3.5.7 When required by BA74 of the *Design Manual for Roads and Bridges*, the Director shall issue an Order for the Operating Company to undertake Stage 1 and Stage 2 Scour Assessments of a Structure.

3.6 Special Inspections

- 3.6.1 Subject to an Order, the Operating Company shall undertake Special Inspections to investigate particular concerns rather than at programmed intervals.
- 3.6.2 Special Inspections shall generally be undertaken by the Operating Company to investigate a Defect identified during a General Inspection or Principal Inspection.

3.7 Weather Resistant Steel Bridge Monitoring

- 3.7.1 The Operating Company shall undertake the management and monitoring of Structures incorporating weather resistant steel in accordance with:
- (i) the *Design Manual for Roads and Bridges*, and
 - (ii) the requirements for carrying out and reporting General and Principal Inspections referred to in paragraphs 3.3 and 3.4 of this Part.
- 3.7.2 Structures incorporating weather resistant steel which require monitoring are listed within the structures management function of the Integrated Roads Information System. The system contains data on the year in which the next Principal Inspection is due and the last year in which the steel thickness measurements were taken.
- 3.7.3 The Operating Company shall ensure that steel thickness measurement data is recorded, stored and presented in Principal Inspection reports in order that corrosion trends are apparent. Only certified calibrated gauges may be used. The structures management function of the Integrated Roads Information System contains data on the measurements, locations and previously measured steel thicknesses. The Operating Company shall use such data to monitor the corrosion trends and report on them in the relevant Principal Inspection reports.
- 3.7.4 The Operating Company shall measure, record, store and present the results of the actual steel thicknesses at the critical locations as in the Principal Inspection reports.
- 3.7.5 The Operating Company shall incorporate in its General Inspection procedures a visual inspection procedure of the critical areas where measurements are taken and areas prone to corrosion, particularly in the vicinity of all deck joints, at intervals not exceeding two years.

4. REQUIREMENTS FOR MAINTENANCE OF STRUCTURES

4.1 General

- 4.1.1 Maintenance of Structures and any associated Access System comprises activities relating to servicing of the Structure. Maintenance shall be undertaken regularly or at pre-determined intervals in accordance with any operations manual, log book or maintenance schedule.

Maintenance of Structures does not cover the repair or renewal of structural elements or components that have become unserviceable due to general wear and tear or which have deteriorated for other reasons. Such work must be identified by the Operating Company during inspections and assessments and included in the planned structural maintenance detailed in paragraph 5 of this Part.

- 4.1.2 The Operating Company shall carry out maintenance of Structures as required, and at least twice per year, to meet the requirements of this Part.
- 4.1.3 All graffiti shall be dealt with in accordance with the requirements of Schedule 7 Part 1.

4.2 Substructures and Superstructures

- 4.2.1 The Operating Company shall undertake maintenance of substructures and superstructures in accordance with the Specification.

4.3 Expansion Joints

- 4.3.1 The Operating Company shall undertake maintenance of expansion joints in accordance with the Specification and in addition shall report any Category 1 Defects immediately to the Director for further investigation and repair.

4.4 Drainage Systems

- 4.4.1 The Operating Company shall undertake maintenance of drainage systems including carriageway drainage on or adjacent to Structures in accordance with the Specification and shall include clearing drainage outlet manholes.

4.5 Parapets and Pedestrian Protection on Structures

- 4.5.1 The Operating Company shall undertake maintenance of parapets and pedestrian protection on Structures in accordance with the Specification and in addition shall report any Category 1 Defects immediately to the Director for further investigation and repair.

4.6 Bearings and Bearing Shelves

- 4.6.1 The Operating Company shall undertake maintenance of bearings and bearing shelves in accordance with the Specification and in addition shall report any Category 1 Defects immediately to the Director for further investigation and repair.

4.7 Structures Over or Conveying Watercourses

- 4.7.1 The Operating Company shall undertake maintenance of Structures over or conveying watercourses in accordance with the Specification. It shall include all the requirements detailed in paragraphs 4.1 to 4.6 and 4.9 of this Part.

4.8 Sign and or Signal Gantries, High Mast Lighting and other Masts

- 4.8.1 The Operating Company shall undertake maintenance of the non electrical components of sign gantries, signal gantries, high mast lighting and other masts

where not already covered by Schedule 7 Part 1, in accordance with the Specification and in addition shall report any Defects immediately to the Director for further investigation and repair.

4.9 Non-structural Items

4.9.1 Non-structural items exclude Access Systems associated with Structures. Non-structural items include but are not limited to:

- (i) access stairs,
- (ii) access platforms,
- (iii) hinges,
- (iv) doors,
- (v) ladders,
- (vi) pumps,
- (vii) access chambers,
- (viii) sumps,
- (ix) grills,
- (x) trash screens,
- (xi) access covers,
- (xii) watergates,
- (xiii) ventilation ducts and grills, and
- (xiv) ancillary lighting connected with the above.

4.9.2 The Operating Company shall undertake maintenance of non-structural items associated with Structures in accordance with the Specification.

4.9.3 The Operating Company shall ensure that all non-structural items associated with Structures operate effectively.

4.10 Underpasses and Culverts also used by Pedestrians and Cyclists

4.10.1 The Operating Company shall undertake maintenance of underpasses and culverts used by pedestrians, cyclists and other road users in accordance with the Specification.

4.11 Retaining Walls

4.11.1 The Operating Company shall undertake maintenance of retaining walls in accordance with the Specification.

5. REQUIREMENTS FOR STRUCTURAL MAINTENANCE

5.1 General

5.1.1 Structural maintenance shall include the repair, renewal and replacement of structural elements or components that have become unserviceable through wear and tear or deteriorated with time and usage or which have been damaged.

5.1.2 Structural maintenance shall include the upgrading of Structures to bring specific elements and components of Structures up to current requirements, including safety and durability standards.

5.1.3 The Operating Company shall determine the structural maintenance requirements from the results of:

- (i) Structures Safety Inspections,
- (ii) General Inspections,
- (iii) Principal Inspections,
- (iv) Special Inspections,
- (v) Scour Inspections,
- (vi) Scour Assessments,
- (vii) Bridge Assessments,
- (viii) previous maintenance programmes,
- (ix) the Transport Scotland structures workbank, as advised by the Director, and
- (x) any other special programmes or assessments advised or ordered by the Director including, but not limited to, parapet and vehicle restraint system assessments and at-risk pier assessments.

5.1.4 Recommendations for structural maintenance Operations shall be submitted to the Director by the Operating Company as part of the annual Bids and programme process in accordance with the requirements of Schedule 4 Part 1.

5.2 Maintenance Files

5.2.1 The Bridges Manager shall keep Structures maintenance files at the Central Office for each Structure. These shall be in paper and Electronic Copy and referenced by Route name, the junctions between which they are located and national Ordnance Survey grid coordinates.

Maintenance files for Structures shall contain:

- (i) copies of all inspections together with details of structural maintenance and repair, and
- (ii) drawings and records showing:
 - (a) location and extent of maintenance Operations and Works,
 - (b) materials employed,
 - (c) date of implementation,
 - (d) details of Works Contractors and subcontractors employed, and
 - (e) costs of Operations and Works.

5.3 Structural Maintenance Programme

5.3.1 The Bridges Manager shall review:

- (i) inspection, assessment, special investigation and feasibility reports for Structures and Access Systems,

- (ii) reports and information relating to the monitoring and management of sub-standard Structures,
- (iii) monitoring requirements for Structures with known Defects,
- (iv) test results and known strengthening and replacement requirements,
- (v) the Transport Scotland Structures Workbank,
- (vi) special programmes,
- (vii) previous maintenance programmes, and
- (viii) any other special programmes or assessments advised or ordered by the Director,

and identify and prioritise:

- (ix) maintenance, strengthening and replacement Operations required for Structures and any associated Access Systems,
- (x) Special Inspections, Scour Inspection and assessments,
- (xi) at-risk pier assessments,
- (xii) parapet and vehicle restraint system assessments,
- (xiii) Structures Assessments and interim and formal measures for sub-standard Structures,
- (xiv) monitoring requirements for Structures with known Defects, and
- (xv) any other special programmes or assessments advised or ordered by the Director,

for inclusion in the annual Bids and programmes process.

5.4 Value Management of Structural Maintenance Programme

- 5.4.1 In addition to preparing the structural maintenance programme set out in paragraphs 5.1 to 5.3 of this Part, the Operating Company shall prioritise and rank all the Schemes in such programme as well as Schemes with priority three and four work arising from Principal and General Inspections undertaken in an inspection year. This shall be done using the techniques described in *Maintenance and Making Better Use – Value Management of the Structures Renewal Programme – Amended for Transport Scotland*.

The output from the value management prioritisation shall be submitted to the Director for his written consent and form the basis of the following year's programme. The Director shall consider the output of the prioritisation along with any other Schemes to be included in the programme, which shall be prioritised and ranked. All programmes shall be submitted in accordance with the dates set out in the annual process described in Schedule 4 Part 1.

- 5.4.2 The Director may, from time to time and at his own discretion, review, change and re-prioritise the Schemes to be included in the agreed programme.

5.5 Structures Scheme Cost Estimating

- 5.5.1 All Structures Scheme cost estimates shall be reviewed by the Operating Company and if required, revised prior to undergoing value management as set out in paragraph 5.4 of this Part.

- 5.5.2 All Structures Scheme cost estimates shall be developed in line with the requirements of this Contract. Where the scope of works changes, Scheme cost estimates shall be revised to ensure they reflect the change in scope and are accurate. The Operating Company shall, when requested, provide the Director with the current scope of works and accurate cost estimate to be used for value management as set out in paragraph 5.4 of this Part.

6. STRUCTURAL ASSESSMENTS

6.1 General

- 6.1.1 Structural assessments and the resulting required actions are essential in ensuring that all Structures remain in a safe and serviceable state. The Operating Company shall inform the Director immediately of any issue or deterioration identified as a result of a structural assessment that has a detrimental effect on the load carrying capacity of a Structure.
- 6.1.2 Subject to an Order, the Operating Company shall undertake:
- (i) structural assessments required due to increases in vehicle loadings above those used in the design of a Structure,
 - (ii) assess a Structure or part of a Structure that is noted in an inspection to have deteriorated and whose design or assessed load carrying capacity may have been reduced,
 - (iii) assess a Structure or part of a Structure as a result of accidental damage,
 - (iv) assessment of Structures without HB ratings,
 - (v) assessment and upgrading of vehicle parapets in accordance with *Transport Scotland Interim Advice Note 25*,
 - (vi) a two stage structural review and assessment of all Trunk Road Structures during this Contract for the purpose of establishing or confirming the validity of the latest assessment, or their original design if there has been no subsequent assessment, and
 - (vii) identification and assessment of 'particularly at risk' supports in accordance with *Transport Scotland Interim Advice Note 29*.
- 6.1.3 Structural reviews and assessments shall be undertaken on a six year cycle to coincide with a Principal Inspection, or as ordered by the Director.
- 6.1.4 Annexes 7.6/E & 7.6/F of this Part provide details on vehicle parapets and bridge supports with assessments in progress or which require upgrading or which are under review and may require further detailed assessment.

6.2 Structural Assessment Process

- 6.2.1 The Operating Company shall follow the procedure referred to in Annex 7.6/G of this Part to obtain Technical Approval for structural assessments.
- 6.2.2 Subject to an Order, the Operating Company shall undertake structural assessments to level one to three as agreed with the Director in accordance with the assessment requirements in the *Design Manual for Roads and Bridges*.
- 6.2.3 The Director may, at his discretion and subject to an Order, require the Operating Company to undertake level four and five assessments that require specialist

knowledge and expertise using appropriately experienced assessing engineers. Where appropriate staff are not available from within the Operating Company, the Operating Company shall propose specialist contractors and the rates payable for the prior written consent of the Director.

6.3 Structural Assessments in Progress

- 6.3.1 Subject to an Order, where a structural assessment is in progress at the Commencement of Service Date, the Operating Company shall undertake the completion of the assessment to the level of assessment agreed with the Director.
- 6.3.2 The Operating Company shall inform the Director of any identified assessment that cannot be completed before the end of the Final Annual Period prior to undertaking any work on the assessment. The Director shall decide:
- (i) if the Operating Company is required to undertake the identified assessment, or
 - (ii) if he wishes to make alternative arrangements outwith the Operating Company's arrangements for undertaking the identified assessment.
- 6.3.3 Subject to the requirements in paragraph 6.3.2, the Operating Company shall complete all structural assessments in progress no later than the end of the Final Annual Period. The Operating Company shall not initiate any new assessments that may continue beyond the end of the Final Annual Period.
- 6.3.4 Annex 7.6/H of this Part lists sub-standard Structures with assessments in progress at the start of the first Annual Period or which are under review and may require structural assessment.

7. MANAGEMENT OF SUB-STANDARD STRUCTURES AND STRUCTURES WITH KNOWN DEFECTS

7.1 General

- 7.1.1 The Operating Company shall undertake the management of sub-standard Structures and the management of Structures with known Defects in order to:
- (i) maintain public safety, and
 - (ii) enable sub-standard Structures to remain in service whilst further assessments are carried out and until any replacement or strengthening is completed or the Structure is no longer deemed sub-standard.

These obligations may change during the Contract Period and any additional obligations shall be the subject of an Order.

The Operating Company shall manage sub-standard Structures in accordance with the requirements of the *Design Manual for Roads and Bridges*.

7.2 Interim Measures and Monitoring

- 7.2.1 All Structures that are sub-standard or require monitoring are listed within the structures management function of the Integrated Roads Information System. A summary of sub-standard Structures is also provided in Annex 7.6/I of this Part. Annex 7.6/J of this Part lists Structures with known Defects requiring monitoring which are sub-standard and Annex 7.6/K of this Part lists Structures with known Defects requiring monitoring that are not sub-standard.

- 7.2.2 The interim measures proformas provided in Schedule 6 Part 4 based on those in the *Design Manual for Roads and Bridges* shall be used by the Operating Company in relation to sub-standard Structures or Structures with known defects. Details of the current assessments and monitoring, interim and permanent measures that have been or shall be applied to sub-standard Structures are recorded in the structures management function of the Integrated Roads Information System for each sub-standard Structure.
- 7.2.3 The Operating Company shall be responsible for ensuring that all sub-standard Structures and Structures with known Defects have appropriate assessment ratings, monitoring regimes and agreed interim and planned permanent measures in place.
- 7.2.4 The Operating Company shall review annually each sub-standard Structure and its associated interim measures proforma and each Structure with known Defects. The Operating Company shall undertake appropriate monitoring and maintain interim measures in place until appropriate works are implemented or the Structure is assessed as adequate or has been strengthened or replaced. If, at any time, any Structure is categorised as an immediate risk Structure in accordance with the *Design Manual for Roads and Bridges*, the Operating Company shall inform the Director and shall implement the necessary safety and interim measures immediately.
- 7.2.5 The Operating Company shall submit all proposals and changes, including:
- (i) any new monitoring and interim measures,
 - (ii) amendments to the existing monitoring measures,
 - (iii) where the existing structural assessment rating may no longer be valid and the Structure requires re-assessment in accordance with paragraph 6 of this Part,
 - (iv) strengthening and replacement work, and
 - (v) the cessation of monitoring,
- for the written consent of the Director.

7.3 Strengthening and Replacement

- 7.3.1 The Director shall determine the programme and funding for strengthening and replacement of sub-standard Structures and Structures that are beyond their service life or Structures that require replacement for other reasons.
- 7.3.2 The proposed strengthening and replacement programme is provided in Annex 7.6/L of this Part. The programme is subject to the funding of competing priorities and is controlled by the Director.

Schemes arising from the strengthening and replacement programme are subject to the requirements of paragraphs 5.4 and 5.5 of this Part, which shall be undertaken by the Operating Company.

The Operating Company shall provide such advice as may be requested by the Director to enable him to prioritise this work.

8. ACCESS SYSTEMS

8.1 General

- 8.1.1 The Operating Company's Gantry Manager shall supervise the use of all Access Systems and carry out the duties referred to in this section.
- 8.1.2 Structures listed in Table 7.6.M.1 of Annex 7.6/M of this Part has Access Systems which may be used by the Operating Company to gain access for inspection and maintenance Operations.
- 8.1.3 Structures listed in Table 7.6.M.2 of Annex 7.6/M of this Part has permanent bridge access gantries and or runway beams which are required to remain certified for use throughout the Contract Period.
- 8.1.4 The Operating Company shall be responsible for the inspections, testing, maintenance and operation of any Access Systems, including those listed in Annex 7.6/M of this Part. The Operating Company shall ensure that prior to use, all Access Systems comply in all respects with current regulations and standards including:
- (i) British Standard 6037: Code of practice for the planning, design, installation and use of permanently installed access equipment, or equivalent,
 - (ii) British Standard 5974: Temporary installed suspended scaffolds and access equipment or equivalent,
 - (iii) British Standard EN 1808: Safety requirements on suspended access equipment – design calculations, stability criteria, construction, or equivalent, and
 - (iv) *The Operation and Maintenance of Bridge Access Gantries and Runways. (Second Edition 2007)* published by the Institution of Structural Engineers.
- 8.1.5 The Operating Company shall be responsible for and provide:
- (i) method statements for inspections and testing,
 - (ii) certification, and
 - (iii) bridge maintenance files and health and safety files,
- in relation to all Access systems.
- 8.1.6 Where available, the Director shall provide the Operating Company with operations and maintenance manuals and manufacturers' instructions in relation to Access Systems.
- 8.1.7 The Operating Company shall use of the Access Systems to allow Undertakers to inspect and maintain their plant and equipment where this is fixed to a Structure.
- The Operating Company shall liaise with, supervise and accompany all:
- (i) Statutory Authorities,
 - (ii) Undertakers,
 - (iii) authorised contractors, and
 - (iv) other interested third parties,
- who are using the Access Systems.

8.1.8 The Operating Company shall ensure that routine inspection and testing and periodic electrical inspections and testing of the Access Systems are carried out in accordance with the operations and maintenance manuals. Certificates shall be held on the health and safety file for the work. The Operating Company shall also ensure that the gantry operations and maintenance manual is kept up to date with the following:

- (i) Design and check Certificates for access gantries and runway beams, which shall be signed by a chartered engineer,
- (ii) an electrical installation completion Certificate in relation to any electrical works that are undertaken on the gantry in accordance with British Standard 7671: 1992,
- (iii) periodic electrical inspections and testing carried out on existing installations, and
- (iv) test Certificates for all lifting devices and the system as a whole.

8.2 Construction Design and Management

8.2.1 The CDM Coordinator appointed by the Operating Company shall ensure that a Health and Safety Plan covering all Works or Operations relating to or requiring the use of all Access Systems is prepared.

The Principal Contractor appointed by the Operating Company for any Works or Operations utilising the Access System shall develop the Health and Safety Plan and prepare a full and detailed method statement to cover the specific Site Operations involved.

8.3 Temporary Access Systems

8.3.1 Where a temporary access platform is installed, or equipment supported or attached to the permanent Structure, the Operating Company shall satisfy itself regarding:

- (i) the competence of the Designer and contractor for the design, installation and operation of the temporary Access System and equipment, and
- (ii) ensure that the existing Structure has been assessed and certified as adequate to support all loading conditions resulting from the installation and operation of the temporary Access Systems.

8.3.2 Before any temporary Access System is used, the Operating Company shall ensure that the:

- (i) Design, installation and required certification for the temporary Access System, and
- (ii) the associated operations manual, incorporating all health and safety procedures,

is up to date and in accordance with current regulations and standards.

8.4 General and Principal Inspections of Access Systems

8.4.1 General and Principal inspections shall be carried out on all Access Systems, whether they are gantries or suspended scaffold installations. The inspections shall be reported separately but in the same format to those undertaken on the Structure at two year and six year intervals.

- 8.4.2 The Operating Company shall maintain an inspection regime and register for suspended scaffolding installations. This shall be placed on the health and safety file for the work and in the Structures maintenance manual.
- 8.4.3 For new temporary or permanent access installations, or for existing systems that are brought back into use, the Operating Company shall provide the appropriate Design and check Certificates which shall be placed on the health and safety file for the work. These shall be signed by a chartered civil or structural engineer where they relate to any suspended Access System installation.
- 8.4.4 The Operating Company shall ensure that its management procedures are in place and kept up to date for the operation and maintenance of any Access Systems which are required to be kept in service. Such Access Systems are listed in Annex 7.6/M of this Part. Details of procedures and required staffing levels shall be included in the gantry operations and maintenance manual and this information shall be updated regularly throughout the duration of this Contract.
- 8.4.5 The Operating Company shall ensure that the Gantry Manager and gantry operators receive any training necessary for the management and operation of the existing Access Systems and for any new system that is commissioned. Records of training together with the assessment of the suitability of the selected personnel shall be retained by the Operating Company. The Gantry Manager shall be responsible for the control of gantry operations and for ensuring that operations and maintenance manuals are reviewed at regular intervals and kept up to date.
- 8.4.6 The Operating Company shall ensure that in the event of emergencies or Access System breakdown, a safe means of exiting the Access System is available. Each operational Access System shall include the appropriate safety and first aid equipment.

9. THE TECHNICAL APPROVAL AND DEPARTURE FROM STANDARD PROCESS FOR STRUCTURES

9.1 General

- 9.1.1 The Operating Company shall submit approval in principle forms and applications for departures from standards forms for Structures to the Director for acceptance using the forms provided in Schedule 6 Part 4.
- 9.1.2 Applications for departures from standards shall allow adequate time for consideration by Transport Scotland. Such departures shall be requested prior to their inclusion in the approval in principle form or an addendum to the approval in principle form. Departures from standards which have been consented to by the Director shall be included within the approval in principle submission in accordance with the requirements of Schedule 6 Part 4.
- 9.1.3 No later than 25 Working Days after receipt of the Operating Company's approval in principle submission and departure form standards submission, the Director shall:
- (i) accept the submission in writing, or
 - (ii) reject the submission in writing with reasons, or
 - (iii) request the Operating Company to supply further information within five Working Days.

If the Director requests the Operating Company to supply further information, the minimum period of approval will be extended by five Working Days commencing on receipt of the additional information.

If the Operating Company cannot provide the additional information within five Working Days, it shall contact the Director to agree an alternative timeframe.

If the Approval in Principle submission is rejected by the Director, the period of approval of 25 Working Days shall recommence on receipt of the redrafted submission.

Where the Director is unable for any reason to meet this timescale, he shall notify the Operating Company in writing. The Operating Company shall not be entitled to any additional reimbursement if the Director is unable to meet the timescales referred to.

10. MANAGEMENT AND MAINTENANCE OF STRUCTURES WHERE AGREEMENTS EXIST WITH THIRD PARTIES

- 10.1.1 Agreements exist between the Scottish Ministers, Network Rail and British Waterways. The Operating Company shall familiarise itself with these agreements which may impact upon the management, maintenance and replacement of Structures. Annex 7.6/N of this Part lists Structures within the Unit where agreements exist with third parties and provides a brief description.

11. BRIDGES WITH SIGNED LOW HEADROOM AND THOSE SUBJECT TO BRIDGE STRIKES BY OVERHEIGHT VEHICLES

- 11.1.1 Bridges with clearances below 5.03 metres have signs identifying the maximum safe vehicle height which may pass beneath.

High vehicles are classified as those which:

- (i) cannot pass safely under a bridge with the standard minimum headroom clearance of 5.03 metres, or
- (ii) have a vehicle and load combination greater than 4.95 metres in height, allowing for the minimum safety margin of 0.275 metres.

- 11.1.2 The Operating Company shall implement the requirements of the following documents, as part of its procedures and Incident Response Plans, to deal with bridges strike incidents within the Unit:

- (i) *Response to a Bridge Strike over the Railway – A Protocol for Highway and Road Managers and Bridge Owners, and*
- (ii) *Prevention of Strikes on Bridges over Highways – A Protocol for Highway and Road Managers and Bridge Owners.*

- 11.1.3 Structures with signed low headroom are listed within the structures management function of the Integrated Roads Information System and in Annex 7.6/O of this Part.

- 11.1.4 Structures within the Unit which are subject to frequent bridge strikes, together with the dates of when previous strikes have occurred, are listed within the structures management function of the Integrated Roads Information System and in Annex 7.6/P of this Part.

This is Annex 7.6/A to Schedule 7 Part 6 referred to in the foregoing Agreement between Scottish Ministers and Scotland TranServ being a Joint Venture comprising of Balfour Beatty Civil Engineering Limited and Mouchel Limited.

SCOTTISH MINISTERS' REQUIREMENTS

SCHEDULE 7 PART 6

MANAGEMENT AND MAINTENANCE OF STRUCTURES

ANNEX 7.6/A –Maintenance Schedule Proforma

SCOTTISH MINISTERS' REQUIREMENTS

SCHEDULE 7 PART 6

MANAGEMENT AND MAINTENANCE OF STRUCTURES

ANNEX 7.6/A –Maintenance Schedule Proforma

	Name	Organisation	Signature	Date
Prepared By				
Checked By				
Authorised By				

REVISION STATUS				
REV.	DATE	Revision Details	Checked	Authorised

CONTROLLED DOCUMENT HOLDER	
Ref	Name of Holder
1	
2	
3	
4	
5	
6	
7	
8	
9	
10	

Maintenance Activity Code	Clause No.	Maintenance Activities
RCM 1	6110AR 6112AR 6117AR	Substructure and Superstructure - Vegetation/debris/bird dropping removal and disposal, checking/tightening/replacing of bolts to parapets (to include making good local damage to protective systems).
RCM 2	6110AR 6111AR	Expansion Joints - Cleaning out debris/vegetation/sediment from joints and drainage associated with joint, checking/tightening of bolts securing the joint, checking neoprene or elastomeric material for splitting or detachment, checking cover plates and nosing
RCM 3	6110AR 6112AR	Drainage Systems - Removal of obstructions/vegetation which could reduce capacity of the system, cleaning drainage holes, channels, pipes, drainage outlet manholes, weep pipes. Checking operation of flap valves and greasing if required.
RCM 4	6110AR 6113AR	Parapets and Pedestrian Protection - Checking/tightening/replacing of bolts. Cleaning hollow section drain holes. Removal of debris/vegetation/bird droppings. Checking freedom of parapet expansion joint.
RCM 5	6110AR 6114AR	Bearings and Bearing Shelves - Removal of debris/vegetation/bird droppings. Checking freedom of movement of bearings. Cleaning where appropriate greasing of accessible mating surfaces.
RCM 6	6110AR 6111AR 6112AR 6113AR 6114AR 6115AR 6117AR	Structures Over or Conveying Watercourses - As above and including - Removal of debris encrustations/greasing/lubrication of all fittings (in accordance with maintenance manual). Removal and disposal of debris and silt to ensure free flow of water.
RCM 7	6110AR 6116AR 6117AR	Sign Gantries and High Mast Lighting - Holding down assemblies and fixings including cladding to be checked/tightened/cleaned/greased (to include making good local damage to protective systems and replacement of bolts where required). Checking box type structures are water-tight and report leaks & bird entry issues.
RCM 8	6110AR 6117AR	Non-structural Items - Movable parts to be cleaned and greased. Holding down assemblies and fixings including cladding to be checked/tightened (to include making good local damage to protective systems).
RCM 9	6110AR 6112AR 6113AR 6114AR 6115AR 6117AR 6118AR	Underpasses and Culverts used by Pedestrians - Cleaning of ramps, light fittings, ceilings and soffits, mirrors and handrails. Removal of vegetation/sediment on or adjacent to structure which could have a detrimental effect on the function of the structure. Vegetation/debris/bird dropping removal and disposal. Drainage system/gulleys/grates/channels cleared to maintain efficient operation.
RCM 10	6110AR 6112AR 6113AR	Retaining Walls - Removal of vegetation on or adjacent to structure which could have a detrimental effect on the function of the structure.

[illegible]

Route	Total Structures	Structures Remaining	% Structures Complete	Total Maintenance Items	Maintenance Items Complete	Maintenance Items Remaining	% Items Complete	Comments on Items not Completed
A1	6	2	66.67%	20	14	6	70%	
TOTAL	6	2	66.7%	20	14	6	70.0%	

This is Annex 7.6/B to Schedule 7 Part 6 referred to in the foregoing Agreement between Scottish Ministers and Scotland TranServ being a Joint Venture comprising of Balfour Beatty Civil Engineering Limited and Mouchel Limited.

SCOTTISH MINISTERS' REQUIREMENTS

SCHEDULE 7 PART 6

MANAGEMENT AND MAINTENANCE OF STRUCTURES

ANNEX 7.6/B – List of Structures Requiring Principal Inspections

SCOTTISH MINISTERS' REQUIREMENTS

SCHEDULE 7 PART 6

MANAGEMENT AND MAINTENANCE OF STRUCTURES

ANNEX 7.6/B – List of Structures Requiring Principal Inspections

NEXT PRINCIPAL INSPECTION YEAR: 2012		
Structure Reference Number	STRUCTURE NAME	Next Principal Inspection Year
A701 60	AE OLD	2012
A701 61	AE NEW	2012
A738 20 C62	PENNYBURN	2012
A75 200	WOODSIDE MILL DAM	2012
A75 250	BROWNRIGG O/B	2012
A75 260	SUMMERFIELD	2012
A75 490	TARFF	2012
A75 590	CARDONESS	2012
A75 610 W10	CARSLUITH	2012
A75 690	BARLAE	2012
A75 690 C5	BARLAE BURN	2012
A75 695	DERVAIRD CC	2012
A75 701	LINTMILL BURN EAST	2012
A75 705	LINTMILL BURN WEST	2012
A75 710	GRAYHILL FARM U/P	2012
A75 715	BANKFIELD FARM U/P	2012
A75 720	STAIRHAVEN BURN	2012
A75 730	WATER OF LUCE	2012
A75 740 W15	WEST CHALLOCH	2012
A75 750	DRUMFLOWER	2012
A76 90 W8	ELIOCK WALL	2012
A77 280 C37	FORD LODGE	2012
A77 312	EAST SANQUHAR U/P	2012
A78 270	DUBBS JUNCTION RAIL	2012
A78 280	DUBBS ROAD(BYREHILL)	2012
A78 300	NETHERMAINS CC	2012
A78 320	A737 FLYOVER O/B	2012
A78 330	KILWINNING LINK E.I	2012
A78 360	LONG DRIVE O/B	2012
A78 370 F	FOOTBRIDGE 6	2012
A78 380 F	FOOTBRIDGE 5	2012
A78 390	BANK STREET O/B	2012
A78 400 F	FOOTBRIDGE 4	2012
A78 410	MILL ROAD O/B	2012
A78 430	ANNICK ROAD O/B	2012
A78 460	UNDERPASS 3	2012
A78 480 F	FOOTBRIDGE 3	2012
A78 6	NEWTON ST STRCT RAIL	2012

NEXT PRINCIPAL INSPECTION YEAR: 2012		
Structure Reference Number	STRUCTURE NAME	Next Principal Inspection Year
A78S 440	WARRIX I/C N O/B	2012
A78S 450	WARRIX I/C S O/B	2012
A898 90 H4V	CAM 4	2012
M73 1-2 G10	GANTRY 3 REF. 06010	2012
M73 1-2 G5	GANTRY 4 REF. 06990	2012
M73 1-2 G50	GANTRY REF. 06020	2012
M73 1-2 G70	GANTRY 5 REF. 06030	2012
M73 1-2 G90	GANTRY 7 REF. 06040	2012
M73 1-2 H28V	CAM 028	2012
M73 2-2 40	M73 OVER A89	2012
M73 2-2 H27V	CAM 027	2012
M73 2-3 10	MANSE ROAD RAIL	2012
M73S 2-2 50	M8 R/BOUT-M73 NB SR	2012
M73S 2-2 60	M73 SB-M8 R/BOUT SR	2012
M74 2-2 10	CARMYLE AVENUE I/C	2012
M74 3-2 30	GREENOAKHILL U/P	2012
M74 3-2 80	M74 RAIL	2012
M74 3-2 G37	NO 14390	2012
M74 3-2 G45	NO.14070	2012
M74 3-2 G60	NO. 14060	2012
M74 4-4 H29V	CAM 029	2012
M74 5-4 G78	NO. 14900	2012
M74 7-8 G35	VMS/Q2	2012
M74S 3-2 G25	NO 14080	2012
M77 1-0 W55	W099 GOWER TERRACE	2012
M77 1-0 W75	W085 RAMP F WEST	2012
M8 10-10 H22V	CAM 022	2012
M8 11-11 H279	HIGH MAST LIGHT	2012
M8 11-11 H280	HIGH MAST LIGHT	2012
M8 11-11 H281	HIGH MAST LIGHT	2012
M8 11-12 C20	MILNCROFT SERVICE	2012
M8 11-12 H19V	CAM 019	2012
M8 11-12 H258	HIGH MAST LIGHT	2012
M8 11-12 H259	HIGH MAST LIGHT	2012
M8 11-12 H260	HIGH MAST LIGHT	2012
M8 11-12 H261	HIGH MAST LIGHT	2012
M8 11-12 H262	HIGH MAST LIGHT	2012
M8 11-12 H263	HIGH MAST LIGHT	2012
M8 11-12 H264	HIGH MAST LIGHT	2012
M8 11-12 H265	HIGH MAST LIGHT	2012
M8 11-12 H266	HIGH MAST LIGHT	2012
M8 11-12 H267	HIGH MAST LIGHT	2012
M8 11-12 H268	HIGH MAST LIGHT	2012
M8 11-12 H269	HIGH MAST LIGHT	2012
M8 11-12 H270	HIGH MAST LIGHT	2012
M8 11-12 H271	HIGH MAST LIGHT	2012
M8 11-12 H272	HIGH MAST LIGHT	2012
M8 11-12 H273	HIGH MAST LIGHT	2012

NEXT PRINCIPAL INSPECTION YEAR: 2012		
Structure Reference Number	STRUCTURE NAME	Next Principal Inspection Year
M8 11-12 H274	HIGH MAST LIGHT	2012
M8 11-12 H275	HIGH MAST LIGHT	2012
M8 11-12 H276	HIGH MAST LIGHT	2012
M8 11-12 H277	HIGH MAST LIGHT	2012
M8 11-12 H278	HIGH MAST LIGHT	2012
M8 11-12 W50	GARTRAIG R/W WEST	2012
M8 11-12 W52	GARTCRAIG CENTRAL	2012
M8 11-12 W54	GARTCRAIG EAST	2012
M8 11-12 W60	W002 GARTCRAIG RD W	2012
M8 11-12 W90	W004 CUMBERNAULD RMP	2012
M8 12-12 H255	HIGH MAST LIGHT	2012
M8 12-12 H256	HIGH MAST LIGHT	2012
M8 12-12 H257	HIGH MAST LIGHT	2012
M8 12-13 H18V	CAM 018	2012
M8 12-13 H245	HIGH MAST LIGHT	2012
M8 12-13 H246	HIGH MAST LIGHT	2012
M8 12-13 H247	HIGH MAST LIGHT	2012
M8 12-13 H248	HIGH MAST LIGHT	2012
M8 12-13 H249	HIGH MAST LIGHT	2012
M8 12-13 H250	HIGH MAST LIGHT	2012
M8 12-13 H251	HIGH MAST LIGHT	2012
M8 12-13 H252	HIGH MAST LIGHT	2012
M8 12-13 H253	HIGH MAST LIGHT	2012
M8 12-13 H254	HIGH MAST LIGHT	2012
M8 13-13 H235	HIGH MAST LIGHT	2012
M8 13-13 H236	HIGH MAST LIGHT	2012
M8 13-14 H224	HIGH MAST LIGHT	2012
M8 13-14 H225	HIGH MAST LIGHT	2012
M8 13-14 H226	HIGH MAST LIGHT	2012
M8 13-14 H227	HIGH MAST LIGHT	2012
M8 13-14 H228	HIGH MAST LIGHT	2012
M8 13-14 H229	HIGH MAST LIGHT	2012
M8 13-14 H230	HIGH MAST LIGHT	2012
M8 13-14 H231	HIGH MAST LIGHT	2012
M8 13-14 H232	HIGH MAST LIGHT	2012
M8 13-14 H233	HIGH MAST LIGHT	2012
M8 13-14 H234	HIGH MAST LIGHT	2012
M8 14-14 G1	VMS/V	2012
M8 14-14 H17V	CAM O17	2012
M8 14-14 H222	HIGH MAST LIGHT	2012
M8 14-14 H223	HIGH MAST LIGHT	2012
M8 14-15 G10	NO.04-960	2012
M8 15-15 W22	TOWNHEAD PLAZA W014	2012
M8 15-15 W35	MARTYRS SCHOOL SOUTH	2012
M8 15-15 W36	MARTYRS SCHOOL CENT.	2012
M8 15-15 W37	MARTYRS SCHOOL NORTH	2012
M8 15-16 G90	NO.02-900	2012
M8 16-16 H90V	CAM 090	2012

NEXT PRINCIPAL INSPECTION YEAR: 2012		
Structure Reference Number	STRUCTURE NAME	Next Principal Inspection Year
M8 16-17 G15	NO.02-048	2012
M8 16-17 G50	NO.02-046	2012
M8 16-17 G95	NO.02-044	2012
M8 16-17 W25	W032 UPGRADE STAGE 2	2012
M8 17-18 W47	WEST TO RAMP K NORTH	2012
M8 19-19 F70	ANDERSTON X F/B	2012
M8 19-19 G10	NO.02-030	2012
M8 19-19 H121	HIGH MAST LIGHT	2012
M8 19-19 H126	HIGH MAST LIGHT	2012
M8 20-21 G40	NO.01-010	2012
M8 20-21 G70	7010	2012
M8 21-21 W50	W071 SCOTLAND ST 8	2012
M8 21-22 G10	NO.01-020	2012
M8 21-22 G70	NO.01-030	2012
M8 22-23 F62	BEECH AVENUE F/B	2012
M8 22-23 H10V	CAM 010	2012
M8 24-25 H9V	CAM 009	2012
M8 24-25 W40	W091 DRUMOYNE ROAD	2012
M8 25-25 H8V	CAM 008	2012
M8 25-26 G75	NO 01-115	2012
M8 25-26 H78V	CAM 078	2012
M8 26-27 G70	VMS/S	2012
M8 26-27 H50V	CAM 050	2012
M8 26-27 H51V	CAM 051	2012
M8 28-29 C42	WATER DEPT. CROSSING	2012
M8 28-29 G30	NO.01-200	2012
M8 28-29 G80	NO.01-210	2012
M8 29-29 H55V	CAM 055	2012
M8 29-30 G15	NO.01-810	2012
M8 8-8 70	A89 WB O/B	2012
M8 8-8 90	A89 EB O/B	2012
M8 8-8 H12	PLATFORM	2012
M8 8-8 H15	PLATFORM	2012
M8 8-8 H17	PLATFORM	2012
M8 8-8 H19	PLATFORM	2012
M8 8-8 H22	PLATFORM	2012
M8 8-8 H24	PLATFORM	2012
M8 8-8 H26	PLATFORM	2012
M8 8-8 H53	PLATFORM	2012
M8 8-8 H55	PLATFORM	2012
M8 9-10 H23V	CAM 023	2012
M80 1-1 W10	W096 PROVAN R/W WEST	2012
M80 1-1 W20	W097 PROVAN R/W EAST	2012
M8S 13-13 H39V	CAM 039	2012
M8S 15-15 F100	ROYAL INFIRMARY F/B	2012
M8S 15-15 G10	NO.03-990	2012
M8S 15-15 G20	NO.03-010	2012
M8S 19-19 H127	HIGH MAST LIGHT	2012

NEXT PRINCIPAL INSPECTION YEAR: 2012		
Structure Reference Number	STRUCTURE NAME	Next Principal Inspection Year
M8S 19-19 H128	HIGH MAST LIGHT	2012
M8S 20-20 H115	HIMAST LIGHT	2012
M8S 20-20 H117	HIGH MAST LIGHT	2012
M8S 20-20 H119	HIGH MAST LIGHT	2012
M8S 8-8 110	M8 EB - A89 EB SLIP	2012
M8S 8-8 120	M8 EB - M73 SB SLIP	2012
M8S 8-8 130	M8 EB - M73 SB SLIP	2012
M8S 8-8 40	OFF M8 R/BOU WB	2012
M8S 8-8 50	ONTO M8 R/B EB SLIP	2012
M8S 8-8 60	M8 R/BOU NW LEG	2012
M8S 8-8 80	A89 WB - M8 WB SLIP	2012
M8S 8-8 H10	PLATFORM	2012
M8S 8-8 H11	PLATFORM	2012
M8S 8-8 H13	PLATFORM	2012
M8S 8-8 H14	PLATFORM/CRADLE	2012
M8S 8-8 H16	PLATFORM	2012
M8S 8-8 H18	PLATFORM/CRADLE	2012
M8S 8-8 H20	PLATFORM/CRADLE	2012
M8S 8-8 H21	PLATFORM/CRADLE	2012
M8S 8-8 H23	PLATFORM/CRADLE	2012
M8S 8-8 H25	PLATFORM/CRADLE	2012
M8S 8-8 H27	PLATFORM	2012
M8S 8-8 H30	HIGH MAST LIGHT 30	2012
M8S 8-8 H31	PLATFORM	2012
M8S 8-8 H32	PLATFORM	2012
M8S 8-8 H33	PLATFORM	2012
M8S 8-8 H34	PLATFORM	2012
M8S 8-8 H35	PLATFORM	2012
M8S 8-8 H36	PLATFORM/CRADLE	2012
M8S 8-8 H37	PLATFORM/CRADLE	2012
M8S 8-8 H38	PLATFORM	2012
M8S 8-8 H39	PLATFORM	2012
M8S 8-8 H54	PLATFORM/CRADLE	2012
M8S 8-8 H56	PLATFORM/CRADLE	2012
M8S 8-8 H57	PLATFORM/CRADLE	2012
M8S 8-8 H58	PLATFORM	2012
M8S 8-8 H59	PLATFORM/CRADLE	2012
M8S 8-8 H6	PLATFORM	2012
M8S 8-8 H60	PLATFORM/CRADLE	2012
M8S 8-8 H61	PLATFORM	2012
M8S 8-8 H63	PLATFORM	2012
M8S 8-8 H64	PLATFORM	2012
M8S 8-8 H65	PLATFORM	2012
M8S 8-8 H66	PLATFORM	2012
M8S 8-8 H67	PLATFORM	2012
M8S 8-8 H8	PLATFORM	2012
M8S 8-8 H9	PLATFORM	2012

NEXT PRINCIPAL INSPECTION YEAR: 2013		
Structure Reference Number	STRUCTURE NAME	Next Principal Inspection Year
A701 110	BROOMLANDS CC	2013
A701 120	EVAN WATER CC	2013
A726 161 F	NEW LINDORES DR. F/B	2013
A738 10 W40	KILWINNING STATION E	2013
A738 10 W80	KILWINNING STATION W	2013
A75 100	PRIESTHOLM	2013
A75 110	WOODHEAD	2013
A75 120	STAPLETON ROAD O/B	2013
A75 140	HOSPITAL ROAD	2013
A75 150	NORTH STREET O/B	2013
A75 160	ANNAN	2013
A75 165	VIOLETBANK O/B	2013
A75 170	HOWES O/B	2013
A75 170 C30	MUIRHOUSE	2013
A75 175	SEARIGG CATTLE CREEP	2013
A75 180	LANGDYKE CATTLE CRP	2013
A75 185	WEST RAFFLES	2013
A75 200 G90	VMS/Q5	2013
A75 270	BLOOMFIELD EAST	2013
A75 280	BLOOMFIELD SOUTH	2013
A75 290	BLOOMFIELD NORTH	2013
A75 30	KIRTLE WATER	2013
A75 375	NEW CARGEN NSS	2013
A75 385	TERRAUGHTIE	2013
A75 410	RAMHILL NEW	2013
A75 50	RIGMOOR	2013
A75 60	NIVENHILL O/B	2013
A75 60 C25	GREEN U/P	2013
A75 60 C40	IRVINGTON U/P	2013
A75 610	CARSLUITH	2013
A75 620	KIRKBRIDE	2013
A75 630	NEW MONEYPOL	2013
A75 640	BARHOLM U/P	2013
A75 670	CREE	2013
A75 680	SHENNANTON	2013
A75 720 C25	STAIRHAVEN SUBWAY	2013
A76 170	POLSHILL	2013
A76 170 C60	BURNTON	2013
A76 180	POLQUINTER	2013
A76 20	NEWBRIDGE	2013
A76 220	BORLAND	2013
A76 320 W80	RODINGHEAD	2013
A76 340 C46	WOODHEAD	2013
A76 90	MENNOCK NEW	2013
A77 20	BISHOPBURN	2013
A77 295	ANNFIELD BURN	2013
A77 30	MESSAN	2013
A77 300	OVERMILLS	2013

NEXT PRINCIPAL INSPECTION YEAR: 2013		
Structure Reference Number	STRUCTURE NAME	Next Principal Inspection Year
A77 305	THORNEYFLAT FARM U/P	2013
A77 312 C50	CLUNE	2013
A77 320	LADYKIRK	2013
A77 330 C46	RAITH BURN	2013
A77 330 W90	PIT ACCESS	2013
A77 330 W98	POW BURN	2013
A77 340	ADAMTON ROAD	2013
A77 350	POW BURN	2013
A77 360 W41	DANEPARK	2013
A77 40	BEOCH	2013
A78 170	SOUTH ANNAN	2013
A78 40	RIVER DAFF INVERKIP	2013
A78 50	BRUEACRE	2013
A78 50 W38	ADJACENT NORTH LODGE	2013
A78 50 W59	WEMYSS BAY ROAD/RAIL	2013
A78 50 W80	WEMYSS BAY ROAD	2013
A78 520 F	FOOTBRIDGE 2	2013
A78 530 F	FOOTBRIDGE 1	2013
A78 530 W86	AUCHENGATE	2013
A78 560	HILLHOUSE ROAD O/B	2013
A78 560 C53	BARASSIE BURN	2013
A78 570	COLLENAN ROAD O/B	2013
A78 570 C20	COLLENAN BURN	2013
A78 570 C33	COLLENAN DITCH	2013
A78 570 C74	CRUMMIEHOLM	2013
A78 580	DUNDONALD ROAD O/B	2013
A78 590 W52	FULLARTON	2013
A78 60 W99	AT KELLY BURN BRIDGE	2013
A78 600	RUMBLING BURN	2013
A78 600 C20	CROOKSIDE	2013
A78 610	DUTCHHOUSE U/P	2013
A78S 500	NEWHOUSE I/C N O/B	2013
A78S 510	NEWHOUSE I/C S O/B	2013
M73 1-1 H13	PLATFORM/CRADLE 9-13	2013
M73 1-1 H14	PLATFORM/CRADLE 9-14	2013
M73 1-1 H16	PLATFORM/CRADLE	2013
M73 1-2 G75	GANTRY 6 REF. 06970	2013
M73 2-2 H1	PLATFORM	2013
M73 2-2 H2	PLATFORM	2013
M73 2-2 H3	PLATFORM	2013
M73 2-2 H4	PLATFORM	2013
M73 2-2 H5	PLATFORM	2013
M73 2-2 H7	PLATFORM	2013
M73 2-3 G15	GANTRY 11 REF.06950	2013
M73 2-3 G20	GANTRY 12 REF.06940	2013
M73 2-3 G5	GANTRY 10 REF.06960	2013
M73S 1-1 H15	PLATFORM/CRADLE	2013
M73S 1-1 H17	PLATFORM/CRADLE	2013

NEXT PRINCIPAL INSPECTION YEAR: 2013		
Structure Reference Number	STRUCTURE NAME	Next Principal Inspection Year
M74 2-1 H56V	CAM 056	2013
M74 3-2 G65	NO. 14940	2013
M74 3-2 G88	NO. 14950	2013
M74 3-2 H57V	CAM 057	2013
M74 3-3 H58V	CAM 058	2013
M74 3-3 H59V	CAM 059	2013
M74 5-4 G60	14890	2013
M74 5-4 G85	14910	2013
M77 1-0 30	NITHSDALE ROAD O/B	2013
M77 1-0 G75	7960	2013
M77 1-1 H112V	CAM 112	2013
M77 2-1 G45	NO.07-920	2013
M77 2-1 G50	NO.07-070	2013
M77 2-1 G70	NO.07-930	2013
M77 2-1 G75	NO.07-060	2013
M77 2-1 H113V	CAM 113	2013
M77 2-1 H114V	CAM 114	2013
M77 2-2 H115V	CAM 115	2013
M77 3-2 H116V	CAM 116	2013
M77 3-2 H117V	CAM 117	2013
M77 4-3 H118V	CAM 118	2013
M77 4-4 H119V	CAM 119	2013
M77 5-4 G85	VMS/V4	2013
M77 5-4 H120V	CAM 120	2013
M77 5-4 H121V	CAM 121	2013
M8 10-10 G20	NO. 04-140	2013
M8 11-11 H20V	CAM 020	2013
M8 15-16 H15V	CAM 015	2013
M8 16-17 G10	NO.02-910	2013
M8 16-17 G70	NO.02-920	2013
M8 16-17 G90	NO.02-930	2013
M8 16-17 H14V	CAM 014	2013
M8 17-18 H80V	CAM 080	2013
M8 18-19 G60	NO.02-950	2013
M8 18-19 H13V	CAM 013	2013
M8 19-19 10	M8 MAIN APP NORTH EB	2013
M8 19-19 20	M8 MAIN APP NORTH WB	2013
M8 20-20 10	M8 MAIN APP SOUTH EB	2013
M8 20-20 20	M8 MAIN APP SOUTH WB	2013
M8 20-20 H12V	CAM 012	2013
M8 21-21 H11V	CAM 011	2013
M8 22-23 H111V	CAM 111	2013
M8 24-24 10	HELEN STREET O/B	2013
M8 25-26 H76V	CAM 076	2013
M8 25-26 H77V	CAM 077	2013
M8 25-26 H7V	CAM 007	2013
M8 27-28 H52V	CAM 052	2013
M8 27-28 H53V	CAM 053	2013

NEXT PRINCIPAL INSPECTION YEAR: 2013		
Structure Reference Number	STRUCTURE NAME	Next Principal Inspection Year
M8 29-29 10	ST JAMES I/C E O/B	2013
M8 29-29 20	ST JAMES I/C W O/B	2013
M8 29-29 H54V	CAM 054	2013
M8 29-30 25	BLACK CART	2013
M8 29-30 45	GRYFE	2013
M8 29-30 50	GEORGETOWN ROAD	2013
M8 29-30 G50	VMS/B1	2013
M8 30-31 G60	VMS/B2	2013
M8 8-8 H25V	CAM 025	2013
M8 8-8 H26V	CAM 026	2013
M8 8-9 H24V	CAM 024	2013
M80 1-1 H40V	CAM 040	2013
M80 1-2 H41V	CAM 041	2013
M80 1-2 H42V	CAM 042	2013
M80 2-2 H43V	CAM 043	2013
M8S 19-19 50	WATERLOO ST ON RAMP	2013
M8S 19-19 60	BOTHWELL ST OFF RAMP	2013
M8S 19-19 70	NORTH ST OFF RAMP	2013
M8S 19-19 80	NEWTON ST ON RAMP	2013
M8S 20-20 30	WEST STREET OFF RAMP	2013
M8S 20-20 40	WEST STREET ON RAMP	2013
M8S 22-22 G50	7970	2013

NEXT PRINCIPAL INSPECTION YEAR: 2014		
Structure Reference Number	STRUCTURE NAME	Next Principal Inspection Year
A701 100 C50	BUITS BURN	2014
A701 130	EVAN WATER	2014
A725 10	WHITEMOSS U/P SOUTH	2014
A725 140	AUCHENINRAITH ROAD	2014
A725 150	GLASGOW ROAD	2014
A725 170	WHISTLEBERRY ESTATE	2014
A725 180	BOTHWELL ROAD O/B	2014
A725 190	NEW BOTHWELL (CLYDE)	2014
A725 20	WHITEMOSS U/P WEST	2014
A725 210	ORBISTON ROAD	2014
A725 215	BOGS BRAE CREEP	2014
A725 230	BELLZIEHILL S O/B	2014
A725 240	BELLZIEHILL N O/B	2014
A725 250	N ALDERSTON I/C O/B	2014
A725 260	ROSEHALL O/B	2014
A725 260 W50	SHAWHEAD	2014
A725 30	WHITEMOSS U/P EAST	2014
A725 40	WHITEMOSS U/P NORTH	2014
A725 50	MAXWELLTON AVE U/P	2014
A737 100 W81	TOFTS CORNER	2014
A737 70 C4	SMITHSTONE	2014

NEXT PRINCIPAL INSPECTION YEAR: 2014		
Structure Reference Number	STRUCTURE NAME	Next Principal Inspection Year
A738 0 W98	BRIDGE 12 SOUTH	2014
A738 0 W99	BRIDGE 12 NORTH	2014
A738 10	BR U/B 12 RAIL	2014
A738 20	BR U/B 2 RAIL	2014
A738 20 W0	BRIDGE 2 SW	2014
A75 130	BNFL PIPE CROSSING	2014
A75 40	RIGG RAIL	2014
A75 480	THREAVE	2014
A75 480 W80	RINGFORD WALL	2014
A75 600	SKYREBURN	2014
A75 605	KIRKDALE SSS	2014
A75 650	KNOCKDOON U/P	2014
A75 650 C50	PULWHAT	2014
A75 660 C60	CALGOW	2014
A75 680 C25	ARDACHIE	2014
A75 680 C60	CRAIGHLAW	2014
A75 750 C85	AIRD	2014
A75 750 G30	VMS/Q7	2014
A75 760	STRANRAER RAIL	2014
A76 210	NEW CUMNOCK STN RAIL	2014
A76 230	LMS RAIL U/B 169	2014
A76 285	149B RAIL	2014
A76 285 C50	DARNLAW BURN	2014
A76 288	DARNLAW FARM O/B	2014
A76 291	DIPPOL BURN NEW	2014
A76 330	BARGOWER RAIL	2014
A76 350	HURLFORD BYPASS 22	2014
A77 10	CAIRNRYAN ROAD RAIL	2014
A77 100	KILPHIN	2014
A77 100 C99	BALLANTRAE CC	2014
A77 140	LENDALFOOT	2014
A77 150 W3	SHALLOCH SEA WALL	2014
A77 160	FLUSHES	2014
A77 180	BRIDGEMILL NEW	2014
A77 190	BRIDGEMILL U/P	2014
A77 200	BRIDGEMILL RAIL	2014
A77 210	DIPPLE	2014
A77 210 C43	DOWHILL	2014
A77 220	BALKENNA	2014
A77 230	TURNBERRY	2014
A77 230 C86	MAINS	2014
A77 230 C92	PARISH MARCH	2014
A77 230 W3	TURNBERRY WEST	2014
A77 230 W4	TURNBERRY NORTH	2014
A77 230 W5	TURNBERRY SOUTH	2014
A77 240	KIRKOSWALD ROAD RAIL	2014
A77 240 W2	CORAL GLEN	2014
A77 260	SMITHSTON	2014

NEXT PRINCIPAL INSPECTION YEAR: 2014		
Structure Reference Number	STRUCTURE NAME	Next Principal Inspection Year
A77 270	MINISHANT	2014
A77 285	GLENGALL	2014
A77 310	BR U/B 5A RAIL	2014
A77 390	CRAIGIE ROAD	2014
A77 470 F	MILTON ROAD F/B	2014
A77 485	CRAUFURDLAND U/P	2014
A77 490	CRAUFURDLAND WATER	2014
A77 500	ASSLOSS	2014
A77 510	BROOMBRAE O/B	2014
A77 60	CLADDYHOUSE	2014
A77 70	BURNFOOT NEW	2014
A77 80	GALLOWAY	2014
A77 80 W10	ALTEHIT WEST	2014
A77 80 W14	ALTEHIT NORTH	2014
A77 80 W5	MARCHBURN SOUTH	2014
A77 80 W6	MARCHBURN NORTH	2014
A77 80 W9	ALTEHIT EAST	2014
A77 80 W98	HAGGSTONE	2014
A77 85	HAGGSTONE	2014
A77 85 C30	FINNARTS LODGE	2014
A77 85 W1	GLEN APP CHURCH	2014
A77 85 W25	FINNARTS	2014
A77 87	NORTH MARK	2014
A77 90	ALTIMEG	2014
A77S 410 W67	STRATHY PLACE	2014
A78 100 W1	NODDSDALE EAST	2014
A78 100 W2	NODDSDALE WEST	2014
A78 110 W33	HAYLIE HOUSE	2014
A78 110 W37	SEABANK	2014
A78 120 W98	FAIRLIE TUNNEL	2014
A78 130 W10	ST PAULS NORTH	2014
A78 130 W21	SCHOOL BRAE	2014
A78 130 W27	ST MARGARETS	2014
A78 150 W87	HUNTERSTON ORE WEST	2014
A78 160 W3	HUNTERSTON ORE EAST	2014
A78 180 W24	GLEN BURN NORTH	2014
A78 180 W84	GLEN BURN SOUTH	2014
A78 227	SORBIE FARM U/P	2014
A78 235	SORBIE ROAD O/B	2014
A78 242	CORSANKELL FARM U/P	2014
A78 245	GREENHEAD ROAD	2014
A78 255	HAYOCKS ROAD O/B	2014
A78 370 C78	RED BURN	2014
A78 450 C45	WARRIX NORTH	2014
A78 450 C96	WARRIX SOUTH	2014
A78 540	AUCHENGATE RAIL	2014
A78 540 C31	GAILES BURN	2014
A78 550	A759	2014

NEXT PRINCIPAL INSPECTION YEAR: 2014		
Structure Reference Number	STRUCTURE NAME	Next Principal Inspection Year
A78 580 C16	CROSSBURN	2014
A78 580 C89	CORRAITH	2014
A78 590	CORRAITH ROAD	2014
A78 7	SOUTH STREET	2014
A78 70 W0	BEACH COTTAGE WALL	2014
A78 70 W1	NORTH CHURCH	2014
A78 70 W2	BEACH COTTAGE SOUTH	2014
A78 70 W4	LONGHILL SOUTH	2014
A78 70 W58	SKELMORLIE WALL	2014
A78 80 W29	ASHCRAIG LODGE	2014
A78 80 W32	ASHCRAIG LODGE SOUTH	2014
A78 80 W44	GLENHAVEN WALL	2014
A78 80 W87	AUCHENGARTH SOUTH	2014
A78 90 W16	KNOCK CASTLE NORTH	2014
A78 90 W30	KNOCK CASTLE LODGE N	2014
A78 90 W66	GREENOCK WALL	2014
A78 90 W81	HOLLYWOOD	2014
A8 150	PARKLEE U/P	2014
A8 160 F	KELBURN F/B	2014
A8 195	JAMES WATT DOCK	2014
A8 200	GREENOCK N SUBWAY	2014
A8 210	GREENOCK S SUBWAY	2014
A82 110 C50	GARSHAKE	2014
A82 120	BARLOAN	2014
A82 130	MURROCH PEDEST U/P	2014
A82 150 C95	HOWGATE BURN	2014
A82 160	HOWGATE	2014
A82 160 W96	THIRD AVENUE	2014
A82 170 F	CARMAN F/B	2014
A82 180	CARDROSS	2014
A82 180 C50	CULVERT 5	2014
A82 190	MILLBURN	2014
A82 200	OVERTON	2014
A82 200 W70	TULLICHEWAN STABLES	2014
A82 200 W8	BENVUE	2014
A82S 155	DALMOAK CATTLE U/P	2014
A82S 157	DALMOAK RAIL	2014
A898 80 C90	TOLL SERVICE TUNNEL	2014
A898 90	A726 ERSKINE APPR'CH	2014
A898S 110	A898 SB SR-BRAES RD	2014
A898S 120	A82 WB SR OVER A898	2014
A898S 130	A82 WB SR OVER A898	2014
A898S 140	A898 EB SR OVER A82	2014
A898S 150	A898 WB SR OVER A878	2014
A898S 160	A898 WB SR-BRAES RD	2014
M73 1-1 H12	PLATFORM/CRADLE	2014
M73 2-2 H45	PLATFORM	2014
M73 2-2 H46	PLATFORM	2014

NEXT PRINCIPAL INSPECTION YEAR: 2014		
Structure Reference Number	STRUCTURE NAME	Next Principal Inspection Year
M73 2-2 H49	PLATFORM	2014
M73 2-2 H50	PLATFORM/CRADLE	2014
M73 2-2 H51	PLATFORM	2014
M73 2-2 H52	PLATFORM	2014
M73 2-3 22	COMMONHEAD ROAD O/B	2014
M73 2-3 33	LOCHWOOD ROAD O/B	2014
M73 2-3 47	BOTHLIN O/B	2014
M73 2-3 48	BOTHLIN	2014
M73 2-3 58	WOODNEUK AVE I/C O/B	2014
M73 2-3 65	JOHNSTONE ROAD O/B	2014
M73 2-3 70	BOTHLIN BURN	2014
M73 2-3 80	DRUMCAVIL	2014
M73S 1-1 10	M73 SB - M74 WB SLIP	2014
M73S 1-1 20	M74 EB - M73 NB SLIP	2014
M73S 1-1 30	M73 SB - M74 WB SLIP	2014
M73S 1-1 40	M73 SB - M74 EB SLIP	2014
M73S 2-2 H40	PLATFORM/CRADLE	2014
M73S 2-2 H41	PLATFORM/CRADLE	2014
M73S 2-2 H42	PLATFORM/CRADLE	2014
M73S 2-2 H43	PLATFORM/CRADLE	2014
M73S 2-2 H44	PLATFORM/CRADLE	2014
M73S 2-2 H47	PLATFORM/CRADLE	2014
M73S 2-2 H48	PLATFORM/CRADLE	2014
M74 12-12 10	BONCASTLE	2014
M74 2-1 G60	NO.14960	2014
M74 3-2 G95	NO. 14050	2014
M74 4-3 70	NORTH CALDER	2014
M74 5-4 15	BOTHWELL PK FARM O/B	2014
M74 5-4 30	FALLSIDE ROAD O/B	2014
M74 5-4 40	BELLSHILL ROAD	2014
M74 5-4 55	SPINDLEHOWE U/P	2014
M74 5-4 70	OLD MILL ROAD O/B	2014
M74 5-4 80	POWBURN TOLL O/B	2014
M74 5-4 90	OLD GLASGOW ROAD O/B	2014
M74 5-5 10	BOTHWELLHAUGH I/C N	2014
M74 5-5 20	BOTHWELLHAUGH I/C S	2014
M74 6-5 20	CADZOW U/P	2014
M74 6-6 H21V	CAM 021	2014
M74 9-8 5	ROGERHILL FARM U/P	2014
M74S 4-4 10	M74 WB - M73 NB SLIP	2014
M77 1-0 70	GOWER STREET RAIL	2014
M77 1-0 G10	NO.07-050	2014
M77 1-0 G20	NO.07-950	2014
M77 1-1 10	DUMBRECK ROAD O/B	2014
M77 1-1 20	DUMBRECK ROAD/RAIL	2014
M77 2-1 30	WHITE CART	2014
M77 2-1 F40	CORKERHILL F/B	2014
M77 2-1 G10	NO.07-080	2014

NEXT PRINCIPAL INSPECTION YEAR: 2014		
Structure Reference Number	STRUCTURE NAME	Next Principal Inspection Year
M77 2-1 G95	NO.07-940	2014
M77 2-2 10	BARRHEAD RD I/C O/B	2014
M77 3-2 F30	DARNLEY-ARDEN F/B	2014
M77 3-2 G25	NO.07-110	2014
M77 3-2 G35	NO.07-890	2014
M77 3-2 G50	NO.07-100	2014
M77 3-2 G60	NO.07-900	2014
M77 3-2 G90	NO.07-090	2014
M77 3-2 G95	NO.07-910	2014
M77 3-3 10	NITSHILL ROAD O/B	2014
M77 3-3 20	NITSHILL U/P	2014
M77 4-3 20	PATTERTON RAIL	2014
M77 4-3 50	PATTERTON FARM O/B	2014
M77 4-3 G55	NO.07-870	2014
M77 4-3 G90	NO.07-880	2014
M77 4-4 10	CROOKFUR ROAD	2014
M77 5-4 10	MALLETSHEUCH 2	2014
M77 5-4 20	AYR ROAD O/B	2014
M77 5-4 30	MALLETSHEUCH 1	2014
M77 5-4 40	NETHERPLACE ROAD	2014
M77 5-4 50	CAPELRIG BURN	2014
M77 5-4 70	BARRHEAD ROAD O/B	2014
M8 10-10 10	WESTERHOUSE ROAD O/B	2014
M8 10-11 F40	GARTHAMLOCK RD F/B	2014
M8 10-11 F60	HORNDEAN CRESENT F/B	2014
M8 10-11 G30	VMS/V1	2014
M8 11-11 10	STEPPS ROAD O/B	2014
M8 11-11 G10	NO.04-110	2014
M8 11-11 G20	NO.04-890	2014
M8 11-12 60	GARTCRAIG ROAD O/B	2014
M8 11-12 F25	LONGSTONE ROAD F/B	2014
M8 11-12 G20	NO.04-900	2014
M8 11-12 G25	NO.04-100	2014
M8 11-12 G50	NO.04-090	2014
M8 11-12 G95	NO.04-080	2014
M8 12-12 10	CUMBERNAULD ROAD O/B	2014
M8 13-13 30	PROVAN VIADUCT EB	2014
M8 13-13 31	PROVAN VIADUCT WB	2014
M8 14-15 F60	JAMES NISBET ST F/B	2014
M8 15-15 50	TOWNHEAD RAMP K EAST	2014
M8 15-15 H16V	CAM 016	2014
M8 15-16 G10	NO.02-880	2014
M8 15-16 G50	NO.02-890	2014
M8 17-17 G10	NO.02-940	2014
M8 18-18 10	CHARING X TUNNEL O/B	2014
M8 18-19 10	CHARING X PODIUM O/B	2014
M8 18-19 40	BATH STREET O/B	2014
M8 18-19 80	ST VINCENT ST O/B	2014

NEXT PRINCIPAL INSPECTION YEAR: 2014		
Structure Reference Number	STRUCTURE NAME	Next Principal Inspection Year
M8 19-20 G20	NO.02-020	2014
M8 19-20 G30	NO.02-960	2014
M8 19-20 G50	NO.02-010	2014
M8 19-20 G90	NO.02-970	2014
M8 22-23 50	BELLAHOUSTON RAIL	2014
M8 23-23 10	DUMBRECK ROAD	2014
M8 25-25 20	BERRYKNOWES RD VDCT	2014
M8 9-10 50	WARDIE ROAD O/B	2014
M8 9-10 G30	NO.04-840	2014
M8 9-10 G35	NO.04-160	2014
M8 9-10 G5	NO.04-170	2014
M8 9-10 G90	NO.04-860	2014
M8 9-9 10	EASTERHOUSE ROAD O/B	2014
M8S 17-17 10	CHARING X OFF RAMP J	2014
M8S 19-19 40	STOBCROSS OFF RAMP	2014
M8S 21-21 20	SCOTLAND STREET	2014
M8S 22-22 30	RAMP A RENFREW 1 O/B	2014
M8S 25-25 F40	RAMP A F/B	2014
M8S 8-8 H62	PLATFORM	2014

NEXT PRINCIPAL INSPECTION YEAR: 2015		
Structure Reference Number	STRUCTURE NAME	Next Principal Inspection Year
A701 100	BROOMLANDS RAIL	2015
A701 20	JERICO	2015
A701 30	WALLTREE	2015
A701 40	MOORFOOT	2015
A701 80	MOLLINBURN	2015
A701 90	ST ANNE'S	2015
A725 100	FARM O/B	2015
A725 110	SYDES BRAE	2015
A725 120	HIGH BLANTYRE WEST	2015
A725 130	HIGH BLANTYRE EAST	2015
A725 220	LITTLE PARKHEAD RAIL	2015
A725 255	ROSEHALL BURN	2015
A725 61 W50	WHIRLIES CRIB WALL	2015
A725 70	STONEYMEADOW ROAD	2015
A725 80	WHIRLIES SLIP O/B	2015
A725 90	CALDERWOOD	2015
A726 110	RIGHEAD U/P EAST	2015
A726 120	RIGHEAD U/P SOUTH	2015
A726 130	RIGHEAD U/P NORTH	2015
A726 140	RIGHEAD U/P WEST	2015
A726 150	MURRAYHILL SUBWAY	2015
A726 50	KITTOCH U/B	2015
A737 120	CARSE HEAD	2015
A737 120 C80	COALBURN	2015

NEXT PRINCIPAL INSPECTION YEAR: 2015		
Structure Reference Number	STRUCTURE NAME	Next Principal Inspection Year
A737 120 W20	KERSLAND	2015
A737 140	BR U/B 24 (DISUSED)	2015
A737 200	KILBARCHAN ROAD O/B	2015
A737 210 C50	KILBARCHAN BURN	2015
A737 210 F	NETHER JOHNSON F/B	2015
A737 220	BARROCHAN RD I/C O/B	2015
A737 230	BARBUSH FARM O/B	2015
A737 240 F	KILMALCOLM F/B	2015
A737 250 F	CLIPPENS ROAD F/B	2015
A737 260	BLACK CART WATER 1	2015
A737 265	OLD PATRICK WATER	2015
A737 270	LINCLIVE VIADUCT	2015
A737 280	LINCLIVE ROAD	2015
A737 300	LINCLIVE I/C 1	2015
A74 110	KIRKPATRICK RAIL SSS	2015
A75 110 W95	EAST GHYLL	2015
A75 20 C30	FLOSH BURN	2015
A75 310	GUILLYHILL RAIL	2015
A75 60 C90	DORNOCK BURN	2015
A76 100	WHITEHILL	2015
A76 110	POLBOWER	2015
A76 120	GUILDHALL	2015
A76 120 W40	RIGG	2015
A76 120 W50	RIGG FARM	2015
A76 130	POLNEUL	2015
A76 191 W2	AFTON BRIDGE NW WALL	2015
A76 191 W3	AFTON BRIDGE RAMP	2015
A76 191 W5	AFTON BRIDGE SE WALL	2015
A76 200	NITH	2015
A76 200 F	NITH F/B	2015
A76 220 W0	BORLAND WALL	2015
A76 267	LUGAR WATER	2015
A76 30	AULDGIRTH NEW	2015
A76 300	LMS U/B 2	2015
A76 31	AULDGIRTH OLD	2015
A76 310	HOWFORD	2015
A76 340	BRIDGEHOUSE B'GOWER	2015
A76 60 W95	CARRONBRIDGE	2015
A76 70	CARRON	2015
A76 80	ENTERKIN	2015
A76 85	ENTERKIN SLIP PH 1	2015
A77 110	BALLANTRAE	2015
A77 112 W5	CORMAS HOUSE	2015
A77 115	MEIKLE BENNANE FARM	2015
A77 120 W45	TROAX	2015
A77 120 W47	GAMES LOUP	2015
A77 120 W52	BALSALLOCH SOUTH	2015
A77 120 W53	BALSALLOCH HEAD	2015

NEXT PRINCIPAL INSPECTION YEAR: 2015		
Structure Reference Number	STRUCTURE NAME	Next Principal Inspection Year
A77 120 W87	CARLETON SOUTH	2015
A77 130	CARLETON BURN	2015
A77 140 W47	KENNEDY'S SOUTH	2015
A77 140 W48	KENNEDY'S WEST	2015
A77 140 W82	WHITEHOUSE	2015
A77 140 W83	ARDMILLAN SEA WALL	2015
A77 150	MYOCH	2015
A77 150 W8	CRAIGSKELLY SEA WALL	2015
A77 150 W81	GLENDOUNE	2015
A77 280	MONKWOOD	2015
A77 280 C71	CORTON BURN	2015
A77 330	SHAWHILL O/B	2015
A77 360	WHITESIDE O/B	2015
A77 380	INCHGOTRICK O/B	2015
A77 410	WHATRIGGS O/B	2015
A77 420	RIVER IRVINE NW SLIP	2015
A77 430	RIVER IRVINE (KBP)	2015
A77 440	RIVER IRVINE NE SLIP	2015
A77 450	LONDON ROAD O/B	2015
A77 480	GRASSYARDS ROAD O/B	2015
A77 90 C57	MUILLBANE	2015
A77 90 C90	SMYRTON	2015
A77 90 W25	CARLOCK	2015
A77 90 W82	AUCHENCROSH	2015
A77 90 W90	SMYRTON GABION WALL	2015
A77S 360	BELLFIELD INT'GE S	2015
A77S 370	BELLFIELD INT'GE N	2015
A78 1	HIGH STREET GREENOCK	2015
A78 10	IBM O/B	2015
A78 110 W36	TRIGONI	2015
A78 110 W52	KELBURN	2015
A78 110 W55	RED CROSS HOUSE	2015
A78 2	CROWN STREET SUBWAY	2015
A78 20	BANKFOOT FARM U/P	2015
A78 200 W77	B7048 JUNCTION	2015
A78 200 W91	KINNIN BRAE 1	2015
A78 200 W93	KINNIN BRAE 3	2015
A78 200 W94	KINNIN BRAE 4	2015
A78 200 W95	GALLEON INN	2015
A78 3	INVERKIP ST NEW RAIL	2015
A78 310	GARNOCK WATER	2015
A78 420	ANNICK WATER	2015
A78 430 W39	WARRIX E	2015
A78 430 W53	WARRIX W	2015
A78 470	RIVER IRVINE (IBP)	2015
A78 60 C0	WEMYSS BAY	2015
A78 600 C95	DOW'S BURN	2015
A78 8	INVERKIP ROAD RAIL	2015

NEXT PRINCIPAL INSPECTION YEAR: 2015		
Structure Reference Number	STRUCTURE NAME	Next Principal Inspection Year
A78 9 F	BRANCHTON F/B	2015
A8 130	BROADFIELD EAST RAIL	2015
A8 140	BROADFIELD WEST RAIL	2015
A8 169	DEVOL BURN	2015
A8 169 W90	ARDGOWAN WING WALLS	2015
A8 171	ARDGOWAN STREET	2015
A82 140	MURROCH BURN	2015
A82 150	LEVEN	2015
A82 150 C35	LEVEN WEST	2015
A82S 150 C65	RENTON SLIP NORTH	2015
A82S 150 C94	RENTON SLIP NTH 280	2015
A898 105	N ABUTMENT CHAMBER	2015
M73 2-3 G62	VMS/W7 M73	2015
M73 2-3 W50	GARTCOSH	2015
M73S 1-1 H21	PLATFORM/CRADLE	2015
M73S 2-2 W10	BAILLIESTON 3	2015
M74 10-10 10	WELLBURN O/B	2015
M74 10-9 15	TIEGLUM BURN	2015
M74 10-9 70	VERE ROAD O/B	2015
M74 11-10 10	FOLKERTON MILL O/B	2015
M74 11-10 5	PONIEL WATER	2015
M74 11-10 55	GLECK AND BOG	2015
M74 11-10 75	EASTWOOD O/B	2015
M74 11-10 C60	GALRIG BURN	2015
M74 11-10 W20	FOLKERTON MILL	2015
M74 11-10 W90	CRAIGHEAD MILL	2015
M74 11-10 W91	NETHAN GABION WALL	2015
M74 11-11 10	PONIEL	2015
M74 12-11 20	DOUGLAS WATER	2015
M74 3-3 10	DALDOWIE I/C O/B	2015
M74 4-4 H11	PLATFORM/CRADLE	2015
M74 4-4 H13	PLATFORM/CRADLE	2015
M74 4-4 H16	PLATFORM/CRADLE	2015
M74 4-4 H19	PLATFORM/CRADLE	2015
M74 4-4 H3	PLATFORM/CRADLE	2015
M74 4-4 H4	PLATFORM/CRADLE	2015
M74 4-4 H6	PLATFORM/CRADLE	2015
M74 4-4 H9	PLATFORM/CRADLE	2015
M74 6-5 15	CADZOW BURN	2015
M74 6-5 75	RAITH	2015
M74 6-6 50	M74 OVER M74 SB SR	2015
M74 6-6 60	M74 OVER M74 NB SR	2015
M74 7-6 90	AVON	2015
M74 9-8 20	LAIRS O/B	2015
M74 9-8 30	DRAFFAN U/P	2015
M74 9-8 W20	LAIRS GABION WALL	2015
M74 9-9 10	STRATHAVEN RD	2015
M74S 4-3 10	GREYFRIARS	2015

NEXT PRINCIPAL INSPECTION YEAR: 2015		
Structure Reference Number	STRUCTURE NAME	Next Principal Inspection Year
M74S 4-4 H12	PLATFORM/CRADLE	2015
M74S 6-6 20	A723 SB - M74 NB SR	2015
M74S 6-6 30	M74 NB - A723 NB SR	2015
M74S 6-6 40	M74 SB - A723 SB SR	2015
M74S 9-9 5	STRATHAVEN RD SLIP	2015
M77 1-0 60	GOWER TERRACE	2015
M77 3-2 40	KENNISHEAD ROAD/RAIL	2015
M77 3-2 70	SOUTH POLLOCK U/P	2015
M8 10-10 H303	HIGH MAST LIGHT 303	2015
M8 10-10 H304	HIGH MAST LIGHT 304	2015
M8 10-10 H305	HIGH MAST LIGHT 305	2015
M8 10-10 H306	HIGH MAST LIGHT 306	2015
M8 10-11 H288	HIGH MAST LIGHT	2015
M8 10-11 H289	HIGH MAST LIGHT	2015
M8 10-11 H290	HIGH MAST LIGHT	2015
M8 10-11 H291	HIGH MAST LIGHT	2015
M8 10-11 H292	HIGH MAST LIGHT	2015
M8 10-11 H293	HIGH MAST LIGHT	2015
M8 10-11 H294	HIGH MAST LIGHT	2015
M8 10-11 H295	HIGH MAST LIGHT	2015
M8 10-11 H296	HIGH MAST LIGHT	2015
M8 10-11 H297	HIGH MAST LIGHT	2015
M8 10-11 H298	HIGH MAST LIGHT	2015
M8 10-11 H299	HIGH MAST LIGHTS	2015
M8 10-11 H300	HIGH MAST LIGHT	2015
M8 10-11 H301	HIGH MAST LIGHT	2015
M8 10-11 H302	HIGH MAST LIGHT	2015
M8 11-11 H282	HIGH MAST LIGHT	2015
M8 11-11 H283	HIGH MAST LIGHT	2015
M8 11-11 H284	HIGH MAST LIGHT	2015
M8 11-11 H285	HIGH MAST LIGHT	2015
M8 11-11 H286	HIGH MAST LIGHT	2015
M8 11-11 H287	HIGH MAST LIGHT	2015
M8 11-12 G70	NO.04-910	2015
M8 11-12 G90	NO.04-920	2015
M8 11-12 W95	W003 GARTLOCH RD R/W	2015
M8 12-13 G50	NO.04-930	2015
M8 12-13 G90	NO.04-940	2015
M8 13-13 H237	HIGH MAST LIGHT	2015
M8 13-13 H238	HIGH MAST LIGHT	2015
M8 13-13 H239	HIGH MAST LIGHT	2015
M8 13-13 H240	HIGH MAST LIGHT	2015
M8 13-13 H241	HIGH MAST LIGHT	2015
M8 13-13 H242	HIGH MAST LIGHT	2015
M8 13-13 H243	HIGH MAST LIGHT	2015
M8 13-13 H244	HIGH MAST LIGHT	2015
M8 13-14 F70	BLOCHAIRN F/B 2	2015
M8 13-14 G50	NO.04-950	2015

NEXT PRINCIPAL INSPECTION YEAR: 2015		
Structure Reference Number	STRUCTURE NAME	Next Principal Inspection Year
M8 13-14 H397	HIGH MAST LIGHT	2015
M8 14-14 20	BLOCHAIRN ROAD RAIL	2015
M8 14-14 H221	HIGH MAST LIGHT	2015
M8 14-15 H211	HIGH MAST LIGHT	2015
M8 14-15 H212	HIGH MAST LIGHT	2015
M8 14-15 H213	HIGH MAST LIGHT	2015
M8 14-15 H214	HIGH MAST LIGHT	2015
M8 14-15 H215	HIGH MAST LIGHT	2015
M8 14-15 H216	HIGH MAST LIGHT	2015
M8 14-15 H217	HIGH MAST LIGHT	2015
M8 14-15 H218	HIGH MAST LIGHT	2015
M8 14-15 H219	HIGH MAST LIGHT	2015
M8 14-15 H220	HIGH MAST LIGHT	2015
M8 14-15 H91V	91 J15 TOWNHEAD	2015
M8 15-15 30	TOWNHEAD RAMP J CENT	2015
M8 15-15 40	TOWNHEAD RAMP K CENT	2015
M8 15-15 W10	TOWNHEAD 7 W010	2015
M8 15-15 W14	TOWNHEAD RAMP M W012	2015
M8 15-15 W19	CENTRAL RAMP M SOUTH	2015
M8 15-15 W20	WEST RAMP M SOUTH	2015
M8 15-15 W21	TOWNHEAD RMP M W012E	2015
M8 15-15 W24	TOWNHEAD 9 W015	2015
M8 15-15 W26	TOWNHEAD 10 W016	2015
M8 15-15 W29	RAMP N W1 N'TH W018A	2015
M8 15-15 W30	RAMP N W1 S'TH W018B	2015
M8 15-15 W31	TOWNHEAD RAMP N RW J	2015
M8 15-15 W32	TOWNHEAD RAMP N RW K	2015
M8 15-15 W33	RAMP N RW 2 W018E	2015
M8 15-15 W34	RAMP N RW 3 W018F	2015
M8 15-15 W44	TOWNHEAD RAMP C W023	2015
M8 15-16 F60	NORTH WALLACE ST F/B	2015
M8 15-16 G30	NO.02-060	2015
M8 15-16 G5	NO.02-070	2015
M8 15-16 G80	NO.02-050	2015
M8 16-17 70	WOODSIDE VDUCT EB 11	2015
M8 16-17 75	WOODSIDE VDUCT WB 12	2015
M8 17-17 40	GREAT WESTERN RD O/B	2015
M8 17-17 W15	W035 R/W 17 WOODSIDE	2015
M8 17-17 W20	W036 R/W 24 WOODSIDE	2015
M8 17-17 W25	W037 R/W 25 WOODSIDE	2015
M8 17-17 W47	RAMP J EAST	2015
M8 17-17 W55	W043 W RAMP L	2015
M8 17-18 W55	W046 E TO RAMP K	2015
M8 17-18 W60	W047 E RING ROAD	2015
M8 18-18 W10	CHARING X EAST W049	2015
M8 18-18 W20	BATH ST EAST W051	2015
M8 18-18 W30	CHARING X EAST W053	2015
M8 18-19 G10	NO.02-042	2015

NEXT PRINCIPAL INSPECTION YEAR: 2015		
Structure Reference Number	STRUCTURE NAME	Next Principal Inspection Year
M8 18-19 G20	NO.02-948	2015
M8 18-19 W50	CHARING X WEST W055	2015
M8 18-19 W80	ARGYLE ST EAST W057	2015
M8 18-19 W85	ST VINCENT-ARGYLE SE	2015
M8 21-21 10	SCOT ST VIA OFF RAMP	2015
M8 21-21 11	SCOT ST VDUCT EB SEC	2015
M8 21-21 12	SCOT ST VDCT EB MAIN	2015
M8 21-21 13	SCOT ST VIA WB MAIN	2015
M8 21-21 14	SCOT ST VIA WB SEC	2015
M8 25-25 30	CLYDE TUNNEL APPR'CH	2015
M8 25-26 30	CARDONALD U/P	2015
M8 26-27 G96	NO. 01-870 E/B	2015
M8 27-28 55	WHITE CART VIADUCT	2015
M8 27-28 G10	NO. 01 860 E/B	2015
M8 27-28 G90	NO. 01-850 E/B	2015
M8 8-9 C80	TOLCROSS BURN	2015
M8 8-9 H326	HIGH MAST LIGHT 326	2015
M8 8-9 H327	HIGH MAST LIGHT 327	2015
M8 8-9 H328	HIGH MAST LIGHT 328	2015
M8 8-9 H329	HIGH MAST LIGHT 329	2015
M8 8-9 H330	HIGH MAST LIGHT 330	2015
M8 8-9 H331	HIGH MAST LIGHT 331	2015
M8 8-9 H332	HIGH MAST LIGHT 332	2015
M8 9-10 H307	HIGH MAST LIGHT 307	2015
M8 9-10 H308	HIGH MAST LIGHT 308	2015
M8 9-10 H309	HIGH MAST LIGHT 309	2015
M8 9-10 H310	HIGH MAST LIGHT 310	2015
M8 9-10 H311	HIGH MAST LIGHT 311	2015
M8 9-10 H312	HIGH MAST LIGHT 312	2015
M8 9-10 H313	HIGH MAST LIGHT 313	2015
M8 9-10 H314	HIGH MAST LIGHT 314	2015
M8 9-10 H315	HIGH MAST LIGHT 315	2015
M8 9-10 H316	HIGH MAST LIGHT 316	2015
M8 9-10 H317	HIGH MAST LIGHT 317	2015
M8 9-10 H318	HIGH MAST LIGHT 318	2015
M8 9-10 H319	HIGH MAST LIGHT 319	2015
M8 9-10 H320	HIGH MAST LIGHT 320	2015
M8 9-9 H321	HIGH MAST LIGHT 321	2015
M8 9-9 H322	HIGH MAST LIGHT 322	2015
M8 9-9 H323	HIGH MAST LIGHT 323	2015
M8 9-9 H324	HIGH MAST LIGHT 324	2015
M8 9-9 H325	HIGH MAST LIGHT 325	2015
M80 1-2 G25	NO.05-020	2015
M80 1-2 G80	NO.05-030	2015
M8S 14-14 F10	BLOCHAIRN F/B 4	2015
M8S 14-14 F30	BLOCHAIRN F/B 5	2015
M8S 15-15 80	CASTLE STREET O/B	2015
M8S 15-15 G30	NO.13-990	2015

NEXT PRINCIPAL INSPECTION YEAR: 2015		
Structure Reference Number	STRUCTURE NAME	Next Principal Inspection Year
M8S 15-15 G40	NO.13-980	2015
M8S 17-17 30	GT WESTERN ON RAMP	2015
M8S 17-17 50	W GRAHAM ST OFF RAMP	2015
M8S 17-17 G10	NO.02-510	2015
M8S 22-22 10	RAMP F RENFREW 1	2015
M8S 29-29 30	ST JAMES VIADCT A EB	2015
M8S 29-29 40	ST JAMES VIADCT B WB	2015
M8S 8-8 20	M8 EB - M73 SB SLIP	2015
M8S 8-8 30	M73 NB - M8 WB SLIP	2015
M8S 8-8 W10	BAILLIESTON 1	2015
M8S 8-8 W20	BAILLIESTON 2	2015

NEXT PRINCIPAL INSPECTION YEAR: 2016		
Structure Reference Number	STRUCTURE NAME	Next Principal Inspection Year
A701 20 W0	JERICO 2	2016
A725 160	BLANTYRE RAIL	2016
A725 175	PARK BURN	2016
A725 200	BOGS BRAE RAIL	2016
A725 61 F	KINGSWAY F/B	2016
A725 97	CALDERGLEN	2016
A726 100	TELFORD ROAD U/P	2016
A726 60	MURRAY U/P EAST	2016
A726 70	MURRAY U/P NORTH	2016
A726 80	MURRAY U/P SOUTH	2016
A726 90	MURRAY U/P WEST	2016
A737 100	PUTYAN	2016
A737 110 W99	CARSEHEAD	2016
A737 130	BRACKENHILLS	2016
A737 145	ROEBANK CULVERT	2016
A737 155	AYR LINE RAIL	2016
A737 160 C50	SWINETREES BURN	2016
A737 170	BLACK CART WATER 3	2016
A737 180 F	MILLIKEN PARK RD F/B	2016
A737 190 F	KILBARCHAN ROAD F/B	2016
A737 70	SMITHSTONE RAIL	2016
A737 70 W87	MONKCASTLE 1	2016
A737 70 W88	MONKCASTLE 2	2016
A737 90	CAAF	2016
A737 90 W99	PUTYAN	2016
A75 20	BURNSIDE U/P	2016
A75 300	DALSCONE	2016
A75 320	NUNHOLM	2016
A75 330	LINCLUDEN	2016
A75 350	HARDTHORN ROAD O/B	2016
A75 360	TERREGLES ROAD O/B	2016
A75 370	ASH ROAD O/B	2016

NEXT PRINCIPAL INSPECTION YEAR: 2016		
Structure Reference Number	STRUCTURE NAME	Next Principal Inspection Year
A75 470	KELTON MILL	2016
A75 475	LODGE FARM O/B	2016
A75 490 C89	SLACK BURN	2016
A75 510	GLENTERRY FARM U/P	2016
A75 510 C77	WAULK MILL BURN 2	2016
A75 530	ENRICK FARM	2016
A75 530 C35	ENRICK BURN	2016
A75 550	ASS HOUSE STRAND	2016
A75 570	LAUNDRYWOOD	2016
A75 580	CALLY MAINS FARM	2016
A75 600 C65	KIRKDALE	2016
A75 660	PALNURE	2016
A76 140 C0	POLHOTE NEW	2016
A76 150 C0	POLMARLACH NEW	2016
A76 160	MARCHBURN	2016
A76 191	AFTON NEW	2016
A76 235	GLAISNOCK WATER	2016
A76 237	HORSECLEUGH U/P	2016
A76 239	HORSECLEUGH BURN	2016
A76 245	CAIRN ROAD O/B	2016
A76 245 C50	GLENGYRON BURN	2016
A76 245 C70	WEST SHANKSTON WOOD	2016
A76 245 C80	BANKEND BURN	2016
A76 261	SKARES ROAD	2016
A76 267 C45	AUCHINLECK BURN	2016
A76 275	PENNYLANDS BURN	2016
A76 282	BARONY ROAD	2016
A76 60	CAMPLE	2016
A76 70 W60	ENTERKINFOOT PH 6A	2016
A76 70 W80	ENTERKINFOOT PH 6B	2016
A76 70 W85	ENTERKIN SLIP PH 5A	2016
A76 80 W20	ENTERKIN SLIP PH 5B	2016
A76 80 W75	ENTERKIN SLIP PH 3A	2016
A76 80 W80	ENTERKIN SLIP PH 2	2016
A76 85 W5	ENTERKIN SLIP PH 4	2016
A77 100 W4	KILPHIN GABION WALL	2016
A77 110 C90	BENNANE BURN	2016
A77 116	BENNANE U/P	2016
A77 116 C5	BENNANE 1	2016
A77 160 W32	GIRVAN CEMETERY	2016
A77 170 W0	GIRVAN STATION SOUTH	2016
A77 200 C12	LITTLEHILL	2016
A77 200 C55	BURNSIDE NURSERY	2016
A77 280 C25	CARCLUIE	2016
A77 360 C12	BROCKET	2016
A77 365 F	HANSEL VILLAGE F/B	2016
A77 370	SPITTALHILL	2016
A77 400	BRIDGEHOUSE O/B	2016

NEXT PRINCIPAL INSPECTION YEAR: 2016		
Structure Reference Number	STRUCTURE NAME	Next Principal Inspection Year
A77 80 W15	ALTEHIT SOUTH GABION WALL	2016
A77 80 W89	DRUMBO GABION WALL	2016
A77 80 W93	HAGGSTONE SOUTH GABION WALL	2016
A77 87 W24	MUILLBANE GABION WALL	2016
A78 10 C5	CHRISSWELL	2016
A78 10 W1	AT IBM O/B	2016
A78 150	NORTH S ANNAN	2016
A78 170 C40	SOUTH ANNAN MAINS	2016
A78 190	FENCEFOOT	2016
A78 200 C26	KILRUSKIN	2016
A78 220	GOUROCK BURN	2016
A78 30	RIVER KIP BRIDGEND	2016
A78 40 W99	NEAR BRUEACRE BRIDGE	2016
A78 50 W36	OPPOSITE NORTH LODGE	2016
A78 70	KELLY	2016
A78 80	SKELMORLIE	2016
A78 9 C95	IBM CULVERT	2016
A78 9 C96	IBM LOOP ROAD	2016
A78 90	ST FILLANS	2016
A78S 50 C0	BRUEACRE BURN	2016
A8 120	FINLAYSTONE	2016
A8 180 W90	JAMES WATT DOCK EAST	2016
A8 195 W10	JAMES WATT DOCK WEST	2016
A8 195 W90	BULLRING SOUTH EAST	2016
A8 200 W49	CAR PARK EAST	2016
A8 200 W51	CAR PARK WEST	2016
A8 210 W10	BULLRING WEST	2016
A8 210 W15	BULLRING SOUTH WEST	2016
A82 100	MILTON	2016
A82 100 W39	UN-NAMED WALL	2016
A82 100 W49	UN-NAMED WALL	2016
A82 110	GRUGGIES BURN	2016
A82 50 H70	PLATFORM 70	2016
A82 50 H71	PLATFORM 71	2016
A82 50 H72	PLATFORM 72	2016
A82 50 H73	PLATFORM 73	2016
A82 60	A82 OVER A898 SR	2016
A82 60 H74	PLATFORM 74	2016
A82 60 H76	PLATFORM 75	2016
A82 60 H77	PLATFORM 77	2016
A82 60 H78	PLATFORM 78	2016
A82 80	BRAES ROAD	2016
A82 80 H79	PLATFORM 79	2016
A82 80 H80	PLATFORM 80	2016
A82 80 H81	PLATFORM 81	2016
A82 90	AUCHENTORLIE	2016
A82 90 W3	UN-NAMED WALL	2016
A898 80 H1	PLATFORM 1	2016

NEXT PRINCIPAL INSPECTION YEAR: 2016		
Structure Reference Number	STRUCTURE NAME	Next Principal Inspection Year
A898 80 H2	PLATFORM 2	2016
A898 80 H3	PLATFORM 3	2016
A898 80 H4	PLATFORM 4	2016
A898 80 H5	PLATFORM 5	2016
A898S 105 H66	PLATFORM 66	2016
A898S 105 H67	PLATFORM 67	2016
A898S 105 H68	PLATFORM 68	2016
A898S 105 H69	PLATFORM 69	2016
M73 1-2 55	NORTH CALDER WATER	2016
M73 1-2 70	ELLISMUIR FARM O/B	2016
M73 1-2 H1	PLATFORM	2016
M73 1-2 H10	PLATFORM	2016
M73 1-2 H11	PLATFORM	2016
M73 1-2 H2	PLATFORM	2016
M73 1-2 H3	PLATFORM/CRADLE	2016
M73 1-2 H4	PLATFORM	2016
M73 1-2 H5	PLATFORM	2016
M73 1-2 H6	PLATFORM	2016
M73 1-2 H7	PLATFORM	2016
M73 1-2 H8	PLATFORM	2016
M73 1-2 H9	PLATFORM	2016
M73S 1-1 H18	PLATFORM/CRADLE	2016
M73S 1-1 H19	PLATFORM/CRADLE	2016
M73S 1-1 H20	PLATFORM/CRADLE	2016
M73S 1-1 H26	PLATFORM/CRADLE	2016
M73S 1-1 H29	PLATFORM/CRADLE	2016
M73S 1-1 H31	PLATFORM/CRADLE	2016
M73S 1-1 H33	PLATFORM/CRADLE	2016
M73S 1-1 H36	PLATFORM/CRADLE	2016
M73S 1-1 H41	PLATFORM/CRADLE	2016
M74 4-3 H1	PLATFORM/CRADLE	2016
M74 4-4 H18	PLATFORM/CRADLE	2016
M74 4-4 H2	PLATFORM/CRADLE	2016
M74 4-4 H21	PLATFORM/CRADLE	2016
M74 4-4 H22	PLATFORM/CRADLE	2016
M74 5-4 60	UDDINGSTON JUNC RAIL	2016
M74 5-4 H23	PLATFORM/CRADLE	2016
M74 5-4 H24	PLATFORM/CRADLE	2016
M74 5-4 H25	PLATFORM/CRADLE	2016
M74 5-4 H26	PLATFORM/CRADLE	2016
M74 5-4 W80	POWBURN GABION WALL	2016
M74 6-6 10	M74 OVER A723	2016
M74 6-6 H32	PLATFORM	2016
M74 6-6 H33	PLATFORM	2016
M74 6-6 H37	PLATFORM	2016
M74 6-6 H38	PLATFORM	2016
M74 6-6 H39	PLATFORM	2016
M74 6-6 H45	PLATFORM	2016

NEXT PRINCIPAL INSPECTION YEAR: 2016		
Structure Reference Number	STRUCTURE NAME	Next Principal Inspection Year
M74 6-6 H46	PLATFORM	2016
M74 8-8 10	SWINHILL	2016
M74 9-8 85	CANDERMILL MARLAGE	2016
M74S 4-4 H17	PLATFORM/CRADLE	2016
M74S 4-4 H7	PLATFORM/CRADLE	2016
M74S 6-6 F100	NE M74 SLIP F/B	2016
M74S 6-6 F70	NW M74 SLIP F/B	2016
M74S 6-6 F80	SW M74 SLIP F/B	2016
M74S 6-6 F90	SE M74 SLIP F/B	2016
M74S 6-6 H25	PLATFORM	2016
M74S 6-6 H26	PLATFORM	2016
M74S 6-6 H27	PLATFORM	2016
M74S 6-6 H28	PLATFORM	2016
M74S 6-6 H29	PLATFORM	2016
M77 2-1 W10	RETAINING WALL 3	2016
M77 2-1 W45	RETAINING WALL 2	2016
M77 2-1 W50	RETAINING WALL 1	2016
M77 3-2 71	SOUTH POLLOCK ROAD	2016
M77 3-2 W30	RETAINING WALL 4	2016
M8 10-11 G10	NO.04-870	2016
M8 10-11 G50	NO.04-880	2016
M8 13-14 G80	NO.04-030	2016
M8 14-15 G15	NO.04-010	2016
M8 14-15 G40	NO.04-970	2016
M8 14-15 G5	NO.04-020	2016
M8 14-15 G50	NO.04-000	2016
M8 14-15 G70	NO.04-980	2016
M8 15-15 10	BAIRD STREET O/B	2016
M8 15-15 60	TOWNHEAD RAMP J EAST	2016
M8 15-15 G30	NO.04-990	2016
M8 15-15 W12	TOWNHEAD RAMP L W011	2016
M8 15-15 W13	TOWNHEAD RAMP L EAST	2016
M8 15-15 W2	TOWNHEAD 3 W006	2016
M8 15-15 W28	CASTLE STREET W017	2016
M8 15-15 W4	TOWNHEAD 3 W005	2016
M8 15-15 W40	TOWNHEAD 1 W021	2016
M8 15-15 W42	TOWNHEAD 3 W022	2016
M8 15-15 W6	TOWNHEAD 8 W008	2016
M8 15-16 W75	TOWNHEAD 4 W024	2016
M8 15-16 W80	TOWNHEAD 11 W025	2016
M8 16-16 10	CRAIGHALL I/C WB 8B	2016
M8 16-16 20	CRAIGHALL I/C EB 8A	2016
M8 16-16 W10	W026 R/W 4E WOODSIDE	2016
M8 16-16 W20	W027 R/W 11E WOODSIDE	2016
M8 16-17 30	MARYHILL SPUR FO 9	2016
M8 16-17 W10	W030 R/W 16 WOODSIDE	2016
M8 16-17 W15	W029 R/W 15 WOODSIDE	2016
M8 16-17 W20	W031 R/W 18 WOODSIDE	2016

NEXT PRINCIPAL INSPECTION YEAR: 2016		
Structure Reference Number	STRUCTURE NAME	Next Principal Inspection Year
M8 16-17 W5	W028 R/W 13 WOODSIDE	2016
M8 17-17 W10	W034 R/W 19 WOODSIDE	2016
M8 17-17 W45	W041 RAMP J R/W'S	2016
M8 17-17 W5	W033 R/W 20 WOODSIDE	2016
M8 17-17 W52	CENTRAL EAST TO Z	2016
M8 18-18 F30	CHARING CROSS F/B	2016
M8 18-18 W15	BATH ST WEST W050	2016
M8 18-18 W17	BATH STREET NW	2016
M8 18-18 W25	CHARING X WEST W052	2016
M8 18-18 W5	CHARING X WEST W048	2016
M8 18-19 20	CHARING X STATION	2016
M8 18-19 G50	NO.02-040	2016
M8 18-19 W45	CHARING X WEST W054	2016
M8 18-19 W75	ARGYLE ST WEST W056	2016
M8 18-19 W77	ST VINCENT-ARGYLE NW	2016
M8 19-19 W10	W059A WATERLOO ST	2016
M8 19-19 W12	WATERLOO SOUTH	2016
M8 19-19 W15	KINGSTON W059B	2016
M8 19-19 W20	KINGSTON S/B W059C	2016
M8 19-19 W35	KINGSTON NB W060A	2016
M8 19-19 W40	KINGSTON S/B W060B	2016
M8 19-19 W45	NORTH ST W061A	2016
M8 19-19 W50	NORTH ST EAST W061B	2016
M8 20-20 W30	WEST ST OFF NORTH	2016
M8 20-20 W40	WEST ST OFF SOUTH	2016
M8 20-21 H107	PLATFORM	2016
M8 20-21 H108	PLATFORM	2016
M8 21-21 H101	PLATFORM	2016
M8 21-21 H105	PLATFORM	2016
M8 21-21 H106	PLATFORM	2016
M8 21-21 H98	PLATFORM	2016
M8 21-21 H99	PLATFORM	2016
M8 21-21 W10	W065 SCOTLAND ST 2	2016
M8 21-21 W20	W075 SCOTLAND ST 12	2016
M8 21-21 W25	W066 SCOTLAND ST 3	2016
M8 21-21 W30	W067 SCOTLAND ST 4	2016
M8 21-21 W35	W068 SCOTLAND ST 5	2016
M8 21-21 W40	W069 SCOTLAND ST 6	2016
M8 21-21 W45	W070 SCOTLAND ST 7	2016
M8 21-21 W5	W064 SCOTLAND ST 1	2016
M8 21-22 F50	CORNWALL STREET F/B	2016
M8 21-22 H92	PLATFORM	2016
M8 21-22 H93	PLATFORM	2016
M8 21-22 H94	PLATFORM	2016
M8 21-22 H95	PLATFORM	2016
M8 21-22 H96	PLATFORM	2016
M8 21-22 H97	PLATFORM	2016
M8 21-22 W50	W077 MACLELLAND ST	2016

NEXT PRINCIPAL INSPECTION YEAR: 2016		
Structure Reference Number	STRUCTURE NAME	Next Principal Inspection Year
M8 22-22 F40	KIRKWOOD STREET F/B	2016
M8 22-22 F90	PERCY STREET F/B	2016
M8 22-22 H73	PLATFORM	2016
M8 22-22 H74	PLATFORM	2016
M8 22-22 H77	PLATFORM	2016
M8 22-22 H80	PLATFORM	2016
M8 22-22 H84	PLATFORM	2016
M8 22-22 H87	PLATFORM	2016
M8 22-22 H88	PLATFORM	2016
M8 22-22 H90	PLATFORM	2016
M8 22-22 W10	W079 RAMP A S RENFRW	2016
M8 22-22 W20	W080 RAMP A NORTH	2016
M8 22-22 W40	W082 RAMP C NORTH	2016
M8 22-22 W50	W083 RAMP C SOUTH	2016
M8 22-23 H68	PLATFORM	2016
M8 22-23 H69	PLATFORM	2016
M8 22-23 H71	PLATFORM	2016
M8 22-23 H72	PLATFORM	2016
M8 23-23 20	PAISLEY RD W NTH O/B	2016
M8 23-23 21	PAISLEY RD W STH O/B	2016
M8 23-23 H61	PLATFORM	2016
M8 23-23 H62	PLATFORM	2016
M8 23-23 H63	PLATFORM	2016
M8 23-24 G70	NO.01-960	2016
M8 23-24 H60	PLATFORM	2016
M8 24-24 H55	PLATFORM	2016
M8 24-24 H56	PLATFORM	2016
M8 24-24 H57	PLATFORM	2016
M8 24-25 G40	NO.01-950	2016
M8 24-25 G80	NO.01-940	2016
M8 24-25 H36	PLATFORM	2016
M8 24-25 H39	PLATFORM	2016
M8 24-25 H40	PLATFORM	2016
M8 24-25 H41	PLATFORM	2016
M8 24-25 H42	PLATFORM	2016
M8 24-25 H43	PLATFORM	2016
M8 24-25 H44	PLATFORM	2016
M8 24-25 H45	PLATFORM	2016
M8 24-25 H46	PLATFORM	2016
M8 24-25 H47	PLATFORM	2016
M8 24-25 H48	PLATFORM	2016
M8 24-25 H49	PLATFORM	2016
M8 24-25 H50	PLATFORM	2016
M8 24-25 H51	PLATFORM	2016
M8 24-25 H52	PLATFORM	2016
M8 24-25 H53	PLATFORM	2016
M8 24-25 H54	PLATFORM	2016
M8 24-25 W95	W092 RAMP J	2016

NEXT PRINCIPAL INSPECTION YEAR: 2016		
Structure Reference Number	STRUCTURE NAME	Next Principal Inspection Year
M8 25-25 H23	PLATFORM	2016
M8 25-25 H25	PLATFORM	2016
M8 25-25 H28	PLATFORM	2016
M8 25-25 H34	PLATFORM	2016
M8 25-25 H37	PLATFORM	2016
M8 25-25 W10	W093 BERRYKNOWES NTH	2016
M8 25-25 W20	W094 BERRYKNOWES STH	2016
M8 25-25 W30	W095 BERRYKNOWES RD	2016
M8 25-26 G10	NO.01-920	2016
M8 25-26 G30	NO.01-100	2016
M8 25-26 G45	NO.01-910	2016
M8 25-26 G5	NO.01-930	2016
M8 25-26 G50	NO.01-110	2016
M8 25-26 G80	NO.01-120	2016
M8 25-26 G90	NO.01-130	2016
M8 25-26 H10	UNNAMED	2016
M8 25-26 H11	UNNAMED	2016
M8 25-26 H12	UNNAMED	2016
M8 25-26 H15	UNNAMED	2016
M8 25-26 H16	UNNAMED	2016
M8 25-26 H17	UNNAMED	2016
M8 25-26 H18	UNNAMED	2016
M8 25-26 H19	UNNAMED	2016
M8 25-26 H20	UNNAMED	2016
M8 25-26 H21	UNNAMED	2016
M8 25-26 H22	UNNAMED	2016
M8 25-26 H6	UNNAMED	2016
M8 25-26 H7	UNNAMED	2016
M8 25-26 H8	UNNAMED	2016
M8 25-26 H9	UNNAMED	2016
M8 26-27 75	ARKLESTON ROAD O/B	2016
M8 26-27 F40	HILLINGTON F/B	2016
M8 26-27 G10	NO. 01-900 E/B	2016
M8 26-27 G35	NO. 01-140 W/B	2016
M8 26-27 G40	NO. 01-890 E/B	2016
M8 26-27 G60	NO. 01-150 W/B	2016
M8 26-27 G95	NO. 01-160 W/B	2016
M8 27-27 10	RENFREW RD/PAISLEY	2016
M8 27-28 G15	NO. 01-170 W/B	2016
M8 27-28 G95	NO. 01-180 W/B	2016
M8 28-28 10	GLASGOW AIRPORT SLIP	2016
M8 28-29 W40	ROUTE A PILED	2016
M8 28-29 W45	ROUTE A CANTILEVER	2016
M8 28-29 W50	ROUTE B PILED	2016
M8 29-30 80	A8 BISHOPTON O/B	2016
M8 30-30 20	M8 OVER M8 SLIP	2016
M8 30-31 15	DRUMCROSS O/B	2016
M8 30-31 35	RITCHIESTON O/B	2016

NEXT PRINCIPAL INSPECTION YEAR: 2016		
Structure Reference Number	STRUCTURE NAME	Next Principal Inspection Year
M8 31-31 10	WEST FERRY I/C EAST	2016
M8 31-31 20	WEST FERRY I/C WEST	2016
M8 8-9 G40	NO.04-190	2016
M8 8-9 G90	NO.04-830	2016
M8 8-9 G95	NO.04-180	2016
M8 9-10 G60	NO.04-850	2016
M8 9-10 G65	NO.04-150	2016
M80 1-2 15	ROYSTON ROAD O/B	2016
M80 1-2 50	ROBROYSTON ROAD O/B	2016
M80 1-2 F40	ROBROYSTON SRVCE F/B	2016
M80 1-2 G10	NO.05-990	2016
M80 1-2 G15	NO.05-010	2016
M80 1-2 G40	NO.05-980	2016
M80 1-2 G60	NO.05-970	2016
M80 1-2 H385	PLATFORM	2016
M80 1-2 H386	PLATFORM	2016
M80 1-2 H387	PLATFORM	2016
M80 1-2 H388	PLATFORM	2016
M80 1-2 H389	PLATFORM	2016
M80 2-2 10	ROBROYSTON I/C	2016
M898 1-1 G10	16-010	2016
M8S 13-13 10	PROVAN M80-M8WB SLIP	2016
M8S 13-13 20	PROVAN M8EB-M80 SLIP	2016
M8S 15-15 120	TOWNHEAD RAMP C SLIP	2016
M8S 15-15 130	TOWNHEAD RAMP A SLIP	2016
M8S 15-15 70	TOWNHEAD RAMP R SLIP	2016
M8S 15-15 90	CASTLE ST N SLIP O/B	2016
M8S 17-17 20	GT. WESTERN OFF RAMP	2016
M8S 17-17 60	ST GEORGES ROAD	2016
M8S 21-21 H100	PLATFORM	2016
M8S 21-21 H102	PLATFORM	2016
M8S 22-22 20	RAMP C RENFREW 1 O/B	2016
M8S 22-22 H75	PLATFORM	2016
M8S 22-22 H76	PLATFORM	2016
M8S 22-22 H78	PLATFORM	2016
M8S 22-22 H79	PLATFORM	2016
M8S 22-22 H81	PLATFORM	2016
M8S 22-22 H82	PLATFORM	2016
M8S 22-22 H83	PLATFORM	2016
M8S 22-22 H85	PLATFORM	2016
M8S 22-22 H86	PLATFORM	2016
M8S 22-22 H89	PLATFORM	2016
M8S 22-22 H91	PLATFORM	2016
M8S 25-25 10	BERRYKNOWES SLIP	2016
M8S 25-25 H24	PLATFORM	2016
M8S 25-25 H26	PLATFORM	2016
M8S 25-25 H27	PLATFORM	2016
M8S 25-25 H29	PLATFORM	2016

NEXT PRINCIPAL INSPECTION YEAR: 2016		
Structure Reference Number	STRUCTURE NAME	Next Principal Inspection Year
M8S 25-25 H30	PLATFORM	2016
M8S 25-25 H32	PLATFORM	2016
M8S 25-25 H33	PLATFORM	2016
M8S 25-25 H35	PLATFORM	2016
M8S 30-30 10	M898 WB - M8 NB SLIP	2016

NEXT PRINCIPAL INSPECTION YEAR: 2017		
Structure Reference Number	STRUCTURE NAME	Next Principal Inspection Year
A701 0 W90	JERICO 1	2017
A701 60 C40	CLATTERSTANES BURN	2017
A701 70	BURRANCE	2017
A701 90 C50	MOSSLANDS	2017
A726 10	BIRNIEHILL U/P EAST	2017
A726 170	COLLEGE MILTON RAIL	2017
A726 20	BIRNIEHILL U/P SOUTH	2017
A726 30	BIRNIEHILL U/P NORTH	2017
A726 40	BIRNIEHILL U/P WEST	2017
A737 145 C80	RISK	2017
A737 150	ELLISTON BURN	2017
A737 270 G50	15960	2017
A737 270 G80	15970	2017
A737 280 G50	15980	2017
A737 290	LINCLIVE I/C 2	2017
A75 190	CLEUCHBRAE	2017
A75 200 C65	RIGGHEAD U/P	2017
A75 200 C70	TOWNHEAD U/P	2017
A75 230	AULDTREE	2017
A75 380	CARGEN WATER	2017
A75 400	SPRINGHOLM	2017
A75 420	HILLOWTOWN U/P	2017
A75 425	DUNMUIR ROAD	2017
A75 430	ABERCROMBY ROAD	2017
A75 440	BLACKPARK U/P	2017
A75 450	CARLINGWARK LANE	2017
A75 460	BARLEYHILL O/B	2017
A76 20 C60	BURNSIDE	2017
A76 40	BLACKWOOD NEW	2017
A76 50	BERSCAR	2017
A76 80 W50	ENTERKIN SLIP PH 3B	2017
A78 100	NODSDALE	2017
A78 110	GOGO	2017
A78 120	KELBURN	2017
A78 140	BURNFOOT	2017
A78 210	SEAMILL	2017
A78 260	DUBBS FARM CC	2017
A78 4 C25	NEWTON STREET	2017

NEXT PRINCIPAL INSPECTION YEAR: 2017		
Structure Reference Number	STRUCTURE NAME	Next Principal Inspection Year
A78 41 F	INVERKIP MARINA F/B	2017
A78 8 W80	AT BARRS COTTAGE	2017
A78S 340	EGLINTON I/C N O/B	2017
A78S 350	EGLINTON I/C S O/B	2017
A898S 140 H3V	CAM 3	2017
A8S 105	M8 R/BOU SE LEG	2017
M73 1-1 G10	GANTRY REF 06002	2017
M73 1-1 G5	GANTRY REF 06992	2017
M73 1-2 G45	GANTRY REF. 06980	2017
M73 2-2 10	M73 OVER RAIL	2017
M73 2-2 20	M73 OVER M8 R/BOU	2017
M73 2-2 30	M73 OVER M8	2017
M73 2-3 12	MONKLAND CANAL U/P	2017
M74 4-3 G60	14090	2017
M74 4-3 G90	NO. 14920	2017
M74 6-5 G50	NO. 14095	2017
M74 6-6 H18	PLATFORM	2017
M74 6-6 H19	PLATFORM	2017
M74 6-6 H40	PLATFORM	2017
M74 6-6 H41	PLATFORM	2017
M74 6-6 H42	PLATFORM	2017
M74 6-6 H43	PLATFORM	2017
M74 6-6 H44	PLATFORM	2017
M74 7-6 25	BOG O/B	2017
M74 7-6 80	ROSS HOUSE O/B	2017
M74 7-7 10	A72 O/B	2017
M74 8-7 50	BURNHEAD ROAD O/B	2017
M74 8-7 85	SEWAGE WORKS ACCESS	2017
M74 8-7 F30	SHAWS F/B	2017
M74 9-8 65	LOCHHEAD O/B	2017
M74S 6-6 H20	PLATFORM	2017
M74S 6-6 H21	PLATFORM	2017
M74S 6-6 H22	PLATFORM	2017
M74S 6-6 H23	PLATFORM	2017
M74S 6-6 H24	PLATFORM	2017
M74S 6-6 H34	PLATFORM	2017
M74S 6-6 H35	PLATFORM	2017
M74S 6-6 H36	PLATFORM	2017
M74S 6-6 H47	PLATFORM	2017
M74S 6-6 H48	PLATFORM	2017
M74S 6-6 H49	PLATFORM	2017
M74S 6-6 H50	PLATFORM	2017
M74S 6-6 H51	PLATFORM	2017
M74S 9-9 20	VERE RD N SLIP O/B	2017
M77 1-0 50	BELLAHOUSTON RAIL	2017
M77 1-0 W40	W100 MAXWELL DRIVE	2017
M77 1-0 W80	W084 RAMP F EAST	2017
M77 4-3 G25	N0.10-07860	2017

NEXT PRINCIPAL INSPECTION YEAR: 2017		
Structure Reference Number	STRUCTURE NAME	Next Principal Inspection Year
M8 10-11 G55	NO.04-130	2017
M8 11-11 G30	NO.04-120	2017
M8 12-13 F50	GALA STREET F/B	2017
M8 12-13 G10	NO.04-070	2017
M8 12-13 G55	NO.04-060	2017
M8 12-13 G95	NO.04-050	2017
M8 13-13 H378	HIGH MAST LIGHT	2017
M8 13-13 H383	HIGH MAST LIGHT	2017
M8 13-13 H384	HIGH MAST LIGHT	2017
M8 13-13 H390	HIGH MAST LIGHT	2017
M8 13-14 G20	NO.04-040	2017
M8 14-15 W5	BLOCHAIRN 9 W005	2017
M8 15-15 20	TOWNHEAD RAMP K WEST	2017
M8 15-15 H192	HIGH MAST LIGHT 192	2017
M8 15-15 H193	HIGH MAST LIGHT 193	2017
M8 15-15 H194	HIGH MAST LIGHT 194	2017
M8 15-15 H195	HIGH MAST LIGHT 195	2017
M8 15-15 H196	HIGH MAST LIGHT 196	2017
M8 15-15 H197	HIGH MAST LIGHT 197	2017
M8 15-15 H198	HIGH MAST LIGHT 198	2017
M8 15-15 H200	HIGH MAST LIGHT 200	2017
M8 15-15 H201	HIGH MAST LIGHT 201	2017
M8 15-15 H204	HIGH MAST LIGHT 204	2017
M8 15-15 H206	HIGH MAST LIGHT 206	2017
M8 15-15 H207	HIGH MAST LIGHT 207	2017
M8 15-15 H209	HIGH MAST LIGHT 209	2017
M8 15-15 H210	HIGH MAST LIGHT 210	2017
M8 15-16 H185	HIGH MAST LIGHT	2017
M8 15-16 H186	HIGH MAST LIGHT	2017
M8 15-16 H187	HIGH MAST LIGHT	2017
M8 15-16 H188	HIGH MAST LIGHT	2017
M8 15-16 H189	HIGH MAST LIGHT	2017
M8 15-16 H190	HIGH MAST LIGHT	2017
M8 15-16 H191	HIGH MAST LIGHT	2017
M8 16-16 H178	HI MAST	2017
M8 16-17 H163	HIMAST	2017
M8 16-17 H164	HI MAST	2017
M8 16-17 H165	HIMAST	2017
M8 16-17 H166	HI MAST	2017
M8 16-17 H167	HI MAST	2017
M8 16-17 H168	HIMAST	2017
M8 16-17 H169A	HI MAST	2017
M8 16-17 H169B	HI MAST	2017
M8 16-17 H170	HI MAST	2017
M8 16-17 H172	HIGH MAST LIGHT	2017
M8 16-17 H173	HI MAST	2017
M8 16-17 H177	HIGH MAST LIGHT	2017
M8 16-17 H179	HIGH MAST LIGHT	2017

NEXT PRINCIPAL INSPECTION YEAR: 2017		
Structure Reference Number	STRUCTURE NAME	Next Principal Inspection Year
M8 17-17 H148	HIGH MAST LIGHT	2017
M8 17-17 H160	HIGH MAST LIGHT	2017
M8 17-17 H161	HIGH MAST LIGHT	2017
M8 17-17 W30	W038 R/W 21 WOODSIDE	2017
M8 17-17 W35	W039 R/W 22 WOODSIDE	2017
M8 17-18 H146	HIGH MAST LIGHT	2017
M8 17-18 H147	HIGH MAST LIGHT	2017
M8 17-18 W50	W045 W RAMPS A & L	2017
M8 18-18 H143	HIGH MAST LIGHT	2017
M8 18-18 H144	HIGH MAST LIGHT	2017
M8 18-18 H145	HIGH MAST LIGHT	2017
M8 18-19 H135	HIGH MAST LIGHT	2017
M8 18-19 H136	HIGH MAST LIGHT	2017
M8 18-19 H137	HIGH MAST LIGHT	2017
M8 18-19 H138	HIGH MAST LIGHT	2017
M8 18-19 H139	HIGH MAST LIGHT	2017
M8 18-19 H140	HIGH MAST LIGHT	2017
M8 18-19 H141	HIGH MAST LIGHT	2017
M8 18-19 H142	HIGH MAST LIGHT	2017
M8 19-19 H123	HIGH MAST LIGHT	2017
M8 19-19 H125	HIGH MAST LIGHT	2017
M8 20-20 H109	HIGH MAST LIGHT	2017
M8 20-20 H110	HIGH MAST LIGHT	2017
M8 20-20 H114	HI MAST LIGHT	2017
M8 21-22 G5	NO.01-990	2017
M8 22-22 W30	W081 CLIFFORD STREET	2017
M8 22-23 G10	NO.01-980	2017
M8 22-23 G20	NO.01-040	2017
M8 22-23 G55	NO.01-970	2017
M8 22-23 G60	NO.01-050	2017
M8 22-23 G90	NO.01-060	2017
M8 23-24 G90	NO.01-070	2017
M8 24-24 W10	W087 HELEN ST NORTH	2017
M8 24-24 W20	W088 HELEN ST SOUTH	2017
M8 24-24 W30	W089 HELEN ST RAMP N	2017
M8 24-24 W40	W090 HELEN ST RAMP S	2017
M8 24-25 30	CRAIGTON RAIL TUNNEL	2017
M8 24-25 31	CRAIGTON ROAD U/P	2017
M8 24-25 G70	NO.01-080	2017
M8 24-25 G90	NO.01-090	2017
M8 25-26 40	WOYKA VIADUCT	2017
M8 25-26 55	KGV DOCK ACCESS (A.K.A. SHIELDHALL)	2017
M8 26-26 10	HILLINGTON RAIL	2017
M8 26-26 30	HILLINGTON I/C E	2017
M8 26-26 40	HILLINGTON I/C W	2017
M8 26-27 G65	NO. 01-880 E/B	2017
M8 28-28 G10	NO.01-190	2017
M8 28-28 G20	NO.01-840	2017

NEXT PRINCIPAL INSPECTION YEAR: 2017		
Structure Reference Number	STRUCTURE NAME	Next Principal Inspection Year
M8 29-29 G10	NO.15-990	2017
M8 29-30 G10	NO.01-820	2017
M8 29-30 G5	NO.01-830	2017
M8 8-8 G1	VMS/T	2017
M8 8-9 20	MAINHILL ROAD RAIL	2017
M8 9-10 F75	HALLIBURTON CRES F/B	2017
M80S 1-1 H391	HIGH MAST LIGHT	2017
M80S 1-1 H392	HIGH MAST LIGHT	2017
M80S 1-1 H393	HIGH MAST LIGHT	2017
M80S 1-1 H394	HIGH MAST LIGHT	2017
M80S 1-1 H395	HIGH MAST LIGHT	2017
M80S 1-1 H396	HIGH MAST LIGHT	2017
M80S 1-1 H397	HIGH MAST LIGHT	2017
M8S 13-13 H379	HIGH MAST LIGHT	2017
M8S 13-13 H380	HIGH MAST LIGHT	2017
M8S 13-13 H381	HIGH MAST LIGHT	2017
M8S 13-13 H382	HIGH MAST LIGHT	2017
M8S 15-15 110	TOWNHEAD LOOP U SLIP	2017
M8S 15-15 H199	HIGH MAST LIGHT	2017
M8S 15-15 H203	HIGH MAST LIGHT	2017
M8S 15-15 H205	HIGH MAST LIGHT	2017
M8S 15-15 H208	HIGH MAST LIGHT	2017
M8S 15-15 H350	HIGH MAST LIGHT	2017
M8S 15-15 H352	HIGH MAST LIGHT	2017
M8S 15-15 H353	HIGH MAST LIGHT	2017
M8S 15-15 H354	HIGH MAST LIGHT	2017
M8S 15-15 H356	HIGH MAST LIGHT	2017
M8S 15-15 H357	HIGH MAST LIGHT	2017
M8S 15-15 H358	HIGH MAST LIGHT	2017
M8S 15-15 H359	HIGH MAST LIGHT	2017
M8S 15-15 H360	HIGH MAST LIGHT	2017
M8S 15-15 H361	HIGH MAST LIGHT	2017
M8S 15-16 H184	HIGH MAST LIGHT	2017
M8S 16-16 H180	HIMAST	2017
M8S 16-16 H181	HIMAST	2017
M8S 16-16 H182	HIMAST	2017
M8S 16-16 H183	HIMAST	2017
M8S 16-17 H174	HIMAST	2017
M8S 16-17 H175	HI MAST	2017
M8S 16-17 H176	HIGH MAST LIGHT	2017
M8S 17-17 H149	HIGH MAST LIGHT	2017
M8S 17-17 H150	HIGH MAST LIGHT	2017
M8S 17-17 H151	HIGH MAST LIGHT	2017
M8S 17-17 H152	HIGH MAST LIGHT	2017
M8S 17-17 H153	HIGH MAST LIGHT	2017
M8S 17-17 H154	HIGH MAST LIGHT	2017
M8S 17-17 H155	HIGH MAST LIGHT	2017
M8S 17-17 H156	HIGH MAST LIGHT	2017

NEXT PRINCIPAL INSPECTION YEAR: 2017		
Structure Reference Number	STRUCTURE NAME	Next Principal Inspection Year
M8S 17-17 H157	HIGH MAST LIGHT	2017
M8S 17-17 H158	HIGH MAST LIGHT	2017
M8S 17-17 H159	HIGH MAST LIGHT	2017
M8S 17-17 H162	HIGH MAST LIGHT	2017
M8S 17-18 W52	N/W TO RAMPS A&L	2017
M8S 19-19 H120	HIGH MAST LIGHT	2017
M8S 19-19 H122	HIGH MAST LIGHT	2017
M8S 19-19 H124	HIGH MAST LIGHT	2017
M8S 19-19 H129	HIGH MAST LIGHT	2017
M8S 19-19 H130	HIGH MAST LIGHT	2017
M8S 19-19 H131	HIGH MAST LIGHT	2017
M8S 19-19 H132	HIGH MAST LIGHT	2017
M8S 19-19 H133	HIGH MAST LIGHT	2017
M8S 19-19 H134	HIGH MAST LIGHT	2017
M8S 20-20 H111	UNNAMED	2017
M8S 20-20 H112	HI MAST	2017
M8S 20-20 H113	HIMAST LIGHT	2017
M8S 20-20 H116	HIMAST LIGHT	2017
M8S 20-20 H118	HI MAST LIGHT	2017
M8S 21-22 G10	NO.07-990	2017
M8S 21-22 G15	NO.07-020	2017
M8S 21-22 G75	NO.07-030	2017
M8S 21-22 G90	NO.07-980	2017
M8S 26-26 10	A8 RENFREW RD O/B (BRAEHEAD PARK DEVELOPMENT)	2017
M8S 26-26 20	HILLINGTON I/C SLIP	2017
M8S 26-26 W10	RETAINING WALL A""	2017
M8S 26-26 W20	RETAINING WALL B1""	2017
M8S 26-26 W30	RETAINING WALL B2""	2017
M8S 8-8 100	M8 EB - M73 SB SLIP	2017

Principal Inspections Due Between 2012 and 2017

Structure Type	Total No	PI 2012	PI 2013	PI 2014	PI 2015	PI 2016	PI 2017
Structures with particular Requirements *	15		10	1	1		
Bridges	528	46	59	148	126	95	54
Footbridges	47	7	3	10	9	14	4
Culverts	85	5	13	23	14	23	7
Retaining Walls	264	20	12	48	72	94	18
Gantries	177	29	23	33	19	37	36
High Mast Lights	565	122	46	17	82	158	140

* See notes 4 and 5

Notes:

1. For supplementary information on bridges with particular requirements, refer to Schedule 7 Part 7.
2. Further information on the Structures listed within this table is held within the structures management function of the Integrated Roads Information System and the information room.
3. The numbers of Structures may be altered during the course of this Contract at the Director's discretion.
4. All Structures with particular requirements lie within the Principal Inspection programme, except where specifically excluded by their own maintenance manual as noted in Schedule 7 Part 7.
5. Not all Structures with particular requirements have Principal Inspections due between 2012 and 2017.

This is Annex 7.6/C to Schedule 7 Part 6 referred to in the foregoing Agreement between Scottish Ministers and Scotland TranServ being a Joint Venture comprising of Balfour Beatty Civil Engineering Limited and Mouchel Limited.

SCOTTISH MINISTERS' REQUIREMENTS

SCHEDULE 7 PART 6

MANAGEMENT AND MAINTENANCE OF STRUCTURES

ANNEX 7.6/C – List of Structures Over or Carrying Watercourses which have been subject to a Stage 1 Scour Assessment

SCOTTISH MINISTERS' REQUIREMENTS

SCHEDULE 7 PART 6

MANAGEMENT AND MAINTENANCE OF STRUCTURES

ANNEX 7.6/C – List of Structures Over or Carrying Watercourses which have been subject to a Stage 1 Scour Assessment

Structure Ref No.	Structure Name
A701 61	AE
A725 190	NEW BOTHWELL O/B
A725 255	ROSEHALL
A726 50	KITTOCH U/B
A737 260	BLACK CART WATER 1
A737 265	OLD PATRICK WATER
A75 160	ANNAN
A75 30	KIRTLE WATER
A75 300	DALSCONE
A75 320	NUNHOLM
A75 330	LINCLUDEN
A75 380	CARGEN WATER
A75 400	SPRINGHOLM
A75 410	NEW RAMHILL
A75 660	PALNURE
A75 670	CREE
A76 30	AULDGIRTH
A76 340	BRIGHOUSE B'GOWER
A76 60	CAMPLE
A76 70	CARRON
A76 80	ENTERKIN
A77 110	BALLANTRAE
A77 180	BRIDGEMILL RIVER
A77 20	BISHOPBURN
A77 260	SMITHSTON
A77 270	MINISHANT
A77 300	OVERMILLS
A77 40	BEOCH
A77 420	RIVER IRVINE NW SL
A77 430	RIVER IRVINE (KBP)
A77 440	RIVER IRVINE NE SL
A77 490	CRAUFURDLAND WATER
A77 70	BURNFOOT NEW
A77 80	GALLOWAY
A77 85	HAGGSTONE
A78 150	N'TH S ANNAN
A78 470	RIVER IRVINE (IBP)
M74 11-10 90	NETHAN VIADUCT
M74 11-10 W91	NETHAN GABION WALL
M74 6-5 75	RAITH

Structure Ref No.	Structure Name
M74 7-6 90	AVON
M77 2-1 30	WHITE CART
M8 29-30 25	BLACK CART
M8 29-30 45	GRYFE

This is Annex 7.6/D to Schedule 7 Part 6 referred to in the foregoing Agreement between Scottish Ministers and Scotland TranServ being a Joint Venture comprising of Balfour Beatty Civil Engineering Limited and Mouchel Limited.

SCOTTISH MINISTERS' REQUIREMENTS

SCHEDULE 7 PART 6

MANAGEMENT AND MAINTENANCE OF STRUCTURES

ANNEX 7.6/D – List of Structures Over or Carrying Watercourses which have been subject to a Stage 2 Scour Assessment

SCOTTISH MINISTERS' REQUIREMENTS

SCHEDULE 7 PART 6

MANAGEMENT AND MAINTENANCE OF STRUCTURES

ANNEX 7.6/D – List of Structures Over or Carrying Watercourses which have been subject to a Stage 2 Scour Assessment

Structure Ref No.	Structure Name
A75 480	THREAVE
A75 630	NEW MONEYPOL
A75 690	BARLAE
A75 700	DERVAIRD
A76 40	BLACKWOOD
A76 100	WHITEHILL
A76 120	GUILDHALL
A76 130	POLNEUL
A76 200	NITH
A77 150	MYOCH
A78 220	GOUROCK BURN
A82 150	LEVEN
A701 60	AE

This is Annex 7.6/E to Schedule 7 Part 6 referred to in the foregoing Agreement between Scottish Ministers and Scotland TranServ being a Joint Venture comprising of Balfour Beatty Civil Engineering Limited and Mouchel Limited.

SCOTTISH MINISTERS' REQUIREMENTS

SCHEDULE 7 PART 6

MANAGEMENT AND MAINTENANCE OF STRUCTURES

ANNEX 7.6/E – List of Structures subject to Assessment and Upgrading of Vehicle Parapets to Transport Scotland Interim Advice Note 25

SCOTTISH MINISTERS' REQUIREMENTS

SCHEDULE 7 PART 6

MANAGEMENT AND MAINTENANCE OF STRUCTURES

ANNEX 7.6/E – List of Structures subject to Assessment and Upgrading of Vehicle Parapets to Transport Scotland Interim Advice Note No 25

Structure Ref No.	Structure Name
A701 0 W90	JERICO
A701 100	BROOMLANDS RAIL
A701 70	BURRANCE
A725 160	BLANTYRE RAIL
A725 200	BOGS BRAE RAIL
A725 220	LITTLE PARKHEAD RAIL
A726 170	COLLEGE MILTON RAIL
A737 120 C20	KERSLAND
A737 120 C80	COALBURN
A737 145 C80	RISK BRIDGE
A737 280	LINCLIVE ROAD
A737 70 C4	SMITHSTONE
A737 70 C4 (NB)	SMITHSTONE
A737-155	AYR LINE RAIL
A737-290	LINCLIVE R/B NO.2
A737-300	LINCLIVE I/C
A737-70 (NE)	NE
A737-70 (NW)	NW
A737-70 (SE)	SE
A737-70 (SW)	SW
A738 20 (NE)	NE
A738 20 W0	BRIDGE 2 SW
A738-10	BR U/B NO.12
A738-20	SW
A738-20	SE
A738-20	NW
A74 110	KIRKPATRICK RAIL SS
A75 190	CLEUCHBRAE
A75 200	WOODSIDE MILL DAM
A75 200 C50	OXGANG
A75 660	PALNURE
A75 680 C60	CRAIGHLAW
A75 690	BARLAE
A75-310	GUILLYHILL RAIL
A75-40	RIGG RAIL
A75-760	LONDON ROAD RAIL
A76 100	WHITEHILL
A76 160	MARCHBURN (NORTH VERGE)

Structure Ref No.	Structure Name
A76 160	MARCHBURN (SOUTH VERGE)
A76 160 C14	MARCH BRIDGE
A76 20 C60	BURNSIDE
A76 300	LMS U/B 2
A76 340 C46	WOODHEAD BRIDGE
A76 360	BELLFIELD INTERCHANGE SOUTH
A76 370	BELLFIELD INTERCHANGE NORTH
A76 50	BERSCAR
A76 70 C75	AUCHENSELL CULVERT (NORTH VERGE)
A76 70 C75	AUCHENSELL CULVERT (SOUTH VERGE)
A76 85 C10	LIMECLEUCH (NORTH VERGE)
A76 85 C10	LIMECLEUCH (SOUTH VERGE)
A76-210	NEW CUMNOCK STN RAIL
A76-230	LMS NO.169
A76-330	BARGOWAR RAIL
A77 100 C99	BALLANTRAE CC
A77 140 C18	STAIDHOLM
A77 140 C20	PINBAIN
A77 140 C20	PINBAIN CULVERT (S)
A77 200 C55	BURNSIDE NURSERY
A77 230 C92	PARISH MARCH (SOUTH BOUND)
A77 230 C92	PARISH MARCH (NORTH BOUND)
A77 260 C65	KEWNSTON
A77 300 C33	DALMILLING CULVERT
A77 310	BR U/B 5A
A77 312 C50	CLUNE CULVERT
A77 360 C12	BROCKET
A77 360 W41	DANEPARK
A77 50	LEFFNOL
A77-10	CAIRNRYAN ROAD RAILWAY
A77-200	BRIDGEMILL RAIL
A77-240	KIRKOSWALD RAIL STATION
A78 100 W99	GOGO EAST WALL
A78 110 W55	RED CROSS HOUSE
A78 120	KELBURN
A78 130 C33	FAIRLIE SCHOOL CULVERT
A78 200 W77	B7048 JUNCTION
A78 200 W95	GALLEON INN
A78 3	INVERKIP STREET RAIL
A78 310	GARNOCK WATER
A78 50 W38	ADJACENT NORTH LODGE
A78 50 W59	WEYMSS BAY ROAD/ RAIL
A78 50 W80	WEYMSS BAY ROAD
A78 6	NEWTON STREET RAIL
A78 60 W99	AT KELLYBURN BRIDGE
A78 70 W58	SKELMORLIE WALL
A78 80	SKELMORLIE
A78 80 W87	AUCHENGARTH SOUTH
A78 90	ST FILLANS
A78 90 W16	KNOCK CASTLE NORTH

Structure Ref No.	Structure Name
A78 90 W66	GREENNOCK WALL
A78-130	FAIRLIE TUNNEL
A78-270	NW
A78-270	SE
A78-270	SW
A78-270	NE
A78-540	AUCHENGATE RAIL
A8 - 140	BROADFIELD WEST RAIL
A8 -130	BROADFIELD EAST RAIL
A8 210	GREENOCK S SUBWAY
A82 160	HOWGATE
A82 90	AUCHENTORLIE (SOUTH BOUND)
A82 90	AUCHENTORLIE (NORTH BOUND)
A82S-157	DALMOAK RAIL
A898 100	ERSKINE
M73 1-2 70	ELLISMUIR FARM
M73 2-2 20	M73 OVER M8 R/BOUT
M73 2-2 30	M73 OVER M8
M73 2-3 10	MANSE ROAD RAIL
M73 2-3 47	BOTHLIN O/B
M73 3-3 10	A80 O/B
M73-2-2-10	M73 OVER RAIL
M73S 1-1 10	M73 SB - M74 WB SLIP
M73S 1-1 20	M74 EB - M73 NB SLIP
M73S 1-1 30	M73 SB - M74 WB SLIP
M73S 1-1 40	M73 SB - M74 EB SLIP
M74 3-2 80	M74 RAIL
M74 5-4 60	UDDINGSTON JUNCTION RAIL
M74 5-5-10	BOTHWELLHAUGH NORTH
M74 6-6-10	M74 OVER A723
M74-5-5-20	BOTHWELLHAUGH SOUTH
M74-7-6-90	AVON
M74S 4-4 10	M74 WB - M73 NB SLIP
M77 1-0 50	BELLAHOUSTON RAIL
M77 1-1 20	DUMBRECK ROAD/RAIL
M77 3-2 40	KENNISHEAD ROAD RAIL
M77 4-3 20	PATTERTON RAIL
M77-1-0-70	GOWER STREET BRIDGE
M8 13-13 30	PROVAN VIADUCT EB
M8 13-13 31	PROVAN VIADUCT WB
M8 14-14 20	BLOCHAIRN ROAD / RAIL
M8 15-15 10	BAIRD STREET O/B
M8 17-17 40	GREAT WESTERN ROAD O/B
M8 18 19 20	CHARING X STATION (RAIL)
M8 19-19 10	M8 MAIN APPROACHES NORTH EB
M8 21-21 11	SCOT ST VIA EB SEC
M8 21-21 12	SCOT ST VIA EB MAIN
M8 21-21 13	SCOT ST VIA WB MAIN
M8 21-21 14	SCOT ST VIA WB SEC
M8 22-23 50	BELLAHOUSTON RAIL

Structure Ref No.	Structure Name
M8 23-23 20	PAISLEY ROAD W NTH OB
M8 24-25 30	CRAIGTON RAIL TUNNEL
M8 24-25 31	CRAIGTON ROAD UP
M8 25-26 55	KGV DOCK ACCESS
M8 26-27 75	ARKLESTON BRIDGE O/B
M8 8-9 20	MAINHILL ROAD RAIL
M8-18-18-10	CHARING X TUNNEL
M8-18-19-20	CHARING X STATION (OVER M8)
M8-18-19-40	BATH STREET
M8-18-19-80	ST. VINCENT STREET
M8-26-26-10	HILLINGTON RAIL
M8-26-26-20	HILLINGTON SLIP ROAD
M8S 17-17 60	ST GEORGE ROAD
M8S 19-19 60	BOTHWELL STREET OFF RAMP
M8S 29-29 30	ST JAMES VIADUCT A EB
M8S 29-29 40	ST JAMES VIADUCT B WB
M8S 8-8 20	M73 EB - M73 SB SLIP
M8S 8-8 30	M73 NB M8 WB SLIP
M8S 8-8 60	M8 R/BOUT NW LEG O/B
M8S 8-8-130	M8EB - M73 SB SR

This is Annex 7.6/F to Schedule 7 Part 6 referred to in the foregoing Agreement between Scottish Ministers and Scotland TranServ being a Joint Venture comprising of Balfour Beatty Civil Engineering Limited and Mouchel Limited.

SCOTTISH MINISTERS' REQUIREMENTS

SCHEDULE 7 PART 6

MANAGEMENT AND MAINTENANCE OF STRUCTURES

ANNEX 7.6/F – List of Structures Subject to Identification of 'Particularly at Risk' Supports to Transport Scotland Interim Advice Note 29

SCOTTISH MINISTERS' REQUIREMENTS

SCHEDULE 7 PART 6

MANAGEMENT AND MAINTENANCE OF STRUCTURES

ANNEX 7.6/F – List of Structures Subject to Identification of 'Particularly at Risk' Supports to Transport Scotland Interim Advice Note 29

Structure Ref No.	Structure Name
A726 161 F	NEW LINDORES DR. F/B
A737 180 F	MILLIKEN PARK RD F/B
A737 210 F	NETHER JOHNSON F/B
A737 240 F	KILMALCOLM F/B
A737 250 F	CLIPPENS ROAD F/B
A75 335 F	COLLEGE ROAD F/B
A75 340 F	GLASGOW ROAD F/B
A77 365 F	HANSEL VILLAGE F/B
A77 470 F	MILTON ROAD F/B
A78 370 F	FOOTBRIDGE 6
A78 380 F	FOOTBRIDGE 5
A78 400 F	FOOTBRIDGE 4
A78 41 F	INVERKIP MARINA F/B
A78 480 F	FOOTBRIDGE 3
A78 520 F	FOOTBRIDGE 2
A78 530 F	FOOTBRIDGE 1
A78 9 F	BRANCHTON F/B
A8 160 F	KELBURN F/B
A82 170 F	CARMAN F/B
M74 8-7 F30	SHAWS F/B
M74S 6-6 F100	NE M74 SLIP F/B
M74S 6-6 F100	NE M74 SLIP F/B
M74S 6-6 F70	NW M74 SLIP F/B
M74S 6-6 F80	SW M74 SLIP F/B
M74S 6-6 F90	SE M74 SLIP F/B
M77 2-1 F40	CORKERHILL F/B
M77 3-2 F30	DARNLEY-ARDEN F/B
M8 10-11 F40	GARTHAMLOCK RD F/B
M8 10-11 F60	HORNDEAN CRESENT F/B
M8 11-12 F25	LONGSTONE ROAD F/B
M8 12-13 F50	GALA STREET F/B
M8 13-14 F70	BLOCHAIRN F/B 2
M8 14-15 F60	JAMES NISBET ST F/B
M8 15-16 F60	NORTH WALLACE ST F/B
M8 18-18 F30	CHARING CROSS F/B
M8 19-19 F70	ANDERSTON X F/B
M8 21-22 F50	CORNWALL STREET F/B
M8 22-22 F40	KIRKWOOD STREET F/B
M8 22-22 F90	PERCY STREET F/B

Structure Ref No.	Structure Name
M8 22-23 F62	BEECH AVENUE F/B
M8 26-27 F40	HILLINGTON F/B
M8 9-10 F75	HALLIBURTON CRES F/B
M80 1-2 F40	ROBROYSTON SRVCE F/B
M8S 14-14 F10	BLOCHAIRN F/B 4
M8S 14-14 F30	BLOCHAIRN F/B 5
M8S 15-15 F100	ROYAL INFIRMARY F/B
M8S 25-25 F40	RAMP A F/B
A725 100	FARM O/B
A725 120	HIGH BLANTYRE WEST
A725 130	HIGH BLANTYRE EAST
A725 230	BELLZIEHILL S O/B
A725 240	BELLZIEHILL N O/B
A725 250	N ALDERSTON I/C O/B
A737 220	BARROCHAN RD I/C O/B
A737 230	BARBUSH FARM O/B
A737 270	LINCLIVE VIADUCT
A75 120	STAPLETON ROAD O/B
A75 150	NORTH STREET O/B
A75 165	VIOLETBANK O/B
A75 170	HOWES O/B
A75 250	BROWNRIGG O/B
A75 30	KIRTLE WATER
A75 350	HARDTHORN ROAD O/B
A75 360	TERREGLES ROAD O/B
A75 370	ASH ROAD O/B
A75 475	LODGE FARM O/B
A75 60	NIVENHILL O/B
A76 245	CAIRN ROAD O/B
A76 288	DARNLAW FARM O/B
A77 200	BRIDGEMILL RAIL
A77 330	SHAWHILL O/B
A77 360	WHITESIDE O/B
A77 380	INCHGOTRICK O/B
A77 400	BRIDGEHOUSE O/B
A77 410	WHATRIGGS O/B
A77 420	RIVER IRVINE NW SLIP
A77 430	RIVER IRVINE (KBP)
A77 440	RIVER IRVINE NE SLIP
A77 450	LONDON ROAD O/B
A77 480	GRASSYARDS ROAD O/B
A77 510	BROOMBRAE O/B
A77S 360	BELLFIELD INT'GE S
A77S 370	BELLFIELD INT'GE N
A78 1	HIGH STREET GREENOCK
A78 10	IBM O/B
A78 235	SORBIE ROAD O/B
A78 245	GREENHEAD ROAD
A78 255	HAYOCKS ROAD O/B
A78 320	A737 FLYOVER O/B

Structure Ref No.	Structure Name
A78 360	LONG DRIVE O/B
A78 390	BANK STREET O/B
A78 410	MILL ROAD O/B
A78 430	ANNICK ROAD O/B
A78 470	RIVER IRVINE (IBP)
A78 50	BRUEACRE
A78 560	HILLHOUSE ROAD O/B
A78 570	COLLENAN ROAD O/B
A78 580	DUNDONALD ROAD O/B
A78S 340	EGLINTON I/C N O/B
A78S 350	EGLINTON I/C N O/B
A78S 440	WARRIX I/C N O/B
A78S 450	WARRIX I/C S O/B
A78S 500	NEWHOUSE I/C N O/B
A78S 510	NEWHOUSE I/C S O/B
A82 160	HOWGATE
A898 100	ERSKINE
A898 90	A726 ERSKINE APPR'CH
A898S 120	A82 WB SR OVER A898
A898S 140	A898 EB SR OVER A82
A8S 105	M8 R/BOUT SE LEG
M73 1-2 70	ELLISMUIR FARM O/B
M73 2-2 20	M73 OVER M8 R/BOUT
M73 2-2 30	M73 OVER M8
M73 2-2 40	M73 OVER A89
M73 2-3 10	MANSE ROAD RAIL
M73S 1-1 10	M73 SB - M74 WB SLIP
M73S 1-1 20	M74 EB - M73 NB SLIP
M73S 1-1 30	M73 SB - M74 WB SLIP
M73S 1-1 40	M73 SB - M74 EB SLIP
M73S 2-2 50	M8 R/BOUT-M73 NB SR
M73S 2-2 60	M73 SB-M8 R/BOUT SR
M74 10-10 10	WELLBURN O/B
M74 10-9 70	VERE ROAD O/B
M74 11-10 10	FOLKERTON MILL O/B
M74 11-10 75	EASTWOOD O/B
M74 11-10 90	NETHAN VIADUCT
M74 2-2 10	CARMYLE AVENUE I/C
M74 3-3 10	DALDOWIE I/C O/B
M74 5-4 15	BOTHWELL PK FARM O/B
M74 5-4 30	FALLSIDE ROAD O/B
M74 5-4 40	BELLSHILL ROAD
M74 5-4 70	OLD MILL ROAD O/B
M74 5-4 80	POWBURN TOLL O/B
M74 5-4 90	OLD GLASGOW ROAD O/B
M74 5-5 10	BOTHWELLHAUGH I/C N
M74 5-5 20	BOTHWELLHAUGH I/C S
M74 6-6 10	M74 OVER A723
M74 7-6 25	BOG O/B
M74 7-6 80	ROSS HOUSE O/B

Structure Ref No.	Structure Name
M74 7-7 10	A72 O/B
M74 8-7 50	BURNHEAD ROAD O/B
M74 8-7 85	SEWAGE WORKS ACCESS
M74 8-8 10	SWINHILL
M74 9-8 20	LAIRS O/B
M74 9-8 65	LOCHHEAD O/B
M74 9-8 85	CANDERMILL MARLAGE
M74S 4-4 10	M74 WB - M73 NB SLIP
M74S 6-6 20	A723 SB - M74 NB SR
M74S 6-6 30	M74 NB - A723 NB SR
M74S 6-6 40	M74 SB - A723 SB SR
M74S 9-9 20	VERE RD N SLIP O/B
M74S 9-9 5	STRATHAVEN RD SLIP
M77 1-1 10	DUMBRECK ROAD O/B
M77 2-1 30	WHITE CART
M77 2-2 10	BARRHEAD RD I/C O/B
M77 3-2 40	KENNISHEAD ROAD/RAIL
M77 3-3 10	NITSHILL ROAD O/B
M77 4-3 50	PATTERTON FARM O/B
M77 5-4 20	AYR ROAD O/B
M77 5-4 70	BARRHEAD ROAD O/B
M8 10-10 10	WESTERHOUSE ROAD O/B
M8 11-11 10	STEPPS ROAD O/B
M8 11-12 60	GARTCRAIG ROAD O/B
M8 12-12 10	CUMBERNAULD ROAD O/B
M8 13-13 30	PROVAN VIADUCT EB
M8 13-13 31	PROVAN VIADUCT WB
M8 14-14 20	BLOCHAIRN ROAD RAIL
M8 15-15 10	BAIRD STREET O/B
M8 15-15 20	TOWNHEAD RAMP K WEST
M8 15-15 30	TOWNHEAD RAMP J CENT
M8 15-15 40	TOWNHEAD RAMP K CENT
M8 15-15 50	TOWNHEAD RAMP K EAST
M8 15-15 60	TOWNHEAD RAMP J EAST
M8 16-16 10	CRAIGHALL I/C WB 8B
M8 16-16 20	CRAIGHALL I/C EB 8A
M8 16-17 30	MARYHILL SPUR FO 9
M8 16-17 70	WOODSIDE VDUCT EB 11
M8 16-17 75	WOODSIDE VDUCT WB 12
M8 17-17 40	GREAT WESTERN RD O/B
M8 18-18 10	CHARING X TUNNEL O/B
M8 18-19 10	CHARING X PODIUM O/B
M8 18-19 40	BATH STREET O/B
M8 18-19 80	ST VINCENT ST O/B
M8 19-19 20	M8 MAIN APP NORTH WB
M8 19-20 50	KINGSTON
M8 20-20 10	M8 MAIN APP SOUTH EB
M8 20-20 20	M8 MAIN APP SOUTH WB
M8 21-21 11	SCOT ST VDUCT EB SEC
M8 21-21 12	SCOT ST VDCT EB MAIN

Structure Ref No.	Structure Name
M8 21-21 13	SCOT ST VIA WB MAIN
M8 21-21 14	SCOT ST VIA WB SEC
M8 23-23 10	DUMBRECK ROAD
M8 23-23 20	PAISLEY RD W NTH O/B
M8 23-23 21	PAISLEY RD W STH O/B
M8 24-24 10	HELEN STREET O/B
M8 25-25 20	BERRYKNOWES RD VDCT
M8 25-25 30	CLYDE TUNNEL APPR'CH
M8 25-26 40	WOYKA VIADUCT
M8 26-26 10	HILLINGTON RAIL
M8 26-26 30	HILLINGTON I/C E
M8 26-26 40	HILLINGTON I/C W
M8 26-27 75	ARKLESTON ROAD O/B
M8 27-27 10	RENFREW RD/PAISLEY
M8 27-28 55	WHITE CART VIADUCT
M8 28-28 10	GLASGOW AIRPORT SLIP
M8 29-29 10	ST JAMES I/C E O/B
M8 29-29 20	ST JAMES I/C W O/B
M8 29-30 80	A8 BISHOPTON O/B
M8 30-31 15	DRUMCROSS O/B
M8 30-31 35	RITCHIESTON O/B
M8 31-31 10	WEST FERRY I/C EAST
M8 31-31 20	WEST FERRY I/C WEST
M8 8-8 70	A89 WB O/B
M8 8-8 90	A89 EB O/B
M8 9-10 50	WARDIE ROAD O/B
M8 9-9 10	EASTERHOUSE ROAD O/B
M80 1-2 15	ROYSTON ROAD O/B
M80 1-2 50	ROBROYSTON ROAD O/B
M80 2-2 10	ROBROYSTON I/C
M80 2-3 75	WHITEHILL ROAD
M8S 13-13 10	PROVAN M80-M8WB SLIP
M8S 13-13 20	PROVAN M8EB-M80 SLIP
M8S 15-15 120	TOWNHEAD RAMP C SLIP
M8S 15-15 130	TOWNHEAD RAMP A SLIP
M8S 17-17 10	CHARING X OFF RAMP J
M8S 17-17 30	GT WESTERN ON RAMP
M8S 19-19 10	M8 MAIN APP NORTH EB
M8S 19-19 40	STOBCROSS OFF RAMP
M8S 19-19 50	WATERLOO ST ON RAMP
M8S 19-19 60	BOTHWELL ST OFF RAMP
M8S 19-19 70	NORTH ST OFF RAMP
M8S 19-19 80	NEWTON ST ON RAMP
M8S 20-20 30	WEST STREET OFF RAMP
M8S 20-20 40	WEST STREET ON RAMP
M8S 22-22 20	RAMP C RENFREW 1 O/B
M8S 22-22 30	RAMP A RENFREW 1 O/B
M8S 25-25 10	BERRYKNOWES SLIP
M8S 26-26 10	A8 RENFREW RD O/B
M8S 26-26 20	HILLINGTON I/C SLIP

Structure Ref No.	Structure Name
M8S 29-29 30	ST JAMES VIADCT A EB
M8S 29-29 40	ST JAMES VIADCT B WB
M8S 30-30 10	M898 WB - M8 NB SLIP
M8S 30-30 30	C22 SLIP O/B
M8S 8-8 100	M8 EB - M73 SB SLIP
M8S 8-8 110	M8 EB - A89 EB SLIP
M8S 8-8 120	M8 EB - M73 SB SLIP
M8S 8-8 130	M8 EB - M73 SB SLIP
M8S 8-8 40	OFF M8 R/BOU WB
M8S 8-8 50	ONTO M8 R/B EB SLIP
M8S 8-8 60	M8 R/BOU NW LEG
M8S 8-8 80	A89 WB - M8 WB SLIP

This is Annex 7.6/G to Schedule 7 Part 6 referred to in the foregoing Agreement between Scottish Ministers and Scotland TranServ being a Joint Venture comprising of Balfour Beatty Civil Engineering Limited and Mouchel Limited.

SCOTTISH MINISTERS' REQUIREMENTS

SCHEDULE 7 PART 6

MANAGEMENT AND MAINTENANCE OF STRUCTURES

ANNEX 7.6/G – Technical Approval Procedures for Assessment of Structures in Scotland

SCOTTISH MINISTERS' REQUIREMENTS

SCHEDULE 7 PART 6

MANAGEMENT AND MAINTENANCE OF STRUCTURES

ANNEX 7.6/G – Technical Approval Procedures for Assessment of Structures in Scotland

Assessor shall agree AIP with the TAA. This shall embrace all relevant documents from the TAS including the UK Design Manual for Roads and Bridges, and may include departures from standards or aspects not covered by standards.
↓ ↓
Assessment and check shall be carried out and the TAA shall be consulted on those aspects of the assessment which do not comply with the AIP. If further amendments to the AIP shall be required, either by the assessor or the Checker, these shall be approved by the TAA and an addendum to the AIP submitted.
↓ ↓
Assessor shall give recommendations on and agree with the TAA any substandard features identified by the assessment which are not to be upgraded. Any interim measures shall also be agreed at this stage.
↓ ↓
Assessment report submitted to the TAA with list of all substandard features identifying those which shall not be upgraded and giving recommendations for any Special Inspection or studies needed prior to the design of strengthening and/or improvement Operations.
↓ ↓
Assessor shall submit assessment and check certificates on which shall be recorded all agreed and/or approved departures from standards.
↓ ↓
TAA/OD accepts assessment and check certificates endorsing all departures from standards or aspects not covered by standards.
↓ ↓
END OF ASSESSMENT

DEFINITION

Assessment includes:

1. Load carrying capacity of deck and substructure
2. Parapets
3. Pier impact resistance
4. Safety fencing
5. Visibility
6. Vertical and Horizontal Clearances
7. Central reserve, carriageway, footway, and verge provision
8. Scour risk
9. All other aspects relative to the AIP

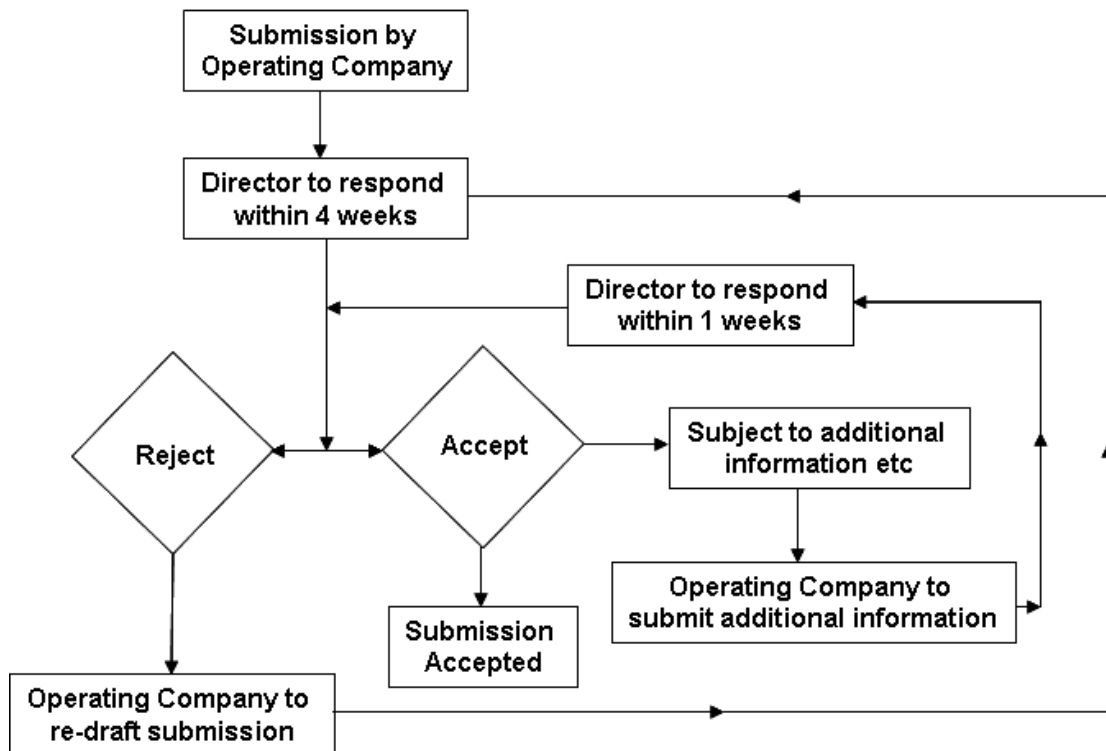
ABBREVIATIONS

TAA	= Technical Approval Authority
TAS	= Technical Approval Schedule
AIP	= Approval in Principle
OD	= Overseeing Department

NOTE:

1. For strengthening and or improvement works, Technical Approval procedures shall be the same as for new Structures.

Figure 1.1.1.A – Flow Chart for Departures from Standard or Aspects not Covered by Standards



This is Annex 7.6/H to Schedule 7 Part 6 referred to in the foregoing Agreement between Scottish Ministers and Scotland TranServ being a Joint Venture comprising of Balfour Beatty Civil Engineering Limited and Mouchel Limited.

SCOTTISH MINISTERS' REQUIREMENTS

SCHEDULE 7 PART 6

MANAGEMENT AND MAINTENANCE OF STRUCTURES

ANNEX 7.6/H – List of Sub-Standard Structures with Structural Assessments in Progress

SCOTTISH MINISTERS' REQUIREMENTS

SCHEDULE 7 PART 6

MANAGEMENT AND MAINTENANCE OF STRUCTURES

ANNEX 7.6/H – List of Sub-Standard Structures with Structural Assessments in Progress

There are no Structures in the South West Unit which have Structural Assessments in progress or under review.

This is Annex 7.6/I to Schedule 7 Part 6 referred to in the foregoing Agreement between Scottish Ministers and Scotland TranServ being a Joint Venture comprising of Balfour Beatty Civil Engineering Limited and Mouchel Limited.

SCOTTISH MINISTERS' REQUIREMENTS

SCHEDULE 7 PART 6

MANAGEMENT AND MAINTENANCE OF STRUCTURES

ANNEX 7.6/I – List of Sub-Standard Structures

SCOTTISH MINISTERS' REQUIREMENTS

SCHEDULE 7 PART 6

MANAGEMENT AND MAINTENANCE OF STRUCTURES

ANNEX 7.6/I – List of Sub-Standard Structures

Structure Reference	Structure Name	Sub-Standard Details
A76 160	MARCHBURN	38t ALL
A77S 360	BELLFIELD INTERCHANGE SOUTH	38t ALL
A77S 370	BELLFIELD INTERCHANGE NORTH	38t ALL
A701 120	EVAN WATER CATTLE CREEP	Weak verge – 7.5t
A726 170	COLLEGE MILTON RAIL	Weak verge – 33t
A737 100	PUTYAN	37.5t f/way
A898S 150	A898 WB SR OVER A878	7.5t edge beam
M8S 26-26 10	A8 OVERBRIDGE	Weak verge – 3t
M8 27-28 55	WHITE CART	20t ALL
M8 29-29 10	ST.JAMES I/C EAST	17t ALL
M8 29-29 20	ST.JAMES I/C WEST	17t ALL
M73S 1-1 10	M73 SB - M74 WB SR	Support >40t
M74S 9-9 20	VERE ROAD NORTH	17t & <17t f/way

This is Annex 7.6/J to Schedule 7 Part 6 referred to in the foregoing Agreement between Scottish Ministers and Scotland TranServ being a Joint Venture comprising of Balfour Beatty Civil Engineering Limited and Mouchel Limited.

SCOTTISH MINISTERS' REQUIREMENTS

SCHEDULE 7 PART 6

MANAGEMENT AND MAINTENANCE OF STRUCTURES

ANNEX 7.6/J – List of Structures with Known Defects Requiring Monitoring which are Sub-Standard

SCOTTISH MINISTERS' REQUIREMENTS

SCHEDULE 7 PART 6

MANAGEMENT AND MAINTENANCE OF STRUCTURES

ANNEX 7.6/J – List of Structures with Known Defects Requiring Monitoring which are Sub-Standard

Structure Reference	Structure Name	Monitoring				Comment
		Interim Measures (Formal/ Other)	Class (BD 79/06 App. C)	Interval	Details	
A76 160	MARCHBURN	Formal	1	3 Monthly	Visual Inspection for cracking at support	Structure due to be replaced as part of Rout Action Plan Improvements at Marchburn - no evidence of this bridge being part of improvement plan - to be investigated.
A77S 360	BELLFIELD INTERCHANGE SOUTH	Formal	1	Annually	Visual Inspection for cracking to deck soffit	Further Assessment recommended
A77S 370	BELLFIELD INTERCHANGE NORTH	Formal	1	Annually	Visual Inspection for cracking to deck soffit	Further Assessment recommended
A726 170	EVAN WATER CATTLE CREEP	Formal	1	6 Monthly	Visual inspection – soffit of service bay and edge beam	Strengthening proposal postponed due to headroom issue with landowner.
A737 100	PUTYAN	Formal	1	3 Monthly	Visual Inspection - Check for presence of flexural cracking under footways.	Verge to be strengthened.
A898S 50	A898 WB SR OVER A878	Other	1	Annually	Class 1 monitoring with measurement. Attach calibrated tell tales to wing wall / abutments joint at each corner of deck. Visual inspection of deck soffit for flexural cracking.	Re-assessment recommended using grillage analysis. Anomalies in TRBDB assessment results to be discussed.

Structure Reference	Structure Name	Monitoring				Comment
		Interim Measures (Formal/ Other)	Class (BD 79/06 App. C)	Interval	Details	
M8S 26-26 10	A8 OVERBRIDGE	Other	1	See Comments	An inspection is to be undertaken to determine the condition of the service bay soffit. It is proposed to install safety fence along kerb line and thereafter further inspection should not be required unless the safety fence is breached.	Service bays cantilevered out from the deck edge on the side remote from the carriageway are in poor condition with several cover slabs broken or missing.
M8 27-28 55	WHITE CART	Formal	1 and 2	See Comments	Box Girder – Class 2 monitoring – Thorough inspection inside box of overstressed areas. Examination of weld cracking and investigate deformation of plates and stiffeners.	Strengthening works currently ongoing.
M8 29-29 10	ST.JAMES I/C EAST	Other	2	6 Monthly	Topographical survey to monitor the positions of bankseats, side slope levels and the verticality of the intermediate support Columns.	Column protection finished November 2007
M8 29-29 20	ST.JAMES I/C WEST	Other	2	6 Monthly	Topographical survey to monitor the positions of bankseats, side slope levels and the verticality of the intermediate support Columns.	Column protection finished November 2007
M73S 1-1 10	M73 SB - M74 WB SR	Formal	1	3 Monthly	Visual inspection of longer leg of Bent No 6	Further Assessment required - design in progress
M74S 9-9 20	VERE ROAD NORTH	Other	1	Annually	Visual inspection of deck soffit obtuse corners for signs of cracking	Based on the shear capacity of the deck grillage edge beam the assessment report recommends a 17 tonne weight restriction however the bridge is permanently closed for traffic and only access to 1 house and 1 farm

This is Annex 7.6/K to Schedule 7 Part 6 referred to in the foregoing Agreement between Scottish Ministers and Scotland TranServ being a Joint Venture comprising of Balfour Beatty Civil Engineering Limited and Mouchel Limited.

SCOTTISH MINISTERS' REQUIREMENTS

SCHEDULE 7 PART 6

MANAGEMENT AND MAINTENANCE OF STRUCTURES

ANNEX 7.6/K – List of Structures with Known Defects Requiring Monitoring that are not Sub-Standard

SCOTTISH MINISTERS' REQUIREMENTS

SCHEDULE 7 PART 6

MANAGEMENT AND MAINTENANCE OF STRUCTURES

ANNEX 7.6/K – List of Structures with Known Defects Requiring Monitoring that are not Sub-Standard

Structure Reference	Structure Name	Monitoring				Comment
		Interim Measures	Class	Interval	Details	
A701 80	MOLLINBURN	Other	1	3 Monthly	Record readings from tell tales. Visual inspection of uplink abutment - record extent of scour.	
A76 120	GUILDHALL	Other	1	6 Monthly	Record readings from telltales on cracks Span 1, Span 2 & End Support 4.	
A77 260	SMITHSTON	Formal	1	Weekly	Visual inspection of masonry arch section.	
A8 120	FINLAYSTONE	Formal		Annually	Monitor brick arch as it may deteriorate.	
A898 100	ERSKINE	Formal	1	See comments	For frequency of routine inspections refer to Maintenance Manual (MM) frequency based on criticality and vulnerability rating for each element. Rig collision - check weld defects to repair steelwork MM Inspection Section 1.0 annual. Trough Survey - check for presence of water in top flange stiffener MM Spec Inspection Section 11.0 - annual. Deck Profile - level survey of deck - 6 monthly.	Routine Inspections detailed in Maintenance Manual. Strengthening works ongoing - no requirement for monitoring in respect of deficiencies in load carrying capacity.
M73 1-2 55	NORTH CALDER WATER	Other	1	6 Monthly	Visual inspection of uplink embankment for further erosion.	
M73 2-3 47	BOTHLIN O/B	Other	1		Visual inspection and monitoring of cracks on longitudinal beams.	
M74 6-6 50	M74 OVER M74 SB SR	Other	1	Annually	Visual inspection and monitoring of longitudinal cracks to deck soffit.	

Structure Reference	Structure Name	Monitoring				Comment
		Interim Measures	Class	Interval	Details	
M74 7-6 25	BOG O/B	Other	1	Annually	Level survey of deck	These four accommodation bridges all exhibit the same defect.
M74 7-6 80	ROSS HOUSE O/B	Other	1	Annually		
M74 8-7 85	SEWAGE WORKS ACCESS	Other	1	Annually		
M74 9-8 65	LOCHHEAD O/B	Other	1	Annually		
M74S 6-6 30	M74 NB - A723 NB SR	Formal	1		De-mec gauge monitoring of crack at abutment. Interval to be confirmed	From Interim Management Strategy for Concrete Half Joint structures
M74S 7-6 90	AVON	Formal	1		De-mec gauge monitoring of crack at abutment. Interval to be confirmed	From Interim Management Strategy for Concrete Half Joint structures
M77 1-0 30	NITHSDALE ROAD O/B	Other	1	3 Monthly	Binocular inspection of deck soffit. Recommend removal of loose concrete as appropriate.	
M8 16-17 70	WOODSIDE VDUCT EB 11	Other	1	Annually	Regular monitoring of the half joints.	Visual/photographic inspection
M8 16-17 75	WOODSIDE VDUCT WB 12	Other	1	Annually	Regular monitoring of the half joints.	Visual/photographic inspection
M8 18-19 10	CHARING X PODIUM	Formal	1	3 monthly	Monitor cracking of columns 1 & 2 to ensure not propagating	From M8 Corridor Bridge Maintenance Strategy
M8 19-19 10	M8 MAIN APP NORTH EB	Formal	1	See Comments	Precast cladding and parapet inspections, Class 1 on the un-refurbished cope and parapet at 3 monthly intervals.	Visual and tapping inspection carried out when appropriate TM in place
M8 19-19 20	M8 MAIN APP NORTH WB	Other	1	See Comments	Class 1 Inspection of half-joints at 3 monthly intervals.	Visual/photographic inspections of all H-J's carried out on regular basis
M8 20-20 10	M8 MAIN APPROACH SOUTH EAST BOUND	Formal	1	See comments	Precast cladding and parapet inspections, Class 1 on the un-refurbished cope and parapet at 3 monthly intervals. Class 1 inspections of half joints at 3 monthly intervals.	Visual and tapping inspection carried out when appropriate TM in place Visual/Photographic inspections of all half joints carried out on regular basis
M8 20-20 20	M8 MAIN APPROACH SOUTH WEST BOUND	Formal	1	See comments	Precast cladding and parapet inspections, Class 1 on the un-refurbished cope and parapet at 3 monthly intervals. Class 1 inspections of half joints at 3 monthly intervals.	Visual and tapping inspection carried out when appropriate TM in place Visual/Photographic inspections of all half joints carried out on regular basis

Structure Reference	Structure Name	Monitoring				Comment
		Interim Measures	Class	Interval	Details	
M8 20-20 30	WEST STREET OFF RAMP	Formal	1	See Comments	Precast cladding and parapet inspections, Class 1 on the un-refurbished cope and parapet at 3 monthly intervals. Class 1 inspections of half joints at 3 monthly intervals.	Visual and tapping inspection carried out when appropriate TM in place Visual/Photographic inspections of all half joints carried out on regular basis
M8 20-20 40	WEST STREET ON RAMP	Formal	1	See Comments	Precast cladding and parapet inspections, Class 1 on the un-refurbished cope and parapet at 3 monthly intervals. Class 1 inspections of half joints at 3 monthly intervals.	Visual and tapping inspection carried out when appropriate TM in place Visual/Photographic inspections of all half joints carried out on regular basis
M8 21-21 11	SCOTLAND STREET	Formal	1		De-mec gauge monitoring of crack at half joint 6. Interval to be confirmed	From Interim Management Strategy for Concrete Half Joint structures - 2005 PI
M8 22-22 20	RAMP C RENFREW 1	Formal	1	6 monthly	Monitor intermediate support bearings	Intermediate support bearings have exceeded lateral movement. From Interim Management Strategy for Concrete Half Joint structures - 2005 PI
M8 23-23 10	DUMBRECK ROAD	Other	1	GI	Monitoring not required outwith GI/PI programme.	
M8S 19-19 50	WATERLOO STREET ON RAMP	Formal	1	See Comments	Class 1 Inspections of half joints at 3 monthly intervals.	Visual/photographic inspections of all H-J's carried out on regular basis
M8S 19-19 60	BOTHWELL STREET OFF RAMP	Formal	1	See Comments	Class 1 Inspections of half joints at 3 monthly intervals.	Visual/Photographic inspections of all half joints carried out on regular basis
M8S 19-19 70	NORTH STREET OFF RAMP	Formal	1	See Comments	Class 1 Inspections of half joints at 3 monthly intervals.	Visual/photographic inspections of all H-J's carried out on regular basis
M8S 19-19 80	NEWTON STREET ON RAMP	Formal	1	See comments	Precast cladding and parapet inspections, Class 1 on the un-refurbished cope and parapet at 3 monthly intervals. Class 1 Inspections of half joints at 3 monthly intervals.	Visual and tapping inspection carried out when appropriate TM in place. Visual/Photographic inspections of all half joints carried out on regular basis

Structure Reference	Structure Name	Monitoring				Comment
		Interim Measures	Class	Interval	Details	
M8S 19-20 50	KINGSTON BRIDGE	Formal	1	See comments	Spandrel wall inspections	Annual tapping inspection of spandrel walls. Additional inspection regime transferred from GCC to Amey.
M8S 20-20 40	WEST STREET ON RAMP	Other	1	6 Monthly	Inspection and monitor of the half joints using photographs.	
M8S 8-8 40	OFF M8 R/BOU WB	Formal	1	3 Monthly	Monitor movement of bearings at both end supports.	

This is Annex 7.6/L to Schedule 7 Part 6 referred to in the foregoing Agreement between Scottish Ministers and Scotland TranServ being a Joint Venture comprising of Balfour Beatty Civil Engineering Limited and Mouchel Limited.

SCOTTISH MINISTERS' REQUIREMENTS

SCHEDULE 7 PART 6

MANAGEMENT AND MAINTENANCE OF STRUCTURES

ANNEX 7.6/L – Strengthening and Replacement Programme for the Sub-Standard Structures

SCOTTISH MINISTERS' REQUIREMENTS

SCHEDULE 7 PART 6

MANAGEMENT AND MAINTENANCE OF STRUCTURES

ANNEX 7.6/L – Strengthening and Replacement Programme for Sub-Standard Structures

Structure Ref. No.	Structure Name	Proposed Year of Works				Comments
		2012/13	2013/14	2014/15	2015/16	
A76 160	MARCHBURN	x				To be re-assessed.
A76 360	BELLFIELD I/C SOUTH	x				To be re-assessed.
A76 370	BELLFIELD I/C NORTH					To be re-assessed.
A701 120	EVAN WATER CATTLE CREEP					To be strengthened.
A726 170	COLLEGE MILTON RAIL					To be strengthened.
A737 100	PUTYAN					Works in 2010/11.
A898S 150	A989 WB SR OVER A878					To be re-assessed.
M8S 26-26 10	A8 OVERBRIDGE					Safety fence to be installed.
M8 27-28 55	WHITE CART	x				Strengthening works ongoing.
M8 29-29 10	ST.JAMES I/C EAST					To be re-assessed.
M8 29-29 20	ST.JAMES I/C WEST					To be re-assessed.
M73S 1-1 10	M73SB - M74 WB SR					To be strengthened.
M74S 9-9 20	VERE ROAD NORTH					To be re-assessed.

Notes:

- The Proposed Year of Works is subject to the availability of funding and may change at the discretion of the Director.

This is Annex 7.6/M to Schedule 7 Part 6 referred to in the foregoing Agreement between Scottish Ministers and Scotland TranServ being a Joint Venture comprising of Balfour Beatty Civil Engineering Limited and Mouchel Limited.

SCOTTISH MINISTERS' REQUIREMENTS

SCHEDULE 7 PART 6

MANAGEMENT AND MAINTENANCE OF STRUCTURES

ANNEX 7.6/M – Structures with Bridge Access Gantries and or Runway Beams

SCOTTISH MINISTERS' REQUIREMENTS

SCHEDULE 7 PART 6

MANAGEMENT AND MAINTENANCE OF STRUCTURES

ANNEX 7.6/M – Structures with Bridge Access Gantries and or Runway Beams

Table 7.6/M.A - Structures with Bridge Access Gantries and or Runway Beams

Structure Reference Number	Structure Name	Access Gantry	Runway Beams	Comments
M8 27-28 55	WHITE CART VIADUCT	No	Yes	Last used in 1995
M73 1-2 55	NORTH CALDER WATER BRIDGE	No	Yes	Not used since first installed
M74 6-5 75	RAITH BRIDGE	No	Yes	Not used since first installed
A898 100	ERSKINE BRIDGE	Yes	Yes	New Gantry and runway beams installed in 2009/2010.

Table 7.6/M.B – Structures in the South West Unit Which Require Their Access Gantries and or Runway Beams to Remain Certified at All Times During the Contract

Structure Reference Number	Structure Name	Access Gantry	Runway Beams	Comments
A898 100	ERSKINE BRIDGE	Yes	Yes	New Gantry and runway beams installed in 2009/2010.

All gantries and or runway beams should be certified if they are to be used and have not previously been used for 12 months.

This is Annex 7.6/N to Schedule 7 Part 6 referred to in the foregoing Agreement between Scottish Ministers and Scotland TranServ being a Joint Venture comprising of Balfour Beatty Civil Engineering Limited and Mouchel Limited.

SCOTTISH MINISTERS' REQUIREMENTS

SCHEDULE 7 PART 6

MANAGEMENT AND MAINTENANCE OF STRUCTURES

ANNEX 7.6/N – List of Bridges with Agreement with Third Parties that Effect Existing and Future Management, Maintenance and Replacement

SCOTTISH MINISTERS' REQUIREMENTS

SCHEDULE 7 PART 6

MANAGEMENT AND MAINTENANCE OF STRUCTURES

ANNEX 7.6/N – List of Bridges with Agreement with Third Parties that Effect Existing and Future Management, Maintenance and Replacement

Structure Ref No.	Structure Name
A8 110	LANGBANK RAIL O/B
A75 365	MAXWELLTOWN RAIL O/B
A77 290	GLENGALL RAIL O/B
A77 310	BR U/B 5A
A77 460	CROOKEDHOLM RAIL O/B
A78 4	INVERKIP STREET RAIL
A78 270	BR U/B 3C
A78 290	GARNOCK RAIL O/B
A701 100	BROOMLANDS RAIL
A737 140	BR U/B 24 DISUSED
A898 100	ERSKINE
M73 2-3 50	GARTCOSH RAIL O/B
M74 3-2 80	M74 RAIL
M74 7-6 75	ROSS RAIL O/B
M77 1-0 50	BELLAHOUSTON RAIL

Notes:

1. All Structures above carry the Trunk Road over or under an operational railway line, except the BR U/B 24 Disused structure. This Structure carries the Trunk Road over a non-operational railway line.
2. The bridge agreements for the Structures are held by the Director.

This is Annex 7.6/O to Schedule 7 Part 6 referred to in the foregoing Agreement between Scottish Ministers and Scotland TranServ being a Joint Venture comprising of Balfour Beatty Civil Engineering Limited and Mouchel Limited.

SCOTTISH MINISTERS' REQUIREMENTS

SCHEDULE 7 PART 6

MANAGEMENT AND MAINTENANCE OF STRUCTURES

ANNEX 7.6/O – List of Bridges with Signed Low Headroom

SCOTTISH MINISTERS' REQUIREMENTS

SCHEDULE 7 PART 6

MANAGEMENT AND MAINTENANCE OF STRUCTURES

ANNEX 7.6/O – List of Bridges with Signed Low Headroom

Bridge Code	Bridge Name	Actual Minimum Headroom
A737 280	LINCLIVE ROAD	4.173
A77 400	BRIDGEHOUSE O/B	5.02
A78 1	HIGH STREET GREENOCK	3.5
A78 280	DUBBS ROAD(BYREHILL)	4.03
A898S 110	A898 SB SR-BRAES RD	4.98
A898S 150	A898 WB SR OVER A878	4.94
M74 5-4 15	BOTHWELL PK FARM O/B	4.94
M8 18-18 10	CHARING X TUNNEL O/B	5.02
M8 29-30 50	GEORGETOWN ROAD	3.94
M8S 19-19 50	WATERLOO ST ON RAMP	3.9
M8S 20-20 30	WEST STREET OFF RAMP	4.94

This is Annex 7.6/P to Schedule 7 Part 6 referred to in the foregoing Agreement between Scottish Ministers and Scotland TranServ being a Joint Venture comprising of Balfour Beatty Civil Engineering Limited and Mouchel Limited.

SCOTTISH MINISTERS' REQUIREMENTS

SCHEDULE 7 PART 6

MANAGEMENT AND MAINTENANCE OF STRUCTURES

ANNEX 7.6/P – List of Structures subject to Frequent Bridges Strikes with dates of Incidents Since 2001

SCOTTISH MINISTERS' REQUIREMENTS

SCHEDULE 7 PART 6

MANAGEMENT AND MAINTENANCE OF STRUCTURES

ANNEX 7.6/P – List of Structures subject to Frequent Bridges Strikes with dates of Incidents Since 2001

Structure Ref No.	Structure Name	Damage Description	Date
A726 160F	LINDORES DRIVE F/B	Severely damaged span & columns.	21/02/2002
M8 26-27 75	ARKLESTON	Minor Damage to steel beams.	2002
M8 26-27 75	ARKLESTON	Minor Damage to steel beams.	2004
M8 26-27 75	ARKLESTON	Minor Damage to steel beams.	2005
M8 26-27 75	ARKLESTON	Minor Damage to steel beams.	2007
M8 26-27 75	ARKLESTON	Damage to steel flange & web.	2008
M8S 21-22 G	GANTRIES G15 & G75	2 damaged soffit panels.	14/1/2005
M8 13-14 G80	GANTRY	Damaged steelwork.	16/7/2005
A77 450	LONDON ROAD	Damage to concrete soffit.	30/3/2006
A78 430	ANNICK ROAD	Damage to Concrete soffit.	19/04/2008
M74 3-2 30	GREENOAKHILL U/P	Damage to Concrete soffit.	22/05/2008
M8 26-27 F40	HILLINGTON F/B W/B	Steel beam damage.	18/09/2008