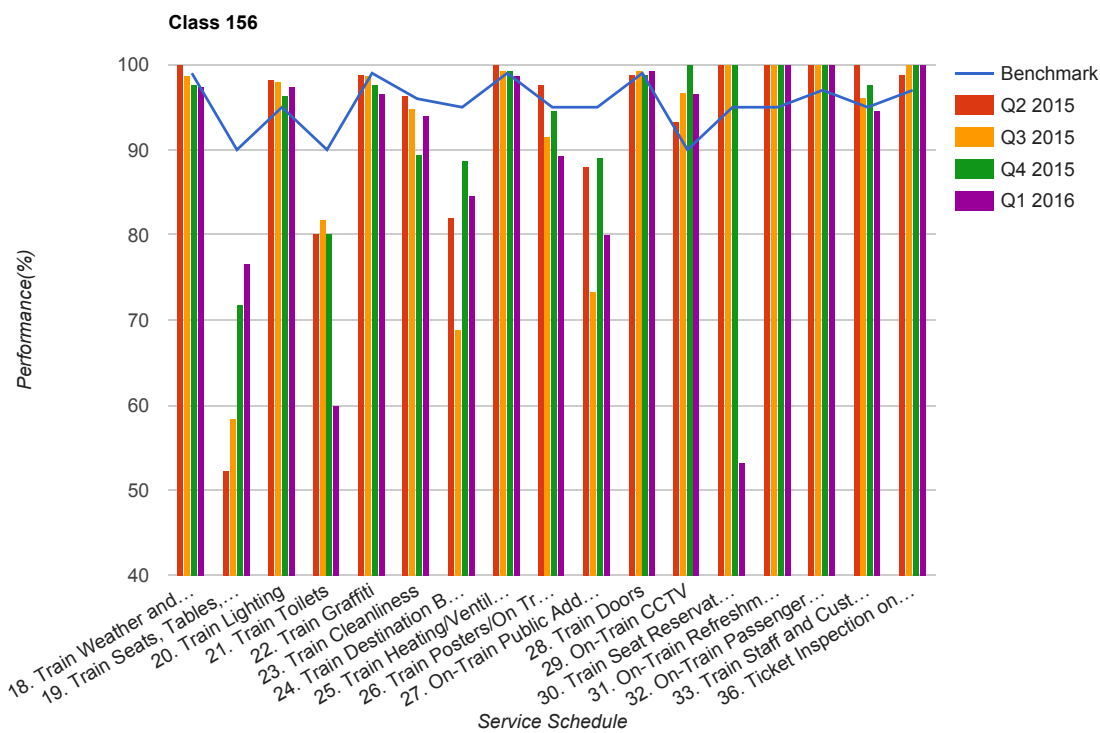


Quarter 2 2015 - Quarter 1 2016
Scotrail



Table

Service Schedule	Benchmark	Q2 2015	Q3 2015	Q4 2015	Q1 2016
18. Train Weather and Wind Proofing	99	100	98.7	97.65	97.33
19. Train Seats, Tables, Racks and other Passenger Facilities	90	52.33	58.44	71.76	76.67
20. Train Lighting	95	98.26	98.05	96.47	97.33
21. Train Toilets	90	80.23	81.82	80.23	60
22. Train Graffiti	99	98.84	98.7	97.65	96.67
23. Train Cleanliness	96	96.51	94.81	89.41	94
24. Train Destination Boards and Passenger	95	81.98	68.83	88.82	84.67
25. Train Heating/Ventilation	99	100	99.35	99.41	98.67
26. Train Posters/On Train Information	95	97.67	91.56	94.71	89.33
27. On-Train Public Address	95	88.07	73.47	89.06	80
28. Train Doors	99	98.84	99.35	98.82	99.33
29. On-Train CCTV	90	93.33	96.77	100	96.67
30. Train Seat Reservation System	95	100	100	100	53.33
31. On-Train Refreshment and Food Facilities	95	100	100	100	100

Service Schedule	Benchmark	Q2 2015	Q3 2015	Q4 2015	Q1 2016
32. On-Train Passenger Entertainment Systems and WiFi	97	100	100	100	100
33. Train Staff and Customer Care	95	100	96.1	97.65	94.67
36. Ticket Inspection on Trains	97	98.84	100	100	100