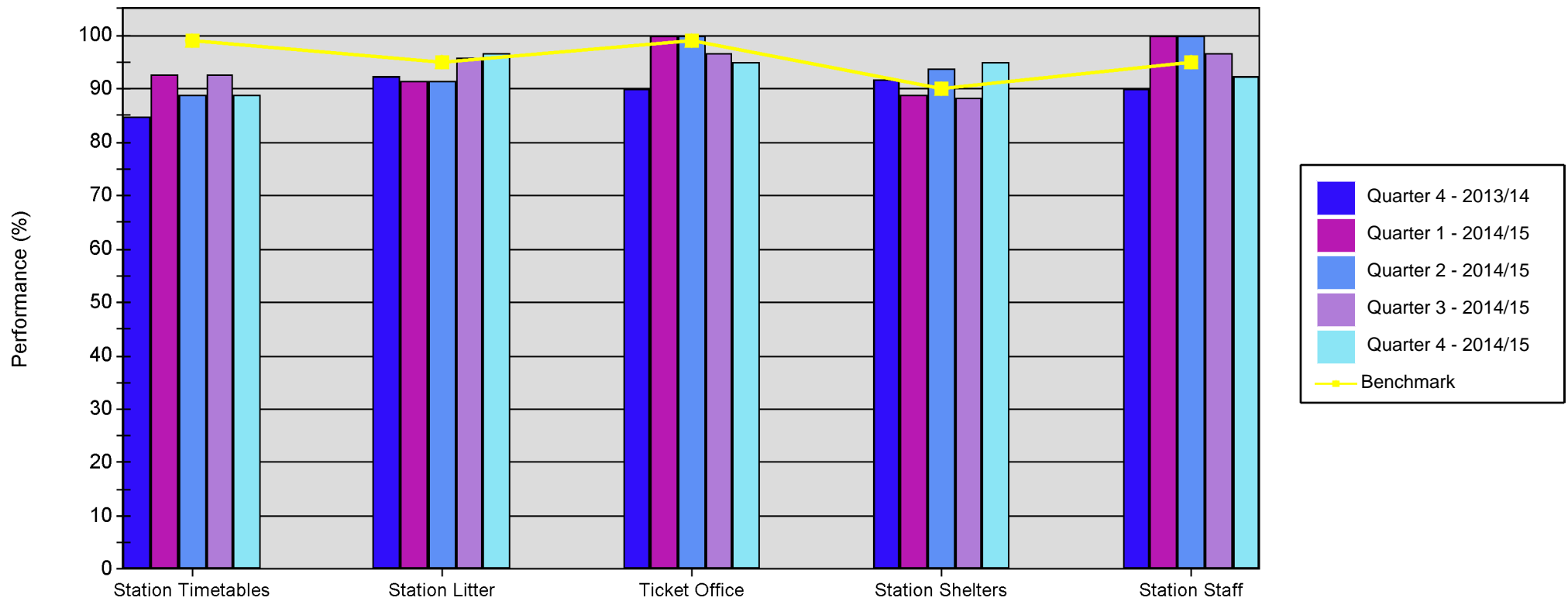


# Quarterly SQUIRE Performance Report

## Line of Route: Edinburgh- Dunfermline-Kirkcaldy - Edinburgh



|                     | Station Timetables | Station Litter | Ticket Office | Station Shelters | Station Staff |
|---------------------|--------------------|----------------|---------------|------------------|---------------|
| Quarter 4 - 2013/14 | 84.72              | 92.31          | 90.00         | 91.67            | 90.00         |
| Quarter 1 - 2014/15 | 92.59              | 91.45          | 100.00        | 88.80            | 100.00        |
| Quarter 2 - 2014/15 | 88.89              | 91.45          | 100.00        | 93.87            | 100.00        |
| Quarter 3 - 2014/15 | 92.59              | 95.73          | 96.67         | 88.31            | 96.67         |
| Quarter 4 - 2014/15 | 88.89              | 96.79          | 95.00         | 95.08            | 92.50         |
| Benchmark           | 99.00              | 95.00          | 99.00         | 90.00            | 95.00         |