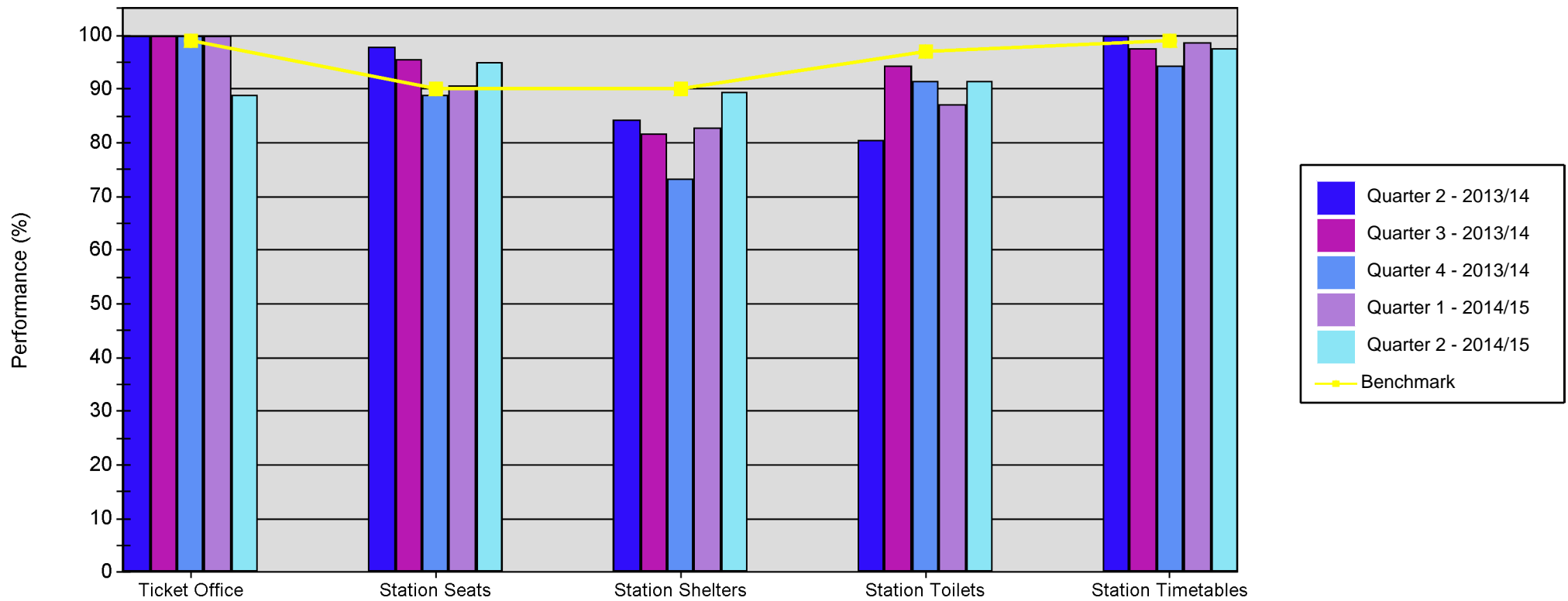


Quarterly SQUIRE Performance Report

Line of Route: Glasgow-Fort William/ Mallaig



	Ticket Office	Station Seats	Station Shelters	Station Toilets	Station Timetables
Quarter 2 - 2013/14	100.00	97.83	84.44	80.56	100.00
Quarter 3 - 2013/14	100.00	95.65	81.67	94.44	97.53
Quarter 4 - 2013/14	100.00	89.07	73.33	91.67	94.44
Quarter 1 - 2014/15	100.00	90.58	82.78	87.30	98.77
Quarter 2 - 2014/15	88.89	94.90	89.44	91.67	97.53
Benchmark	99.00	90.00	90.00	97.00	99.00