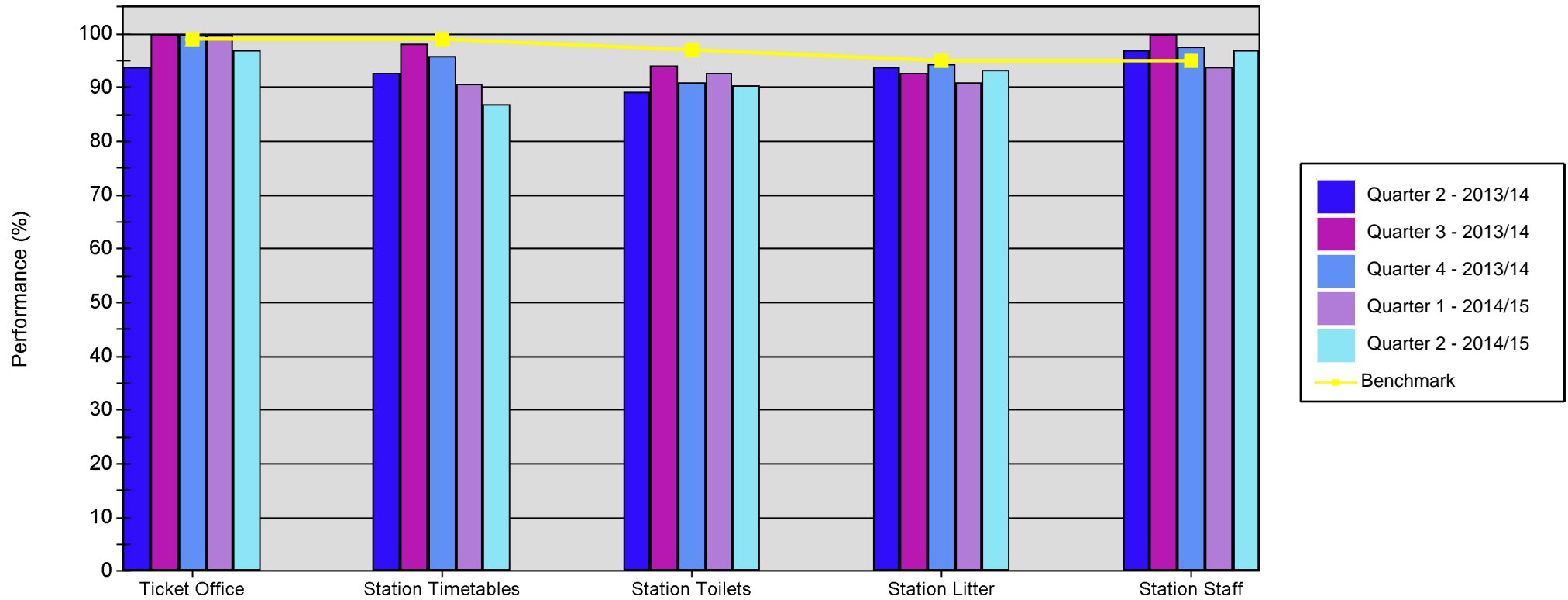


# Quarterly SQUIRE Performance Report

## Line of Route: Glasgow - Aberdeen/Dyce



	Ticket Office	Station Timetables	Station Toilets	Station Litter	Station Staff
Quarter 2 - 2013/14	93.94	92.59	89.29	93.89	96.97
Quarter 3 - 2013/14	100.00	98.15	94.05	92.78	100.00
Quarter 4 - 2013/14	100.00	95.83	91.07	94.58	97.73
Quarter 1 - 2014/15	100.00	90.74	92.81	91.11	93.94
Quarter 2 - 2014/15	96.97	87.04	90.48	93.33	96.97
Benchmark	99.00	99.00	97.00	95.00	95.00