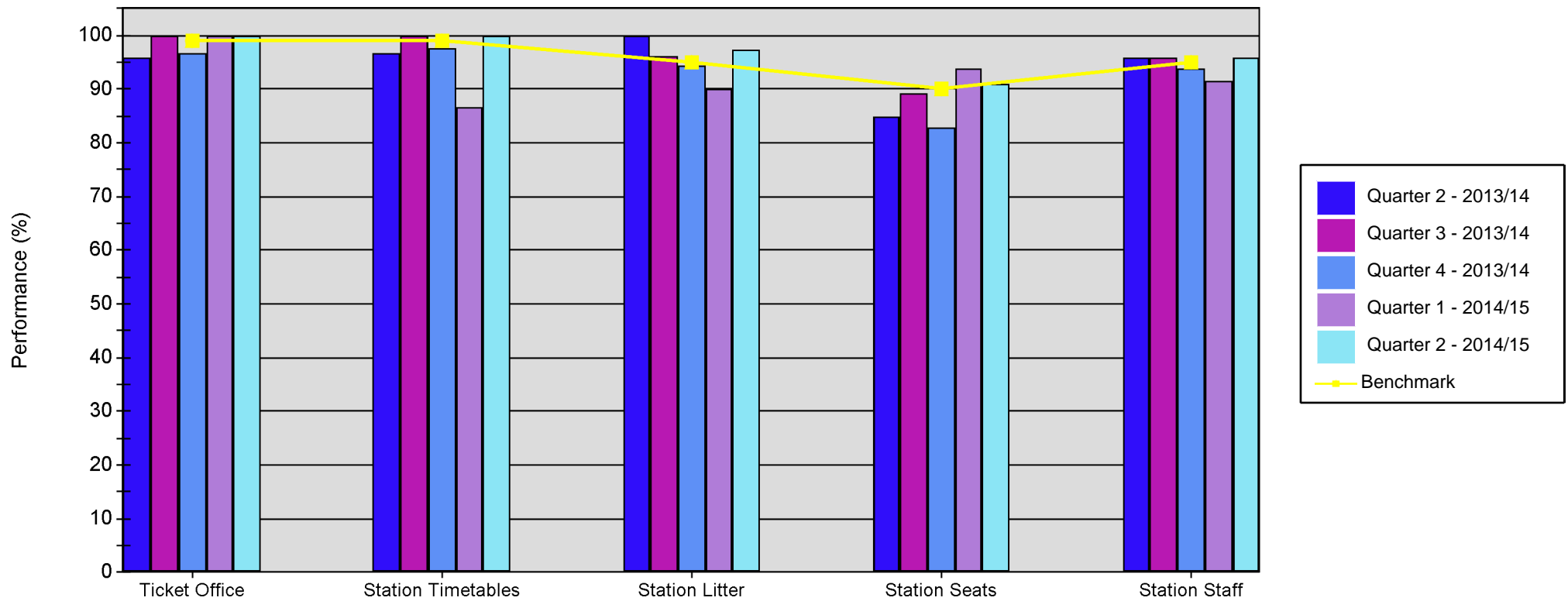


Quarterly SQUIRE Performance Report

Line of Route: Aberdeen -Inverness



	Ticket Office	Station Timetables	Station Litter	Station Seats	Station Staff
Quarter 2 - 2013/14	95.83	96.67	100.00	84.85	95.83
Quarter 3 - 2013/14	100.00	100.00	96.30	89.39	95.83
Quarter 4 - 2013/14	96.88	97.50	94.44	82.95	93.75
Quarter 1 - 2014/15	100.00	86.67	90.12	93.94	91.67
Quarter 2 - 2014/15	100.00	100.00	97.48	90.91	95.83
Benchmark	99.00	99.00	95.00	90.00	95.00