

2015 No. 70

ROAD TRAFFIC

**The North West Scotland Trunk Roads (Temporary Prohibitions
of Traffic and Overtaking and Temporary Speed Restrictions)
(No. 2) Order 2015**

Made - - - - - *16th February 2015*

Coming into force - - - - - *1st March 2015*

The Scottish Ministers make the following Order in exercise of the powers conferred by sections 2(1) and (2), 4(1) and 14(1)(a) and (4) of the Road Traffic Regulation Act 1984(a) and all other powers enabling them to do so.

In accordance with section 14(1) of that Act, they are satisfied that the traffic on the lengths of road specified in the Schedule should be restricted or prohibited because works are being or are proposed to be executed on or near those lengths of road.

In accordance with section 14(3) of that Act, they have had regard to the existence of alternative routes suitable for the traffic which will be affected by this Order.

Citation, commencement and cessation

1. This Order may be cited as the North West Scotland Trunk Roads (Temporary Prohibitions of Traffic and Overtaking and Temporary Speed Restrictions) (No. 2) Order 2015, comes into force on 1st March 2015 and ceases to have effect on 1st June 2015.

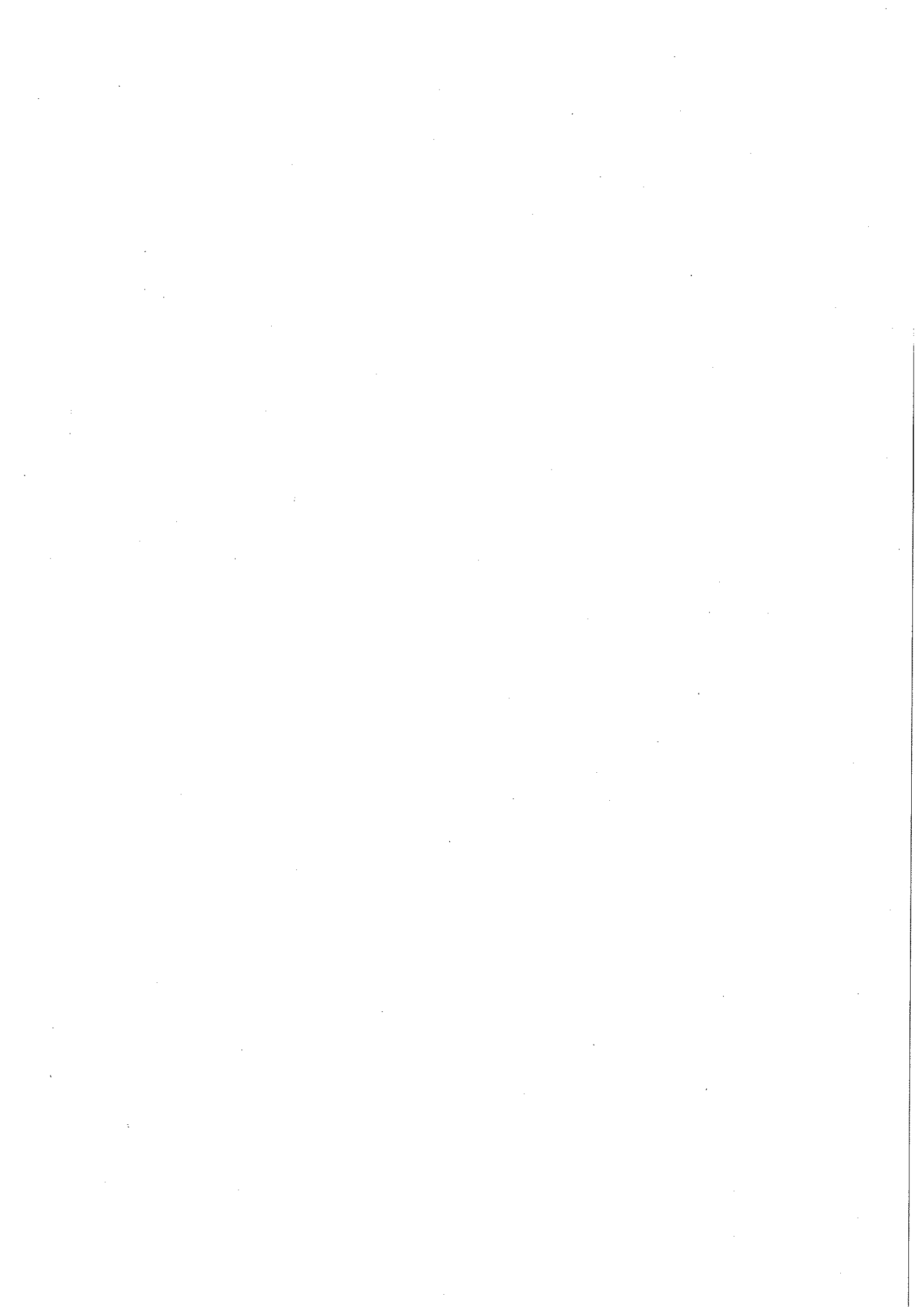
Interpretation

2. In this Order a reference to a numbered column is to the column in the Schedule to this Order bearing that number.

Prohibition on use of a road

3. No person may use, or permit the use of, any vehicle on a length of road, or part or parts of a length of road, specified in the Schedule when a prohibition is identified as applying to that length

(a) 1984 c.27; section 2(1) and (2) were amended by the New Roads and Street Works Act 1991 (c.22), Schedule 8, paragraph 18 and section 14 was substituted by the Road Traffic (Temporary Restrictions) Act 1991 (c.26), section 1(1) and Schedule 1. The Scottish Ministers are the traffic authority by virtue of section 121A of the Road Traffic Regulation Act 1984 (inserted by the New Roads and Street Works Act 1991, Schedule 8, paragraph 70 and amended by S.I. 2001/1400) as read with section 151(1) of the Roads (Scotland) Act 1984 (c.54) (relevantly amended by S.I. 2001/1400). The functions of the Secretary of State were transferred to the Scottish Ministers by section 53 of the Scotland Act 1998 (c.46) and S.I. 1999/1750.



of road, or a part or parts of that length of road, by means of one or more of the traffic signs prescribed in Diagram 7010.1 and 7105 of the Traffic Signs Regulations 2002((a)).

Prohibition on overtaking

4.—(1) No person may use, or permit the use of, any vehicle in such a way that it overtakes any other moving vehicle on a length of road, or a part or parts of a length of road, specified in the Schedule when a prohibition is identified as applying to that length of road, or a part or parts of that length of road, by means of a traffic sign prescribed in Diagram 632 of the Traffic Signs Regulations 2002.

(2) “Other moving vehicle” does not include a cycle, motor cycle, tricycle or any other vehicle not being a motor vehicle in accordance with section 140 of the Road Traffic Regulation Act 1984(b).

Speed restriction

5.—(1) No person may drive any vehicle on a length of road, or a part or parts of a length of road, specified in column 1 of Parts 1 and 2 of the Schedule at a speed exceeding that specified in column 2 when a restriction is identified as applying to that length of road, or a part or parts of that length of road, by means of a traffic sign prescribed in Diagram 670 of the Traffic Signs Regulations 2002.

(2) When convoy working is in operation and indicated by one or more of the traffic signs prescribed in Diagrams 7011, 7025, 7026, 7027, 7028 and 7029 of the Traffic Signs Regulations 2002, no person may drive any vehicle on a length of road, or a part or parts of a length of road, specified in column 1 of Part 2 of the Schedule at a speed exceeding 10 miles per hour when a restriction is identified as applying to that length of road, or a part or parts of that length of road, by means of a traffic sign prescribed in Diagram 670 of the Traffic Signs Regulations 2002.

Exemptions

6. No prohibition imposed by this Order applies to vehicles being used in an emergency for fire brigade, ambulance, police or coastguard purposes or a vehicle while being used for carrying out the works.

7. No speed restriction imposed by this Order applies to vehicles falling within regulation 3(4) of the Road Traffic Exemptions (Special Forces) (Variation and Amendment) Regulations 2011(c) when used in accordance with regulation 3(5) of those Regulations.

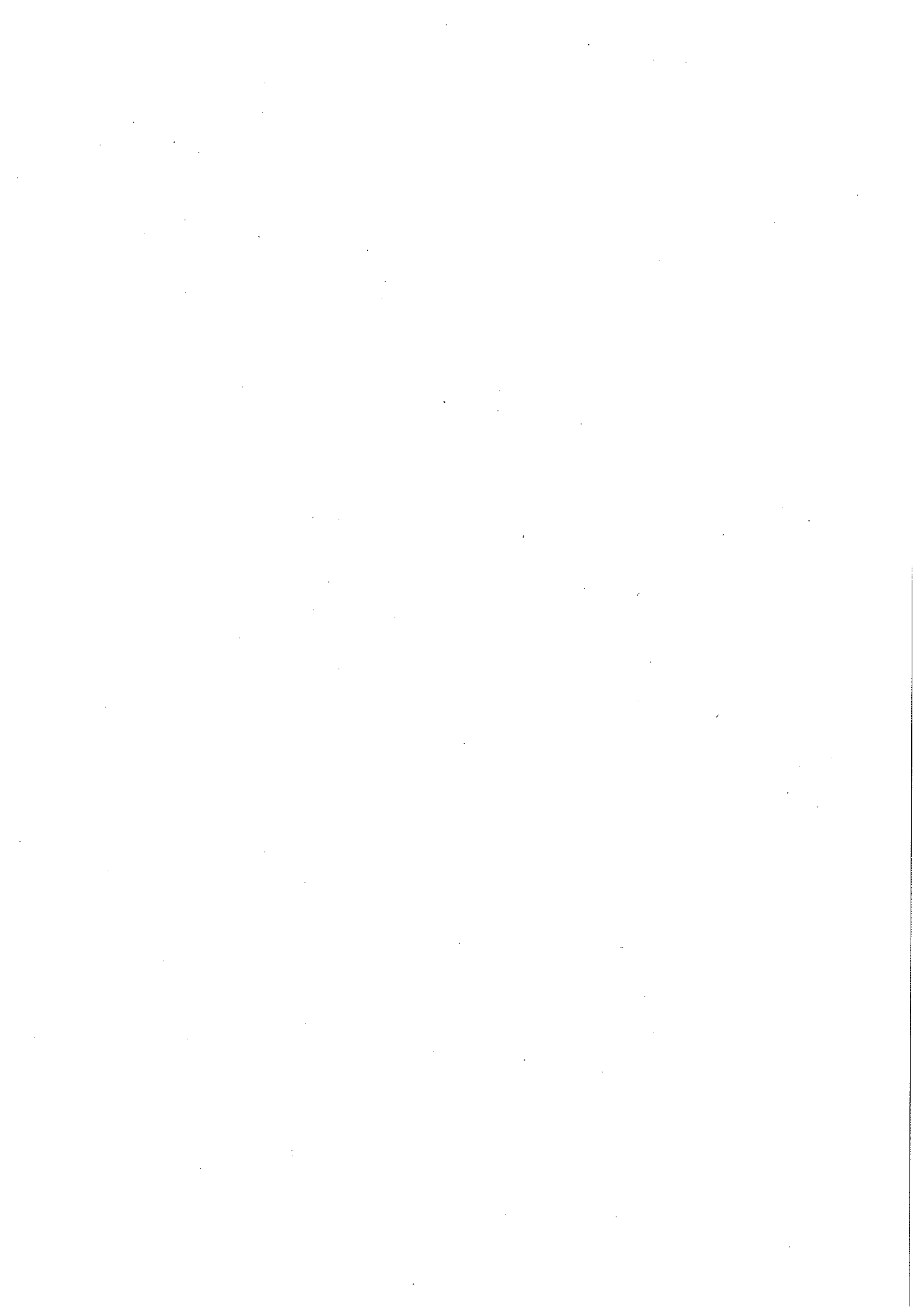
A member of the staff of the Scottish Ministers

Buchanan House,
Glasgow
16th February 2015

(a) Part 1 of S.I. 2002/3113.

(b) Section 140 was amended by the Road Traffic (Consequential Provisions) Act 1988 (c.54), Schedule 3, paragraph 25(9).

(c) S.I. 2011/935.



SCHEDULE

Articles 3, 4 and 5

SPECIFIED LENGTHS OF ROAD

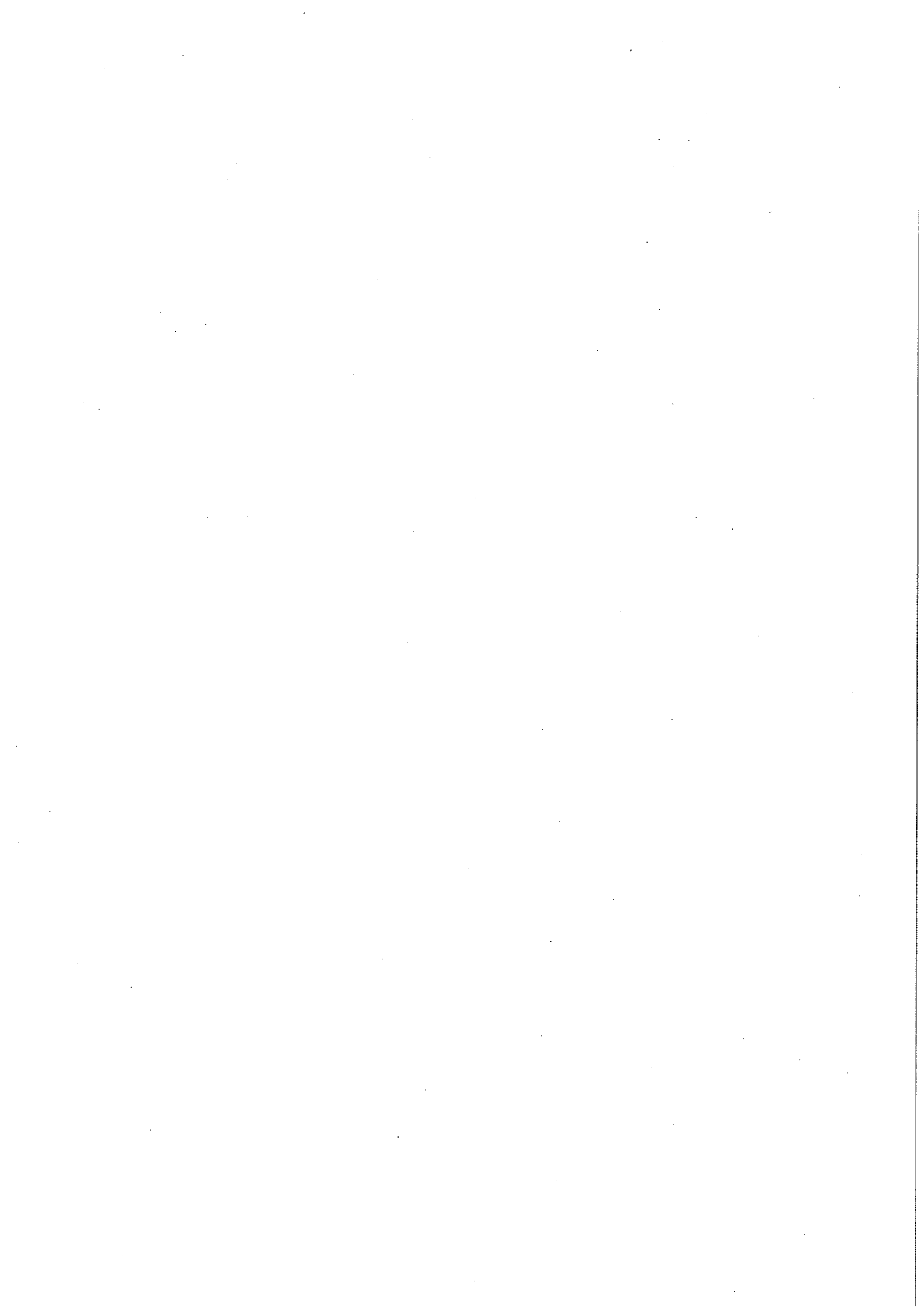
PART 1

<i>1</i>	<i>2</i>
Specified lengths of road	Speed restriction (miles per hour)
1. That length of the M9/A9 Edinburgh – Stirling – Thurso Trunk Road being the northbound and southbound carriageways from Inveralmond Roundabout, Perth northwards to a point 600 metres or thereby north of the B9099 overbridge Luncarty, a distance of 3.83 kilometres or thereby.	50
2. That length of the M9/A9 Edinburgh – Stirling – Thurso Trunk Road being the northbound and southbound carriageways from its junction with the A924 Kirkmichael Road, south of Pitlochry southwards to a point 720 metres or thereby south of its junction with the A827 Aberfeldy Road at Ballinluig, a distance of 5.89 kilometres or thereby.	50
3. That length of the M9/A9 Edinburgh – Stirling – Thurso Trunk Road being the northbound and southbound carriageways from a point 3.7 kilometres or thereby south of the A822 Amulree Road at Dunkeld southwards for a distance of 2.86 kilometres or thereby.	50
4. That length of the M9/A9 Edinburgh – Stirling – Thurso Trunk Road being the northbound and southbound carriageways from a point 1.8 kilometres or thereby north of the northern A924 Junction at Pitlochry northwards to a point 3.3 kilometres or thereby south of its junction with the B8079 Blair Atholl Road by Aldclune, a distance of 2.67 kilometres or thereby.	50
5. That length of the M9/A9 Edinburgh – Stirling – Thurso Trunk Road being the northbound and southbound carriageways from a point 15.5 kilometres or thereby north of its junction with the A95 Granish – Keith Trunk Road at Granish, northwards to a point 350 metres or thereby south of the northernmost junction to the unclassified road to Findhorn Bridge, south of Tomatin, a distance of 5.34 kilometres or thereby.	50
6. That length of the M9/A9 Edinburgh – Stirling – Thurso Trunk Road being the northbound and southbound carriageways from its junction with the A82 Dalnottar – Inverness Trunk Road at Longman Roundabout in Inverness, northwards to its junction with the A835/A893 Tore – Ullapool Trunk Road at Tore Roundabout, in Tore, a distance of 9.78 kilometres or thereby.	50
7. That length of the M9/A9 Edinburgh – Stirling – Thurso Trunk Road being the northbound and southbound carriageways from the junction with the A82 Dalnottar – Inverness Trunk Road at Longman Roundabout, Inverness, southwards to a point 4.8 kilometres or thereby south of the northernmost junction with the B9154 Moy Road, a distance of 15.1 kilometres or thereby.	50

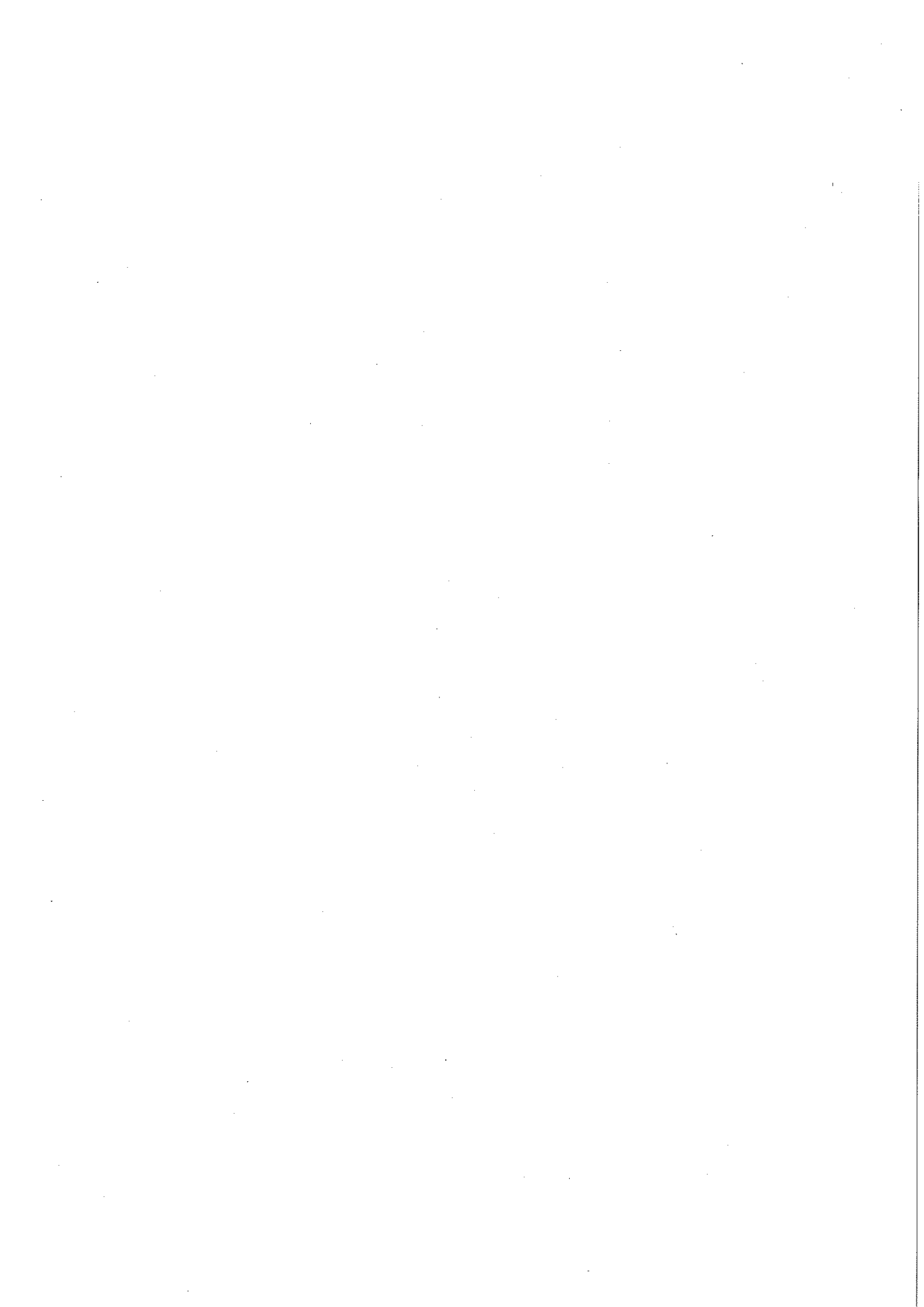


PART 2

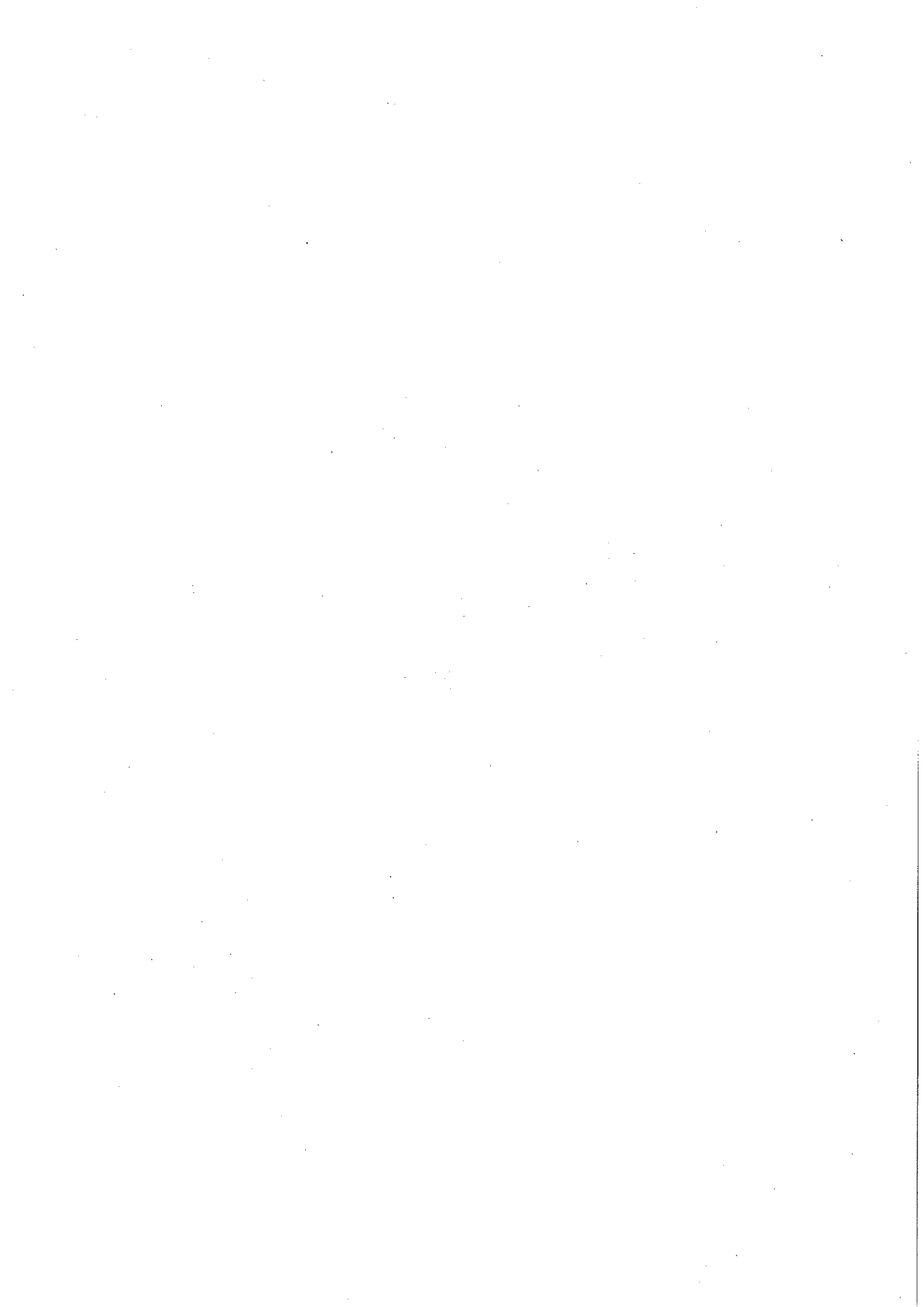
<i>1</i>	<i>2</i>
Specified lengths of road	Speed restriction (miles per hour)
8. That length of the A82 Dalnottar – Inverness Trunk Road from its junction with the A83 Tarbet – Lochgilphead - Campbeltown Trunk Road at Tarbet, northwards to a point 524 metres or thereby southeast of The Pulpit Rock Monument, a distance of 10.5 kilometres or thereby.	30
9. That length of the A82 Dalnottar – Inverness Trunk Road from a point 245 metres or thereby southeast of the access Stuckendroin Farm to a point 1670 metres or thereby south of the A85 Perth – Lochearnhead Trunk Road at Crainlarich, a distance of 13.2 kilometres or thereby.	30
10. That length of the A82 Dalnottar – Inverness Trunk Road from its junction with the A831 at Drumnadrochit southwards to the unclassified access road leading to Ardochy House south of Fort Augustus, a distance of 30.96 kilometres or thereby.	30
11. That length of the A828 Connel – South Ballachulish Trunk Road from its junction with the A82 Dalnottar – Inverness Trunk Road at South Ballachulish, southwards to its junction with the unclassified road to North Shian at Appin, a distance of 23.5 kilometres or thereby.	30
12. That length of the A828 Connel – South Ballachulish Trunk Road from its junction with the A85 Tyndrum – Oban Trunk Road at Connel, northwards to its junction with the unclassified road to North Shian at Appin, a distance of 20.09 kilometres or thereby.	30
13. That length of the A83 Tarbet – Lochgilphead - Campbeltown Trunk Road from its junction with the A819 Dalmally Road at Inveraray, eastwards to its junction with the A815 Dunoon Road by Cairndow, a distance of 17.53 kilometres or thereby.	30
14. That length of the A83 Tarbet – Lochgilphead – Campbeltown Trunk Road from its junction with the A816 Oban Road at Lochgilphead, eastwards to its junction with the unclassified road to Minard Castle, south of Minard, a distance of 19.8 kilometres or thereby.	30
15. That length of the A83 Tarbet – Lochgilphead – Campbeltown Trunk Road from its junction with the B8024 Glenralloch Road, north of Tarbert, southwards to its termination at Campbeltown Ferry Terminal, a distance of 63.2 kilometres or thereby	30
16. That length of the A830 Fort William – Mallaig Trunk Road from its junction with the A861 Strontian Road at Lochailort, eastwards to its junction with the A861 Strontian Road at Drumsallie, a distance of 22.57 kilometres or thereby.	30
17. That length of the A835/A893 Tore – Ullapool Trunk Road from its junction with the A834 Dingwall Road at Contin, westwards to its junction with the A832 Achanalt Road at Gorstan, a distance of 10.76 kilometres or thereby.	30
18. That length of the A84/A85 Stirling – Crianlarich Trunk Road from its junction with the A85 Perth – Lochearnhead Trunk Road at Lochearnhead, southwards to its junction with the A821 Brig O’Turk Road at Kilmahog, a distance of 20.16 kilometres or thereby.	30
19. That length of the A85 Perth – Lochearnhead Trunk Road from its junction with the A822 Muthill Road at Crieff, westwards to the junction with the A84/A85 Stirling – Crianlarich Trunk Road at Lochearnhead, a distance of 30.9 kilometres or thereby.	30



<i>1</i>	<i>2</i>
Specified lengths of road	Speed restriction (miles per hour)
20. That length of the A85 Tyndrum – Oban Trunk from its junction with the A819 Inveraray Road west of Dalmally, westwards to its junction with the B845 at Taynult, a distance of 17.6 kilometres or thereby.	30
21. That length of the A86 Spean Bridge – Kingussie Trunk Road from the easternmost junction with the road to Tulloch Station east of Roy Bridge, eastwards to its junction with the unclassified road to Aberarder, a distance of 15.92 kilometres or thereby.	30
22. That length of the A87 Invergarry – Kyle of Lochalsh – Borve – Uig Trunk Road from its junction with the A887 Invermoriston – Moriston Trunk Road at Bun Loyne, westwards to its junction with Cluanie Lodge, a distance of 14.54 kilometres or thereby.	30
23. That length of the A87 Invergarry – Kyle of Lochalsh – Borve – Uig Trunk Road from the Kyleakin Roundabout, Isle of Skye, westwards to its junction with the B8083 Road at Broadford, a distance of 11.63 kilometres or thereby.	30
24. That length of the A87 Invergarry – Kyle of Lochalsh – Borve – Uig Trunk Road from its junction with the A850 Dunvegan Road by Borve, northwards to its termination at the King Edward Pier in Uig, a distance of 19.51 kilometres or thereby.	30
25. That length of the A887 Invermoriston – Moriston Trunk Road from its junction with the A82 Dalnottar – Inverness Trunk Road at Invermoriston, westwards to its junction with the A87 Invergarry – Kyle of Lochalsh – Borve – Uig Trunk Road at Bun Loyne, a distance of 24.26 kilometres or thereby.	30
26. That length of the A889 Dalwhinnie – Laggan Bridge Trunk Road from its junction with the M9/A9 Edinburgh – Stirling – Thurso Trunk Road at Dalwhinnie, northwards to its junction with the A86 Spean Bridge – Kingussie Trunk Road at Drumgask Farm by Laggan, a distance of 13.82 kilometres or thereby.	30
27. That length of the M9/A9 Edinburgh – Stirling – Thurso Trunk Road northbound and southbound carriageways from Inveralmond Roundabout, Perth northwards to a point 600 metres or thereby north of the B9099 overbridge Luncarty, a distance of 3.83 kilometres or thereby.	30
28. That length of the M9/A9 Edinburgh – Stirling – Thurso Trunk Road being the northbound combined on and off slip road leading to and from the B9099 at Luncarty, a distance of 325 metres or thereby.	30
29. That length of the M9/A9 Edinburgh – Stirling – Thurso Trunk Road being the southbound on slip road leading from the B9099 at Luncarty, a distance of 500 metres or thereby.	30
30. That length of the M9/A9 Edinburgh – Stirling – Thurso Trunk Road from a point 3.7 kilometres or thereby south of its junction with the A822 Amulree Road at Birnam, northwards to a point 720 metres or thereby south of its junction with the A827 at Ballinluig, a distance of 15.8 kilometres or thereby.	30
31. That length of the M9/A9 Edinburgh – Stirling – Thurso Trunk Road being the northbound off slip road leading to the A827 at Ballinluig, a distance of 550 metres or thereby.	30
32. That length of the M9/A9 Edinburgh – Stirling – Thurso Trunk Road being the northbound on slip road leading from the A827 at Ballinluig, a distance of 450 metres or thereby.	30



<i>1</i>	<i>2</i>
Specified lengths of road	Speed restriction (miles per hour)
33. That length of the M9/A9 Edinburgh – Stirling – Thurso Trunk Road being the southbound on slip road leading from the A827 at Ballinluig, a distance of 380 metres or thereby.	30
34. That length of the M9/A9 Edinburgh – Stirling – Thurso Trunk Road being the southbound off slip road leading to the A827 at Ballinluig, a distance of 300 metres or thereby.	30
35. That length of the M9/A9 Edinburgh – Stirling – Thurso Trunk Road being the northbound off slip road leading to the A924 south of Pitlochry, a distance of 750 metres or thereby.	30
36. That length of the M9/A9 Edinburgh – Stirling – Thurso Trunk Road being the southbound on slip road leading from the A924 south of Pitlochry, a distance of 500 metres or thereby.	30
37. That length of the M9/A9 Edinburgh – Stirling – Thurso Trunk Road being the northbound and southbound carriageways from a point 1.8 kilometres or thereby north of the northern A924 Junction at Pitlochry northwards to a point 3.3 kilometres or thereby south of its junction with the B8079 Blair Atholl Road by Aldclune, a distance of 2.67 kilometres or thereby.	30
38. That length of the M9/A9 Edinburgh – Stirling – Thurso Trunk Road from its junction with the A889 Dalwhinnie – Laggan Bridge Trunk Road near Dalwhinnie, southwards to its junction with the unclassified road to Dalnaspidal Lodge, a distance of 10.52 kilometres or thereby.	30
39. That length of the M9/A9 Edinburgh – Stirling – Thurso Trunk Road from its junction with the A95 Granish – Keith Trunk Road at Granish, northwards to a point 370 metres or thereby south of its junction with the unclassified road to Tomatin, north of Slochd Summit, a distance of 15.5 kilometres or thereby.	30
40. That length of the M9/A9 Edinburgh – Stirling – Thurso Trunk Road being the northbound and southbound carriageways from the junction with the A82 Dalnottar – Inverness Trunk Road at Longman Roundabout, Inverness, southwards to a point 4.8 kilometres or thereby south of the northernmost junction with the B9154 Moy Road, a distance of 15.1 kilometres or thereby.	30
41. That length of the M9/A9 Edinburgh – Stirling – Thurso Trunk Road from its junction with the A836 Bonar Bridge Road south of Dornoch Bridge, southwards to its junction with the B817 at Alness, a distance of 25.6 kilometres or thereby.	30
42. That length of the M9/A9 Edinburgh – Stirling – Thurso Trunk Road from its junction with the A897 Dunrobin Street at Helmsdale, southwards to its junction with the Golf Course Road, Brora, a distance of 17.97 kilometres or thereby.	30
43. That length of the M9/A9 Edinburgh – Stirling – Thurso Trunk Road from its junction with the A99 Latheron – Wick Trunk Road northwards to its junction with the B870 at Mybster, a distance of 20.4 kilometres or thereby.	30



PRESS NOTICE

THE SCOTTISH MINISTERS give notice that they have made the following Orders temporarily prohibiting traffic, temporarily prohibiting overtaking and temporarily restricting the speed of vehicles on the lengths of road identified in this Notice.

The Orders, which are required because works are being or are proposed to be executed on or near the lengths of road, will be in operation from **1st March 2015 until 1st June 2015, unless otherwise stated, but will only have effect in relation to such part or parts of the lengths of road when indicated by the appropriate traffic signs.** The provisions relating to temporary prohibitions of traffic do not apply to vehicles being used in an emergency for fire brigade, ambulance, police or coastguard purposes or vehicles used for carrying out the works. There are no exemptions for those vehicles in respect of temporary prohibitions of overtaking and temporary speed restrictions unless otherwise provided by law. The provisions relating to temporary speed restrictions do not apply to vehicles being used in the service of the Special Forces.

Where the closure of a carriageway on a dual carriageway road is involved the alternative route for traffic will be the adjacent carriageway by means of contraflow working. **Other alternative route or routes for traffic in relation to the lengths of road affected by the Orders during a prohibition will be signposted.** Detailed descriptions of the alternative routes and the works being carried out can also be obtained at the following offices:

For the North West Unit and North East Unit: BEAR Scotland Ltd, Inveralmond Road, Perth PH1 3TW. Telephone: 01738 448 600.

For the South East Unit: Amey Highways, 6a Dryden Road, Bilston Glen Industrial Estate, Loanhead, Edinburgh EH20 9LZ. Telephone 0800 521 660.

For the South West Unit: Scotland TransServ, Polmadie House, 150 Polmadie Road, Glasgow G5 0HD. Telephone: 0141 218 3800.

For South West entry 58, Autolink Concessionaires (M6) PLC, M6 DBFO, Nethercleuch, Lockerbie, DG11 2SQ. Telephone: 08457 966 666.

A copy of the Orders and this Notice will be available on the Transport Scotland website at :

<http://www.transportscotland.gov.uk/road/policy/legal-requirements/road-and-traffic-orders/TROs>

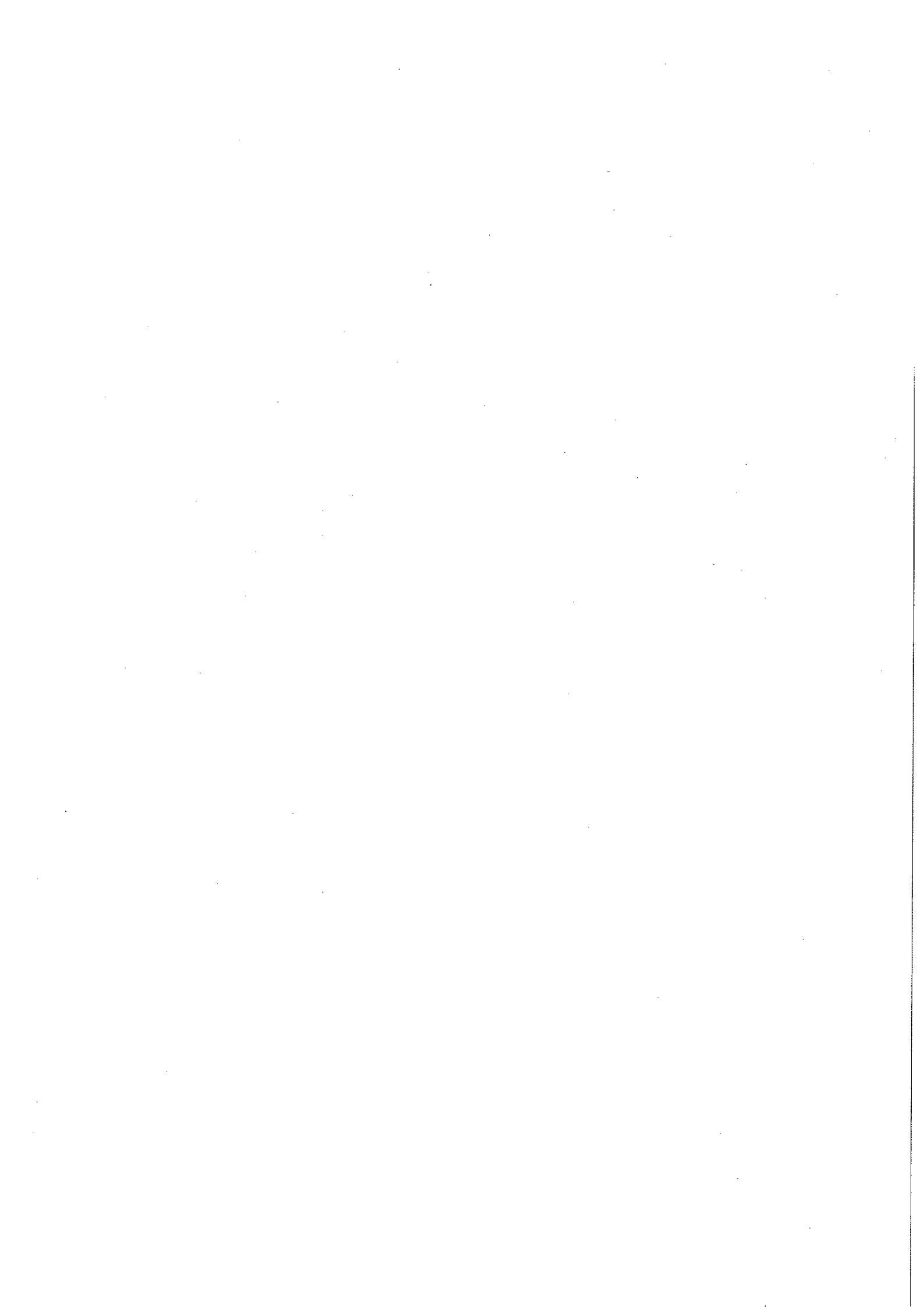
For information about roadworks on motorways and trunk roads visit www.trafficscotland.org.uk

G REID

Members of the Staff of the Scottish Ministers

J J MORAN

Transport Scotland
Buchanan House
58 Port Dundas Road
Glasgow
G4 0HF



PRESS NOTICE

THE NORTH WEST SCOTLAND TRUNK ROADS (TEMPORARY PROHIBITIONS OF TRAFFIC AND OVERTAKING AND TEMPORARY SPEED RESTRICTIONS) (No.2) ORDER 2015

The following lengths of the A82 Dalnottar – Inverness Trunk Road:

1. From its junction with the A83 Tarbet – Lochgilphead – Campbeltown Trunk Road at Tarbet, northwards to a point 524 metres or thereby southeast of The Pulpit Rock Monument, a distance of 10.5 kilometres or thereby.
2. From a point 245 metres or thereby southeast of the access Stuckendroin Farm to a point 1670 metres or thereby south of the A85 Perth – Locheearnhead Trunk Road at Crainlarich, a distance of 13.2 kilometres or thereby.
3. From its junction with the A831 at Drumnadrochit southwards to the unclassified access road leading to Ardochy House south of Fort Augustus, a distance of 30.96 kilometres or thereby.

Prohibitions on use and overtaking and a 30 mph speed restriction and 10 mph when there is convoy working.

The following lengths of the A828 Connel – South Ballachulish Trunk Road:

4. From its junction with the A82 Dalnottar – Inverness Trunk Road at South Ballachulish, southwards to its junction with the unclassified road to North Shian at Appin, a distance of 23.5 kilometres or thereby.
5. From its junction with the A85 Tyndrum – Oban Trunk Road at Connel, northwards to its junction with the unclassified road to North Shian at Appin, a distance of 20.09 kilometres or thereby.

Prohibitions on use and overtaking and a 30 mph speed restriction and 10 mph when there is convoy working.

The following lengths of the A83 Tarbet – Lochgilphead - Campbeltown Trunk Road:

6. From its junction with the A819 Dalmally Road at Inveraray, eastwards to its junction with the A815 Dunoon Road by Cairndow, a distance of 17.53 kilometres or thereby.
7. From its junction with the A816 Oban Road at Lochgilphead, eastwards to its junction with the unclassified road to Minard Castle, south of Minard, a distance of 19.8 kilometres or thereby.
8. From its junction with the B8024 Glenralloch Road, north of Tarbert, southwards to its termination at Campbeltown Ferry Terminal, a distance of 63.2 kilometres or thereby.

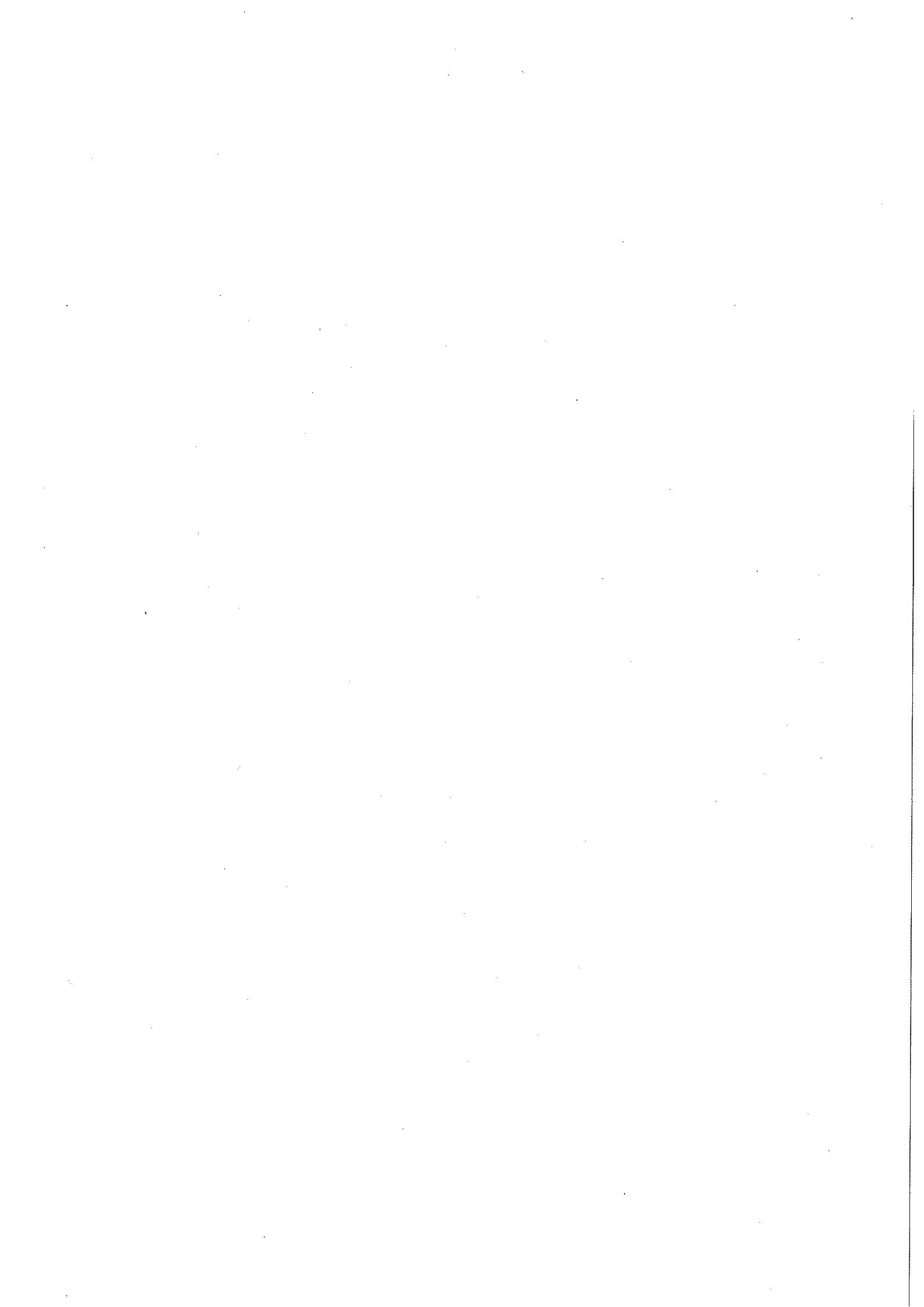
Prohibitions on use and overtaking and a 30 mph speed restriction and 10 mph when there is convoy working.

The following length of the A830 Fort William - Mallaig Trunk Road:

9. From its junction with the A861 Strontian Road at Lochailort, eastwards to its junction with the A861 Strontian Road at Drumsallie, a distance of 22.57 kilometres or thereby.

Prohibitions on use and overtaking and a 30 mph speed restriction and 10 mph when there is convoy working.

The following length of the A835/A893 Tore – Ullapool Trunk Road:



10. From its junction with the A834 Dingwall Road at Contin, westwards to its junction with the A832 Achanalt Road at Gorstan, a distance of 10.76 kilometres or thereby.

Prohibitions on use and overtaking and a 30 mph speed restriction and 10 mph when there is convoy working.

The following length of the A84/A85 Stirling – Crianlarich Trunk Road:

11. From its junction with the A85 Perth – Lochearnhead Trunk Road at Lochearnhead, southwards to its junction with the A821 Brig O’Turk Road at Kilmahog, a distance of 20.16 kilometres or thereby.

Prohibitions on use and overtaking and a 30 mph speed restriction and 10 mph when there is convoy working.

The following length of the A85 Perth – Lochearnhead Trunk Road:

12. From its junction with the A822 Muthill Road at Crieff, westwards to the junction with the A84/A85 Stirling – Crianlarich Trunk Road at Lochearnhead, a distance of 30.9 kilometres or thereby.

Prohibitions on use and overtaking and a 30 mph speed restriction and 10 mph when there is convoy working.

The following length of the A85 Tyndrum - Oban Trunk Road:

13. From its junction with the A819 Inveraray Road, west of Dalmally, westwards to its junction with the B845 at Taynuilt, a distance of 17.6 kilometres or thereby.

Prohibitions on use and overtaking and a 30 mph speed restriction and 10 mph when there is convoy working.

The following length of the A86 Spean Bridge - Kingussie Trunk Road:

14.(21) From the easternmost junction with the road to Tulloch Station east of Roy Bridge, eastwards to its junction with the unclassified road to Aberarder, a distance of 15.92 kilometres or thereby.

Prohibitions on use and overtaking and a 30 mph speed restriction and 10 mph when there is convoy working.

The following lengths of the A87 Invergarry – Kyle of Lochalsh – Borve – Uig Trunk Road:

15. From its junction with the A887 Invermoriston – Moriston Trunk Road at Bun Loyne, westwards to its junction with Cluanie Lodge, a distance of 14.54 kilometres or thereby.

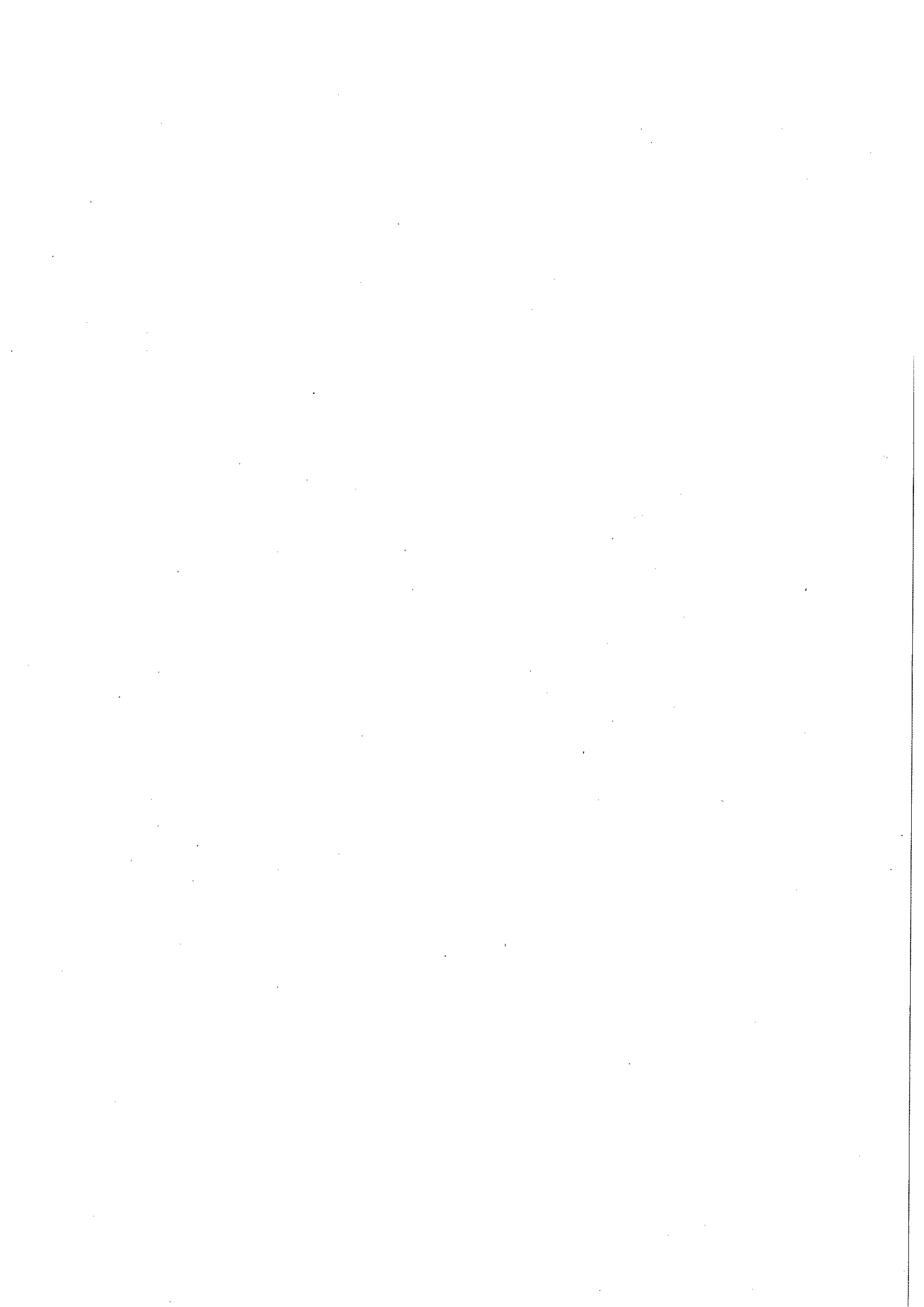
16. From the Kyleakin Roundabout, Isle of Skye, westwards to its junction with the B8083 Road at Broadford, a distance of 11.63 kilometres or thereby.

17. From its junction with the A850 Dunvegan Road by Borve, northwards to its termination at the King Edward Pier in Uig, a distance of 19.51 kilometres or thereby.

Prohibitions on use and overtaking and a 30 mph speed restriction and 10 mph when there is convoy working.

The following length of the A887 Invermoriston – Moriston Trunk Road:

18. From its junction with the A82 Dalnottar – Inverness Trunk Road at Invermoriston, westwards to its junction with the A87 Invergarry – Kyle of Lochalsh – Borve – Uig Trunk Road at Bun Loyne, a distance of 24.26 kilometres or thereby.



Prohibitions on use and overtaking and a 30 mph speed restriction and 10 mph when there is convoy working.

The following length of the A889 Dalwhinnie – Laggan Bridge Trunk Road:

19. From its junction with the M9/A9 Edinburgh – Stirling – Thurso Trunk Road at Dalwhinnie, northwards to its junction with the A86 Spean Bridge – Kingussie Trunk Road at Drumgask Farm by Laggan, a distance of 13.82 kilometres or thereby.

Prohibitions on use and overtaking and a 30 mph speed restriction and 10 mph when there is convoy working.

The following lengths of the M9/A9 Edinburgh – Stirling – Thurso Trunk Road:

20. Northbound and southbound carriageways from its junction with the A924 Kirkmichael Road, south of Pitlochry southwards to a point 720 metres or thereby south of its junction with the A827 Aberfeldy Road at Ballinluig, a distance of 5.89 kilometres or thereby.

21. Northbound and southbound carriageways from a point 3.7 kilometres or thereby south of the A822 Amulree Road at Dunkeld southwards for a distance of 2.86 kilometres or thereby.

22. Northbound and southbound carriageways from a point 15.5 kilometres or thereby north of its junction with the A95 Granish – Keith Trunk Road at Granish, northwards to a point 350 metres or thereby south of the northernmost junction to the unclassified road to Findhorn Bridge, south of Tomatin, a distance of 5.34 kilometres or thereby.

23. Northbound and southbound carriageways from its junction with the A82 Dalnottar – Inverness Trunk Road at Longman Roundabout in Inverness, northwards to its junction with the A835/A893 Tore – Ullapool Trunk Road at Tore Roundabout, in Tore, a distance of 9.78 kilometres or thereby.

Prohibitions on use and overtaking and a 50 mph speed restriction.

The following lengths of the M9/A9 Edinburgh – Stirling – Thurso Trunk Road:

24. Northbound and southbound carriageways from Inveralmond Roundabout, Perth northwards to a point 600 metres or thereby north of the B9099 overbridge Luncarty, a distance of 3.83 kilometres or thereby.

25. Northbound and southbound carriageways from a point 1.8 kilometres or thereby north of the northern A924 Junction at Pitlochry northwards to a point 3.3 kilometres or thereby south of its junction with the B8079 Blair Atholl Road by Aldclune, a distance of 2.67 kilometres or thereby.

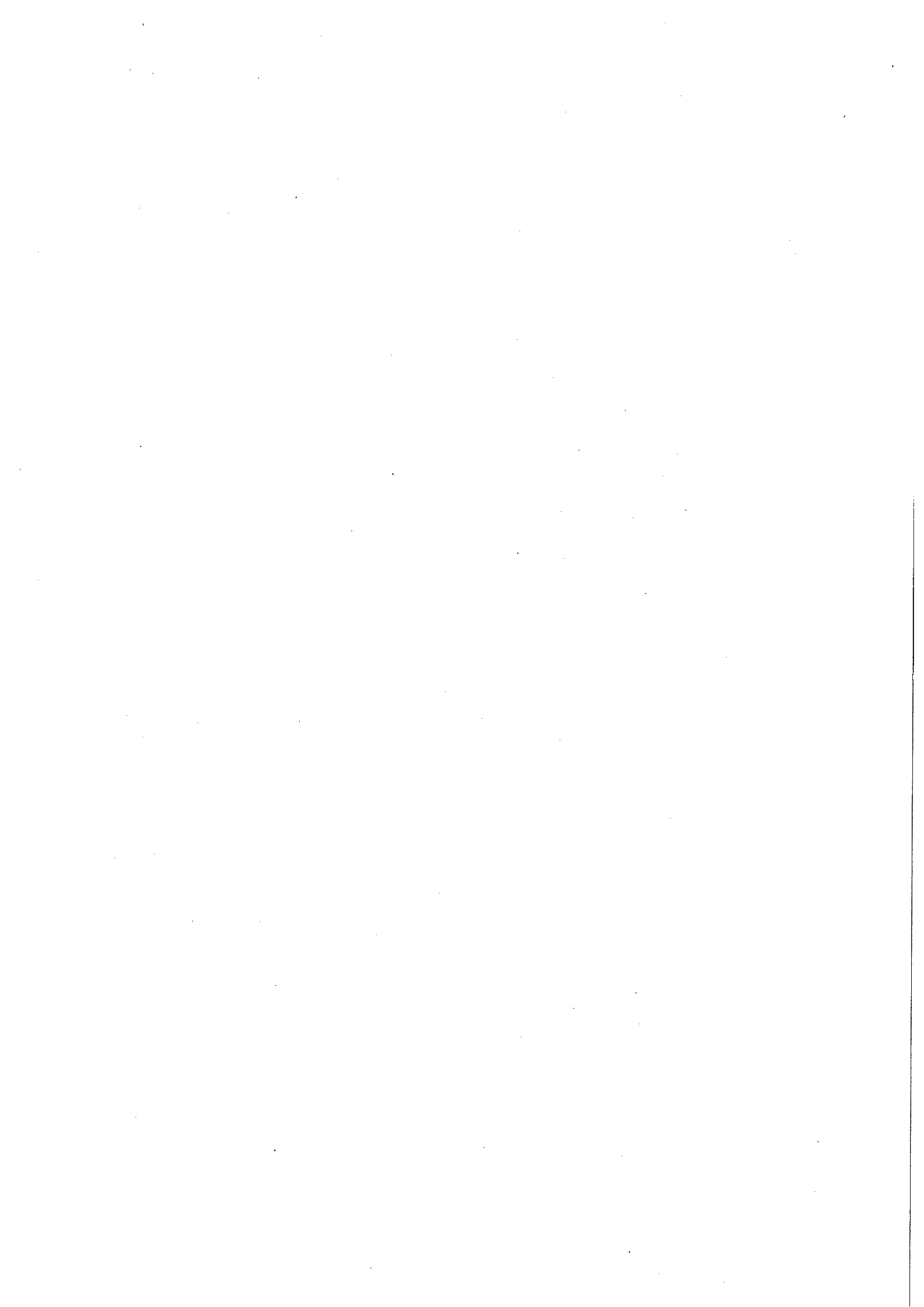
26. Northbound and southbound carriageways from the junction with the A82 Dalnottar – Inverness Trunk Road at Longman Roundabout, Inverness, southwards to a point 4.8 kilometres or thereby south of the northernmost junction with the B9154 Moy Road, a distance of 15.1 kilometres or thereby.

Prohibitions on use and overtaking and a 50 mph and a 30mph speed restriction and a 10mph speed restriction when there is convoy working.

The following lengths of the M9/A9 Edinburgh – Stirling – Thurso Trunk Road:

27. Being the northbound combined on and off slip road leading to and from the B9099 at Luncarty, a distance of 325 metres or thereby.

28. Being the southbound on slip road leading from the B9099 at Luncarty, a distance of 500 metres or thereby.



29. From a point 3.7 kilometres or thereby south of its junction with the A822 Amulree Road at Birnam, northwards to a point 720 metres or thereby south of its junction with the A827 at Ballinluig, a distance of 15.8 kilometres or thereby.
30. Being the northbound off slip road leading to the A827 at Ballinluig, a distance of 550 metres or thereby.
31. Being the northbound on slip road leading from the A827 at Ballinluig, a distance of 450 metres or thereby.
32. Being the southbound on slip road leading from the A827 at Ballinluig, a distance of 380 metres or thereby.
33. Being the southbound off slip road leading to the A827 at Ballinluig, a distance of 300 metres or thereby.
34. Being the northbound off slip road leading to the A924 south of Pitlochry, a distance of 750 metres or thereby.
35. Being the southbound on slip road leading from the A924 south of Pitlochry, a distance of 500 metres or thereby.
36. From its junction with the A889 Dalwhinnie – Laggan Bridge Trunk Road near Dalwhinnie, southwards to its junction with the unclassified road to Dalnaspidal Lodge, a distance of 10.52 kilometres or thereby.
37. From its junction with the A95 Granish – Keith Trunk Road at Granish, northwards to a point 370 metres or thereby south of its junction with the unclassified road to Tomatin, north of Slochd Summit, a distance of 15.5 kilometres or thereby.
38. From its junction with the A836 Bonar Bridge Road south of Dornoch Bridge, southwards to its junction with the B817 at Alness, a distance of 25.6 kilometres or thereby.
39. From its junction with the A897 Dunrobin Street at Helmsdale, southwards to its junction with the Golf Course Road, Brora, a distance of 17.97 kilometres or thereby.
40. From its junction with the A99 Latheron – Wick Trunk Road northwards to its junction with the B870 at Mybster, a distance of 20.4 kilometres or thereby.

Prohibitions on use and overtaking and a 30 mph speed restriction and 10 mph when there is convoy working.

