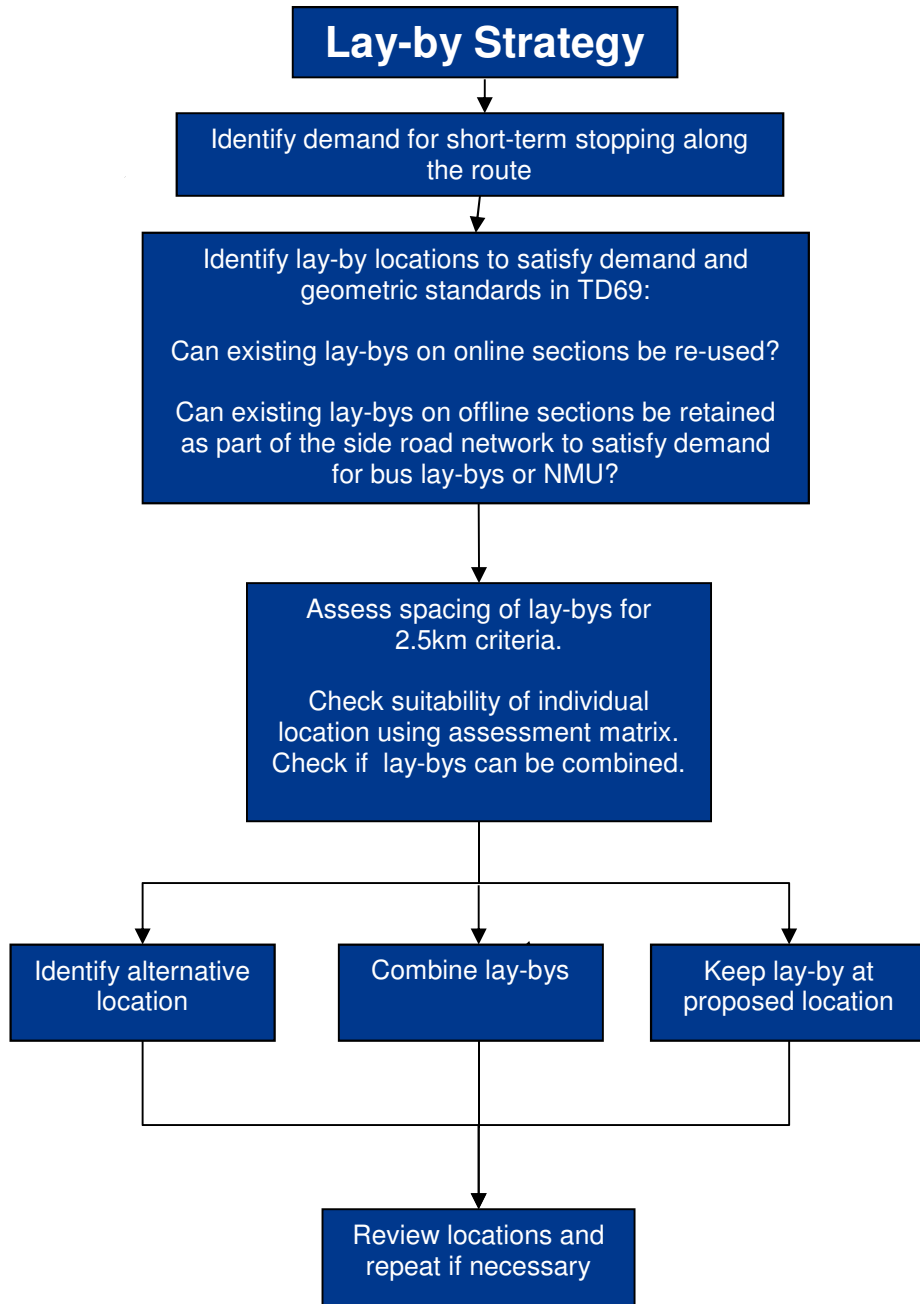


**Appendix K Lay-by Strategy**





A96 Lay-by Assessment Matrix	
Proposed Lay-by Location and Type:	
<p>The Lay-by Assessment matrix shall assess the suitability of providing a lay-by at the proposed location. The assessment shall also consider whether the proposed lay-by can be combined with another adjacent lay-by. The assessment of engineering, cost and environmental issues shall be undertaken appropriate to the level of detail available at the stage of assessment.</p>	
Engineering and Cost Issues	Assessment Comments
<b>Location of Lay-by:</b> <ul style="list-style-type: none"> <li>Check the proximity to junctions (TD69)</li> <li>Is the separation between lay-bys acceptable (between 2km and 3km)?</li> </ul>	
<b>Combining Lay-bys</b> <ul style="list-style-type: none"> <li>In combining lay-bys is a specific demand (viewpoint, NMU, resilience etc) omitted?</li> </ul>	
<b>Design Standards:</b> <ul style="list-style-type: none"> <li>Visibility</li> <li>Location within a horizontal curve</li> <li>Can Roads for All: Good Practice Guide for Roads be accommodated?</li> </ul>	
<b>Other Issues specific to location</b> Are there any other engineering issues related to the provision of a lay-by at the proposed location Including, but not limited to: <ul style="list-style-type: none"> <li>Location related cost issues</li> <li>Scheme Resilience</li> <li>NMU Access</li> </ul>	
<b>Summary</b> <ul style="list-style-type: none"> <li>Provide a summary of the key engineering and cost assessment</li> </ul>	
Environmental Issues	Assessment Comments
<b>User Demand/ Need</b> Any demand for a lay-by at the proposed location? <ul style="list-style-type: none"> <li>NMU/ Recreational/Scenic</li> <li>Bus</li> <li>Scheme Resilience</li> </ul>	
<b>Community &amp; Private Assets</b> <ul style="list-style-type: none"> <li>Consider potential impact on adjacent land use/ amenities?</li> </ul>	
<b>Landscape and Visual</b> <ul style="list-style-type: none"> <li>Consider proximity to adjacent housing or other sensitive visual receptors.</li> </ul>	
<b>Other Issues specific to location</b> Are there any other environmental issues related to the provision of a lay-by at the proposed location Including, but not limited to: <ul style="list-style-type: none"> <li>Cultural Heritage</li> <li>Road Drainage &amp; Water Environment</li> <li>Ecology</li> <li>Community &amp; Private Assets</li> </ul>	
<b>Summary</b> Provide a summary of the key environmental impacts assessment. Consider the effect of mitigation and/ or local re-siting where environmental impacts are potentially unacceptable.	
Stakeholder Consultation	Assessment Comments
<b>Stakeholder Perception</b> Description of potential reasons for need/ objection/ acceptance of particular lay-by by stakeholders	

<b>Conclusions</b>	
<b>Is a lay-by to be provided at the proposed location?</b>	