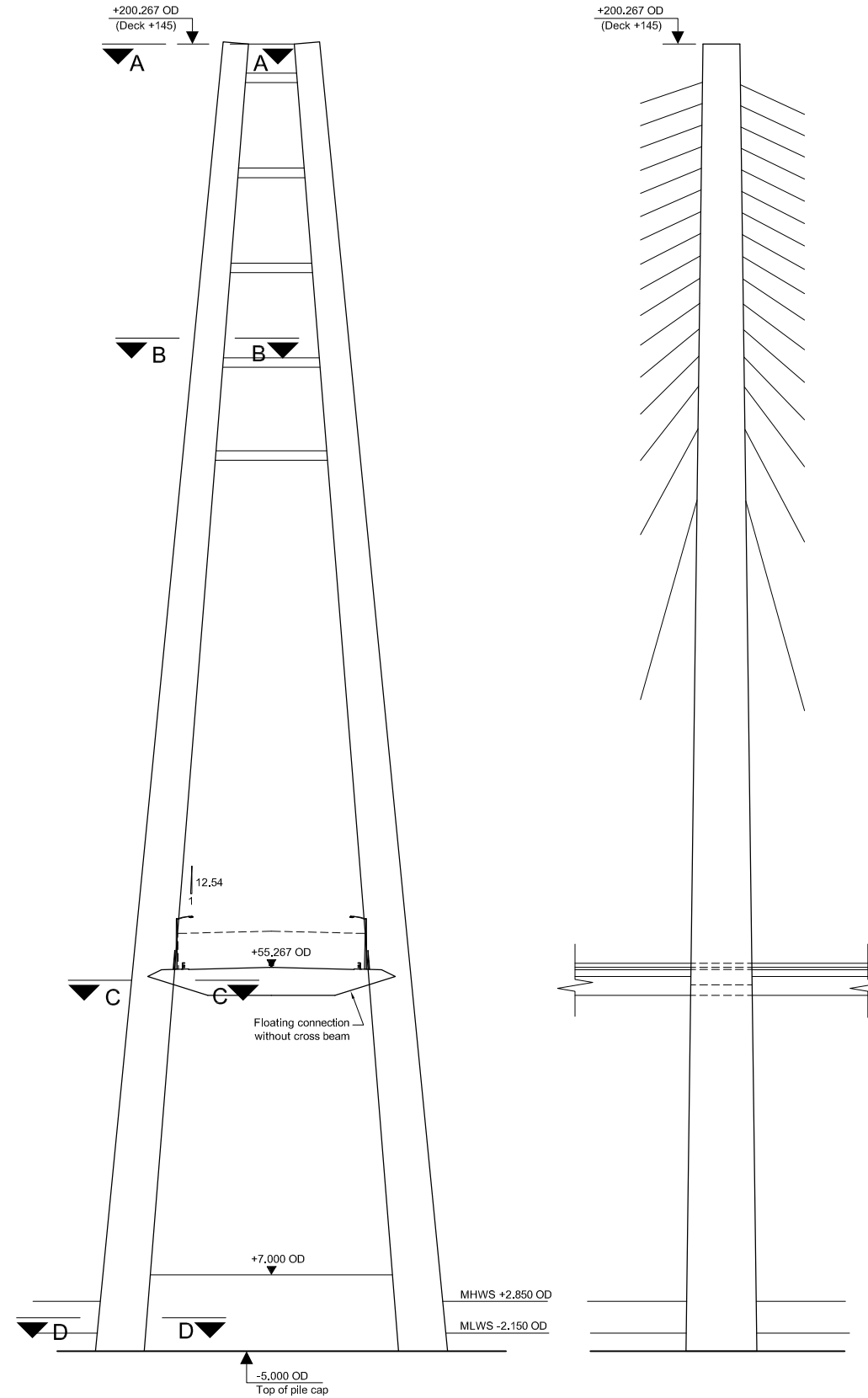


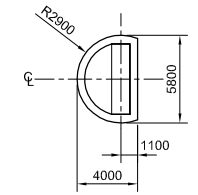
**CENTRAL TOWER (CT)**  
**(FRONT VIEW)**  
 SCALE 1 : 500

**CENTRAL TOWER (CT)**  
**(SIDE VIEW)**  
 SCALE 1 : 500

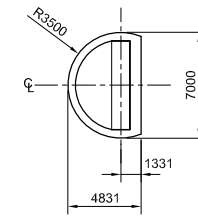


**FLANKING TOWERS (NT/ST)**  
**(FRONT VIEW)**  
 SCALE 1 : 500

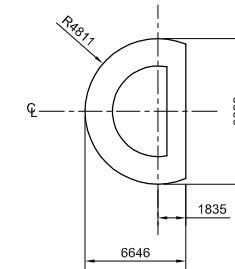
**FLANKING TOWERS (NT/ST)**  
**(SIDE VIEW)**  
 SCALE 1 : 500



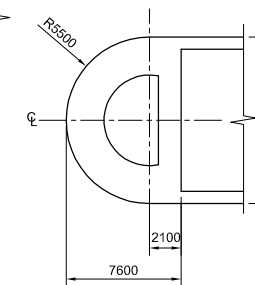
**SECTION A-A**  
 SCALE 1 : 250



**SECTION B-B**  
 SCALE 1 : 250



**SECTION C-C**  
 SCALE 1 : 250



**SECTION D-D**  
 SCALE 1 : 250

**Notes**  
 1. For details of tower foundation, see drawing FRC/C/076/D2M/421.

Rev	Rev. Date	Purpose of revision	Drawn	Checked	Reviewed	Approved
0						



**JACOBS ARUP**

**FORTH REPLACEMENT CROSSING**

**CABLE STAYED BRIDGE  
 D2M OPTION  
 H-SHAPE TOWER (H1)  
 GENERAL ARRANGEMENT**

Drawing status: **PRELIMINARY**

Scale: AS SHOWN @ A1 | DO NOT SCALE  
 Client no.: RD 001675

Drawing number: **FRC/C/076/D2M/211** | Rev: **0**

This drawing is not to be used in whole or part other than for the intended purpose and project as defined on this drawing. Refer to the contract for full terms and conditions.

Created by: JACOBS File: J:\125100\ARUP\CIVIL\FRC-C-076-D2M-211.dwg Date: Nov 05, 2008 - 5:42pm Plotted by: sunnyjeung