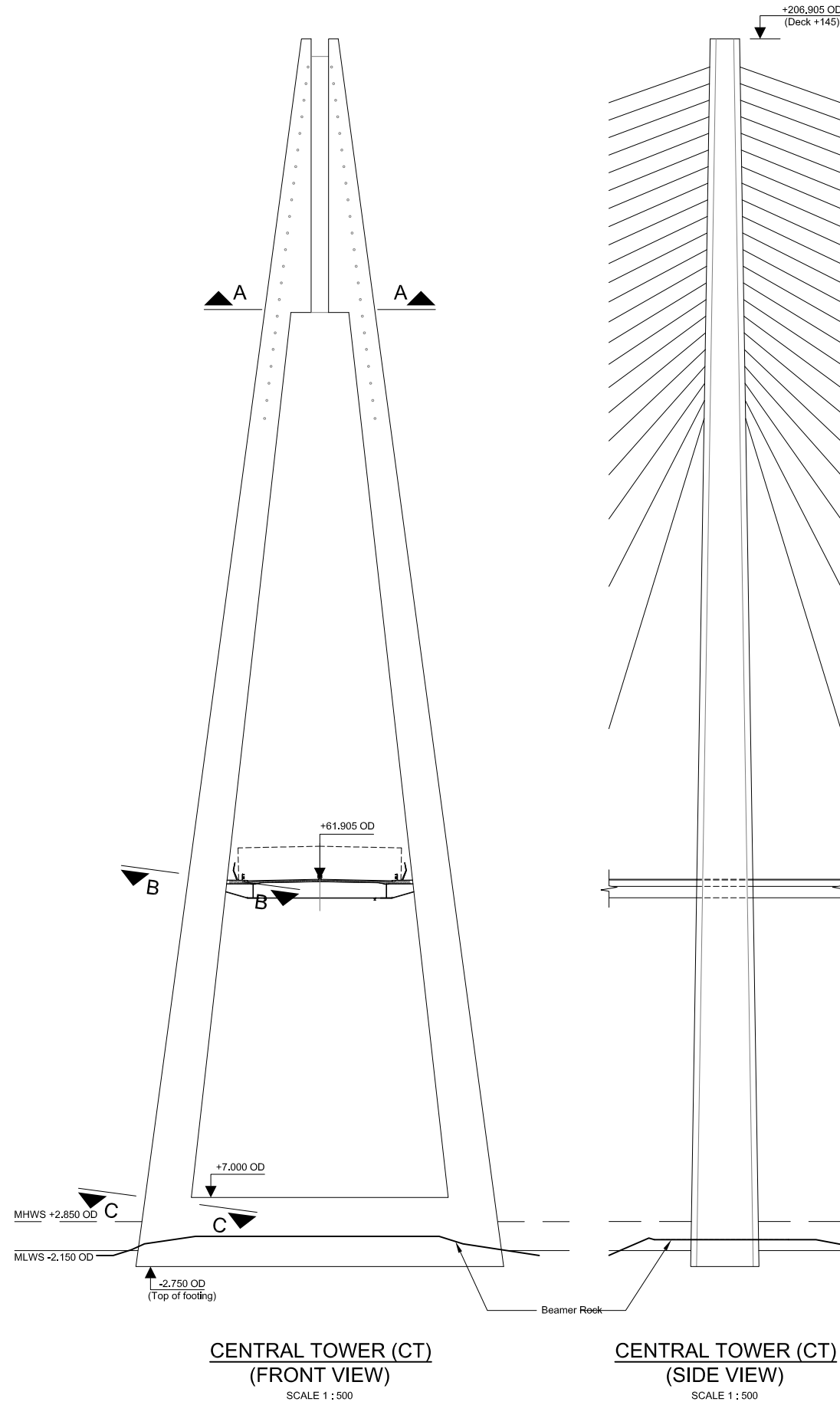


Created by: FLINT & NEILL PARTNERSHIP File: H:\eng\1215\CAD\Working\02M\FRC-C-076-D2M-261.dwg Date: Nov 11, 2008 - 11:28am Plotted by: kmr

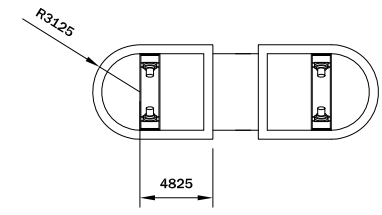


**CENTRAL TOWER (CT)**  
**(FRONT VIEW)**  
 SCALE 1 : 500

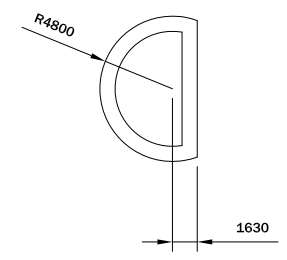
**CENTRAL TOWER (CT)**  
**(SIDE VIEW)**  
 SCALE 1 : 500

**FLANKING TOWERS (NT/ST)**  
**(FRONT VIEW)**  
 SCALE 1 : 500

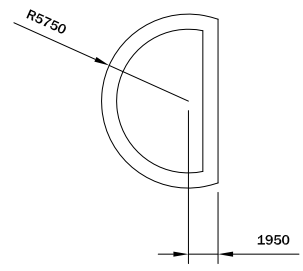
**FLANKING TOWERS (NT/ST)**  
**(SIDE VIEW)**  
 SCALE 1 : 500



**SECTION A - A**  
 SCALE 1:250



**SECTION B - B**  
 SCALE 1:250



**SECTION C - C**  
 SCALE 1:250

- Notes**
1. Tower arrangement shown for 650m main span.
  2. For details of tower foundation see drawing FRC/C/052/D2M/???

Rev	Rev. Date	Purpose of revision	Drawn	Checked	Reviewed	Approved
0						



**JACOBS ARUP**

Project  
**FORTH REPLACEMENT CROSSING**

Drawing title  
**CABLE STAYED BRIDGE  
 D2M OPTION  
 A FRAME TOWER  
 GENERAL ARRANGEMENT**

Drawing status  
**PRELIMINARY**

Scale  
 1:500 @ A1  
 DO NOT SCALE

Client no.  
 RD 001675

Drawing number  
**FRC/C/076/D2M/261**

Rev  
**0**

This drawing is not to be used in whole or part other than for the intended purpose and project as defined on this drawing. Refer to the contract for full terms and conditions.