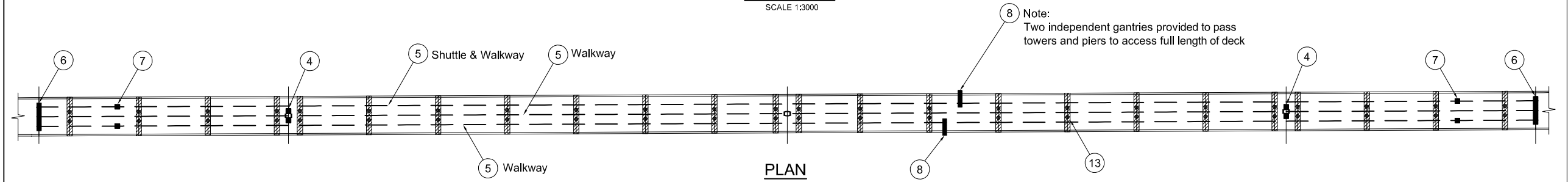
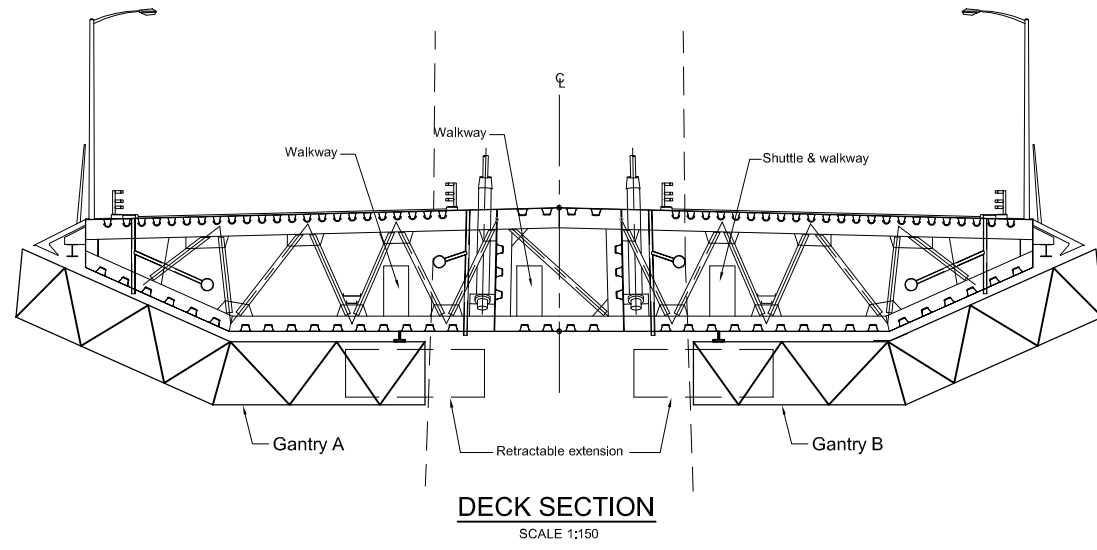


ELEVATION
 SCALE 1:3000

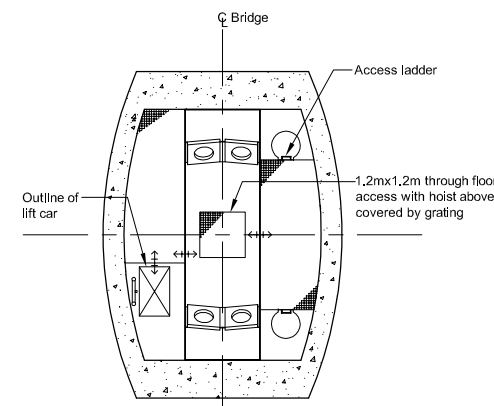


PLAN
 SCALE 1:3000

- ① Access door at deck level.
- ② Lift and emergency stairs/ladders from deck level to tower top with intermediate stops at stay cable anchorages.
- ③ Access to equipment including hidden tower top maintenance unit.
- ④ Permanent platform for access to lateral bearing.
- ⑤ Access walkways and shuttle in deck interior for entire length of bridge.
- ⑥ Access to expansion joint and bearings at end piers.
- ⑦ Access to bearings at piers S1/N1.
- ⑧ Travelling inspection and maintenance gantry for steel deck.
- ⑨ Access doors from tower to gantry.
- ⑩ Stay cable maintenance gantry.
- ⑪ Access platform suspended from derrick on tower top.
- ⑫ Access door at tower base level.
- ⑬ Cross passage access with access hatches at deck level and transverse walkway at approximately 90m centres. Additional access holes in internal web to be provided between cross passages.
- ⑭ Stairs /ladders access from base level to deck level.



DECK SECTION
 SCALE 1:150



TOWER SECTION
 SCALE 1:100

Created by: J:\ACOBS File: J:\125100\ARUP\CIVIL\FRC-C-076-D2M-501.dwg Date: Nov 05, 2008 - 5:47pm Plotted by: sunny.leung

Rev	Rev. Date	Purpose of revision	Drawn	Checked	Reviewed	Approved
0						

Client



TRANSPORT SCOTLAND
 An agency of The Scottish Government

JACOBS ARUP

Project
FORTH REPLACEMENT CROSSING

Drawing title
CABLE STAYED BRIDGE D2M OPTION ACCESS FACILITIES CONCEPT LAYOUT

Drawing status
PRELIMINARY

Scale AS SHOWN DO NOT SCALE

Client no. RD 001675

Drawing number **FRC/C/076/D2M/501** Rev **0**

This drawing is not to be used in whole or part other than for the intended purpose and project as defined on this drawing. Refer to the contract for full terms and conditions.