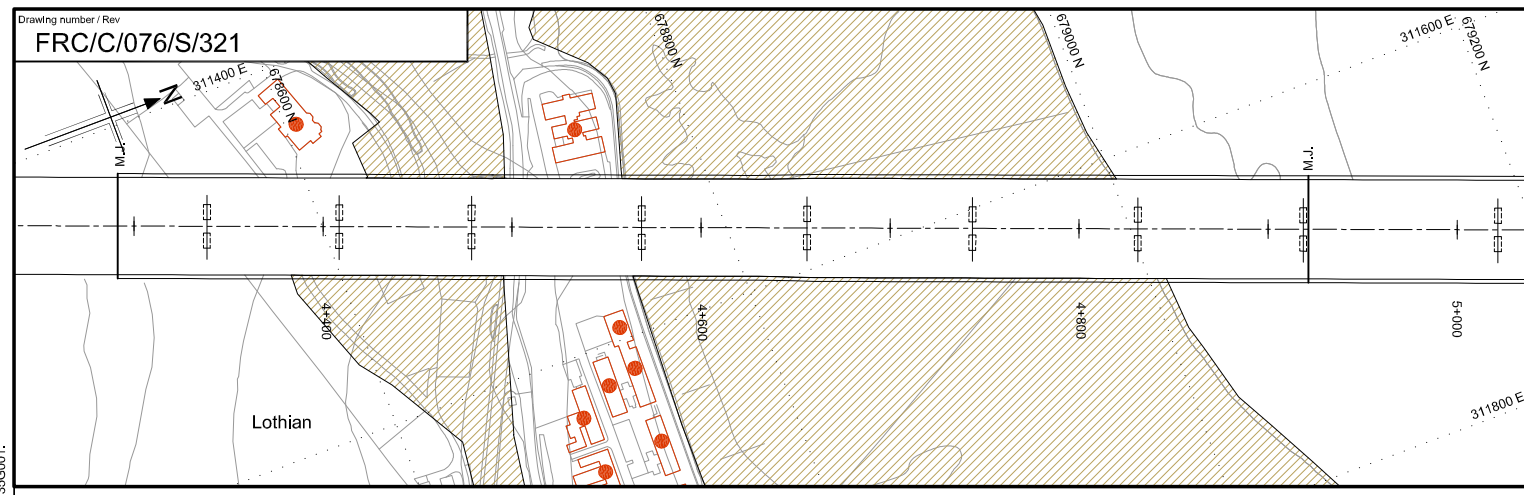
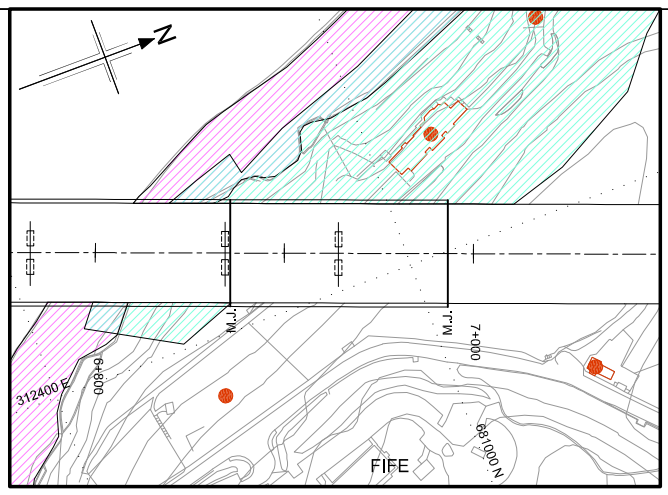


This map is reproduced from Ordnance Survey material with the permission of Ordnance Survey on behalf of Her Majesty's Stationery Office © Crown copyright. Unauthorised reproduction infringes Crown copyright and may lead to prosecution or civil proceedings. Licence GD 031135G001.  
 Created by: JACOBS File: J:\125\001\ARUP\CIVIL\FRC-C-076-S-321.dwg Date: Jul 24, 2008 - 2:56pm Plotted by: sunny/leung

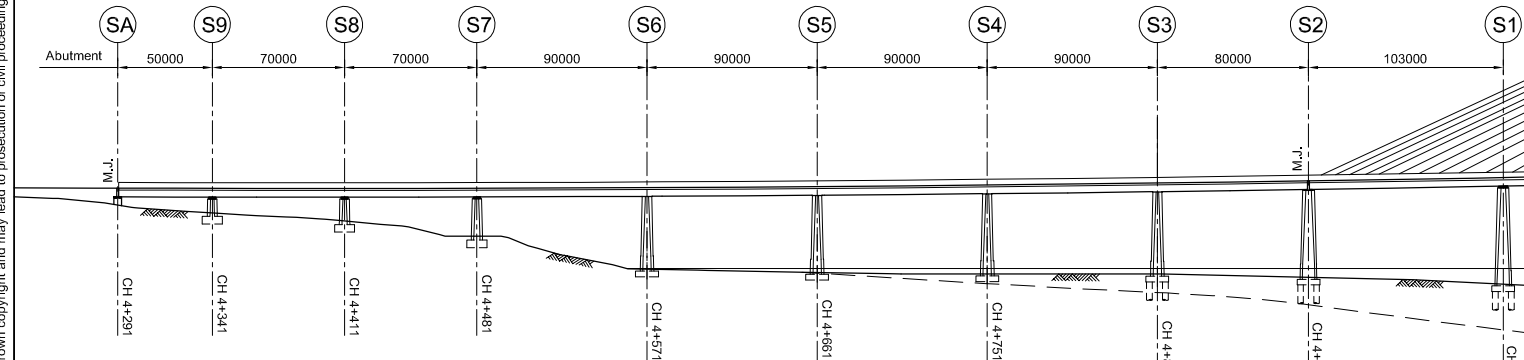


**SOUTH APPROACH PLAN**  
(1:2000)

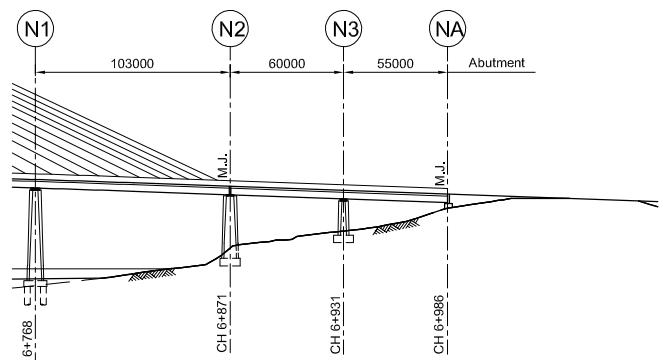


**NORTH APPROACH PLAN**  
(1:2000)

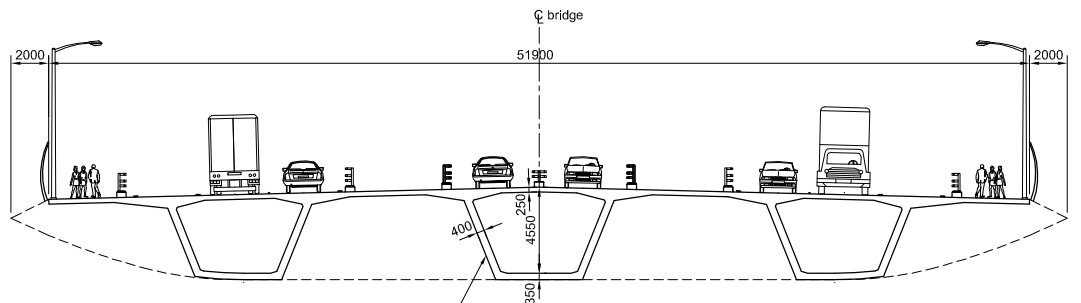
- Notes**
- Only environmentally sensitive areas which are directly below the alignment are shown on this plan.
- Legend**
- Site of importance for nature conservation in Edinburgh
  - Special protection areas (Scotland) and sites of special scientific interest (Scotland)
  - Semi-natural woodland inventory
  - Listed buildings (Scotland)
  - Movement joint



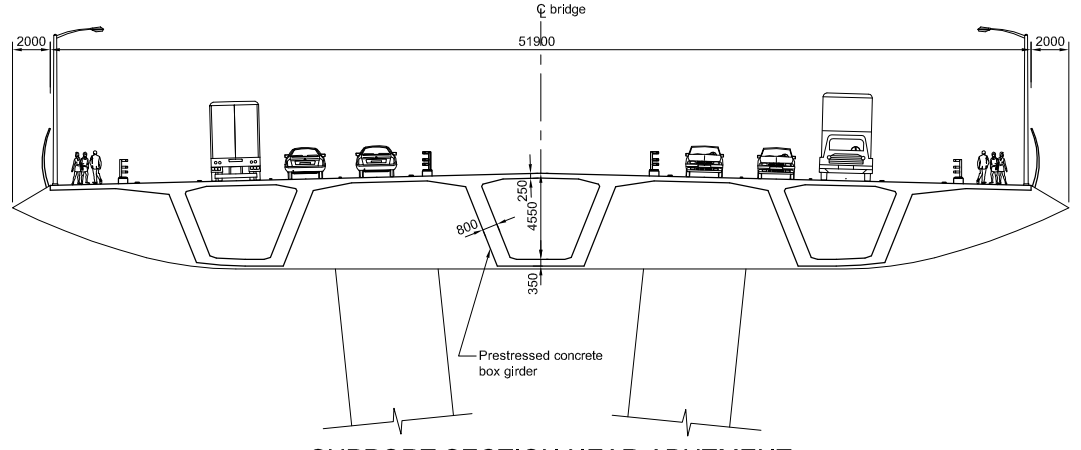
**SOUTH APPROACH ELEVATION**  
(1:2000)



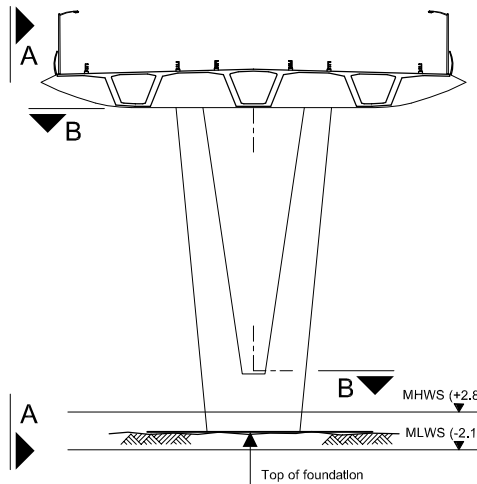
**NORTH APPROACH ELEVATION**  
(1:2000)



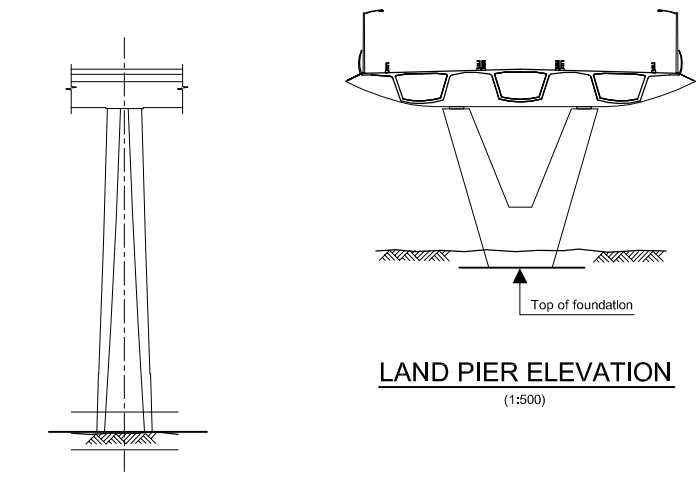
**SECTION NEAR CABLE-STAYED BRIDGE**  
(1:200)



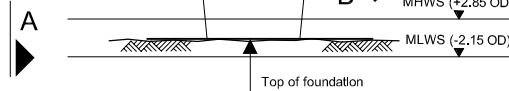
**SUPPORT SECTION NEAR ABUTMENT**  
(1:200)



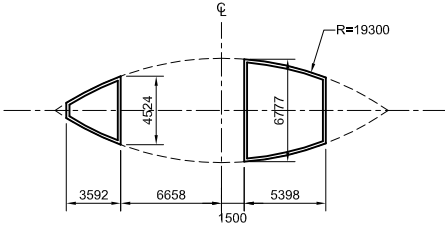
**MARINE PIER ELEVATION**  
(1:500)



**LAND PIER ELEVATION**  
(1:500)



**ELEVATION A-A**  
SCALE 1:500



**SECTION B-B**  
SCALE 1:250

Rev	Rev. Date	Purpose of revision	SL	DX	MC	NH
1	23 July 2008	Revised deck section				

Client:



TRANSPORT SCOTLAND  
An agency of The Scottish Government

**JACOBS ARUP**

Project: **FORTH REPLACEMENT CROSSING**

Drawing title: **APPROACH SPANS  
THREE CORRIDOR OPTION  
CONCRETE DECK  
GENERAL ARRANGEMENT**

Drawing status: **PRELIMINARY**

Scale: AS SHOWN DO NOT SCALE

Client no. RD 001675

Drawing number: **FRC/C/076/S/321** Rev: **1**

This drawing is not to be used in whole or part other than for the intended purpose and project as defined on this drawing. Refer to the contract for full terms and conditions.