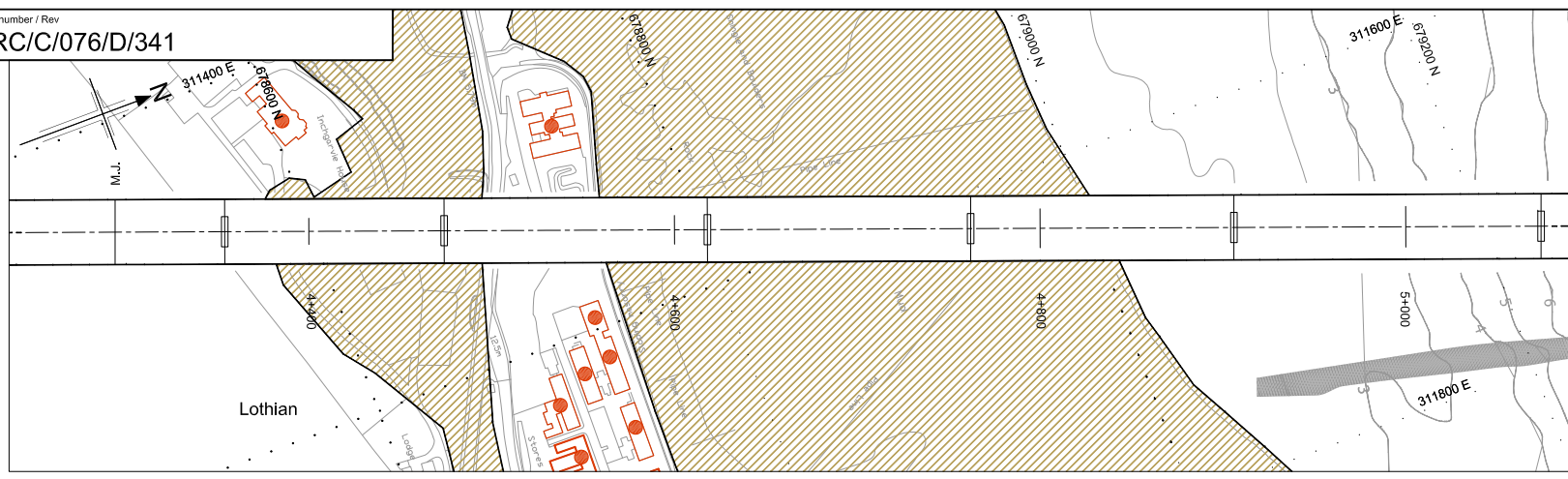
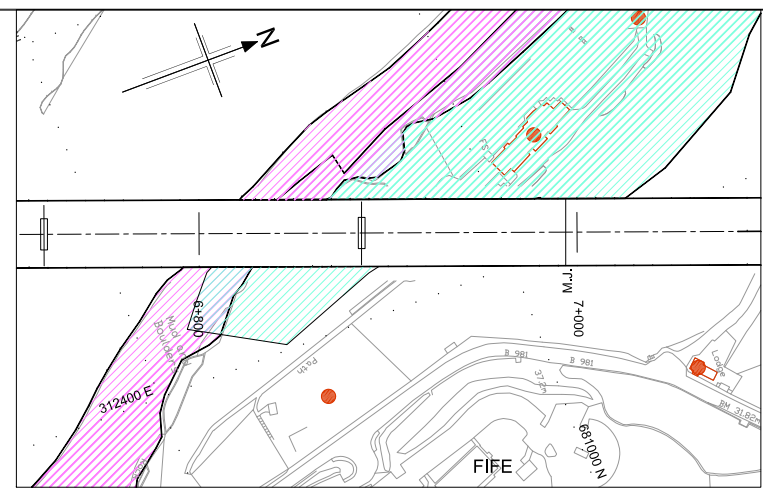


This map is reproduced from Ordnance Survey material with the permission of Ordnance Survey on behalf of the Controller of Her Majesty's Stationery Office.
 © Crown copyright. Unauthorised reproduction infringes Crown copyright and may lead to prosecution or civil proceedings. Licence GD 031135/001.
 Created by: FLINT AND NEILL PARTNERSHIP File: H:\eng\1215\CAD\Working\FN\FRC-C-076-D-341.dwg Date: Jun 24, 2008 - 4:50pm Plotted by: kmr

Drawing number / Rev
FRC/C/076/D/341

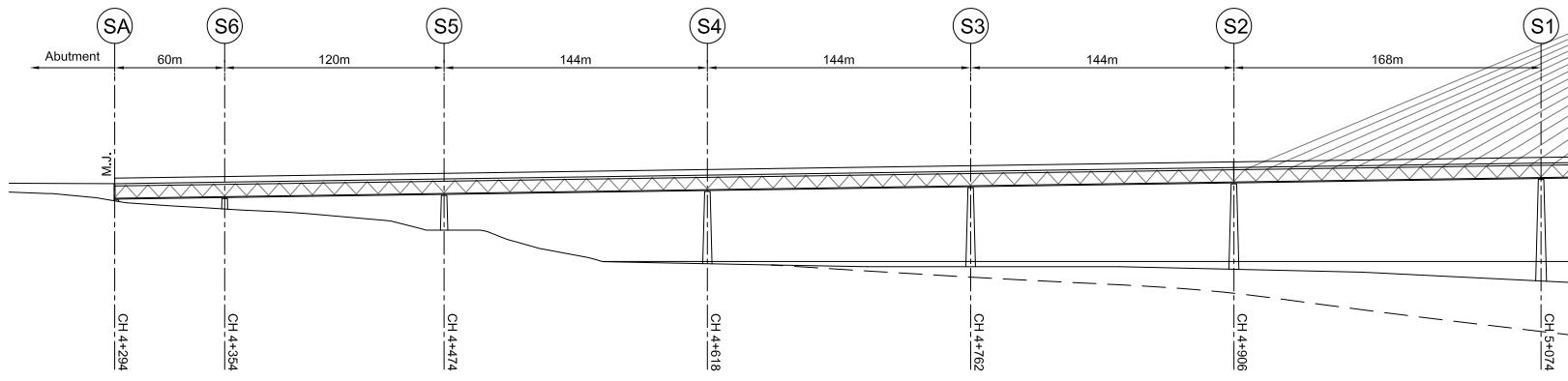


SOUTH APPROACH PLAN
 SCALE 1:2000

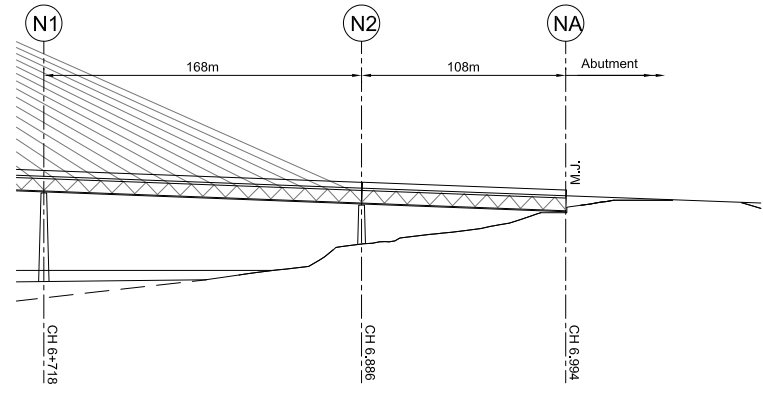


NORTH APPROACH PLAN
 SCALE 1:2000

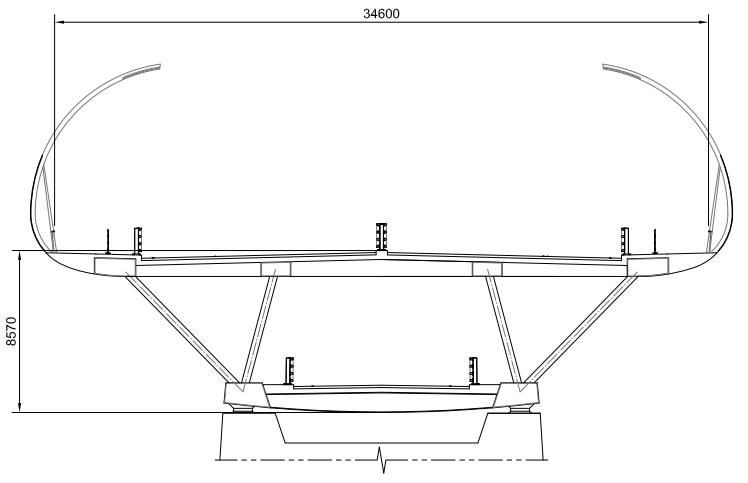
- Notes**
- Only environmentally sensitive areas which are directly below the alignment are shown on this plan.
- Legend**
- Site of Importance for nature conservation in Edinburgh
 - Special protection areas (Scotland) and sites of special scientific interest (Scotland)
 - Semi-natural woodland inventory
 - Listed buildings (Scotland)
 - M.J. Movement joint



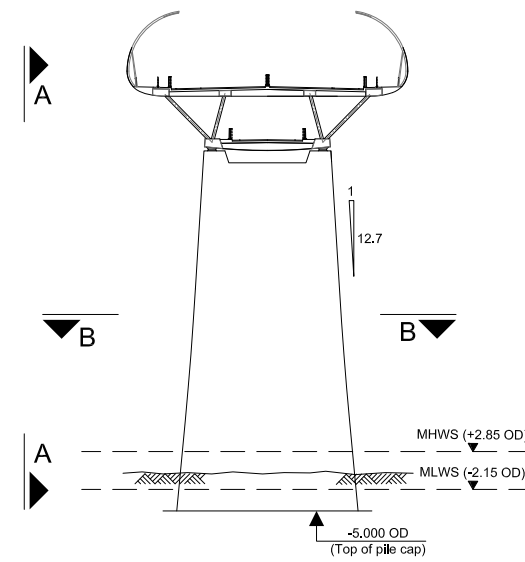
SOUTH APPROACH ELEVATION
 SCALE 1:2000



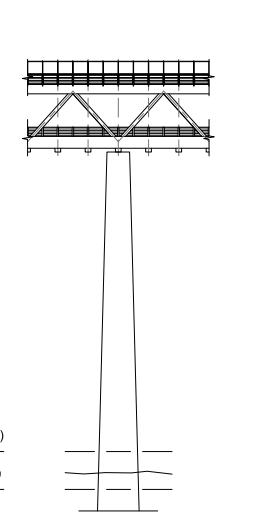
NORTH APPROACH ELEVATION
 SCALE 1:2000



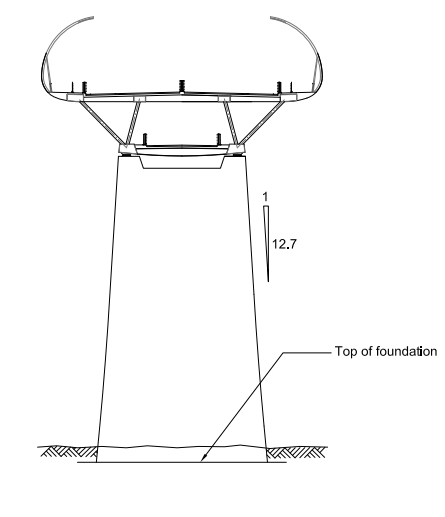
TYPICAL SECTION
 SCALE 1:200



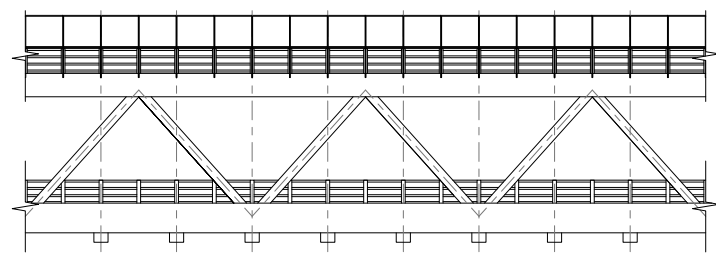
MARINE PIER ELEVATION
 SCALE 1:500



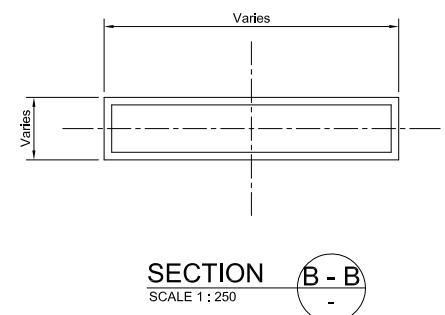
ELEVATION A - A
 SCALE 1:500



LAND PIER ELEVATION
 SCALE 1:500



TYPICAL ELEVATION
 SCALE 1:200



SECTION B - B
 SCALE 1:250

0						
0						
Rev	Rev. Date	Purpose of revision	Drawn	Checked	Reviewed	Approved

Client



TRANSPORT SCOTLAND

An agency of The Scottish Government

JACOBS ARUP

Project
FORTH REPLACEMENT CROSSING

Drawing title
**APPROACH SPANS
 DOUBLE LEVEL OPTION
 WARREN TRUSS OPTION
 GENERAL ARRANGEMENT**

Drawing status
PRELIMINARY

Scale
 AS SHOWN DO NOT SCALE

Client no.
 RD 001675

Drawing number
FRC/C/076/D/341

Rev
0

This drawing is not to be used in whole or part other than for the intended purpose and project as defined on this drawing. Refer to the contract for full terms and conditions.