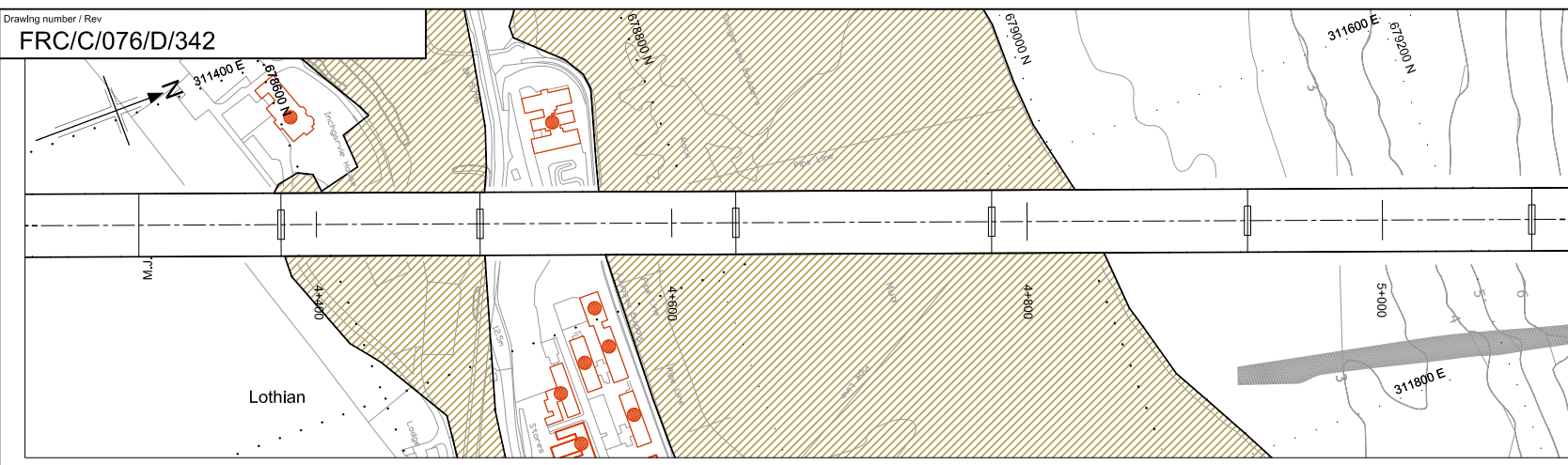
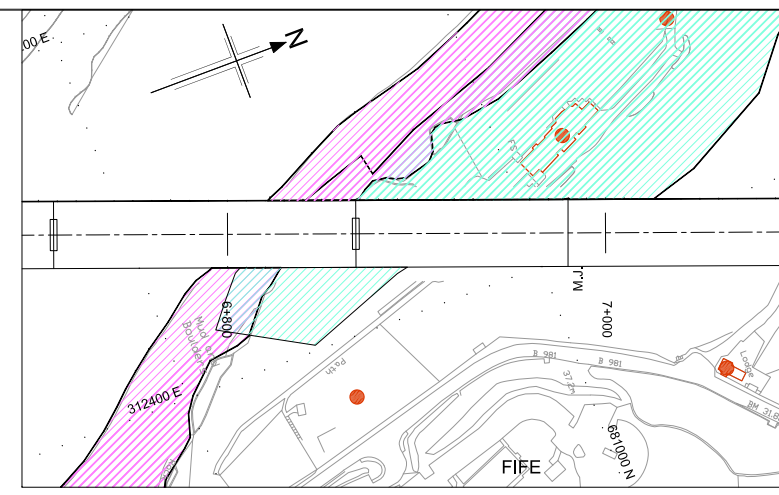


This map is reproduced from Ordnance Survey material with the permission of Ordnance Survey on behalf of the Controller of Her Majesty's Stationery Office. © Crown copyright. Unauthorised reproduction infringes Crown copyright and may lead to prosecution or civil proceedings. Licence GD 031135G001.  
 File: H:\eng\1215\CAD\Working\FN\FRC-C-076-D-342.dwg Date: Jun 24, 2008 - 4:50pm Plotted by: kmr  
 Created by: FLINT AND NEILL PARTNERSHIP

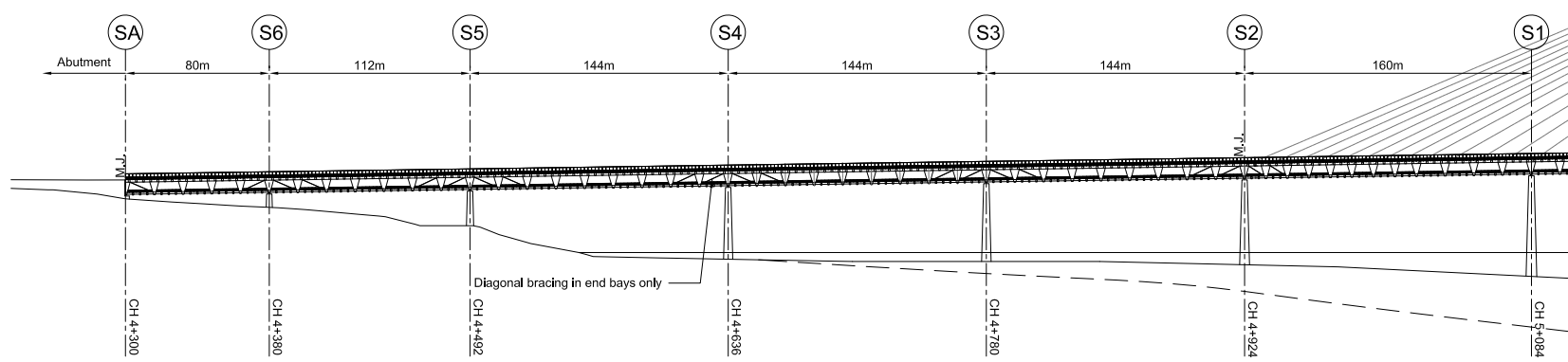


**SOUTH APPROACH PLAN**  
SCALE 1:2000

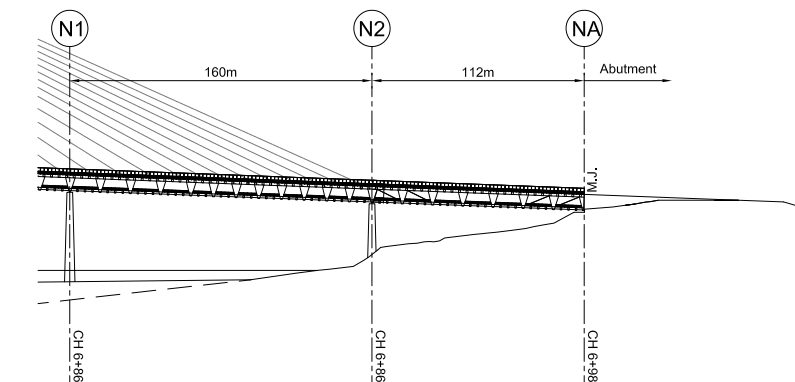


**NORTH APPROACH PLAN**  
SCALE 1:2000

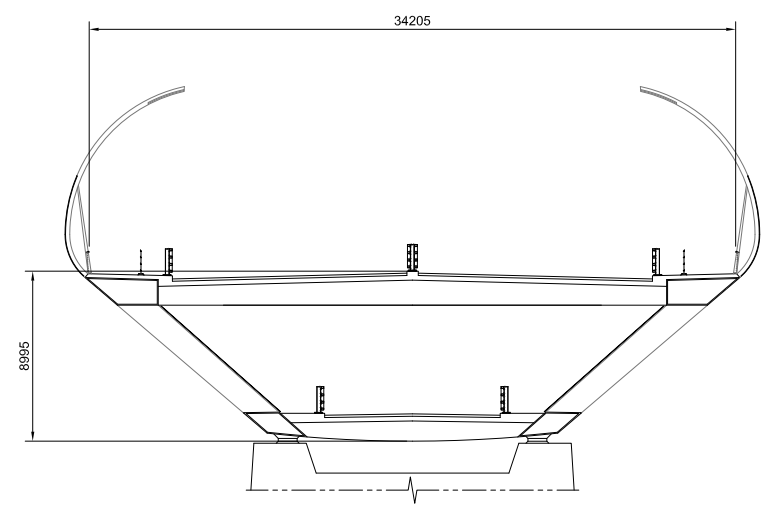
- Notes**
- Only environmentally sensitive areas which are directly below the alignment are shown on this plan.
- Legend**
- Site of Importance for nature conservation in Edinburgh
  - Special protection areas (Scotland) and sites of special scientific interest (Scotland)
  - Semi-natural woodland inventory
  - Listed buildings (Scotland)
  - M.J. Movement joint



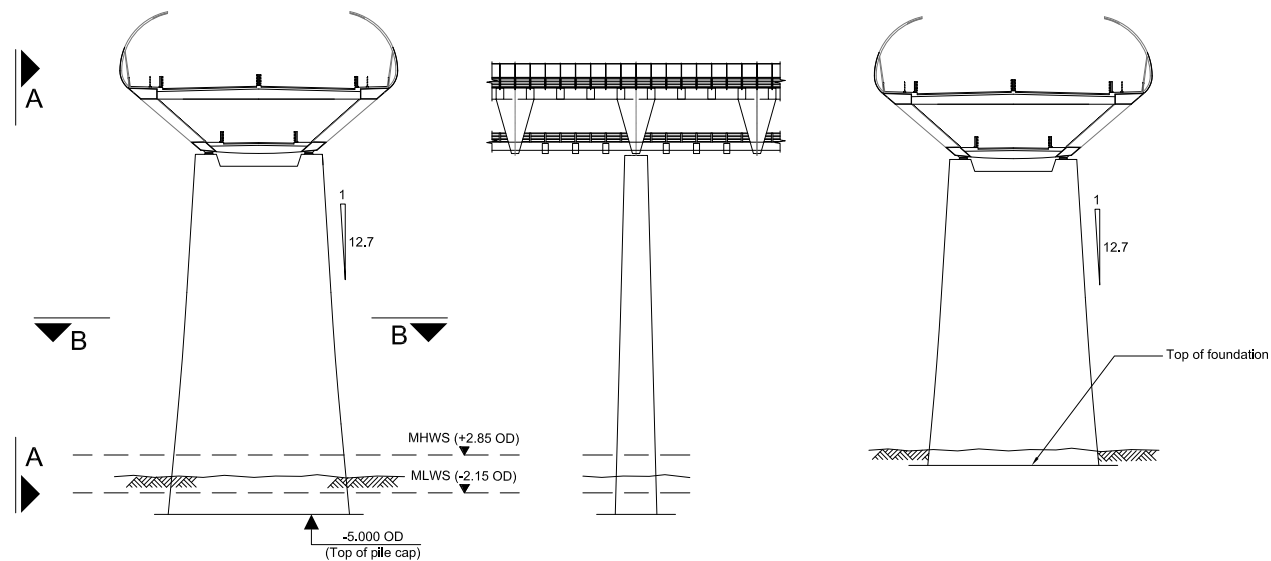
**SOUTH APPROACH ELEVATION**  
SCALE 1:2000



**NORTH APPROACH ELEVATION**  
SCALE 1:2000



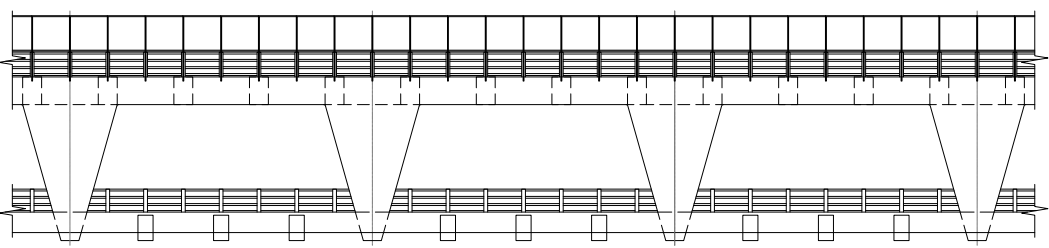
**TYPICAL SECTION**  
SCALE 1:200



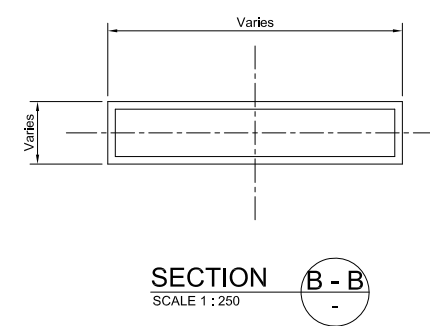
**MARINE PIER ELEVATION**  
SCALE 1:500

**ELEVATION A-A**  
SCALE 1:500

**LAND PIER ELEVATION**  
SCALE 1:500



**TYPICAL ELEVATION**  
SCALE 1:200



**SECTION B-B**  
SCALE 1:250

0					
0					
Rev	Rev. Date	Purpose of revision	Drawn	Checked	Reviewed

Client



An agency of  The Scottish Government

**JACOBS ARUP**

Project **FORTH REPLACEMENT CROSSING**

Drawing title **APPROACH SPANS  
DOUBLE LEVEL OPTION  
VIERENDEEL TRUSS OPTION  
GENERAL ARRANGEMENT**

Drawing status **PRELIMINARY**

Scale **AS SHOWN** **DO NOT SCALE**

Client no. **RD 001675**

Drawing number **FRC/C/076/D/342** Rev **0**

This drawing is not to be used in whole or part other than for the intended purpose and project as defined on this drawing. Refer to the contract for full terms and conditions.