

- Legend**
- North Corridor Option 1
 - North Corridor Option 2
 - South Corridor Option 1
 - South Corridor Option 2
 - Alluvium
 - Glaciofluvial Deposits
 - Moderately Productive Aquifer (Fracture/Intergranular flow) ***
 - Drift Cover > than 1m thick
 - Drift Cover < than 1m thick
 - Regions Underlain by Impermeable Rocks, generally without groundwater except at shallow depth (fracture flow)**
 - Drift Cover < than 1m thick
 - Drift Cover > than 1m thick
 - Private Groundwater Well
 - Spring

* Aquifer classification and mapping based on the Hydrogeological Map of Scotland (1988), BGS commissioned report CR/04/047N and geological maps published by BGS

Client

TRANSPORT SCOTLAND

An agency of The Scottish Government

JACOBS **ARUP**

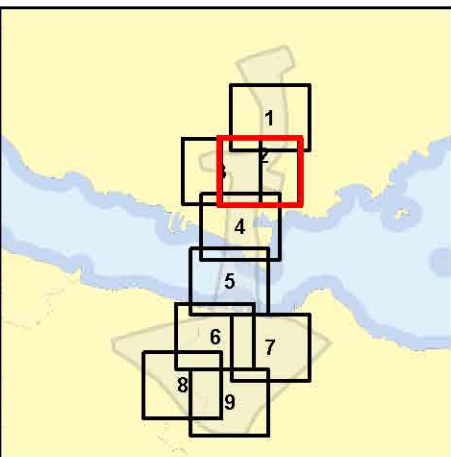
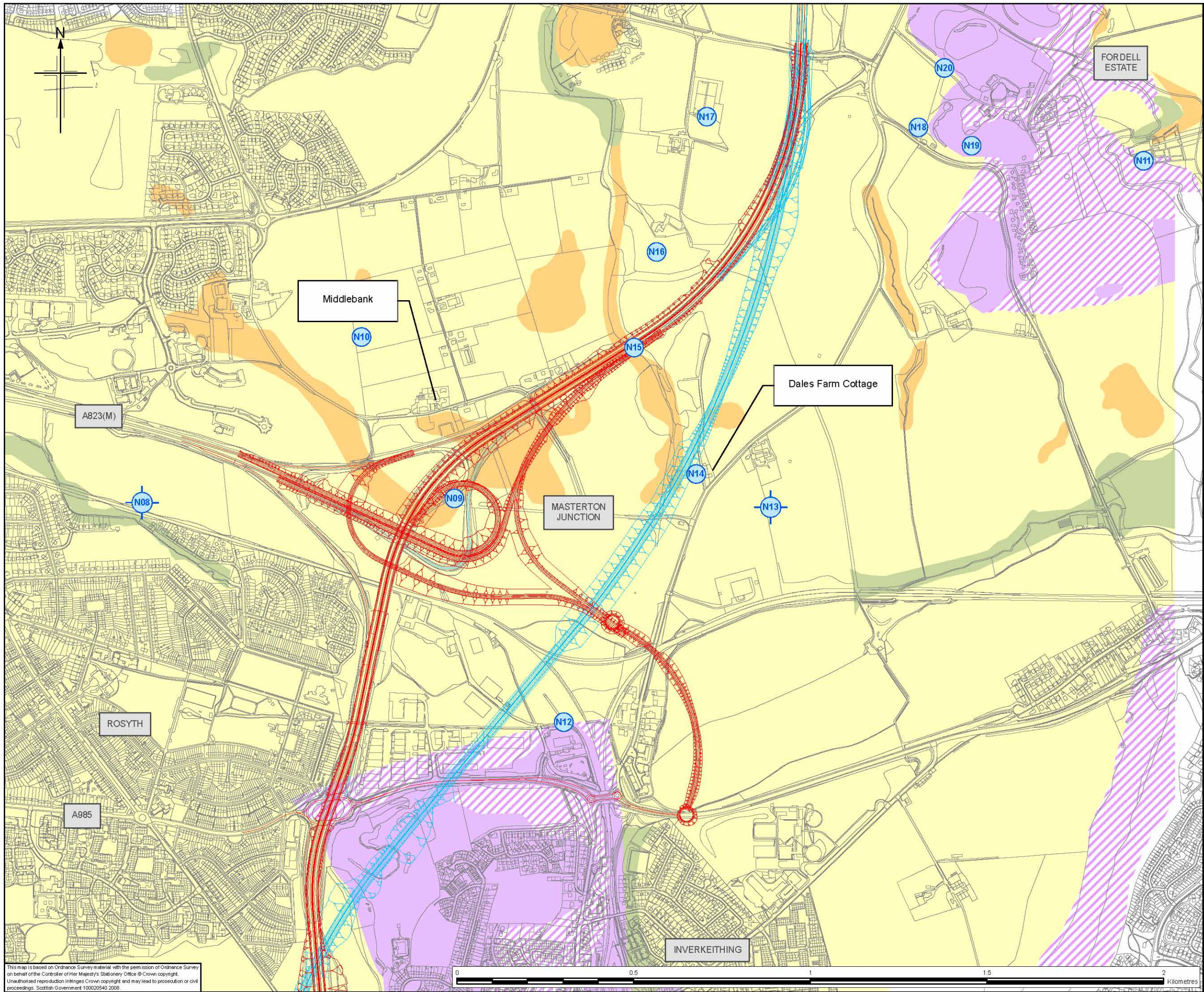
Project
FORTH REPLACEMENT CROSSING

Drawing title
Hydrogeological Constraints

Drawing Status	FINAL		
Scale	1:10,000	@ A3	DO NOT SCALE
Client no.	RD001675		
Drawing number	FIGURE 7.3a		Rev 0

This drawing is not to be used in whole or part other than for the intended purpose and project as defined on this drawing. Refer to the contract for full terms and conditions.

This map is based on Ordnance Survey material with the permission of Ordnance Survey on behalf of the Controller of Her Majesty's Stationery Office © Crown copyright. Unauthorised reproduction infringes Crown copyright and may lead to prosecution or civil proceedings. Scottish Government 100020540 2008.



Legend

- North Corridor Option 1
- North Corridor Option 2
- South Corridor Option 1
- South Corridor Option 2

Alluvium

Glaciofluvial Deposits

**Moderately Productive Aquifer
(Fracture/Intergranular flow) ***

Drift Cover > than 1m thick

Drift Cover < than 1m thick

**Regions Underlain by Impermeable Rocks,
generally without groundwater except at
shallow depth (fracture flow)**

Drift Cover < than 1m thick

Drift Cover > than 1m thick

Private Groundwater Well

Spring

* Aquifer classification and mapping based on the Hydrogeological Map of Scotland (1988), BGS commissioned report CR/04/047N and geological maps published by BGS

Client



An agency of The Scottish Government

JACOBS ARUP

Project

FORTH REPLACEMENT CROSSING

Drawing title

Hydrogeological Constraints

Drawing Status

FINAL

Scale

1:10,000 @ A3

DO NOT SCALE

Client no.

RD001675

Drawing number

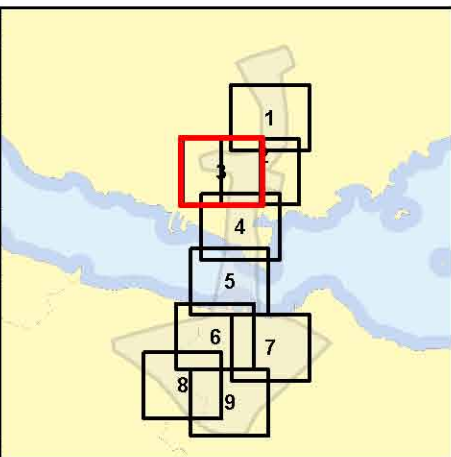
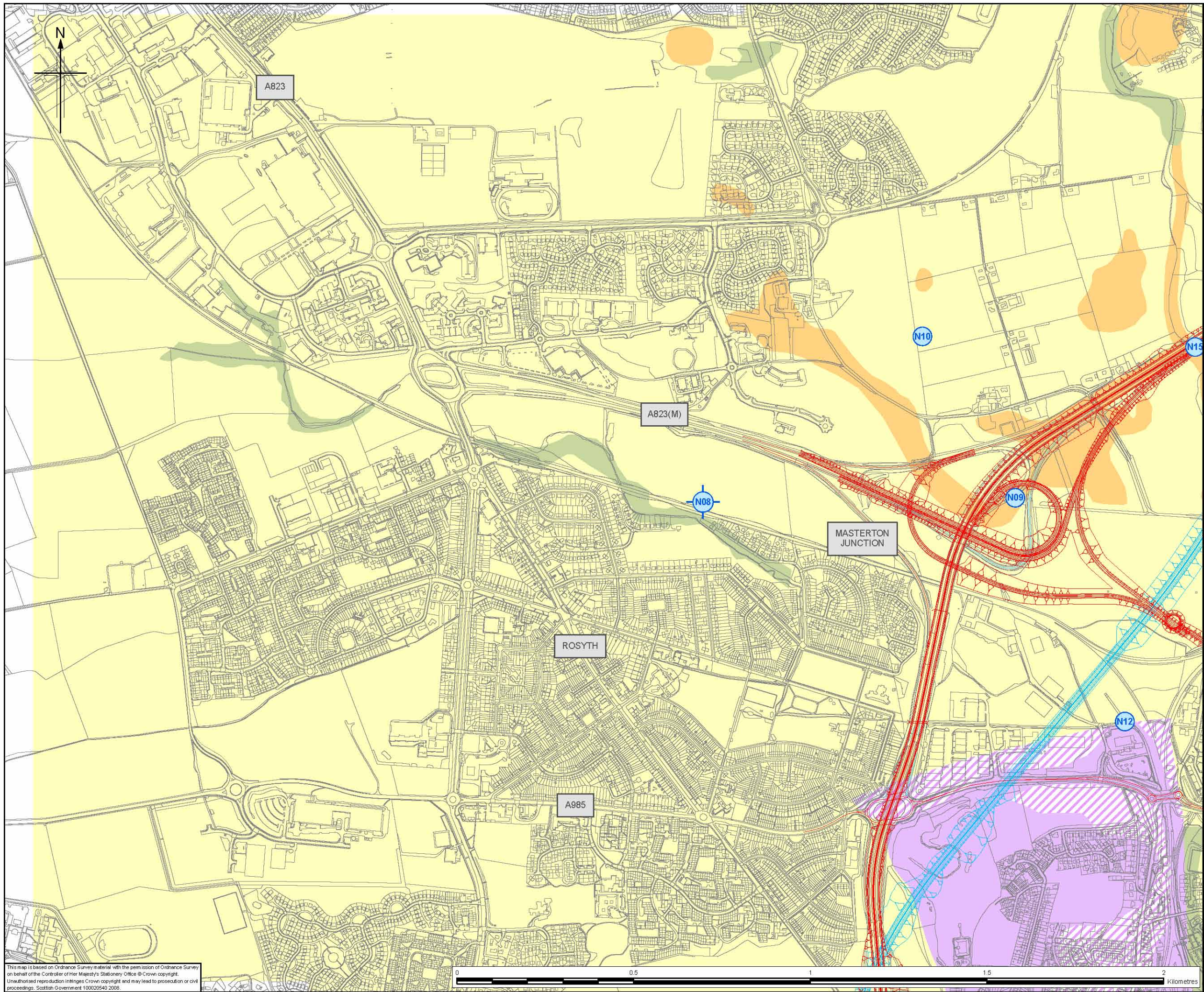
FIGURE 7.3b

Rev

0

This drawing is not to be used in whole or part other than for the intended purpose and project as defined on this drawing. Refer to the contract for full terms and conditions.

This map is based on Ordnance Survey material with the permission of Ordnance Survey on behalf of the Controller of Her Majesty's Stationery Office © Crown copyright. Unauthorised reproduction infringes Crown copyright and may lead to prosecution or civil proceedings. Scottish Government 100020540 2008.



Legend

- North Corridor Option 1
- North Corridor Option 2
- South Corridor Option 1
- South Corridor Option 2

- Alluvium
- Glaciofluvial Deposits

**Moderately Productive Aquifer
(Fracture/Intergranular flow) ***

- Drift Cover > than 1m thick
- Drift Cover < than 1m thick

**Regions Underlain by Impermeable Rocks,
generally without groundwater except at
shallow depth (fracture flow)**

- Drift Cover < than 1m thick
- Drift Cover > than 1m thick

- Private Groundwater Well
- Spring

* Aquifer classification and mapping based on the Hydrogeological Map of Scotland (1988), BGS commissioned report CR/04/047N and geological maps published by BGS

Client



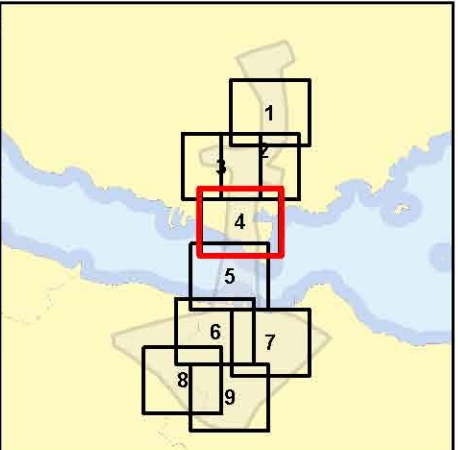
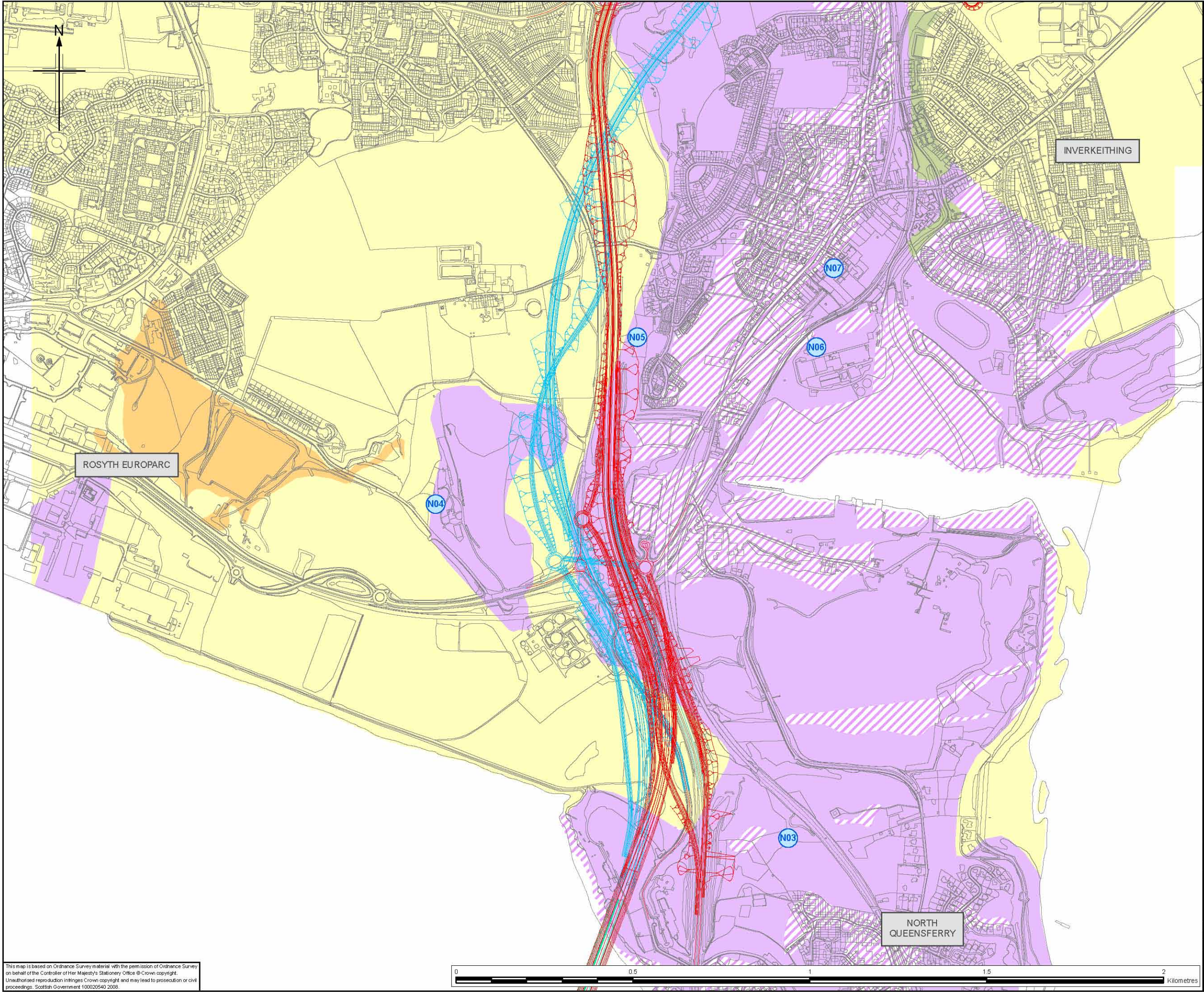
Project
FORTH REPLACEMENT CROSSING

Drawing title
Hydrogeological Constraints

Drawing Status		FINAL	
Scale	1:10,000 @A3	DO NOT SCALE	
Client no.	RD001675		
Drawing number	FIGURE 7.3c		Rev

This drawing is not to be used in whole or part other than for the intended purpose and project as defined on this drawing. Refer to the contract for full terms and conditions.

This map is based on Ordnance Survey material with the permission of Ordnance Survey on behalf of the Controller of Her Majesty's Stationery Office © Crown copyright. Unauthorised reproduction infringes Crown copyright and may lead to prosecution or civil proceedings. Scottish Government 100020540 2008.



Legend

- North Corridor Option 1
- North Corridor Option 2
- South Corridor Option 1
- South Corridor Option 2

- Alluvium
- Glaciofluvial Deposits

Moderately Productive Aquifer (Fracture/Intergranular flow) *

- Drift Cover > than 1m thick
- Drift Cover < than 1m thick

Regions Underlain by Impermeable Rocks, generally without groundwater except at shallow depth (fracture flow)

- Drift Cover < than 1m thick
- Drift Cover > than 1m thick

- Private Groundwater Well
- Spring

* Aquifer classification and mapping based on the Hydrogeological Map of Scotland (1988), BGS commissioned report CR/04/047N and geological maps published by BGS

Client

TRANSPORT SCOTLAND

An agency of The Scottish Government

JACOBS **ARUP**

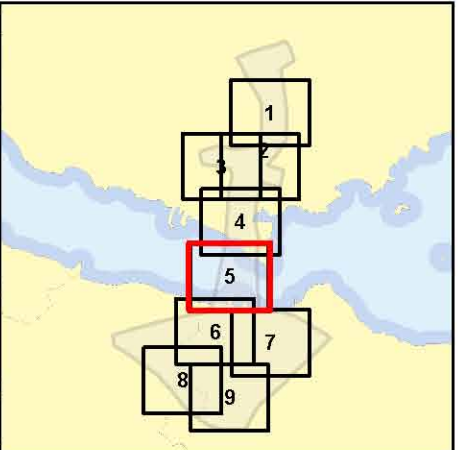
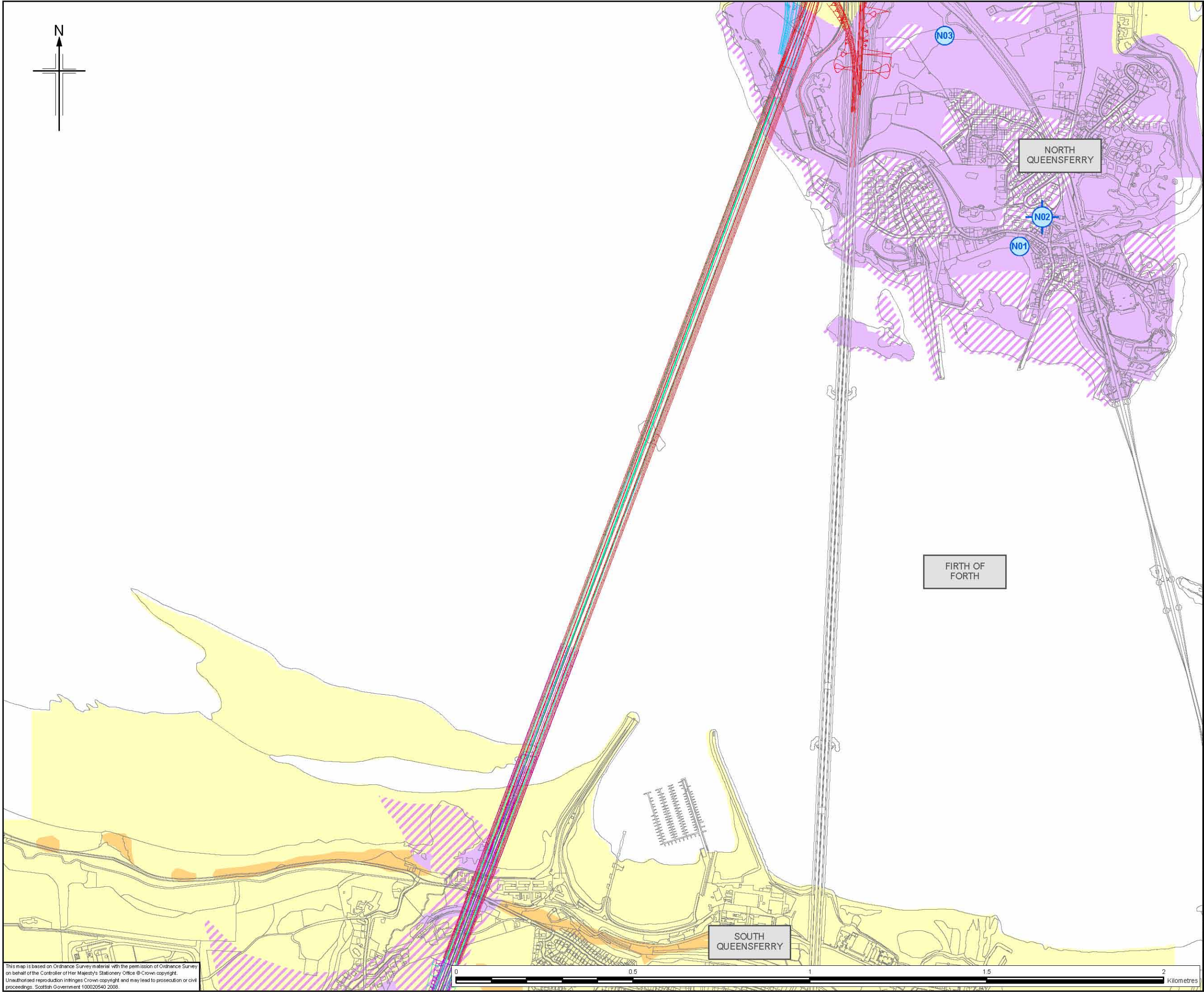
Project
FORTH REPLACEMENT CROSSING

Drawing title
Hydrogeological Constraints

Drawing Status	FINAL		
Scale	1:10,000	@ A3	DO NOT SCALE
Client no.	RD001675		
Drawing number	FIGURE 7.3d		Rev 0

This drawing is not to be used in whole or part other than for the intended purpose and project as defined on this drawing. Refer to the contract for full terms and conditions.

This map is based on Ordnance Survey material with the permission of Ordnance Survey on behalf of the Controller of Her Majesty's Stationery Office © Crown copyright. Unauthorised reproduction infringes Crown copyright and may lead to prosecution or civil proceedings. Scottish Government 100020540 2008.





Legend

- North Corridor Option 1
- North Corridor Option 2
- South Corridor Option 1
- South Corridor Option 2
- Alluvium
- Glaciofluvial Deposits
- Moderately Productive Aquifer (Fracture/Intergranular flow) ***
- Drift Cover > than 1m thick
- Drift Cover < than 1m thick
- Regions Underlain by Impermeable Rocks, generally without groundwater except at shallow depth (fracture flow)**
- Drift Cover < than 1m thick
- Drift Cover > than 1m thick
- Private Groundwater Well
- Spring

* Aquifer classification and mapping based on the Hydrogeological Map of Scotland (1988), BGS commissioned report CR/04/047N and geological maps published by BGS

Client


TRANSPORT SCOTLAND

An agency of  The Scottish Government

JACOBS **ARUP**

Project
FORTH REPLACEMENT CROSSING

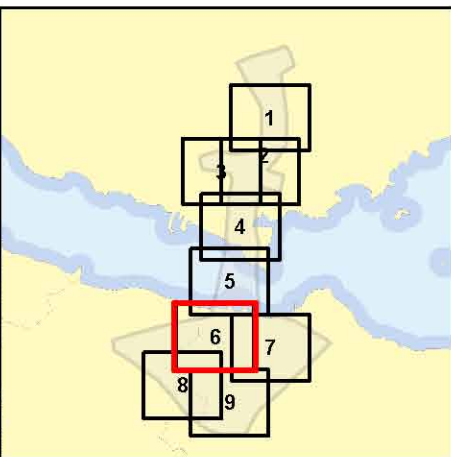
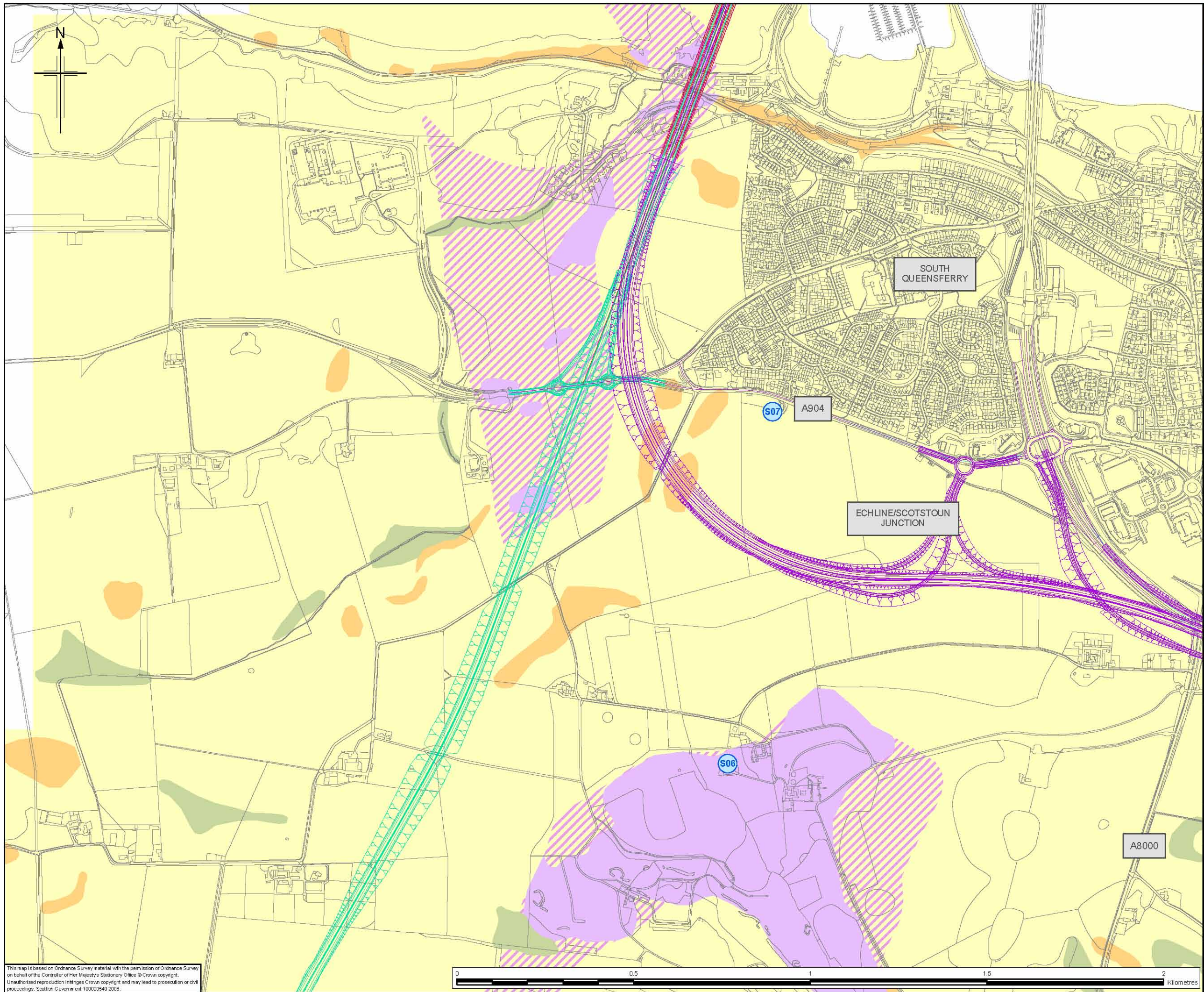
Drawing title
Hydrogeological Constraints

Drawing Status
FINAL

Scale	1:10,000 @ A3	DO NOT SCALE
Client no.	RD001675	
Drawing number	FIGURE 7.3e	Rev 0

This drawing is not to be used in whole or part other than for the intended purpose and project as defined on this drawing. Refer to the contract for full terms and conditions.

This map is based on Ordnance Survey material with the permission of Ordnance Survey on behalf of the Controller of Her Majesty's Stationery Office © Crown copyright. Unauthorised reproduction infringes Crown copyright and may lead to prosecution or civil proceedings. Scottish Government 100020540 2008.



Legend

- North Corridor Option 1
- North Corridor Option 2
- South Corridor Option 1
- South Corridor Option 2

- Alluvium
- Glaciofluvial Deposits

**Moderately Productive Aquifer
(Fracture/Intergranular flow) ***

- Drift Cover > than 1m thick
- Drift Cover < than 1m thick

**Regions Underlain by Impermeable Rocks,
generally without groundwater except at
shallow depth (fracture flow)**

- Drift Cover < than 1m thick
- Drift Cover > than 1m thick

- Private Groundwater Well
- Spring

* Aquifer classification and mapping based on the Hydrogeological Map of Scotland (1988), BGS commissioned report CR/04/047N and geological maps published by BGS

Client



An agency of The Scottish Government

JACOBS **ARUP**

Project

FORTH REPLACEMENT CROSSING

Drawing title

Hydrogeological Constraints

Drawing Status

FINAL

Scale

1:10,000 @ A3

DO NOT SCALE

Client no.

RD001675

Drawing number

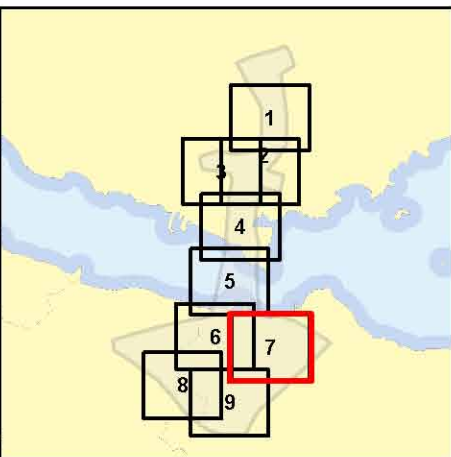
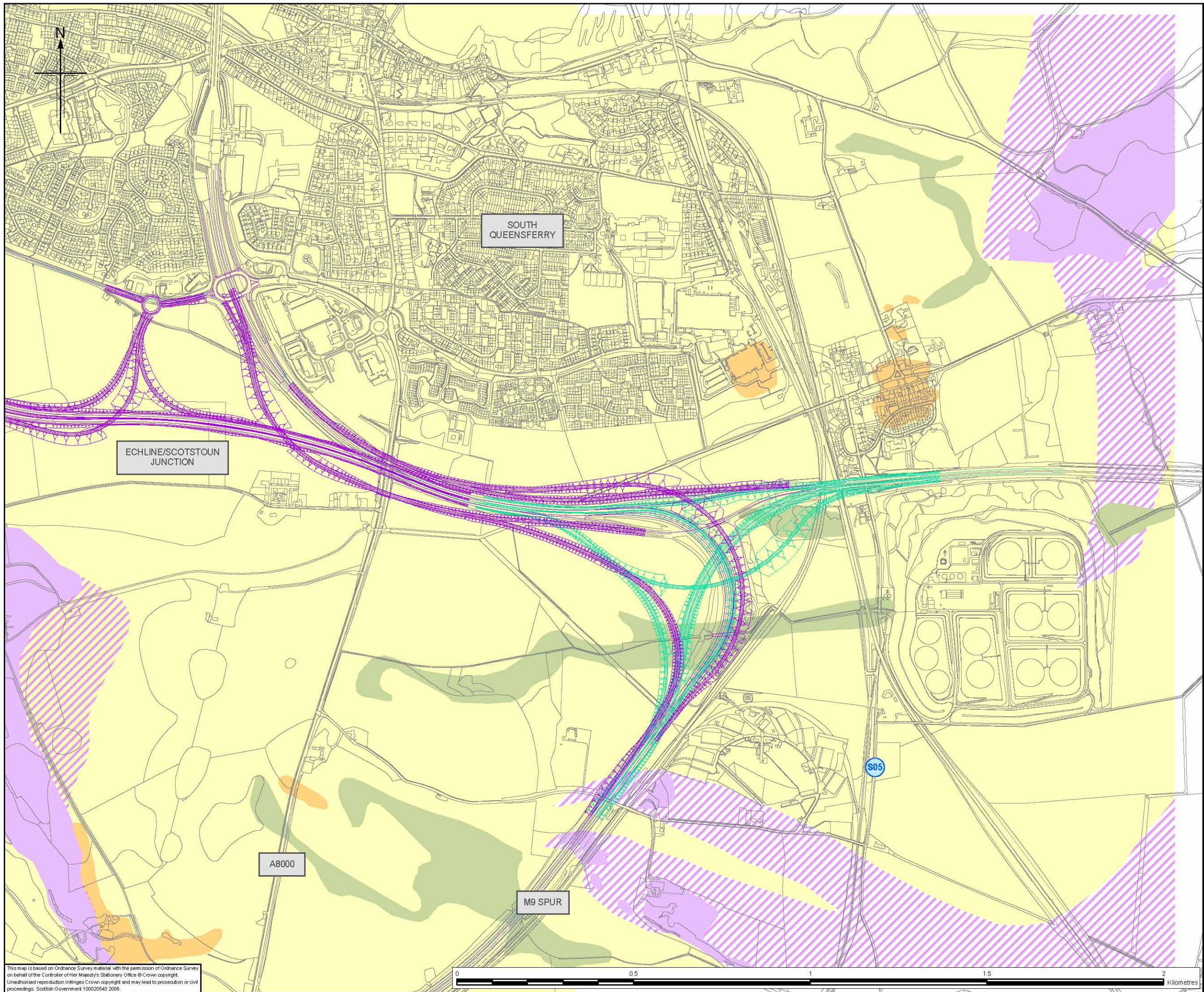
FIGURE 7.3f

Rev

0

This drawing is not to be used in whole or part other than for the intended purpose and project as defined on this drawing. Refer to the contract for full terms and conditions.

This map is based on Ordnance Survey material with the permission of Ordnance Survey on behalf of the Controller of Her Majesty's Stationery Office © Crown copyright. Unauthorised reproduction infringes Crown copyright and may lead to prosecution or civil proceedings. Scottish Government 100020540 2008.



Legend

- North Corridor Option 1
- North Corridor Option 2
- South Corridor Option 1
- South Corridor Option 2

- Alluvium
- Glaciofluvial Deposits

**Moderately Productive Aquifer
(Fracture/Intergranular flow) ***

- Drift Cover > than 1m thick
- Drift Cover < than 1m thick

**Regions Underlain by Impermeable Rocks,
generally without groundwater except at
shallow depth (fracture flow)**

- Drift Cover < than 1m thick
- Drift Cover > than 1m thick

- Private Groundwater Well
- Spring

* Aquifer classification and mapping based on the Hydrogeological Map of Scotland (1988), BGS commissioned report CR/04/047N and geological maps published by BGS

Client

TRANSPORT SCOTLAND

An agency of The Scottish Government

JACOBS **ARUP**

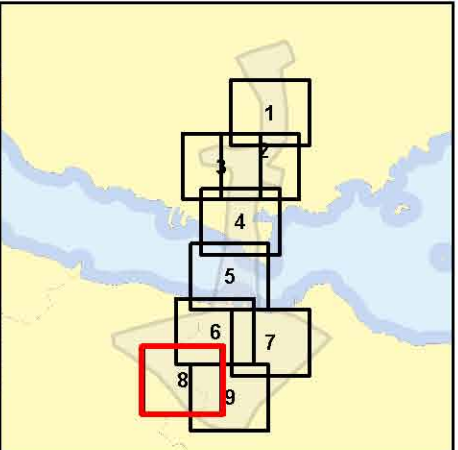
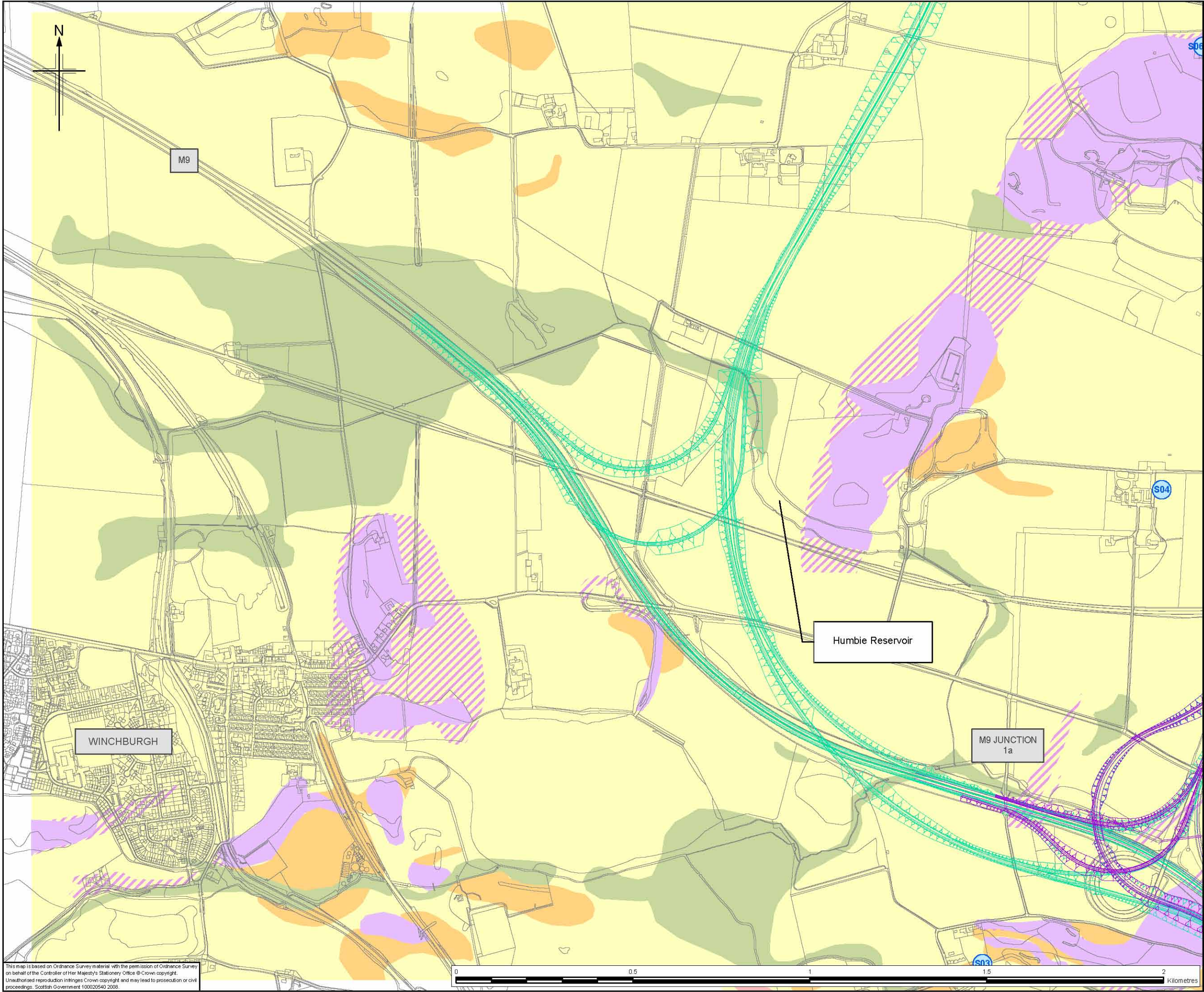
Project
FORTH REPLACEMENT CROSSING

Drawing title
Hydrogeological Constraints

Drawing Status	FINAL		
Scale	1:10,000	@ A3	DO NOT SCALE
Client no.	RD001675		
Drawing number	FIGURE 7.3g		Rev 0

This drawing is not to be used in whole or part other than for the intended purpose and project as defined on this drawing. Refer to the contract for full terms and conditions.

This map is based on Ordnance Survey material with the permission of Ordnance Survey on behalf of the Controller of Her Majesty's Stationery Office © Crown copyright. Unauthorised reproduction infringes Crown copyright and may lead to prosecution or civil proceedings. Scottish Government 100020540 2008.



- Legend**
- North Corridor Option 1
 - North Corridor Option 2
 - South Corridor Option 1
 - South Corridor Option 2
 - Alluvium
 - Glaciofluvial Deposits
 - Moderately Productive Aquifer (Fracture/Intergranular flow) ***
 - Drift Cover > than 1m thick
 - Drift Cover < than 1m thick
 - Regions Underlain by Impermeable Rocks, generally without groundwater except at shallow depth (fracture flow)**
 - Drift Cover < than 1m thick
 - Drift Cover > than 1m thick
 - Private Groundwater Well
 - Spring

* Aquifer classification and mapping based on the Hydrogeological Map of Scotland (1988), BGS commissioned report CR/04/047N and geological maps published by BGS

Client

TRANSPORT SCOTLAND

An agency of The Scottish Government

JACOBS **ARUP**

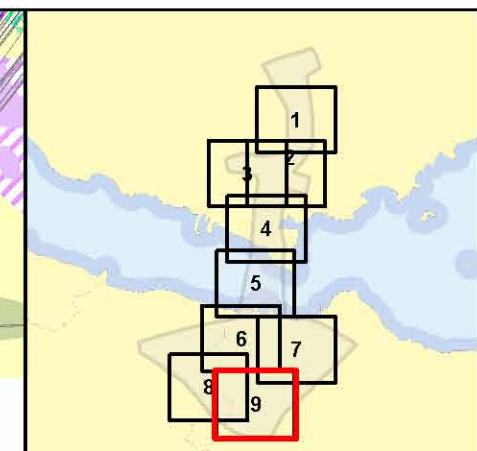
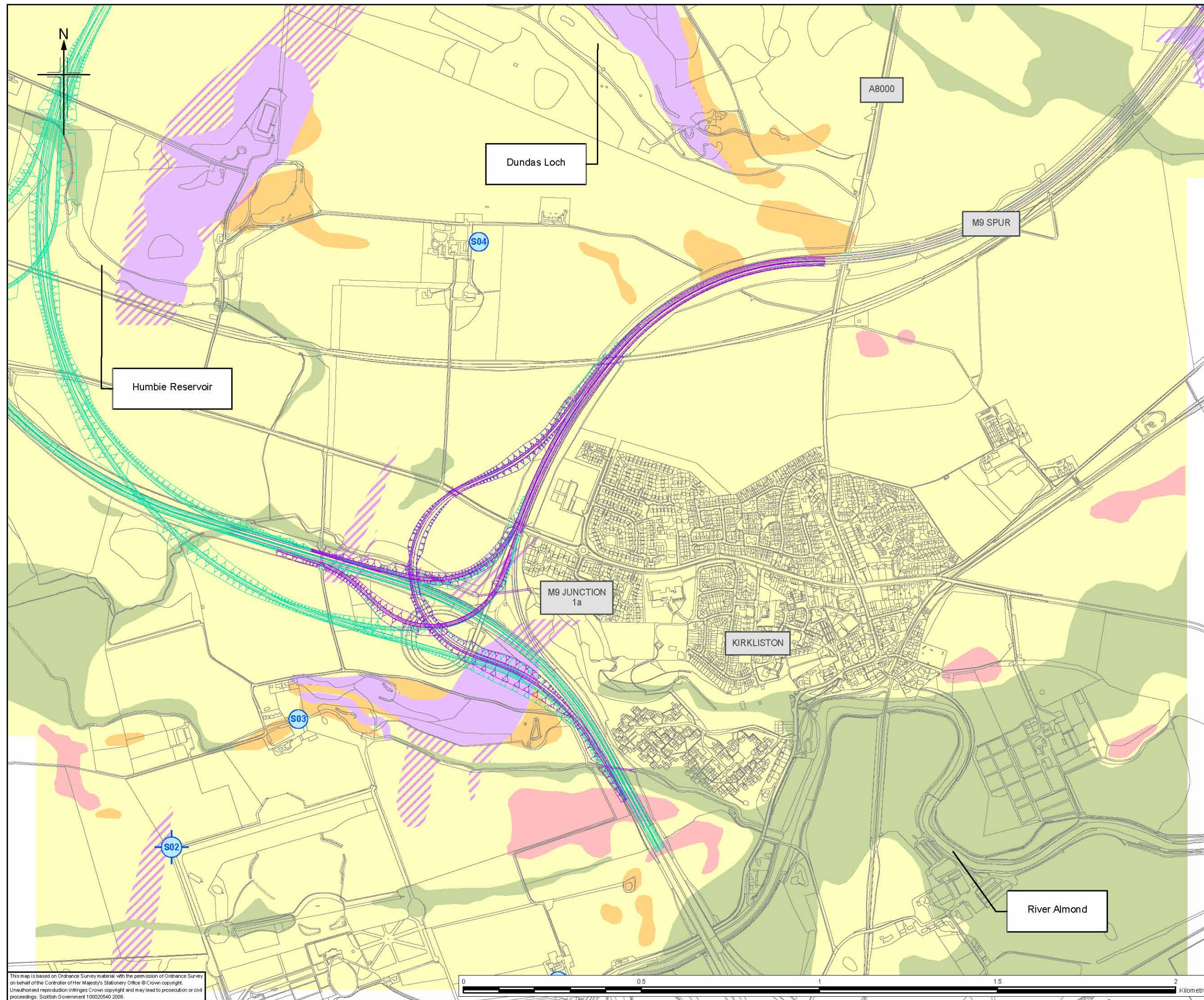
Project
FORTH REPLACEMENT CROSSING

Drawing title
Hydrogeological Constraints

Drawing Status	FINAL		
Scale	1:10,000	@ A3	DO NOT SCALE
Client no.	RD001675		
Drawing number	FIGURE 7.3h		Rev 0

This drawing is not to be used in whole or part other than for the intended purpose and project as defined on this drawing. Refer to the contract for full terms and conditions.

This map is based on Ordnance Survey material with the permission of Ordnance Survey on behalf of the Controller of Her Majesty's Stationery Office © Crown copyright. Unauthorised reproduction infringes Crown copyright and may lead to prosecution or civil proceedings. Scottish Government 100020540 2008.



Legend

- North Corridor Option 1
- North Corridor Option 2
- South Corridor Option 1
- South Corridor Option 2
- Alluvium
- Glaciofluvial Deposits

Moderately Productive Aquifer (Fracture/Intergranular flow) *

- Drift Cover > than 1m thick
- Drift Cover < than 1m thick

Regions Underlain by Impermeable Rocks, generally without groundwater except at shallow depth (fracture flow)


- Drift Cover < than 1m thick
- Drift Cover > than 1m thick


Private Groundwater Well

Spring

* Aquifer classification and mapping based on the Hydrogeological Map of Scotland (1988), BGS commissioned report CR/04/047N and geological maps published by BGS

Client


TRANSPORT SCOTLAND

An agency of  The Scottish Government

JACOBS **ARUP**

Project
FORTH REPLACEMENT CROSSING

Drawing title
Hydrogeological Constraints

Drawing Status
FINAL

Scale
1:10,000 @ A3 DO NOT SCALE

Client no.
RD001675

Drawing number
FIGURE 7.3i

Rev
0

This drawing is not to be used in whole or part other than for the intended purpose and project as defined on this drawing. Refer to the contract for full terms and conditions.

This map is based on Ordnance Survey material with the permission of Ordnance Survey on behalf of the Controller of Her Majesty's Stationery Office © Crown copyright. Unauthorised reproduction infringes Crown copyright and may lead to prosecution or civil proceedings. Scottish Government 100020540 2008.