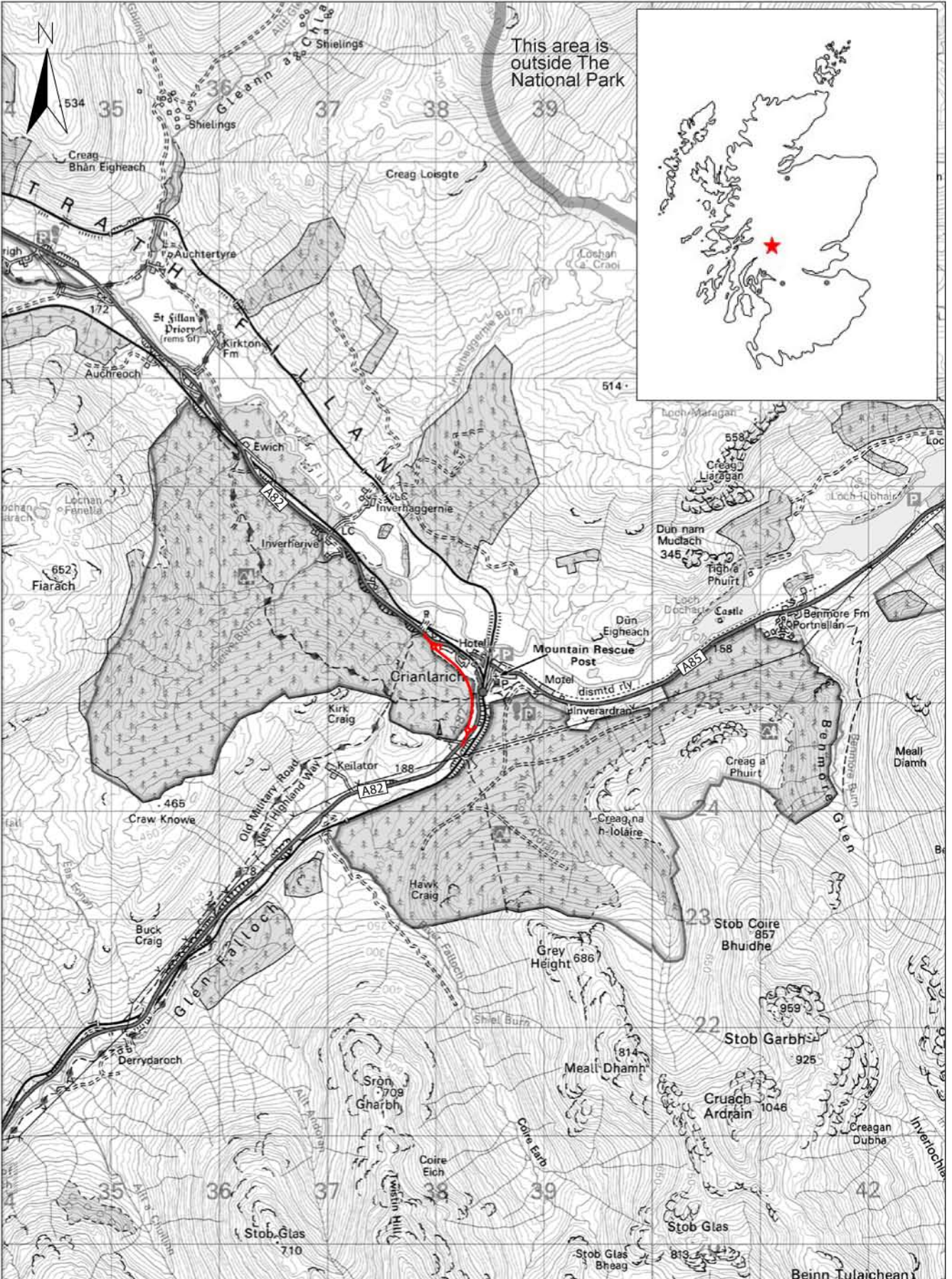




This map is based on Ordnance Survey material with the permission of Her Majesty's Stationary Office © Crown copyright. Unauthorised reproduction infringes Crown copyright and may lead to prosecution or civil proceedings. Scottish Government. 100020540. 2008.



**Key:**

-  Proposed Route A82(T)
-  Location of Proposed Bypass

Drawn by: KM      Checked by: PQ      Date: 08/08

A82(T) Criarlach Bypass

**NTS Figure 1:  
Scheme Location**

Scale 1 : 50 000 at A4

