

## **A6.2 Consultation Letters**

1.1.1 Sample copies of the following consultation letters are provided in this appendix:

- Stage 2 Environmental Impact Assessment (March 2008).
- Stage 3 Environmental Impact Assessment (December 2008).
- Environmental Impact Assessment - Pedestrians, Equestrians, Cyclists and Community Facilities (November 2008).
- Forth Replacement Crossing Public Exhibitions - Consultee Feedback Form (January 2009).

21 March 2008

*Name*  
*Title*  
*Address*

Dear *Name*

**Transport Scotland**  
**Forth Replacement Crossing (FRC)**  
**Stage 2 Environmental Impact Assessment**

We write on behalf of Transport Scotland regarding the Environmental Impact Assessment (EIA) for the Forth Replacement Crossing. As you may be aware an announcement was made to Parliament by John Swinney MSP on 19 December 2007 stating that the Forth Replacement Crossing is to be a multi-modal cable-stayed bridge upstream of the Forth Road Bridge. Construction of the replacement crossing will commence in 2011 and is expected to take five and a half years to complete.

A Jacobs Arup consortium has recently been appointed as consultants to assist in delivering this project. A Stage 2 EIA is one of their initial tasks and will involve the consideration of a number of design options and routes in accordance with the Environmental Assessment (Scotland) Act 2005 and following the guidance contained within the Design Manual for Roads and Bridges (DMRB) Volume 11. The project team is currently undertaking baseline information gathering, environmental surveys and initial stakeholder consultation. Consultation with stakeholders is considered a key component of the EIA and design process. Further information on consultation within EIA is provided in Annex A. Figure 1 shows the study area within which environmental information will be gathered.

To assist us at this stage we would appreciate any comments you may consider relevant to the environmental assessment.

We are working to a strict programme and therefore we would be grateful if you could respond by 14 April 2008 either by email to [Rebecca.McClenaghan@jacobs.com](mailto:Rebecca.McClenaghan@jacobs.com) or by letter to Rebecca McClenaghan, 27 Abercromby Place, Edinburgh EH3 6QE. Should you have any queries or seek clarification on the proposal, please do not hesitate to contact Rebecca McClenaghan on 0131 525 8109.

Yours sincerely



Shirley Henderson  
Environmental and Landscaping Manager

SAMPLE

## **Annex A – Environmental Impact Assessment Consultation Process**

Environmental Impact Assessments (EIAs) have been required for certain major developments since the implementation in the UK of the European Council Directive on Environmental Assessment (EC Directive 85/337/EEC) 1988. The Directive was subsequently amended by Directive 97/11/EC. Directive 97/11/EC is implemented by the Environmental Impact Assessment (Scotland) Regulations 1999 (as amended). The Act has since been updated to the Environmental Impact Assessment (Scotland) Act 2005.

The Regulations set out the information that must be included in the Environmental Statement (ES, the written report of the EIA findings). The Regulations require that an ES should include at least:

- description of the development;
- outline of the main alternatives considered;
- data necessary to identify and assess the main effects on the environment;
- description of the likely significant effects;
- description of the measures envisaged in order to avoid, reduce or remedy significant adverse effects;
- indication of any difficulties encountered in compiling the required information; and
- Non-Technical Summary of the above information.

In a project such as the Forth Replacement Crossing, continuous consultation with both statutory and non-statutory consultees is required throughout the assessment period. Consultation often involves three key components, as outlined below:

- Client Consultation - involves continual consultation with the client group throughout the study;
- Stakeholder Consultation - “stakeholders” are defined as a person or organisation that has an interest in the project proposals other than as a member of the public. Consultation is generally conducted through meetings, workshops and/ or written communication; and
- Public Consultation – this can involve a number of methods to achieve an inclusive approach. Methods of consultation include public exhibitions, open days and written communication.

The purpose of these consultations is to:

- inform and allow comment on proposals;
- obtain baseline information;



- establish key environmental issues;
- identify scope and methods of assessment; and
- enable key potential objections to be resolved.

Consultee knowledge of an area can often be helpful in identifying sources of information about the environment likely to be affected. More importantly, consultees can often also identify areas of particular local interest which should be assessed as part of the EIA and reported in the ES. Therefore, in addition to facilitating participation of consultees, the information received through the consultation process assists the project team to fulfill the reporting requirements set out in the EIA Regulations.

SAMPLE

**Jacobs Arup**

160 Dundee Street  
Edinburgh, UK  
EH11 1DQ  
+44.(0)131.659.1500 Fax +44.(0)131.228.6177

15 December 2008

*Name*

*Title*

*Address*

Dear *Name*,

**Transport Scotland  
Forth Replacement Crossing (FRC): Managed Crossing Strategy  
Stage 3 Environmental Impact Assessment**

We write on behalf of Transport Scotland regarding the Environmental Impact Assessment (EIA) for the Forth Replacement Crossing being undertaken within the terms of the Environmental Impact Assessment (Scotland) Regulations 1999.

We initially consulted with you in March 2008, requesting information relevant to the EIA study area, with additional communications where further information was required.

We would now like to consult with you again following the announcement on the Forth Replacement Crossing made by the Transport Minister, Stewart Stevenson MSP, on 10 December 2008. An information pack from Transport Scotland providing an update on the Forth Replacement Crossing was sent to your organisation, setting out the Managed Crossing Strategy which is being taken forward.

A Stage 2 EIA has already been undertaken which included extensive baseline information gathering, environmental surveys and stakeholder consultation. Stage 3, a more detailed assessment, is now underway.

To assist us in the Stage 3 EIA, we would appreciate any comments you may consider relevant to the environmental assessment.

For your information, we attach a plan showing the latest design for the Forth Replacement Crossing. Please note this is indicative only and may be subject to alterations as the design progresses.

In view of the tight timescale we are working to, we would be grateful if you could respond by 30 January 2009 by email, to [Rebecca.McClenaghan@Jacobs.com](mailto:Rebecca.McClenaghan@Jacobs.com). Should you have any queries or wish to seek clarification on the proposals, please do not hesitate to contact Rebecca McClenaghan on 0131 659 1566.

**Jacobs Arup – Jacobs U.K. Limited and Ove Arup & Partners International Limited Consortium**

Jacobs U.K. Limited, Registered Office: 95 Bothwell Street, Glasgow G2 7HX, Scotland. Registered in Scotland Number 141100  
Ove Arup & Partners International Limited, Registered Office: 13 Fitzroy Street, London W1T 4BQ. Company No. 00952468

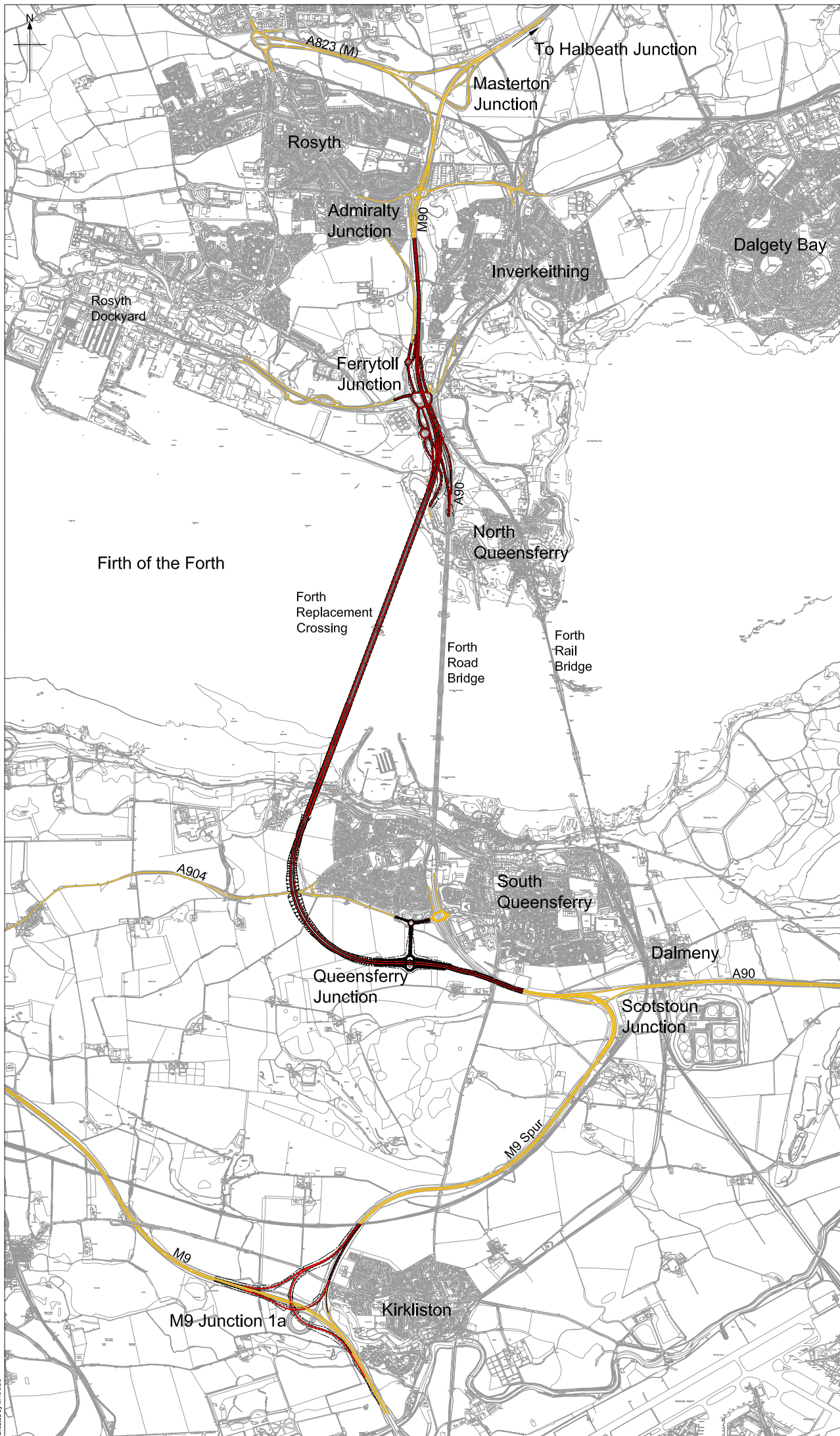
Further information about the Forth Replacement Crossing project is available at [www.forthreplacementcrossing.info](http://www.forthreplacementcrossing.info) where you can also sign up to the electronic newsletter for regular updates. If you have not received an information pack please contact the FRC project team on 0141 272 7578 who will be happy to send one out to you. Information packs are also available in a variety of local libraries within the immediate area of the project.

Yours sincerely



Shirley Henderson  
Environmental and Landscaping Leader

SAMPLE



Notes  
 This layout is indicative only  
 Legend  
— Proposed Carriageway  
— Existing Carriageway

Rev	001236	01/01/2016				
Rev	001236	01/01/2016				
Rev	001236	01/01/2016				



**JACOBS ARUP**  
 FORTH REPLACEMENT CROSSING

PROPOSED ROUTE CORRIDOR  
 STAGE 3 CONSULTATION

Scale	1:5000	1:5000	DO NOT SCALE
Figure No.	001236	001236	
Figure Title	FIGURE 2		
Rev	0		

This drawing is not to be used in whole or part other than for the intended purpose and project as defined on this drawing. Refer to the contract for full terms and conditions.

**Jacobs Arup**

160 Dundee Street  
Edinburgh, UK  
EH11 1DQ  
+44.(0)131.659.1500 Fax +44.(0)131.228.6177

27 November 2008

*Name*

*Title*

*Address*

Dear *Name*,

**Transport Scotland  
Forth Replacement Crossing (FRC)  
Environmental Impact Assessment - Pedestrian, Cyclists, Equestrians and Community  
Facilities**

We write on behalf of Transport Scotland regarding the Environmental Impact Assessment (EIA) for the Forth Replacement Crossing (FRC). The EIA will include consideration of potential effects of the proposed scheme on pedestrians, cyclists, equestrians and communities. As part of the assessment, locations of paths, cycleways, equestrian routes, key community facilities and their catchments are required. The enclosed plans indicate the baseline data collected to date.

To assist us in undertaking our assessment, we would be grateful if you could review the attached plans and confirm they are representative of the paths, cycleways, equestrian routes and facilities of which you are aware. Should you have any amendments or additions, please mark/annotate changes on the plans provided. In addition, we would appreciate if you could highlight any informal recreation areas that you are aware of on the attached plans. Please return any amended plans by the **22<sup>nd</sup> December 2008** either by email to [maryanne.paterson@jacobs.com](mailto:maryanne.paterson@jacobs.com) or marked for the attention of Maryanne Paterson at the above address.

If you have any queries or wish to discuss the matter further please do not hesitate to contact my colleague Maryanne Paterson, either by telephone on 0131 659 1565 or email.

Yours sincerely

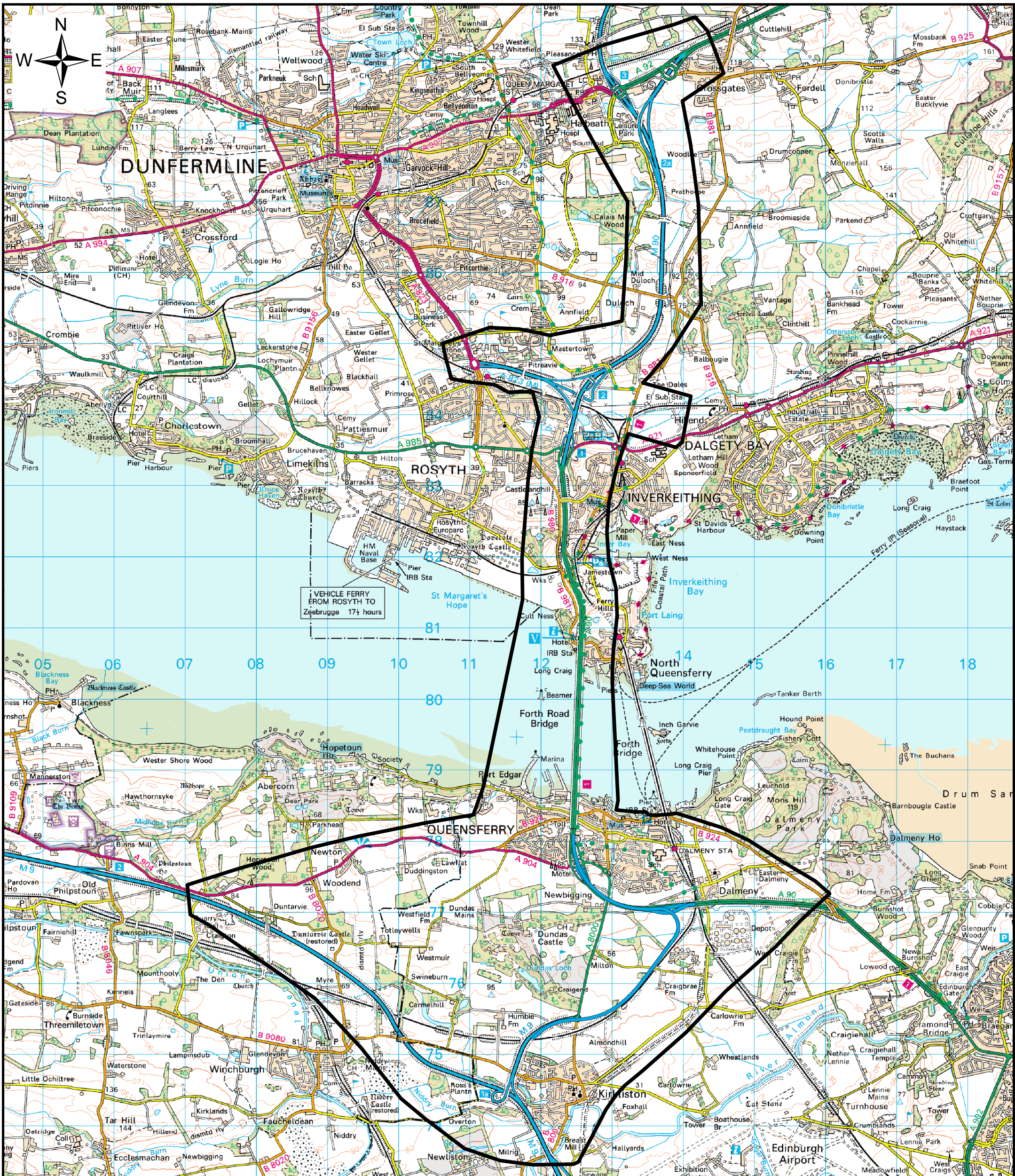


**Shirley Henderson  
Environmental and Landscaping Leader**

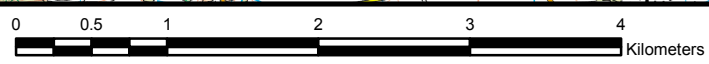
**Jacobs Arup – Jacobs U.K. Limited and Ove Arup & Partners International Limited Consortium**

Jacobs U.K. Limited, Registered Office: 95 Bothwell Street, Glasgow G2 7HX, Scotland. Registered in Scotland Number 141100  
Ove Arup & Partners International Limited, Registered Office: 13 Fitzroy Street, London W1T 4BQ. Company No. 00952468





VEHICLE FERRY FROM ROSYTH TO Zeebrugge 17 1/2 hours



© Crown copyright. All rights reserved Scottish Government 100020540, 2008.



**Legend**

Study Area

<b>JE JACOBS</b>		<b>ARUP</b>	
<small>95 Bothwell Street, Glasgow, G2 7HX, UK Tel: 0141 204 2511 Fax: 0141 208 3109 www.jacobsonline.com</small>			
Client	<b>TRANSPORT SCOTLAND</b>		
Project	<b>Forth Replacement Crossing</b>		
Title	<b>Study Area Map</b>		
Drawing Status	<b>DRAFT</b>		
Job No.	B0900001		
Figure No.	<b>Figure 1</b>	Revision	
Scale	<b>1:50,000 @ A3</b>	19th March 2008	
Drawn	AMD	Checked	RM
		Approved	SH
<small>Copyright reserved Jacobs UK Ltd 95 Bothwell Street, Glasgow, G2 7HX</small>			



# FORTHREPLACEMENTCROSSING

www.forthreplacementcrossing.info

## Feedback

### Instructions:

- Please use this form to comment on the proposals for the Forth Replacement Crossing.
- Forms can be posted in the feedback boxes at the exhibitions.  
**OR**
- Posted to Forth Replacement Crossing, Transport Scotland, 7th Floor, Buchanan House, 58 Port Dundas Road, Glasgow, G4 OHF.  
**OR**
- Downloaded from the website [www.forthreplacementcrossing.info](http://www.forthreplacementcrossing.info)
- To help us analyse feedback please provide comments under the relevant section headings and use the map to highlight the area(s) your comments relate to if appropriate.
- Transport Scotland will publish a report summarising the feedback received from the public and how that information has been used in the development of the Forth Replacement Crossing. We regret that we cannot provide personal responses.
- Please provide your name and full postal address below to allow members of the Transport Scotland Forth Replacement Crossing team to contact you should it be necessary to clarify any comments you make.

Name:

Postcode:

Address:

The Forth Replacement Crossing team routinely publishes newsletters by email and post. Please tick here if you would like to receive future updates by post.

Please tick here if you would like to receive future updates by email.

Email address:



TRANSPORT  
SCOTLAND

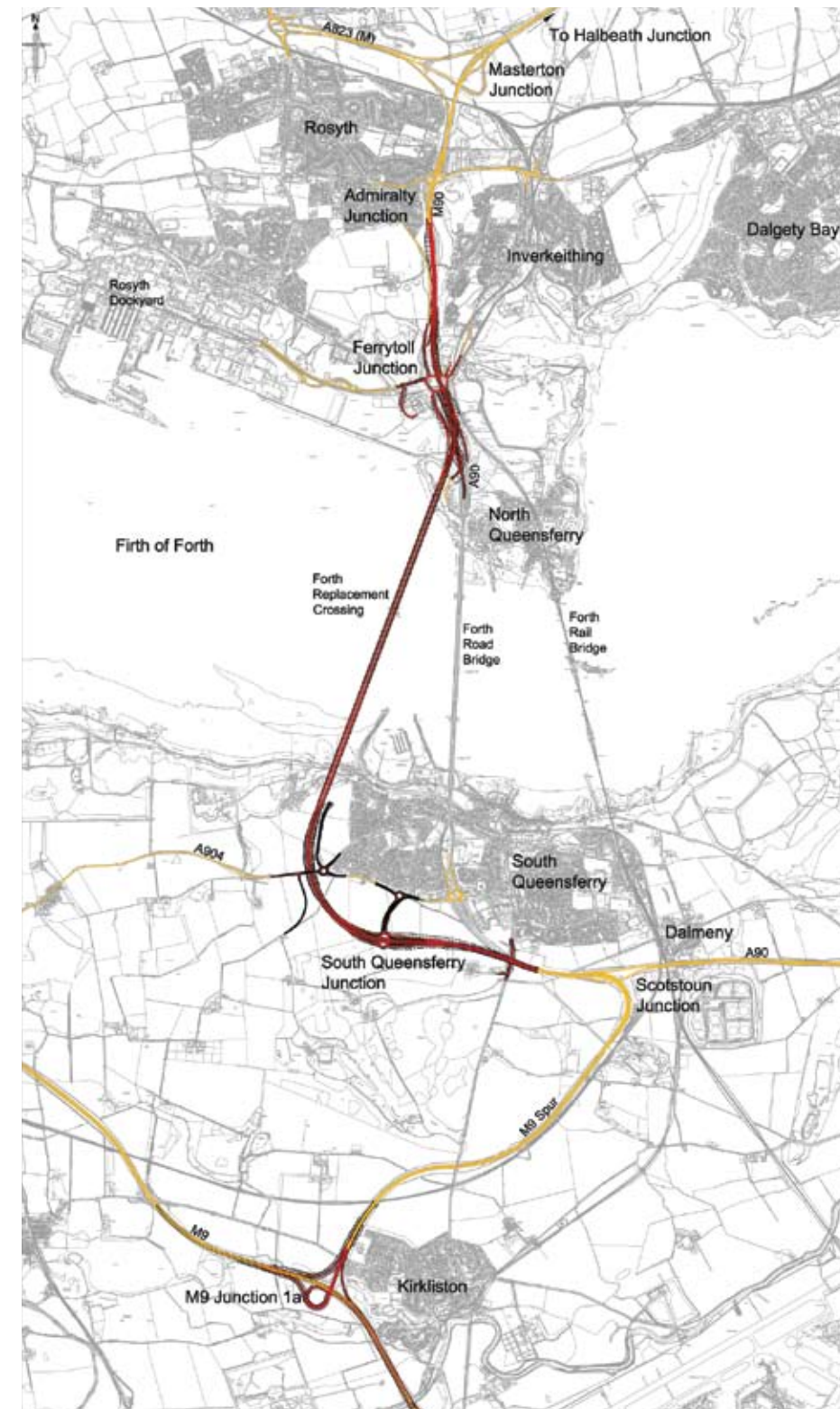
## Feedback

Please provide comments under the relevant section headings and use the map to highlight the area(s) your comments relate to if appropriate.

**Environment** (for example noise concerns, landscape and views, recreational areas, suggested areas for environmental mitigation such as planting)

**Accessibility** (for example local accesses, junctions, pedestrian and cycle paths)

## Map



Junctions are indicative at this stage.



# FORTHREPLACEMENTCROSSING

[www.forthreplacementcrossing.info](http://www.forthreplacementcrossing.info)

## Feedback

Please provide comments under the relevant section headings and use the map to highlight the area(s) your comments relate to if appropriate.

**Public Transport** (for example bus services, park & ride)

**Construction** (for example concerns regarding noise, dust and construction vehicle access)

**Any other feedback**