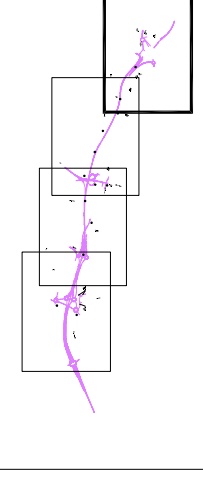


- KEY**
- (A) BARGEDDIE TO CROSSHILL PROPOSED FARM ACCOMMODATION BRIDGE
  - (B) A752/ NON 75 UNDERPASS
  - (C) PROPOSED SHOWCASE CINEMA FOOTBRIDGE
  - (D) PROPOSED BANKHEAD FARM ACCOMMODATION BRIDGE
  - (E) PROPOSED SHAWHEAD FARM ACCOMMODATION BRIDGE
  - (F) SHAWHEAD INTERCHANGE
  - (G) PROPOSED ORCHARD FARM ACCOMMODATION BRIDGE
  - (J) PROPOSED GARBROE/ A8 FOOTBRIDGE
  - (K) EUROCENTRAL INTERCHANGE
  - (L) CHAPELHALL INTERCHANGE
  - (M)

- KEY**
- PROPOSED FOOT/ CYCLE PATHS
  - PROPOSED PATH CROSSINGS
  - PROPOSED CYCLE ROUTE DIVERSION
  - EXISTING PATH
  - EXISTING CYCLE PATH
  - N/C PROPOSED LONG DISTANCE PATH
  - PROPOSED M8 GENERAL ALIGNMENT



CLIENT: PROJECT TITLE: **M8 Bailieston to Newhouse Updated 2007**

ENGINEERS: **Mouchel FAIRHURST** IN ASSOCIATION WITH **SIAS** YA

DRAWING TITLE: **STAGE 3 NMU MITIGATION PROPOSALS**

SCALE: 1:10000 DRAWING NO: **FIGURE 13.4a** REV: **A**

This map is based on Ordnance Survey material with the permission of Ordnance Survey on behalf of the Controller of Her Majesty's Stationery Office. Crown Copyright. Unauthorised reproduction is prohibited. No liability is accepted for any loss or damage arising from the use of this information. Scottish Executive 1000205410 Year of Publication

DESIGN BY:	DATE:	CHECKED BY:	DATE:
AM	25.06.07	AM	25.06.07
DRAWN BY:	DATE:	APPROVED BY:	DATE:
LM	25.06.07	IM	25.06.07

REV	AMENDMENTS	BY	CHKD	APPD	DATE
A	UPDATED 2007	LM	AM	IM	08/07

