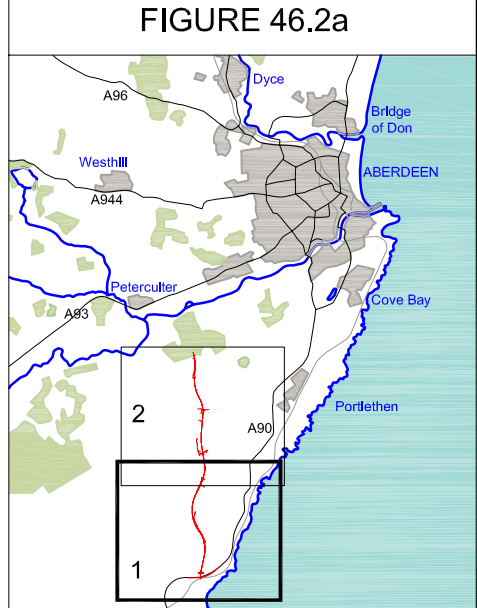


Continued from Sheet 2 of 2 (Figure 46.2b)



- LEGEND**
- Proposed Route (Engineering Profile 07/09/06)
 - Forestry Commission Woodland
 - Residential Area
 - Educational Public/Recreational Commercial } Community Facilities
 - Future New Communities
 - Bus Routes
 - School Catchment Areas
 - Primary School Boundary
 - Secondary School Boundary
 - Charleston School Primary School
 - Culls Academy Secondary School

Rev	Date	Purpose of Revision	Drwn	Chkd	Appd

95 Bothwell Street, Glasgow, G2 7HX, UK
Tel: 0141 204 2511 Fax: 0141 226 3109
www.jacobsabtie.com

Client

Aberdeen Western Peripheral Route

Project

Aberdeen Western Peripheral Route
Environmental Statement, Part D - Fastlink

Title

Community Effects
Sheet 1 of 2

Drawing Status	FINAL
JB No.	0010332
Figure No.	FIGURE 46.2a
Scale	1:25,000
Drawn	MY
Checked	VR
Approved	SH
Date	Dec, 2006

This drawing is not to be used in whole or part other than for the intended purpose and project as defined on this drawing. Refer to the contract for full terms and conditions. Maps produced by Jacobs UK Ltd. This map should NOT be rescaled. Copyright reserved.

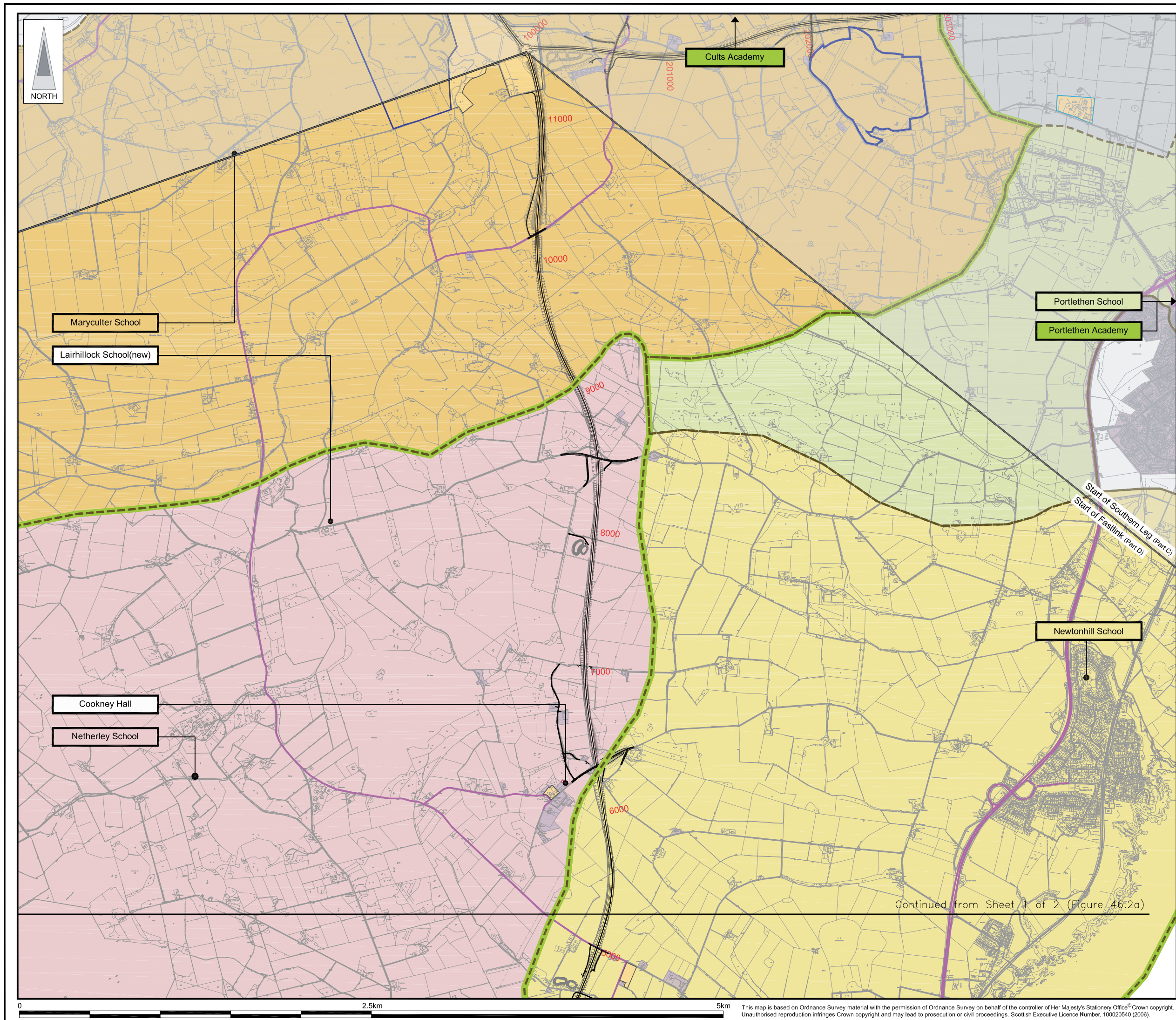


FIGURE 46.2b

LEGEND

- Proposed Route (Engineering Profile 07/09/06)
- Forestry Commission Woodland
- Residential Area
- Educational Public/Recreational Commercial } Community Facilities
- Future New Communities
- Bus Routes
- School Catchment Areas**
 - Primary School Boundary
 - Secondary School Boundary
 - Charleston School Primary School
 - Cults Academy Secondary School

Rev	Date	Purpose of Revision	Drwn	Chkd	Appd
<div><p>95 Bothwell Street, Glasgow, G2 7HX, UK Tel: 0141 204 2511 Fax: 0141 226 3109 www.jacobsabtle.com</p></div>					
Client					
Project		Aberdeen Western Peripheral Route Environmental Statement, Part D - Fastlink			
Title		Community Effects Sheet 2 of 2			
Drawing Status		FINAL			
JB No.		0010332			
Figure No.		FIGURE 46.2b			
Scale		1:25,000			
Drawn		Checked		Approved	
MY		VR		SH	

This drawing is not to be used in whole or part other than for the intended purpose and project as defined on this drawing. Refer to the contract for full terms and conditions. Maps produced by Jacobs UK Ltd. This map should NOT be rescaled. Copyright reserved.