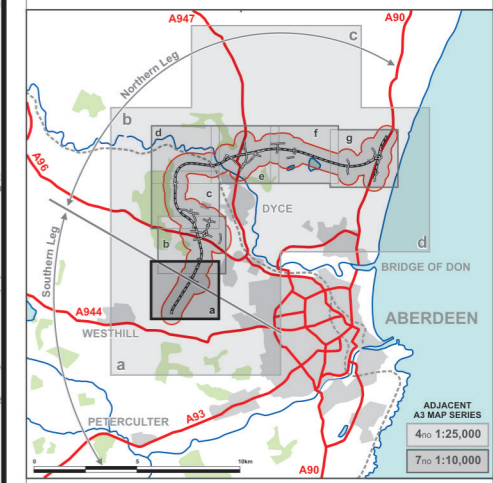


Continued on Sheet 2 of 7 (Figure 8.2b)

FIGURE 8.2a



- LEGEND**
- Proposed Route  
(Engineering Profile 04/05/2007)
  - Minimum Study Area  
250m from centre of Proposed Route
  - Groundwater Contours (m AOD)
  - Excavated Areas
  - Private Groundwater Well Supply
  - Private Groundwater Well Supply (location to be confirmed)\*
  - Spring
  - Spring (location to be confirmed)\*
  - Potential High Density Well Area
  - Areas noted as Peat on BGS map

\* Confirmation will be obtained following field work scheduled for June/July 2007.

Rev	Date	Purpose of Revision	Dwn	Chkd	Appd

**JE JACOBS**  
 95 Bothwell Street, Glasgow, G2 7HX, UK  
 Tel: 0141 204 2511 Fax: 0141 226 3109  
 www.jacobsabtie.com

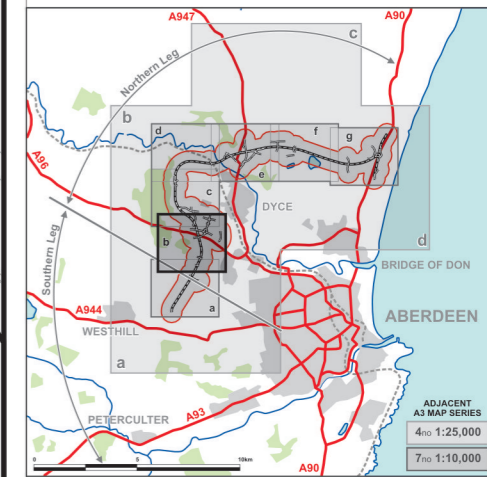
Client: **Aberdeen Western Peripheral Route**

Project: **Aberdeen Western Peripheral Route**  
 Environmental Statement, Part B - Northern Leg

Title: **Hydrogeologically Related Features**  
 Sheet 1 of 7

Drawing Status	FINAL	Revisions	
JB No.	0010332	Date	July 2007
Figure No.	FIGURE 8.2a	Drawn	RB
Scale	1:10,000	Checked	VSM/FF
		Approved	SH

FIGURE 8.2b



- LEGEND**
- Proposed Route  
(Engineering Profile 04/05/2007)
  - Minimum Study Area  
250m from centre of Proposed Route
  - Groundwater Contours (m AOD)
  - Excavated Areas
  - Private Groundwater Well Supply
  - Private Groundwater Well Supply (location to be confirmed)\*
  - Spring
  - Spring (location to be confirmed)\*
  - Potential High Density Well Area
  - Areas noted as Peat on BGS map

\* Confirmation will be obtained following field work scheduled for June/July 2007.

Rev	Date	Purpose of Revision	Drwn	Chkd	Appd

**JE JACOBS**  
 95 Bothwell Street, Glasgow, G2 7HX, UK  
 Tel: 0141 204 2511 Fax: 0141 226 3109  
 www.jacobsbabtie.com

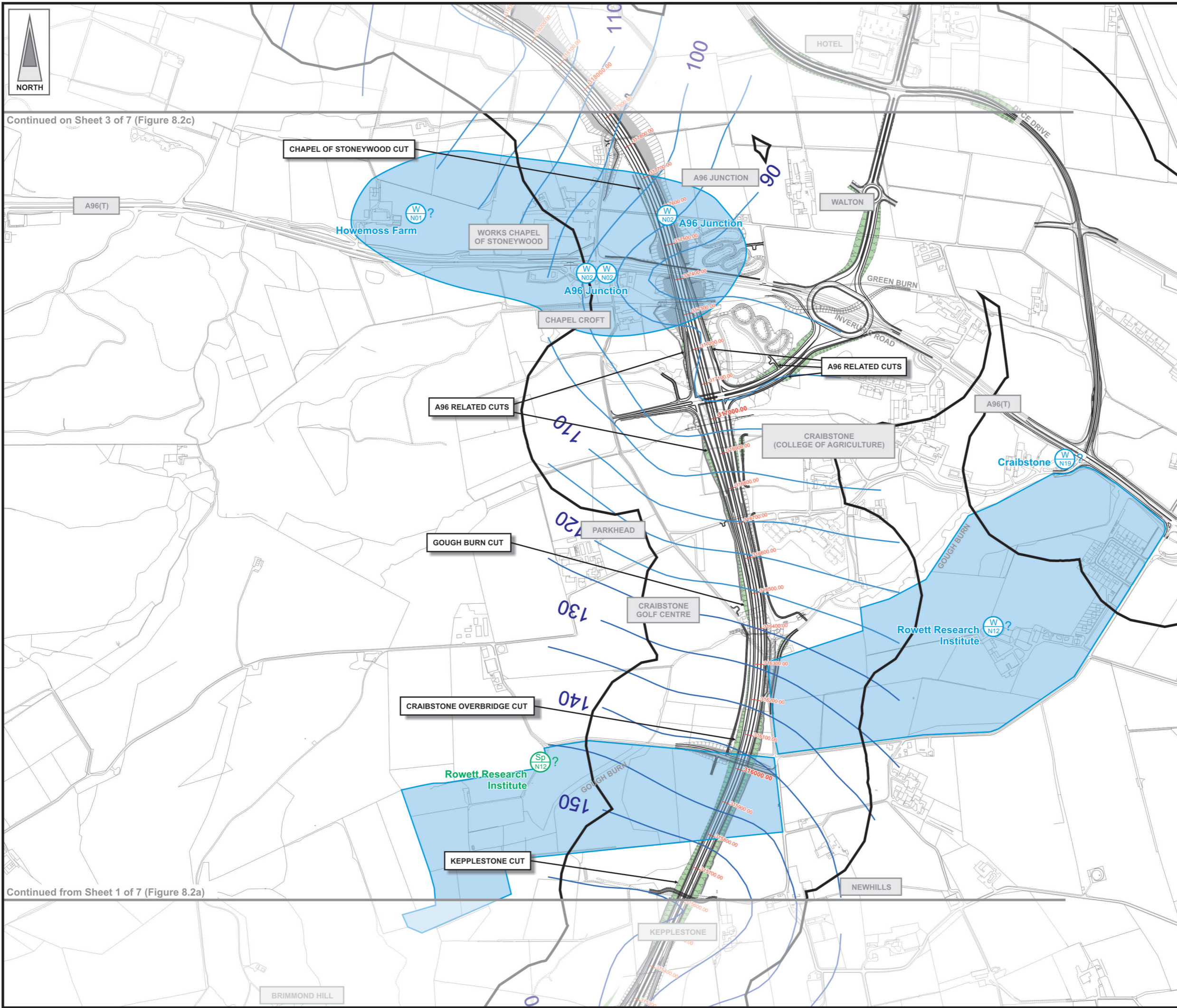
Client: **Aberdeen Western Peripheral Route**

Project: **Aberdeen Western Peripheral Route Environmental Statement, Part B - Northern Leg**

Title: **Hydrogeologically Related Features Sheet 2 of 7**

Drawing Status	FINAL	Revisions	
JB No.	0010332	Date	July 2007
Figure No.	FIGURE 8.2b	Approved	SH
Scale	1:10,000	Checked	VSM/FF
Drawn	RB	signature	signature

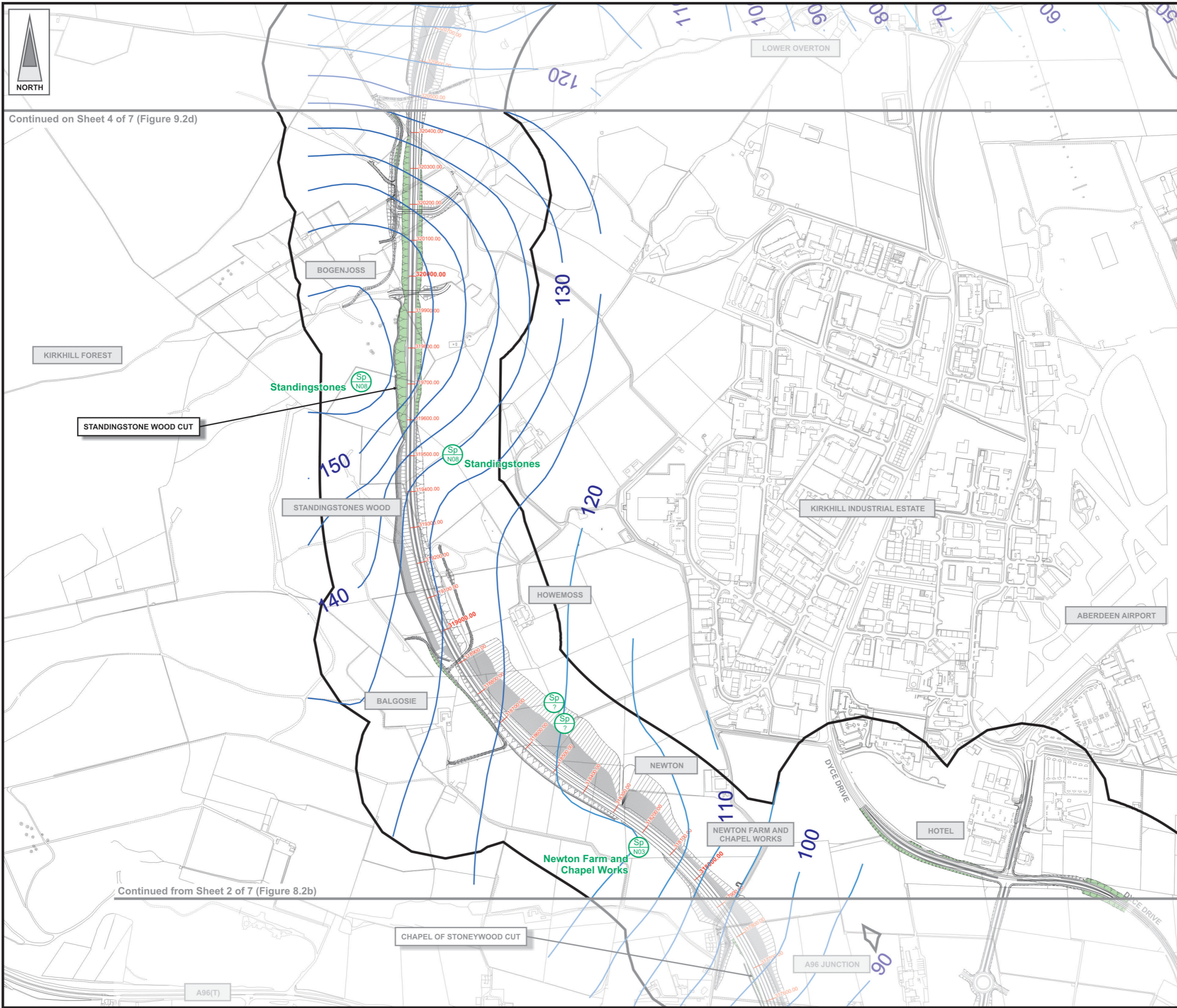
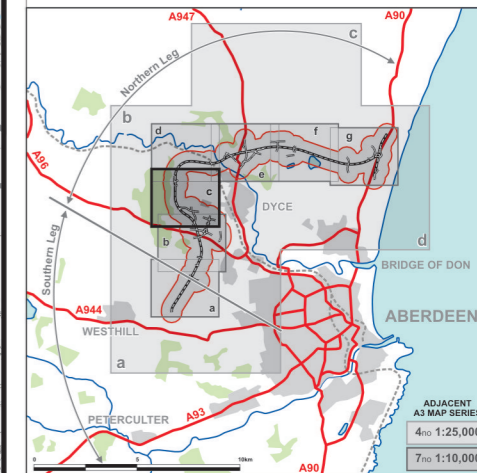
This drawing is not to be used in whole or part other than for the intended purpose and project as defined on this drawing. Refer to the contract for full terms and conditions. Maps produced by Jacobs UK Ltd. This map should NOT be rescaled. Copyright reserved.



Continued on Sheet 3 of 7 (Figure 8.2c)

Continued from Sheet 1 of 7 (Figure 8.2a)

FIGURE 8.2c



LEGEND

- Proposed Route  
(Engineering Profile 04/05/2007)
- Minimum Study Area  
250m from centre of Proposed Route
- Groundwater Contours (m AOD)
- Excavated Areas
- Private Groundwater Well Supply
- Private Groundwater Well Supply (location to be confirmed)\*
- Spring
- Spring (location to be confirmed)\*
- Potential High Density Well Area
- Areas noted as Peat on BGS map

\* Confirmation will be obtained following field work scheduled for June/July 2007.

Rev	Date	Purpose of Revision	Dwn	Chkd	Appd

**JE JACOBS**  
 95 Bothwell Street, Glasgow, G2 7HX, UK  
 Tel: 0141 204 2511 Fax: 0141 226 3109  
 www.jacobsbabtie.com

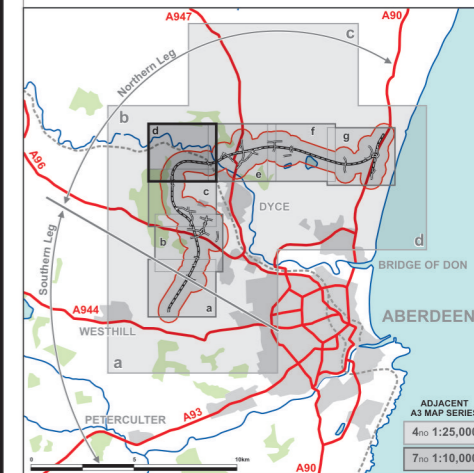
Client: **Aberdeen Western Peripheral Route**

Project: **Aberdeen Western Peripheral Route**  
 Environmental Statement, Part B - Northern Leg

Title: **Hydrogeologically Related Features**  
 Sheet 3 of 7

Drawing Status	FINAL	Revisions	
JB No.	0010332	Date	July 2007
Figure No.	FIGURE 8.2c	Checked	VSM/FF
Scale	1:10,000	Approved	SH
Drawn	RB	signature	signature

FIGURE 8.2d



LEGEND

- Proposed Route  
(Engineering Profile 04/05/2007)
- Minimum Study Area  
250m from centre of Proposed Route
- Groundwater Contours (m AOD)
- Excavated Areas
- Private Groundwater Well Supply
- Private Groundwater Well Supply (location to be confirmed)\*
- Spring
- Spring (location to be confirmed)\*
- Potential High Density Well Area
- Areas noted as Peat on BGS map

\* Confirmation will be obtained following field work scheduled for June/July 2007.

Rev	Date	Purpose of Revision	Drwn	Chkd	Appd

**JE JACOBS**  
 95 Bothwell Street, Glasgow, G2 7HX, UK  
 Tel: 0141 204 2511 Fax: 0141 226 3109  
 www.jacobsbattle.com

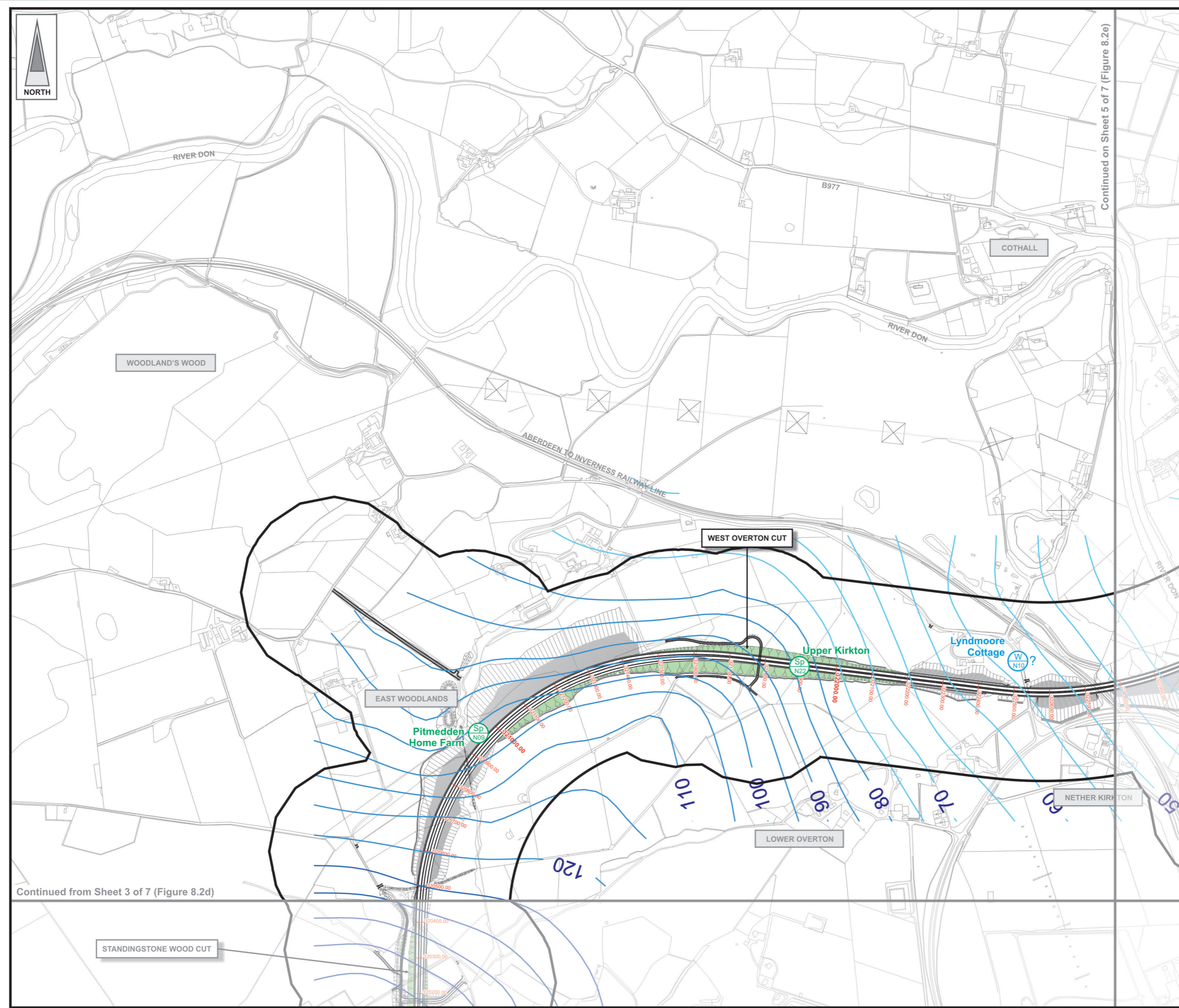
Client: **Aberdeen Western Peripheral Route**

Project: **Aberdeen Western Peripheral Route**  
 Environmental Statement, Part B - Northern Leg

Title: **Hydrogeologically Related Features**  
 Sheet 4 of 7

Drawing Status	FINAL	Revisions	
JB No.	0010332	Date	July 2007
Figure No.	FIGURE 8.2d	Drawn	RB
Scale	1:10,000	Checked	VSM/FF
		Approved	SH

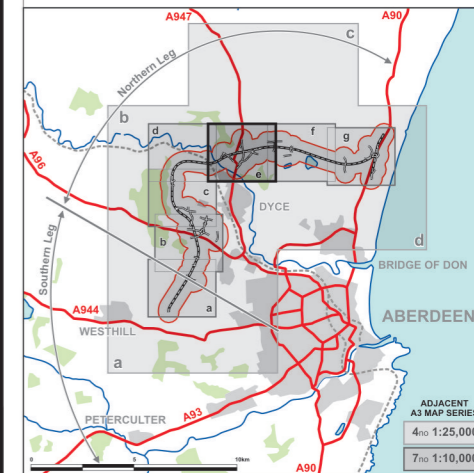
This drawing is not to be used in whole or part other than for the intended purpose and project as defined on this drawing. Refer to the contract for full terms and conditions. Maps produced by Jacobs UK Ltd. This map should NOT be rescaled. Copyright reserved.



Continued from Sheet 3 of 7 (Figure 8.2d)

Continued on Sheet 5 of 7 (Figure 8.2e)

FIGURE 8.2e



LEGEND

- Proposed Route  
(Engineering Profile 04/05/2007)
- Minimum Study Area  
250m from centre of Proposed Route
- Groundwater Contours (m AOD)
- Excavated Areas
- Private Groundwater Well Supply
- Private Groundwater Well Supply (location to be confirmed)\*
- Spring
- Spring (location to be confirmed)\*
- Potential High Density Well Area
- Areas noted as Peat on BGS map

\* Confirmation will be obtained following field work scheduled for June/July 2007.

Rev	Date	Purpose of Revision	Drwn	Chkd	Appd

**JE JACOBS**  
 95 Bothwell Street, Glasgow, G2 7HX, UK  
 Tel: 0141 204 2511 Fax: 0141 226 3109  
 www.jacobsbabtie.com

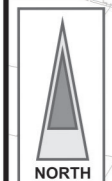
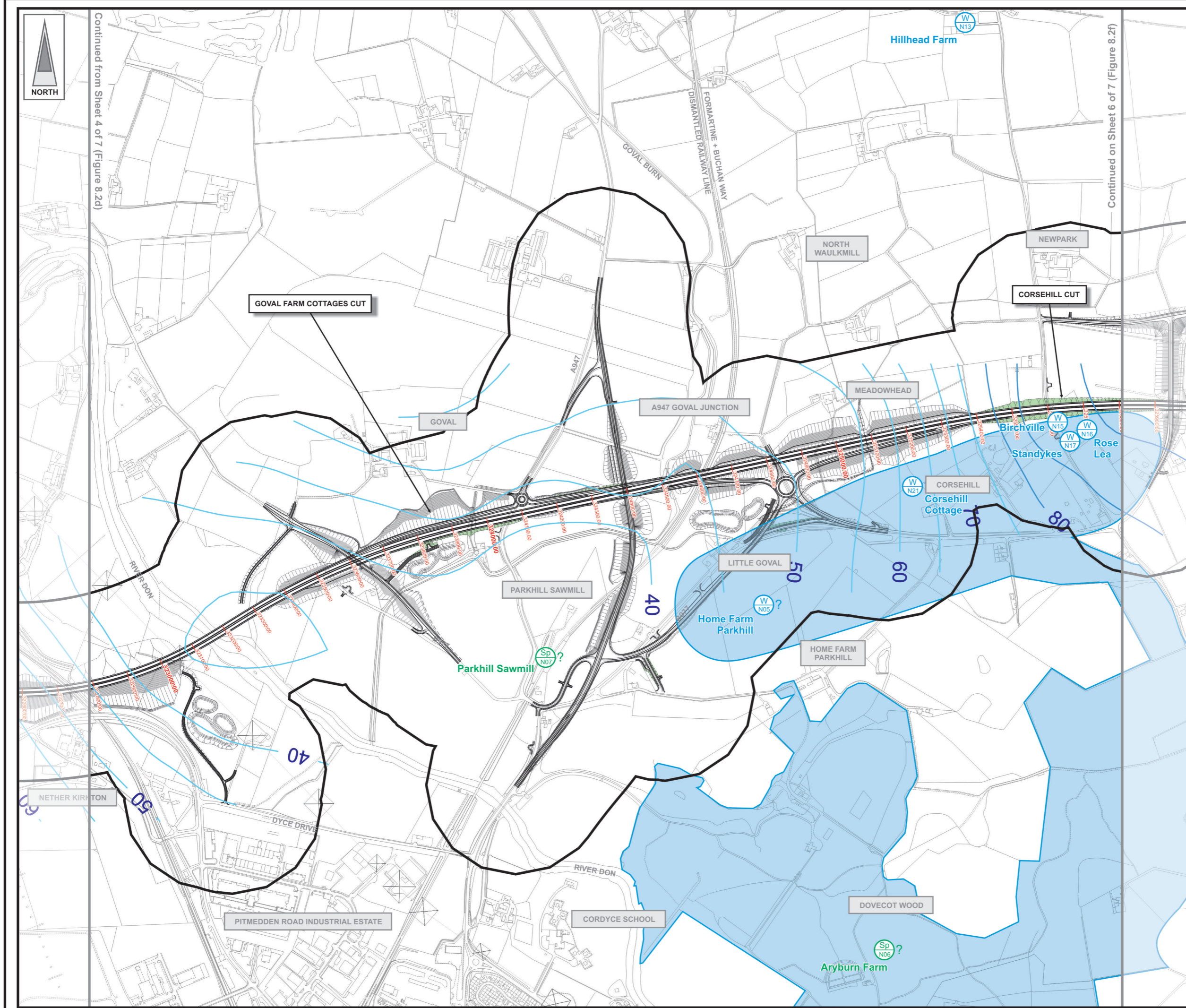
Client **Aberdeen Western Peripheral Route**

Project **Aberdeen Western Peripheral Route  
Environmental Statement, Part B - Northern Leg**

Title **Hydrogeologically Related Features  
Sheet 5 of 7**

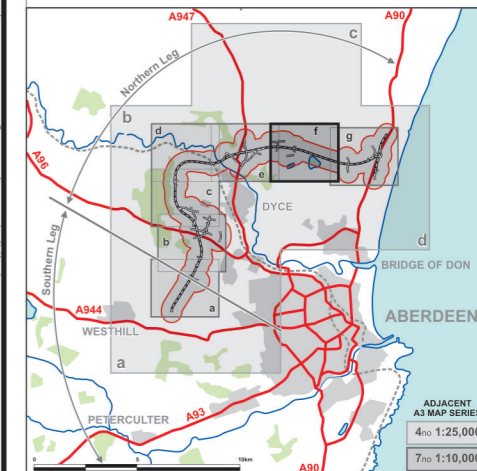
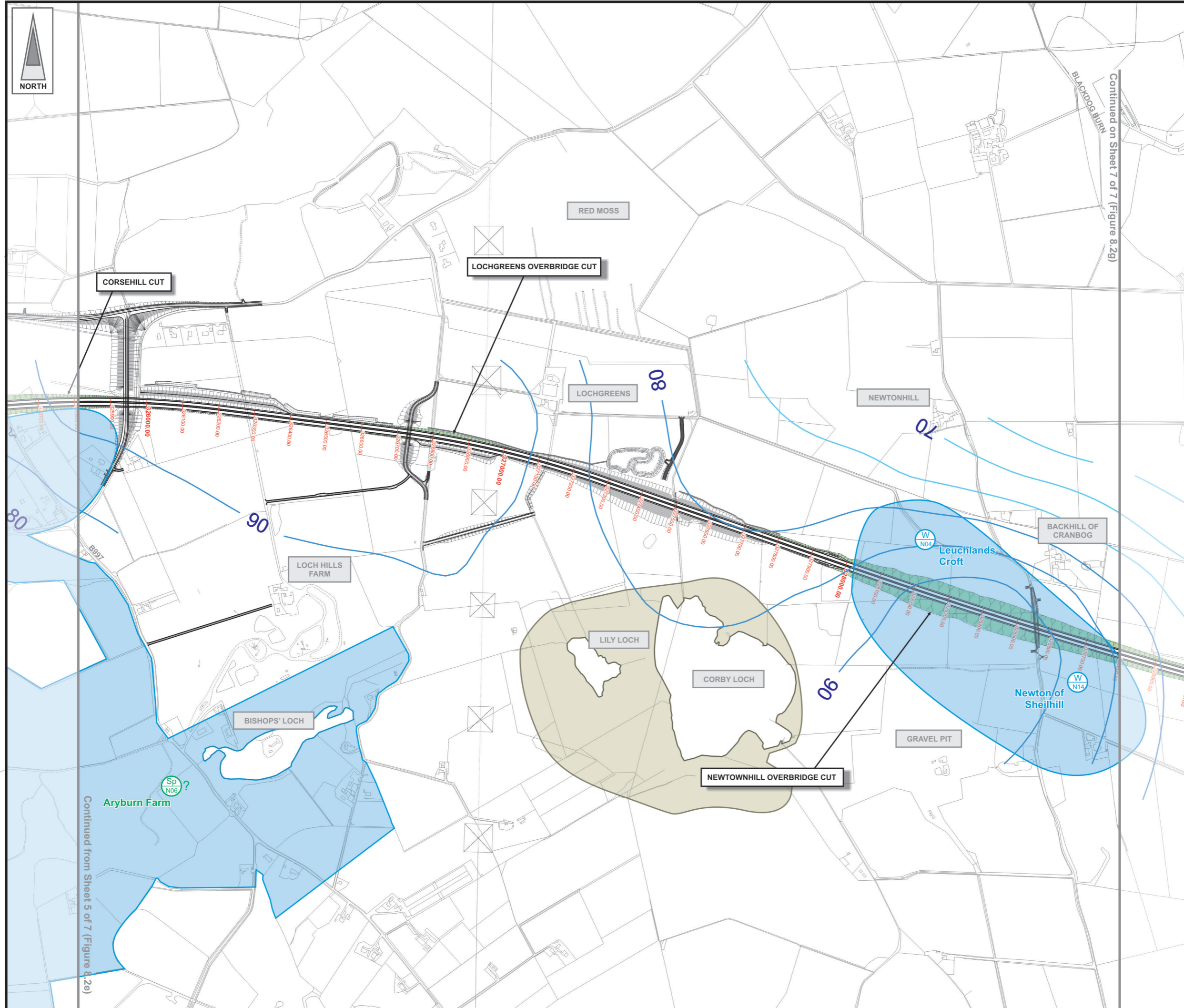
Drawing Status	FINAL	Revisions	
JB No.	0010332	Date	July 2007
Figure No.	FIGURE 8.2e	Drawn	RB
Scale	1:10,000	Checked	VSM/FF
		Approved	SH

This drawing is not to be used in whole or part other than for the intended purpose and project as defined on this drawing. Refer to the contract for full terms and conditions. Maps produced by Jacobs UK Ltd. This map should NOT be rescaled. Copyright reserved.



Based upon the Ordnance Survey mapping with the permission of Ordnance Survey on behalf of the Controller of Her Majesty's Stationery Office © Crown Copyright 2007. Unauthorised reproduction infringes Crown Copyright and may lead to prosecution or civil proceedings. Scottish Executive Licence number: SE100020540 (2007).

FIGURE 8.2f



- LEGEND**
- Proposed Route  
(Engineering Profile 04/05/2007)
  - Minimum Study Area  
250m from centre of Proposed Route
  - Groundwater Contours (m AOD)
  - Excavated Areas
  - Private Groundwater Well Supply
  - Private Groundwater Well Supply (location to be confirmed)\*
  - Spring
  - Spring (location to be confirmed)\*
  - Potential High Density Well Area
  - Areas noted as Peat on BGS map

\* Confirmation will be obtained following field work scheduled for June/July 2007.

Rev	Date	Purpose of Revision	Drwn	Chkd	Appd

**JE JACOBS**  
 95 Bothwell Street, Glasgow, G2 7HX, UK  
 Tel: 0141 204 2511 Fax: 0141 226 3109  
 www.jacobsbabtie.com

Client: **Aberdeen Western Peripheral Route**

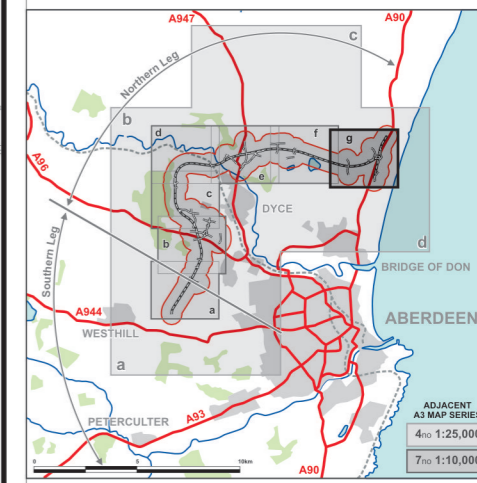
Project: **Aberdeen Western Peripheral Route**  
 Environmental Statement, Part B - Northern Leg

Title: **Hydrogeologically Related Features**  
 Sheet 6 of 7

Drawing Status	FINAL	Revisions	
JB No.	0010332	Date	July 2007
Figure No.	FIGURE 8.2f	Drawn	RB
Scale	1:10,000	Checked	VSM/FF
		Approved	SH

This drawing is not to be used in whole or part other than for the intended purpose and project as defined on this drawing. Refer to the contract for full terms and conditions. Maps produced by Jacobs UK Ltd. This map should NOT be rescaled. Copyright reserved.

**FIGURE 8.2g**



- LEGEND**
-  Proposed Route  
(Engineering Profile 04/05/2007)
  -  Minimum Study Area  
250m from centre of Proposed Route
  -  Groundwater Contours (m AOD)
  -  Excavated Areas
  -  Private Groundwater Well Supply
  -  Private Groundwater Well Supply (location to be confirmed)\*
  -  Spring
  -  Spring (location to be confirmed)\*
  -  Potential High Density Well Area
  -  Areas noted as Peat on BGS map

\* Confirmation will be obtained following field work scheduled for June/July 2007.

Rev	Date	Purpose of Revision	Drwn	Chkd	Appd

**JE JACOBS**  
 95 Bothwell Street, Glasgow, G2 7HX, UK  
 Tel: 0141 204 2511 Fax: 0141 226 3109  
 www.jacobsbabtie.com

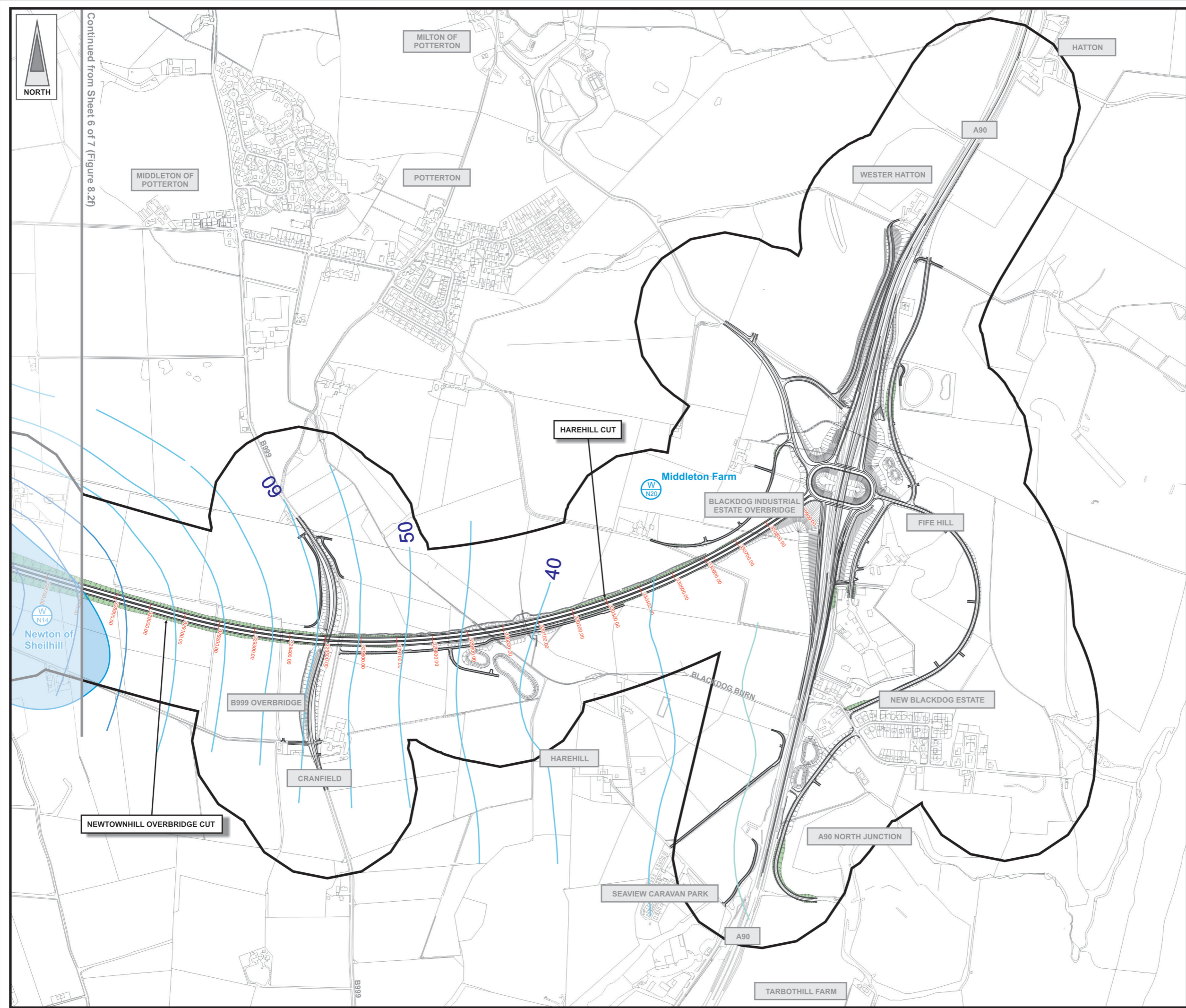
Client: **Aberdeen Western Peripheral Route**

Project: **Aberdeen Western Peripheral Route Environmental Statement, Part B - Northern Leg**

Title: **Hydrogeologically Related Features Sheet 7 of 7**

Drawing Status	FINAL	Revisions	
JB No.	0010332	Date	July 2007
Figure No.	<b>FIGURE 8.2g</b>	Drawn	RB
Scale	1:10,000	Checked	VSM/FF
		Approved	SH

This drawing is not to be used in whole or part other than for the intended purpose and project as defined on this drawing. Refer to the contract for full terms and conditions. Maps produced by Jacobs UK Ltd. This map should NOT be rescaled. Copyright reserved.



Continued from Sheet 6 of 7 (Figure 8.2f)

