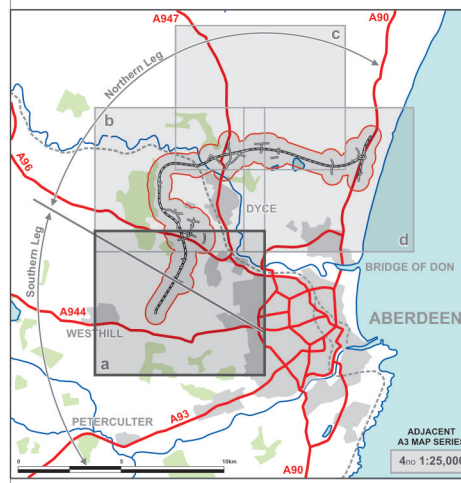
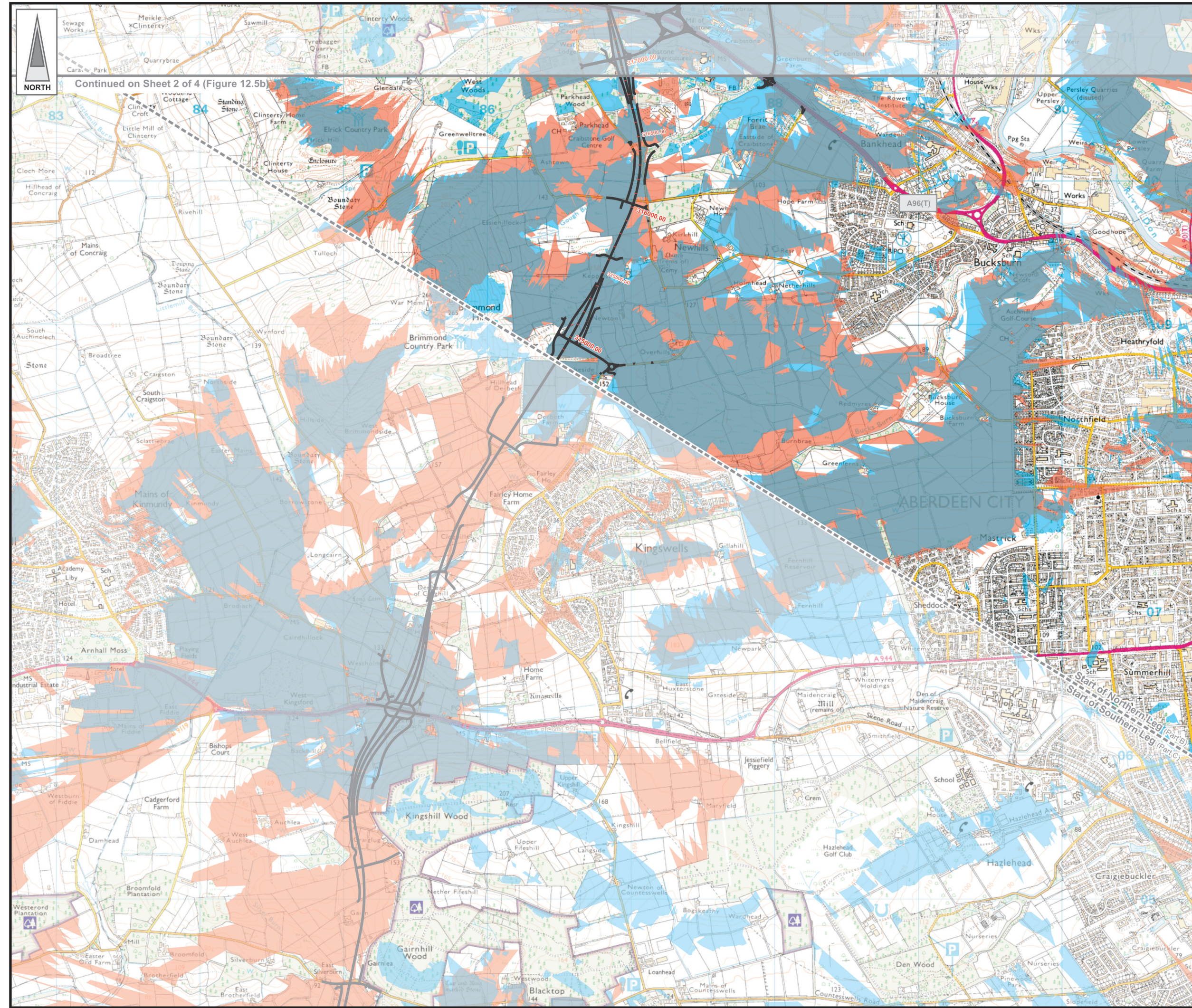






FIGURE 12.5a



- LEGEND**
-  Proposed Route
(Engineering Profile 04/05/07)
 -  Daytime Visual Envelope
 -  Nighttime Visual Envelope
 -  Day and Night Visual Envelope

Rev	Date	Purpose of Revision	Drwn	Chkd	Appd

JE JACOBS
 95 Bothwell Street, Glasgow, G2 7HX, UK
 Tel: 0141 204 2511 Fax: 0141 226 3109
 www.jacobsabbie.com

Client: **Aberdeen Western Peripheral Route**

Project: **Aberdeen Western Peripheral Route Environmental Statement, Part B - Northern Leg**

Title: **Theoretical Visual Envelope Map (Winter Year of Opening - Day and Night) Sheet 1 of 4**

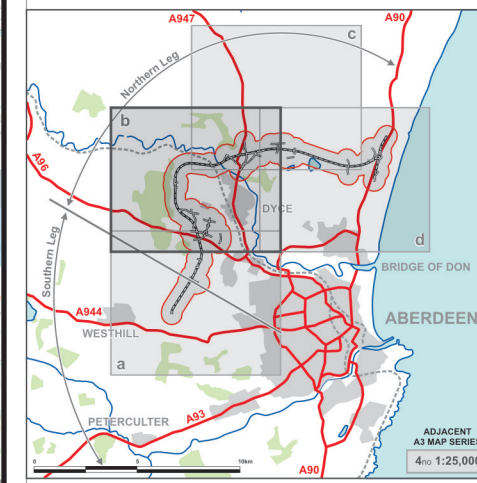
Drawing Status	FINAL	Revisions	
JB No.	0010332	Date	July 2007
Figure No.	FIGURE 12.5a	Checked	SH
Scale	1:25,000	Approved	SH
Drawn	SHF		







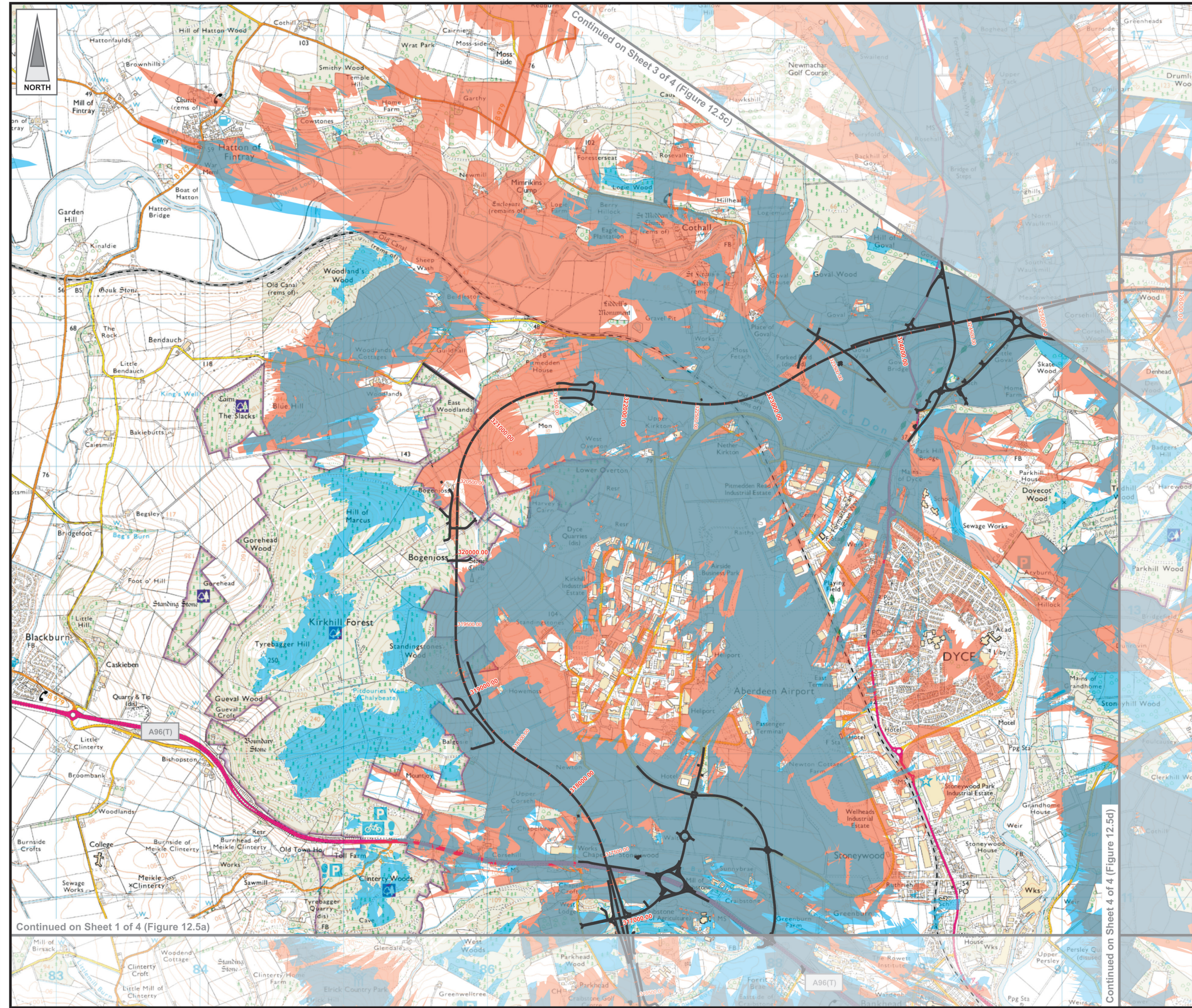
This map is based on Ordnance Survey material with the permission of Ordnance Survey on behalf of the controller of Her Majesty's Stationery Office © Crown copyright. Unauthorised reproduction infringes Crown copyright and may lead to prosecution or civil proceedings. Aberdeen City Council, 100023401 (2007).
 This drawing is not to be used in whole or part other than for the intended purpose and project as defined on this drawing. Refer to the contract for full terms and conditions. Maps produced by Jacobs UK Ltd. This map should NOT be rescaled. Copyright reserved.

Continued on Sheet 3 of 4 (Figure 12.5c)

FIGURE 12.5b



- LEGEND**
-  Proposed Route
(Engineering Profile 04/05/07)
 -  Daytime Visual Envelope
 -  Nighttime Visual Envelope
 -  Day and Night Visual Envelope



Continued on Sheet 1 of 4 (Figure 12.5a)

Continued on Sheet 4 of 4 (Figure 12.5d)

Rev	Date	Purpose of Revision	Drwn	Chkd	Appd

JE JACOBS
 95 Bothwell Street, Glasgow, G2 7HX, UK
 Tel: 0141 204 2511 Fax: 0141 226 3109
 www.jacobsbatle.com

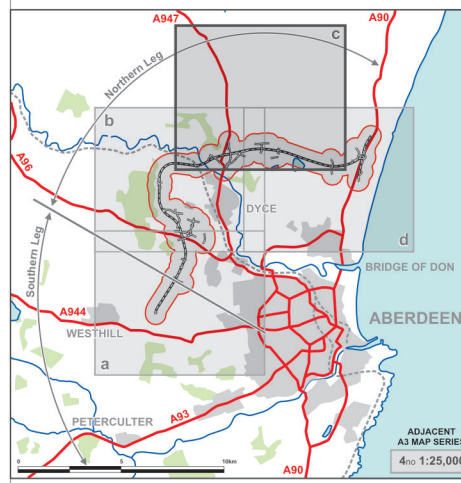
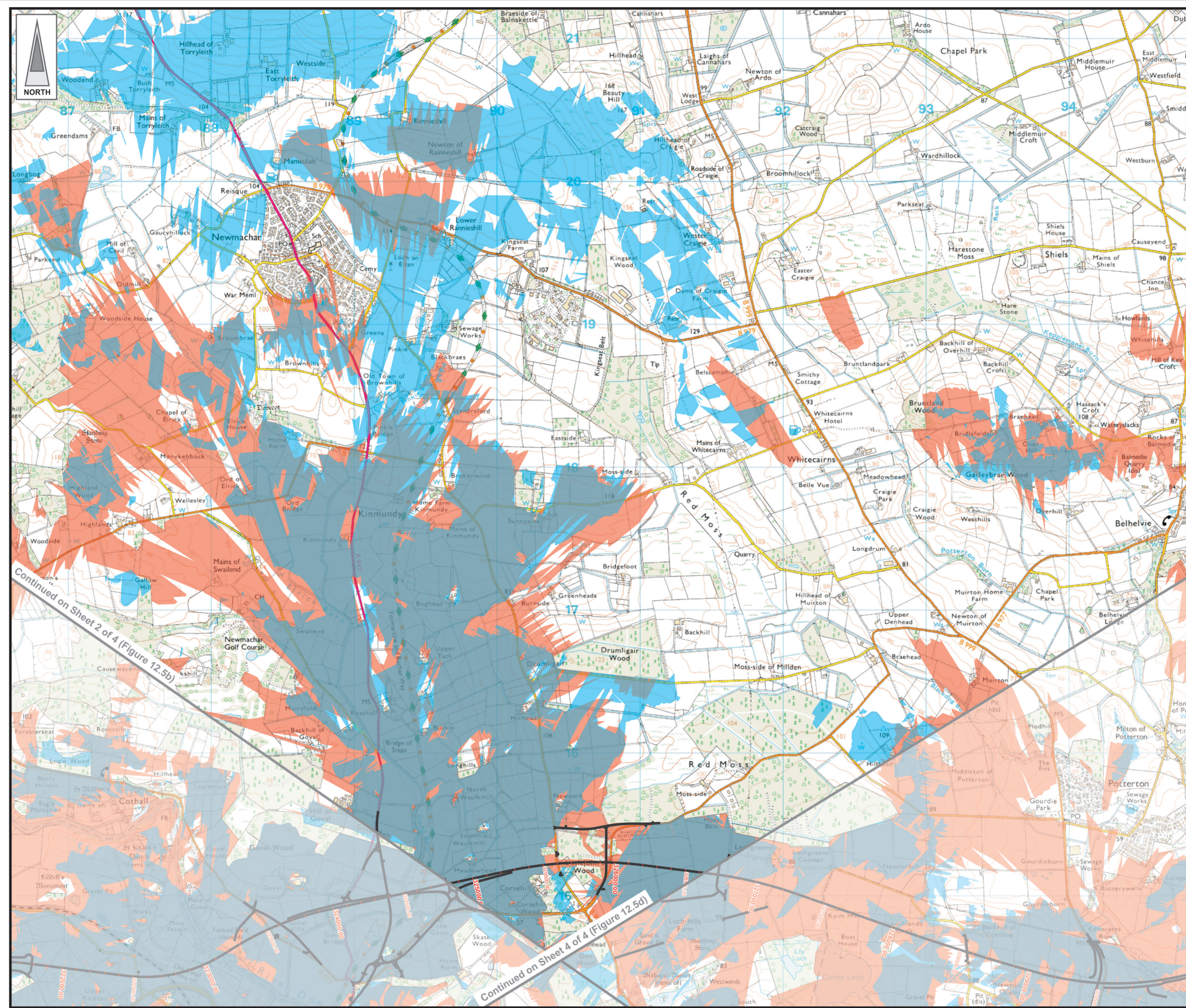
Client	Aberdeen Western Peripheral Route				
Project	Aberdeen Western Peripheral Route Environmental Statement, Part B - Northern Leg				
Title	Theoretical Visual Envelope Map (Winter Year of Opening - Day and Night) Sheet 2 of 4				

Drawing Status	FINAL	Revisions	
JB No.	0010332	Date	July 2007
Figure No.	FIGURE 12.5b	Checked	SH
Scale	1:25,000	Approved	SH
Drawn	SHF	Checked	JT







This map is based on Ordnance Survey material with the permission of Ordnance Survey on behalf of the controller of Her Majesty's Stationery Office © Crown copyright. Unauthorised reproduction infringes Crown copyright and may lead to prosecution or civil proceedings. Aberdeen City Council, 100023401 (2007).
 This drawing is not to be used in whole or part other than for the intended purpose and project as defined on this drawing. Refer to the contract for full terms and conditions. Maps produced by Jacobs UK Ltd. This map should NOT be rescaled. Copyright reserved.

FIGURE 12.5c



LEGEND

-  Proposed Route
(Engineering Profile 04/05/07)
-  Daytime Visual Envelope
-  Nighttime Visual Envelope
-  Day and Night Visual Envelope

Continued on Sheet 2 of 4 (Figure 12.5b)

Continued on Sheet 4 of 4 (Figure 12.5d)

Rev	Date	Purpose of Revision	Drwn	Chkd	Appd

JE JACOBS
 95 Bothwell Street, Glasgow, G2 7HX, UK
 Tel: 0141 204 2511 Fax: 0141 226 3109
 www.jacobsbatle.com

Client **Aberdeen Western Peripheral Route**

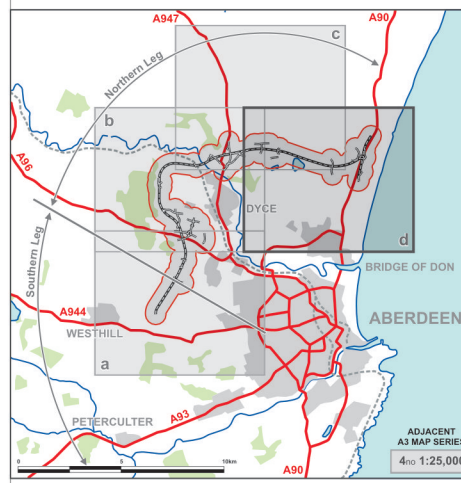
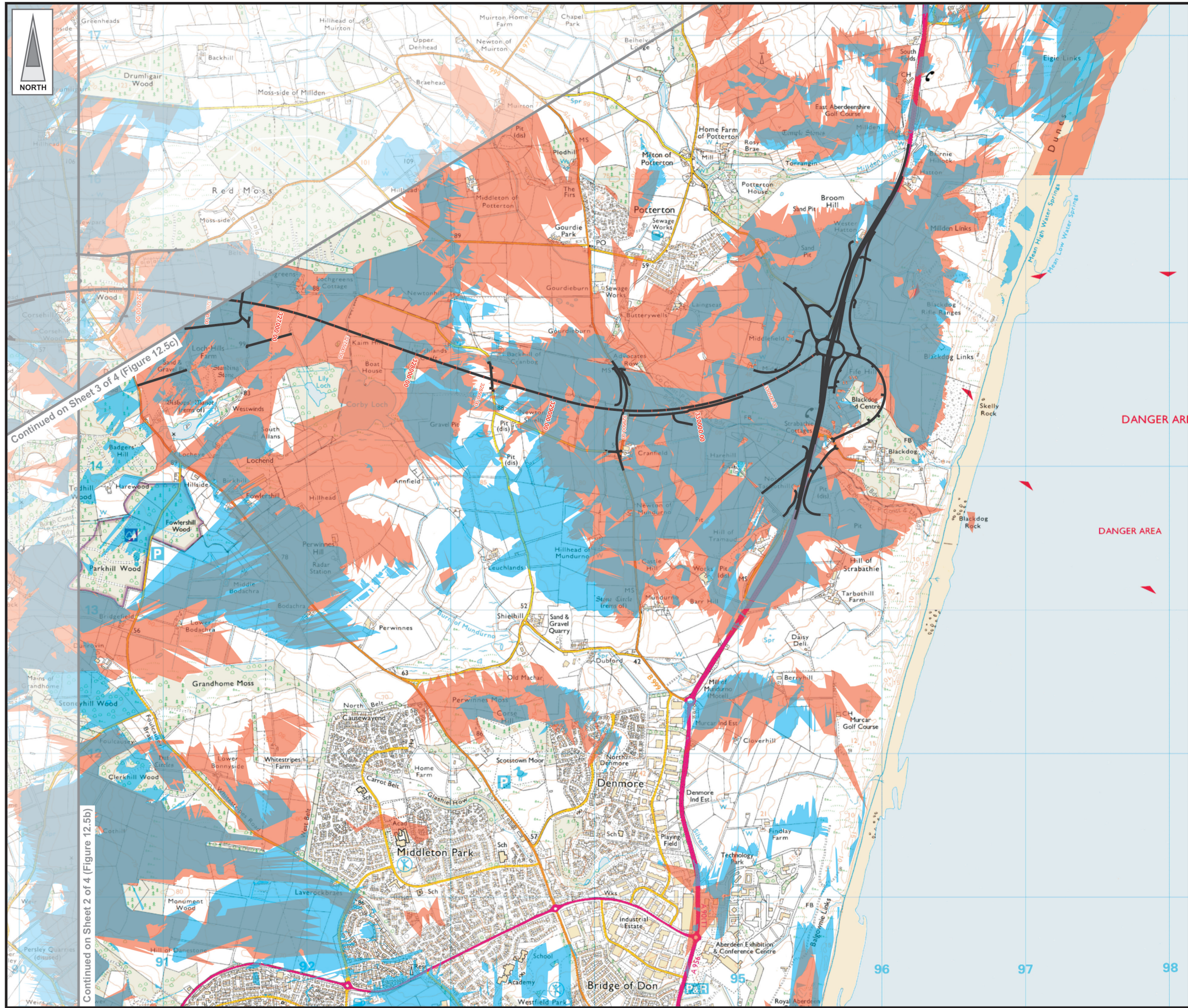
Project **Aberdeen Western Peripheral Route Environmental Statement, Part B - Northern Leg**





Title **Theoretical Visual Envelope Map (Winter Year of Opening - Day and Night) Sheet 3 of 4**

Drawing Status	FINAL	Revisions	
JB No.	0010332	Date	July 2007
Figure No.	FIGURE 12.5c	Approved	SH
Scale	1:25,000	Checked	JT
Drawn	SHF		

This map is based on Ordnance Survey material with the permission of Ordnance Survey on behalf of the controller of Her Majesty's Stationery Office © Crown copyright. Unauthorised reproduction infringes Crown copyright and may lead to prosecution or civil proceedings. Aberdeen City Council, 100023401 (2007).
 This drawing is not to be used in whole or part other than for the intended purpose and project as defined on this drawing. Refer to the contract for full terms and conditions. Maps produced by Jacobs UK Ltd. This map should NOT be rescaled. Copyright reserved.

FIGURE 12.5d



- LEGEND**
-  Proposed Route
(Engineering Profile 04/05/07)
 -  Daytime Visual Envelope
 -  Nighttime Visual Envelope
 -  Day and Night Visual Envelope

DANGER AREA

Rev	Date	Purpose of Revision	Drwn	Chkd	Appd

JE JACOBS
 95 Bothwell Street, Glasgow, G2 7HX, UK
 Tel: 0141 204 2511 Fax: 0141 226 3109
 www.jacobsbabtie.com

Client	Aberdeen Western Peripheral Route				
Project	Aberdeen Western Peripheral Route Environmental Statement, Part B - Northern Leg				
Title	Theoretical Visual Envelope Map (Winter Year of Opening - Day and Night) Sheet 4 of 4				
Drawing Status	FINAL				
JB No.	0010332				
Figure No.	FIGURE 12.5d	Revisions			
Scale	1:25,000	Date July 2007			
Drawn	SHF	Checked	JT	Approved	SH

This map is based on Ordnance Survey material with the permission of Ordnance Survey on behalf of the controller of Her Majesty's Stationery Office © Crown copyright. Unauthorised reproduction infringes Crown copyright and may lead to prosecution or civil proceedings. Aberdeen City Council, 100023401 (2007).