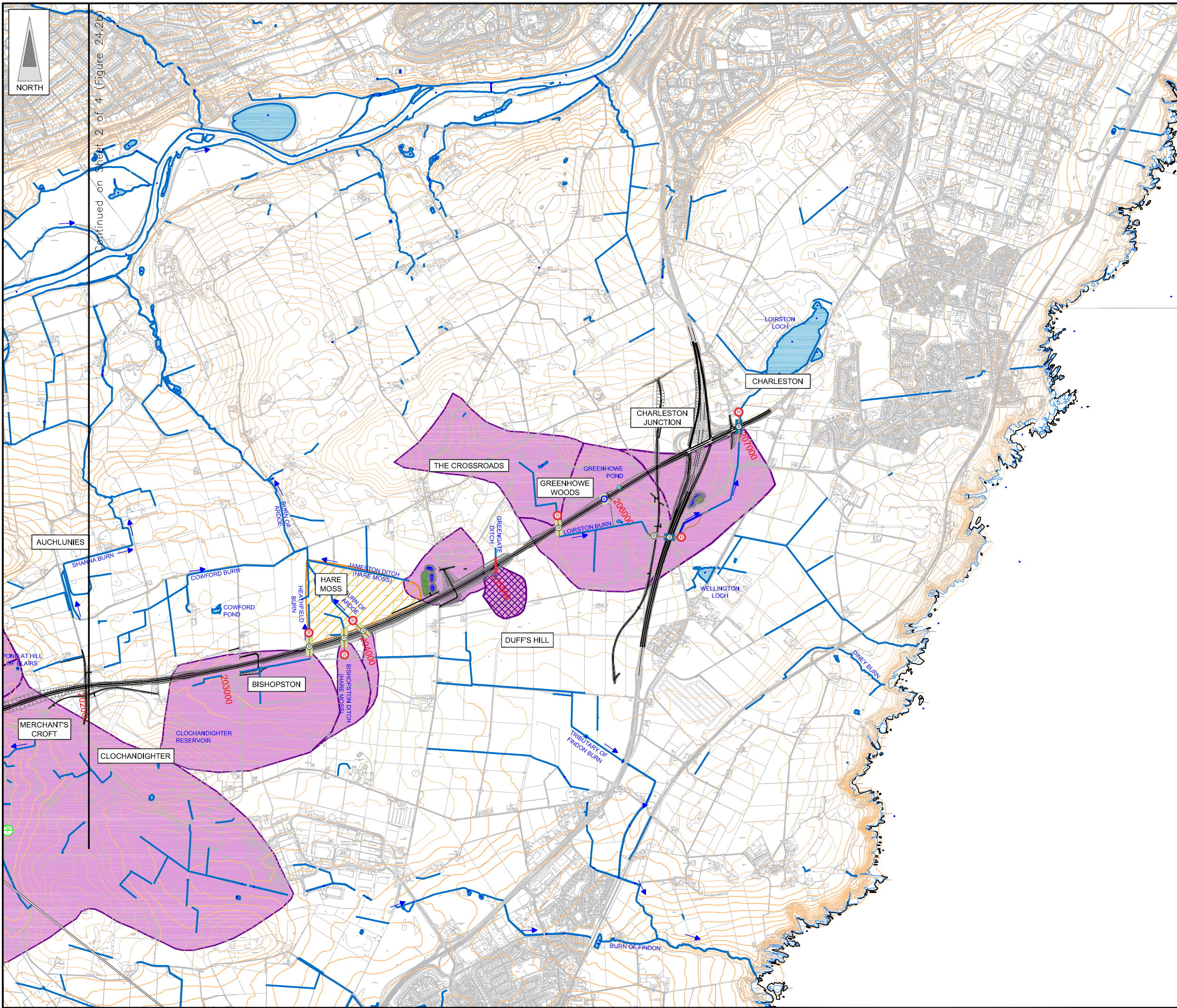
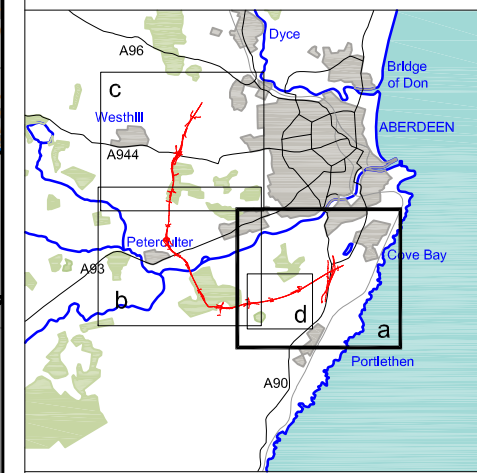


FIGURE 24.2a

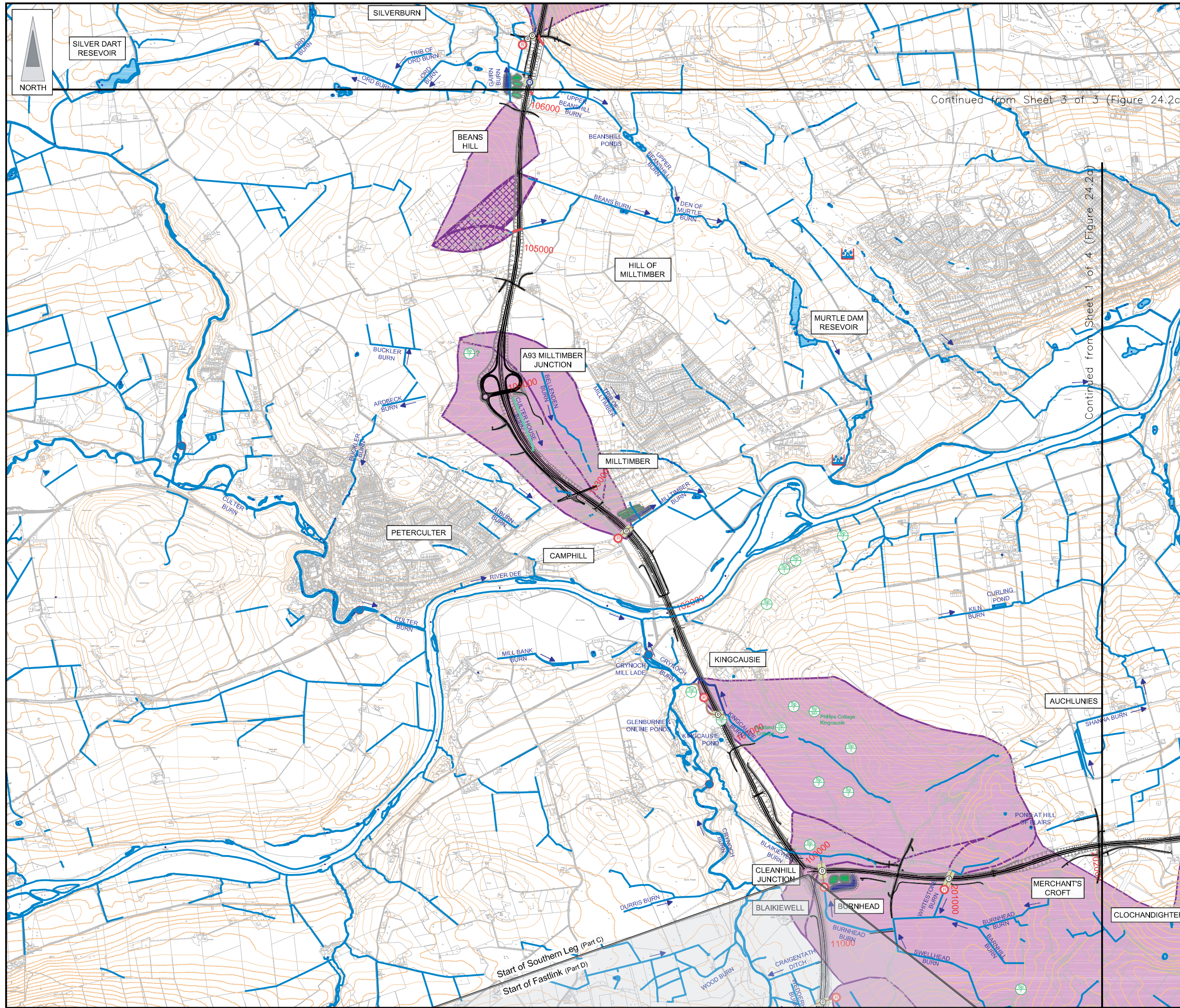
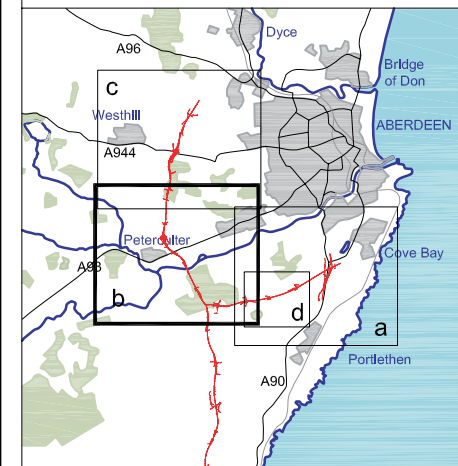


- LEGEND**
- Proposed Route (Engineering Profile 04/05/07)
 - Watercourses
 - Direction of Flow
 - Waterbody
 - Hydrological Feature Indicative Boundary
 - Natural Catchment Boundary
 - Dissected Catchment Boundary
 - Dissected Catchment Boundary outfalling to New Catchment
 - Spring Location
 - Private Groundwater Well Supply
 - Depressed Invert Culvert
 - Extension to Existing Culvert
 - Network Culvert
 - Stream Re-Alignment
 - Watercourse taken into pre-earthworks
 - Watercourse lost to stream re-alignment
 - Watercourse lost through Catchment Severance/filled in
 - Bridge
 - SEPA Flow Gauges
 - SEPA Spot Gauging Location
 - JACOBS Spot Gauging Location
 - SEPA Rain Gauge (Daily Recording and Tipping Bucket)
- Drainage Treatment**
- Detention Basin
 - Treatment Pond
 - Swale

JE JACOBS
 95 Bothwell Street, Glasgow, G2 7HX, UK
 Tel: 0141 204 2511 Fax: 0141 226 3109
 www.jacobstabtie.com

Client			
Project	Aberdeen Western Peripheral Route Environmental Statement, Part C - Southern Leg		
Title	Surface Water Hydrology Sheet 1 of 4		
Drawing Status	FINAL	Revisions	
JB No.	0010332		
Figure No.	FIGURE 24.2a	Date	July 2007
Scale	1:25,000	Checked	Approved
Drawn	MY	Checked	LB
		Approved	SH

FIGURE 24.2b



Continued from Sheet 3 of 3 (Figure 24.2c)

Continued from Sheet 1 of 4 (Figure 24.2a)

LEGEND

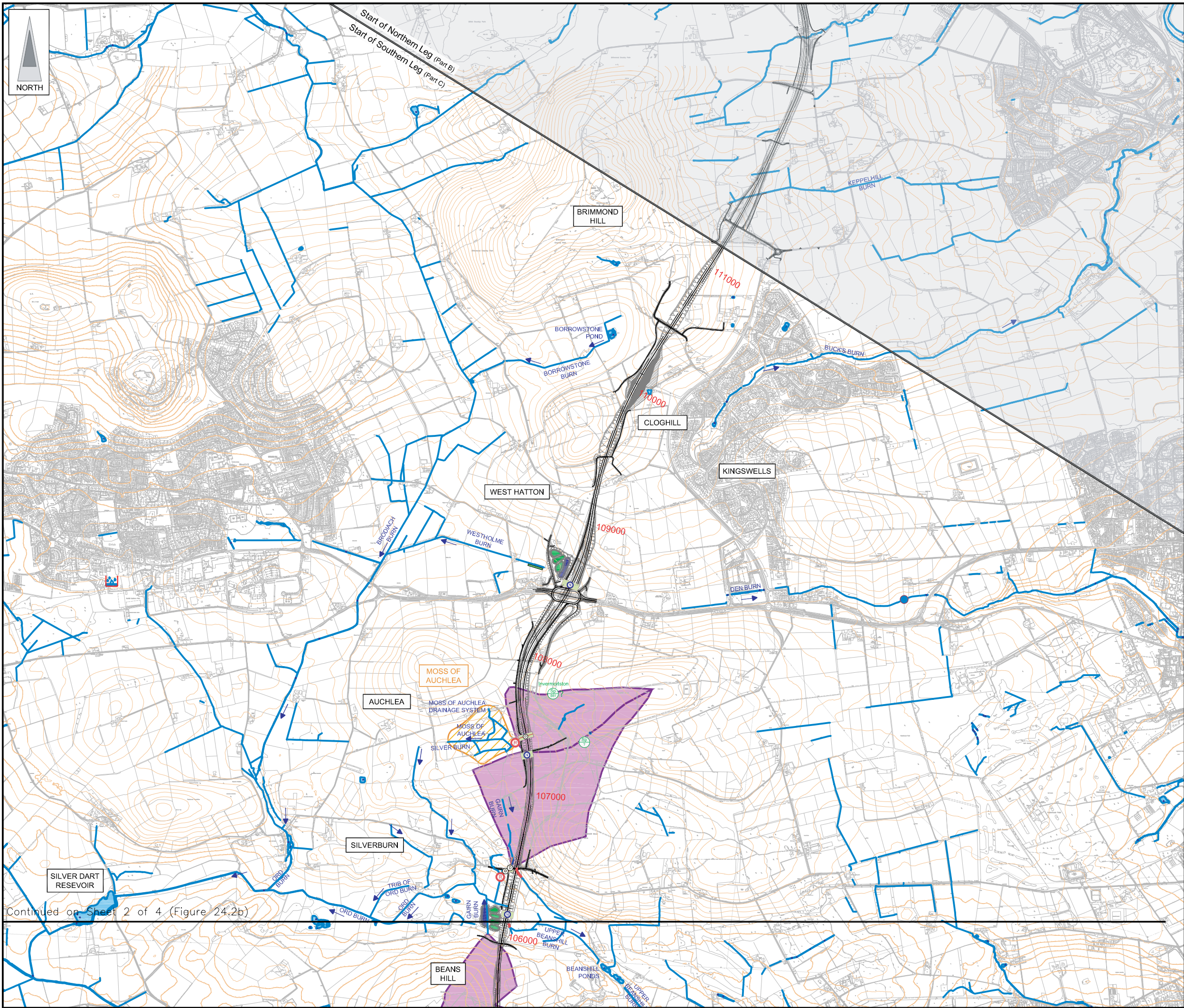
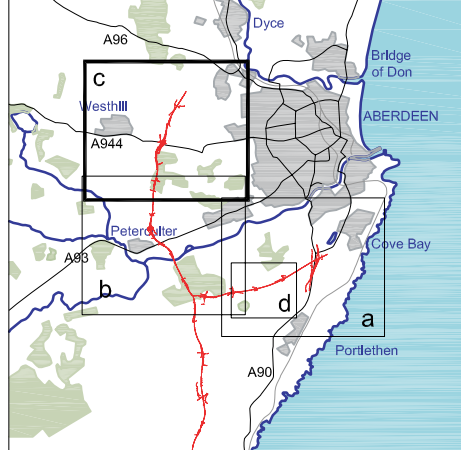
- Proposed Route (Engineering Profile 04/05/07)
- Watercourses
- Direction of Flow
- Waterbody
- Hydrological Feature Indicative Boundary
- Natural Catchment Boundary
- Dissected Catchment Boundary
- Dissected Catchment Boundary outfalling to New Catchment
- Spring Location
- Private Groundwater Well Supply
- Depressed Invert Culvert
- Extension to Existing Culvert
- Network Culvert
- Stream Re-Alignment
- Watercourse taken into pre-earthworks
- Watercourse lost to stream re-alignment
- Watercourse lost through Catchment Severance/filled in
- Bridge
- SEPA Flow Gauges
- SEPA Spot Gauging Location
- JACOBS Spot Gauging Location
- SEPA Rain Gauge (Daily Recording and Tipping Bucket)
- Drainage Treatment**
- Detention Basin
- Treatment Pond
- Swale

JE JACOBS
 95 Bothwell Street, Glasgow, G2 7HX, UK
 Tel: 0141 204 2511 Fax: 0141 226 3109
 www.jacobstablie.com

Client	Aberdeen Western Peripheral Route	
Project	Aberdeen Western Peripheral Route Environmental Statement, Part C - Southern Leg	
Title	Surface Water Hydrology Sheet 2 of 4	
Drawing Status	FINAL	Revisions
JB No.	0010332	Date July 2007
Figure No.	FIGURE 24.2b	Approved SH
Scale	1:25,000	Checked LB
Drawn MY	Signature	Signature

This map is based on Ordnance Survey material with the permission of Ordnance Survey on behalf of the controller of Her Majesty's Stationery Office. Crown copyright. Unauthorised reproduction infringes Crown copyright and may lead to prosecution or civil proceedings. Scottish Executive Licence Number, 100020540 (2007). Maps produced by Jacobs UK Ltd. This map should NOT be rescaled. Copyright reserved.

FIGURE 24.2c



- LEGEND**
- Proposed Route (Engineering Profile 04/05/07)
 - Watercourses
 - Direction of Flow
 - Waterbody
 - Hydrological Feature Indicative Boundary
 - Natural Catchment Boundary
 - Dissected Catchment Boundary
 - Dissected Catchment Boundary outfalling to New Catchment
 - Spring Location
 - Private Groundwater Well Supply
 - Depressed Invert Culvert
 - Extension to Existing Culvert
 - Network Culvert
 - Stream Re-Alignment
 - Watercourse taken into pre-earthworks
 - Watercourse lost to stream re-alignment
 - Watercourse lost through Catchment Severance/filled in
 - Bridge
 - SEPA Flow Gauges
 - SEPA Spot Gauging Location
 - JACOBS Spot Gauging Location
 - SEPA Rain Gauge (Daily Recording and Tipping Bucket)
 - Drainage Treatment**
 - Detention Basin
 - Treatment Pond
 - Swale

JE JACOBS
 95 Bothwell Street, Glasgow, G2 7HX, UK
 Tel: 0141 204 2511 Fax: 0141 226 3109
 www.jacobstablie.com

Client: Aberdeen Western Peripheral Route

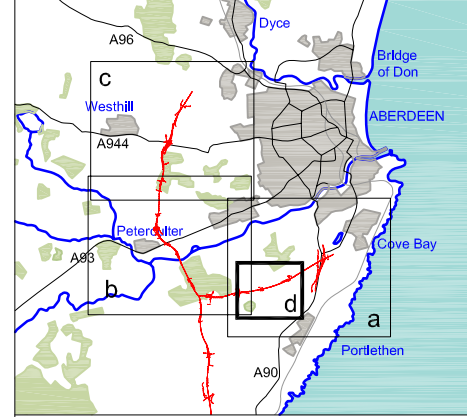
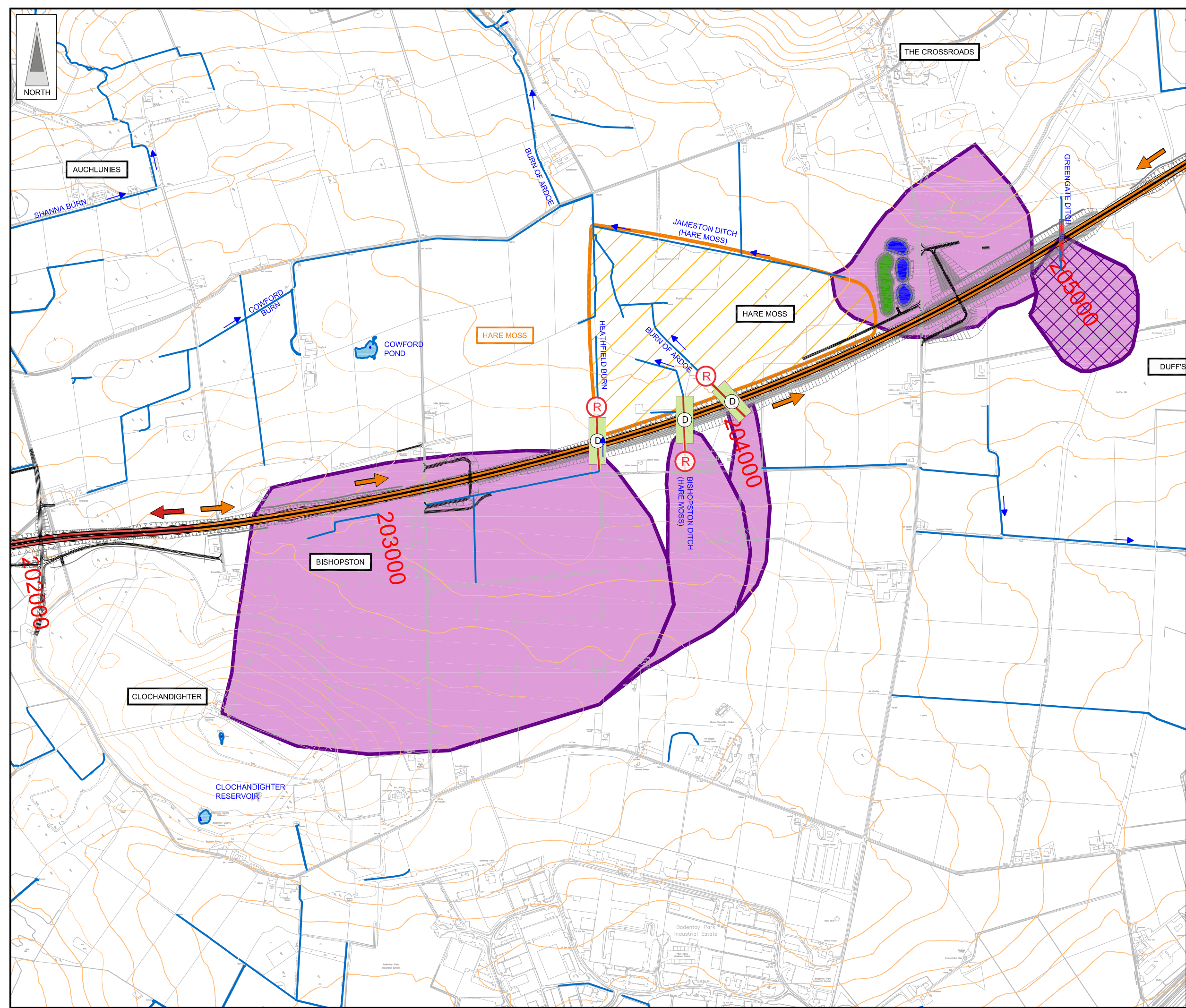
Project: Aberdeen Western Peripheral Route
 Environmental Statement, Part C - Southern Leg

Title: Surface Water Hydrology
 Sheet 3 of 4

Drawing Status	FINAL	Revisions	
JB No.	0010332	Date	July 2007
Figure No.	FIGURE 24.2c	Checked	Approved
Scale	1:25,000	MY	SH

Continued on Sheet 2 of 4 (Figure 24.2b)

FIGURE 24.2d



- LEGEND**
- Proposed Route (Engineering Profile 04/05/07)
 - Watercourses
 - Direction of Flow
 - Waterbody
 - Hydrological Feature Indicative Boundary
 - Natural Catchment Boundary
 - Dissected Catchment Boundary
 - Dissected Catchment Boundary outfalling to New Catchment
 - Spring Location
 - Private Groundwater Well Supply
 - Depressed Invert Culvert
 - Extension to Existing Culvert
 - Network Culvert
 - Stream Re-Alignment
 - Watercourse taken into pre-earthworks
 - Watercourse lost to stream re-alignment
 - Watercourse lost through Catchment Severance/filled in
 - Bridge
 - SEPA Flow Gauges
 - SEPA Spot Gauging Location
 - JACOBS Spot Gauging Location
 - SEPA Rain Gauge (Daily Recording and Tipping Bucket)
 - Drainage Treatment**
 - Detention Basin
 - Treatment Pond
 - Swale
 - Drainage Runs**
 - Run E - Burnhead Burn
 - Run F - Jameston Ditch

JE JACOBS
 95 Bothwell Street, Glasgow, G2 7HX, UK
 Tel: 0141 204 2511 Fax: 0141 226 3109
 www.jacobstabble.com

Client	Aberdeen Western Peripheral Route		
Project	Aberdeen Western Peripheral Route Environmental Statement, Part C - Southern Leg		
Title	Surface Water Hydrology Hare Moss Sheet 4 of 4		
Drawing Status	FINAL	Revisions	
JB No.	0010332	Date	July 2007
Figure No.	FIGURE 24.2d	Drawn	MY
Scale	1:10,000	Checked	LB
		Approved	SH