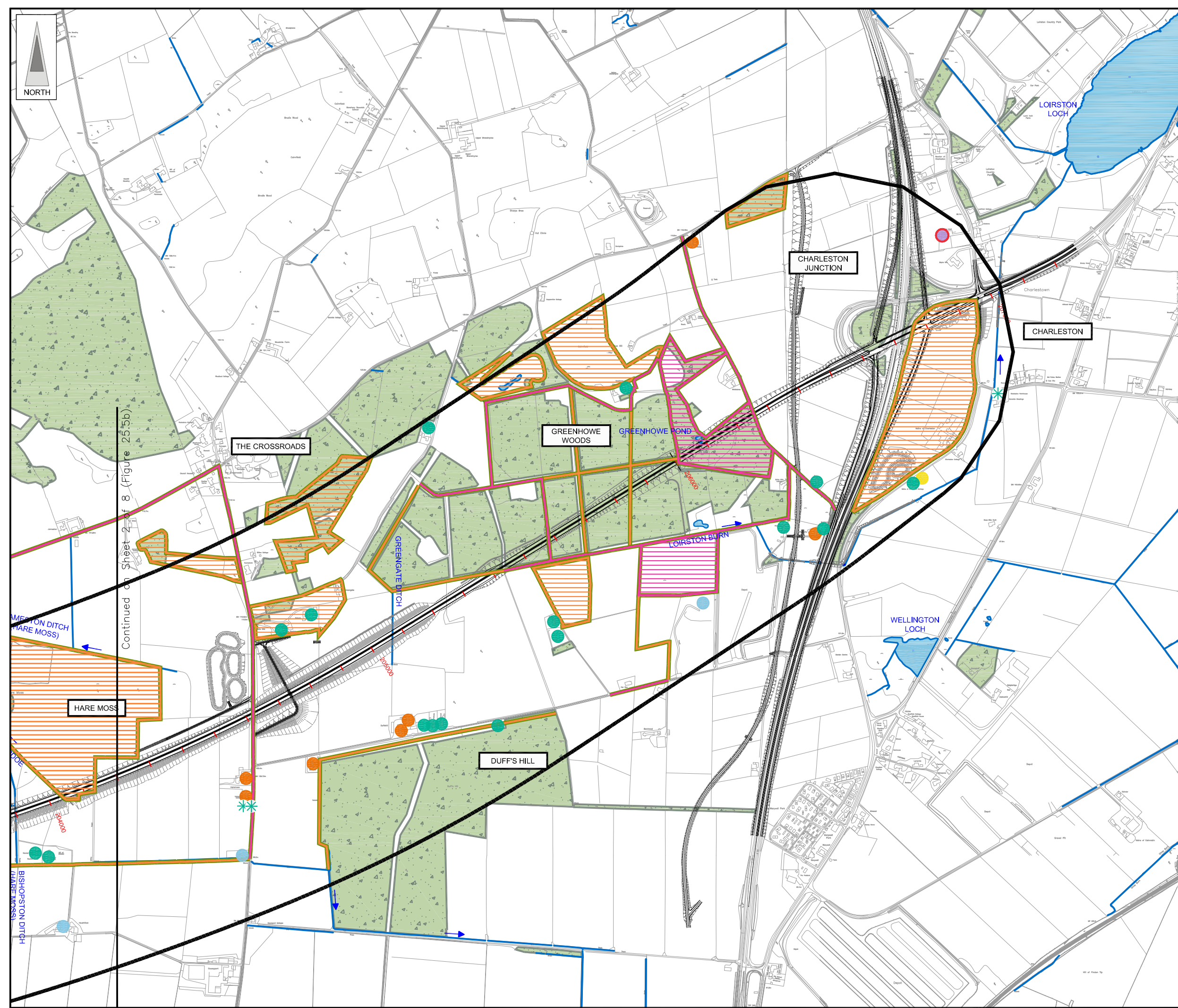
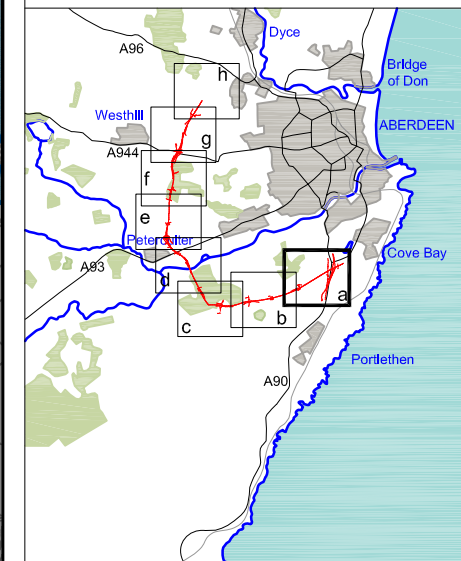


FIGURE 25.5a



LEGEND

- Proposed Route (Engineering Profile 04/05/07)
- Indicative Study Area (500m from centre of Proposed Route)
- Woodland
- Watercourses and Waterbody

Building Roosts

- Bat Roost (1A)
- Bat Roost (1B)
- Potential Bat Roost (2A)
- Potential Bat Roost (2B)
- No Potential as a Bat Roost (3)
- Roost Identified by Aberdeen Bat Group
- Emergency Survey Done (Roost Not Confirmed)
- Emergency Survey Done (Roost Confirmed)

Individual & Multiple Tree Roosts

- Bat Roost (1A)
- Bat Roost (1B)
- Potential Bat Roost (2A)
- Potential Bat Roost (2B)

Habitat Assessment

- High & Medium Potential (roosting, foraging, commuting - see report)

Bridges / Culverts Roost Potential

- High, Medium & Low

Bat Activity and Habitat Surveys are ongoing and due for completion in August 2007

Rev	Date	Purpose of Revision	Drwn	Chkd	Appd

JE JACOBS
 95 Bothwell Street, Glasgow, G2 7HX, UK
 Tel: 0141 204 2511 Fax: 0141 226 3109
 www.jacobstable.com

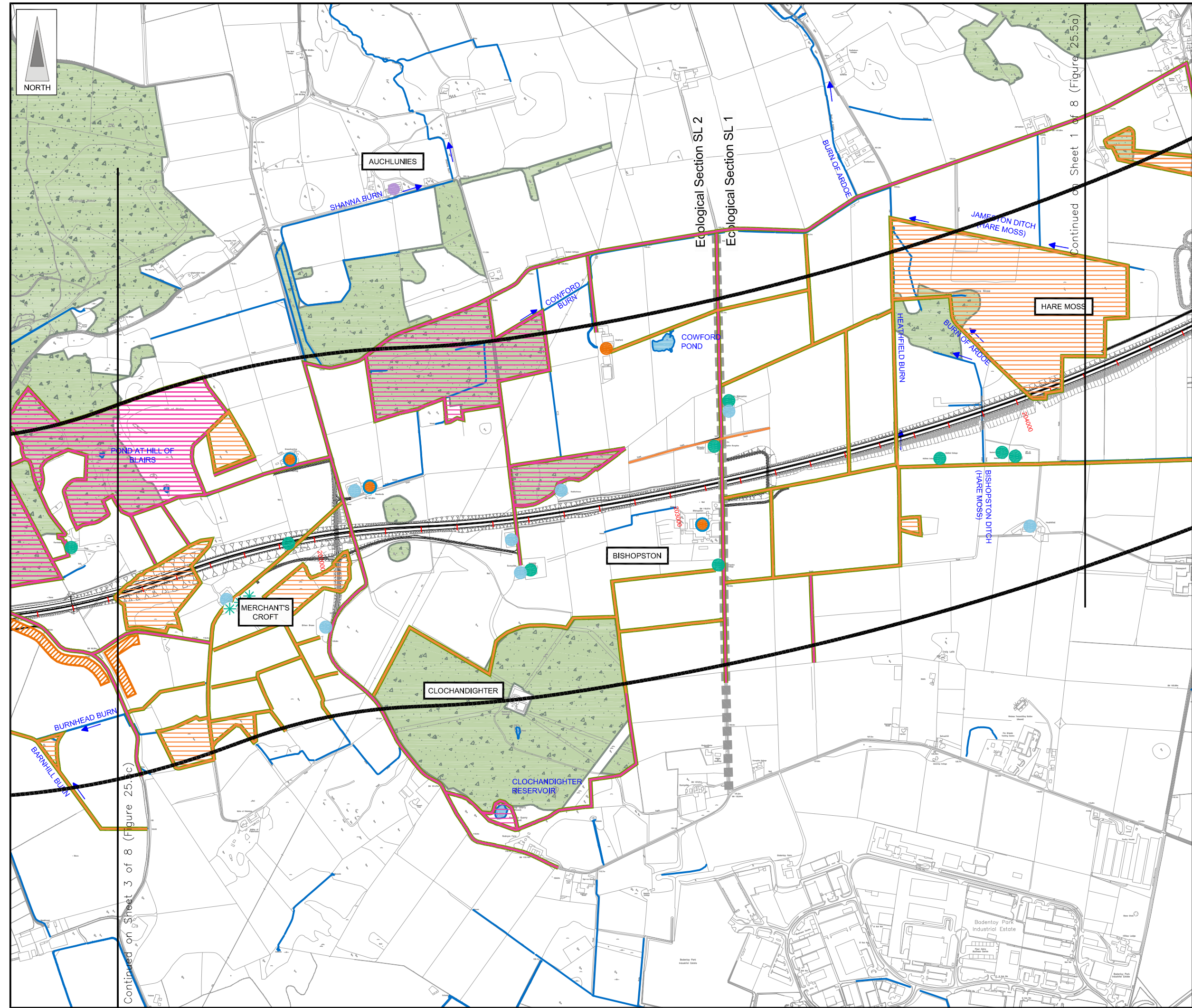
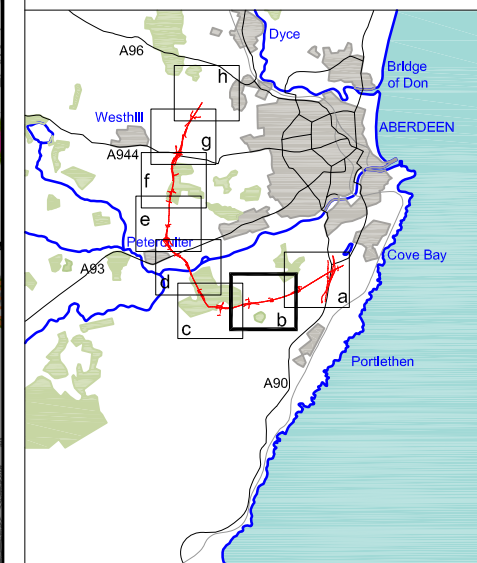
Client: Aberdeen Western Peripheral Route

Project: Aberdeen Western Peripheral Route
 Environmental Statement, Part C - Southern Leg

Title: Bat Habitat Surveys
 Sheet 1 of 8

Drawing Status	FINAL	Revisions	
JB No.	0010332	Date	July 2007
Figure No.	FIGURE 25.5a	Checked	NT
Scale	1:10,000	Approved	SH
Drawn	SHF		

FIGURE 25.5b



LEGEND

- Proposed Route (Engineering Profile 04/05/07)
- Indicative Study Area (500m from centre of Proposed Route)
- Woodland
- Watercourses and Waterbody

Building Roosts

- Bat Roost (1A)
- Bat Roost (1B)
- Potential Bat Roost (2A)
- Potential Bat Roost (2B)
- No Potential as a Bat Roost (3)
- Roost Identified by Aberdeen Bat Group
- Emergency Survey Done (Roost Not Confirmed)
- Emergency Survey Done (Roost Confirmed)

Individual & Multiple Tree Roosts

- Bat Roost (1A)
- Bat Roost (1B)
- Potential Bat Roost (2A)
- Potential Bat Roost (2B)

Habitat Assessment

- High & Medium Potential (roosting, foraging, commuting - see report)

Bridges / Culverts Roost Potential

- High, Medium & Low

Bat Activity and Habitat Surveys are ongoing and due for completion in August 2007

Rev	Date	Purpose of Revision	Drwn	Chkd	Appd

JE JACOBS
 95 Bothwell Street, Glasgow, G2 7HX, UK
 Tel: 0141 204 2511 Fax: 0141 226 3109
 www.jacobstabble.com

Client: **Aberdeen Western Peripheral Route**

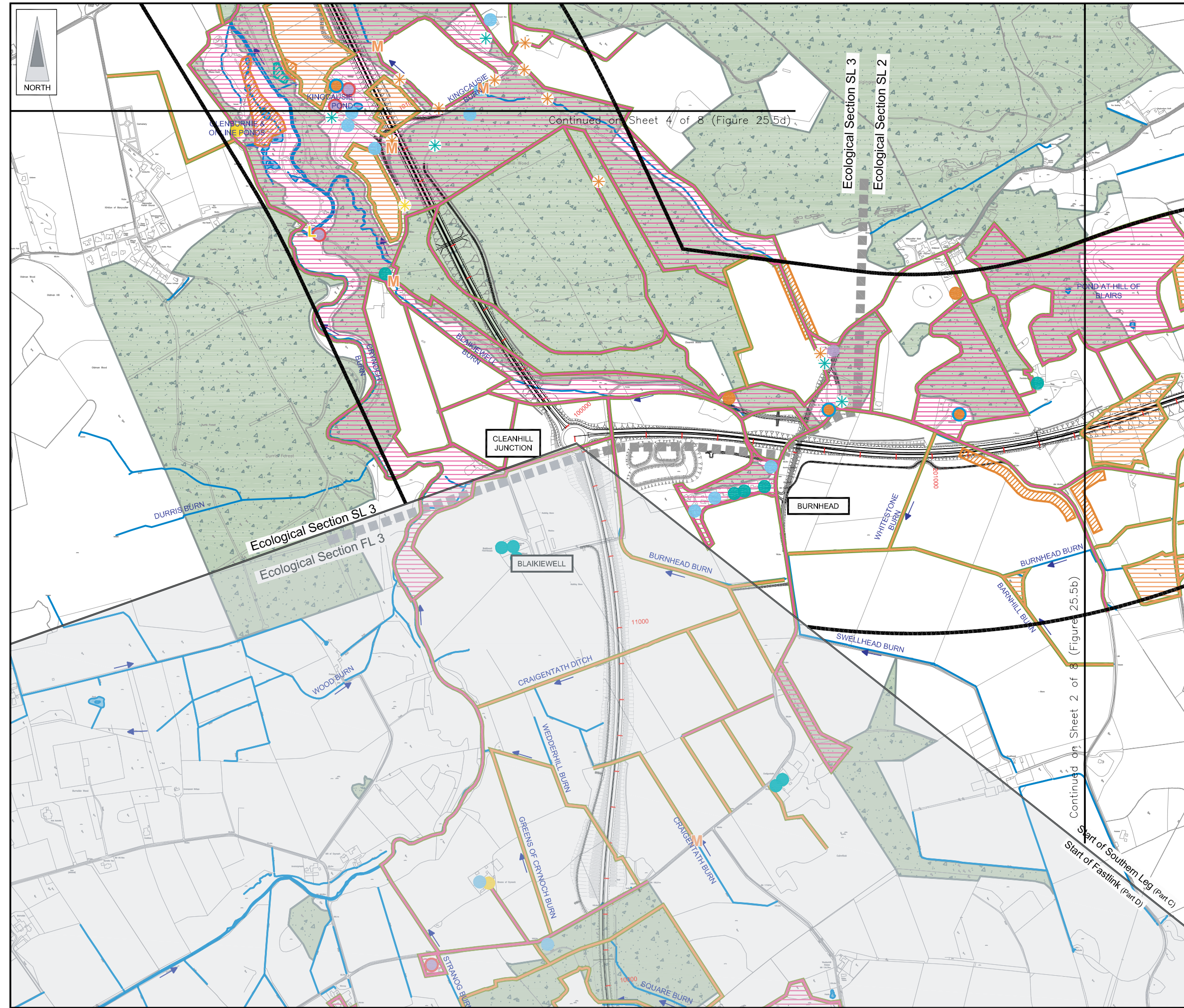
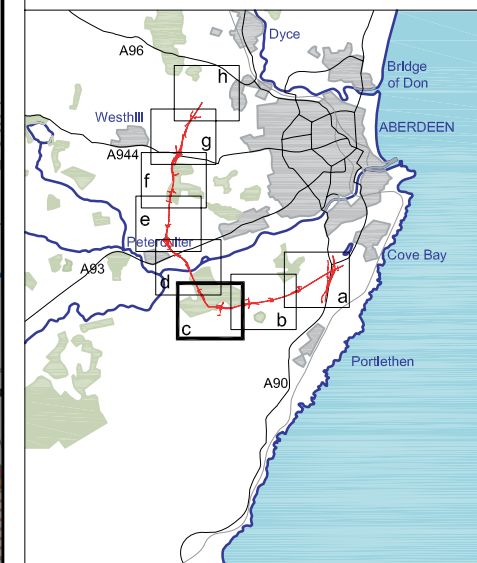
Project: **Aberdeen Western Peripheral Route Environmental Statement, Part C - Southern Leg**

Title: **Bat Habitat Surveys Sheet 2 of 8**

Drawing Status	FINAL	Revisions	
JB No.	0010332	Date	July 2007
Figure No.	FIGURE 25.5b	Approved	SH
Scale	1:10,000	Checked	NT
Drawn	SHF		

This drawing is not to be used in whole or part other than for the intended purpose and project as defined on this drawing. Refer to the contract for full terms and conditions. Maps produced by Jacobs UK Ltd. This map should NOT be rescaled. Copyright reserved.

FIGURE 25.5c



LEGEND

- Proposed Route (Engineering Profile 04/05/07)
- Indicative Study Area (500m from centre of Proposed Route)
- Woodland
- Watercourses and Waterbody

Bat Roosts

- Bat Roost (1A)
- Bat Roost (1B)
- Potential Bat Roost (2A)
- Potential Bat Roost (2B)
- No Potential as a Bat Roost (3)
- Roost Identified by Aberdeen Bat Group
- Emergency Survey Done (Roost Not Confirmed)
- Emergency Survey Done (Roost Confirmed)

Individual & Multiple Tree Roosts

- Bat Roost (1A)
- Bat Roost (1B)
- Potential Bat Roost (2A)
- Potential Bat Roost (2B)

Habitat Assessment

- High & Medium Potential (roosting, foraging, commuting - see report)

Bridges / Culverts Roost Potential

- High, Medium & Low

Bat Activity and Habitat Surveys are ongoing and due for completion in August 2007

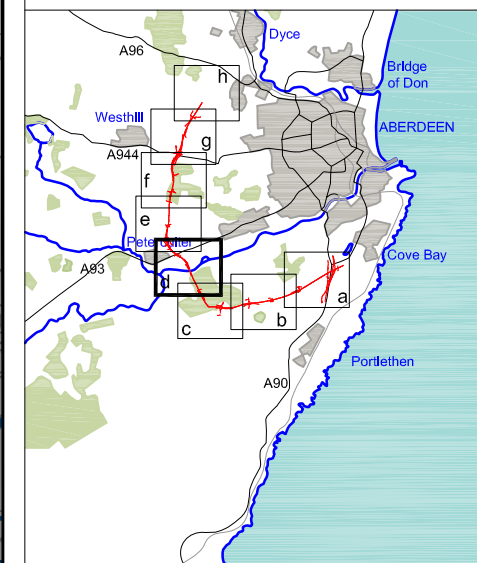
Rev	Date	Purpose of Revision	Drwn	Chkd	Appd

JE JACOBS
 95 Bothwell Street, Glasgow, G2 7HX, UK
 Tel: 0141 204 2511 Fax: 0141 226 3109
 www.jacobstabtie.com

Client					
Project	Aberdeen Western Peripheral Route Environmental Statement, Part C - Southern Leg				
Title	Bat Habitat Surveys Sheet 3 of 8				
Drawing Status	FINAL	Revisions			
JB No.	0010332	Date July 2007			
Figure No.	FIGURE 25.5c	Approved SH			
Scale	1:10,000	Checked NT	Approved SH		
Drawn SHF					

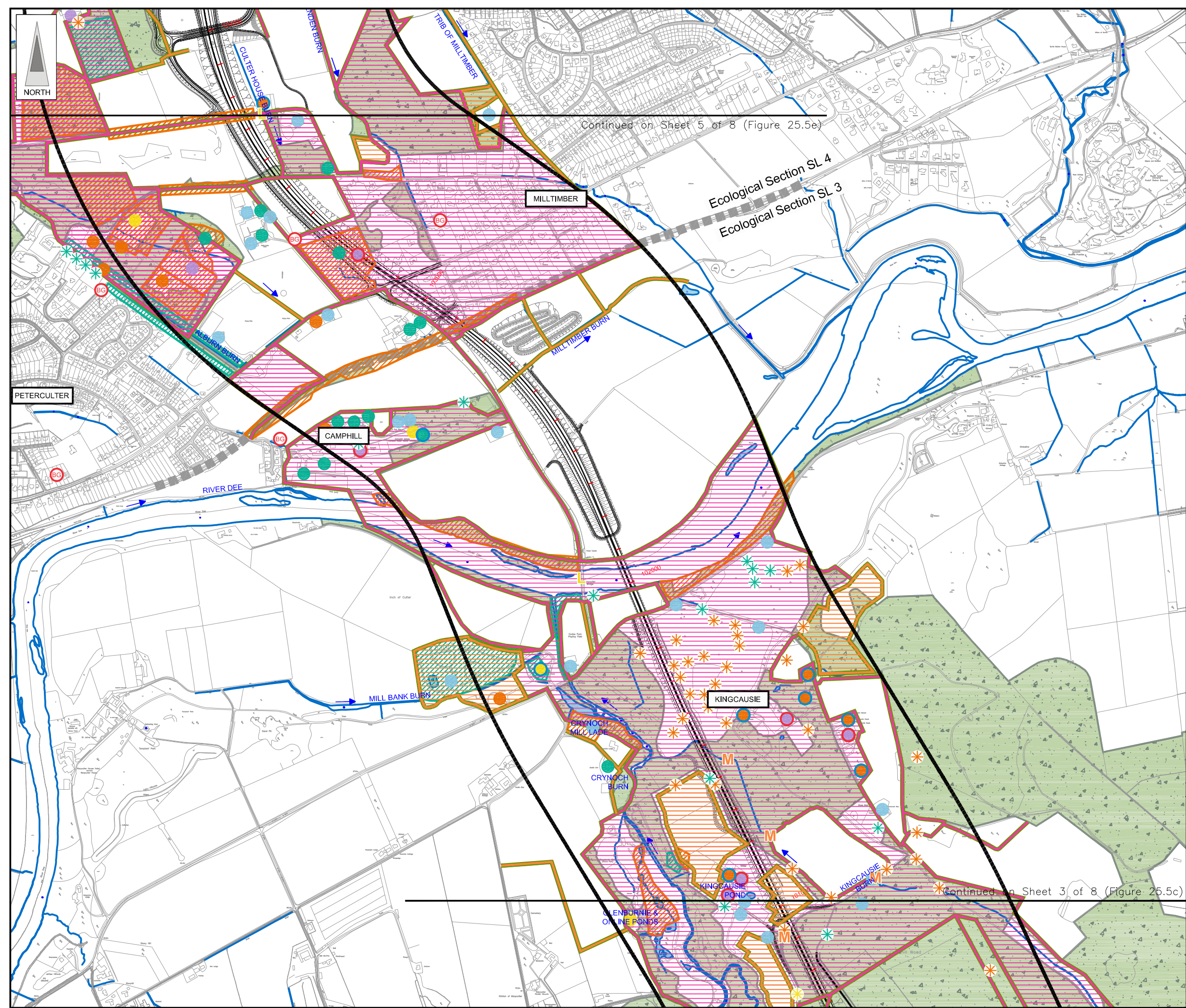
This map is based on Ordnance Survey material with the permission of Ordnance Survey on behalf of the controller of Her Majesty's Stationery Office. Crown copyright. Unauthorised reproduction infringes Crown copyright and may lead to prosecution or civil proceedings. Scottish Executive Licence Number, 100020540 (2007). This drawing is not to be used in whole or part other than for the intended purpose and project as defined on this drawing. Refer to the contract for full terms and conditions. Maps produced by Jacobs UK Ltd. This map should NOT be rescaled. Copyright reserved.

FIGURE 25.5d



Continued on Sheet 5 of 8 (Figure 25.5e)

Continued on Sheet 3 of 8 (Figure 25.5c)



- LEGEND**
- Proposed Route
(Engineering Profile 04/05/07)
 - Indicative Study Area
(500m from centre of Proposed Route)
 - Woodland
 - Watercourses and Waterbody
- Building Roosts**
- Bat Roost (1A)
 - Bat Roost (1B)
 - Potential Bat Roost (2A)
 - Potential Bat Roost (2B)
 - No Potential as a Bat Roost (3)
 - Roost Identified by Aberdeen Bat Group
 - Emergency Survey Done (Roost Not Confirmed)
 - Emergency Survey Done (Roost Confirmed)
- Individual & Multiple Tree Roosts**
- Bat Roost (1A)
 - Bat Roost (1B)
 - Potential Bat Roost (2A)
 - Potential Bat Roost (2B)
- Habitat Assessment**
- High & Medium Potential (roosting, foraging, commuting - see report)
- Bridges / Culverts Roost Potential**
- High, Medium & Low

Bat Activity and Habitat Surveys are ongoing and due for completion in August 2007

Rev	Date	Purpose of Revision	Drwn	Chkd	Appd

JE JACOBS
 95 Bothwell Street, Glasgow, G2 7HX, UK
 Tel: 0141 204 2511 Fax: 0141 226 3109
 www.jacobsbattle.com

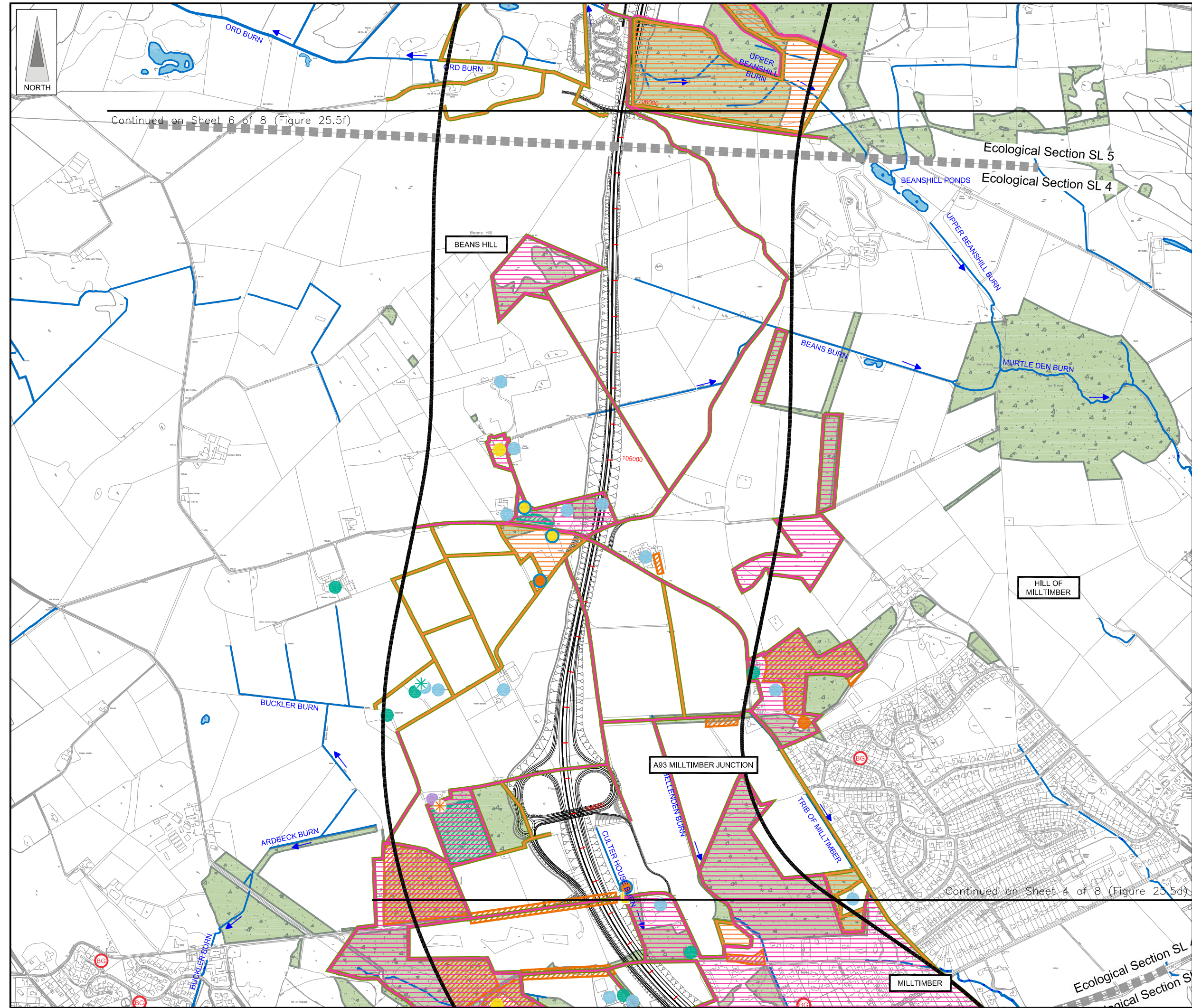
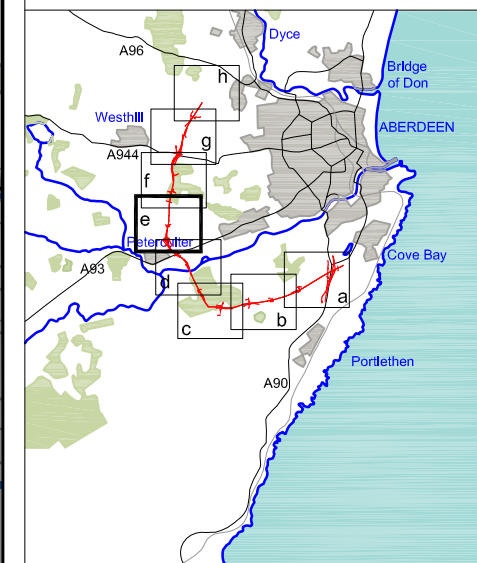
Client: **Aberdeen Western Peripheral Route**

Project: **Aberdeen Western Peripheral Route Environmental Statement, Part C - Southern Leg**

Title: **Bat Habitat Surveys Sheet 4 of 8**

Drawing Status	FINAL	Revisions	
JB No.	0010332	Date	July 2007
Figure No.	FIGURE 25.5d	Approved	SH
Scale	1:10,000	Checked	NT
Drawn	SHF	Approved	SH

FIGURE 25.5e



Continued on Sheet 6 of 8 (Figure 25.5f)

Continued on Sheet 4 of 8 (Figure 25.5d)

LEGEND

- Proposed Route (Engineering Profile 04/05/07)
- Indicative Study Area (500m from centre of Proposed Route)
- Woodland
- Watercourses and Waterbody

Building Roosts

- Bat Roost (1A)
- Bat Roost (1B)
- Potential Bat Roost (2A)
- Potential Bat Roost (2B)
- No Potential as a Bat Roost (3)
- Roost Identified by Aberdeen Bat Group
- Emergency Survey Done (Roost Not Confirmed)
- Emergency Survey Done (Roost Confirmed)

Individual & Multiple Tree Roosts

- Bat Roost (1A)
- Bat Roost (1B)
- Potential Bat Roost (2A)
- Potential Bat Roost (2B)

Habitat Assessment

- High & Medium Potential (roosting, foraging, commuting - see report)

Bridges / Culverts Roost Potential

- H M L High, Medium & Low

Bat Activity and Habitat Surveys are ongoing and due for completion in August 2007

Rev	Date	Purpose of Revision	Drwn	Chkd	Appd

JE JACOBS
 95 Bothwell Street, Glasgow, G2 7HX, UK
 Tel: 0141 204 2511 Fax: 0141 226 3109
 www.jacobstabtie.com

Client: Aberdeen Western Peripheral Route

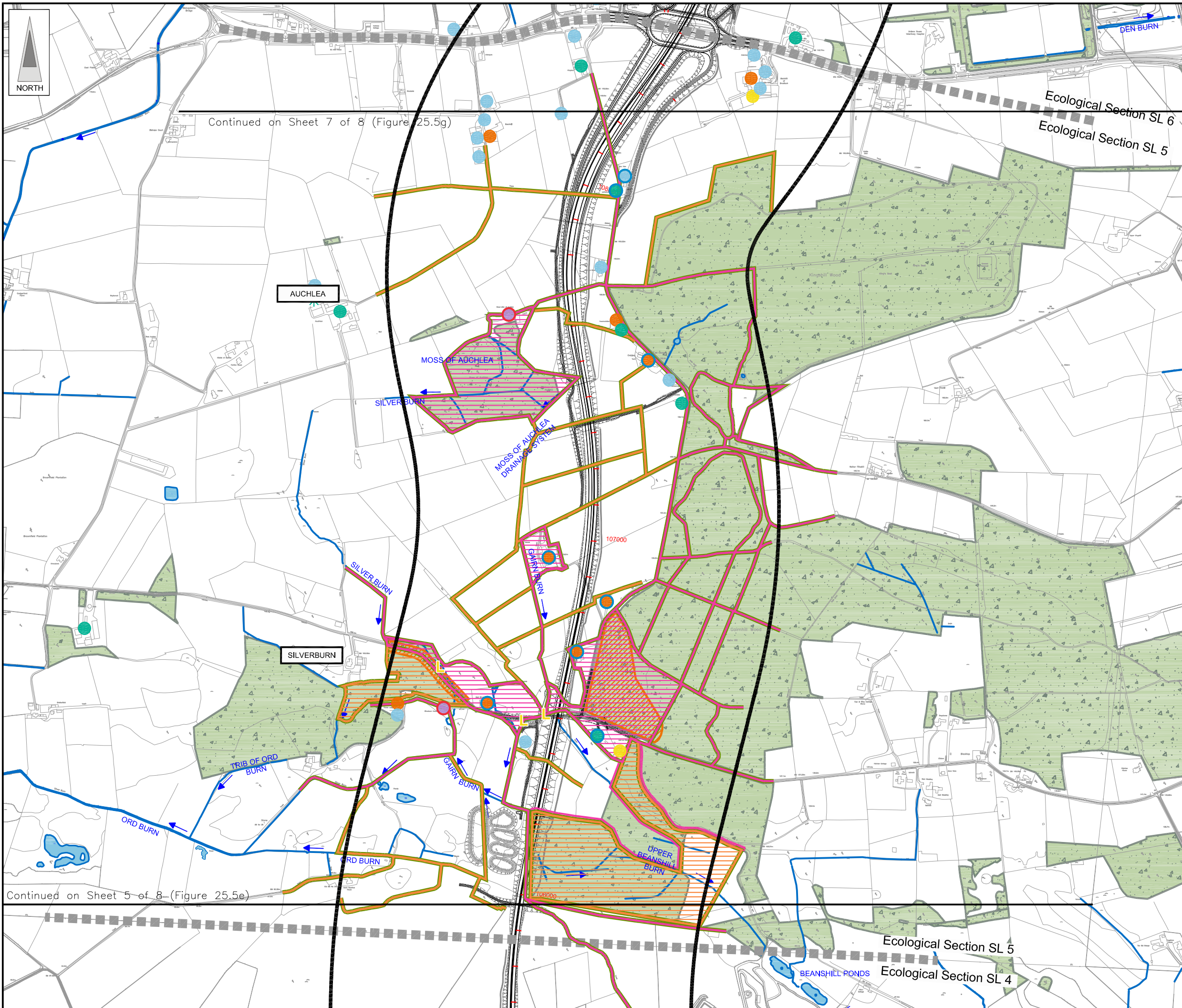
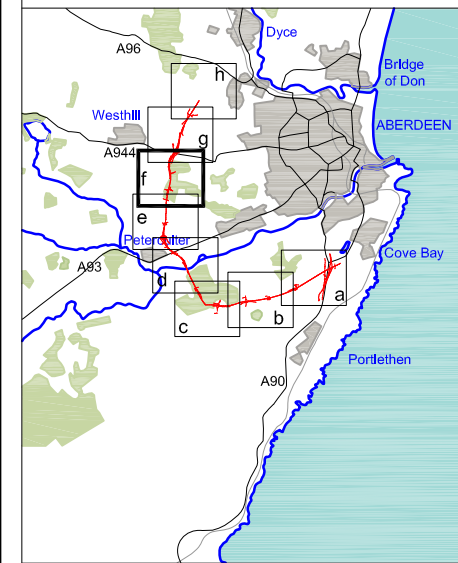
Project: Aberdeen Western Peripheral Route Environmental Statement, Part C - Southern Leg

Title: Bat Habitat Surveys Sheet 5 of 8

Drawing Status: FINAL	Revisions:
JB No. 0010332	Date: July 2007
Figure No. FIGURE 25.5e	Approved: SH
Scale: 1:10,000	Checked: NT
Drawn: SHF	Approved: SH

This map is based on Ordnance Survey material with the permission of Ordnance Survey on behalf of the controller of Her Majesty's Stationery Office. Unauthorised reproduction infringes Crown copyright and may lead to prosecution or civil proceedings. Scottish Executive Licence Number, 100020540 (2007).

FIGURE 25.5f



LEGEND

- Proposed Route**
(Engineering Profile 04/05/07)
- Indicative Study Area**
(500m from centre of Proposed Route)
- Woodland**
- Watercourses and Waterbody**
- Building Roosts**
- Bat Roost (1A)**
- Bat Roost (1B)**
- Potential Bat Roost (2A)**
- Potential Bat Roost (2B)**
- No Potential as a Bat Roost (3)**
- Roost Identified by Aberdeen Bat Group**
- Emergency Survey Done (Roost Not Confirmed)**
- Emergency Survey Done (Roost Confirmed)**
- Individual & Multiple Tree Roosts**
- Bat Roost (1A)**
- Bat Roost (1B)**
- Potential Bat Roost (2A)**
- Potential Bat Roost (2B)**
- Habitat Assessment**
- High & Medium Potential**
(roosting, foraging, commuting - see report)
- High, Medium & Low**
- Bridges / Culverts Roost Potential**
- HML** High, Medium & Low

Bat Activity and Habitat Surveys are ongoing and due for completion in August 2007

Rev	Date	Purpose of Revision	Drwn	Chkd	Appd

JE JACOBS
 95 Bothwell Street, Glasgow, G2 7HX, UK
 Tel: 0141 204 2511 Fax: 0141 226 3109
 www.jacobsbattle.com

Client: **Aberdeen Western Peripheral Route**

Project: **Aberdeen Western Peripheral Route Environmental Statement, Part C - Southern Leg**

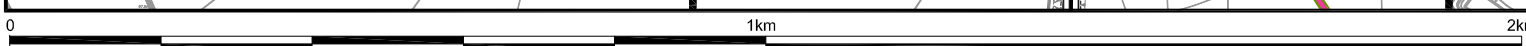
Title: **Bat Habitat Surveys Sheet 6 of 8**

Drawing Status	FINAL	Revisions	
JB No.	0010332	Date	July 2007
Figure No.	FIGURE 25.5f	Approved	SH
Scale	1:10,000	Checked	NT
Drawn	SHF	Approved	SH

This drawing is not to be used in whole or part other than for the intended purpose and project as defined on this drawing. Refer to the contract for full terms and conditions. Maps produced by Jacobs UK Ltd. This map should NOT be rescaled. Copyright reserved.

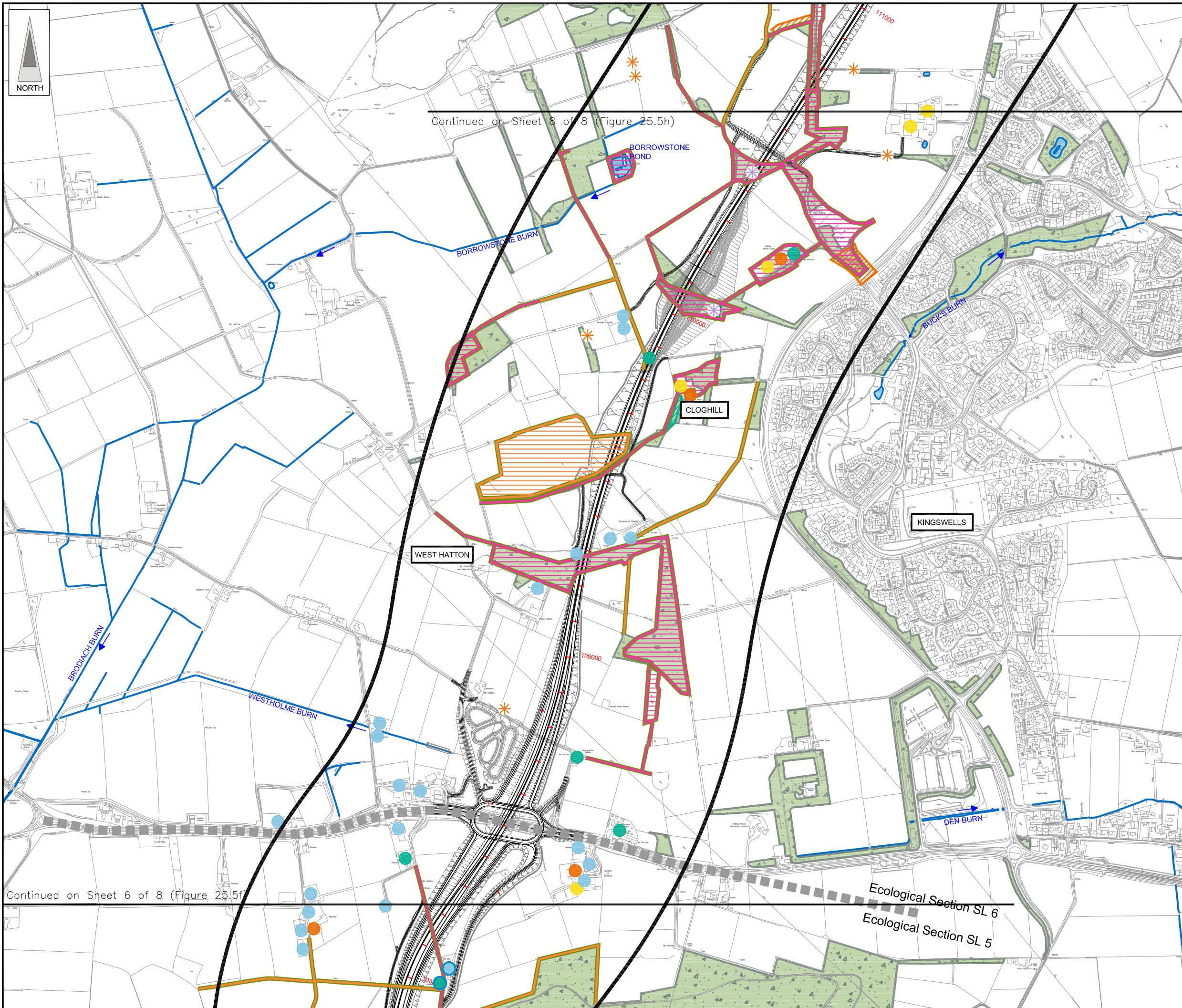
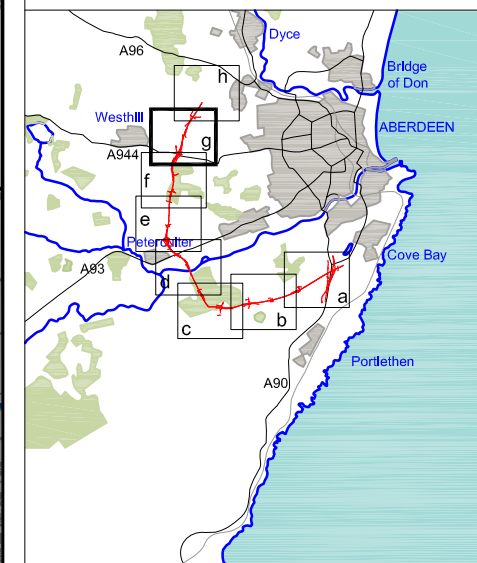
Continued on Sheet 7 of 8 (Figure 25.5g)

Continued on Sheet 5 of 8 (Figure 25.5e)



This map is based on Ordnance Survey material with the permission of Ordnance Survey on behalf of the controller of Her Majesty's Stationary Office. Crown copyright. Unauthorised reproduction infringes Crown copyright and may lead to prosecution or civil proceedings. Scottish Executive Licence Number, 100020540 (2007).

FIGURE 25.5g



LEGEND

- Proposed Route (Engineering Profile 04/05/07)
- Indicative Study Area (500m from centre of Proposed Route)
- Woodland
- Watercourses and Waterbody

Building Roosts

- Bat Roost (1A)
- Bat Roost (1B)
- Potential Bat Roost (2A)
- Potential Bat Roost (2B)
- No Potential as a Bat Roost (3)
- Roost Identified by Aberdeen Bat Group
- Emergency Survey Done (Roost Not Confirmed)
- Emergency Survey Done (Roost Confirmed)

Individual & Multiple Tree Roosts

- Bat Roost (1A)
- Bat Roost (1B)
- Potential Bat Roost (2A)
- Potential Bat Roost (2B)

Habitat Assessment

- High & Medium Potential (roosting, foraging, commuting - see report)

Bridges / Culverts Roost Potential

- High, Medium & Low

Bat Activity and Habitat Surveys are ongoing and due for completion in August 2007

Rev	Date	Purpose of Revision	Drwn	Chkd	Appd

JE JACOBS
 95 Bothwell Street, Glasgow, G2 7HX, UK
 Tel: 0141 204 2511 Fax: 0141 226 3109
 www.jacobstabtie.com

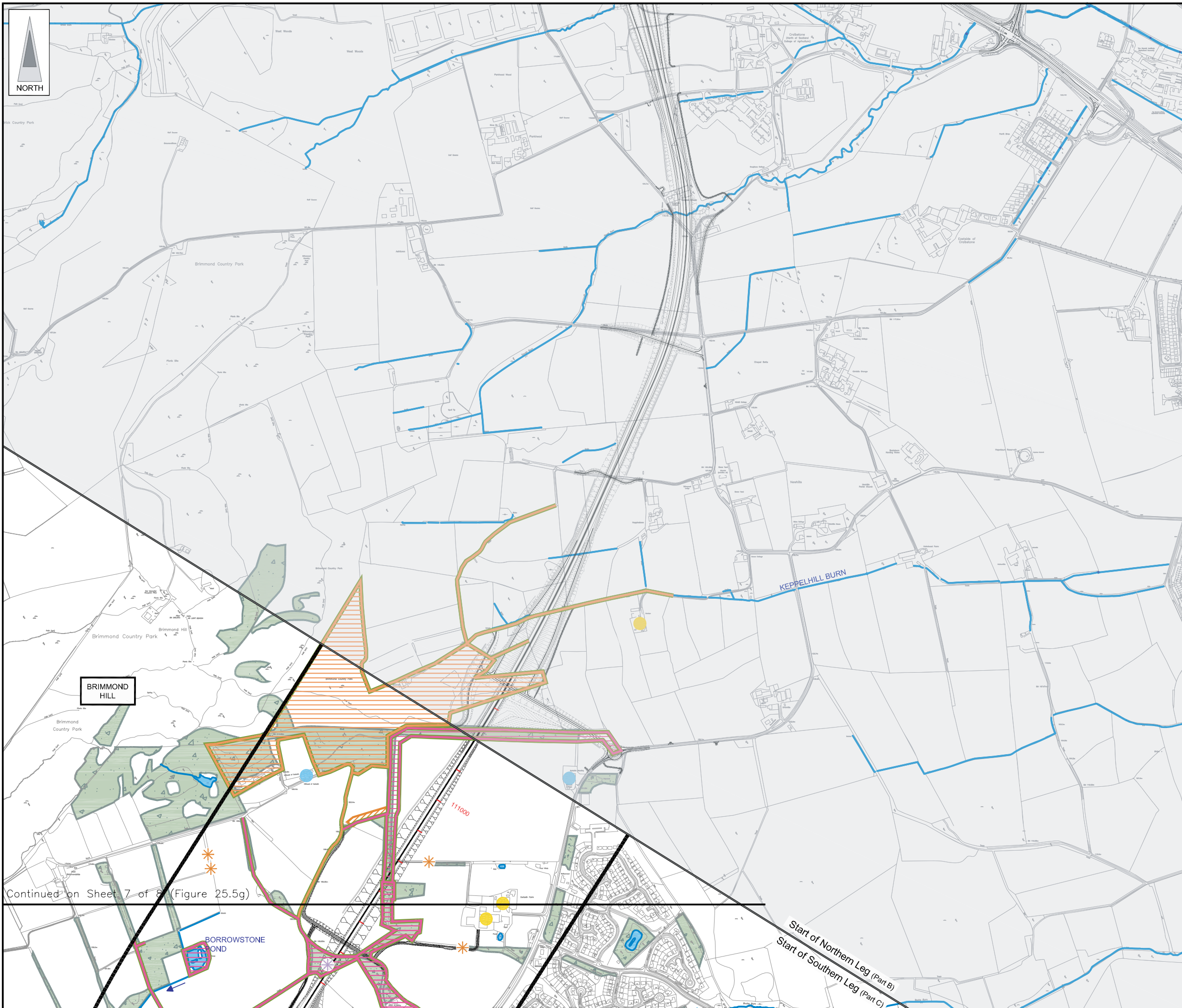
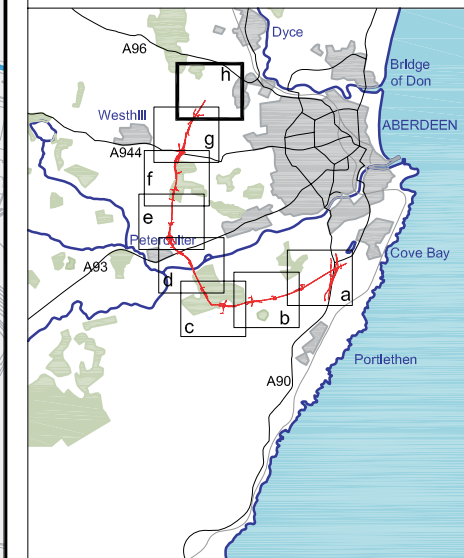
Client: Aberdeen Western Peripheral Route

Project: Aberdeen Western Peripheral Route
 Environmental Statement, Part C - Southern Leg

Title: Bat Habitat Surveys
 Sheet 7 of 8

Drawing Status	FINAL	Revisions	
JB No.	0010332	Date	July 2007
Figure No.	FIGURE 25.5g	Checked	NT
Scale	1:10,000	Approved	SH
Drawn	SHF		

FIGURE 25.5h



- LEGEND**
- Proposed Route (Engineering Profile 04/05/07)
 - Indicative Study Area (500m from centre of Proposed Route)
 - Woodland
 - Watercourses and Waterbody
- Building Roosts**
- Bat Roost (1A)
 - Bat Roost (1B)
 - Potential Bat Roost (2A)
 - Potential Bat Roost (2B)
 - No Potential as a Bat Roost (3)
 - Roost Identified by Aberdeen Bat Group
 - Emergency Survey Done (Roost Not Confirmed)
 - Emergency Survey Done (Roost Confirmed)
- Individual & Multiple Tree Roosts**
- Bat Roost (1A)
 - Bat Roost (1B)
 - Potential Bat Roost (2A)
 - Potential Bat Roost (2B)
- Habitat Assessment**
- High & Medium Potential (roosting, foraging, commuting - see report)
- Bridges / Culverts Roost Potential**
- High, Medium & Low

Bat Activity and Habitat Surveys are ongoing and due for completion in August 2007

Rev	Date	Purpose of Revision	Drwn	Chkd	Appd

JE JACOBS
 95 Bothwell Street, Glasgow, G2 7HX, UK
 Tel: 0141 204 2511 Fax: 0141 226 3109
 www.jacobstabale.com

Client: **Aberdeen Western Peripheral Route**

Project: **Aberdeen Western Peripheral Route Environmental Statement, Part C - Southern Leg**

Title: **Bat Habitat Surveys Sheet 8 of 8**

Drawing Status	FINAL	Revisions	
JB No.	0010332	Date	July 2007
Figure No.	FIGURE 25.5h	Approved	SH
Scale	1:10,000	Checked	NT
Drawn	SHF		

This drawing is not to be used in whole or part other than for the intended purpose and project as defined on this drawing. Refer to the contract for full terms and conditions. Maps produced by Jacobs UK Ltd. This map should NOT be rescaled. Copyright reserved.

Continued on Sheet 7 of 8 (Figure 25.5g)

0 1km 2km

This map is based on Ordnance Survey material with the permission of Ordnance Survey on behalf of the controller of Her Majesty's Stationery Office. Unauthorised reproduction infringes Crown copyright and may lead to prosecution or civil proceedings. Scottish Executive Licence Number, 100020540 (2007).