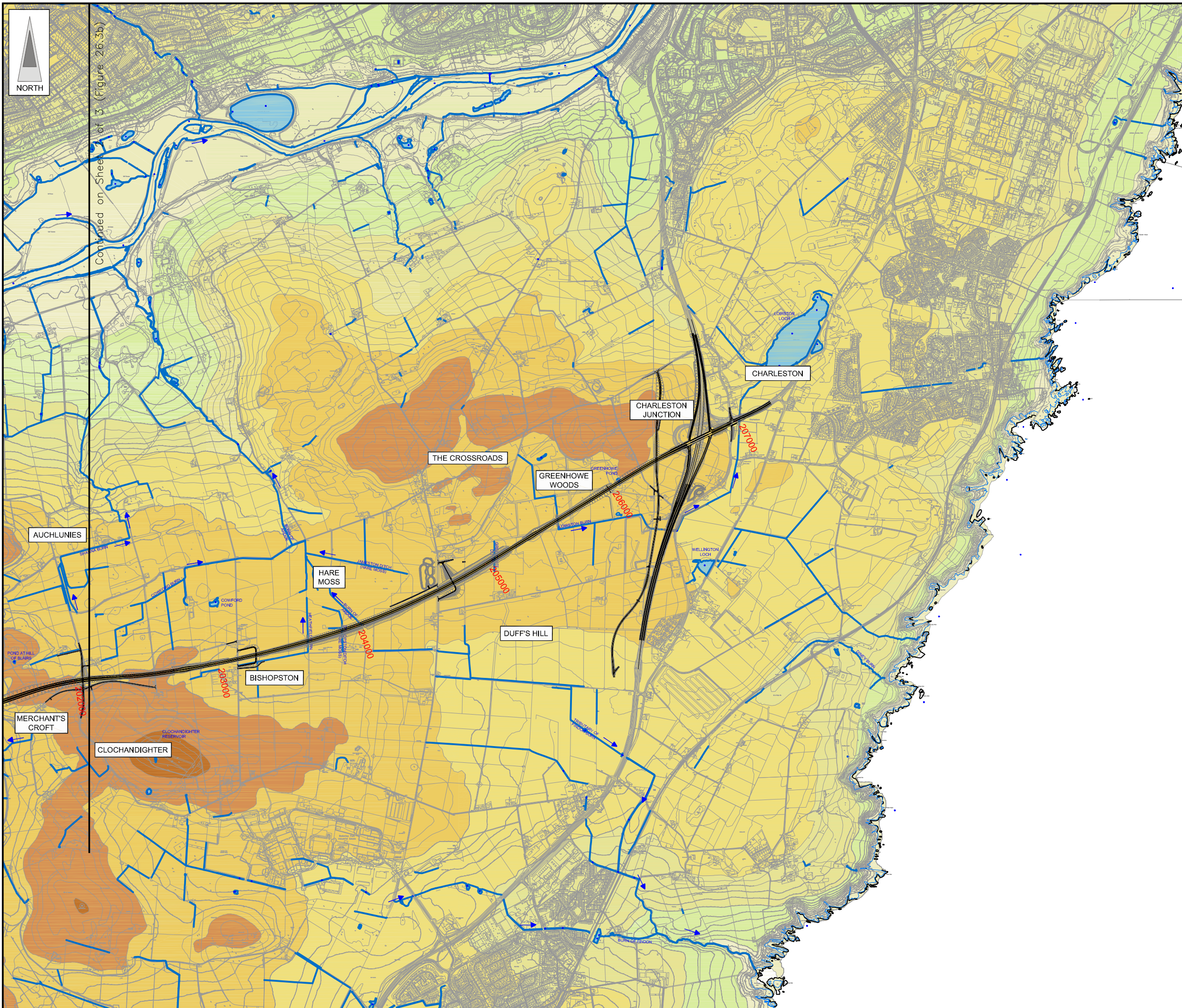
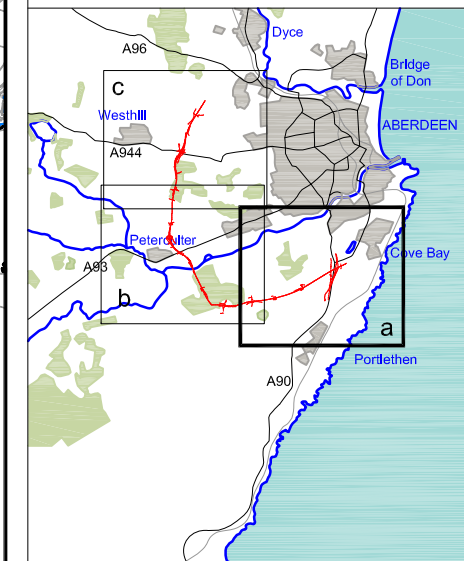


FIGURE 26.3a



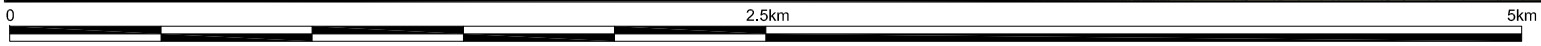
**LEGEND**

- Proposed Route (Engineering Profile 04/05/07)
- Watercourses
- Direction of Flow
- Waterbody

**Elevation Legend**

- 250 - 275m
- 225 - 250m
- 200 - 225m
- 175 - 200m
- 150 - 175m
- 125-150m
- 100-125m
- 75-100m
- 50-75m
- 25-50m
- 0-25m
- Below 0m

Continued on Sheet of 3 (Figure 26.3b)



This map is based on Ordnance Survey material with the permission of Ordnance Survey on behalf of the controller of Her Majesty's Stationery Office. Crown copyright. Unauthorised reproduction infringes Crown copyright and may lead to prosecution or civil proceedings. Scottish Executive Licence Number, 100020540 (2007).

Rev	Date	Purpose of Revision	Drwn	Chkd	Appd

**JE JACOBS**  
 95 Bothwell Street, Glasgow, G2 7HX, UK  
 Tel: 0141 204 2511 Fax: 0141 226 3109  
 www.jacobsbattle.com

Client: **Aberdeen Western Peripheral Route**

Project: **Aberdeen Western Peripheral Route  
 Environmental Statement, Part C - Southern Leg**

Title: **Topography & Drainage  
 Sheet 1 of 3**

Drawing Status	FINAL	Revisions	
JB No.	0010332	Date	July 2007
Figure No.	FIGURE 26.3a	Checked	ML
Scale	1:25,000	Approved	SH
Drawn	MY		

This drawing is not to be used in whole or part other than for the intended purpose and project as defined on this drawing. Refer to the contract for full terms and conditions. Maps produced by Jacobs UK Ltd. This map should NOT be rescaled. Copyright reserved.

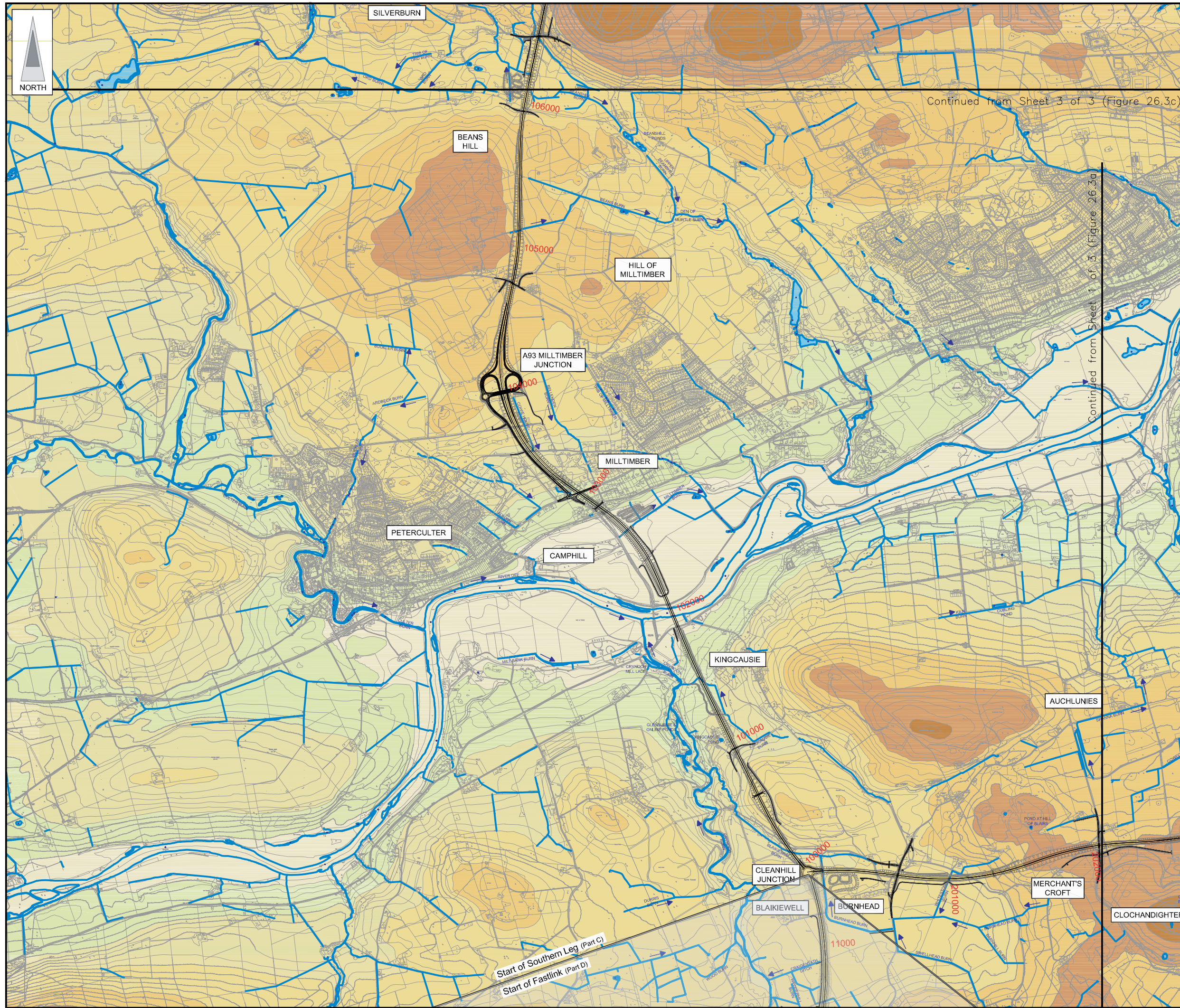
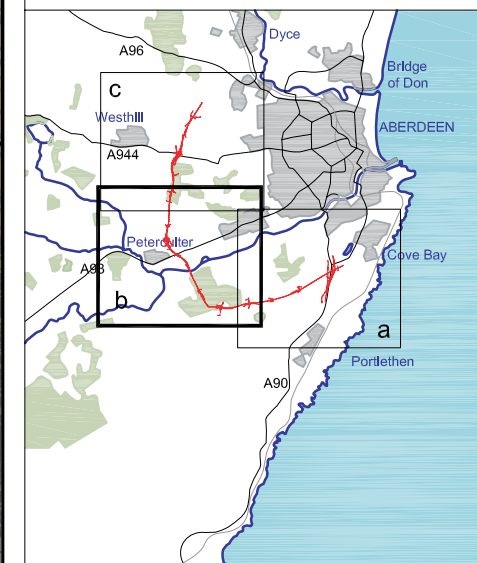


FIGURE 26.3b



**LEGEND**

- Proposed Route (Engineering Profile 04/05/07)
- Watercourses
- Direction of Flow
- Waterbody
- 250 - 275m
  - 225 - 250m
  - 200 - 225m
  - 175 - 200m
  - 150 - 175m
  - 125-150m
  - 100-125m
  - 75-100m
  - 50-75m
  - 25-50m
  - 0-25m
  - Below 0m

Rev	Date	Purpose of Revision	Drwn	Chkd	Appd

**JE JACOBS**  
 95 Bothwell Street, Glasgow, G2 7HX, UK  
 Tel: 0141 204 2511 Fax: 0141 226 3109  
 www.jacobsable.com

Client: Aberdeen Western Peripheral Route

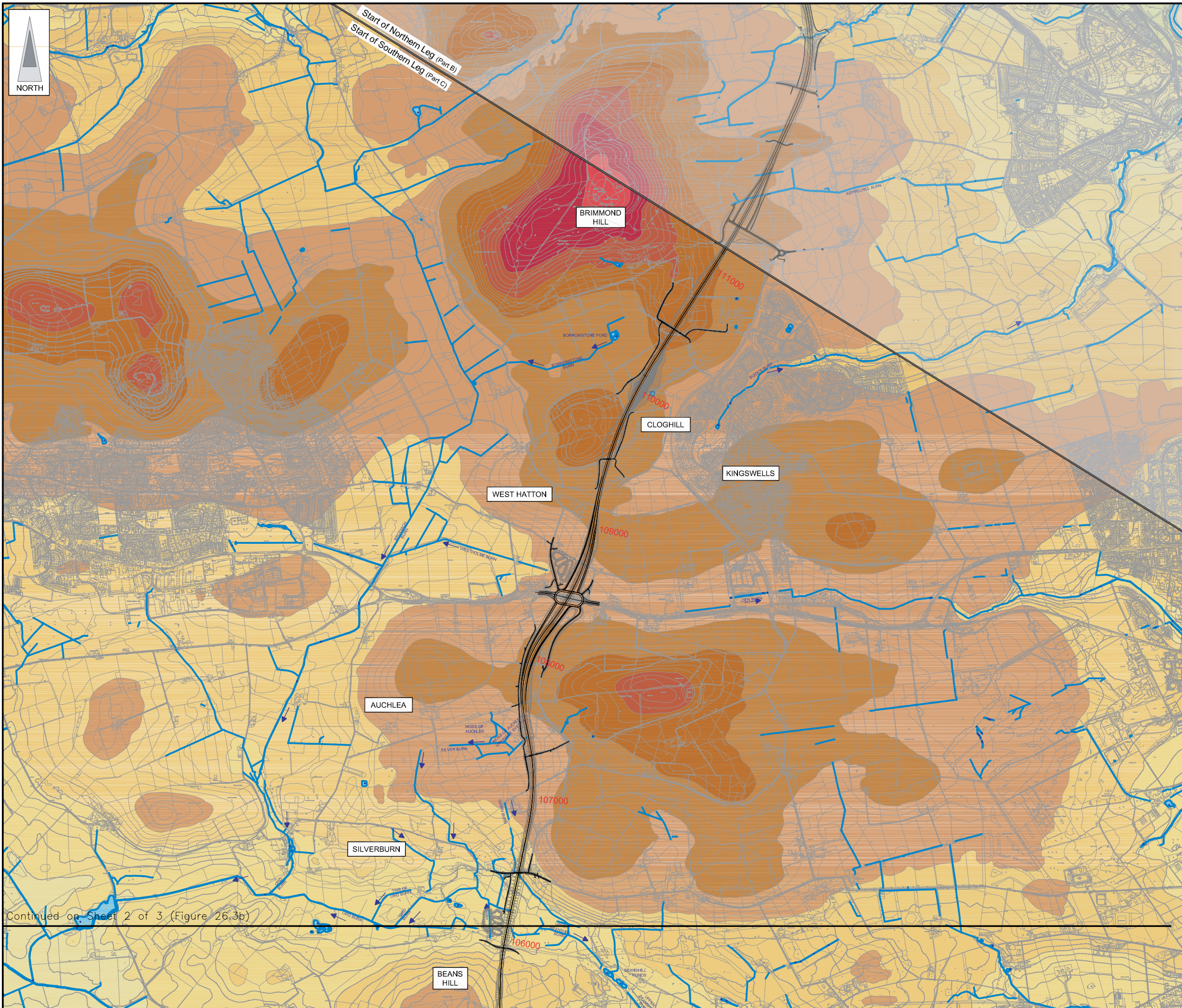
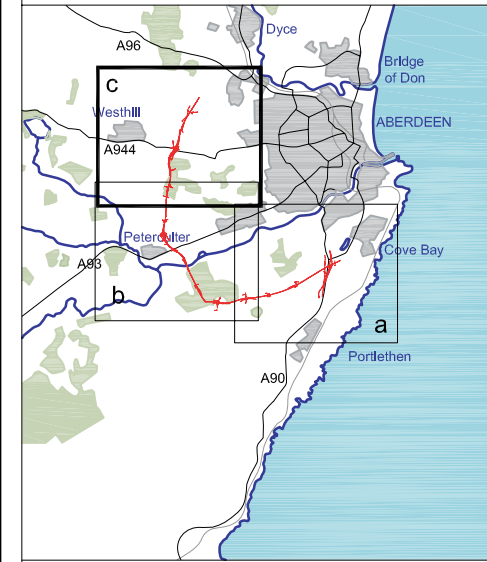
Project: Aberdeen Western Peripheral Route  
 Environmental Statement, Part C - Southern Leg

Title: Topography & Drainage  
 Sheet 2 of 3

Drawing Status	FINAL	Revisions	
JB No.	0010332	Date	July 2007
Figure No.	FIGURE 26.3b	Checked	ML
Scale	1:25,000	Approved	SH
Drawn	MY	Signature	

This map is based on Ordnance Survey material with the permission of Ordnance Survey on behalf of the controller of Her Majesty's Stationary Office. Unauthorised reproduction infringes Crown copyright and may lead to prosecution or civil proceedings. Scottish Executive Licence Number, 100020540 (2007). Maps produced by Jacobs UK Ltd. This map should NOT be rescaled. Copyright reserved.

FIGURE 26.3c



Continued on Sheet 2 of 3 (Figure 26.3b)

**LEGEND**

- Proposed Route (Engineering Profile 04/05/07)
- Watercourses
- Direction of Flow
- Waterbody
- 250 - 275m
- 225 - 250m
- 200 - 225m
- 175 - 200m
- 150 - 175m
- 125 - 150m
- 100 - 125m
- 75 - 100m
- 50 - 75m
- 25 - 50m
- 0 - 25m
- Below 0m

Rev	Date	Purpose of Revision	Drwn	Chkd	Appd

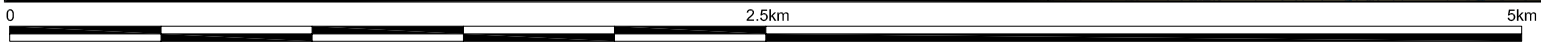
**JE JACOBS**  
 95 Bothwell Street, Glasgow, G2 7HX, UK  
 Tel: 0141 204 2511 Fax: 0141 226 3109  
 www.jacobstablie.com

Client: **Aberdeen Western Peripheral Route**

Project: **Aberdeen Western Peripheral Route Environmental Statement, Part C - Southern Leg**

Title: **Topography & Drainage Sheet 3 of 3**

Drawing Status	FINAL	Revisions	
JB No.	0010332	Date	July 2007
Figure No.	FIGURE 26.3c	Checked	ML
Scale	1:25,000	Approved	SH
Drawn	MY	Signature	



This map is based on Ordnance Survey material with the permission of Ordnance Survey on behalf of the controller of Her Majesty's Stationery Office. Crown copyright. Unauthorised reproduction infringes Crown copyright and may lead to prosecution or civil proceedings. Scottish Executive Licence Number, 100020540 (2007).

This drawing is not to be used in whole or part other than for the intended purpose and project as defined on this drawing. Refer to the contract for full terms and conditions. Maps produced by Jacobs UK Ltd. This map should NOT be rescaled. Copyright reserved.