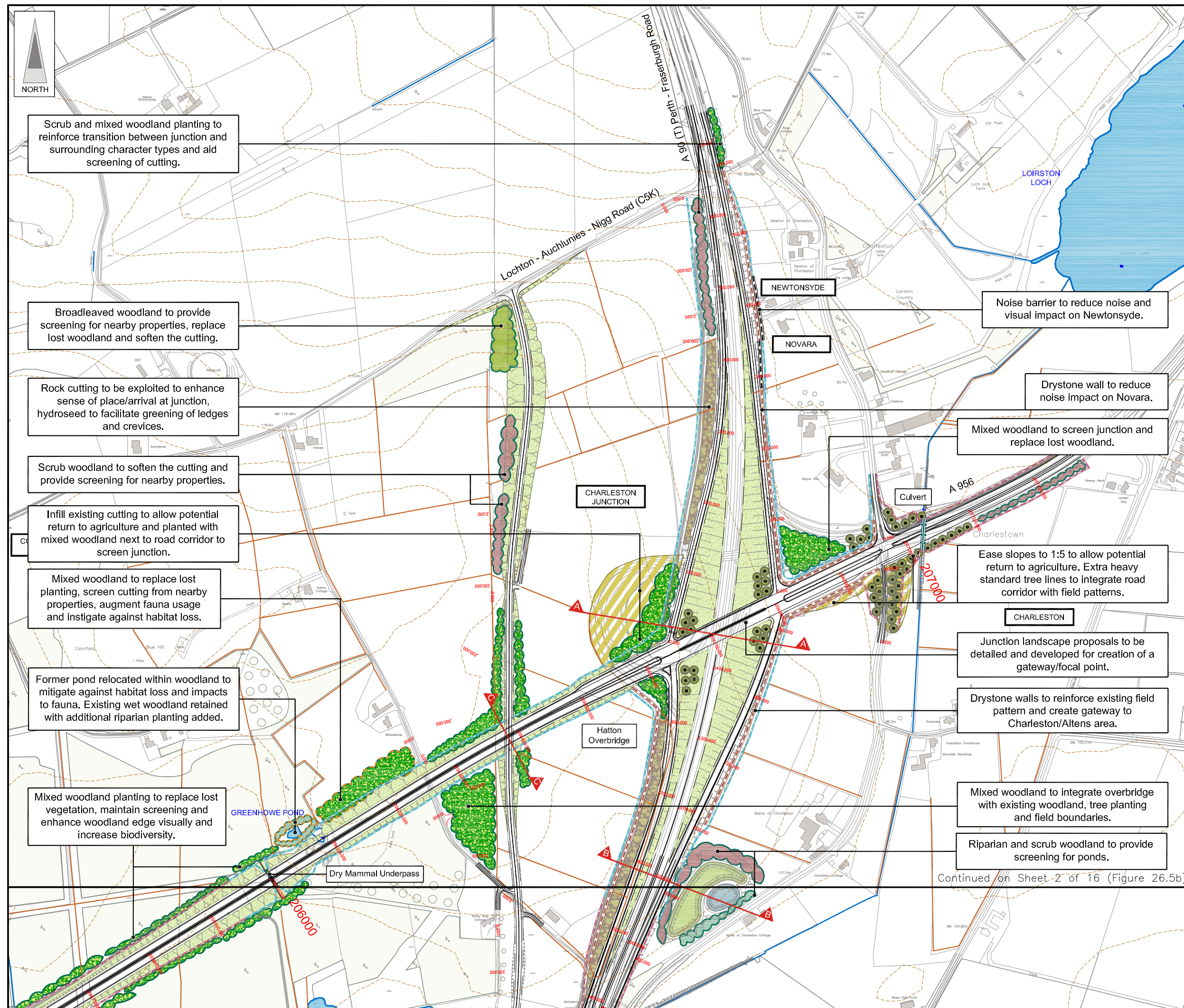


FIGURE 26.5a



Scrub and mixed woodland planting to reinforce transition between junction and surrounding character types and aid screening of cutting.

Broadleaved woodland to provide screening for nearby properties, replace lost woodland and soften the cutting.

Rock cutting to be exploited to enhance sense of place/arrival at junction, hydroseeded to facilitate greening of ledges and crevices.

Scrub woodland to soften the cutting and provide screening for nearby properties.

Infill existing cutting to allow potential return to agriculture and planted with mixed woodland next to road corridor to screen junction.

Mixed woodland to replace lost planting, screen cutting from nearby properties, augment fauna usage and instigate against habitat loss.

Former pond relocated within woodland to mitigate against habitat loss and impacts to fauna. Existing wet woodland retained with additional riparian planting added.

Mixed woodland planting to replace lost vegetation, maintain screening and enhance woodland edge visually and increase biodiversity.

Noise barrier to reduce noise and visual impact on Newtonsyde.

Drystone wall to reduce noise impact on Novara.

Mixed woodland to screen junction and replace lost woodland.

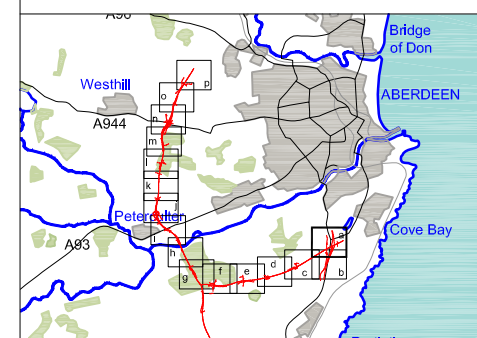
Ease slopes to 1:5 to allow potential return to agriculture. Extra heavy standard tree lines to integrate road corridor with field patterns.

Junction landscape proposals to be detailed and developed for creation of a gateway/focal point.

Drystone walls to reinforce existing field pattern and create gateway to Charleston/Altens area.

Mixed woodland to integrate overbridge with existing woodland, tree planting and field boundaries.

Riparian and scrub woodland to provide screening for ponds.



LEGEND

- Proposed Route (Engineering Profile 04/05/07)
- Detention Basins & Treatment Ponds
 - Green - Detention Basin
 - Blue - Treatment Pond
- Existing Vegetation / Retained Vegetation
- Existing Watercourses & Water Bodies
- Existing Contours (5m Intervals)
- Drystone Wall
- Cross Section Locations
- BP / Shell Pipelines

Planting Mitigation Proposals

- Landscape Planting Proposals Only
- Ecological Planting Proposals Only
- Ecological & Landscape Planting
- Mixed Woodland Planting
- Coniferous Woodland Planting
- Broadleaved Woodland Planting
- Scrub Woodland Planting
- Riparian Woodland

Landscape Mitigation Proposals

- Species Rich Grassland
- Potential Rock Cut (sown with pockets of native seed)
- Potential to Return to Agriculture
- Feathered Tree Planting (Groups of 10 Min)
- Extra Heavy Standard Trees/Standard Trees
- Hedgerow
- Proposed Drystone Wall
- Proposed Noise Barrier

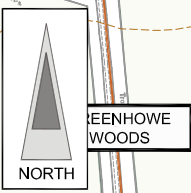
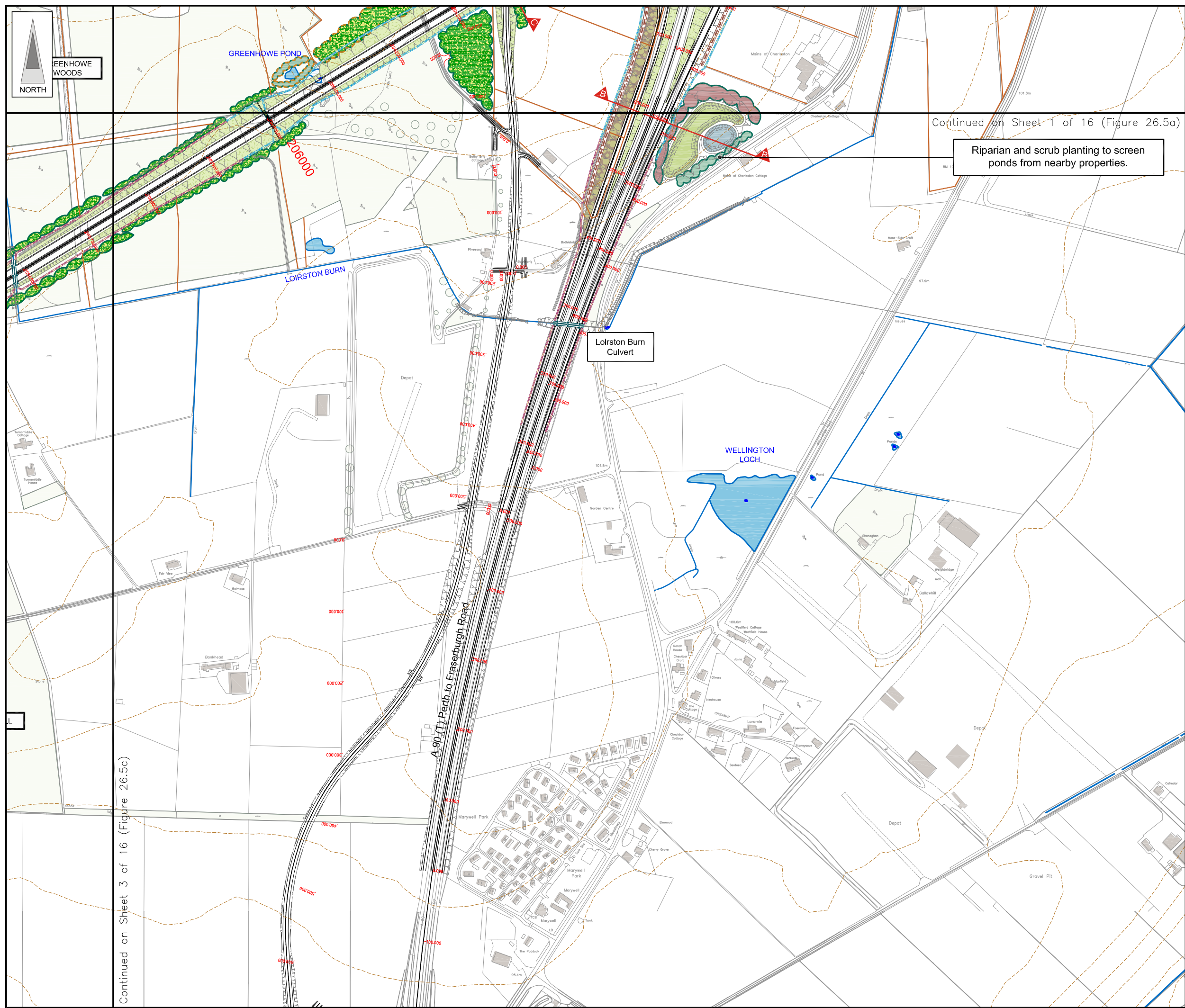
Ecological Mitigation Proposals

- Dry Mammal Underpass
- Wildlife Bridge
- Culvert / Bridge (see individual labels)
- Re-aligned Watercourse
- Otter Fence / Badger Fence
- Bat Box Provision
- Re-located Otter Holts

JE JACOBS
 95 Bothwell Street, Glasgow, G2 7HX, UK
 Tel: 0141 204 2511 Fax: 0141 226 3109
 www.jacobsbabtie.com

Client	Aberdeen Western Peripheral Route		
Project	Aberdeen Western Peripheral Route Environmental Statement, Part C - Southern Section		
Title	Landscape and Ecological Mitigation Sheet 1 of 16		
Drawing Status	FINAL	Revisions	
JB No.	0010332	Date	July 2007
Figure No.	FIGURE 26.5a	Checked	MS
Scale	1:5,000 @ A3	Approved	SH
Drawn	AG	Checked	MS

This drawing is not to be used in whole or part other than for the intended purpose and project as defined on this drawing. Refer to the contract for full terms and conditions. Maps produced by Jacobs UK Ltd. This map should NOT be rescaled. Copyright reserved.

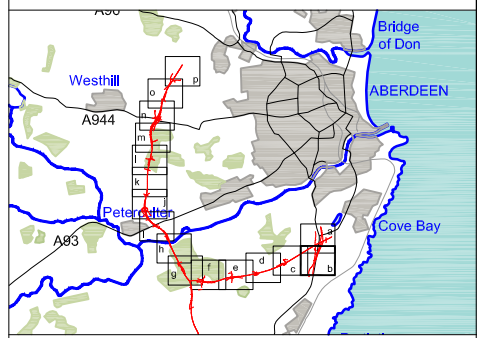


Continued on Sheet 1 of 16 (Figure 26.5a)

Riparian and scrub planting to screen ponds from nearby properties.

Continued on Sheet 3 of 16 (Figure 26.5c)

FIGURE 26.5b

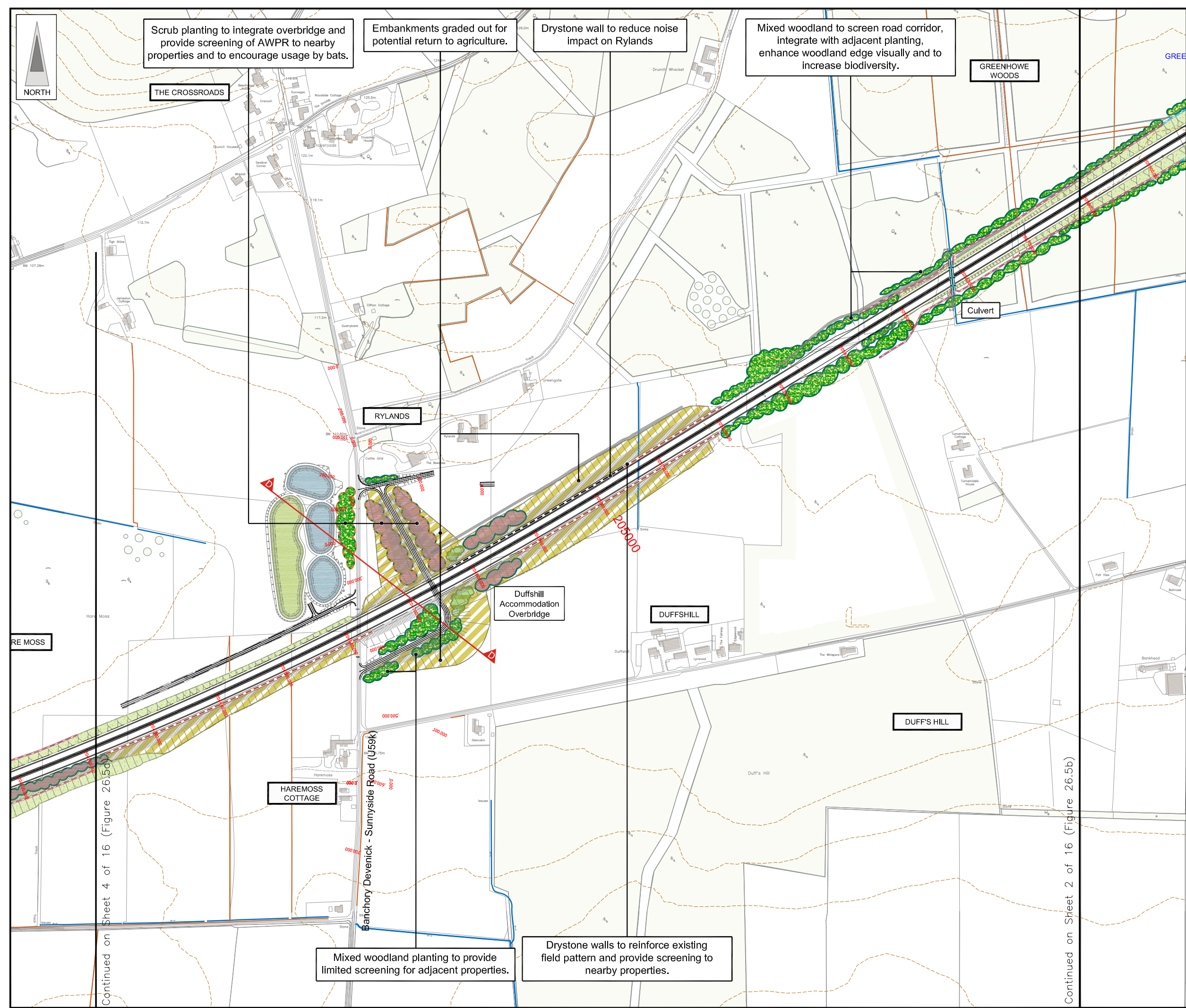
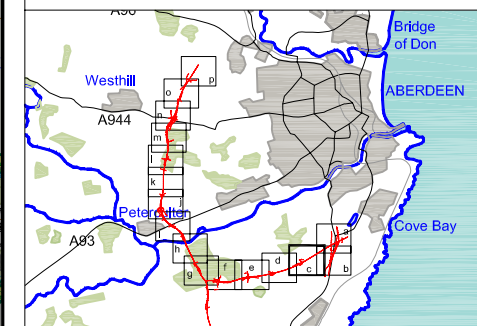


- LEGEND**
- Proposed Route (Engineering Profile 04/05/07)
 - Detention Basins & Treatment Ponds
Green - Detention Basin
Blue - Treatment Pond
 - Existing Vegetation / Retained Vegetation
 - Existing Watercourses & Water Bodies
 - Existing Contours (5m intervals)
 - Drystone Wall
 - Cross Section Locations
 - BP / Shell Pipelines
- Planting Mitigation Proposals**
- Landscape Planting Proposals Only
 - Ecological Planting Proposals Only
 - Ecological & Landscape Planting
 - Mixed Woodland Planting
 - Coniferous Woodland Planting
 - Broadleaved Woodland Planting
 - Scrub Woodland Planting
 - Riparian Woodland
- Landscape Mitigation Proposals**
- Species Rich Grassland
 - Potential Rock Cut (sown with pockets of native seed)
 - Potential to Return to Agriculture
 - Feathered Tree Planting (Groups of 10 Min)
 - Extra Heavy Standard Trees/Standard Trees
 - Hedgerow
 - Proposed Drystone Wall
 - Proposed Noise Barrier
- Ecological Mitigation Proposals**
- Dry Mammal Underpass
 - Wildlife Bridge
 - Culvert / Bridge (see individual labels)
 - Re-aligned Watercourse
 - Otter Fence / Badger Fence
 - Bat Box Provision
 - Re-located Otter Holes

JE JACOBS
 95 Bothwell Street, Glasgow, G2 7HX, UK
 Tel: 0141 204 2511 Fax: 0141 226 3109
 www.jacobstabtie.com

Client			
Project	Aberdeen Western Peripheral Route Environmental Statement, Part C - Southern Leg		
Title	Landscape and Ecological Mitigation Sheet 2 of 16		
Drawing Status	FINAL	Revisions	
JB No.	0010332	Checked	MS
Figure No.	FIGURE 26.5b	Date	July 2007
Scale	1:5,000 @ A3	Approved	SH
Drawn	AG	Checked	MS

FIGURE 26.5c



LEGEND

- Proposed Route (Engineering Profile 04/05/07)
- Detention Basins & Treatment Ponds
 - Green - Detention Basin
 - Blue - Treatment Pond
- Existing Vegetation / Retained Vegetation
- Existing Watercourses & Water Bodies
- Existing Contours (5m Intervals)
- Drystone Wall
- Cross Section Locations
- BP / Shell Pipelines

Planting Mitigation Proposals

- Landscape Planting Proposals Only
- Ecological Planting Proposals Only
- Ecological & Landscape Planting
- Mixed Woodland Planting
- Coniferous Woodland Planting
- Broadleaved Woodland Planting
- Scrub Woodland Planting
- Riparian Woodland

Landscape Mitigation Proposals

- Species Rich Grassland
- Potential Rock Cut (sown with pockets of native seed)
- Potential to Return to Agriculture
- Feathered Tree Planting (Groups of 10 Min)
- Extra Heavy Standard Trees/Standard Trees
- Hedgerow
- Proposed Drystone Wall
- Proposed Noise Barrier

Ecological Mitigation Proposals

- Dry Mammal Underpass
- Wildlife Bridge
- Culvert / Bridge (see individual labels)
- Re-aligned Watercourse
- Otter Fence / Badger Fence
- Bat Box Provision
- Re-located Otter Holes

JE JACOBS
 95 Bothwell Street, Glasgow, G2 7HX, UK
 Tel: 0141 204 2511 Fax: 0141 226 3109
 www.jacobstabtie.com

Client: Aberdeen Western Peripheral Route

Project: Aberdeen Western Peripheral Route Environmental Statement, Part C - Southern Leg

Title: Landscape and Ecological Mitigation Sheet 3 of 16

Drawing Status: FINAL
 JB No: 0010332
 Figure No: FIGURE 26.5c
 Scale: 1:5,000 @ A3
 Date: July 2007

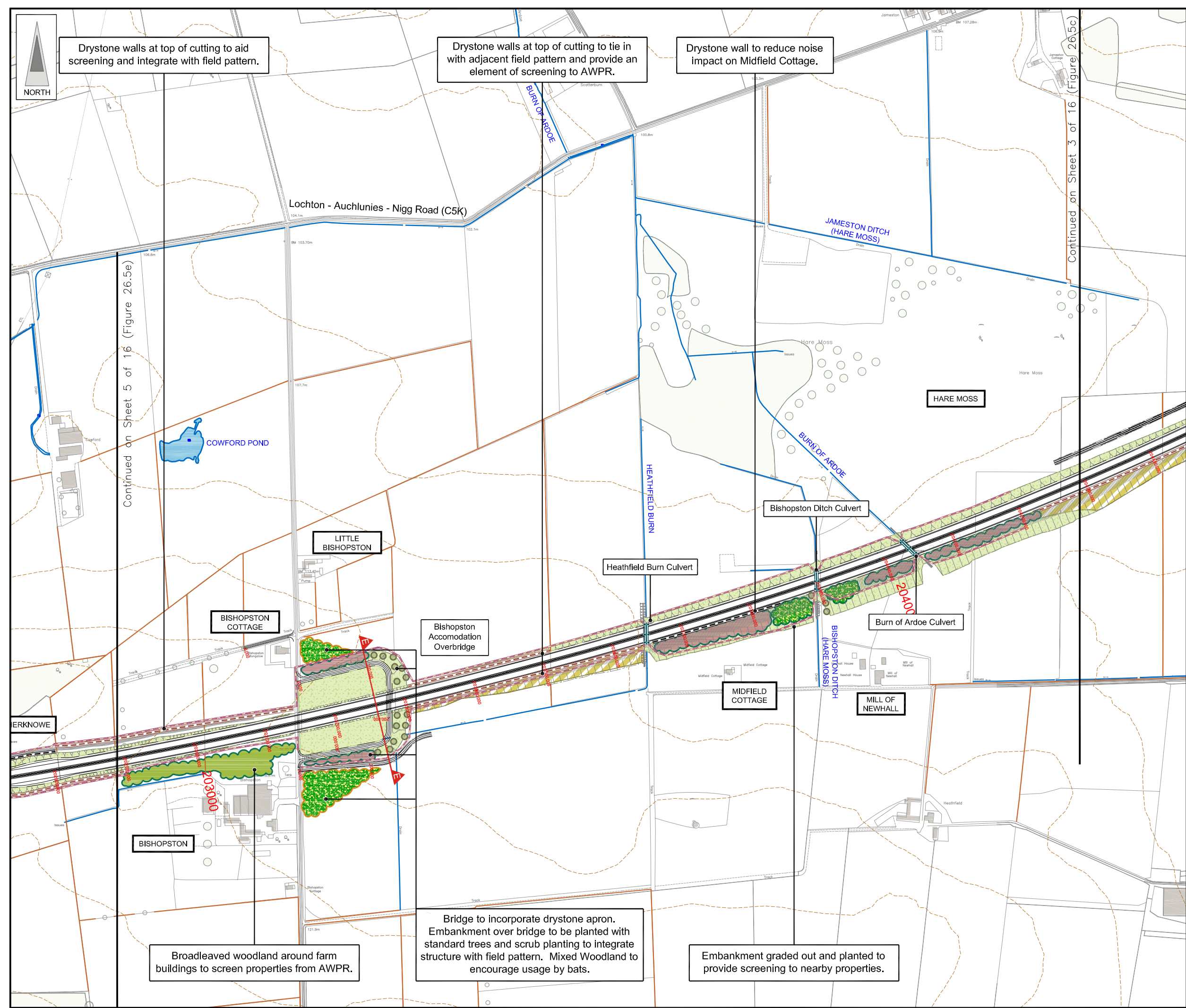
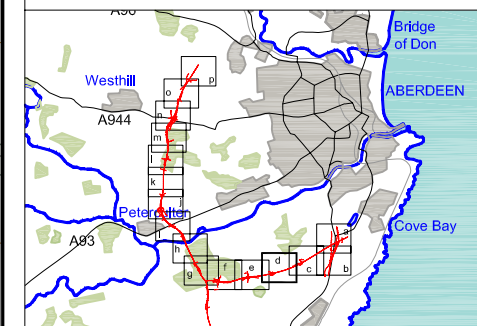
Drawn	AG	Checked	MS	Approved	SH
-------	----	---------	----	----------	----

Revisions

1		
---	--	--

This drawing is not to be used in whole or part other than for the intended purpose and project as defined on this drawing. Refer to the contract for full terms and conditions. Maps produced by Jacobs UK Ltd. This map should NOT be rescaled. Copyright reserved.

FIGURE 26.5d



LEGEND

- Proposed Route (Engineering Profile 04/05/07)
- Detention Basins & Treatment Ponds
 - Green - Detention Basin
 - Blue - Treatment Pond
- Existing Vegetation / Retained Vegetation
- Existing Watercourses & Water Bodies
- Existing Contours (5m Intervals)
- Drystone Wall
- Cross Section Locations
- BP / Shell Pipelines

Planting Mitigation Proposals

- Landscape Planting Proposals Only
- Ecological Planting Proposals Only
- Ecological & Landscape Planting
- Mixed Woodland Planting
- Coniferous Woodland Planting
- Broadleaved Woodland Planting
- Scrub Woodland Planting
- Riparian Woodland

Landscape Mitigation Proposals

- Species Rich Grassland
- Potential Rock Cut (sown with pockets of native seed)
- Potential to Return to Agriculture
- Feathered Tree Planting (Groups of 10 Min)
- Extra Heavy Standard Trees/Standard Trees
- Hedgerow
- Proposed Drystone Wall
- Proposed Noise Barrier

Ecological Mitigation Proposals

- Dry Mammal Underpass
- Wildlife Bridge
- Culvert / Bridge (see individual labels)
- Re-aligned Watercourse
- Otter Fence / Badger Fence
- Bat Box Provision
- Re-located Otter Holes

JE JACOBS
 95 Bothwell Street, Glasgow, G2 7HX, UK
 Tel: 0141 204 2511 Fax: 0141 226 3109
 www.jacobstabble.com

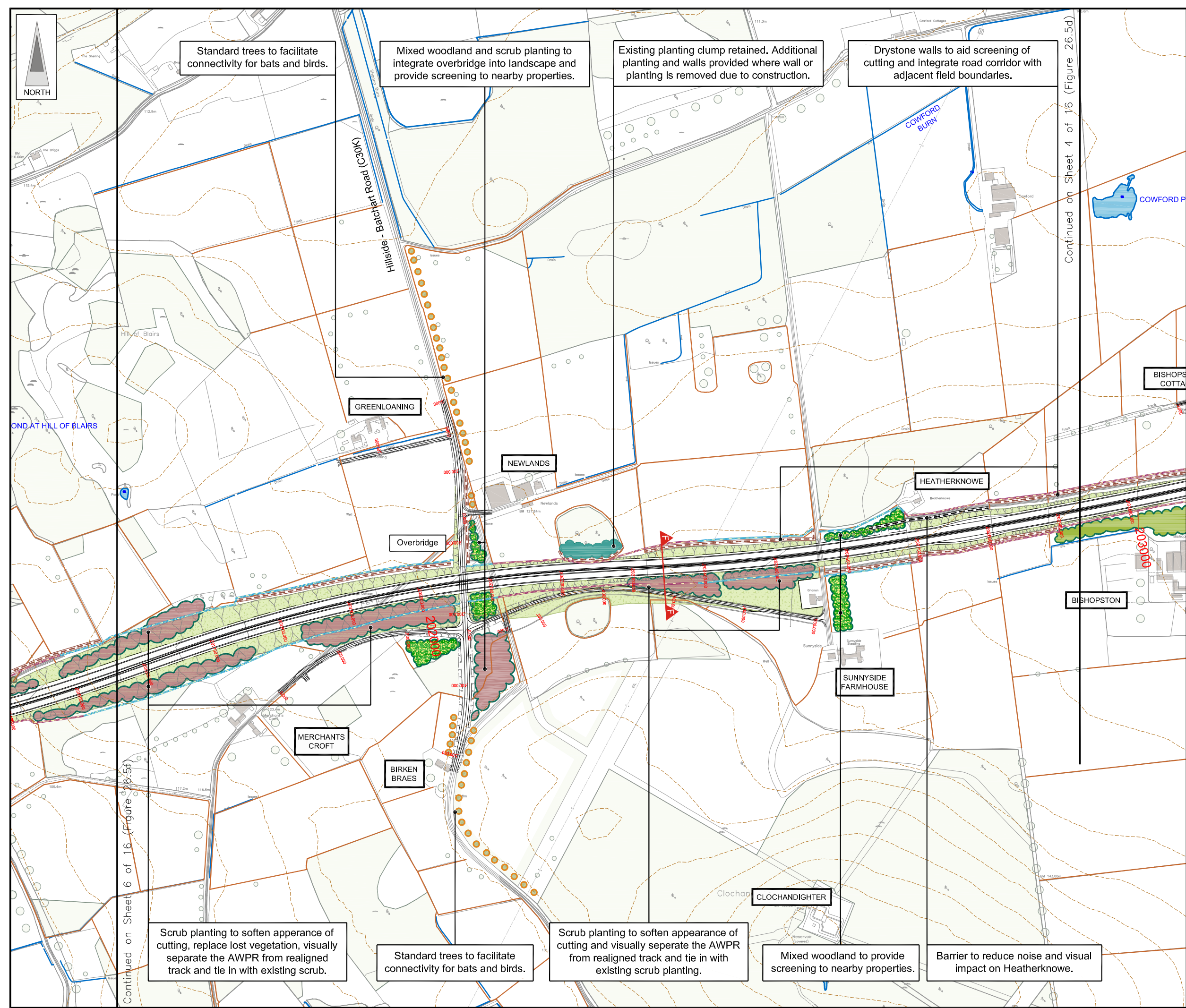
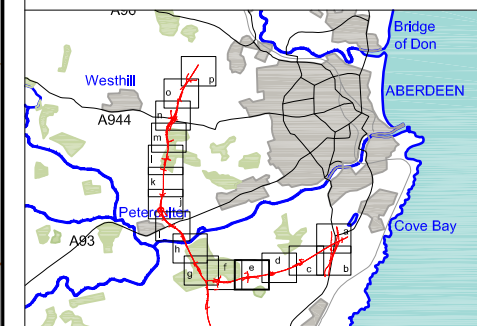
Client: **Aberdeen Western Peripheral Route**

Project: **Aberdeen Western Peripheral Route Environmental Statement, Part C - Southern Leg**

Title: **Landscape and Ecological Mitigation**
 Sheet 4 of 16

Drawing Status	FINAL	Revisions	
JB No.	0010332	Date	July 2007
Figure No.	FIGURE 26.5d	Checked	MS
Scale	1:5,000 @ A3	Approved	SH
Drawn	AG	Checked	MS
		Approved	SH

FIGURE 26.5e



Standard trees to facilitate connectivity for bats and birds.

Mixed woodland and scrub planting to integrate overbridge into landscape and provide screening to nearby properties.

Existing planting clump retained. Additional planting and walls provided where wall or planting is removed due to construction.

Drystone walls to aid screening of cutting and integrate road corridor with adjacent field boundaries.

Scrub planting to soften appearance of cutting, replace lost vegetation, visually separate the AWPR from realigned track and tie in with existing scrub.

Standard trees to facilitate connectivity for bats and birds.

Scrub planting to soften appearance of cutting and visually separate the AWPR from realigned track and tie in with existing scrub planting.

Mixed woodland to provide screening to nearby properties.

Barrier to reduce noise and visual impact on Heatherknowe.

LEGEND

- Proposed Route (Engineering Profile 04/05/07)
- Detention Basins & Treatment Ponds
 - Green - Detention Basin
 - Blue - Treatment Pond
- Existing Vegetation / Retained Vegetation
- Existing Watercourses & Water Bodies
- Existing Contours (5m Intervals)
- Drystone Wall
- Cross Section Locations
- BP / Shell Pipelines

Planting Mitigation Proposals

- Landscape Planting Proposals Only
- Ecological Planting Proposals Only
- Ecological & Landscape Planting
- Mixed Woodland Planting
- Coniferous Woodland Planting
- Broadleaved Woodland Planting
- Scrub Woodland Planting
- Riparian Woodland

Landscape Mitigation Proposals

- Species Rich Grassland
- Potential Rock Cut (sown with pockets of native seed)
- Potential to Return to Agriculture
- Feathered Tree Planting (Groups of 10 Min)
- Extra Heavy Standard Trees/Standard Trees
- Hedgerow
- Proposed Drystone Wall
- Proposed Noise Barrier

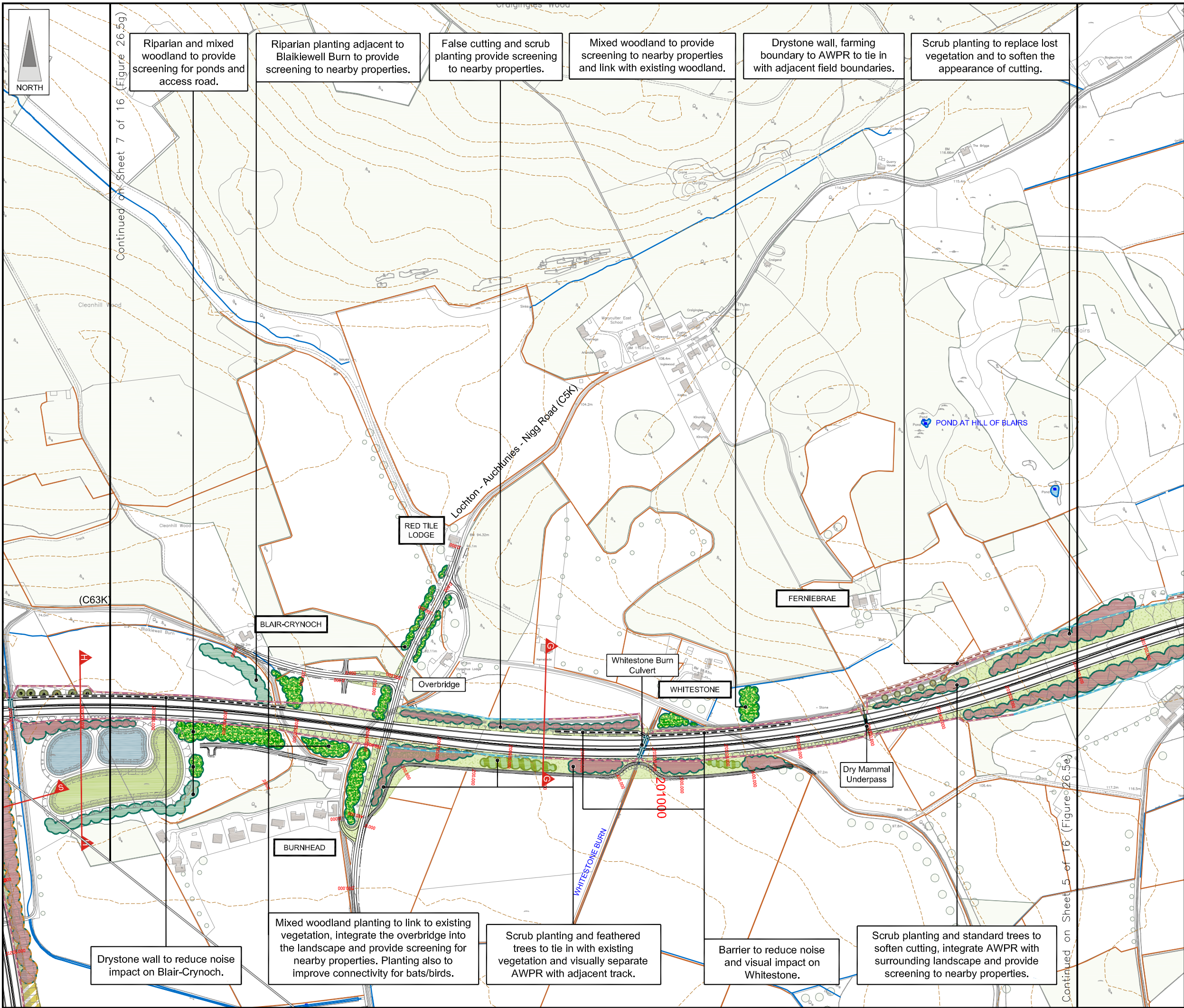
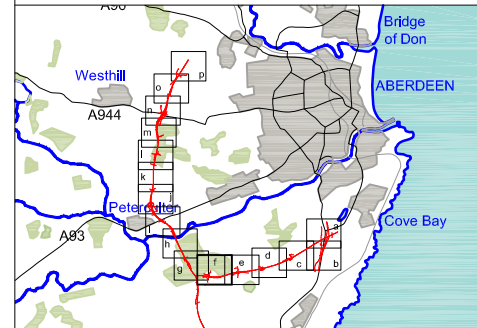
Ecological Mitigation Proposals

- Dry Mammal Underpass
- Wildlife Bridge
- Culvert / Bridge (see individual labels)
- Re-aligned Watercourse
- Otter Fence / Badger Fence
- Bat Box Provision
- Re-located Otter Holes

JE JACOBS
 95 Bothwell Street, Glasgow, G2 7HX, UK
 Tel: 0141 204 2511 Fax: 0141 226 3109
 www.jacobstabtie.com

Client	Aberdeen Western Peripheral Route		
Project	Aberdeen Western Peripheral Route Environmental Statement, Part C - Southern Leg		
Title	Landscape and Ecological Mitigation Sheet 5 of 16		
Drawing Status	FINAL	Revisions	
JB No.	0010332	Checked	MS
Figure No.	FIGURE 26.5e	Date	July 2007
Scale	1:5,000 @ A3	Approved	SH
Drawn	AG	Checked	MS

FIGURE 26.5f



Riparian and mixed woodland to provide screening for ponds and access road.

Riparian planting adjacent to Blaikiewell Burn to provide screening to nearby properties.

False cutting and scrub planting provide screening to nearby properties.

Mixed woodland to provide screening to nearby properties and link with existing woodland.

Drystone wall, farming boundary to AWPR to tie in with adjacent field boundaries.

Scrub planting to replace lost vegetation and to soften the appearance of cutting.

Drystone wall to reduce noise impact on Blair-Crynoch.

Mixed woodland planting to link to existing vegetation, integrate the overbridge into the landscape and provide screening for nearby properties. Planting also to improve connectivity for bats/birds.

Scrub planting and feathered trees to tie in with existing vegetation and visually separate AWPR with adjacent track.

Barrier to reduce noise and visual impact on Whitestone.

Scrub planting and standard trees to soften cutting, integrate AWPR with surrounding landscape and provide screening to nearby properties.

LEGEND

- Proposed Route (Engineering Profile 04/05/07)
- Detention Basins & Treatment Ponds
 - Green - Detention Basin
 - Blue - Treatment Pond
- Existing Vegetation / Retained Vegetation
- Existing Watercourses & Water Bodies
- Existing Contours (5m intervals)
- Drystone Wall
- Cross Section Locations
- BP / Shell Pipelines

Planting Mitigation Proposals

- Landscape Planting Proposals Only
- Ecological Planting Proposals Only
- Ecological & Landscape Planting
- Mixed Woodland Planting
- Coniferous Woodland Planting
- Broadleaved Woodland Planting
- Scrub Woodland Planting
- Riparian Woodland

Landscape Mitigation Proposals

- Species Rich Grassland
- Potential Rock Cut (sown with pockets of native seed)
- Potential to Return to Agriculture
- Feathered Tree Planting (Groups of 10 Min)
- Extra Heavy Standard Trees/Standard Trees
- Hedgerow
- Proposed Drystone Wall
- Proposed Noise Barrier

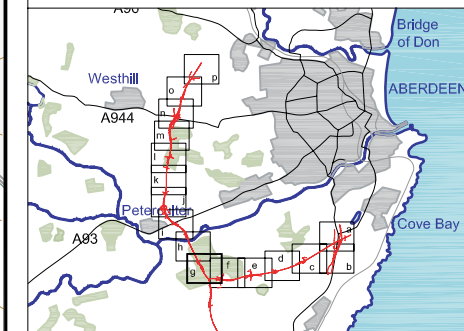
Ecological Mitigation Proposals

- Dry Mammal Underpass
- Wildlife Bridge
- Culvert / Bridge (see individual labels)
- Re-aligned Watercourse
- Otter Fence / Badger Fence
- Bat Box Provision
- Re-located Otter Holes

JE JACOBS
 95 Bothwell Street, Glasgow, G2 7HX, UK
 Tel: 0141 204 2511 Fax: 0141 226 3109
 www.jacobsabtie.com

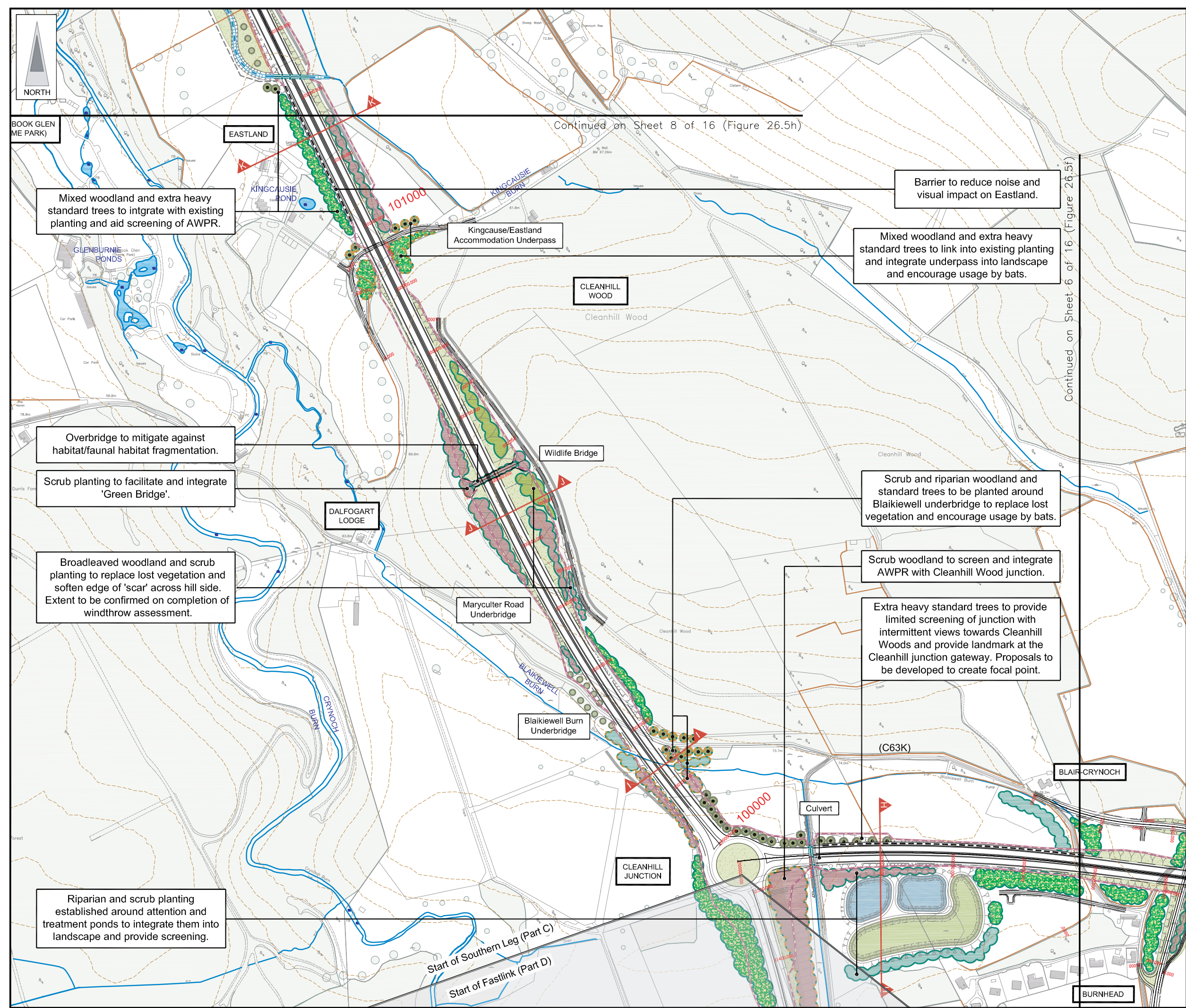
Client	Aberdeen Western Peripheral Route		
Project	Aberdeen Western Peripheral Route Environmental Statement, Part C - Southern Leg		
Title	Landscape and Ecological Mitigation Sheet 6 of 16		
Drawing Status	FINAL	Revisions	
JB No.	0010332	Date	July 2007
Figure No.	FIGURE 26.5f	Checked	MS
Scale	1:5,000 @ A3	Approved	SH
Drawn	AG	Checked	MS
Approved		Checked	MS
Approved		Checked	SH

FIGURE 26.5g



Continued on Sheet 8 of 16 (Figure 26.5h)

Continued on Sheet 6 of 16 (Figure 26.5f)



Mixed woodland and extra heavy standard trees to integrate with existing planting and aid screening of AWPR.

Barrier to reduce noise and visual impact on Eastland.

Mixed woodland and extra heavy standard trees to link into existing planting and integrate underpass into landscape and encourage usage by bats.

Overbridge to mitigate against habitat/faunal habitat fragmentation.

Scrub planting to facilitate and integrate 'Green Bridge'.

Broadleaved woodland and scrub planting to replace lost vegetation and soften edge of 'scar' across hill side. Extent to be confirmed on completion of windthrow assessment.

Scrub and riparian woodland and standard trees to be planted around Blaikiewell underbridge to replace lost vegetation and encourage usage by bats.

Scrub woodland to screen and integrate AWPR with Cleanhill Wood junction.

Extra heavy standard trees to provide limited screening of junction with intermittent views towards Cleanhill Woods and provide landmark at the Cleanhill junction gateway. Proposals to be developed to create focal point.

Riparian and scrub planting established around attention and treatment ponds to integrate them into landscape and provide screening.

LEGEND

- Proposed Route (Engineering Profile 04/05/07)
- Detention Basins & Treatment Ponds
 - Green - Detention Basin
 - Blue - Treatment Pond
- Existing Vegetation / Retained Vegetation
- Existing Watercourses & Water Bodies
- Existing Contours (5m intervals)
- Drystone Wall
- Cross Section Locations
- BP / Shell Pipelines

Planting Mitigation Proposals

- Landscape Planting Proposals Only
- Ecological Planting Proposals Only
- Ecological & Landscape Planting
- Mixed Woodland Planting
- Coniferous Woodland Planting
- Broadleaved Woodland Planting
- Scrub Woodland Planting
- Riparian Woodland

Landscape Mitigation Proposals

- Species Rich Grassland
- Potential Rock Cut (sown with pockets of native seed)
- Potential to Return to Agriculture
- Feathered Tree Planting (Groups of 10 Min)
- Extra Heavy Standard Trees/Standard Trees
- Hedgerow
- Proposed Drystone Wall
- Proposed Noise Barrier

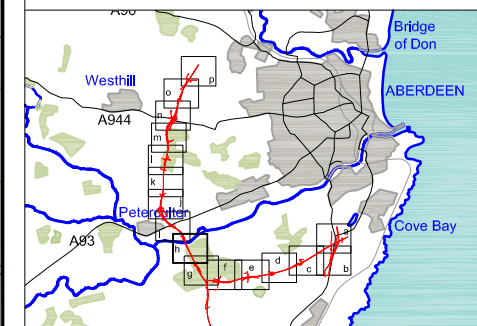
Ecological Mitigation Proposals

- Dry Mammal Underpass
- Wildlife Bridge
- Culvert / Bridge (see individual labels)
- Re-aligned Watercourse
- Otter Fence / Badger Fence
- Bat Box Provision
- Re-located Otter Holts

JE JACOBS
 95 Bothwell Street, Glasgow, G2 7HX, UK
 Tel: 0141 204 2511 Fax: 0141 226 3109
 www.jacobstablie.com

Client	Aberdeen Western Peripheral Route		
Project	Aberdeen Western Peripheral Route Environmental Statement, Part C - Southern Leg		
Title	Landscape and Ecological Mitigation Sheet 7 of 16		
Drawing Status	FINAL	Revisions	
JB No.	0010332	Checked	MS
Figure No.	FIGURE 26.5g	Date	July 2007
Scale	1:5,000 @ A3	Approved	SH
Drawn	AG	Checked	MS

FIGURE 26.5h



LEGEND

- Proposed Route (Engineering Profile 04/05/07)
- Detention Basins & Treatment Ponds
 - Green - Detention Basin
 - Blue - Treatment Pond
- Existing Vegetation / Retained Vegetation
- Existing Watercourses & Water Bodies
- Existing Contours (5m Intervals)
- Drystone Wall
- Cross Section Locations
- BP / Shell Pipelines

Planting Mitigation Proposals

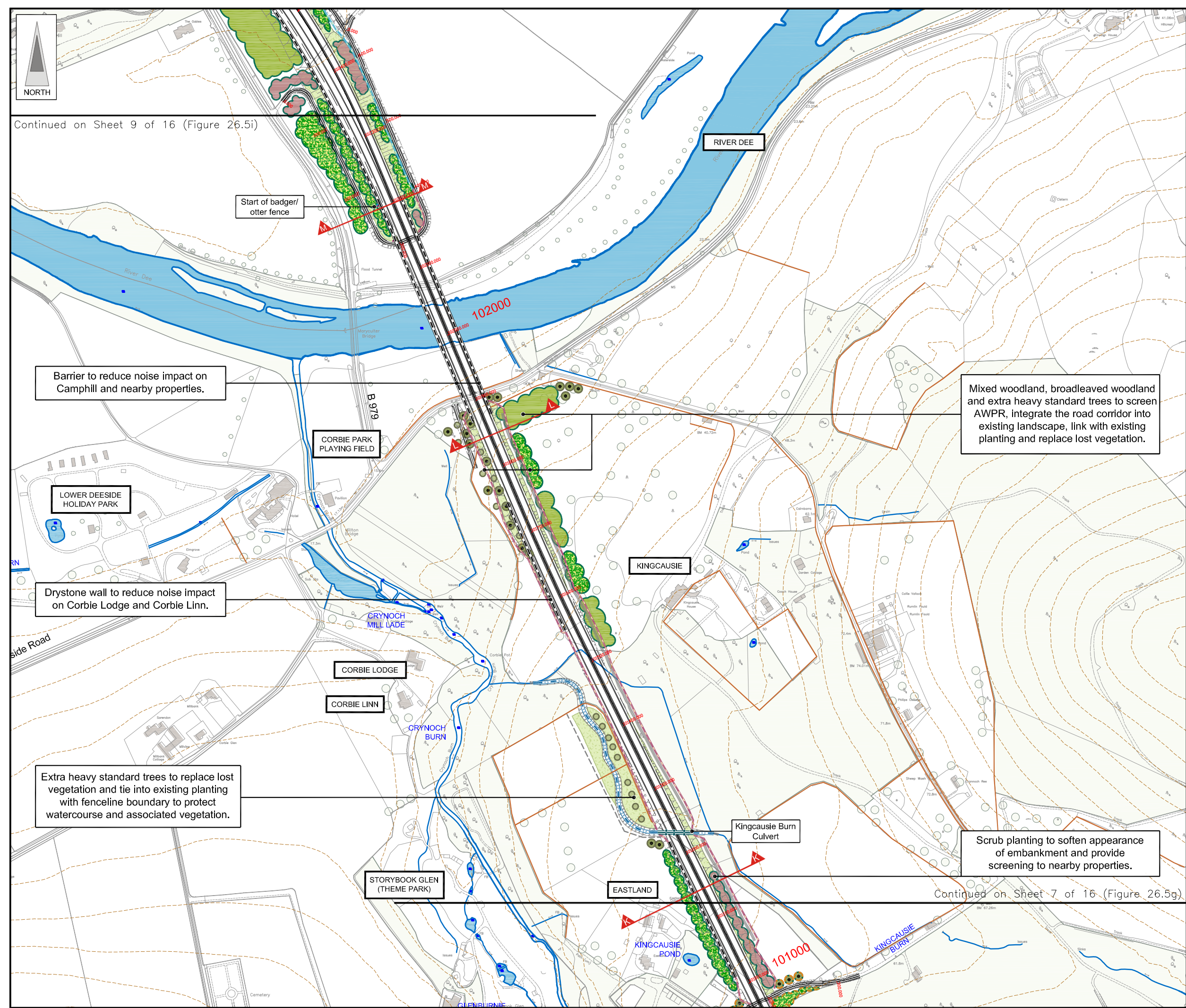
- Landscape Planting Proposals Only
- Ecological Planting Proposals Only
- Ecological & Landscape Planting
- Mixed Woodland Planting
- Coniferous Woodland Planting
- Broadleaved Woodland Planting
- Scrub Woodland Planting
- Riparian Woodland

Landscape Mitigation Proposals

- Species Rich Grassland
- Potential Rock Cut (sown with pockets of native seed)
- Potential to Return to Agriculture
- Feathered Tree Planting (Groups of 10 Min)
- Extra Heavy Standard Trees/Standard Trees
- Hedgerow
- Proposed Drystone Wall
- Proposed Noise Barrier

Ecological Mitigation Proposals

- Dry Mammal Underpass
- Wildlife Bridge
- Culvert / Bridge (see individual labels)
- Re-aligned Watercourse
- Otter Fence / Badger Fence
- Bat Box Provision
- Re-located Otter Holes



JE JACOBS
 95 Bothwell Street, Glasgow, G2 7HX, UK
 Tel: 0141 204 2511 Fax: 0141 226 3109
 www.jacobstabble.com

Client: Aberdeen Western Peripheral Route

Project: Aberdeen Western Peripheral Route Environmental Statement, Part C - Southern Leg

Title: Landscape and Ecological Mitigation Sheet 8 of 16

Drawing Status: FINAL
 JB No. 0010332

Figure No. FIGURE 26.5h

Scale: 1:5,000 @ A3

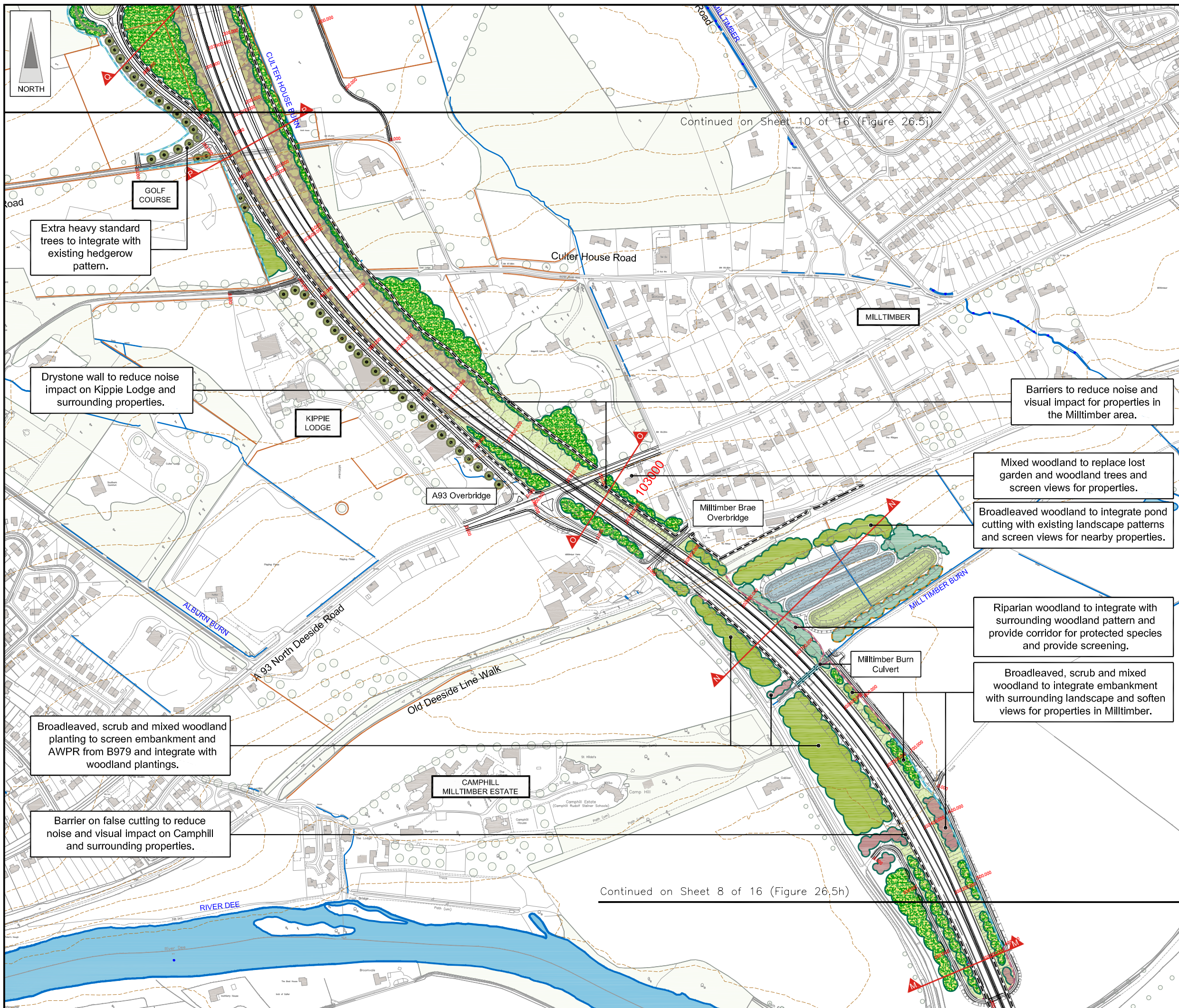
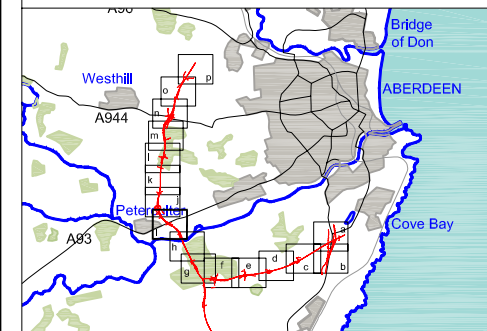
Drawn	AG	Checked	MS	Approved	SH
-------	----	---------	----	----------	----

Revisions

Date	July 2007
------	-----------

This drawing is not to be used in whole or part other than for the intended purpose and project as defined on this drawing. Refer to the contract for full terms and conditions. Maps produced by Jacobs UK Ltd. This map should NOT be rescaled. Copyright reserved.

FIGURE 26.5i



LEGEND

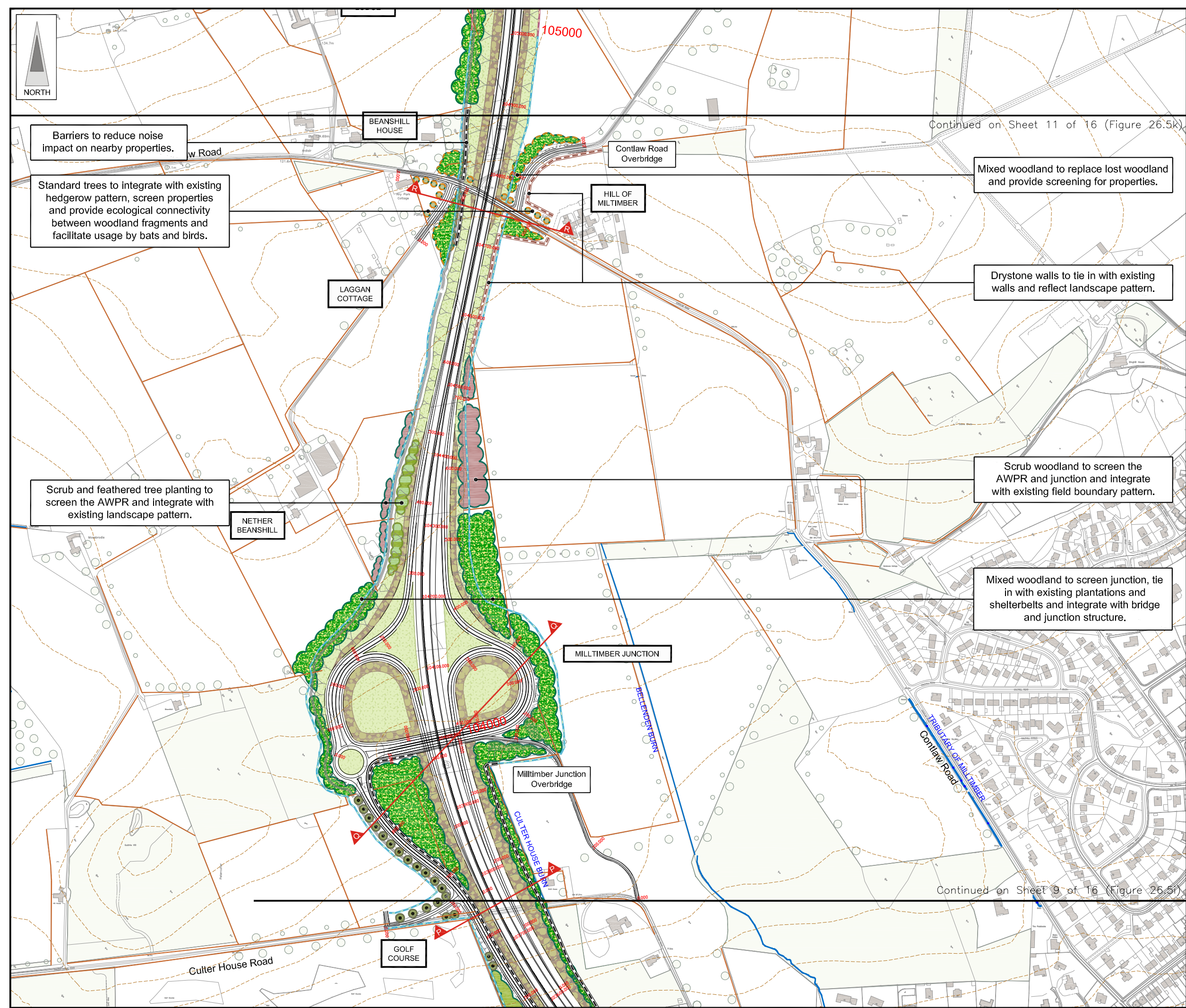
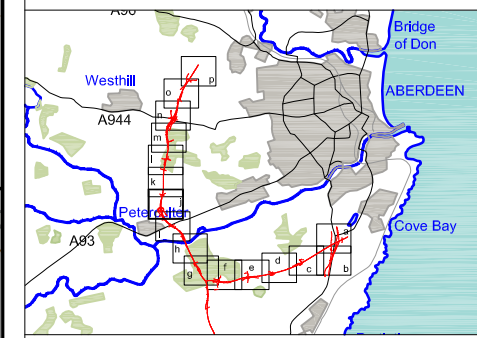
- Proposed Route (Engineering Profile 04/05/07)
 - Detention Basins & Treatment Ponds
Green - Detention Basin
Blue - Treatment Pond
 - Existing Vegetation / Retained Vegetation
 - Existing Watercourses & Water Bodies
 - Existing Contours (5m Intervals)
 - Drystone Wall
 - Cross Section Locations
 - BP / Shell Pipelines
- Planting Mitigation Proposals**
- Landscape Planting Proposals Only
 - Ecological Planting Proposals Only
 - Ecological & Landscape Planting
 - Mixed Woodland Planting
 - Coniferous Woodland Planting
 - Broadleaved Woodland Planting
 - Scrub Woodland Planting
 - Riparian Woodland
- Landscape Mitigation Proposals**
- Species Rich Grassland
 - Potential Rock Cut (sown with pockets of native seed)
 - Potential to Return to Agriculture
 - Feathered Tree Planting (Groups of 10 Min)
 - Extra Heavy Standard Trees/Standard Trees
 - Hedgerow
 - Proposed Drystone Wall
 - Proposed Noise Barrier
- Ecological Mitigation Proposals**
- Dry Mammal Underpass
 - Wildlife Bridge
 - Culvert / Bridge (see individual labels)
 - Re-aligned Watercourse
 - Otter Fence / Badger Fence
 - Bat Box Provision
 - Re-located Otter Holes

JE JACOBS
 95 Bothwell Street, Glasgow, G2 7HX, UK
 Tel: 0141 204 2511 Fax: 0141 226 3109
 www.jacobstabtie.com

Client	Aberdeen Western Peripheral Route		
Project	Aberdeen Western Peripheral Route Environmental Statement, Part C - Southern Leg		
Title	Landscape and Ecological Mitigation Sheet 9 of 16		
Drawing Status	FINAL	Revisions	
JB No.	0010332	Date	July 2007
Figure No.	FIGURE 26.5i	Checked	MS
Scale	1:5,000 @ A3	Approved	SH
Drawn	AG	Checked	MS
		Approved	SH

This map is based on Ordnance Survey material with the permission of Ordnance Survey on behalf of the controller of Her Majesty's Stationery Office. Unauthorised reproduction infringes Crown copyright and may lead to prosecution or civil proceedings. Scottish Executive Licence Number, 100020540 (2007). Maps produced by Jacobs UK Ltd. This map should NOT be rescaled. Copyright reserved.

FIGURE 26.5j



Barriers to reduce noise impact on nearby properties.

Standard trees to integrate with existing hedgerow pattern, screen properties and provide ecological connectivity between woodland fragments and facilitate usage by bats and birds.

Scrub and feathered tree planting to screen the AWPR and integrate with existing landscape pattern.

Contlaw Road Overbridge

HILL OF MILTIMBER

LAGGAN COTTAGE

NETHER BEANSHILL

MILTIMBER JUNCTION

Milltimber Junction Overbridge

GOLF COURSE

Mixed woodland to replace lost woodland and provide screening for properties.

Drystone walls to tie in with existing walls and reflect landscape pattern.

Scrub woodland to screen the AWPR and junction and integrate with existing field boundary pattern.

Mixed woodland to screen junction, tie in with existing plantations and shelterbelts and integrate with bridge and junction structure.

Continued on Sheet 11 of 16 (Figure 26.5k)

Continued on Sheet 9 of 16 (Figure 26.5i)

LEGEND

- Proposed Route (Engineering Profile 04/05/07)
- Detention Basins & Treatment Ponds
 - Green - Detention Basin
 - Blue - Treatment Pond
- Existing Vegetation / Retained Vegetation
- Existing Watercourses & Water Bodies
- Existing Contours (5m Intervals)
- Drystone Wall
- Cross Section Locations
- BP / Shell Pipelines

Planting Mitigation Proposals

- Landscape Planting Proposals Only
- Ecological Planting Proposals Only
- Ecological & Landscape Planting
- Mixed Woodland Planting
- Coniferous Woodland Planting
- Broadleaved Woodland Planting
- Scrub Woodland Planting
- Riparian Woodland

Landscape Mitigation Proposals

- Species Rich Grassland
- Potential Rock Cut (sown with pockets of native seed)
- Potential to Return to Agriculture
- Feathered Tree Planting (Groups of 10 Min)
- Extra Heavy Standard Trees/Standard Trees
- Hedgerow
- Proposed Drystone Wall
- Proposed Noise Barrier

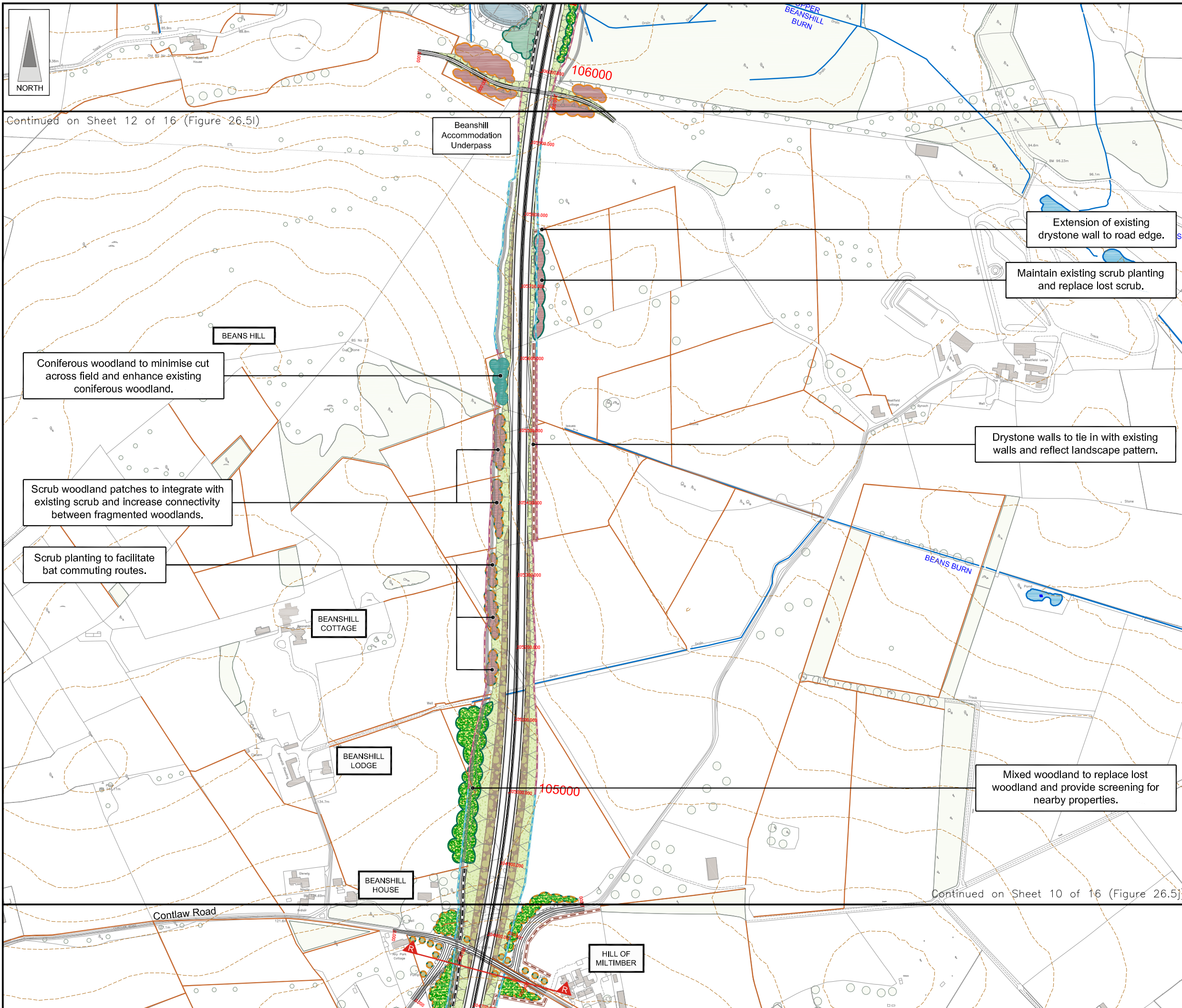
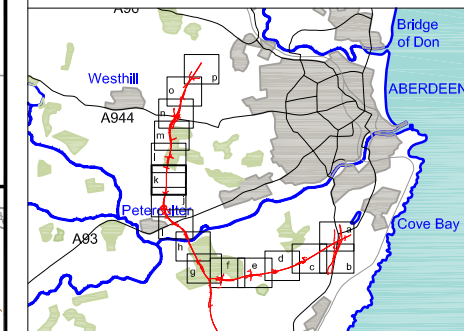
Ecological Mitigation Proposals

- Dry Mammal Underpass
- Wildlife Bridge
- Culvert / Bridge (see individual labels)
- Re-aligned Watercourse
- Otter Fence / Badger Fence
- Bat Box Provision
- Re-located Otter Holes

JE JACOBS
 95 Bothwell Street, Glasgow, G2 7HX, UK
 Tel: 0141 204 2511 Fax: 0141 226 3109
 www.jacobstablie.com

Client	Aberdeen Western Peripheral Route		
Project	Aberdeen Western Peripheral Route Environmental Statement, Part C - Southern Leg		
Title	Landscape and Ecological Mitigation Sheet 10 of 16		
Drawing Status	FINAL	Checked	MS
JB No.	0010332	Approved	SH
Figure No.	FIGURE 26.5j	Date	July 2007
Scale	1:5,000 @ A3	Checked	MS
Drawn	AG	Approved	SH

FIGURE 26.5k



LEGEND

- Proposed Route (Engineering Profile 04/05/07)
- Detention Basins & Treatment Ponds
Green - Detention Basin
Blue - Treatment Pond
- Existing Vegetation / Retained Vegetation
- Existing Watercourses & Water Bodies
- Existing Contours (5m Intervals)
- Drystone Wall
- Cross Section Locations
- BP / Shell Pipelines

Planting Mitigation Proposals

- Landscape Planting Proposals Only
- Ecological Planting Proposals Only
- Ecological & Landscape Planting
- Mixed Woodland Planting
- Coniferous Woodland Planting
- Broadleaved Woodland Planting
- Scrub Woodland Planting
- Riparian Woodland

Landscape Mitigation Proposals

- Species Rich Grassland
- Potential Rock Cut (sown with pockets of native seed)
- Potential to Return to Agriculture
- Feathered Tree Planting (Groups of 10 Min)
- Extra Heavy Standard Trees/Standard Trees
- Hedgerow
- Proposed Drystone Wall
- Proposed Noise Barrier

Ecological Mitigation Proposals

- Dry Mammal Underpass
- Wildlife Bridge
- Culvert / Bridge (see individual labels)
- Re-aligned Watercourse
- Otter Fence / Badger Fence
- Bat Box Provision
- Re-located Otter Holes

JE JACOBS
 95 Bothwell Street, Glasgow, G2 7HX, UK
 Tel: 0141 204 2511 Fax: 0141 226 3109
 www.jacobstabtie.com

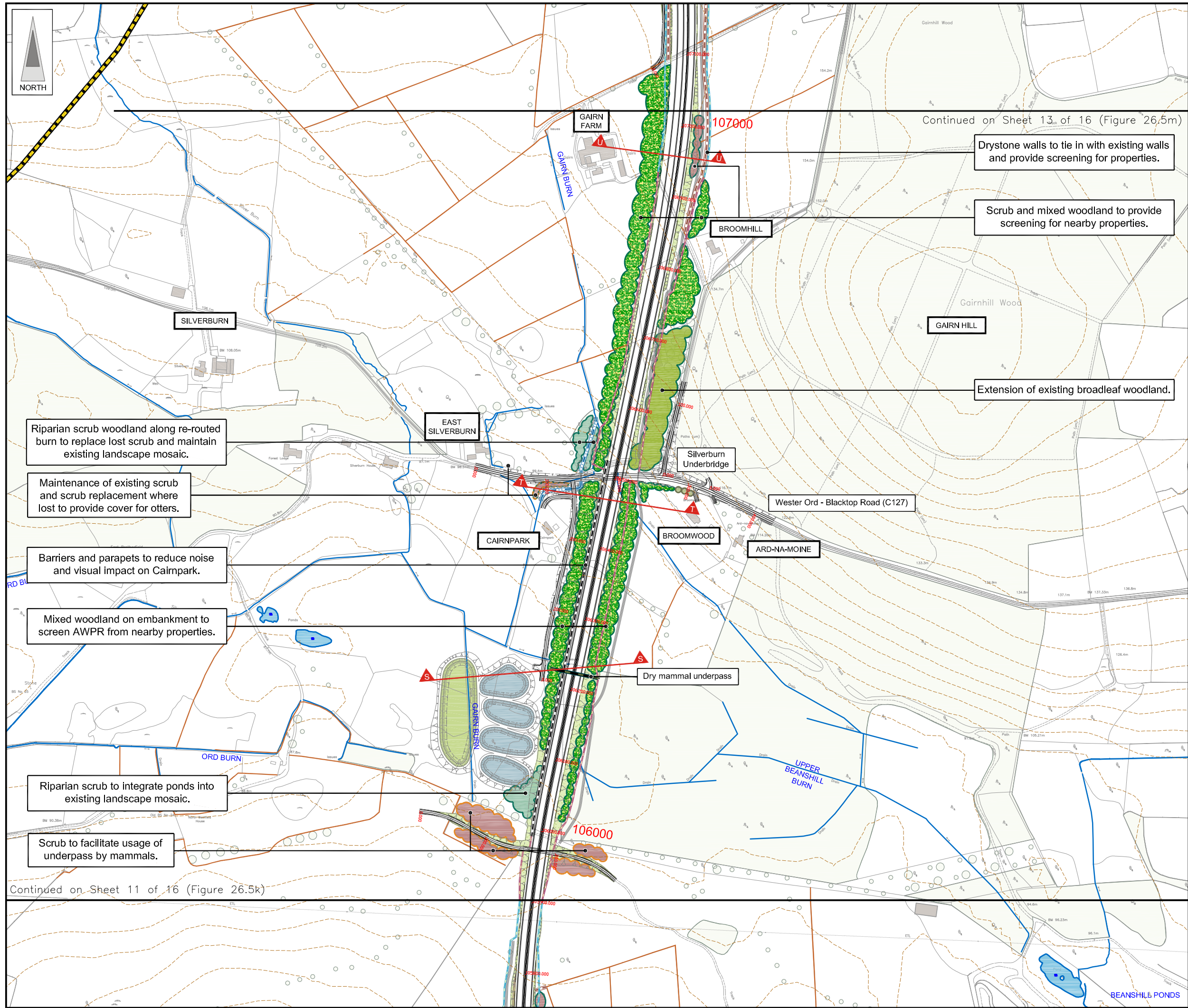
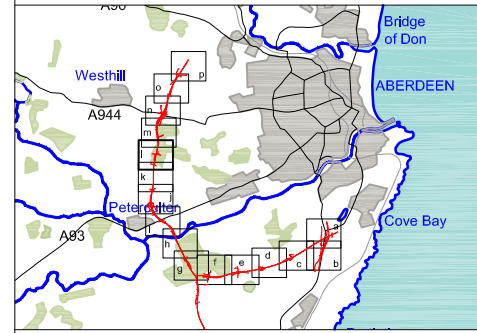
Client: **Aberdeen Western Peripheral Route**

Project: **Aberdeen Western Peripheral Route Environmental Statement, Part C - Southern Leg**

Title: **Landscape and Ecological Mitigation Sheet 11 of 16**

Drawing Status	FINAL	Revisions	
JB No.	0010332	Date	July 2007
Figure No.	FIGURE 26.5k	Checked	MS
Scale	1:5,000 @ A3	Approved	SH
Drawn	AG	Checked	MS
		Approved	SH

FIGURE 26.5I



Continued on Sheet 13. of 16 (Figure 26.5m)

Drystone walls to tie in with existing walls and provide screening for properties.

Scrub and mixed woodland to provide screening for nearby properties.

Extension of existing broadleaf woodland.

Riparian scrub woodland along re-routed burn to replace lost scrub and maintain existing landscape mosaic.

Maintenance of existing scrub and scrub replacement where lost to provide cover for otters.

Barriers and parapets to reduce noise and visual impact on Cairnpark.

Mixed woodland on embankment to screen AWPR from nearby properties.

Riparian scrub to integrate ponds into existing landscape mosaic.

Scrub to facilitate usage of underpass by mammals.

- LEGEND**
- Proposed Route (Engineering Profile 04/05/07)
 - Detention Basins & Treatment Ponds
 - Green - Detention Basin
 - Blue - Treatment Pond
 - Existing Vegetation / Retained Vegetation.
 - Existing Watercourses & Water Bodies
 - Existing Contours (5m intervals)
 - Drystone Wall
 - Cross Section Locations
 - BP / Shell Pipelines

- Planting Mitigation Proposals**
- Landscape Planting Proposals Only
 - Ecological Planting Proposals Only
 - Ecological & Landscape Planting
 - Mixed Woodland Planting
 - Coniferous Woodland Planting
 - Broadleaved Woodland Planting
 - Scrub Woodland Planting
 - Riparian Woodland

- Landscape Mitigation Proposals**
- Species Rich Grassland
 - Potential Rock Cut (sown with pockets of native seed)
 - Potential to Return to Agriculture
 - Feathered Tree Planting (Groups of 10 Min)
 - Extra Heavy Standard Trees/Standard Trees
 - Hedgerow
 - Proposed Drystone Wall
 - Proposed Noise Barrier

- Ecological Mitigation Proposals**
- Dry Mammal Underpass
 - Wildlife Bridge
 - Culvert / Bridge (see individual labels)
 - Re-aligned Watercourse
 - Otter Fence / Badger Fence
 - Bat Box Provision
 - Re-located Otter Holes

JE JACOBS
 95 Bothwell Street, Glasgow, G2 7HX, UK
 Tel: 0141 204 2511 Fax: 0141 226 3109
 www.jacobstabtie.com

Client: **Aberdeen Western Peripheral Route**

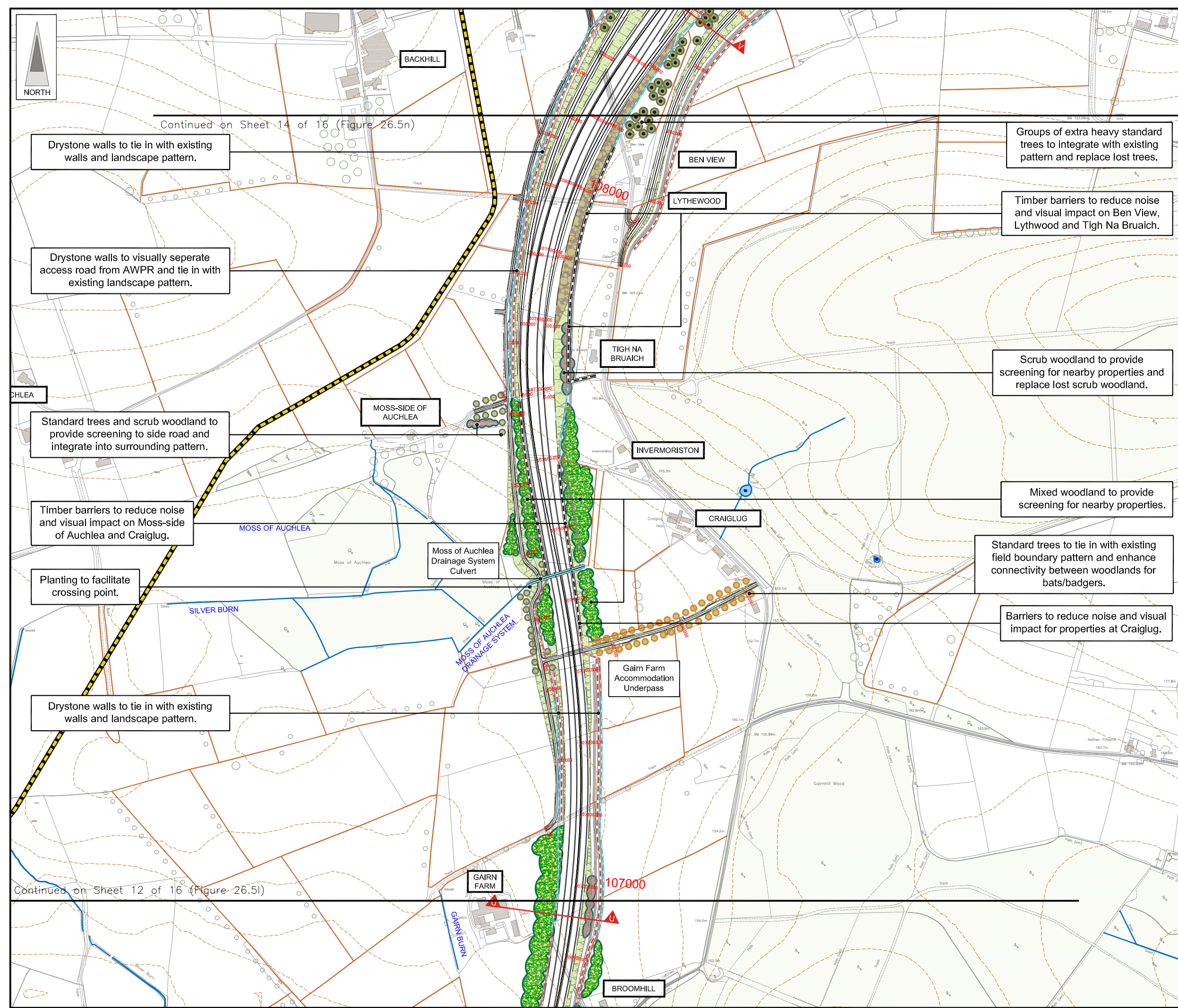
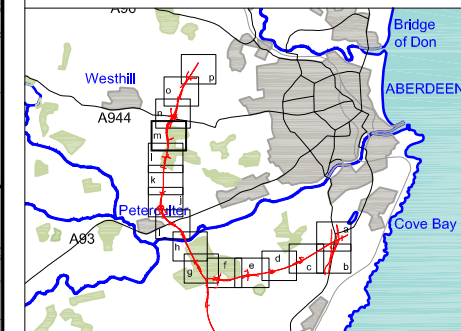
Project: **Aberdeen Western Peripheral Route Environmental Statement, Part C - Southern Leg**

Title: **Landscape and Ecological Mitigation Sheet 12 of 16**

Drawing Status	FINAL	Revisions	
JB No.	0010332	Date	July 2007
Figure No.	FIGURE 26.5I	Checked	MS
Scale	1:5,000 @ A3	Approved	SH
Drawn	AG	Checked	MS
		Approved	SH

This drawing is not to be used in whole or part other than for the intended purpose and project as defined on this drawing. Refer to the contract for full terms and conditions. Maps produced by Jacobs UK Ltd. This map should NOT be rescaled. Copyright reserved.

FIGURE 26.5m



Groups of extra heavy standard trees to integrate with existing pattern and replace lost trees.

Timber barriers to reduce noise and visual impact on Ben View, Lythwood and Tigh Na Bruaich.

Scrub woodland to provide screening for nearby properties and replace lost scrub woodland.

Mixed woodland to provide screening for nearby properties.

Standard trees to tie in with existing field boundary pattern and enhance connectivity between woodlands for bats/badgers.

Barriers to reduce noise and visual impact for properties at Craiglug.

Drystone walls to tie in with existing walls and landscape pattern.

Drystone walls to visually separate access road from AWPR and tie in with existing landscape pattern.

Standard trees and scrub woodland to provide screening to side road and integrate into surrounding pattern.

Timber barriers to reduce noise and visual impact on Moss-side of Auchlea and Craiglug.

Planting to facilitate crossing point.

Drystone walls to tie in with existing walls and landscape pattern.

LEGEND

- Proposed Route (Engineering Profile 04/05/07)
- Detention Basins & Treatment Ponds
 - Green - Detention Basin
 - Blue - Treatment Pond
- Existing Vegetation / Retained Vegetation
- Existing Watercourses & Water Bodies
- Existing Contours (5m Intervals)
- Drystone Wall
- Cross Section Locations
- BP / Shell Pipelines

Planting Mitigation Proposals

- Landscape Planting Proposals Only
- Ecological Planting Proposals Only
- Ecological & Landscape Planting
- Mixed Woodland Planting
- Coniferous Woodland Planting
- Broadleaved Woodland Planting
- Scrub Woodland Planting
- Riparian Woodland

Landscape Mitigation Proposals

- Species Rich Grassland
- Potential Rock Cut (sown with pockets of native seed)
- Potential to Return to Agriculture
- Feathered Tree Planting (Groups of 10 Min)
- Extra Heavy Standard Trees/Standard Trees
- Hedgerow
- Proposed Drystone Wall
- Proposed Noise Barrier

Ecological Mitigation Proposals

- Dry Mammal Underpass
- Wildlife Bridge
- Culvert / Bridge (see individual labels)
- Re-aligned Watercourse
- Otter Fence / Badger Fence
- Bat Box Provision
- Re-located Otter Holes

JE JACOBS
 95 Bothwell Street, Glasgow, G2 7HX, UK
 Tel: 0141 204 2511 Fax: 0141 226 3109
 www.jacobsbabtie.com

Client: Aberdeen Western Peripheral Route

Project: Aberdeen Western Peripheral Route Environmental Statement, Part C - Southern Leg

Title: Landscape and Ecological Mitigation Sheet 13 of 16

Drawing Status: FINAL
 JB No. 0010332
 Figure No. FIGURE 26.5m
 Scale: 1:5,000 @ A3
 Date: July 2007

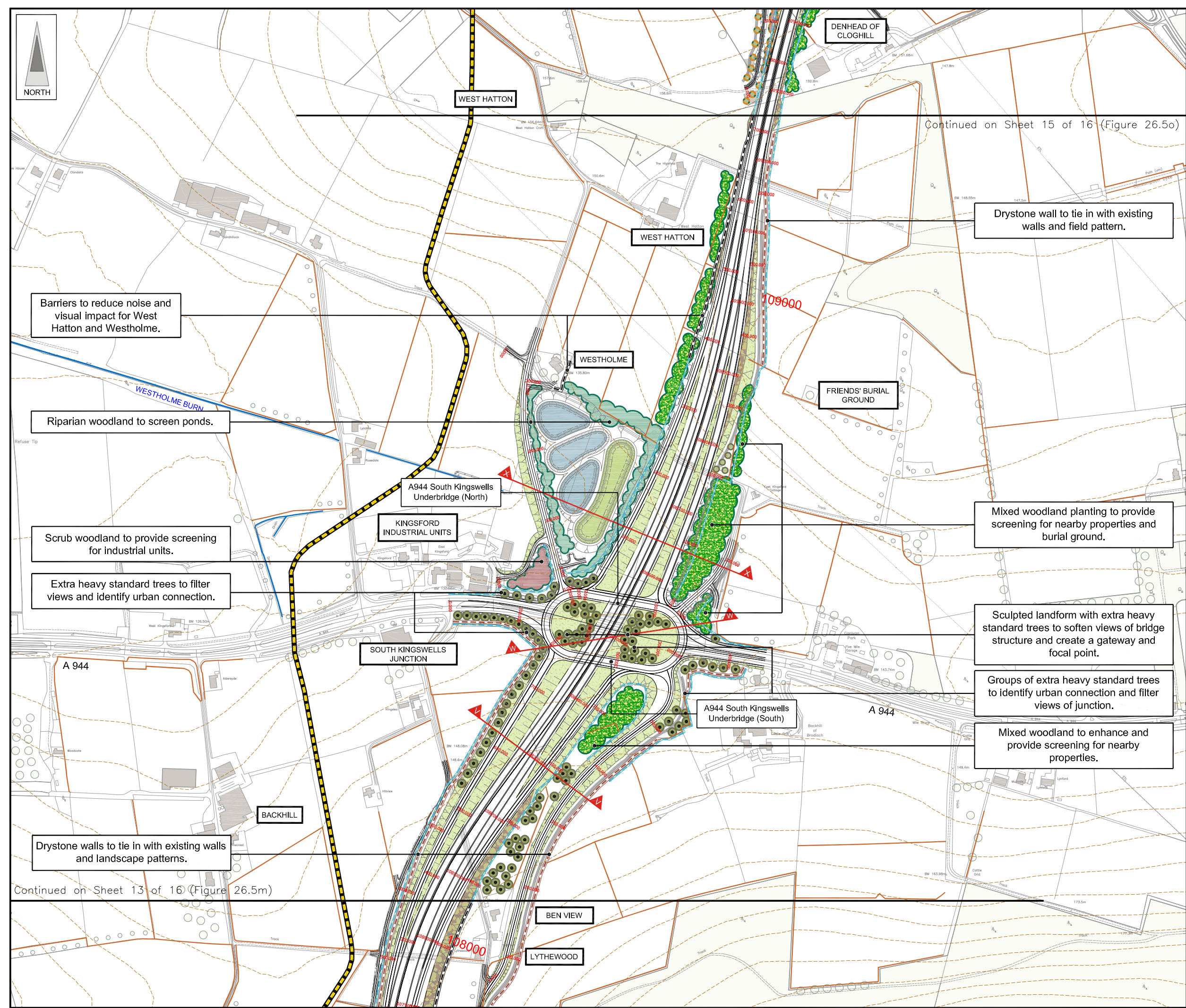
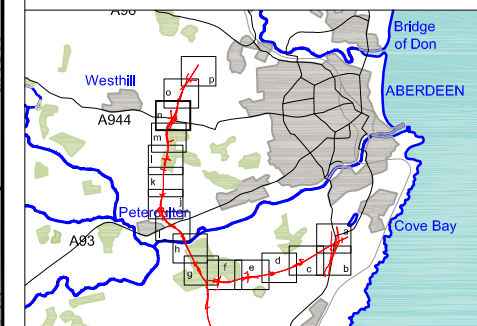
Drawn	AG	Checked	MS	Approved	SH
-------	----	---------	----	----------	----

Revisions

--	--	--	--

This map is based on Ordnance Survey material with the permission of Ordnance Survey on behalf of the controller of Her Majesty's Stationery Office. Crown copyright. Unauthorised reproduction infringes Crown copyright and may lead to prosecution or civil proceedings. Scottish Executive Licence Number, 100020540 (2007).

FIGURE 26.5n



Barriers to reduce noise and visual impact for West Hatton and Westholme.

Riparian woodland to screen ponds.

Scrub woodland to provide screening for industrial units.

Extra heavy standard trees to filter views and identify urban connection.

Drystone walls to tie in with existing walls and landscape patterns.

WEST HATTON

WEST HATTON

WESTHOLME

FRIENDS' BURIAL GROUND

A944 South Kingswells Underbridge (North)

KINGSFORD INDUSTRIAL UNITS

SOUTH KINGSWELLS JUNCTION

A944 South Kingswells Underbridge (South)

BACKHILL

BEN VIEW

LYTHEWOOD

Drystone wall to tie in with existing walls and field pattern.

Mixed woodland planting to provide screening for nearby properties and burial ground.

Sculpted landform with extra heavy standard trees to soften views of bridge structure and create a gateway and focal point.

Groups of extra heavy standard trees to identify urban connection and filter views of junction.

Mixed woodland to enhance and provide screening for nearby properties.

Continued on Sheet 15 of 16 (Figure 26.5o)

Continued on Sheet 13 of 16 (Figure 26.5m)

LEGEND

- Proposed Route (Engineering Profile 04/05/07)
- Detention Basins & Treatment Ponds
 - Green - Detention Basin
 - Blue - Treatment Pond
- Existing Vegetation / Retained Vegetation
- Existing Watercourses & Water Bodies
- Existing Contours (5m Intervals)
- Drystone Wall
- Cross Section Locations
- BP / Shell Pipelines

Planting Mitigation Proposals

- Landscape Planting Proposals Only
- Ecological Planting Proposals Only
- Ecological & Landscape Planting
- Mixed Woodland Planting
- Coniferous Woodland Planting
- Broadleaved Woodland Planting
- Scrub Woodland Planting
- Riparian Woodland

Landscape Mitigation Proposals

- Species Rich Grassland
- Potential Rock Cut (sown with pockets of native seed)
- Potential to Return to Agriculture
- Feathered Tree Planting (Groups of 10 Min)
- Extra Heavy Standard Trees/Standard Trees
- Hedgerow
- Proposed Drystone Wall
- Proposed Noise Barrier

Ecological Mitigation Proposals

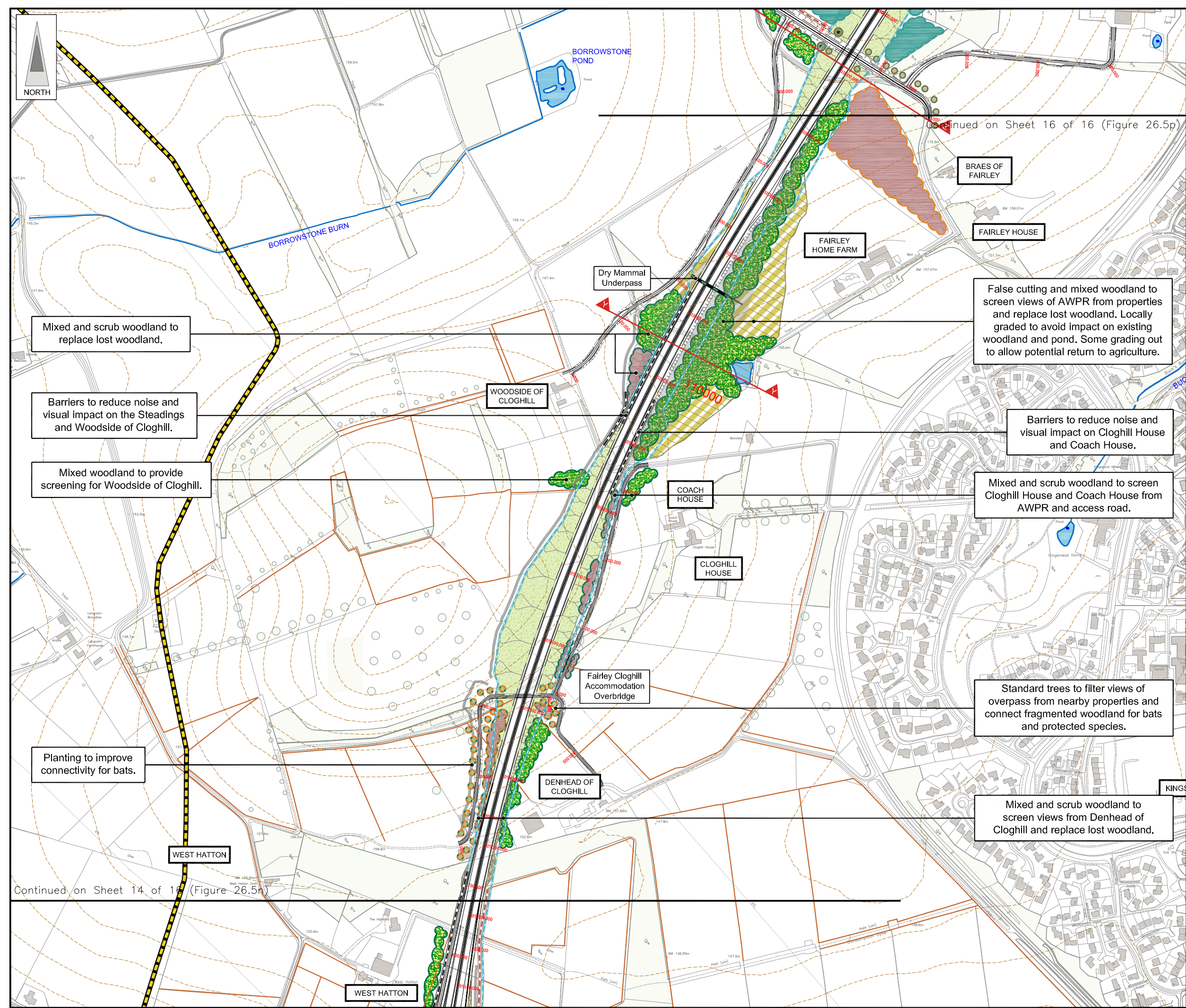
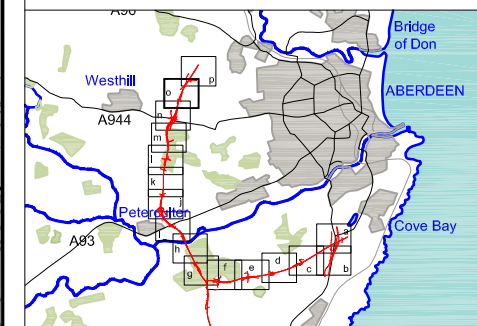
- Dry Mammal Underpass
- Wildlife Bridge
- Culvert / Bridge (see individual labels)
- Re-aligned Watercourse
- Otter Fence / Badger Fence
- Bat Box Provision
- Re-located Otter Holes

JE JACOBS
 95 Bothwell Street, Glasgow, G2 7HX, UK
 Tel: 0141 204 2511 Fax: 0141 226 3109
 www.jacobstablie.com

Client	Aberdeen Western Peripheral Route		
Project	Aberdeen Western Peripheral Route Environmental Statement, Part C - Southern Leg		
Title	Landscape and Ecological Mitigation Sheet 14 of 16		
Drawing Status	FINAL	Revisions	
JB No.	0010332	Checked	MS
Figure No.	FIGURE 26.5n	Date	July 2007
Scale	1:5,000 @ A3	Approved	SH
Drawn	AG	Checked	MS

This map is based on Ordnance Survey material with the permission of Ordnance Survey on behalf of the controller of Her Majesty's Stationary Office. Unauthorised reproduction infringes Crown copyright and may lead to prosecution or civil proceedings. Scottish Executive Licence Number, 100020540 (2007).

FIGURE 26.5o



Mixed and scrub woodland to replace lost woodland.

Barriers to reduce noise and visual impact on the Steadings and Woodside of Cloghill.

Mixed woodland to provide screening for Woodside of Cloghill.

Planting to improve connectivity for bats.

Dry Mammal Underpass

WOODSIDE OF CLOGHILL

COACH HOUSE

CLOGHILL HOUSE

DENHEAD OF CLOGHILL

WEST HATTON

WEST HATTON

BRAES OF FAIRLEY

FAIRLEY HOME FARM

FAIRLEY HOUSE

Barriers to reduce noise and visual impact on Cloghill House and Coach House.

Mixed and scrub woodland to screen Cloghill House and Coach House from AWPR and access road.

Standard trees to filter views of overpass from nearby properties and connect fragmented woodland for bats and protected species.

Mixed and scrub woodland to screen views from Denhead of Cloghill and replace lost woodland.

False cutting and mixed woodland to screen views of AWPR from properties and replace lost woodland. Locally graded to avoid impact on existing woodland and pond. Some grading out to allow potential return to agriculture.

LEGEND

- Proposed Route (Engineering Profile 04/05/07)
- Detention Basins & Treatment Ponds
Green - Detention Basin
Blue - Treatment Pond
- Existing Vegetation / Retained Vegetation
- Existing Watercourses & Water Bodies
- Existing Contours (5m intervals)
- Drystone Wall
- Cross Section Locations
- BP / Shell Pipelines

Planting Mitigation Proposals

- Landscape Planting Proposals Only
- Ecological Planting Proposals Only
- Ecological & Landscape Planting
- Mixed Woodland Planting
- Coniferous Woodland Planting
- Broadleaved Woodland Planting
- Scrub Woodland Planting
- Riparian Woodland

Landscape Mitigation Proposals

- Species Rich Grassland
- Potential Rock Cut (sown with pockets of native seed)
- Potential to Return to Agriculture
- Feathered Tree Planting (Groups of 10 Min)
- Extra Heavy Standard Trees/Standard Trees
- Hedgerow
- Proposed Drystone Wall
- Proposed Noise Barrier

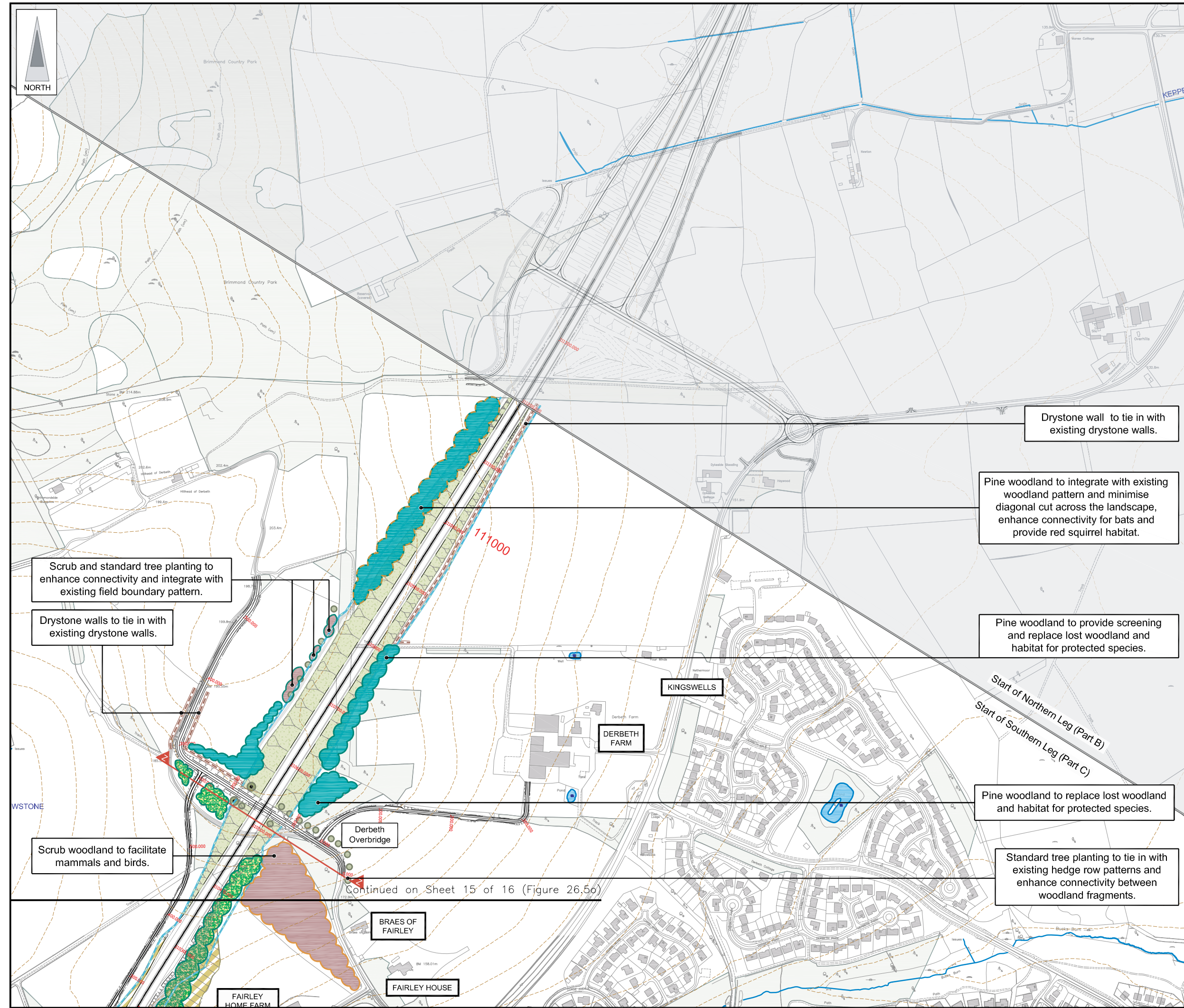
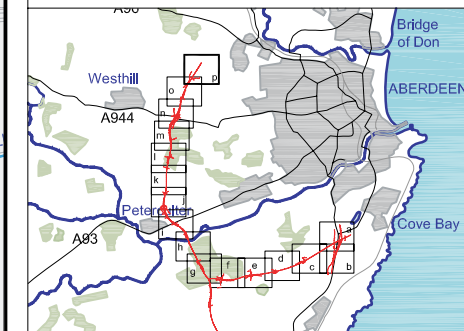
Ecological Mitigation Proposals

- Dry Mammal Underpass
- Wildlife Bridge
- Culvert / Bridge (see individual labels)
- Re-aligned Watercourse
- Otter Fence / Badger Fence
- Bat Box Provision
- Re-located Otter Holes

JE JACOBS
 95 Bothwell Street, Glasgow, G2 7HX, UK
 Tel: 0141 204 2511 Fax: 0141 226 3109
 www.jacobsbattle.com

Client	Aberdeen Western Peripheral Route		
Project	Aberdeen Western Peripheral Route Environmental Statement, Part C - Southern Leg		
Title	Landscape and Ecological Mitigation Sheet 15 of 16		
Drawing Status	FINAL		
JB No.	0010332		
Figure No.	FIGURE 26.5o	Revisions	
Scale	1:5,000 @ A3	Date	July 2007
Drawn	AG	Checked	MS
		Approved	SH

FIGURE 26.5p



LEGEND

- Proposed Route (Engineering Profile 04/05/07)
- Detention Basins & Treatment Ponds
Green - Detention Basin
Blue - Treatment Pond
- Existing Vegetation / Retained Vegetation
- Existing Watercourses & Water Bodies
- Existing Contours (5m intervals)
- Drystone Wall
- Cross Section Locations
- BP / Shell Pipelines

Planting Mitigation Proposals

- Landscape Planting Proposals Only
- Ecological Planting Proposals Only
- Ecological & Landscape Planting
- Mixed Woodland Planting
- Coniferous Woodland Planting
- Broadleaved Woodland Planting
- Scrub Woodland Planting
- Riparian Woodland

Landscape Mitigation Proposals

- Species Rich Grassland
- Potential Rock Cut (sown with pockets of native seed)
- Potential to Return to Agriculture
- Feathered Tree Planting (Groups of 10 Min)
- Extra Heavy Standard Trees/Standard Trees
- Hedgerow
- Proposed Drystone Wall
- Proposed Noise Barrier

Ecological Mitigation Proposals

- Dry Mammal Underpass
- Wildlife Bridge
- Culvert / Bridge (see individual labels)
- Re-aligned Watercourse
- Otter Fence / Badger Fence
- Bat Box Provision
- Re-located Otter Holts

Scrub and standard tree planting to enhance connectivity and integrate with existing field boundary pattern.

Drystone walls to tie in with existing drystone walls.

Scrub woodland to facilitate mammals and birds.

Drystone wall to tie in with existing drystone walls.

Pine woodland to integrate with existing woodland pattern and minimise diagonal cut across the landscape, enhance connectivity for bats and provide red squirrel habitat.

Pine woodland to provide screening and replace lost woodland and habitat for protected species.

Pine woodland to replace lost woodland and habitat for protected species.

Standard tree planting to tie in with existing hedge row patterns and enhance connectivity between woodland fragments.

Continued on Sheet 15 of 16 (Figure 26.5o)

JE JACOBS
 95 Bothwell Street, Glasgow, G2 7HX, UK
 Tel: 0141 204 2511 Fax: 0141 226 3109
 www.jacobstabtie.com

Client	Aberdeen Western Peripheral Route		
Project	Aberdeen Western Peripheral Route Environmental Statement, Part C - Southern Leg		
Title	Landscape and Ecological Mitigation Sheet 16 of 16		
Drawing Status	FINAL	Checked	MS
JB No.	0010332	Approved	SH
Figure No.	FIGURE 26.5p	Date	July 2007
Scale	1:5,000 @ A3	Checked	MS
Drawn	AG	Approved	SH