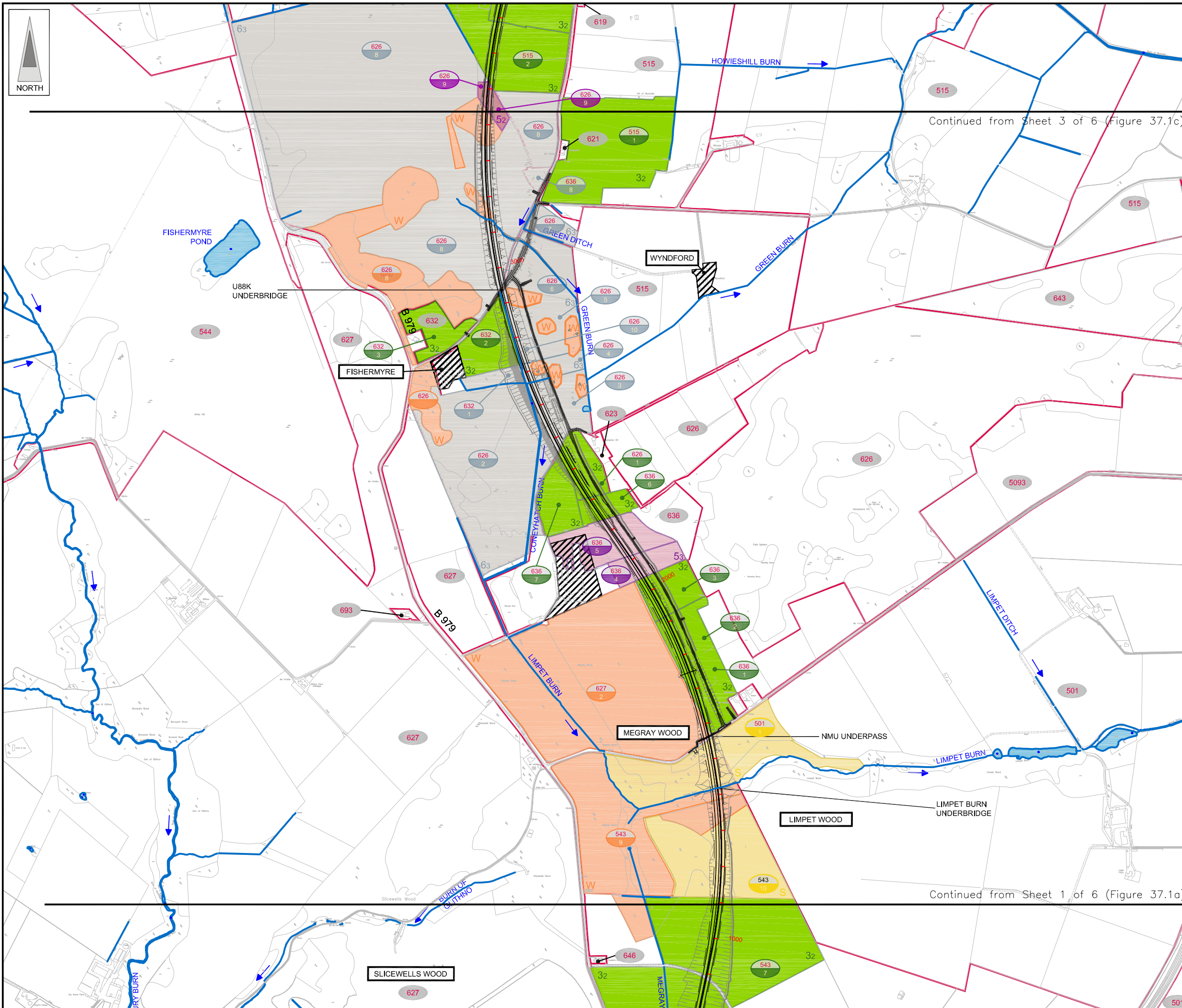
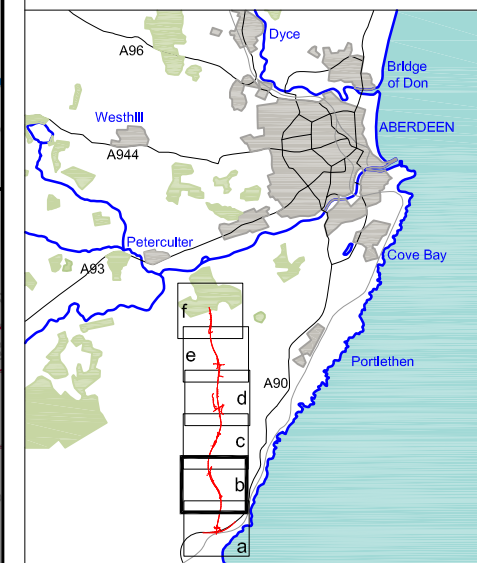


FIGURE 37.1b



Continued from Sheet 3 of 6 (Figure 37.1c)

Continued from Sheet 1 of 6 (Figure 37.1a)

LEGEND

- Proposed Route (Engineering Profile 04/05/07)
- Water Features
- Land Ownership Areas & Corresponding Holding Number
- Farm Steading

Fields Affected by the Proposed Route
Holding Number (number in red)
& Land Capability for Agriculture Classification (1 - 6a)

- 626 01 1
- 626 01 2
- 626 01 3
- 626 01 3a
- 626 01 4
- 626 01 4a
- 626 01 5
- 626 01 5a
- 626 01 5b
- 626 01 6
- 626 01 6a
- 626 01 6b
- 626 01 6c

Subclass Symbols

- Golf Course
- Woodland
- Scrub

Rev	Date	Purpose of Revision	Drwn	Chkd	Appd

JE JACOBS
95 Bothwell Street, Glasgow, G2 7HX, UK
Tel: 0141 204 2511 Fax: 0141 226 3109
www.jacobsabtie.com

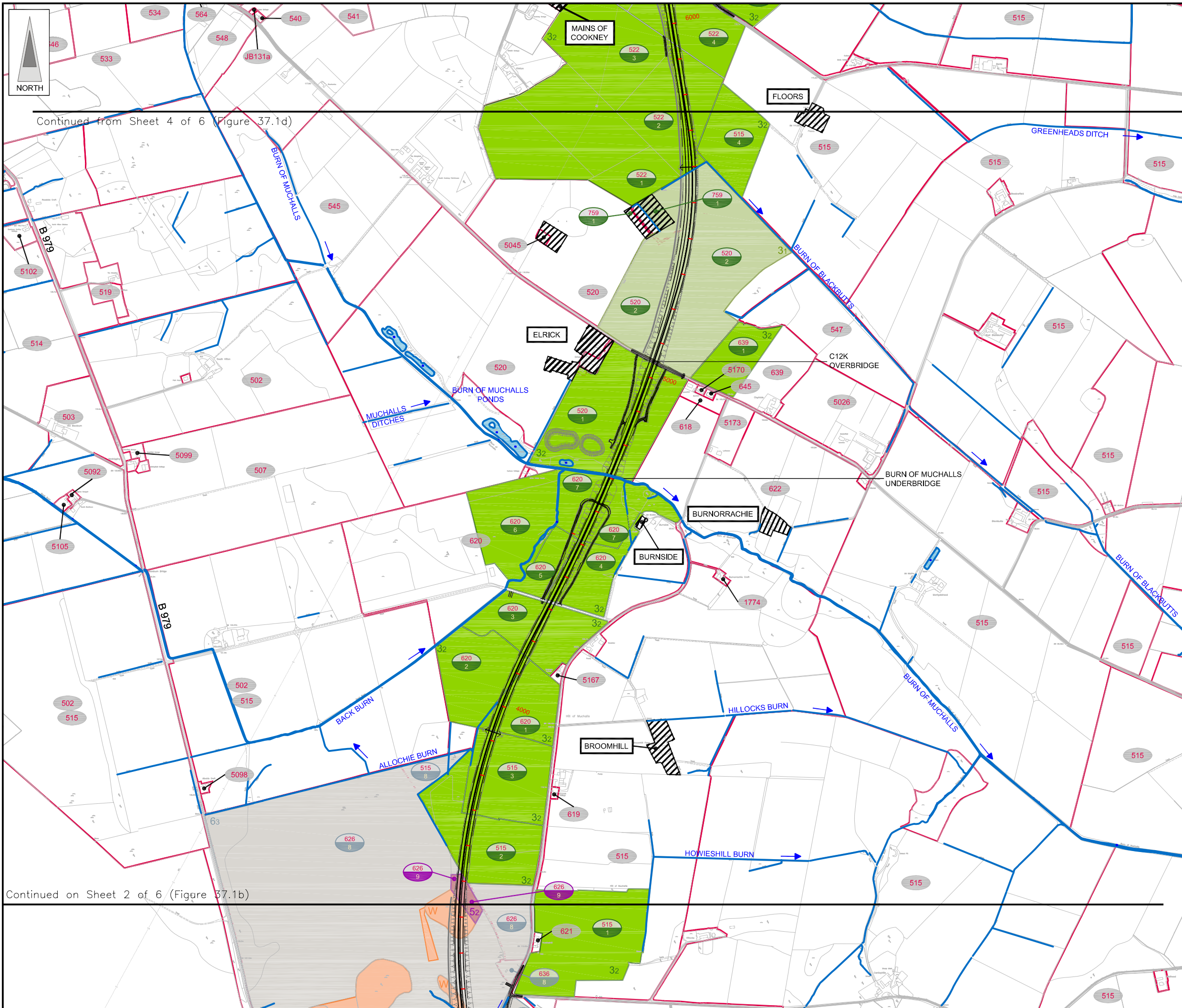
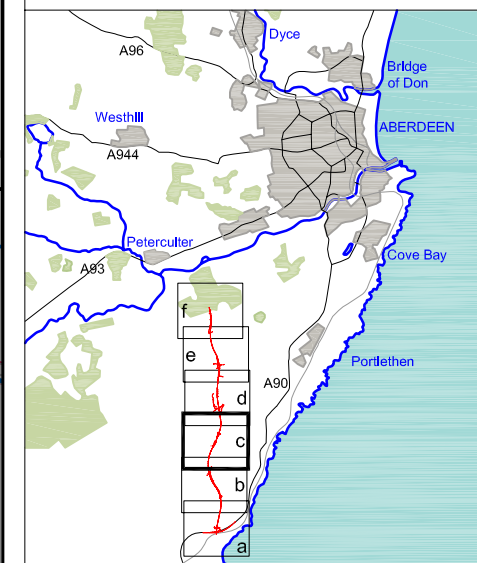
Client: **Aberdeen Western Peripheral Route**

Project: **Aberdeen Western Peripheral Route Environmental Statement, Part D - Fastlink**

Title: **Agricultural Land Use Sheet 2 of 6**

Drawing Status: FINAL	Revisions
JB No. 0010332	Date July 2007
Figure No. FIGURE 37.1b	Checked SH
Scale 1:10,000	Approved SH
Drawn KL	Checked GK

FIGURE 37.1c



LEGEND

- Proposed Route (Engineering Profile 04/05/07)
- Water Features
- Land Ownership Areas & Corresponding Holding Number
- Farm Steading

Fields Affected by the Proposed Route
Holding Number (number in red)
& Land Capability for Agriculture Classification (1 - 6a)

- 515 1
- 515 2
- 515 3
- 515 4
- 515 4a
- 515 5
- 515 5a
- 515 5b
- 515 6
- 515 6a
- 515 6b
- 515 6c

Subclass Symbols

- Golf Course
- Woodland
- Scrub

Rev	Date	Purpose of Revision	Drwn	Chkd	Appd

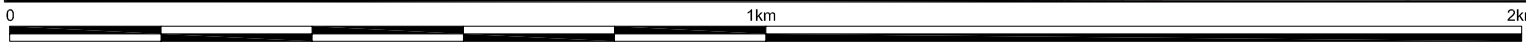
JE JACOBS
 95 Bothwell Street, Glasgow, G2 7HX, UK
 Tel: 0141 204 2511 Fax: 0141 226 3109
 www.jacobstabtie.com

Client: Aberdeen Western Peripheral Route

Project: Aberdeen Western Peripheral Route
 Environmental Statement, Part D - Fastlink

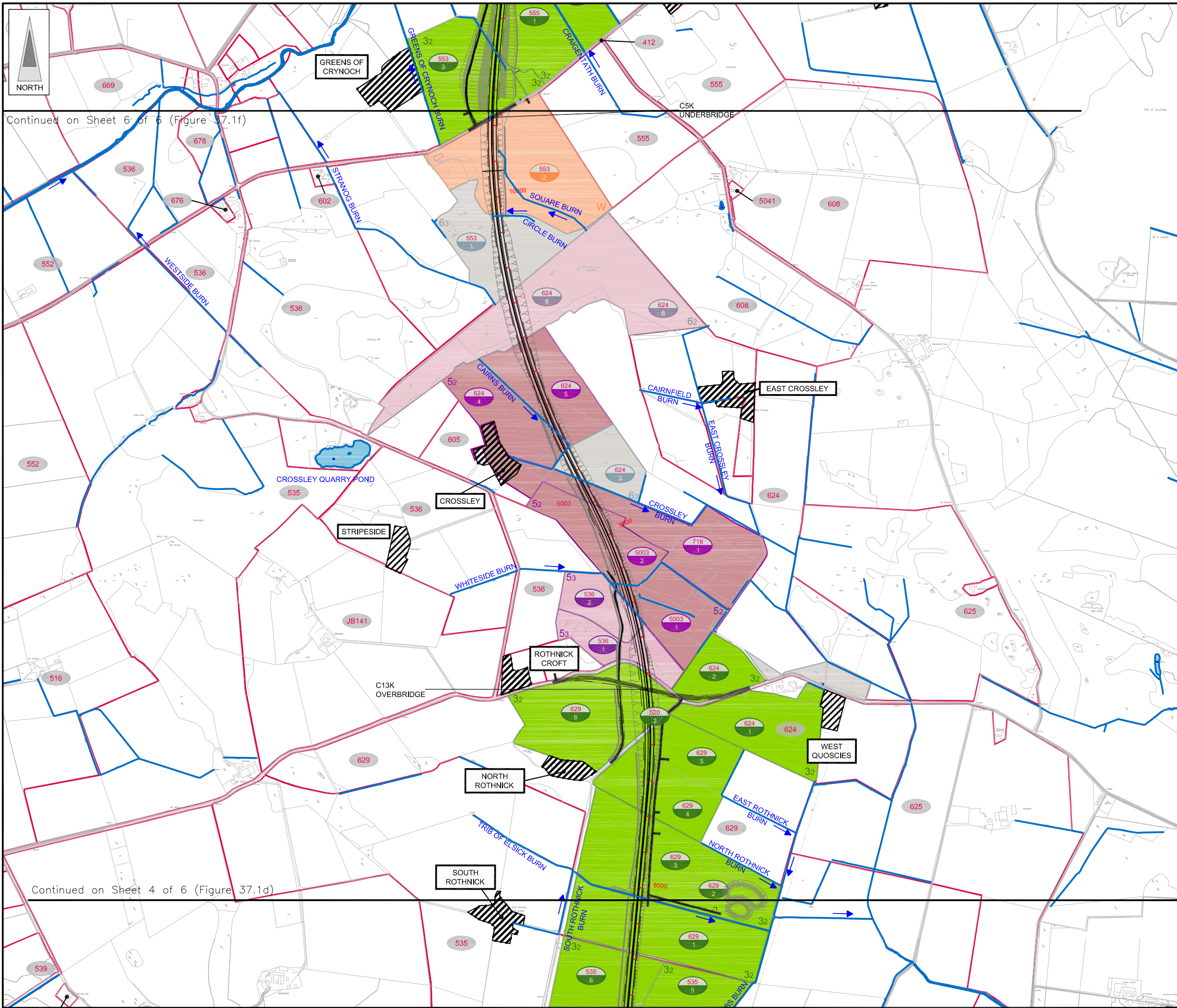
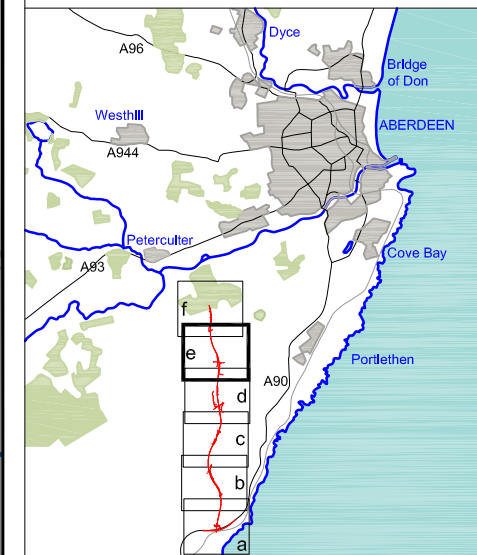
Title: Agricultural Land Use
 Sheet 3 of 6

Drawing Status	FINAL	Revisions	
JB No.	0010332	Date	July 2007
Figure No.	FIGURE 37.1c	Checked	SH
Scale	1:10,000	Approved	SH
Drawn	KL	Checked	GK



This map is based on Ordnance Survey material with the permission of Ordnance Survey on behalf of the controller of Her Majesty's Stationary Office. Unauthorised reproduction infringes Crown copyright and may lead to prosecution or civil proceedings. Scottish Executive Licence Number, 100020540 (2007).
 This drawing is not to be used in whole or part other than for the intended purpose and project as defined on this drawing. Refer to the contract for full terms and conditions. Maps produced by Jacobs UK Ltd. This map should NOT be rescaled. Copyright reserved.

FIGURE 37.1e



- LEGEND**
- Proposed Route (Engineering Profile 04/05/07)
 - Water Features
 - Land Ownership Areas & Corresponding Holding Number
 - Farm Steading

- Fields Affected by the Proposed Route**
Holding Number (number in red)
& Land Capability for Agriculture Classification (1 - 6a)
- 42 01 1
 - 42 01 2
 - 42 01 3
 - 42 01 3a
 - 42 01 4
 - 42 01 4a
 - 42 01 5
 - 42 01 5a
 - 42 01 5b
 - 42 01 6
 - 42 01 6a
- Subclass Symbols**
- 42 01 6a Golf Course
 - 42 01 6b Woodland
 - 42 01 6c Scrub

Rev	Date	Purpose of Revision	Drwn	Chkd	Appd

JE JACOBS
95 Bothwell Street, Glasgow, G2 7HX, UK
Tel: 0141 204 2511 Fax: 0141 226 3109
www.jacobsbattle.com

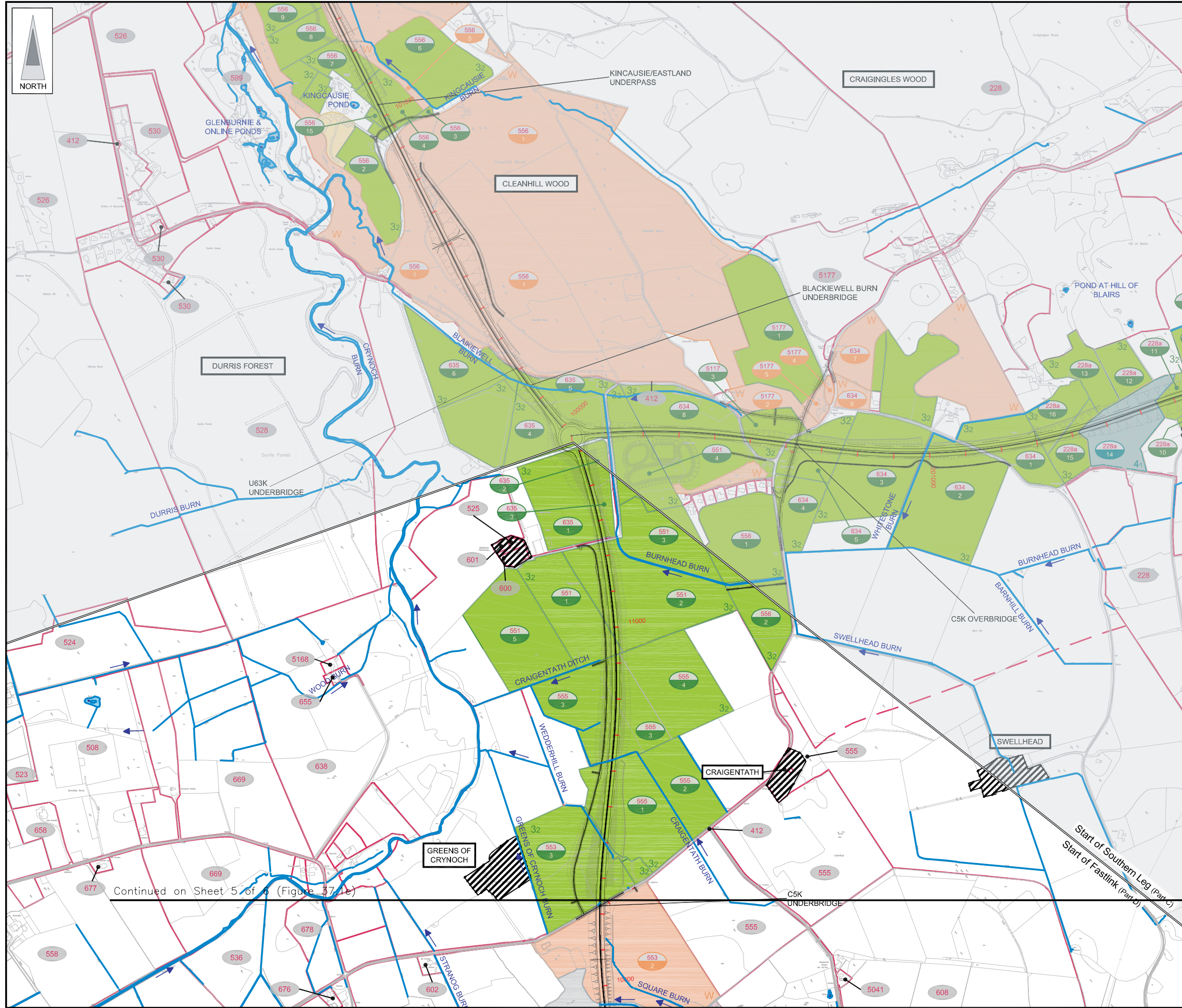
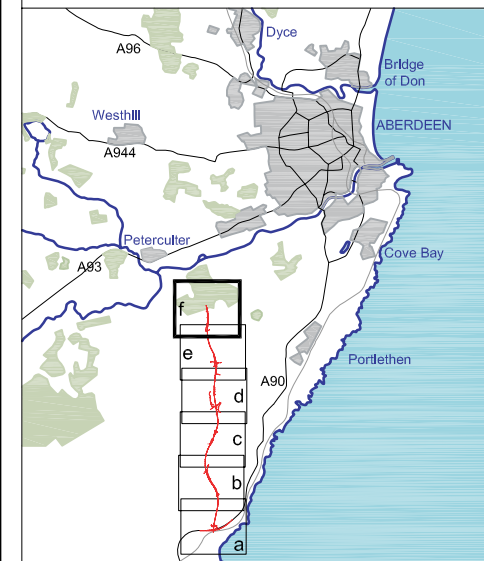
Client: **Aberdeen Western Peripheral Route**

Project: **Aberdeen Western Peripheral Route Environmental Statement, Part D - Fastlink**

Title: **Agricultural Land Use Sheet 5 of 6**

Drawing Status: FINAL	Revisions:
JB No. 0010332	Date: July 2007
Figure No. FIGURE 37.1e	Checked: SH
Scale: 1:10,000	Approved: SH
Drawn: KL	Checked: GK

FIGURE 37.1f



LEGEND

- Proposed Route**
(Engineering Profile 04/05/07)
 - Water Features**
 - Land Ownership Areas & Corresponding Holding Number**
 - Farm Steading**
- Fields Affected by the Proposed Route**
Holding Number (number in red)
& Land Capability for Agriculture Classification (1 - 6a)
- 412 01
 - 412 02
 - 412 03
 - 412 04
 - 412 05
 - 412 06
 - 412 07
 - 412 08
 - 412 09
 - 412 10
 - 412 11
 - 412 12
 - 412 13
 - 412 14
 - 412 15
 - 412 16
 - 412 17
 - 412 18
 - 412 19
 - 412 20
 - 412 21
 - 412 22
 - 412 23
 - 412 24
 - 412 25
 - 412 26
 - 412 27
 - 412 28
 - 412 29
 - 412 30
 - 412 31
 - 412 32
 - 412 33
 - 412 34
 - 412 35
 - 412 36
 - 412 37
 - 412 38
 - 412 39
 - 412 40
 - 412 41
 - 412 42
 - 412 43
 - 412 44
 - 412 45
 - 412 46
 - 412 47
 - 412 48
 - 412 49
 - 412 50
 - 412 51
 - 412 52
 - 412 53
 - 412 54
 - 412 55
 - 412 56
 - 412 57
 - 412 58
 - 412 59
 - 412 60
 - 412 61
 - 412 62
 - 412 63
 - 412 64
 - 412 65
 - 412 66
 - 412 67
 - 412 68
 - 412 69
 - 412 70
 - 412 71
 - 412 72
 - 412 73
 - 412 74
 - 412 75
 - 412 76
 - 412 77
 - 412 78
 - 412 79
 - 412 80
 - 412 81
 - 412 82
 - 412 83
 - 412 84
 - 412 85
 - 412 86
 - 412 87
 - 412 88
 - 412 89
 - 412 90
 - 412 91
 - 412 92
 - 412 93
 - 412 94
 - 412 95
 - 412 96
 - 412 97
 - 412 98
 - 412 99
 - 412 100
- Subclass Symbols**
- Golf Course**
 - Woodland**
 - Scrub**

Rev	Date	Purpose of Revision	Drwn	Chkd	Appd

JE JACOBS
 95 Bothwell Street, Glasgow, G2 7HX, UK
 Tel: 0141 204 2511 Fax: 0141 226 3109
 www.jacobsabtie.com

Client: **Aberdeen Western Peripheral Route**

Project: **Aberdeen Western Peripheral Route
Environmental Statement, Part D - Fastlink**

Title: **Agricultural Land Use
Sheet 6 of 6**

Drawing Status	FINAL	Revisions	
JB No.	0010332	Date	July 2007
Figure No.	FIGURE 37.1f	Checked	
Scale	1:10,000	Approved	SH
Drawn	KL	Checked	GK

This drawing is not to be used in whole or part other than for the intended purpose and project as defined on this drawing. Refer to the contract for full terms and conditions. Maps produced by Jacobs UK Ltd. This map should NOT be rescaled. Copyright reserved.

This map is based on Ordnance Survey material with the permission of Ordnance Survey on behalf of the controller of Her Majesty's Stationery Office. Crown copyright. Unauthorised reproduction infringes Crown copyright and may lead to prosecution or civil proceedings. Scottish Executive Licence Number, 100020540 (2007).