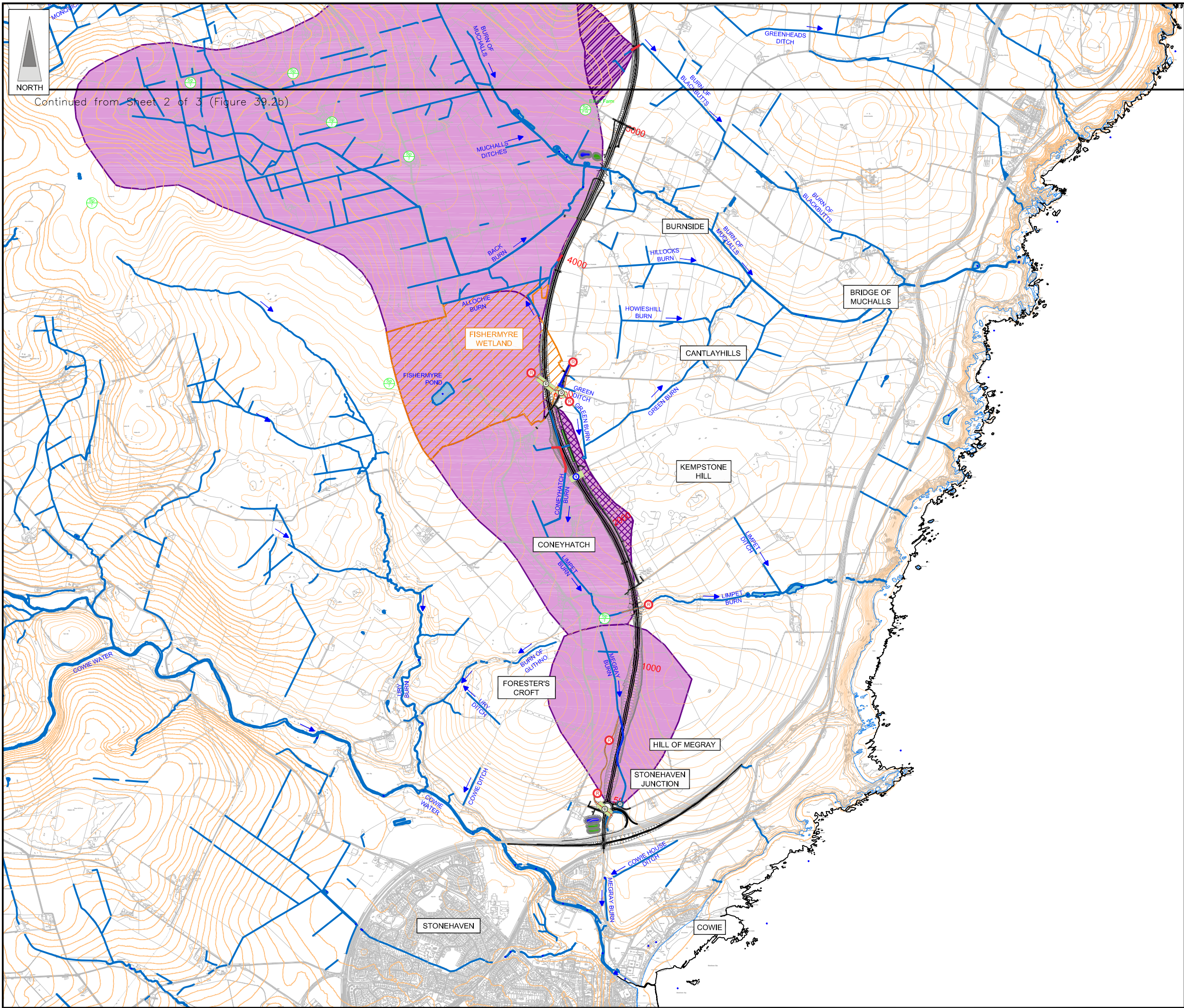
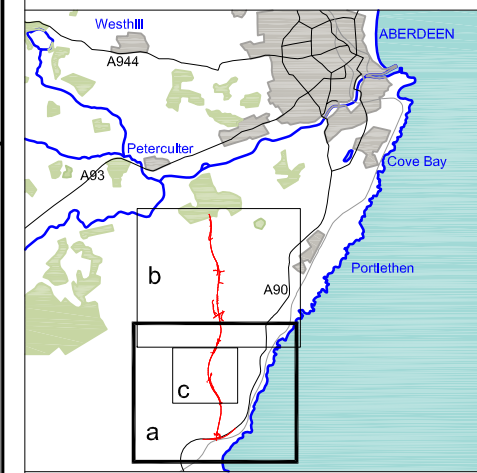


FIGURE 39.2a



LEGEND

- Proposed Route (Engineering Profile 04/05/07)
- Watercourses
- Direction of Flow
- Waterbody
- Hydrological Feature Indicative Boundary
- Natural Catchment Boundary
- Dissected Catchment Boundary
- Dissected Catchment Boundary outfalling to New Catchment
- Spring Location
- Private Groundwater Well Supply
- Depressed Invert Culvert
- Extension to Existing Culvert
- Network Culvert
- Stream Re-Alignment
- Watercourse taken into pre-earthworks
- Watercourse lost to stream re-alignment
- Watercourse lost through Catchment Severance/filled in
- Bridge
- SEPA Flow Gauges
- SEPA Spot Gauging Location
- JACOBS Spot Gauging Location
- SEPA Rain Gauge (Daily Recording and Tipping Bucket)

Drainage Treatment

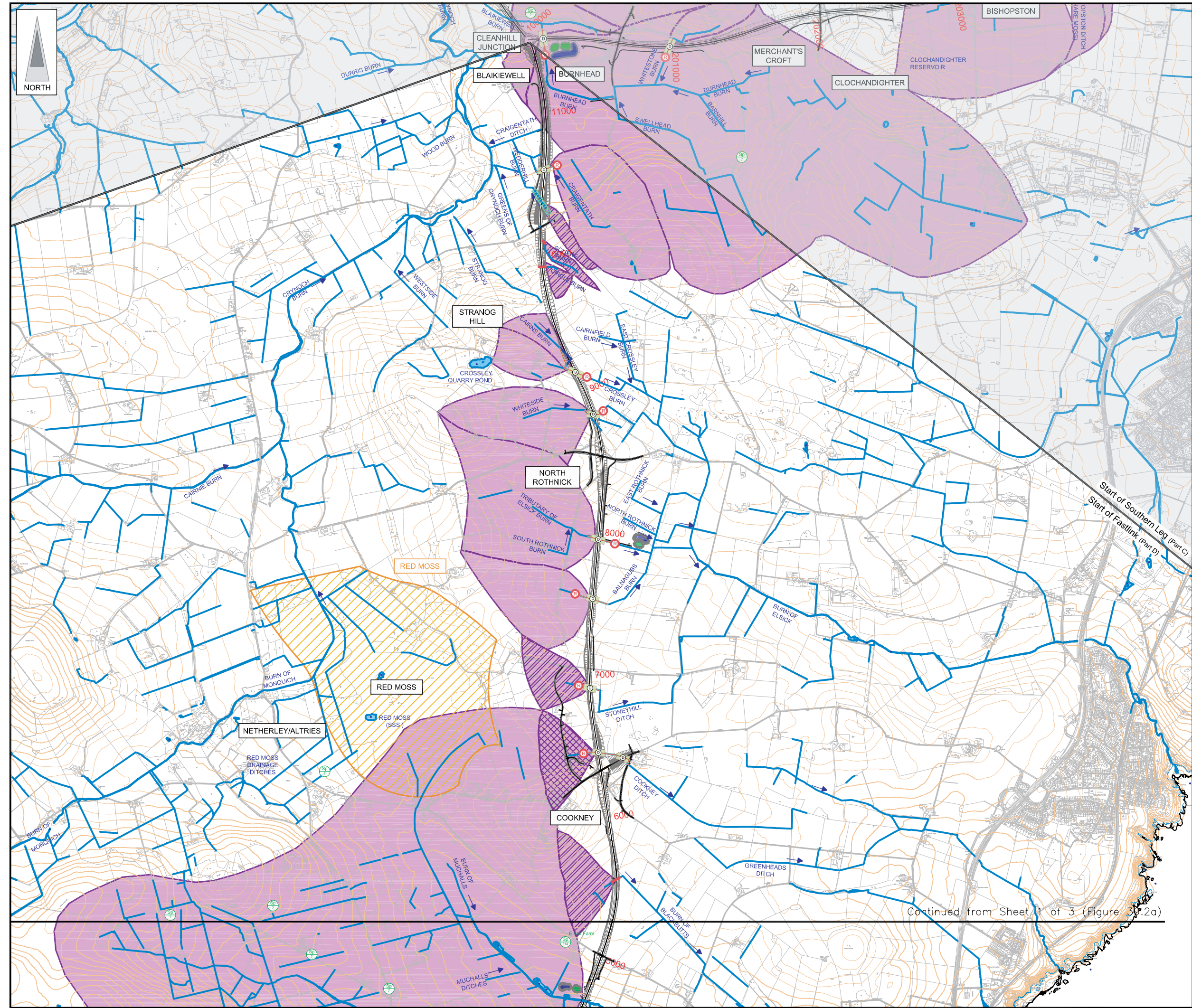
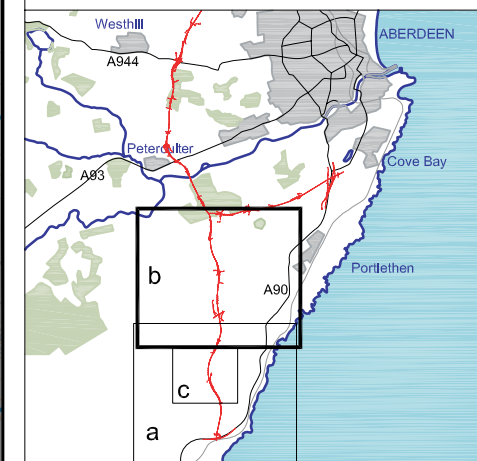
- Detention Basin
- Treatment Pond
- Swale

JE JACOBS
 95 Bothwell Street, Glasgow, G2 7HX, UK
 Tel: 0141 204 2511 Fax: 0141 226 3109
 www.jacobstablie.com

Client	Aberdeen Western Peripheral Route		
Project	Aberdeen Western Peripheral Route Environmental Statement, Part D - Fastlink		
Title	Surface Water Hydrology Sheet 1 of 3		

Drawing Status	FINAL	Revisions	
JB No.	0010332	Date	July 2007
Figure No.	FIGURE 39.2a	Checked	LB
Scale	1:25,000	Approved	SH
Drawn	MY	Checked	LB
Approved		Checked	SH

FIGURE 39.2b



- LEGEND**
- Proposed Route (Engineering Profile 04/05/07)
 - Watercourses
 - Direction of Flow
 - Waterbody
 - Hydrological Feature Indicative Boundary
 - Natural Catchment Boundary
 - Dissected Catchment Boundary
 - Dissected Catchment Boundary outfalling to New Catchment
 - Spring Location
 - Private Groundwater Well Supply
 - Depressed Invert Culvert
 - Extension to Existing Culvert
 - Network Culvert
 - Stream Re-Alignment
 - Watercourse taken into pre-earthworks
 - Watercourse lost to stream re-alignment
 - Watercourse lost through Catchment Severance/filled in
 - Bridge
 - SEPA Flow Gauges
 - SEPA Spot Gauging Location
 - JACOBS Spot Gauging Location
 - SEPA Rain Gauge (Daily Recording and Tipping Bucket)
- Drainage Treatment**
- Detention Basin
 - Treatment Pond
 - Swale

JE JACOBS
 95 Bothwell Street, Glasgow, G2 7HX, UK
 Tel: 0141 204 2511 Fax: 0141 226 3109
 www.jacobstable.com

Client: Aberdeen Western Peripheral Route

Project: Aberdeen Western Peripheral Route Environmental Statement, Part D - Fastlink

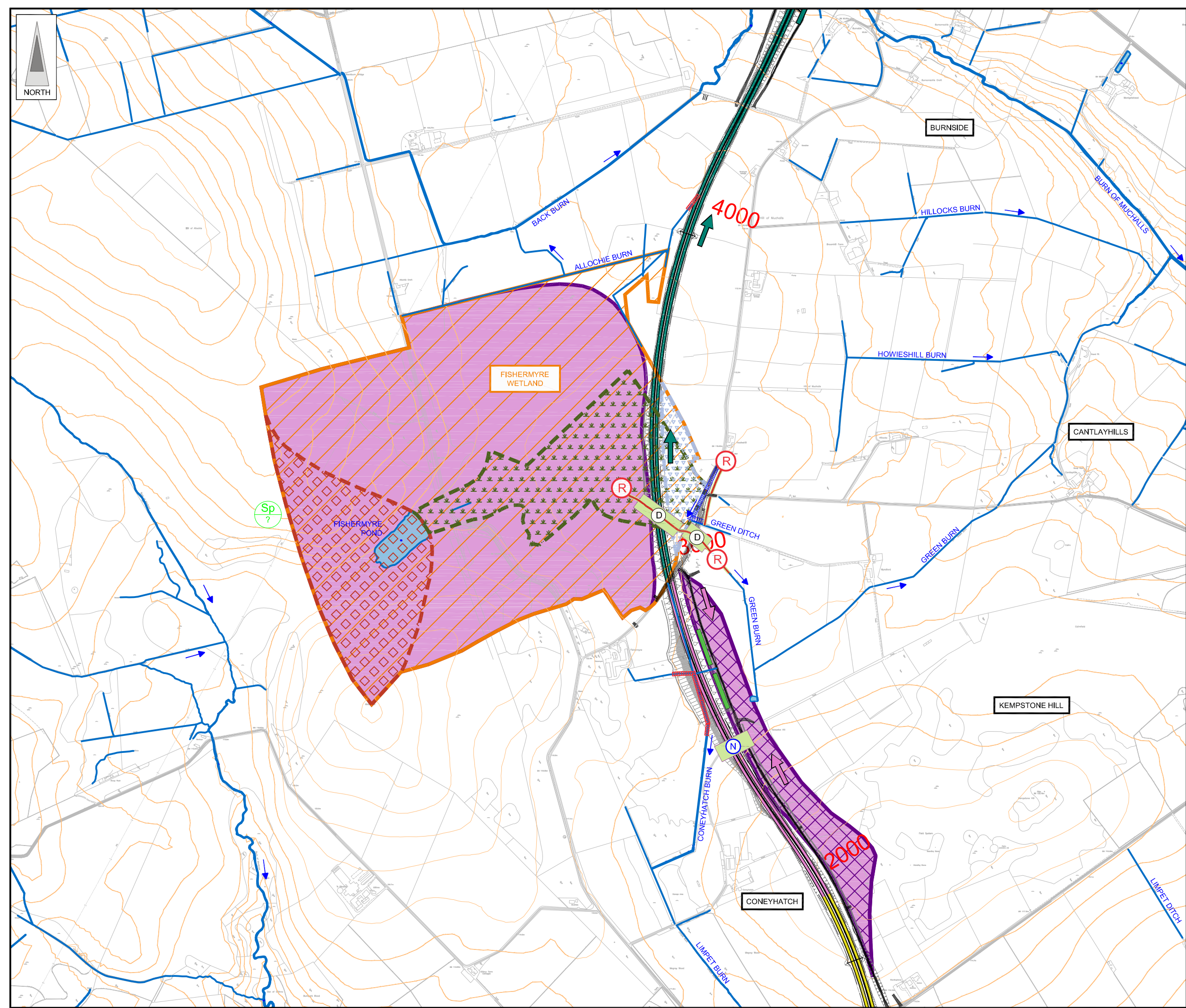
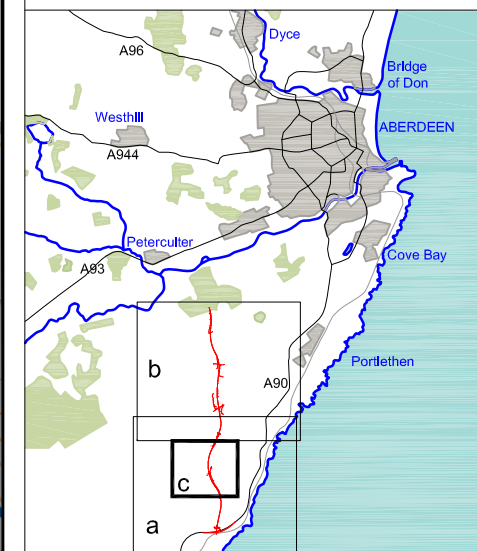
Title: Surface Water Hydrology Sheet 2 of 3

Drawing Status	FINAL	Revisions	
JB No.	0010332	Date	July 2007
Figure No.	FIGURE 39.2b	Checked	LB
Scale	1:25,000	Approved	SH
Drawn	MY	Checked	LB
		Approved	SH

This drawing is not to be used in whole or part other than for the intended purpose and project as defined on this drawing. Refer to the contract for full terms and conditions. Maps produced by Jacobs UK Ltd. This map should NOT be rescaled. Copyright reserved.

Continued from Sheet 1 of 3 (Figure 39.2a)

FIGURE 39.2c



- LEGEND**
- Proposed Route (Engineering Profile 04/05/07)
 - Watercourses
 - Direction of Flow
 - Waterbody
 - Hydrological Feature Indicative Boundary
 - Natural Catchment Boundary
 - Dissected Catchment Boundary outfalling to New Catchment
 - Fishermyme wetland area (water logged area)
 - Area of catchment draining Fishermyme Pond
 - Area severed by road
 - Spring Location
 - Private Groundwater Well Supply
 - Depressed Invert Culvert
 - Network Culvert
 - Stream Re-Alignment
 - Watercourse taken into pre-earthworks
 - Watercourse lost to stream re-alignment
 - Bridge
 - Drainage Treatment**
 - Swale
 - Drainage Runs**
 - Run A - Megray Burn
 - Run B - Green Burn
 - Run C - Burn of Muchalls

JE JACOBS
 95 Bothwell Street, Glasgow, G2 7HX, UK
 Tel: 0141 204 2511 Fax: 0141 226 3109
 www.jacobsbattle.com

Client			
Project	Aberdeen Western Peripheral Route Environmental Statement, Part D - Fastlink		
Title	Surface Water Hydrology Fishermyme Sheet 3 of 3		
Drawing Status	FINAL		
JB No.	0010332		
Figure No.	FIGURE 39.2c	Revisions	
Scale	1:10,000	Date	July 2007
Drawn	MY	Checked	LB
		Approved	SH