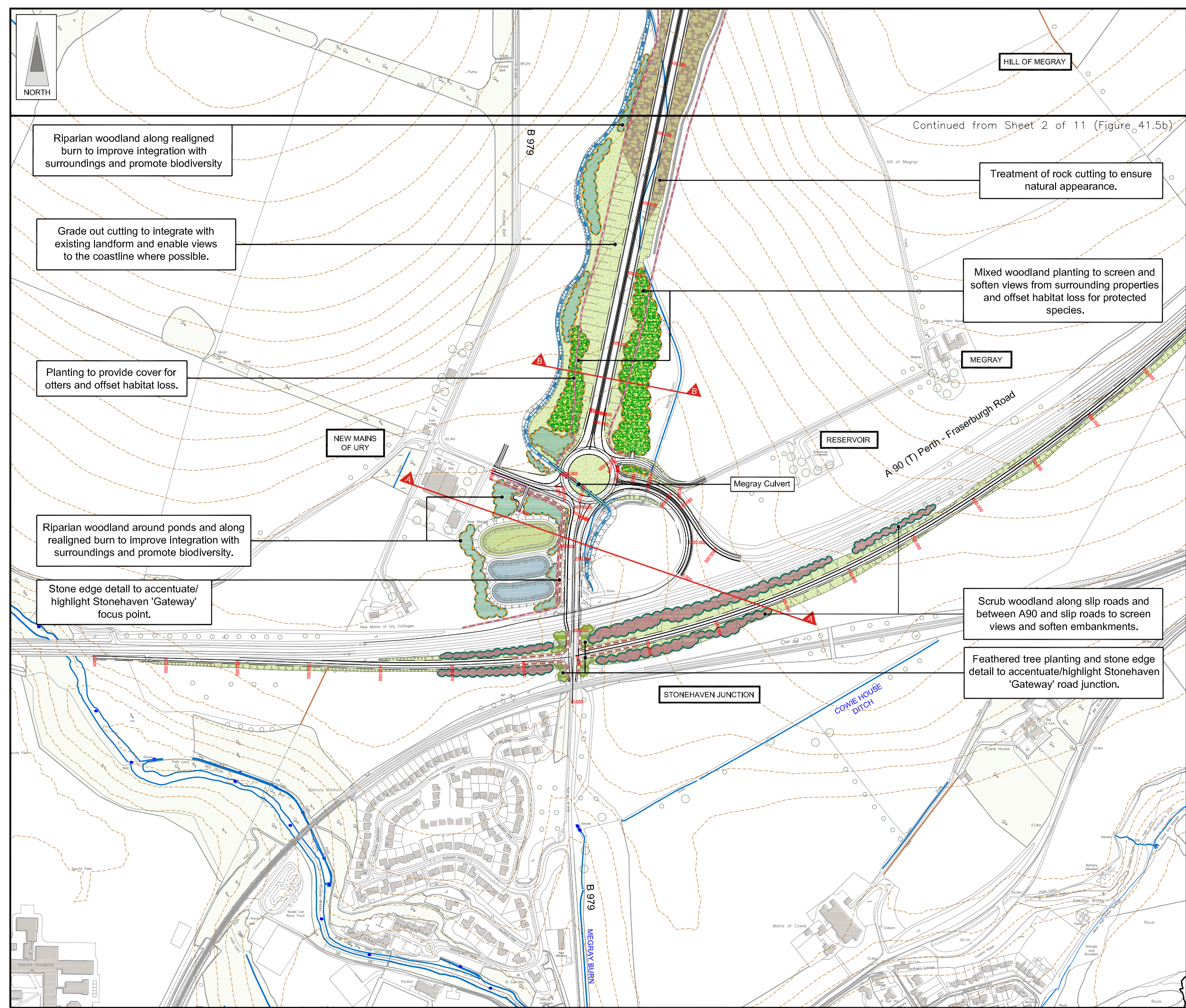
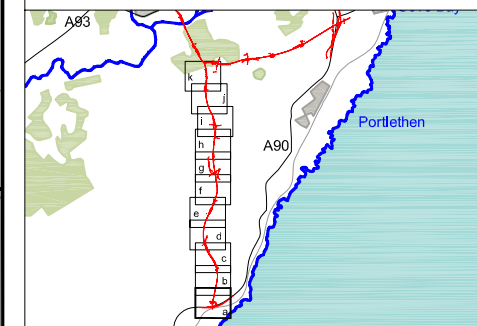


FIGURE 41.5a



Riparian woodland along realigned burn to improve integration with surroundings and promote biodiversity

Grade out cutting to integrate with existing landform and enable views to the coastline where possible.

Planting to provide cover for otters and offset habitat loss.

Riparian woodland around ponds and along realigned burn to improve integration with surroundings and promote biodiversity.

Stone edge detail to accentuate/highlight Stonehaven 'Gateway' focus point.

Treatment of rock cutting to ensure natural appearance.

Mixed woodland planting to screen and soften views from surrounding properties and offset habitat loss for protected species.

Scrub woodland along slip roads and between A90 and slip roads to screen views and soften embankments.

Feathered tree planting and stone edge detail to accentuate/highlight Stonehaven 'Gateway' road junction.

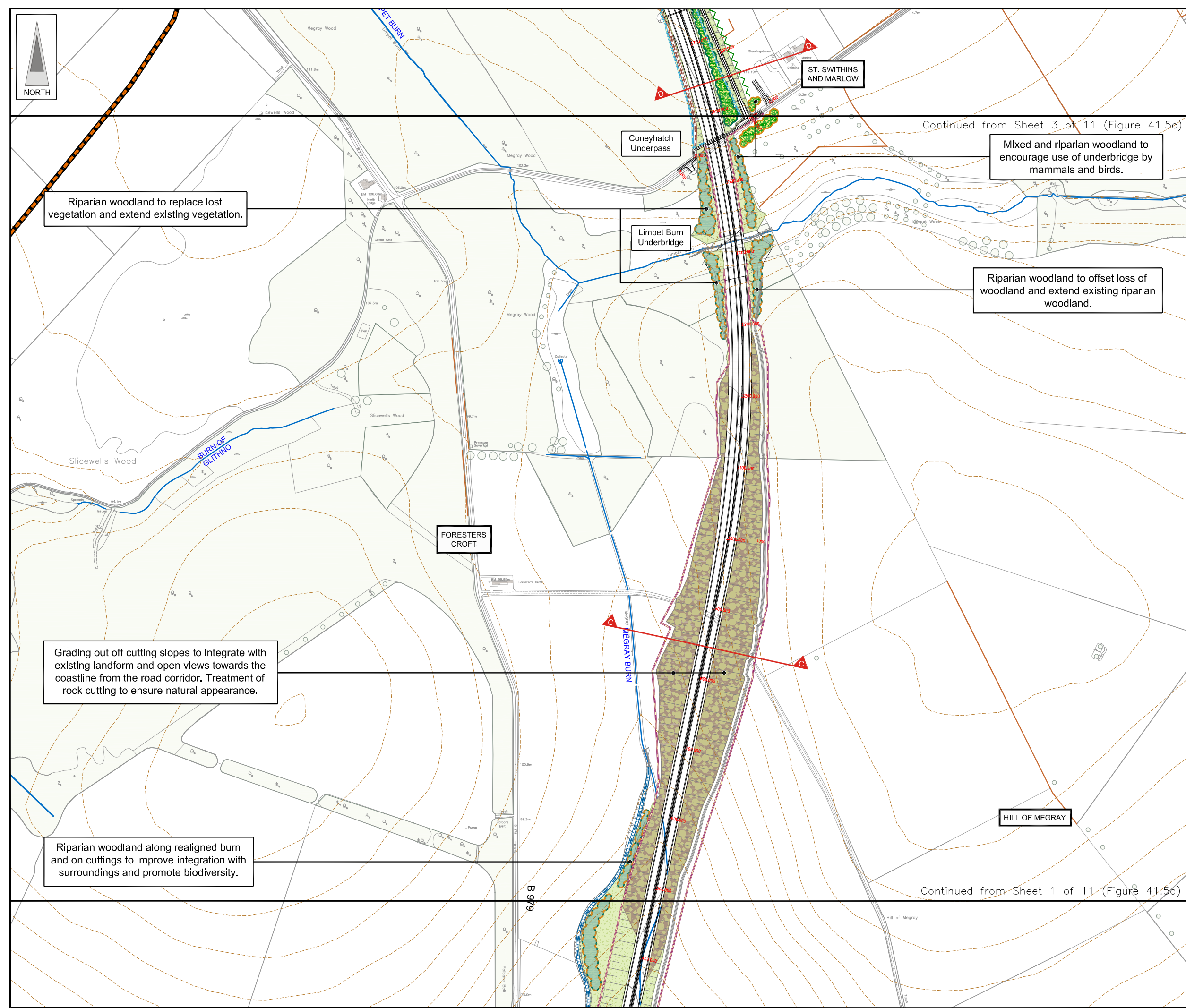
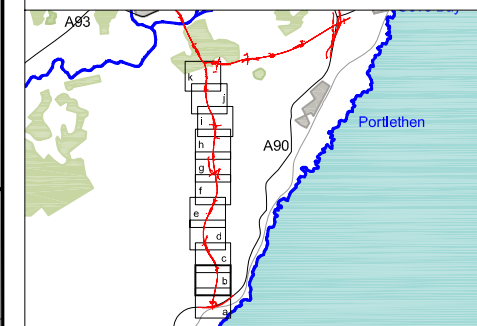
LEGEND

- Proposed Route (Engineering Profile 04/05/07)
- Detention Basins & Treatment Ponds
Green - Detention Basin
Blue - Treatment Pond
- Existing Vegetation / Retained Vegetation
- Existing Watercourses & Water Bodies
- Existing Contours (5m intervals)
- Drystone Wall
- Cross Section Locations
- BP / Shell Pipelines
- Planting Mitigation Proposals**
- Landscape Planting Proposals Only
- Ecological Planting Proposals Only
- Ecological & Landscape Planting
- Mixed Woodland Planting
- Coniferous Woodland Planting
- Broadleaved Woodland Planting
- Scrub Woodland Planting
- Riparian Woodland
- Landscape Mitigation Proposals**
- Species Rich Grassland
- Potential Rock Cut (sovn with pockets of native seed)
- Potential to Return to Agriculture
- Feathered Tree Planting (Groups of 10 Min)
- Extra Heavy Standard Trees/Standard Trees
- Hedgerow
- Proposed Drystone Wall
- Proposed Noise Barrier
- Ecological Mitigation Proposals**
- Dry Mammal Underpass
- Wildlife Bridge
- Culvert / Bridge (see individual labels)
- Re-aligned Watercourse
- Otter Fence / Badger Fence
- Bat Box Provision
- Re-located Otter Halls

JE JACOBS
 95 Bothwell Street, Glasgow, G2 7HX, UK
 Tel: 0141 204 2511 Fax: 0141 226 3109
 www.jacobsbablie.com

Client	Aberdeen Western Peripheral Route		
Project	Aberdeen Western Peripheral Route Environmental Statement, Part D - Fastlink		
Title	Landscape and Ecological Mitigation Sheet 1 of 11		
Drawing Status	FINAL	Revisions	
JB No.	0010332	Date	July 2007
Figure No.	FIGURE 41.5a	Checked	KS
Scale	1:5,000 @ A3	Approved	SH
Drawn	AG	Checked	KS
Approved		Approved	SH

FIGURE 41.5b



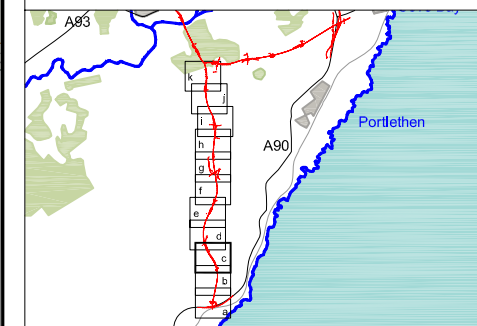
LEGEND

- Proposed Route (Engineering Profile 04/05/07)
- Detention Basins & Treatment Ponds
Green - Detention Basin
Blue - Treatment Pond
- Existing Vegetation / Retained Vegetation
- Existing Watercourses & Water Bodies
- Existing Contours (5m Intervals)
- Drystone Wall
- Cross Section Locations
- BP / Shell Pipelines
- Planting Mitigation Proposals**
- Landscape Planting Proposals Only
- Ecological Planting Proposals Only
- Ecological & Landscape Planting
- Mixed Woodland Planting
- Coniferous Woodland Planting
- Broadleaved Woodland Planting
- Scrub Woodland Planting
- Riparian Woodland
- Landscape Mitigation Proposals**
- Species Rich Grassland
- Potential Rock Cut (sown with pockets of native seed)
- Potential to Return to Agriculture
- Feathered Tree Planting (Groups of 10 Min)
- Extra Heavy Standard Trees/Standard Trees
- Hedgerow
- Proposed Drystone Wall
- Proposed Noise Barrier
- Ecological Mitigation Proposals**
- Dry Mammal Underpass
- Wildlife Bridge
- Culvert / Bridge (see individual labels)
- Re-aligned Watercourse
- Otter Fence / Badger Fence
- Bat Box Provision
- Re-located Otter Holes

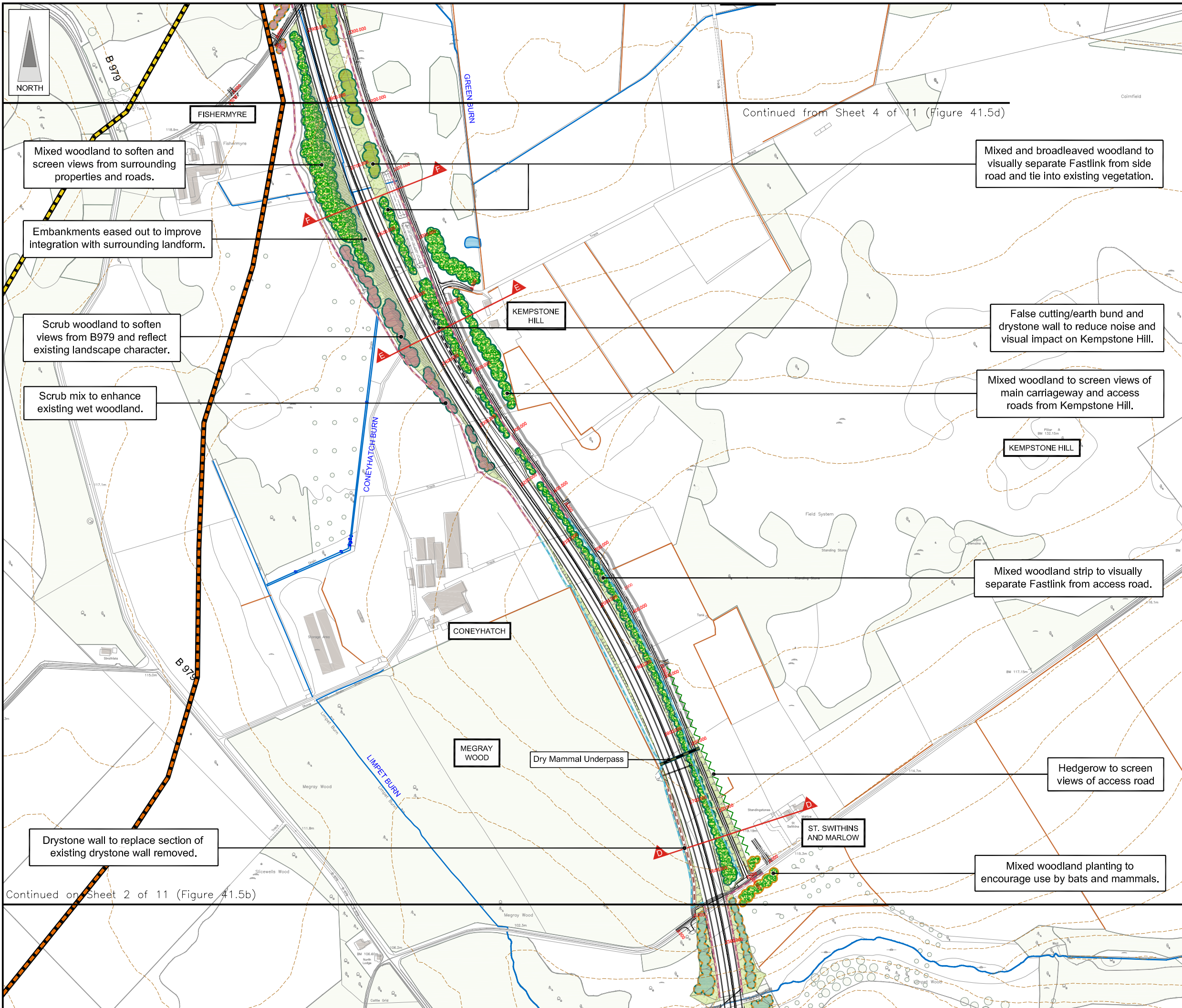
JE JACOBS
 95 Bothwell Street, Glasgow, G2 7HX, UK
 Tel: 0141 204 2511 Fax: 0141 226 3109
 www.jacobsbattle.com

Client			
Project	Aberdeen Western Peripheral Route Environmental Statement, Part D - Fastlink		
Title	Landscape and Ecological Mitigation Sheet 2 of 11		
Drawing Status	FINAL		
JB No.	0010332		
Figure No.	FIGURE 41.5b	Revisions	
Scale	1:5,000 @ A3	Date	July 2007
Drawn	AG	Checked	KS
		Approved	SH

FIGURE 41.5c



Continued from Sheet 4 of 11 (Figure 41.5d)



Continued on Sheet 2 of 11 (Figure 41.5b)

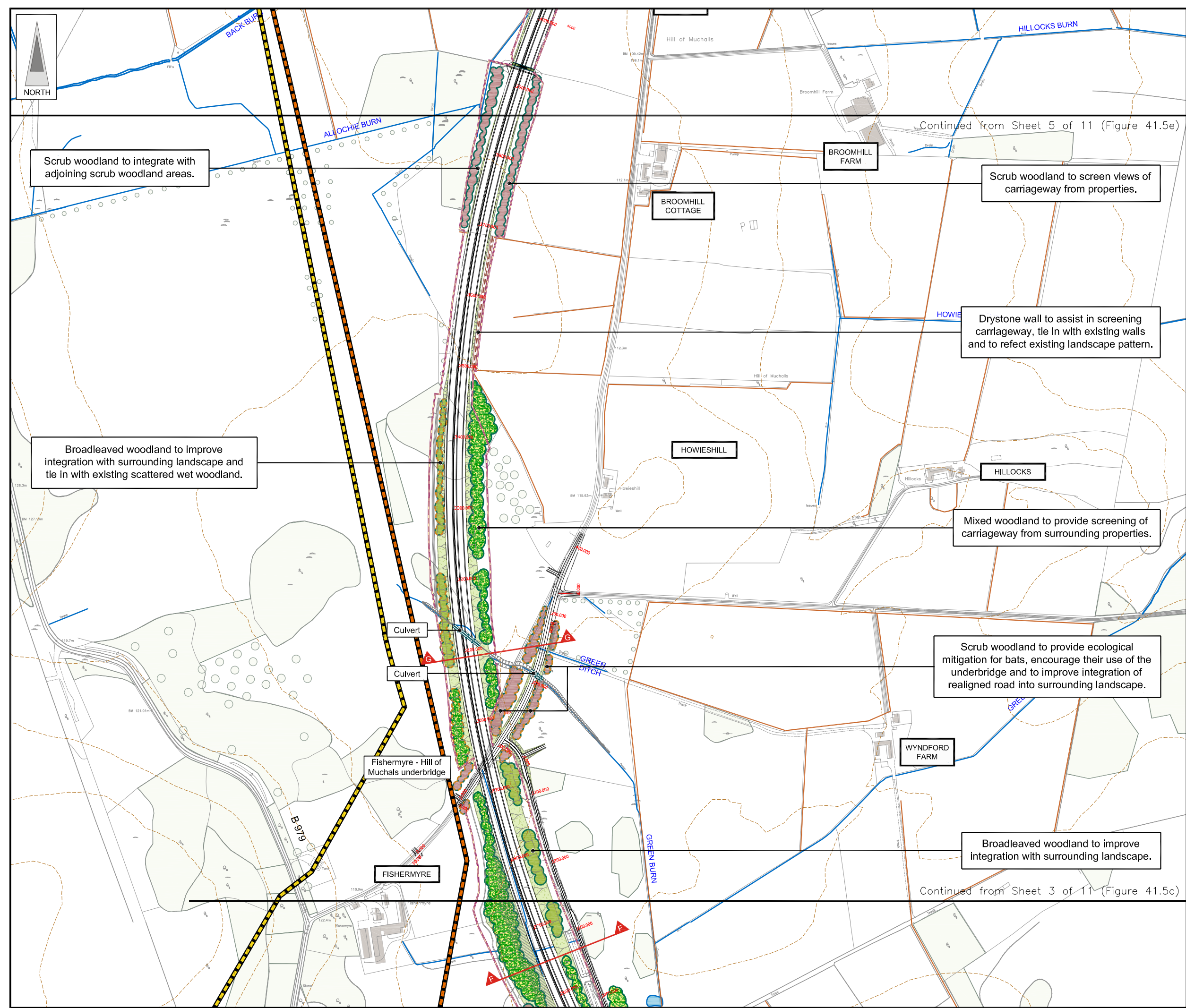
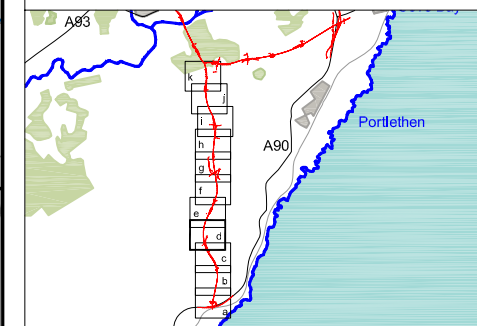
LEGEND

- Proposed Route (Engineering Profile 04/05/07)
- Detention Basins & Treatment Ponds
Green - Detention Basin
Blue - Treatment Pond
- Existing Vegetation / Retained Vegetation
- Existing Watercourses & Water Bodies
- Existing Contours (5m Intervals)
- Drystone Wall
- Cross Section Locations
- BP / Shell Pipelines
- Planting Mitigation Proposals**
- Landscape Planting Proposals Only
- Ecological Planting Proposals Only
- Ecological & Landscape Planting
- Mixed Woodland Planting
- Coniferous Woodland Planting
- Broadleaved Woodland Planting
- Scrub Woodland Planting
- Riparian Woodland
- Landscape Mitigation Proposals**
- Species Rich Grassland
- Potential Rock Cut (sown with pockets of native seed)
- Potential to Return to Agriculture
- Feathered Tree Planting (Groups of 10 Min)
- Extra Heavy Standard Trees/Standard Trees
- Hedgerow
- Proposed Drystone Wall
- Proposed Noise Barrier
- Ecological Mitigation Proposals**
- Dry Mammal Underpass
- Wildlife Bridge
- Culvert / Bridge (see individual labels)
- Re-aligned Watercourse
- Otter Fence / Badger Fence
- Bat Box Provision
- Re-located Otter Holes

JE JACOBS
 95 Bothwell Street, Glasgow, G2 7HX, UK
 Tel: 0141 204 2511 Fax: 0141 226 3109
 www.jacobsbattle.com

Client	Aberdeen Western Peripheral Route		
Project	Aberdeen Western Peripheral Route Environmental Statement, Part D - Fastlink		
Title	Landscape and Ecological Mitigation Sheet 3 of 11		
Drawing Status	FINAL	Revisions	
JB No.	0010332	Checked	KS
Figure No.	FIGURE 41.5c	Date	July 2007
Scale	1:5,000 @ A3	Approved	SH
Drawn	AG	Checked	KS

FIGURE 41.5d



Scrub woodland to integrate with adjoining scrub woodland areas.

Broadleaved woodland to improve integration with surrounding landscape and tie in with existing scattered wet woodland.

BROOMHILL COTTAGE

BROOMHILL FARM

Scrub woodland to screen views of carriageway from properties.

Drystone wall to assist in screening carriageway, tie in with existing walls and to reflect existing landscape pattern.

HOWIESHILL

Mixed woodland to provide screening of carriageway from surrounding properties.

HILLOCKS

Scrub woodland to provide ecological mitigation for bats, encourage their use of the underbridge and to improve integration of realigned road into surrounding landscape.

WYNDFORD FARM

Broadleaved woodland to improve integration with surrounding landscape.

Fishermyre - Hill of Muchalls underbridge

FISHERMYRE

Continued from Sheet 3 of 11 (Figure 41.5c)

LEGEND

- Proposed Route (Engineering Profile 04/05/07)
- Detention Basins & Treatment Ponds
 - Green - Detention Basin
 - Blue - Treatment Pond
- Existing Vegetation / Retained Vegetation
- Existing Watercourses & Water Bodies
- Existing Contours (5m Intervals)
- Drystone Wall
- Cross Section Locations
- BP / Shell Pipelines

Planting Mitigation Proposals

- Landscape Planting Proposals Only
- Ecological Planting Proposals Only
- Ecological & Landscape Planting
- Mixed Woodland Planting
- Coniferous Woodland Planting
- Broadleaved Woodland Planting
- Scrub Woodland Planting
- Riparian Woodland

Landscape Mitigation Proposals

- Species Rich Grassland
- Potential Rock Cut (sown with pockets of native seed)
- Potential to Return to Agriculture
- Feathered Tree Planting (Groups of 10 Min)
- Extra Heavy Standard Trees/Standard Trees
- Hedgerow
- Proposed Drystone Wall
- Proposed Noise Barrier

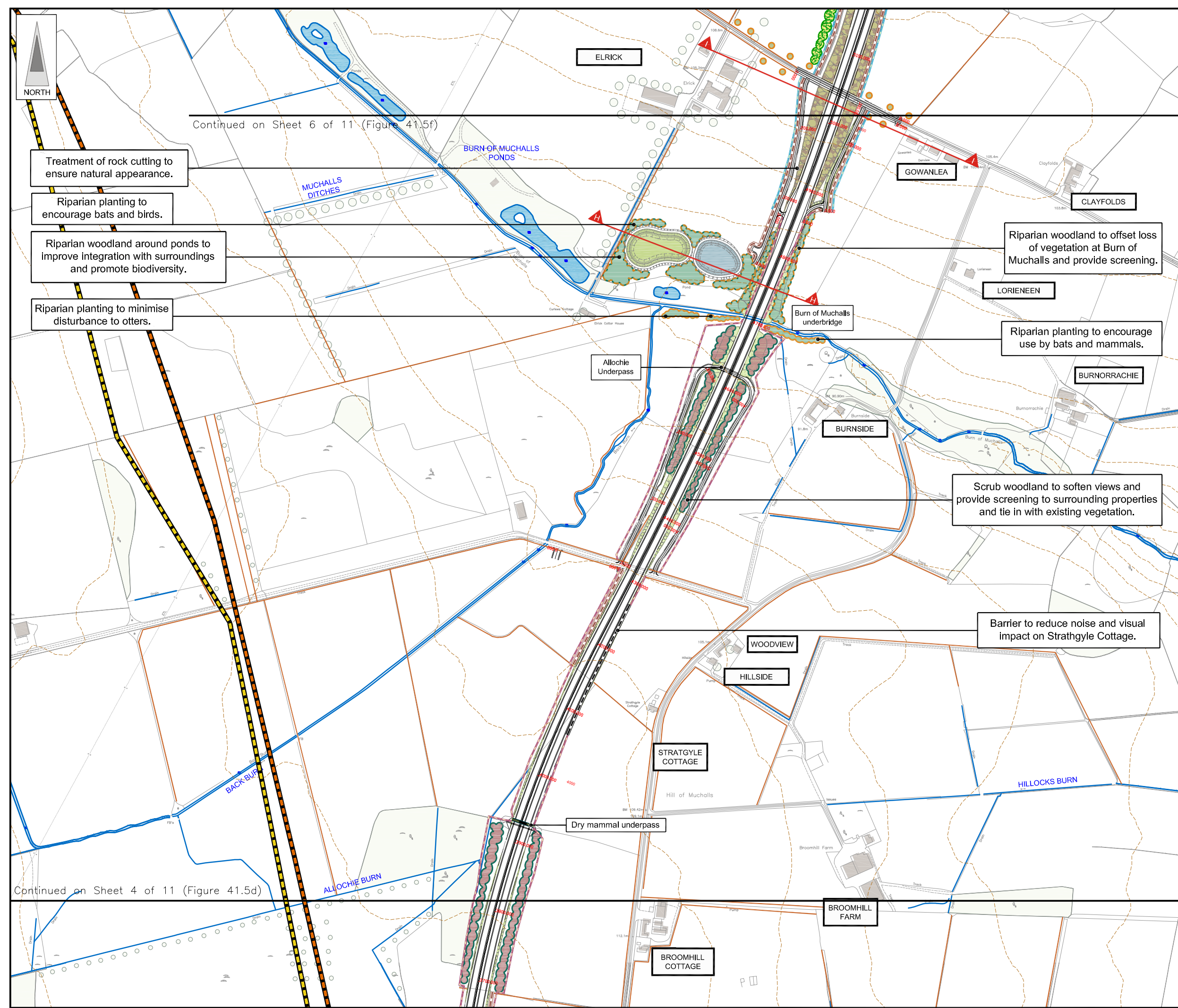
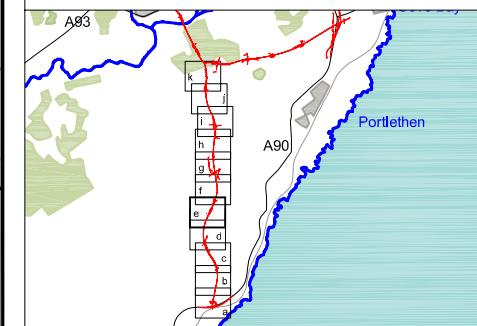
Ecological Mitigation Proposals

- Dry Mammal Underpass
- Wildlife Bridge
- Culvert / Bridge (see individual labels)
- Re-aligned Watercourse
- Otter Fence / Badger Fence
- Bat Box Provision
- Re-located Otter Holes

JE JACOBS
 95 Bothwell Street, Glasgow, G2 7HX, UK
 Tel: 0141 204 2511 Fax: 0141 226 3109
 www.jacobsbattle.com

Client	Aberdeen Western Peripheral Route		
Project	Aberdeen Western Peripheral Route Environmental Statement, Part D - Fastlink		
Title	Landscape and Ecological Mitigation Sheet 4 of 11		
Drawing Status	FINAL		
JB No.	0010332		
Figure No.	FIGURE 41.5d	Revisions	
Scale	1:5,000 @ A3	Date	July 2007
Drawn	AG	Checked	KS
		Approved	SH

FIGURE 41.5e



Treatment of rock cutting to ensure natural appearance.

Riparian planting to encourage bats and birds.

Riparian woodland around ponds to improve integration with surroundings and promote biodiversity.

Riparian planting to minimise disturbance to otters.

Riparian woodland to offset loss of vegetation at Burn of Muchalls and provide screening.

Riparian planting to encourage use by bats and mammals.

Scrub woodland to soften views and provide screening to surrounding properties and tie in with existing vegetation.

Barrier to reduce noise and visual impact on Strathgyle Cottage.

LEGEND

- Proposed Route (Engineering Profile 04/05/07)
- Detention Basins & Treatment Ponds
 - Green - Detention Basin
 - Blue - Treatment Pond
- Existing Vegetation / Retained Vegetation
- Existing Watercourses & Water Bodies
- Existing Contours (5m intervals)
- Drystone Wall
- Cross Section Locations
- BP / Shell Pipelines

Planting Mitigation Proposals

- Landscape Planting Proposals Only
- Ecological Planting Proposals Only
- Ecological & Landscape Planting
- Mixed Woodland Planting
- Coniferous Woodland Planting
- Broadleaved Woodland Planting
- Scrub Woodland Planting
- Riparian Woodland

Landscape Mitigation Proposals

- Species Rich Grassland
- Potential Rock Cut (sown with pockets of native seed)
- Potential to Return to Agriculture
- Feathered Tree Planting (Groups of 10 Min)
- Extra Heavy Standard Trees/Standard Trees
- Hedgerow
- Proposed Drystone Wall
- Proposed Noise Barrier

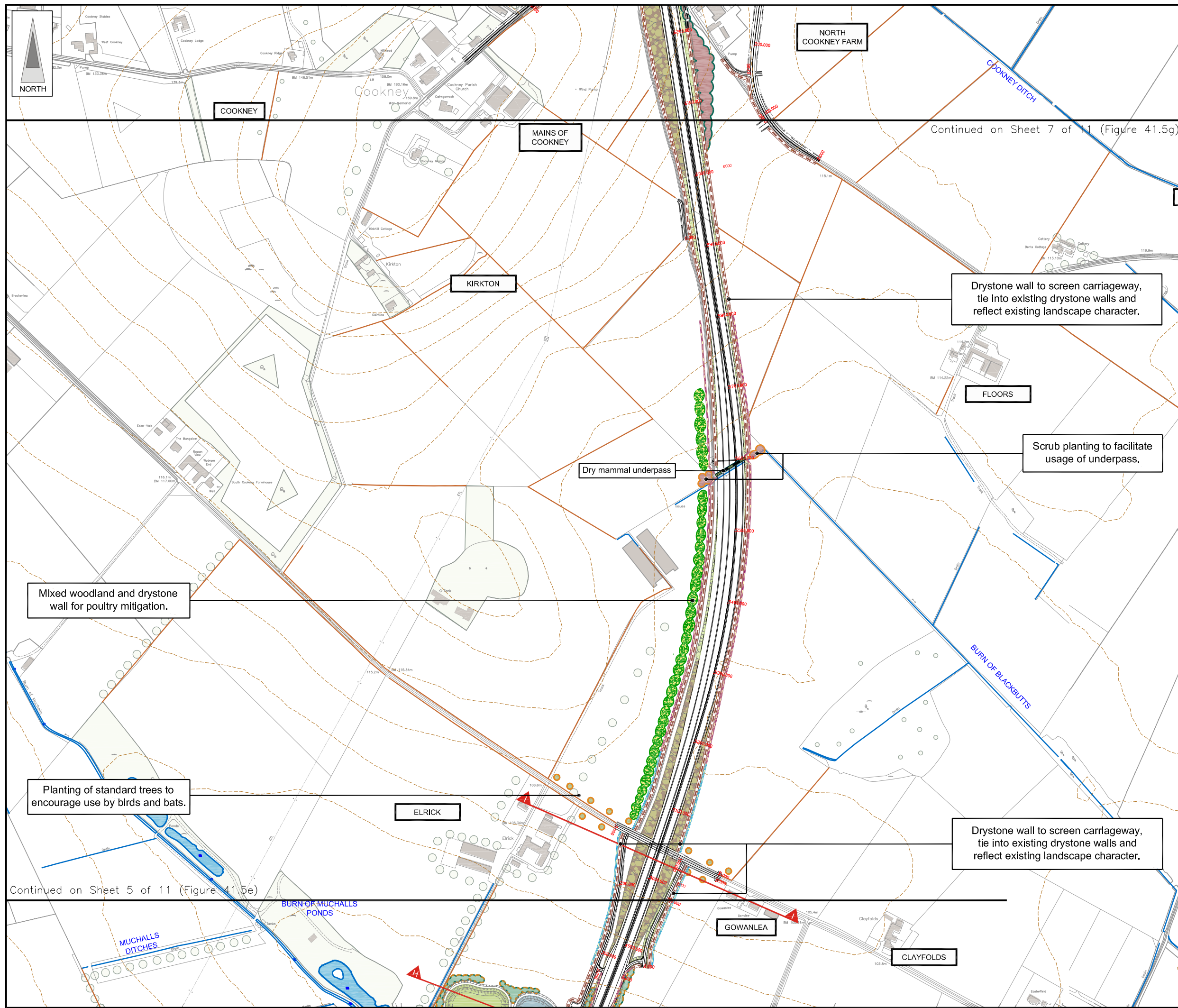
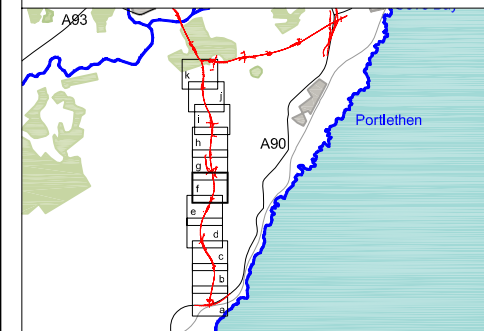
Ecological Mitigation Proposals

- Dry Mammal Underpass
- Wildlife Bridge
- Culvert / Bridge (see individual labels)
- Re-aligned Watercourse
- Otter Fence / Badger Fence
- Bat Box Provision
- Re-located Otter Holes

JE JACOBS
 95 Bothwell Street, Glasgow, G2 7HX, UK
 Tel: 0141 204 2511 Fax: 0141 226 3109
 www.jacobsbattle.com

Client	Aberdeen Western Peripheral Route		
Project	Aberdeen Western Peripheral Route Environmental Statement, Part D - Fastlink		
Title	Landscape and Ecological Mitigation Sheet 5 of 11		
Drawing Status	FINAL	Revisions	
JB No.	0010332	Date	July 2007
Figure No.	FIGURE 41.5e	Checked	KS
Scale	1:5,000 @ A3	Approved	SH
Drawn	AG	Checked	KS
Approved		Approved	SH

FIGURE 41.5f



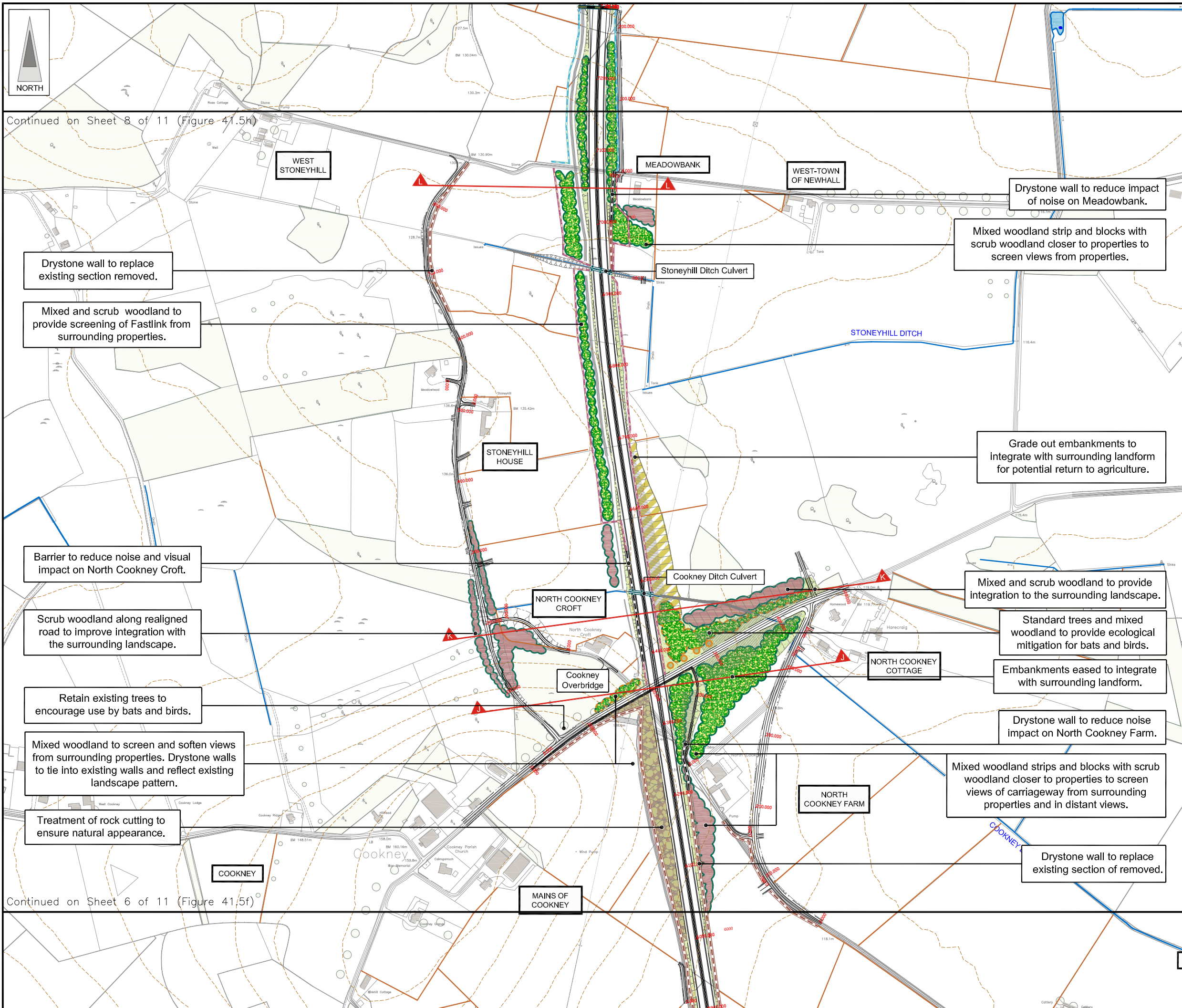
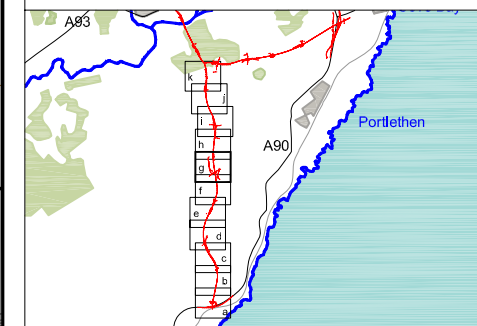
LEGEND

- Proposed Route (Engineering Profile 04/05/07)
- Detention Basins & Treatment Ponds
Green - Detention Basin
Blue - Treatment Pond
- Existing Vegetation / Retained Vegetation
- Existing Watercourses & Water Bodies
- Existing Contours (5m intervals)
- Drystone Wall
- Cross Section Locations
- BP / Shell Pipelines
- Planting Mitigation Proposals**
- Landscape Planting Proposals Only
- Ecological Planting Proposals Only
- Ecological & Landscape Planting
- Mixed Woodland Planting
- Coniferous Woodland Planting
- Broadleaved Woodland Planting
- Scrub Woodland Planting
- Riparian Woodland
- Landscape Mitigation Proposals**
- Species Rich Grassland
- Potential Rock Cut (sown with pockets of native seed)
- Potential to Return to Agriculture
- Feathered Tree Planting (Groups of 10 Min)
- Extra Heavy Standard Trees/Standard Trees
- Hedgerow
- Proposed Drystone Wall
- Proposed Noise Barrier
- Ecological Mitigation Proposals**
- Dry Mammal Underpass
- Wildlife Bridge
- Culvert / Bridge (see individual labels)
- Re-aligned Watercourse
- Otter Fence / Badger Fence
- Bat Box Provision
- Re-located Otter Holes

JE JACOBS
 95 Bothwell Street, Glasgow, G2 7HX, UK
 Tel: 0141 204 2511 Fax: 0141 226 3109
 www.jacobstablie.com

Client	Aberdeen Western Peripheral Route		
Project	Aberdeen Western Peripheral Route Environmental Statement, Part D - Fastlink		
Title	Landscape and Ecological Mitigation Sheet 6 of 11		
Drawing Status	FINAL	Revisions	
JB No.	0010332	Checked	KS
Figure No.	FIGURE 41.5f	Date	July 2007
Scale	1:5,000 @ A3	Approved	SH
Drawn	AG	Checked	KS

FIGURE 41.5g



LEGEND

- Proposed Route (Engineering Profile 04/05/07)
- Detention Basins & Treatment Ponds
 - Green - Detention Basin
 - Blue - Treatment Pond
- Existing Vegetation / Retained Vegetation
- Existing Watercourses & Water Bodies
- Existing Contours (5m Intervals)
- Drystone Wall
- Cross Section Locations
- BP / Shell Pipelines

Planting Mitigation Proposals

- Landscape Planting Proposals Only
- Ecological Planting Proposals Only
- Ecological & Landscape Planting
- Mixed Woodland Planting
- Coniferous Woodland Planting
- Broadleaved Woodland Planting
- Scrub Woodland Planting
- Riparian Woodland

Landscape Mitigation Proposals

- Species Rich Grassland
- Potential Rock Cut (sown with pockets of native seed)
- Potential to Return to Agriculture
- Feathered Tree Planting (Groups of 10 Min)
- Extra Heavy Standard Trees/Standard Trees
- Hedgerow
- Proposed Drystone Wall
- Proposed Noise Barrier

Ecological Mitigation Proposals

- Dry Mammal Underpass
- Wildlife Bridge
- Culvert / Bridge (see individual labels)
- Re-aligned Watercourse
- Otter Fence / Badger Fence
- Bat Box Provision
- Re-located Otter Holes

Continued on Sheet 8 of 11 (Figure 41.5h)

Continued on Sheet 6 of 11 (Figure 41.5f)

JE JACOBS
 95 Bothwell Street, Glasgow, G2 7HX, UK
 Tel: 0141 204 2511 Fax: 0141 226 3109
 www.jacobsbattle.com

Client: Aberdeen Western Peripheral Route

Project: Aberdeen Western Peripheral Route Environmental Statement, Part D - Fastlink

Title: Landscape and Ecological Mitigation Sheet 7 of 11

Drawing Status: FINAL
 JB No. 0010332

Figure No. FIGURE 41.5g

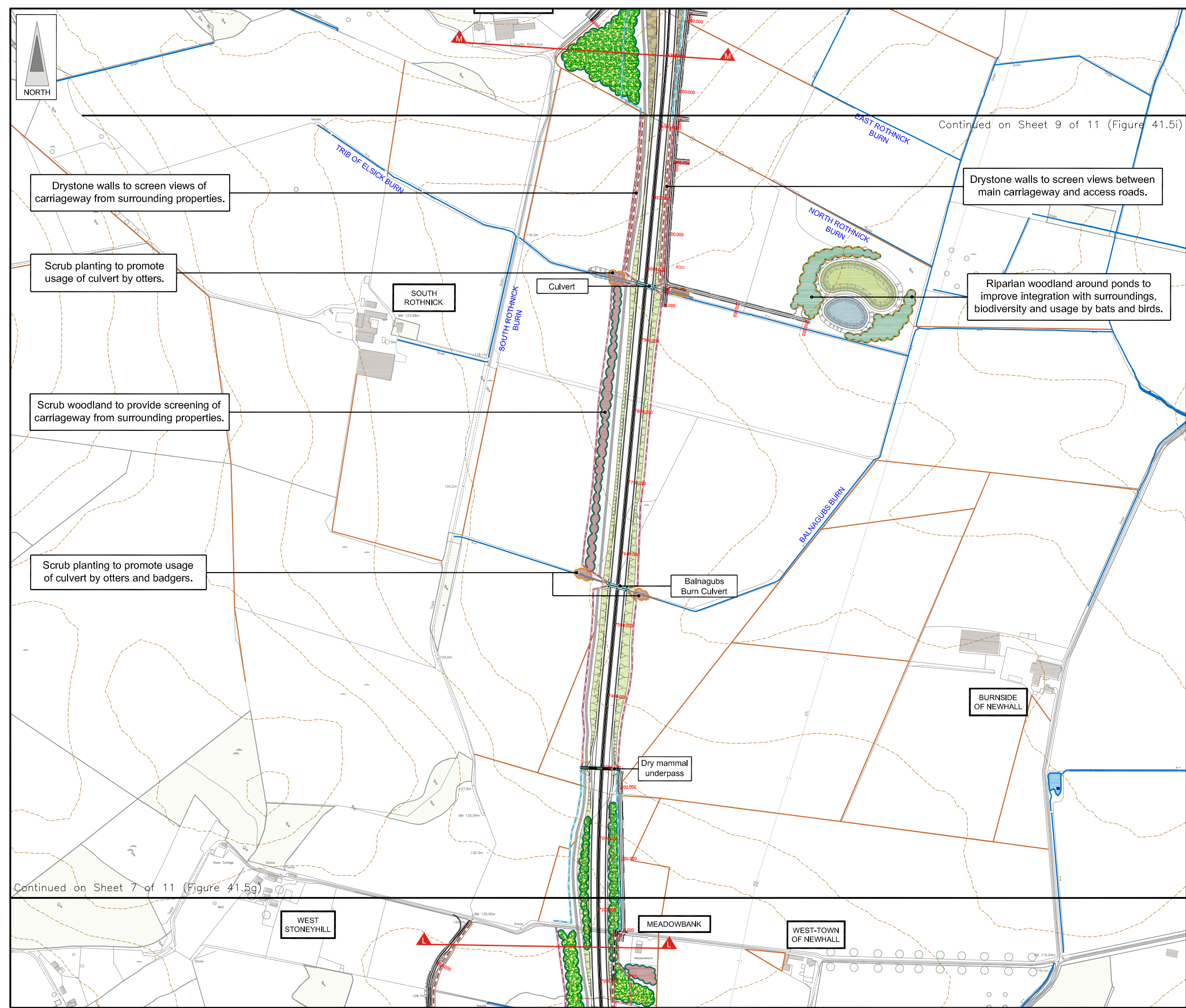
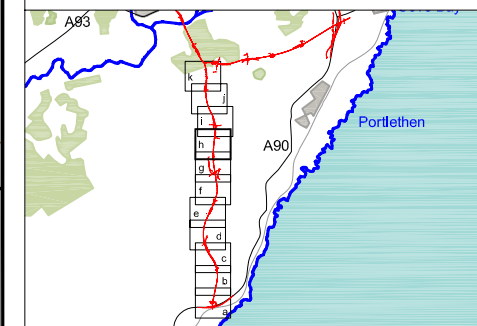
Scale: 1:5,000 @ A3

Drawn: AG Checked: KS Approved: SH

Date: July 2007

Revisions:

FIGURE 41.5h



Drystone walls to screen views of carriageway from surrounding properties.

Scrub planting to promote usage of culvert by otters.

Scrub woodland to provide screening of carriageway from surrounding properties.

Scrub planting to promote usage of culvert by otters and badgers.

Drystone walls to screen views between main carriageway and access roads.

Riparian woodland around ponds to improve integration with surroundings, biodiversity and usage by bats and birds.

Continued on Sheet 7 of 11 (Figure 41.5g)

Continued on Sheet 9 of 11 (Figure 41.5i)

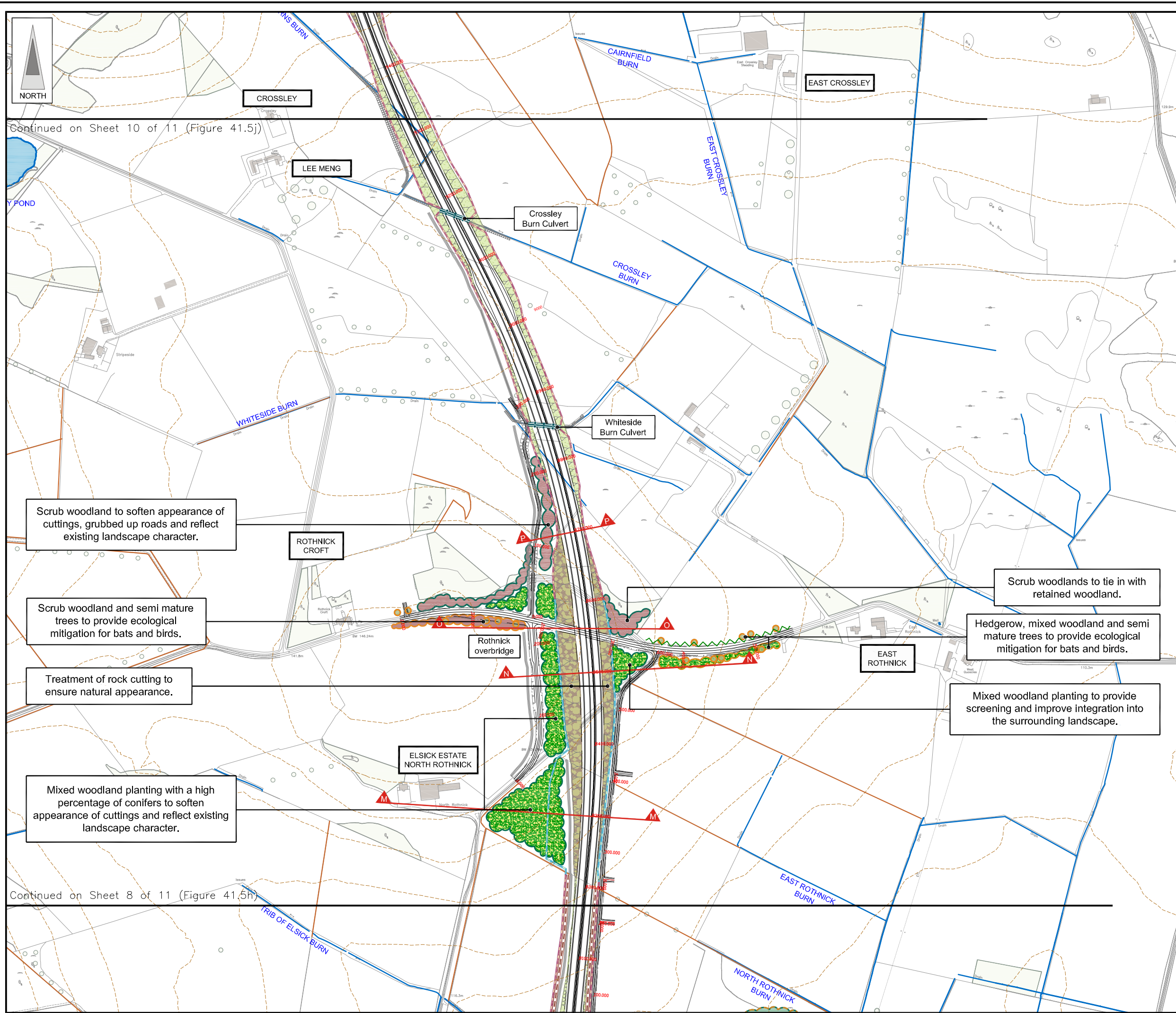
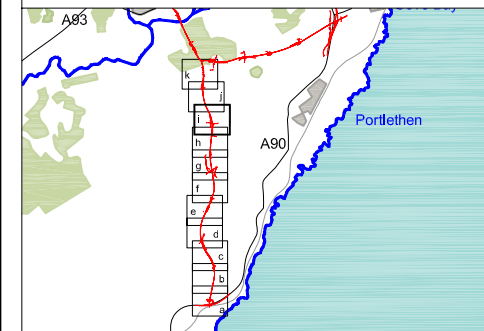
LEGEND

- Proposed Route (Engineering Profile 04/05/07)
 - Detention Basins & Treatment Ponds
Green - Detention Basin
Blue - Treatment Pond
 - Existing Vegetation / Retained Vegetation
 - Existing Watercourses & Water Bodies
 - Existing Contours (5m intervals)
 - Drystone Wall
 - Cross Section Locations
 - BP / Shell Pipelines
- Planting Mitigation Proposals**
- Landscape Planting Proposals Only
 - Ecological Planting Proposals Only
 - Ecological & Landscape Planting
 - Mixed Woodland Planting
 - Coniferous Woodland Planting
 - Broadleaved Woodland Planting
 - Scrub Woodland Planting
 - Riparian Woodland
- Landscape Mitigation Proposals**
- Species Rich Grassland
 - Potential Rock Cut (sown with pockets of native seed)
 - Potential to Return to Agriculture
 - Feathered Tree Planting (Groups of 10 Min)
 - Extra Heavy Standard Trees/Standard Trees
 - Hedgerow
 - Proposed Drystone Wall
 - Proposed Noise Barrier
- Ecological Mitigation Proposals**
- Dry Mammal Underpass
 - Wildlife Bridge
 - Culvert / Bridge (see individual labels)
 - Re-aligned Watercourse
 - Otter Fence / Badger Fence
 - Bat Box Provision
 - Re-located Otter Holes

JE JACOBS
 95 Bothwell Street, Glasgow, G2 7HX, UK
 Tel: 0141 204 2511 Fax: 0141 226 3109
 www.jacobsbable.com

Client	Aberdeen Western Peripheral Route		
Project	Aberdeen Western Peripheral Route Environmental Statement, Part D - Fastlink		
Title	Landscape and Ecological Mitigation Sheet 8 of 11		
Drawing Status	FINAL	Revisions	
JB No.	0010332	Checked	KS
Figure No.	FIGURE 41.5h	Date	July 2007
Scale	1:5,000 @ A3	Approved	SH
Drawn	AG	Checked	KS

FIGURE 41.5i



LEGEND

- Proposed Route (Engineering Profile 04/05/07)
- Detention Basins & Treatment Ponds
Green - Detention Basin
Blue - Treatment Pond
- Existing Vegetation / Retained Vegetation
- Existing Watercourses & Water Bodies
- Existing Contours (5m intervals)
- Drystone Wall
- Cross Section Locations
- BP / Shell Pipelines
- Planting Mitigation Proposals**
- Landscape Planting Proposals Only
- Ecological Planting Proposals Only
- Ecological & Landscape Planting
- Mixed Woodland Planting
- Coniferous Woodland Planting
- Broadleaved Woodland Planting
- Scrub Woodland Planting
- Riparian Woodland
- Landscape Mitigation Proposals**
- Species Rich Grassland
- Potential Rock Cut (sown with pockets of native seed)
- Potential to Return to Agriculture
- Feathered Tree Planting (Groups of 10 Min)
- Extra Heavy Standard Trees/Standard Trees
- Hedgerow
- Proposed Drystone Wall
- Proposed Noise Barrier
- Ecological Mitigation Proposals**
- Dry Mammal Underpass
- Wildlife Bridge
- Culvert / Bridge (see individual labels)
- Re-aligned Watercourse
- Otter Fence / Badger Fence
- Bat Box Provision
- Re-located Otter Holes

Scrub woodland to soften appearance of cuttings, grubbed up roads and reflect existing landscape character.

Scrub woodland and semi mature trees to provide ecological mitigation for bats and birds.

Treatment of rock cutting to ensure natural appearance.

Mixed woodland planting with a high percentage of conifers to soften appearance of cuttings and reflect existing landscape character.

Scrub woodlands to tie in with retained woodland.

Hedgerow, mixed woodland and semi mature trees to provide ecological mitigation for bats and birds.

Mixed woodland planting to provide screening and improve integration into the surrounding landscape.

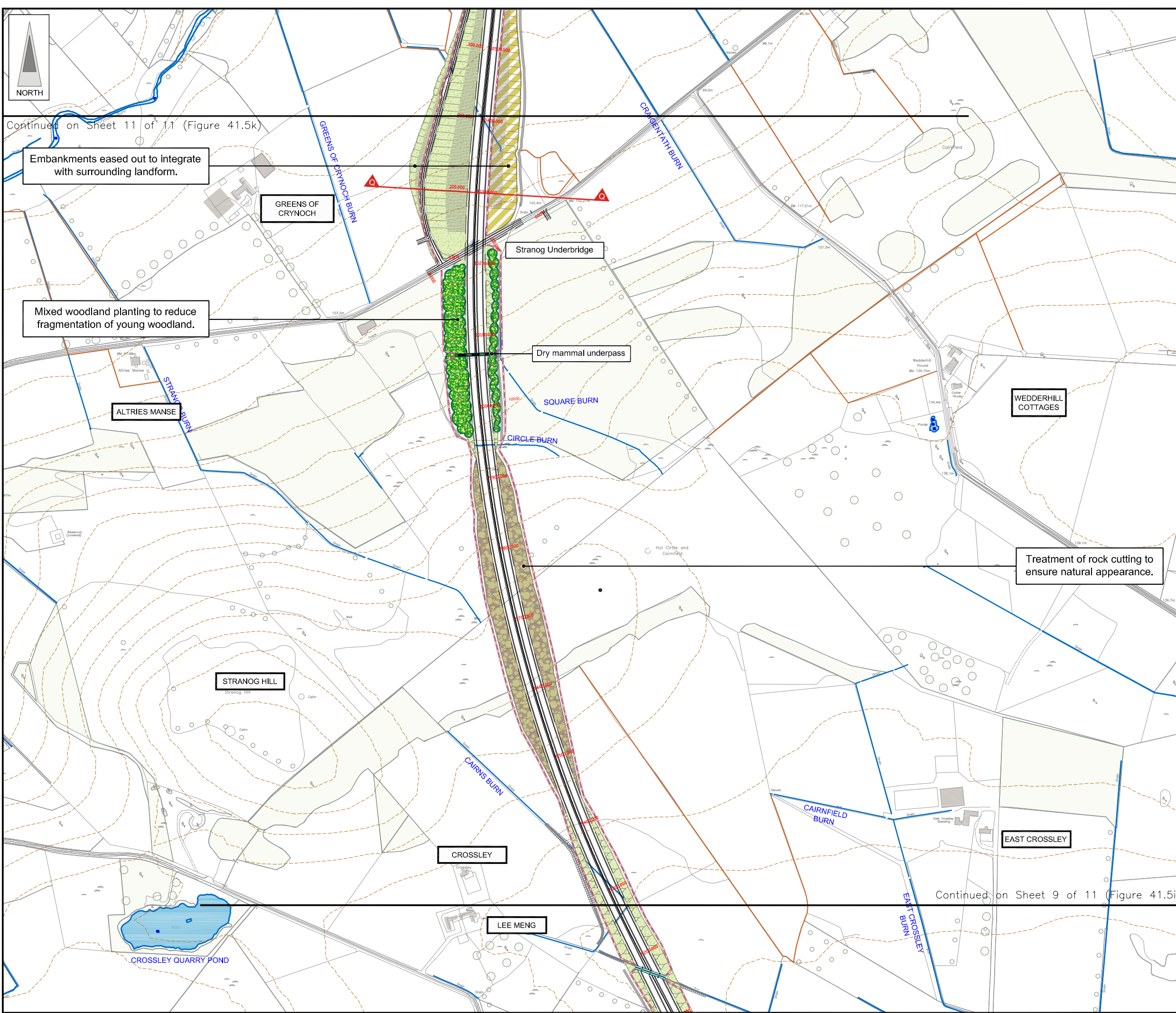
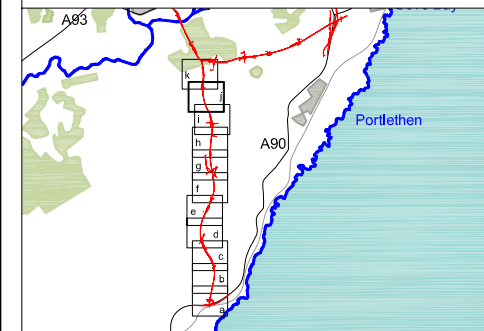
Continued on Sheet 10 of 11 (Figure 41.5j)

Continued on Sheet 8 of 11 (Figure 41.5h)

JE JACOBS
 95 Bothwell Street, Glasgow, G2 7HX, UK
 Tel: 0141 204 2511 Fax: 0141 226 3109
 www.jacobsablaie.com

Client	Aberdeen Western Peripheral Route		
Project	Aberdeen Western Peripheral Route Environmental Statement, Part D - Fastlink		
Title	Landscape and Ecological Mitigation Sheet 9 of 11		
Drawing Status	FINAL	Revisions	
JB No.	0010332	Date	July 2007
Figure No.	FIGURE 41.5i	Checked	KS
Scale	1:5,000 @ A3	Approved	SH
Drawn	AG	Checked	KS
Approved		Approved	SH

FIGURE 41.5j



LEGEND

- Proposed Route (Engineering Profile 04/05/07)
- Detention Basins & Treatment Ponds
 - Green - Detention Basin
 - Blue - Treatment Pond
- Existing Vegetation / Retained Vegetation
- Existing Watercourses & Water Bodies
- Existing Contours (5m Intervals)
- Drystone Wall
- Cross Section Locations
- BP / Shell Pipelines

Planting Mitigation Proposals

- Landscape Planting Proposals Only
- Ecological Planting Proposals Only
- Ecological & Landscape Planting
- Mixed Woodland Planting
- Coniferous Woodland Planting
- Broadleaved Woodland Planting
- Scrub Woodland Planting
- Riparian Woodland

Landscape Mitigation Proposals

- Species Rich Grassland
- Potential Rock Cut (sown with pockets of native seed)
- Potential to Return to Agriculture
- Feathered Tree Planting (Groups of 10 Min)
- Extra Heavy Standard Trees/Standard Trees
- Hedgerow
- Proposed Drystone Wall
- Proposed Noise Barrier

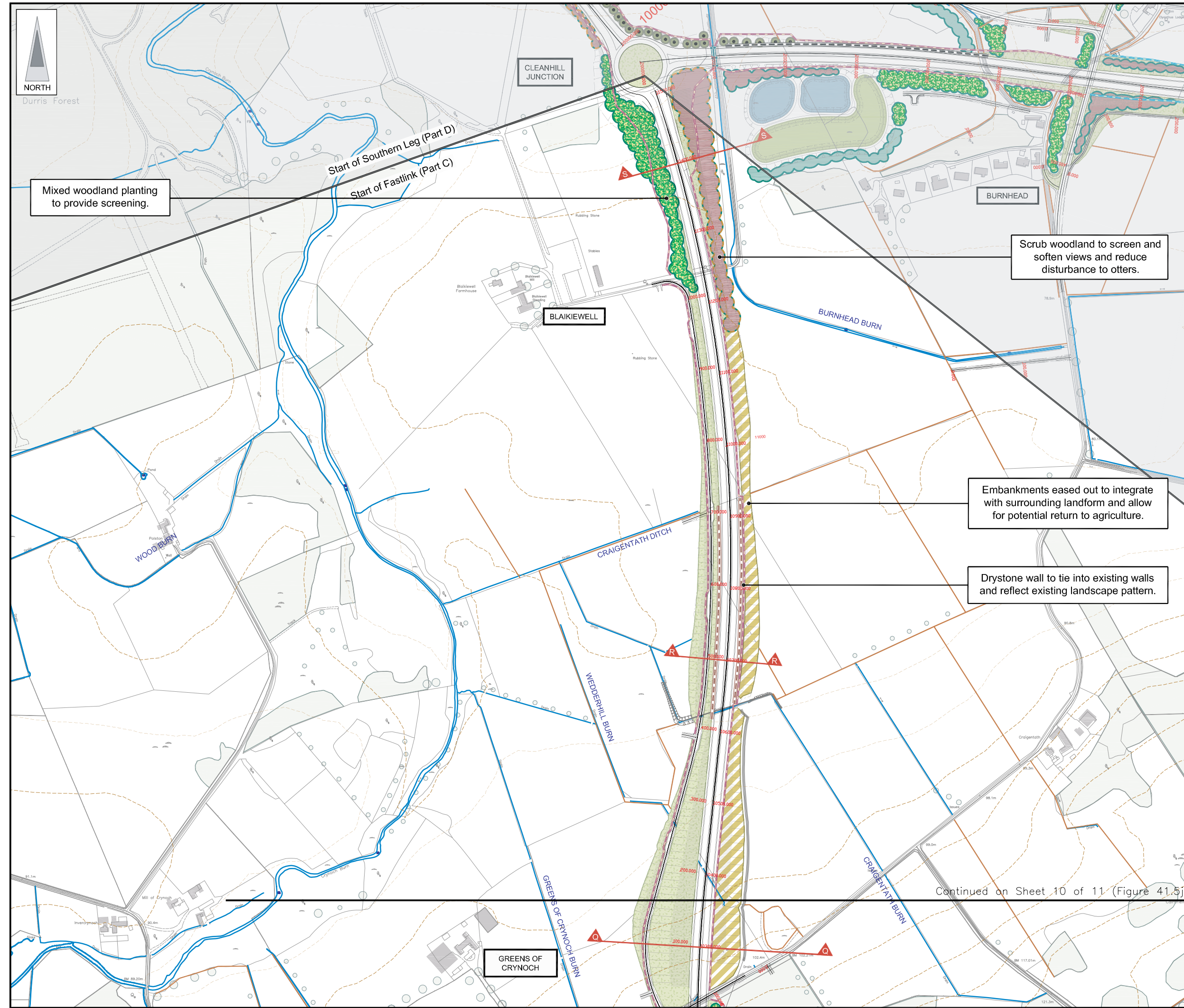
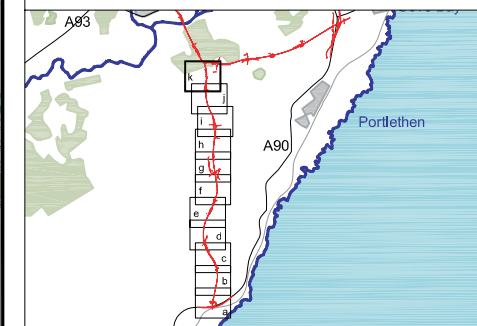
Ecological Mitigation Proposals

- Dry Mammal Underpass
- Wildlife Bridge
- Culvert / Bridge (see individual labels)
- Re-aligned Watercourse
- Otter Fence / Badger Fence
- Bat Box Provision
- Re-located Otter Holes

JE JACOBS
 95 Bothwell Street, Glasgow, G2 7HX, UK
 Tel: 0141 204 2511 Fax: 0141 226 3109
 www.jacobsbablie.com

Client	Aberdeen Western Peripheral Route		
Project	Aberdeen Western Peripheral Route Environmental Statement, Part D - Fastlink		
Title	Landscape and Ecological Mitigation Sheet 10 of 11		
Drawing Status	FINAL	Revisions	
JB No.	0010332	Checked	KS
Figure No.	FIGURE 41.5j	Date	July 2007
Scale	1:5,000 @ A3	Approved	SH
Drawn	AG	Checked	KS

FIGURE 41.5k



LEGEND

- Proposed Route (Engineering Profile 04/05/07)
 - Detention Basins & Treatment Ponds
Green - Detention Basin
Blue - Treatment Pond
 - Existing Vegetation / Retained Vegetation.
 - Existing Watercourses & Water Bodies
 - Existing Contours (5m intervals)
 - Drystone Wall
 - Cross Section Locations
 - BP / Shell Pipelines
- Planting Mitigation Proposals**
- Landscape Planting Proposals Only
 - Ecological Planting Proposals Only
 - Ecological & Landscape Planting
 - Mixed Woodland Planting
 - Coniferous Woodland Planting
 - Broadleaved Woodland Planting
 - Scrub Woodland Planting
 - Riparian Woodland
- Landscape Mitigation Proposals**
- Species Rich Grassland
 - Potential Rock Cut (sown with pockets of native seed)
 - Potential to Return to Agriculture
 - Feathered Tree Planting (Groups of 10 Min)
 - Extra Heavy Standard Trees/Standard Trees
 - Hedgerow
 - Proposed Drystone Wall
 - Proposed Noise Barrier
- Ecological Mitigation Proposals**
- Dry Mammal Underpass
 - Wildlife Bridge
 - Culvert / Bridge (see individual labels)
 - Re-aligned Watercourse
 - Otter Fence / Badger Fence
 - Bat Box Provision
 - Re-located Otter Holts

JE JACOBS
 95 Bothwell Street, Glasgow, G2 7HX, UK
 Tel: 0141 204 2511 Fax: 0141 226 3109
 www.jacobsbablie.com

Client	Aberdeen Western Peripheral Route		
Project	Aberdeen Western Peripheral Route Environmental Statement, Part D - Fastlink		
Title	Landscape and Ecological Mitigation Sheet 11 of 11		
Drawing Status	FINAL		
JB No.	0010332		
Figure No.	FIGURE 41.5k	Revisions	
Scale	1:5,000 @ A3	Date	July 2007
Drawn	AG	Checked	KS
		Approved	SH