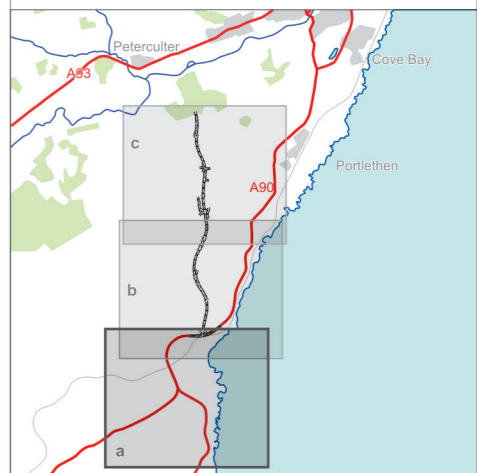
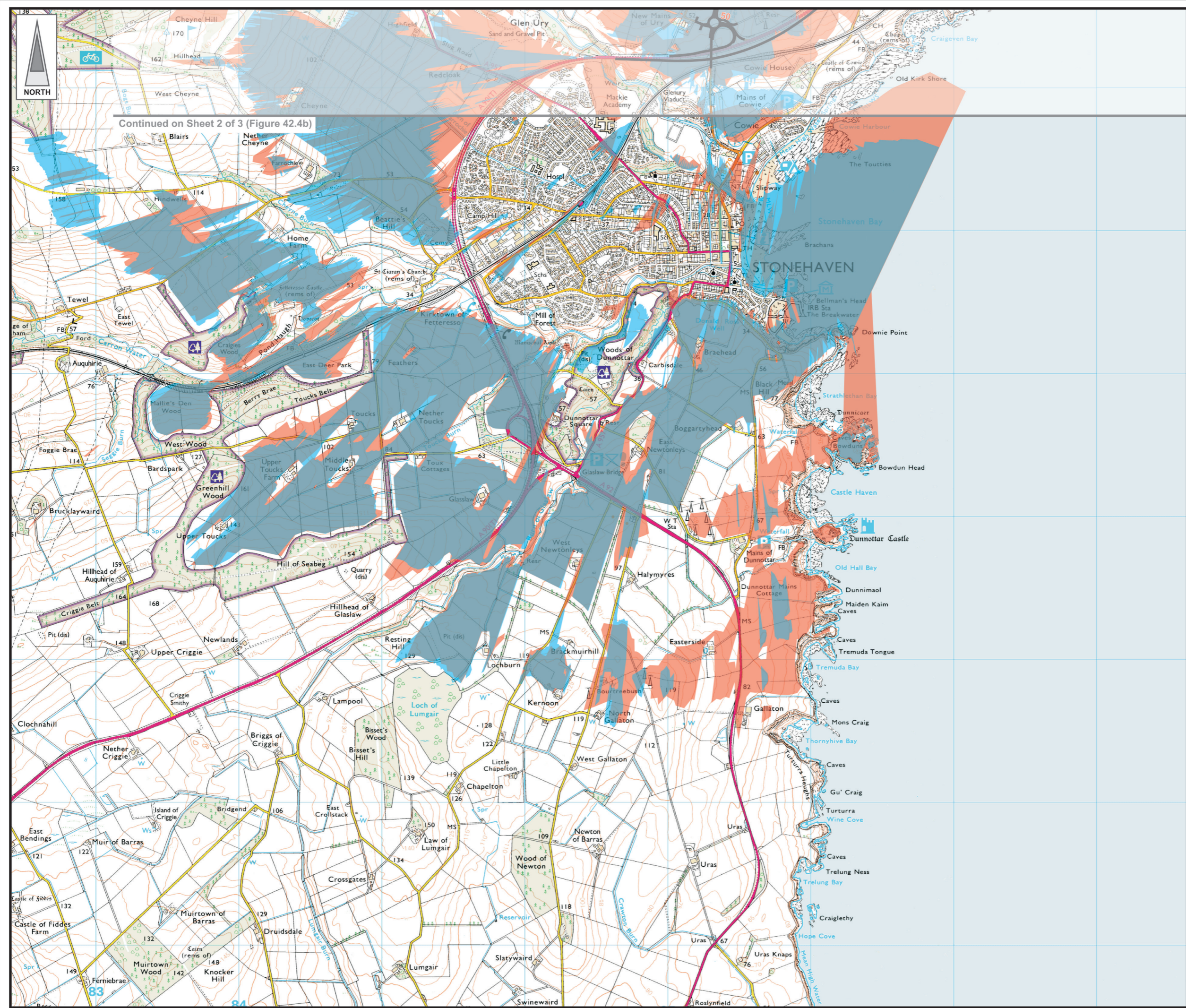






**FIGURE 42.4a**




**LEGEND**

-  Proposed Route  
(Engineering Profile 04/05/07)
-  Daytime Visual Envelope
-  Nighttime Visual Envelope
-  Day and Night Visual Envelope

Rev	Date	Purpose of Revision	Drwn	Chkd	Appd

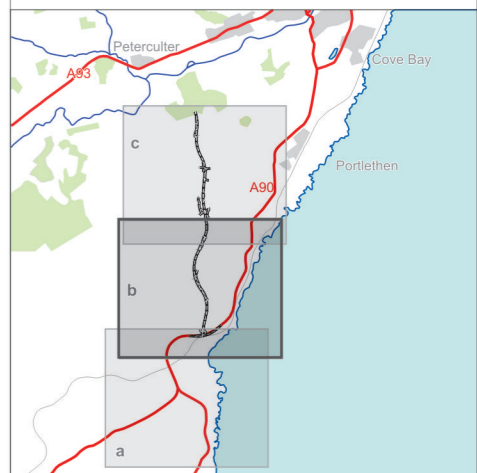
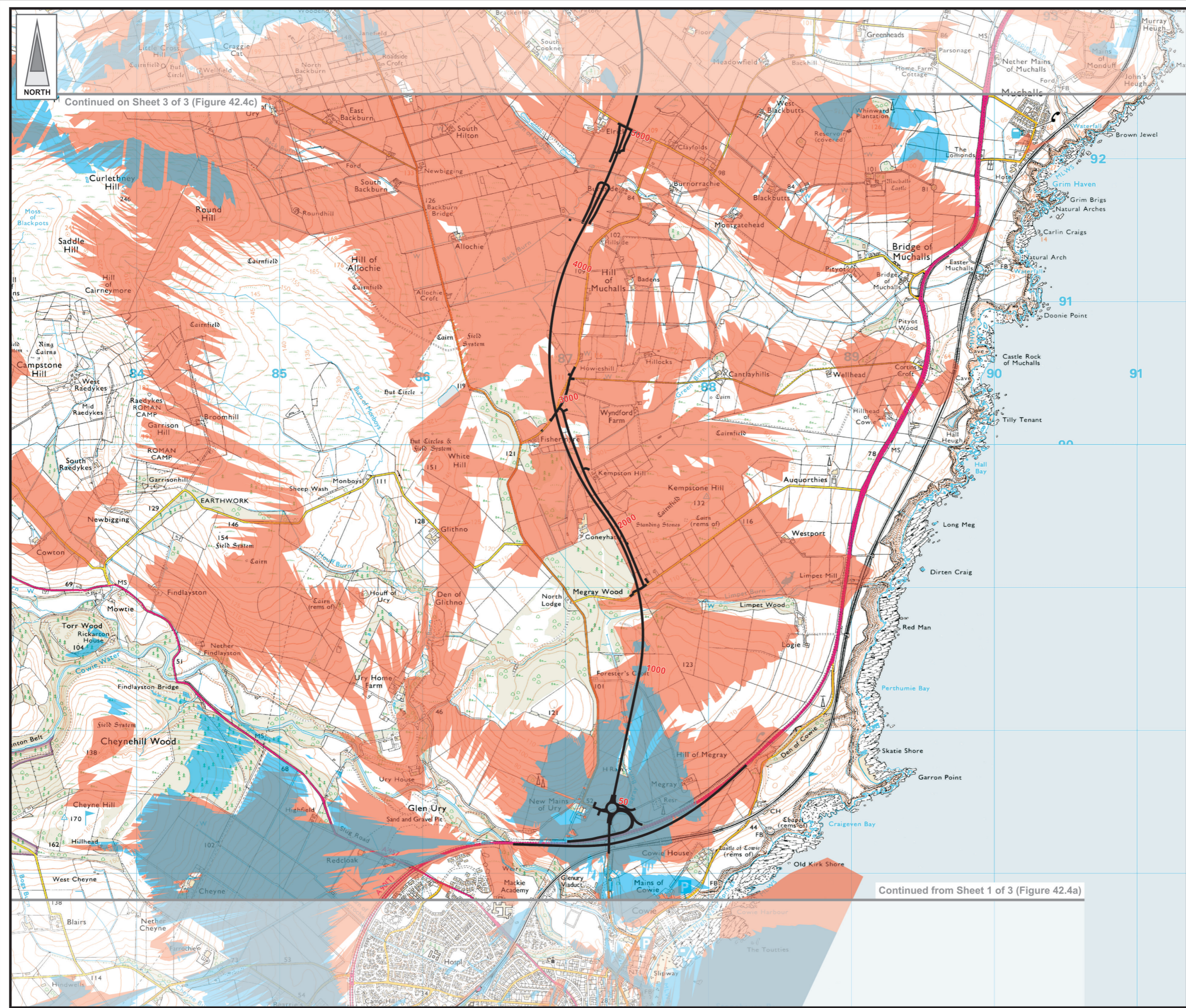
**JE JACOBS**  
 95 Bothwell Street, Glasgow, G2 7HX, UK  
 Tel: 0141 204 2511 Fax: 0141 226 3109  
 www.jacobsabtie.com

Client					
Project	<b>Aberdeen Western Peripheral Route</b> Environmental Statement, Part D - Fastlink				
Title	<b>Theoretical Visual Envelope Map</b> (Winter Year of Opening - Day and Night) Sheet 1 of 3				





Drawing Status	FINAL				
JB No.	0010332				
Figure No.	<b>FIGURE 42.4a</b>				
Scale	1:25,000				
Drawn	RB	Checked	LS	Approved	SH
Date	July 2007				

This map is based on Ordnance Survey material with the permission of Ordnance Survey on behalf of the controller of Her Majesty's Stationery Office © Crown copyright. Unauthorised reproduction infringes Crown copyright and may lead to prosecution or civil proceedings. Aberdeen City Council, 100023401 (2007).  
 This drawing is not to be used in whole or part other than for the intended purpose and project as defined on this drawing. Refer to the contract for full terms and conditions. Maps produced by Jacobs UK Ltd. This map should NOT be rescaled. Copyright reserved.

**FIGURE 42.4b**



**LEGEND**

-  Proposed Route  
(Engineering Profile 04/05/07)
-  Daytime Visual Envelope
-  Nighttime Visual Envelope
-  Day and Night Visual Envelope

Rev	Date	Purpose of Revision	Drwn	Chkd	Appd

**JE JACOBS**  
 95 Bothwell Street, Glasgow, G2 7HX, UK  
 Tel: 0141 204 2511 Fax: 0141 226 3109  
 www.jacobsbabtie.com

Client: **Aberdeen Western Peripheral Route**

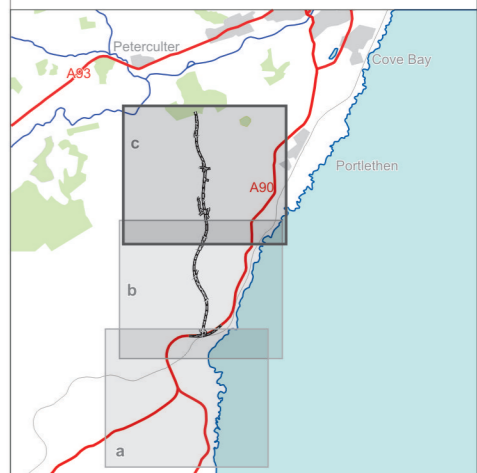
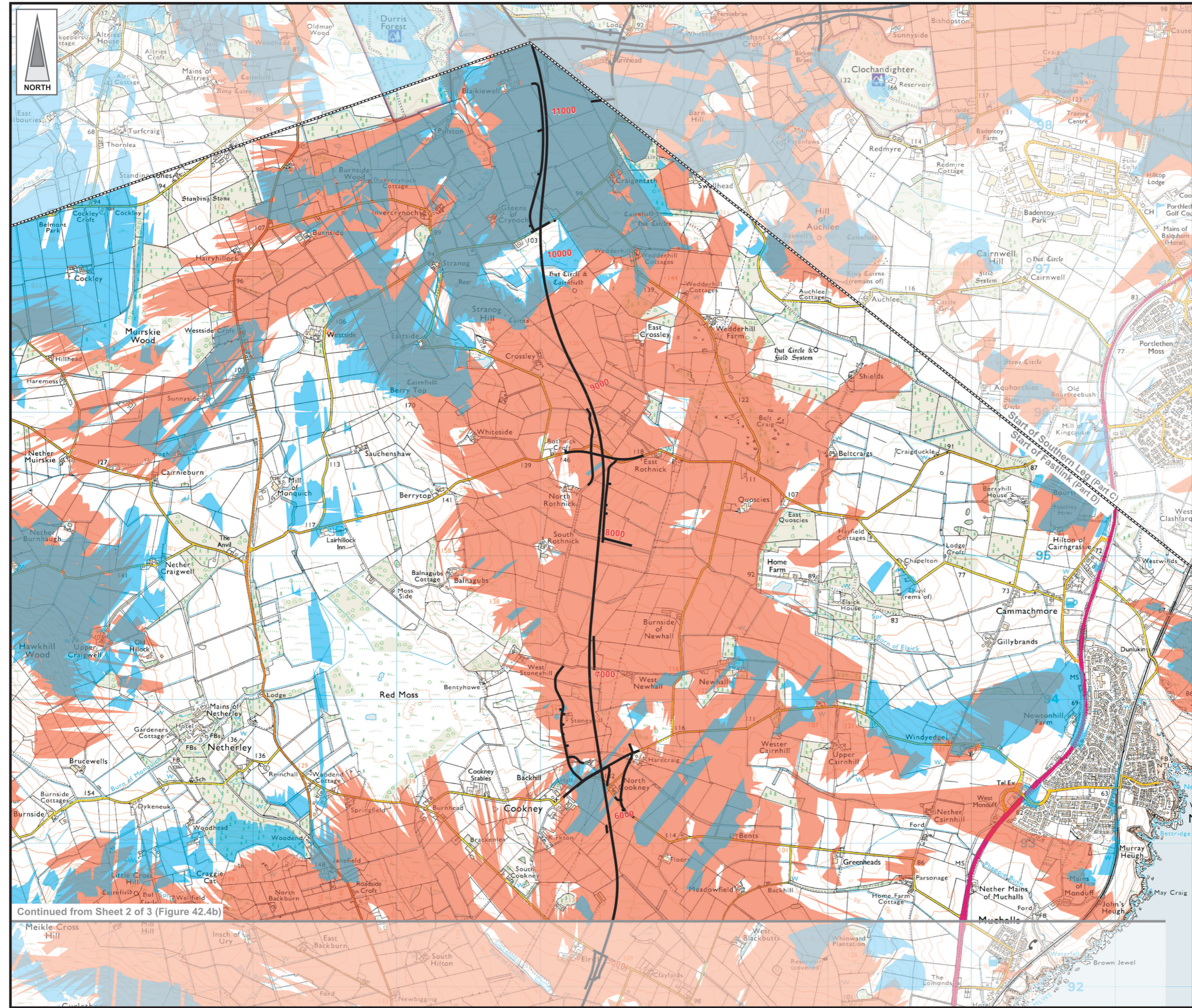
Project: **Aberdeen Western Peripheral Route Environmental Statement, Part D - Fastlink**

Title: **Theoretical Visual Envelope Map (Winter Year of Opening - Day and Night) Sheet 2 of 3**





Drawing Status	FINAL	Revisions	
JB No.	0010332	Date	July 2007
Figure No.	<b>FIGURE 42.4b</b>	Approved	SH
Scale	1:25,000	Checked	LS
Drawn	RB		

This map is based on Ordnance Survey material with the permission of Ordnance Survey on behalf of the controller of Her Majesty's Stationery Office © Crown copyright. Unauthorised reproduction infringes Crown copyright and may lead to prosecution or civil proceedings. Aberdeen City Council, 100023401 (2007).  
 This drawing is not to be used in whole or part other than for the intended purpose and project as defined on this drawing. Refer to the contract for full terms and conditions. Maps produced by Jacobs UK Ltd. This map should NOT be rescaled. Copyright reserved.

**FIGURE 42.4c**



**LEGEND**

-  Proposed Route  
(Engineering Profile 04/05/07)
-  Daytime Visual Envelope
-  Nighttime Visual Envelope
-  Day and Night Visual Envelope

Continued from Sheet 2 of 3 (Figure 42.4b)



Rev	Date	Purpose of Revision	Drwn	Chkd	Appd

**JE JACOBS**  
 95 Bothwell Street, Glasgow, G2 7HX, UK  
 Tel: 0141 204 2511 Fax: 0141 226 3109  
 www.jacobsbattle.com

Client	Aberdeen Western Peripheral Route				
Project	Aberdeen Western Peripheral Route Environmental Statement, Part D - Fastlink				
Title	Theoretical Visual Envelope Map (Winter Year of Opening - Day and Night) Sheet 3 of 3				

Drawing Status	FINAL				
JB No.	0010332				
Figure No.	FIGURE 42.4c				
Scale	1:25,000				
Drawn	RB	Checked	LS	Approved	SH
Date	July 2007				

This map is based on Ordnance Survey material with the permission of Ordnance Survey on behalf of the controller of Her Majesty's Stationery Office © Crown copyright. Unauthorised reproduction infringes Crown copyright and may lead to prosecution or civil proceedings. Aberdeen City Council, 100023401 (2007).  
 This drawing is not to be used in whole or part other than for the intended purpose and project as defined on this drawing. Refer to the contract for full terms and conditions. Maps produced by Jacobs UK Ltd. This map should NOT be rescaled. Copyright reserved.