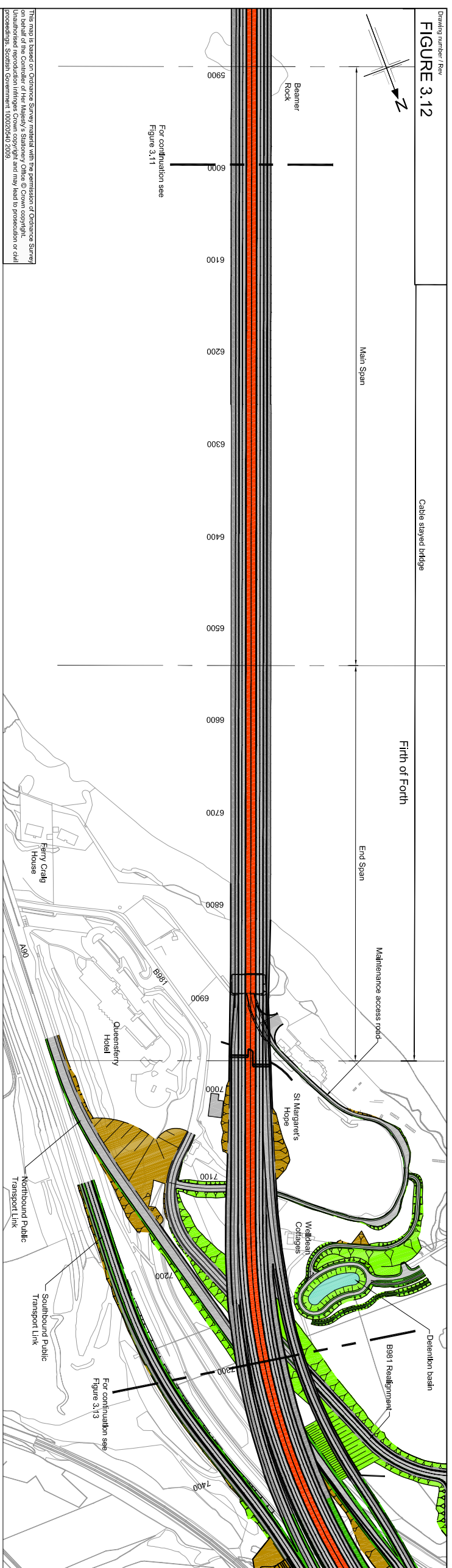
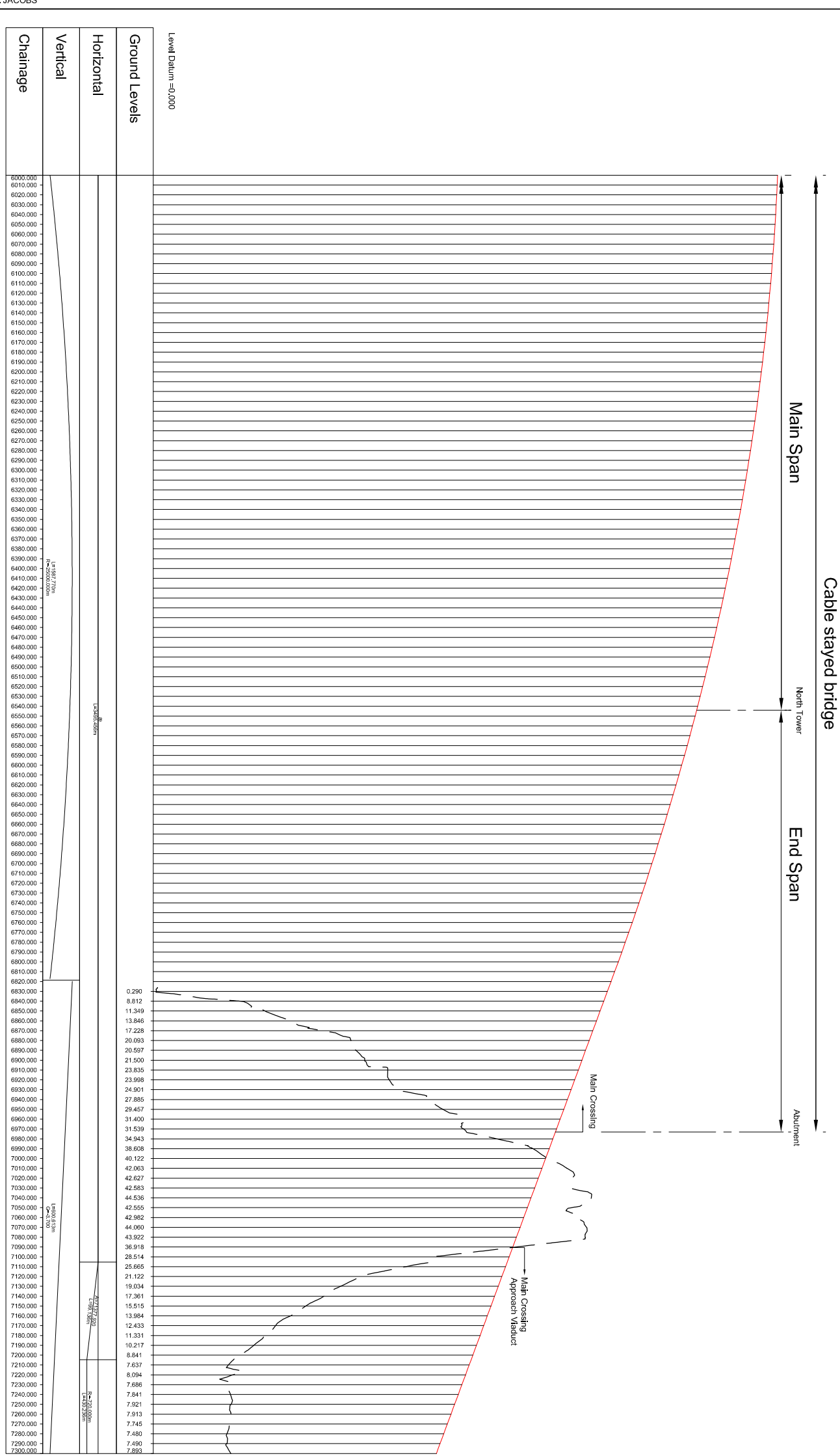


- Proposed Carriageway
- Verge
- Embankment
- Cutting

- Long section
- Proposed Design Level



This map is based on Ordnance Survey material with the permission of Ordnance Survey on behalf of the Controller of Her Majesty's Stationery Office © Crown copyright. Unauthorised reproduction infringes Crown copyright and may lead to prosecution or civil proceedings. Scottish Government 100272540 2009



Level Datum =0,000	Stationing
6000.000	6000+000
6010.000	6010+000
6020.000	6020+000
6030.000	6030+000
6040.000	6040+000
6050.000	6050+000
6060.000	6060+000
6070.000	6070+000
6080.000	6080+000
6090.000	6090+000
6100.000	6100+000
6110.000	6110+000
6120.000	6120+000
6130.000	6130+000
6140.000	6140+000
6150.000	6150+000
6160.000	6160+000
6170.000	6170+000
6180.000	6180+000
6190.000	6190+000
6200.000	6200+000
6210.000	6210+000
6220.000	6220+000
6230.000	6230+000
6240.000	6240+000
6250.000	6250+000
6260.000	6260+000
6270.000	6270+000
6280.000	6280+000
6290.000	6290+000
6300.000	6300+000
6310.000	6310+000
6320.000	6320+000
6330.000	6330+000
6340.000	6340+000
6350.000	6350+000
6360.000	6360+000
6370.000	6370+000
6380.000	6380+000
6390.000	6390+000
6400.000	6400+000
6410.000	6410+000
6420.000	6420+000
6430.000	6430+000
6440.000	6440+000
6450.000	6450+000
6460.000	6460+000
6470.000	6470+000
6480.000	6480+000
6490.000	6490+000
6500.000	6500+000
6510.000	6510+000
6520.000	6520+000
6530.000	6530+000
6540.000	6540+000
6550.000	6550+000
6560.000	6560+000
6570.000	6570+000
6580.000	6580+000
6590.000	6590+000
6600.000	6600+000
6610.000	6610+000
6620.000	6620+000
6630.000	6630+000
6640.000	6640+000
6650.000	6650+000
6660.000	6660+000
6670.000	6670+000
6680.000	6680+000
6690.000	6690+000
6700.000	6700+000
6710.000	6710+000
6720.000	6720+000
6730.000	6730+000
6740.000	6740+000
6750.000	6750+000
6760.000	6760+000
6770.000	6770+000
6780.000	6780+000
6790.000	6790+000
6800.000	6800+000
6810.000	6810+000
6820.000	6820+000
6830.000	6830+000
6840.000	6840+000
6850.000	6850+000
6860.000	6860+000
6870.000	6870+000
6880.000	6880+000
6890.000	6890+000
6900.000	6900+000
6910.000	6910+000
6920.000	6920+000
6930.000	6930+000
6940.000	6940+000
6950.000	6950+000
6960.000	6960+000
6970.000	6970+000
6980.000	6980+000
6990.000	6990+000
7000.000	7000+000
7010.000	7010+000
7020.000	7020+000
7030.000	7030+000
7040.000	7040+000
7050.000	7050+000
7060.000	7060+000
7070.000	7070+000
7080.000	7080+000
7090.000	7090+000
7100.000	7100+000
7110.000	7110+000
7120.000	7120+000
7130.000	7130+000
7140.000	7140+000
7150.000	7150+000
7160.000	7160+000
7170.000	7170+000
7180.000	7180+000
7190.000	7190+000
7200.000	7200+000
7210.000	7210+000
7220.000	7220+000
7230.000	7230+000
7240.000	7240+000
7250.000	7250+000
7260.000	7260+000
7270.000	7270+000
7280.000	7280+000
7290.000	7290+000
7300.000	7300+000

North Mainline Long Section Ch 6000 to Ch 7300  
Scale 1:5,000 Horizontal, 1:500 Vertical

Client: Transport Scotland

Project: FORTH REPLACEMENT CROSSING

Client: The Scottish Government

Project: JACOBS ARUP

Drawing title: DMRB STAGE 3 REPORT NORTH OF THE FORTH PLAN AND LONG SECTION SHEET 1 OF 4

Scale: 1:5000 @ A3

Drawing number: FIGURE 3.12

FOR INFORMATION

DO NOT SCALE

Rev: 0

This drawing is not to be used in whole or part other than for the intended purpose and project as defined on this drawing. Refer to the contract for full terms and conditions.