

A90/A96 Haudagain Improvement Scheme



Construction

Construction of the scheme will involve the following main activities:

- Demolition of properties to allow construction of the new road to progress;
- Construction of a detention basin;
- Diversion of existing utilities;
- Implementation of environmental mitigation measures, including landscape planting and acoustic barriers; and
- Works under traffic management may be carried out during night time or weekend periods to minimise disruption to the travelling public. Appropriate noise levels for such works will be agreed with Aberdeen City Council as required.



Draft Orders

Copies of the Draft Orders and the Environmental Statement are available for viewing at this exhibition. These are statutory documents that define the line of the proposed road and associated improvements. Copies of the Non-Technical Summary of the Environmental Statement are available free of charge.

The Draft Orders and the Environmental Statement are also available to view electronically on Transport Scotland's website: www.transportscotland.gov.uk/project/a90a96-haudagain-improvement

Hard copies are available for inspection at the following locations:

Aberdeen City Council Offices

Marischal College, Broad Street, Aberdeen, AB10 1AB | Mon to Fri: 09:00 to 16:00

2a Logie Place, Aberdeen, AB16 7TP | Mon to Fri: 09:00 to 16:00

Mastrick Access Point, Spey Road, Mastrick, Aberdeen, AB16 6SH | Mon to Fri: 09:00 to 16:00

Transport Scotland

Buchanan House, 58 Port Dundas Road, Glasgow, G4 0HF | Mon to Thurs: 08:30 to 17:00 | Fri: 08:30 to 16:30

What happens next?

This exhibition is being held following publication of the Draft Orders and the Environmental Statement on 26 June 2015.

The statutory six-week period for objections or representations ends on **7 August 2015**.

Following completion of that period, should objections to the Draft Orders be received, which cannot be resolved, there may be the need for a Public Local Inquiry before the scheme can proceed.

A comment form is available at this exhibition for any feedback you wish to provide.

Construction is anticipated to commence in late 2017 following completion of the AWPR/B-T project with the work expected to take around two years. This is subject to precise programming details which will be known once contractors have been appointed to construct the scheme.

Further information

For more information on the proposed scheme, please visit the project page on Transport Scotland's website:

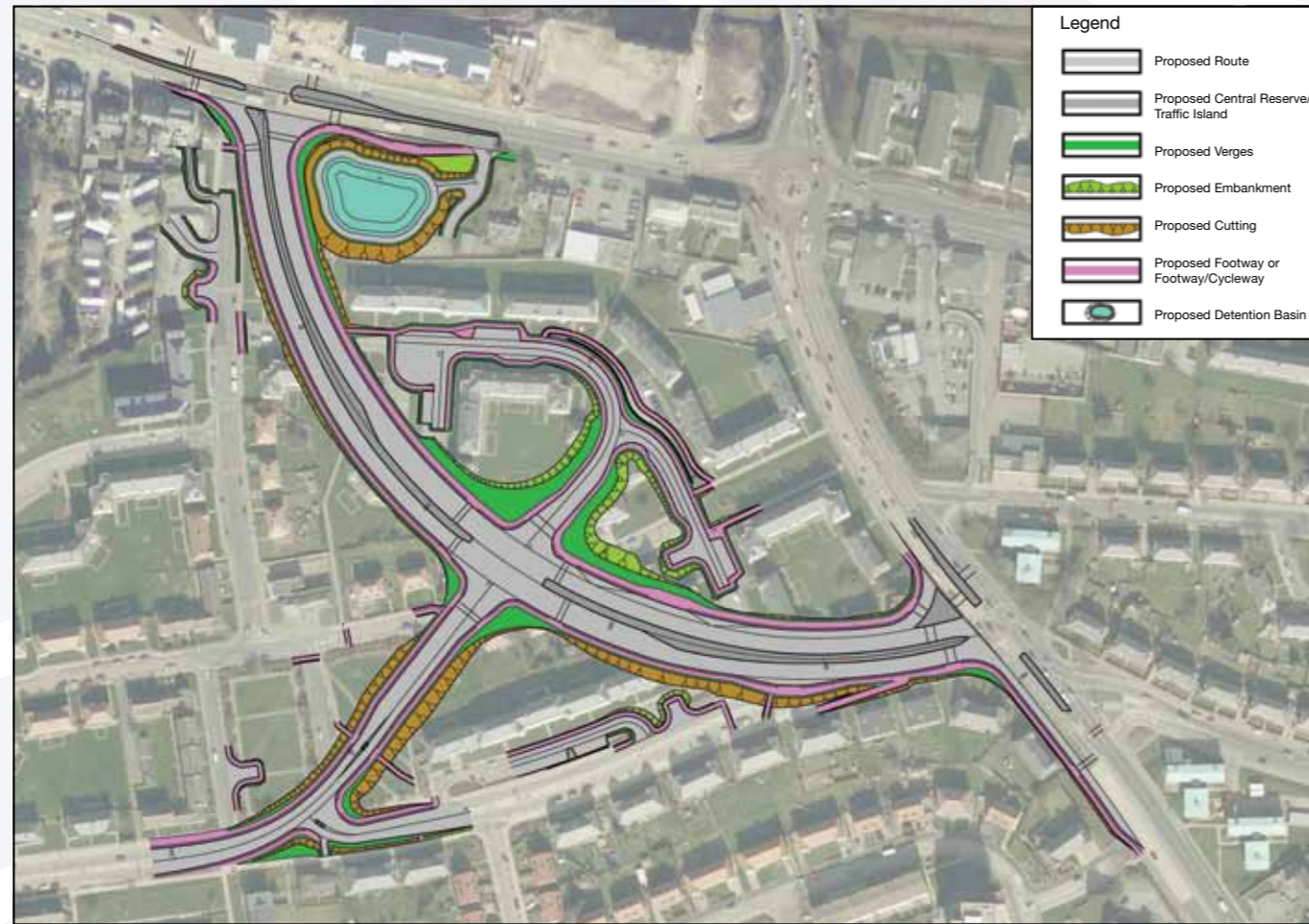
www.transportscotland.gov.uk/project/a90a96-haudagain-improvement

A90/A96 Haudagain Improvement Scheme



Draft Orders Public Exhibition July 2015

A90/A96 Haudagain Improvement Scheme



The proposed scheme

- A new 500m dual carriageway Link Road will be constructed between the A90(T) North Anderson Drive and the A96(T) Auchmill Road.
- Manor Drive will be closed at its northern junction with the A96(T), and Manor Avenue will also be closed at its eastern junction with the A90(T). New signalised T-junctions will be formed at these locations, providing the northern and southern tie-ins of the new link road.
- A signalised cross-roads junction will be formed approximately mid-way along the new link road, providing connections to Manor Avenue and Logie Avenue.
- Existing roads will be modified as necessary to accommodate the scheme, including provision of defined parking and turning facilities on stopped up roads. The scheme will also include provisions for cyclists and pedestrians.
- The drainage design for the scheme has been developed in accordance with Sustainable Drainage Systems (SUDS) guidance and will include a detention basin to store and treat surface water run-off from the road south of the A96(T).
- Construction of the scheme will require the demolition of a number of properties and the use of open space land. Replacement open space has been included within the proposals for the scheme, which has also been developed in consultation with Aberdeen City Council.

The environment

The design of the scheme has been informed by detailed environmental assessments, which have considered the biological, physical and historic environment, local communities and landowners, and the current or planned future use of the environment.

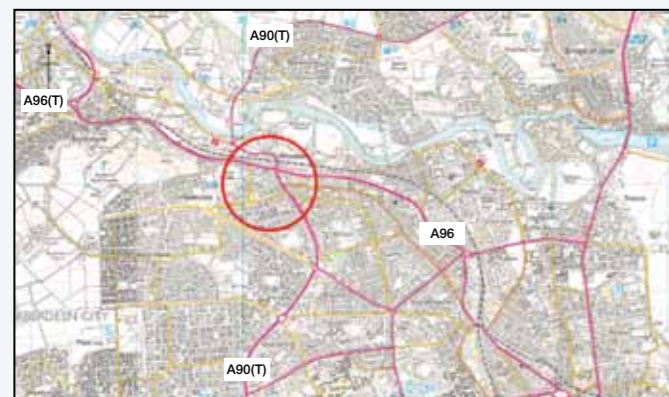
One of the main considerations has been the need to avoid or reduce potential for adverse effects on the environment. This included identifying mitigation measures for inclusion within the scheme proposals.

An Environmental Impact Assessment (EIA) of the proposals was undertaken, with environmental constraints and issues identified and incorporated into the decision-making process throughout the development of the scheme. Transport Scotland has published an Environmental Statement, which reports the findings of the EIA.

Introduction

This scheme involves an improvement at Haudagain roundabout, which is the junction between the A90 and A96 trunk roads. Under the scheme proposals, a new 500m long dual carriageway link road will be provided between the A90(T) south of Haudagain roundabout and the A96(T) west of Haudagain roundabout. New connections will be provided to the existing side road network as part of the scheme.

Following consultation with landowners and other bodies, the scheme design has now been developed to a stage where sufficient detail exists to establish land-take requirements and to progress the scheme through the statutory processes.



Need for the scheme

The A90/A96 Haudagain Roundabout is an important transport link, which is currently operating over its capacity, leading to congestion and unreliable journey times. This causes significant queues and delays to traffic on the approach roads.

The Scottish Government has committed to starting the construction of improvements to Haudagain once the Aberdeen Western Peripheral Route / Balmedie-Tipperty (AWPR/B-T) is completed, which is currently anticipated to be in late 2017.

Environmental design and mitigation

The proposed scheme has been designed to avoid or reduce potential adverse impacts on the environment by incorporating the following:

- Landscaping, including tree and hedge planting;
- Crossing points for pedestrians and cyclists;
- Shared footway/cycleways;
- Play park facilities;
- Open space provisions;
- Noise screening; and
- Treatment of road drainage.

