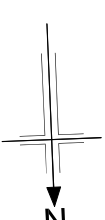


Redacted

Rocklea



Notes:

- The locations of private and publicly owned service and supply apparatus identified as existing, proposed, abandoned or temporary shall be shown on this drawing. The party responsible and information only for and on this drawing is given to the completeness or accuracy of this information.
- Prior to carrying out work in any part of the site, the Contractor shall be responsible for locating all existing service and supply apparatus, and agreeing the details of any required diversion and protection measures with the relevant Company or Landowner.
- For details of existing undertaker apparatus refer to drawing series B1033200/CD/2700/EX/##.

Legend:

- Land made available
 - SSED #/#/# Contract Reference
 - (##) Undertaker Reference
- Existing Apparatus:**
- OH 33 — 33kV Overhead Line
 - UG 33 — 33kV Underground Cable
 - OH 11 — 11kV Overhead Line
 - UG 11 — 11kV Underground Cable
 - OH 415 — 415V Overhead Line
 - UG 415 — 415V Underground Cable
 - Underground Cable Joint / Box
 - Overhead Line Pole / Switch / Transformer

Proposed Apparatus:

- P-OH33 — 33kV Overhead Line
- P-UG33 — 33kV Underground Cable
- P-OH11 — 11kV Overhead Line
- P-UG11 — 11kV Underground Cable
- P-OH415 — 415V Overhead Line
- P-UG415 — 415V Underground Cable

Abandoned Apparatus:

- A-OH33 — 33kV Overhead Line
- A-UG33 — 33kV Underground Cable
- A-OH11 — 11kV Overhead Line
- A-UG11 — 11kV Underground Cable
- A-OH415 — 415V Overhead Line
- A-UG415 — 415V Underground Cable

Temporary Apparatus:

- T-OH33 — 33kV Overhead Line
- T-UG33 — 33kV Underground Cable
- T-OH11 — 11kV Overhead Line
- T-UG11 — 11kV Underground Cable
- T-OH415 — 415V Overhead Line
- T-UG415 — 415V Underground Cable

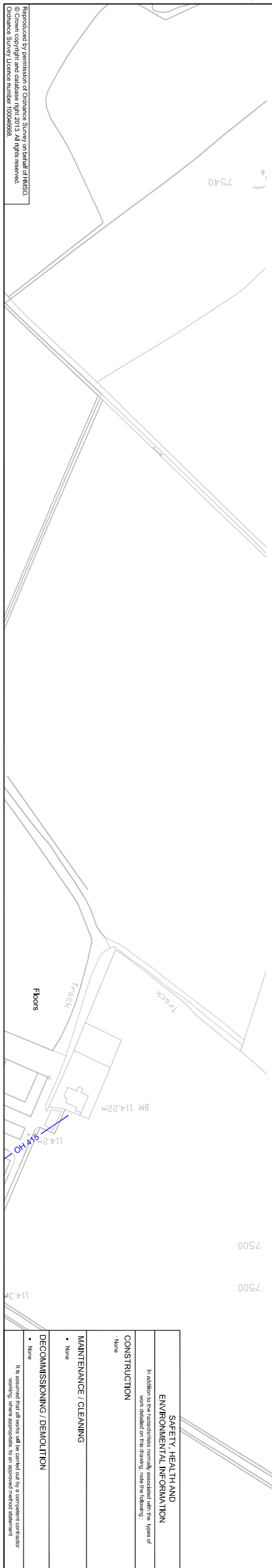
Rev.	Rev. Date	Purpose of revision	Drawn	Checked	Rev'd	Appr'd
1	30/06/13	Final format colours updated	BA	CRP	BM	JAK
0	14/06/13	For dialogue	BA	CRP	BM	JAK

JACOBS
 95 Bowling St. Glasgow, G2 7JX
 Tel: +44(0)141 243 3000 Fax: +44(0)141 228 3109
 www.jacobs.com

berdeen Western Peripheral Route
 Balmudie-Tipperary

INDICATIVE DESIGN
SCOTTISH & SOUTHERN ENERGY
DISTRIBUTION
SHEET 8 OF 71

FOR DIALOGUE
 Scale: 1:1,250 @ A1
 DO NOT SCALE
 Drawing number: B1033200
 Jacobs No.: B1033200
 Drawing status: DO NOT SCALE
 Drawing title: INDICATIVE DESIGN SCOTTISH & SOUTHERN ENERGY DISTRIBUTION SHEET 8 OF 71
 This drawing is not to be used in whole or part other than for the intended purpose and project as defined on this drawing. Refer to the contract for full terms and conditions.



Reproduced by permission of Ordnance Survey on behalf of HMSO.
 © Crown copyright and database right 2013. All rights reserved.
 Ordnance Survey Licence number: 100035555