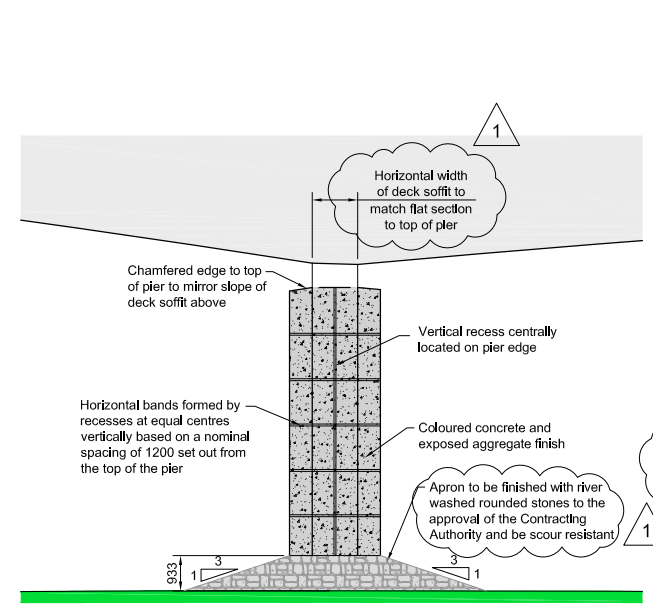
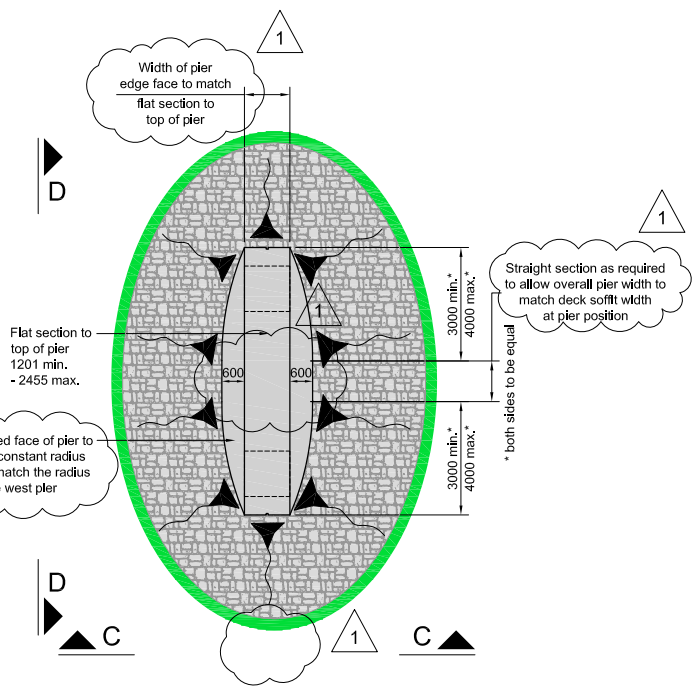


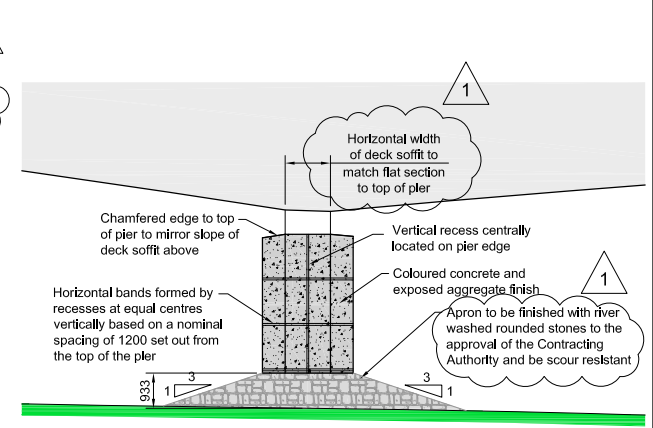
Plan on West Pier
 Scale 1:100



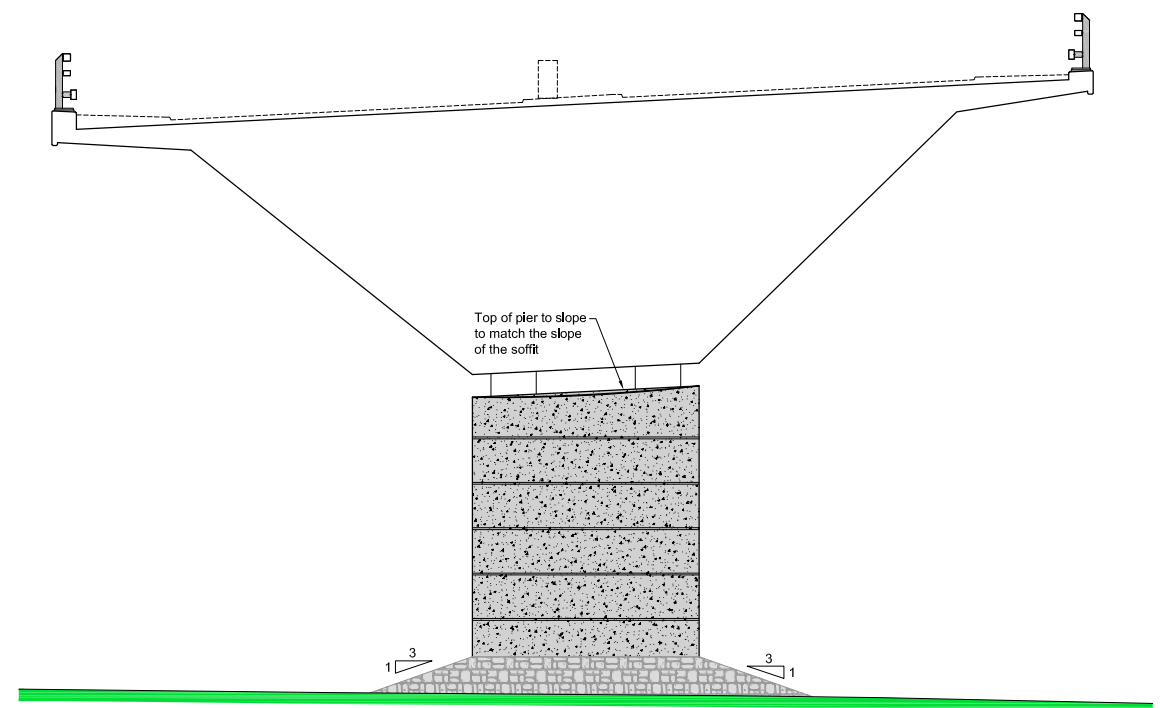
Elevation A-A
 Scale 1:100



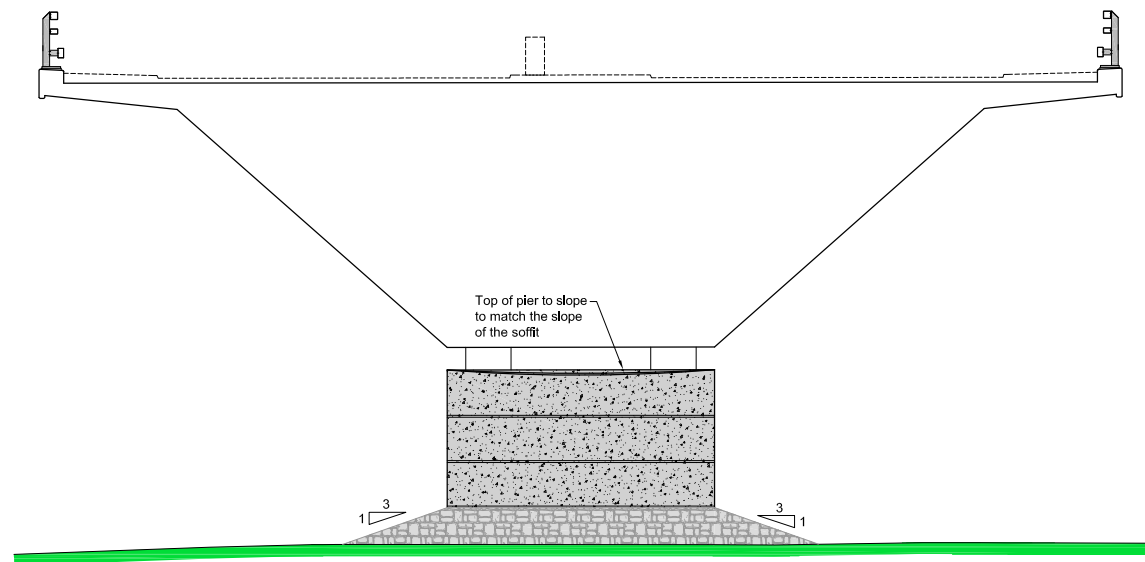
Plan on East Pier
 Scale 1:100



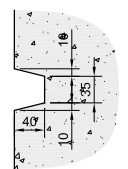
Elevation C-C
 Scale 1:100



Sectional Elevation B-B
 Scale 1:100



Sectional Elevation D-D
 Scale 1:100



Typical Recess Detail
 Scale 1:5

- Notes :
- All dimensions are in millimetres unless noted otherwise.
 - All dimensions shown meet the requirements of the New Works. Any deviation from these will require additional aesthetic consideration by the Contracting Authority.

1	21/1/2014	Changes clouded.	BA	DG	DG	JML
0	17/1/2014	First Issue	BA	DG	DG	JML
Rev	Rev. Date	Purpose of revision	Drawn	Checked	Rev'd	Approved

JACOBS
 95 Bothwell St. Glasgow, G2 7HX
 Tel:+44(0)141 243 8000 Fax:+44(0)141 228 3109
 www.jacobs.com

Aberdeen Western Peripheral Route
 Balmedie-Tipperty

Drawing title
**PS46 - RIVER DON CROSSING
 3 SPAN OPTION
 ALTERNATIVE PIER OPTION 1**

Drawing status
FOR DIALOGUE

Scale AS SHOWN @ A1 DO NOT SCALE

Jacobs No. B1033200

Drawing number **B1033200/CD/DEF/ST/023** Rev **1**

This drawing is not to be used in whole or part other than for the intended purpose and project as defined on this drawing. Refer to the contract for full terms and conditions.