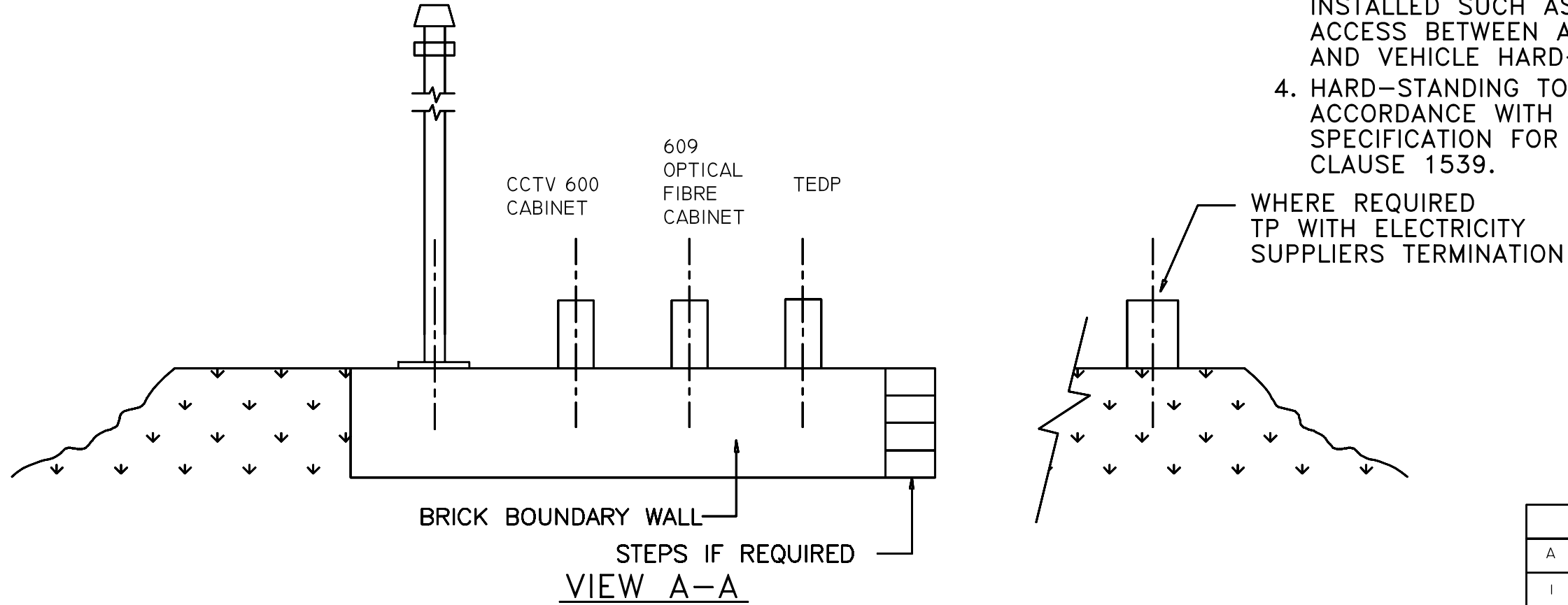


**NOTE**

1. THIS OVERALL SITE DIMENSION MAY BE REDUCED WHERE FEWER CABINETS ARE INSTALLED. DRAWING SHOWS THE MAXIMUM NUMBER OF CABINETS NORMALLY REQUIRED.
2. WHERE STEPS AND HANDRAILS ARE INSTALLED THESE SHALL CONFORM TO NDX1070-01 AND NDX1070-02 RESPECTIVELY.
3. WALKWAYS, PATHS AND PAVING SHALL BE INSTALLED SUCH AS TO PROVIDE FOR SAFE ACCESS BETWEEN ALL EQUIPMENT, CHAMBERS AND VEHICLE HARD-STANDING.
4. HARD-STANDING TO BE INSTALLED IN ACCORDANCE WITH NDX1072-00 AND SPECIFICATION FOR HIGHWAY WORKS CLAUSE 1539.

**SITE LAYOUT OVERVIEW**



This drawing was generated on computer and must not be manually updated

TITLE TYPICAL CAMERA SITE - CABINET LAYOUT

A	VARIOUS. SEE AMMENDMENT SHEET	GC 05/02/06
I	FIRST ISSUE	BD 19/03/02
ISSUE	AMENDMENTS	APPD/DATE
DRN	C.S.G.	CHKD B.D.
DATE	05.02.02	DATE 09.02.02
DRG. NO.	NDX1010-00ly	
		SHT. NO. 1 of 4

ORIGINAL DRAWING SIZE: 297 x 420  
 ALL DIMENSIONS ARE IN MM  
 TOLERANCE ±1 UNLESS OTHERWISE STATED  
 THIRD ANGLE PROJECTION DO NOT SCALE