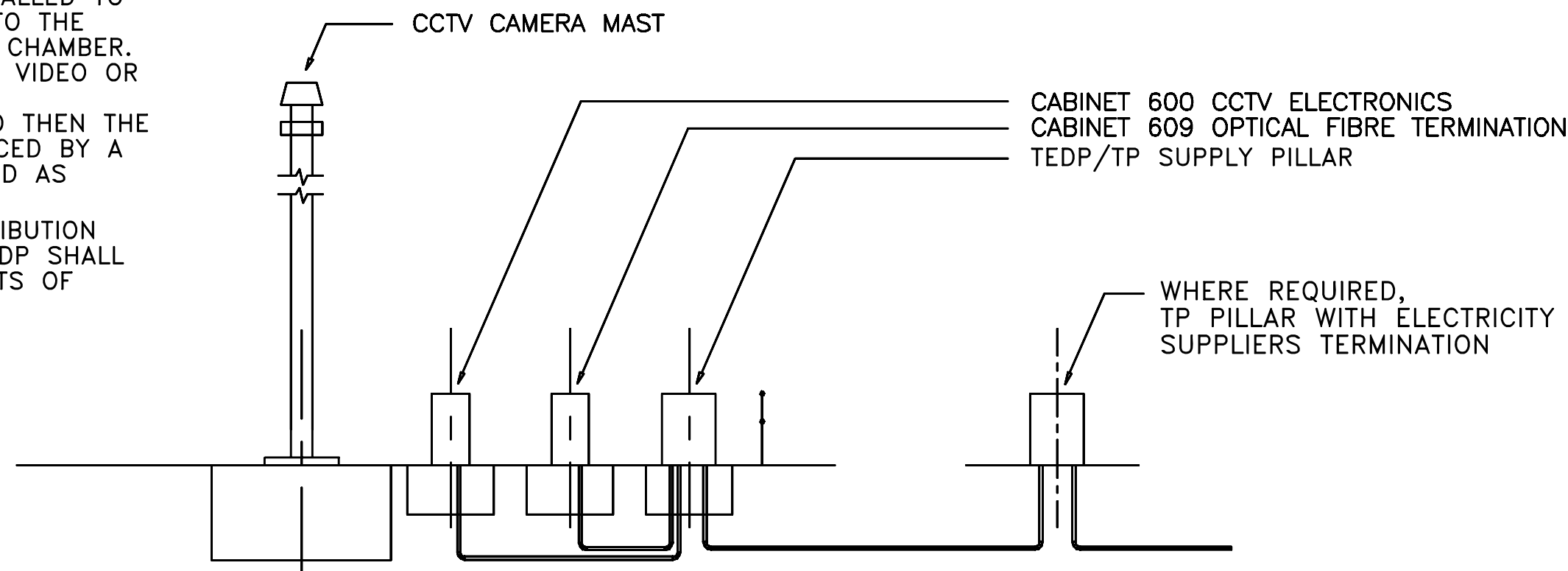


COMMUNICATIONS DISTRIBUTION



POWER DISTRIBUTION

NOTES

1. ALL POWER DUCTS AS PER SHW 1500 SERIES
2. ALL COMMUNICATIONS DUCTS AS PER SHW 1500 SERIES
3. DUCTS SHOWN IN DRAWING ARE INDICATIVE ONLY, SITE SPECIFIC DUCT ARRANGEMENTS IN ACCORDANCE WITH NDX1002-00 AND THE SCOTTISH SERIES 1500.
4. CHAMBERS SHALL BE INSTALLED AS REQUIRED IN ACCORDANCE WITH THE SCOTTISH SERIES 1500.
5. WHERE CCTV VIDEO USES A NETWORK SERVICE PROVIDER THE COMMUNICATIONS CABLE SHALL BE TERMINATED IN THE CCTV 600 CABINET. IN ADDITION, A SUITABLE DUCT SHALL BE INSTALLED TO LINK THE CCTV 600 CABINET TO THE NETWORK SERVICE PROVIDER'S CHAMBER. WHERE RESTRICTED BANDWIDTH VIDEO OR SIMILAR USING A COPPER WIRE COMMUNICATIONS LINK IS USED THEN THE 609 CABINET SHALL BE REPLACED BY A TB13 CTP GENERALLY INSTALLED AS NDX1034-03.
6. ELECTRICAL SUPPLY AND DISTRIBUTION CABINETS TYPE TP AND/OR TEDP SHALL CONFORM TO THE REQUIREMENTS OF NDX1011-00.

This drawing was generated on computer and must not be manually updated

TITLE TYPICAL CAMERA SITE - DUCT LAYOUT

A	VARIOUS, SEE AMENDMENTS SHEET	GC 05/02/06
I	FIRST ISSUE	BD 19/03/02
ISSUE	AMENDMENTS	APPD/DATE
DRN	C.S.G.	CHKD B.D.
DATE	05.02.02	DATE 09.02.02
DRG. NO.	NDX1010-00ly	
		SHT. NO. 2 of 4

ORIGINAL DRAWING SIZE: 297 x 420
 ALL DIMENSIONS ARE IN MM
 TOLERANCE ±1 UNLESS OTHERWISE STATED
 THIRD ANGLE PROJECTION DO NOT SCALE

SCOTTISH EXECUTIVE
 Traffic Controller Unit,
 EDINBURGH, EH6 6QQ

NADICS
 www.nadics.org.uk