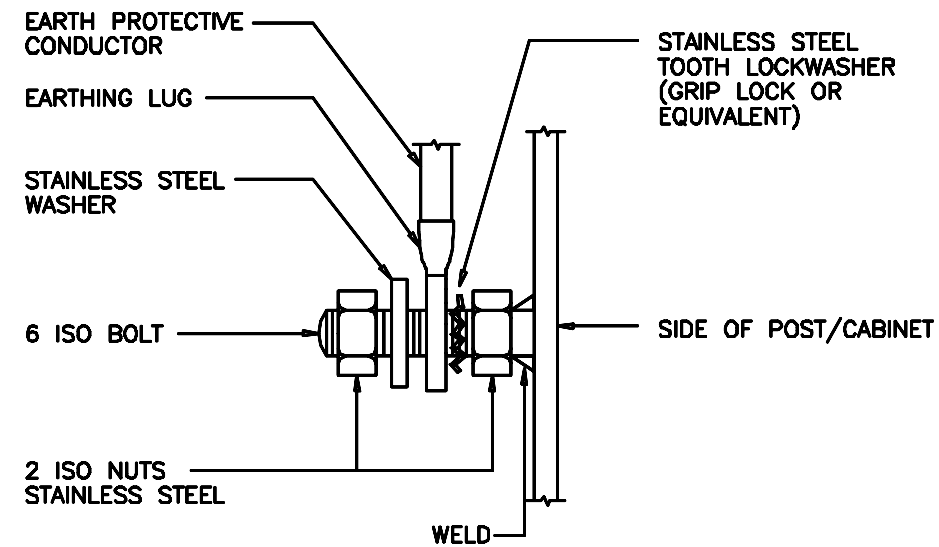
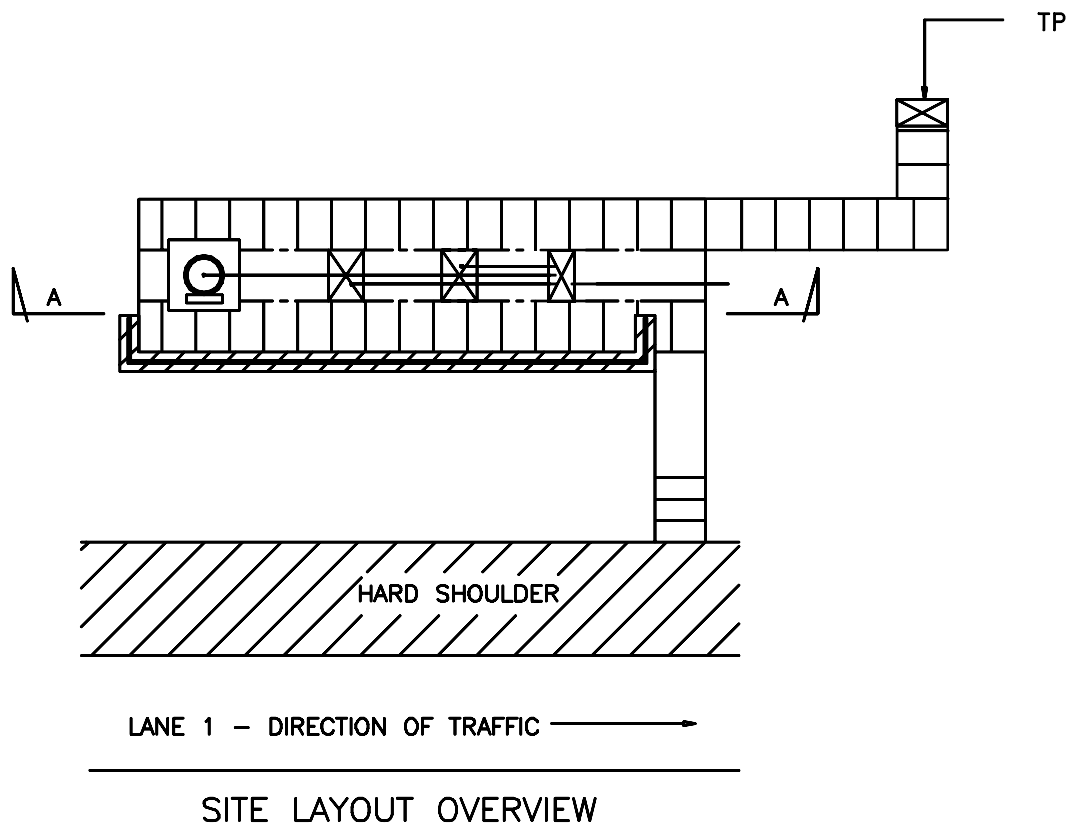


**SECTION A-A**



**DETAIL 1**

**NOTES:**

1. THE BONDING ARRANGEMENT, THE SIZE OF BONDING CONDUCTORS AND ALL ASPECTS OF THE ELECTRICAL INSTALLATION MUST COMPLY WITH BS 7671.
2. EARTH LOOP IMPEDANCE TO BE MEASURED UPON COMPLETION TO ENSURE COMPLIANCE WITH BS 7671 THE IEE WIRING REGULATIONS.
3. THE HANDRAIL IS TO BE BONDED TO EARTH VIA SUPPLEMENTARY BONDING CONDUCTORS RUN IN CONDUIT BENEATH THE PAVING SLABS OF THE BASE. THE DIMENSIONS OF THESE CONDUCTORS SHALL COMPLY WITH BS 7671 THE IEE WIRING REGULATIONS.
4. THE NUMBER OF SUPPLEMENTARY BONDING CONDUCTORS FOR THE HANDRAILS SHALL BE DETERMINED ON SITE, TO ENSURE THAT ALL EXTRANEOUS CONDUCTIVE PARTS ARE EQUIPOTENTIALLY BONDED.

A	SEE REVIEW SHEET	GC 05/01/06
I	FIRST ISSUE	BD 19/03/02
ISSUE	AMENDMENTS	APPD/DATE
DRN	C.S.G.	CHKD B.D.
DATE	05.02.02	DATE 09.02.02
DRG. NO.	NDX1010-00wd	
		SHT. NO. 3 of 4

This drawing was generated on computer and must not be manually updated

TITLE TYPICAL CAMERA SITE - EARTHING ARRANGEMENT

ORIGINAL DRAWING SIZE: 297 x 420  
ALL DIMENSIONS ARE IN MM  
TOLERANCE ±1 UNLESS OTHERWISE STATED  
THIRD ANGLE PROJECTION DO NOT SCALE