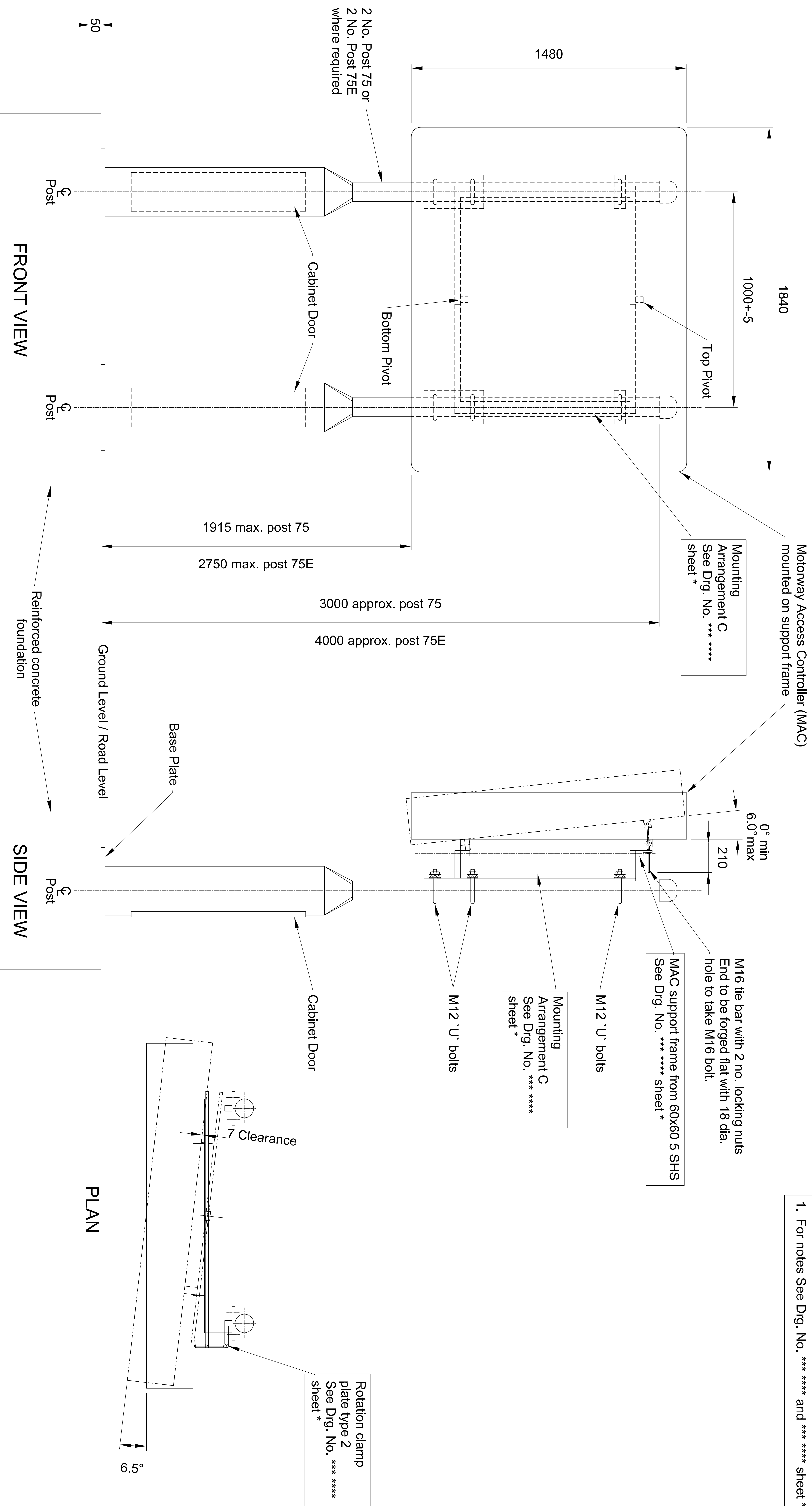


NOTES

1. For notes See Drg. No. **** * and **** * sheet *



Mounting
Arrangement C
See Drg. No. **** *
sheet *

Mounting
Arrangement C
See Drg. No. **** *
sheet *

M16 tie bar with 2 no. locking nuts
End to be forged flat with 18 dia.
hole to take M16 bolt.

MAC support frame from 60x60 5 SHS
See Drg. No. **** * sheet *

Rotation clamp
plate type 2
See Drg. No. **** *
sheet *

Note:
The NDX series of drawings represents
non site specific installations of standard
equipment and site layouts.

This drawing was generated on computer and must not be manually updated

**TYPICAL INSTALLATION AND SUPPORT DETAIL FOR
MOTORWAY ACCESS CONTROLLER (MAC)**

| | | | | | | | |
|--|--|-----------------------|--|-----------------|--|-------------|--|
| ORIGINAL DRAWING SIZE: 297 x 420 | | DRN C.S.G. | | CHKD B.D. | | SCALE | |
| ALL DIMENSIONS ARE IN MM | | DATE 09.11.09 | | DATE 09.11.09 | | N.T.S. | |
| TOLERANCE +- 1 UNLESS OTHERWISE STATED | | DRG. NO. NDX1029-03ga | | SHT. NO. 1 of 1 | | | |
| THIRD ANGLE PROJECTION DO NOT SCALE | | ISSUE A | | AMENDMENTS | | APPD/DATE | |
| | | FIRST ISSUE | | | | BD 13/11/09 | |