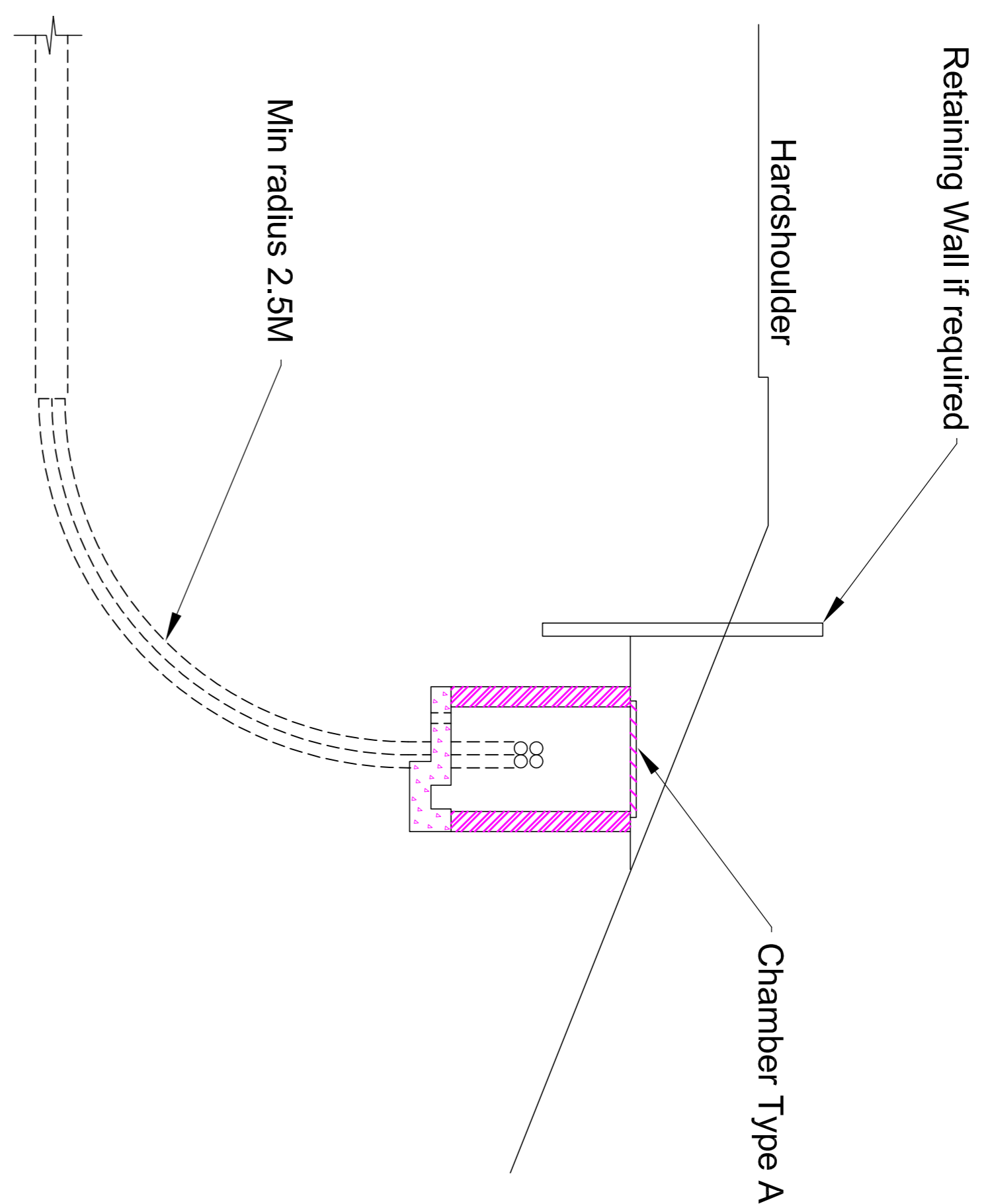
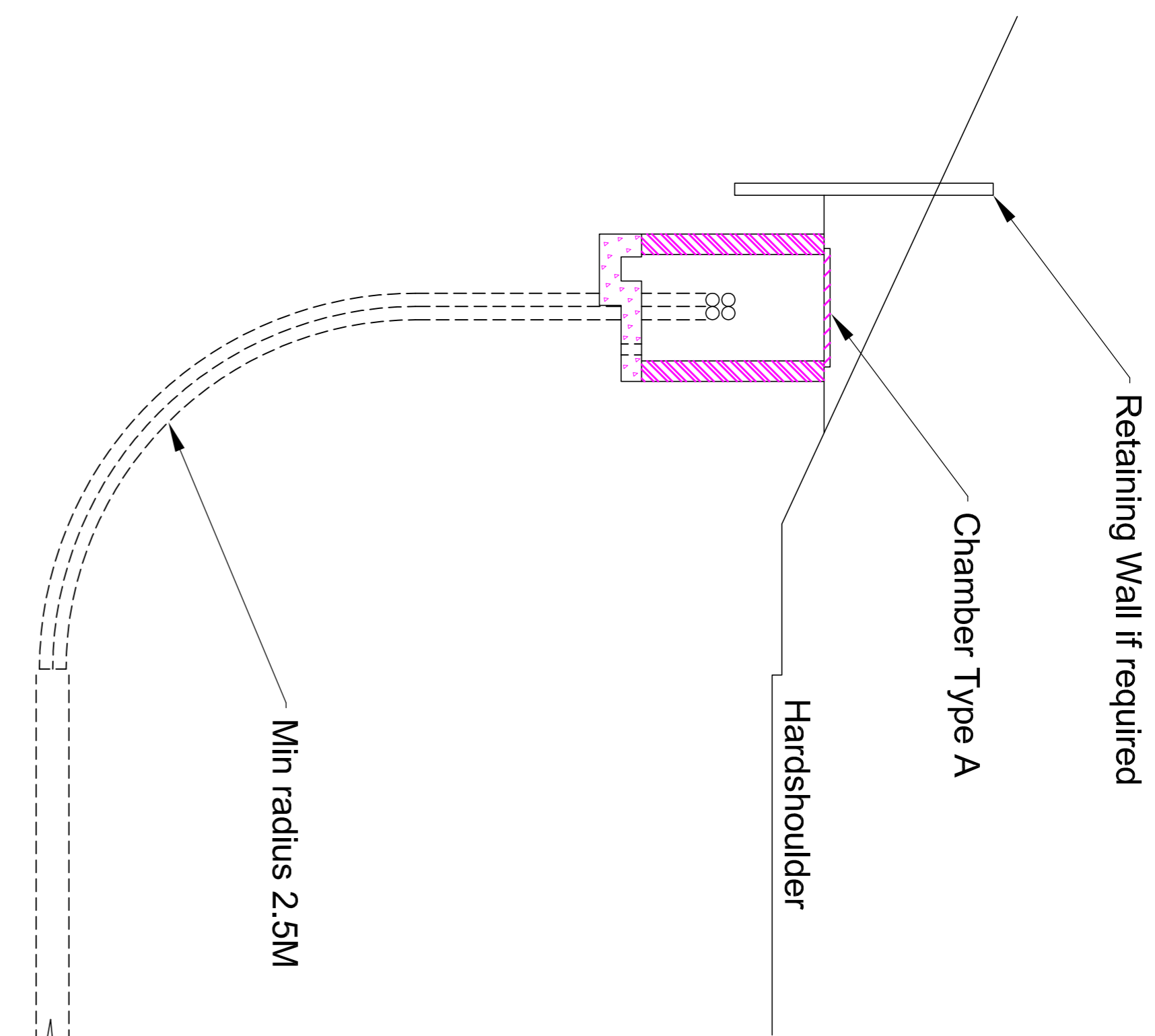
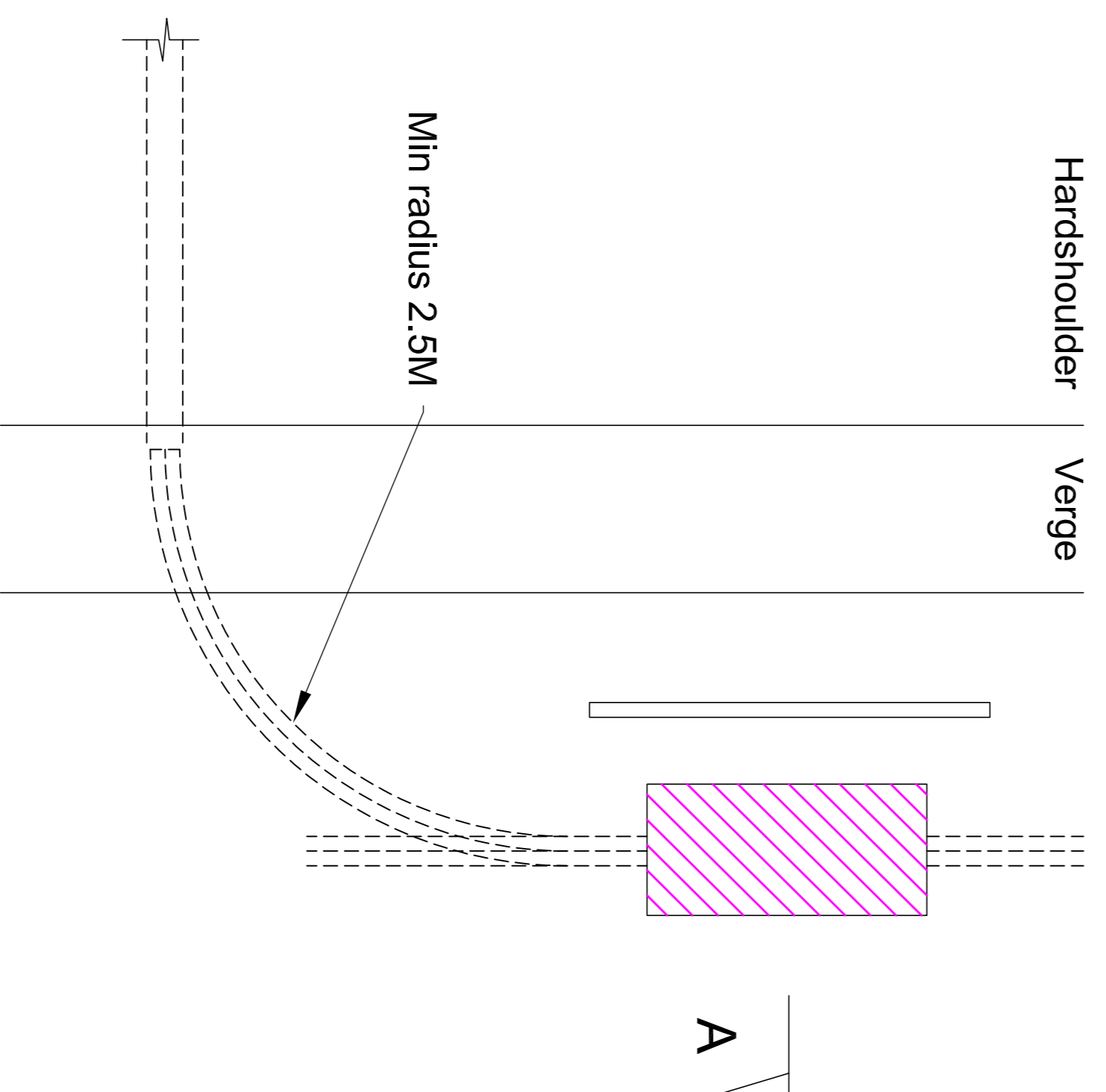
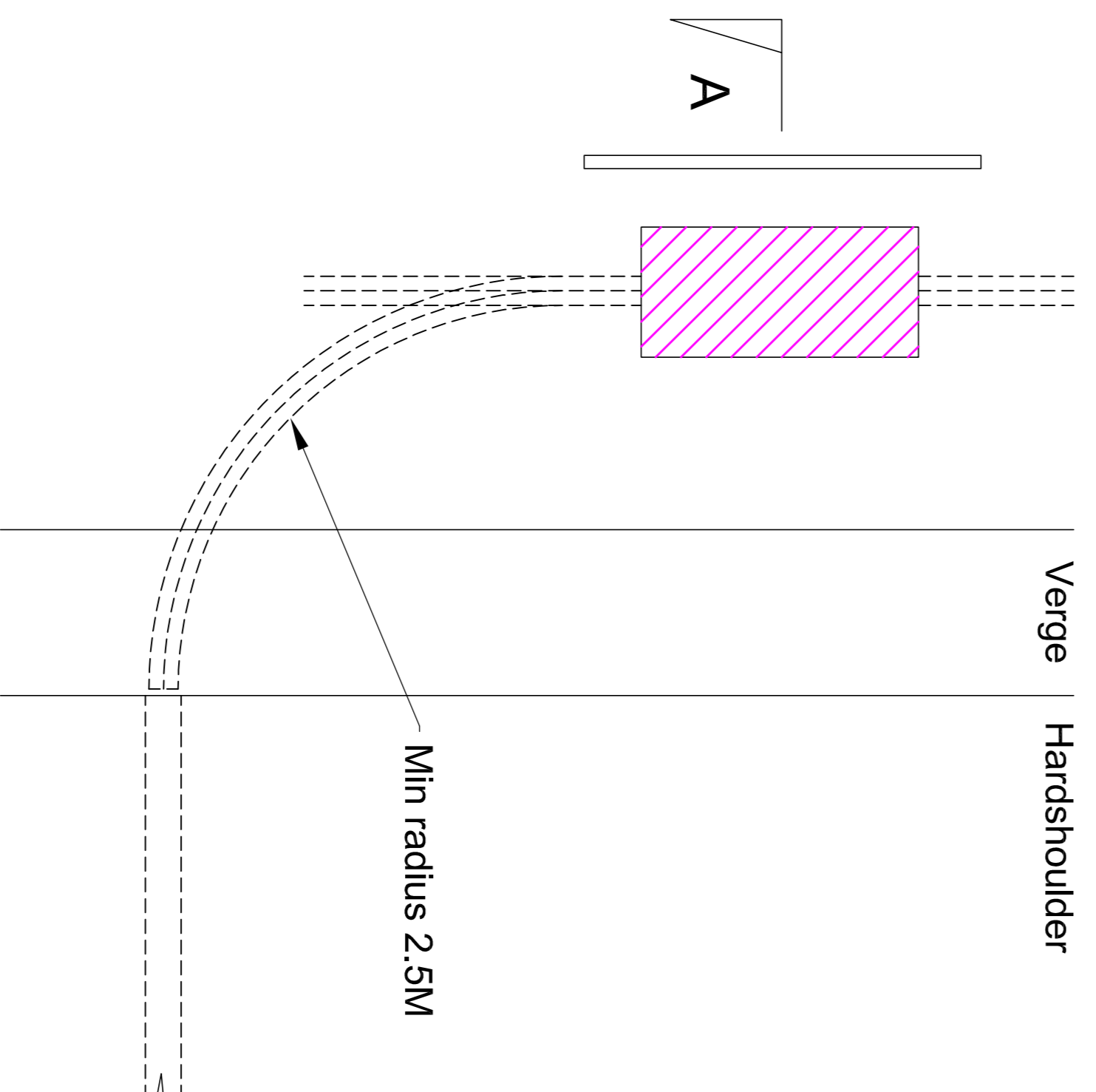


NOTES

1. This detail is to be used when the transverse ducts are too deep to be accommodated in a 2M deep chamber.
2. For chamber details see drawing NDX1063-01, 02 & 03.
3. Where the topography of the site dictates, a second chamber may be required in order to bring the ducts onto the line of the longitudinal duct route. The two chambers shall be linked with 4 x 100mm, straight ducts at right angles to the longitudinal cable route.



SECTION A - A



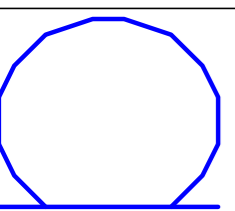
PLAN

This drawing was generated on computer and must not be manually updated

TITLE

TYPICAL INSTALLATION OF DEEP TRANSVERSE DUCTS

Note:
The NDX series of drawings represents non site specific installations of standard equipment and site layouts.



ORIGINAL DRAWING SIZE: 297 x 420		DRN	C.S.G.	CHKD	B.D.	SCALE
ALL DIMENSIONS ARE IN MM		DATE	25.09.01	DATE	29.09.01	N.T.S.
TOLERANCE +/- 1 UNLESS OTHERWISE STATED		DRG. NO.	NDX1063-00dt		SHT. NO.	
THIRD ANGLE PROJECTION DO NOT SCALE		ISSUE	AMENDMENTS		APPD/DATE	
B	REDRAWN					BD 30/11/09
A	FOR INFORMATION					BD 09/02/03
1	FIRST ISSUE					BD 07/12/01