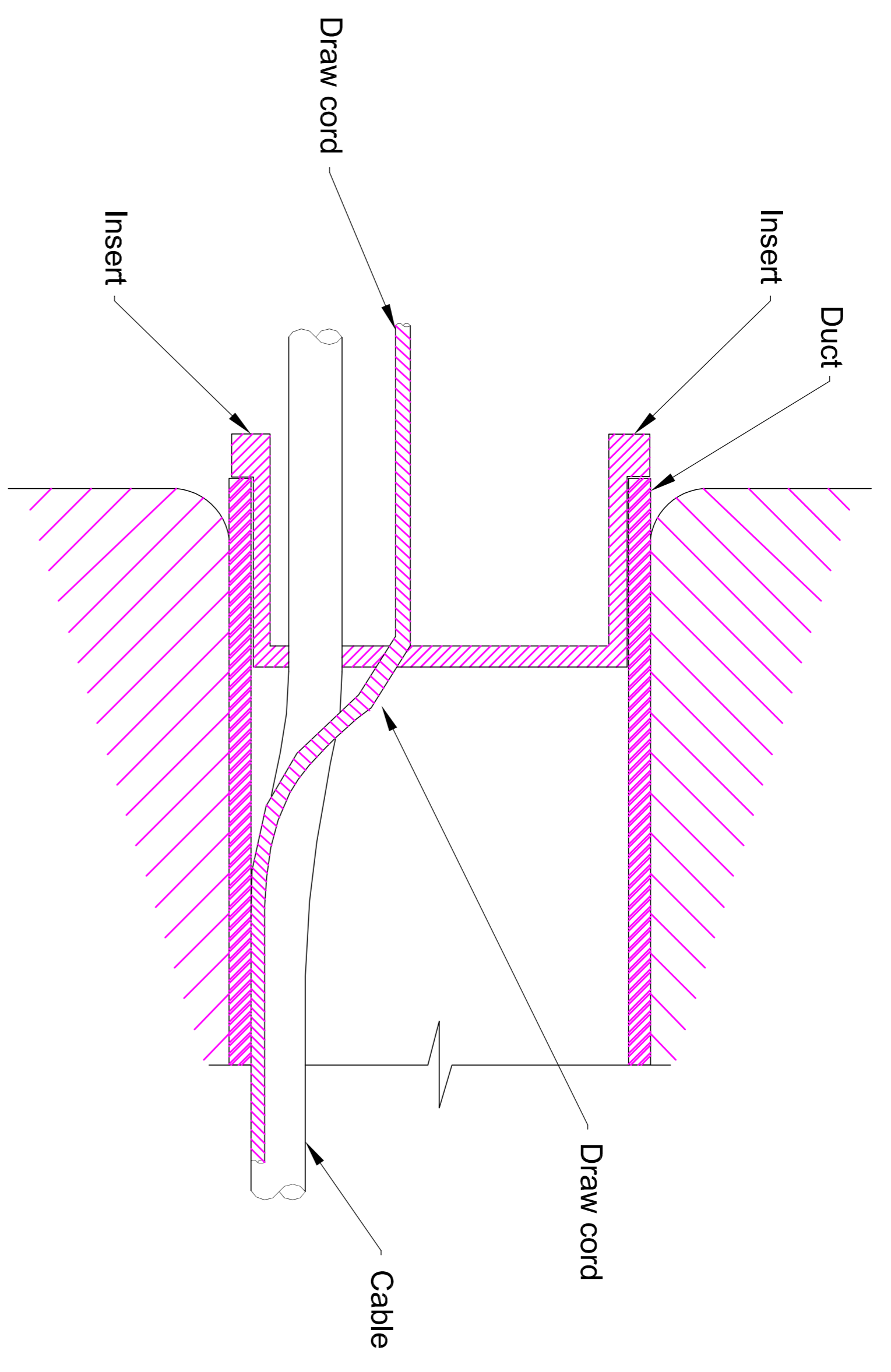
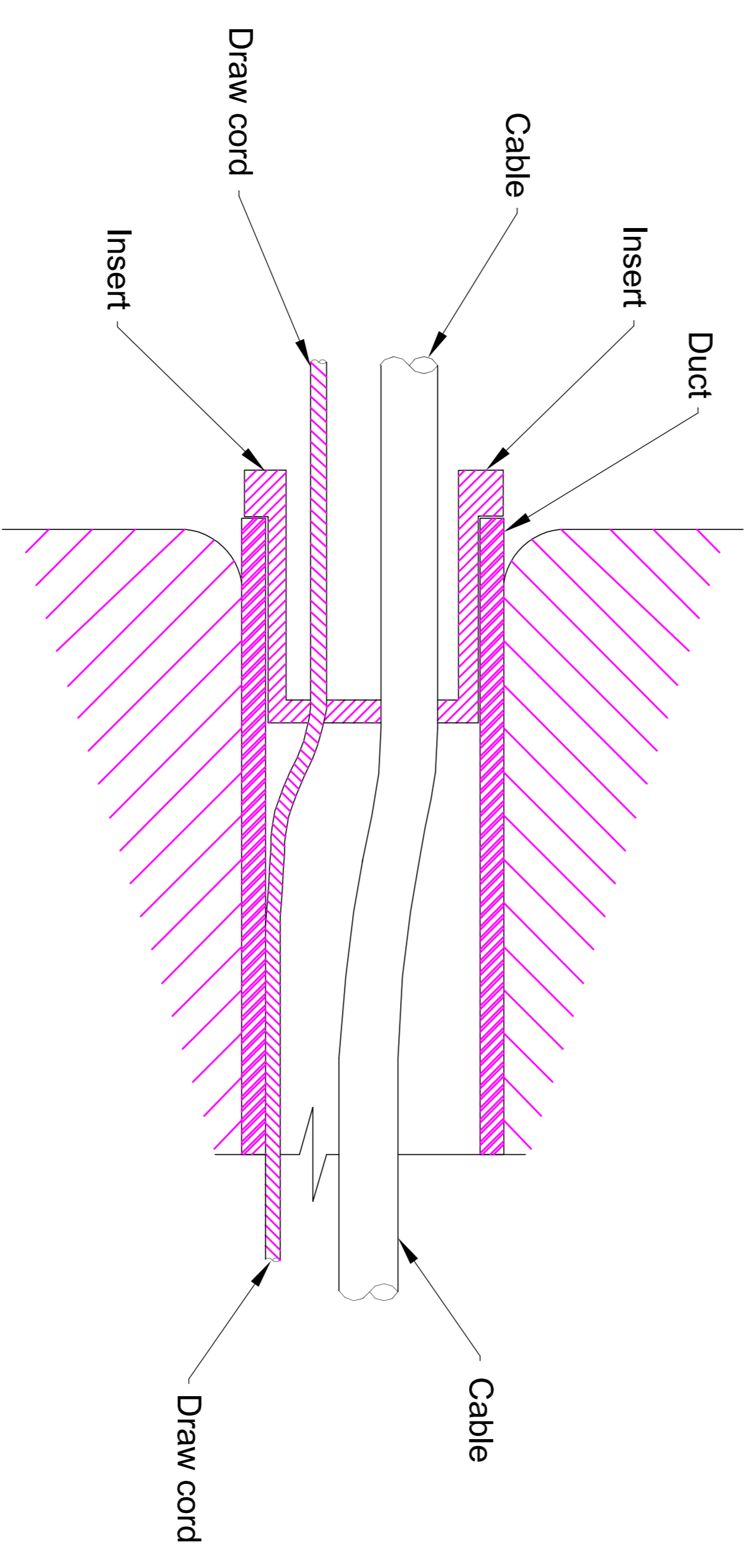


- NOTES**
1. The duct insert shown is typical.
 2. The duct insert will be fitted into the end of every duct at every chamber and every cabinet.
 3. The cable insert shall not hold cables captive.
 4. Provision should be made in the insert to allow any draw cord to be passed through it.
 5. For air test after back filling refer to Scottish Series 1500 clause 1533.



SECTION THROUGH DUCT AND DUCT INSERT
(100mm duct)



SECTION THROUGH DUCT AND DUCT INSERT
(50mm duct)

Note:
The NDX series of drawings represents non site specific installations of standard equipment and site layouts.

This drawing was generated on computer and must not be manually updated

TYPICAL DUCT INSTALLATION - MECHANICAL DUCT PLUGS

ORIGINAL DRAWING SIZE: 297 x 420		DRN	C.S.G.	CHKD	B.D.	SCALE
ALL DIMENSIONS ARE IN MM		DATE	25.09.01	DATE	29.09.01	N.T.S.
TOLERANCE +/- 1 UNLESS OTHERWISE STATED		DRG. NO.	NDX1063-00dt		SHT. NO.	7 of 10
THIRD ANGLE PROJECTION DO NOT SCALE		ISSUE		AMENDMENTS		APPD/DATE
B	SEE REVISION SHEET					GC 05/02/06
D	UPDATED SEE REV. SHT.					BD 30/11/09
C	REDRAWN					BD 13/10/09