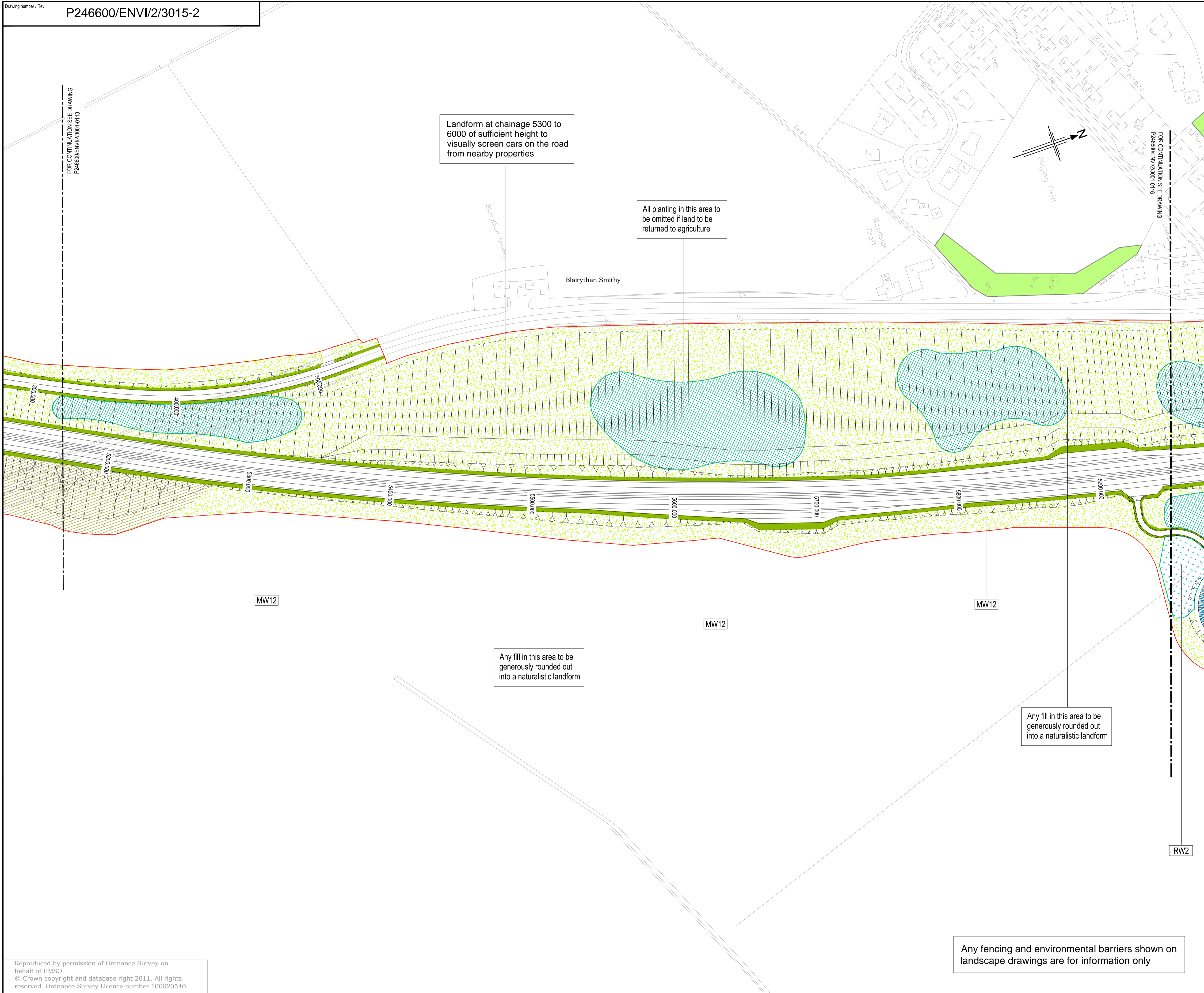


FOR CONTINUATION SEE DRAWING
P246600/ENVI/2/301-0113



Key

- Land Made Available (LMA)
- Individual Tree
- Mixed Woodland (MW10)
- Mixed Woodland with Beech (MW11)
- Beech Rich Woodland (MW12)
- Pine Rich Woodland (MW13)
- Screen Woodland (MW14)
- Riparian Woodland (RW2)
- Scrub Woodland (SW3)
- Scrub Woodland - low (SW10)
- Decorative Shrub (DE10)
- Agricultural Seeding
- Low Maintenance (verge) Seeding
- Species Rich Seeding
- Aquatic Seeding
- Existing Woodland for Retention
- Land to be Returned to Previous Use
- Hedgerow
- Post and Rail Fence
- Environmental Barrier (noise)
- Environmental Barrier (glare)
- Stone Wall
- Mammal Tunnel

IMPORTANT

HEALTH, SAFETY & ENVIRONMENTAL INFORMATION

IN ADDITION TO THE HAZARDS AND RISKS NORMALLY ASSOCIATED WITH THE TYPE OF WORK DETAILED ON THIS DRAWING, PLEASE NOTE THE FOLLOWING SIGNIFICANT RISKS TO HEALTH & SAFETY:-

THE SIGNIFICANT RISKS ASSOCIATED WITH THE PROJECT ARE NOTED BELOW

Ref	Description	AG	HC	RL	SW
1	No significant (unusual or expected) risks that a competent contractor would not be aware of are anticipated for Works associated with this Design element between the chainage limits of this drawing				

REFERENCE RESIDUAL RISK LOG FOR FULL DETAILS
REF: P246600/3000RRL

IT IS ASSUMED THAT ALL WORKS SHALL BE UNDERTAKEN BY A COMPETENT CONTRACTOR WORKING WHERE APPROPRIATE TO AN APPROVED SAFE SYSTEM OF WORK

Rev	Rev. Date	Purpose of revision	Drawn	Check	Rev'd	Appr'd
2	21.02.2014	Landscaping amended	AG	HC	RL	SW
1	07.10.2013	Amended as per Revised LMA & Schedule 19	AG	HC	RL	SW

Grontmij 2nd Floor Spectrum House
2 Powdermill Road Edinburgh EH7 4GB
Tel: +44 (0)131 550 6300 Fax: +44 (0)131 550 6499 www.grontmij.co.uk

Aberdeen Western Peripheral Route
Balmedie-Tipperty

Drawing title
A90 Balmedie-Tipperty
Indicative Landscape Design

Sheet 15 of 19

Drawing status
For Dialogue

Scale 1:1250 @ A1 DO NOT SCALE

Drawing number P246600/ENVI/2/3015 Rev 2

This drawing is not to be used in whole or part other than for the intended purpose and project as defined on this drawing. Refer to the contract for full terms and conditions.

Any fencing and environmental barriers shown on landscape drawings are for information only