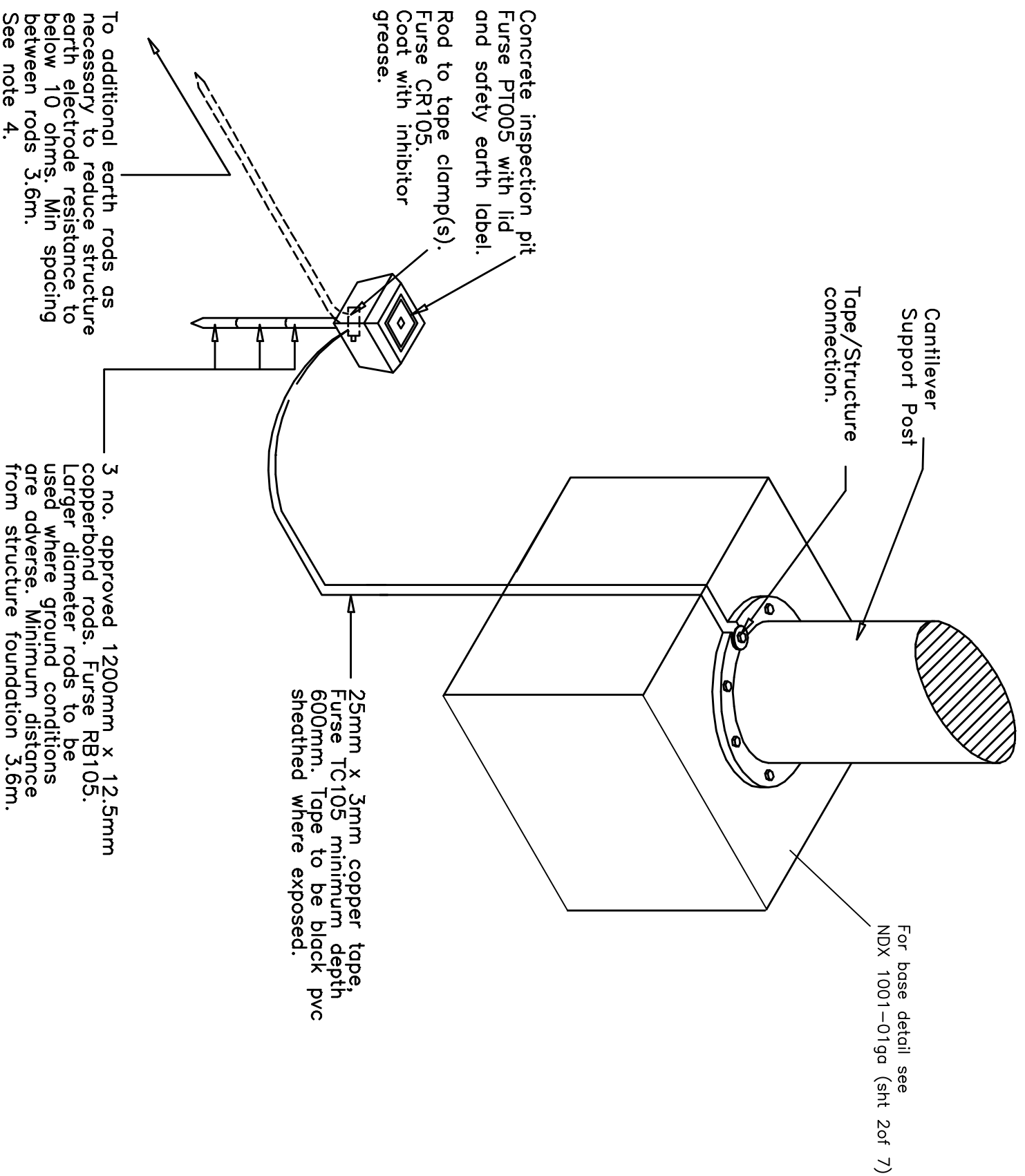


Notes

1. Details shown are for VMS cantilever leg.
2. At each structure the minimum requirements as shown shall be installed and tests carried out to ascertain the structure to earth resistivity. Tests shall be carried out in accordance with BS 7430. Test results together with test weather conditions shall be recorded in tabular form and forwarded to the Engineer.
3. For the tests it is required that all live supply conductors, power cable, earth conductors and the armouring of all power and communications cables be temporarily disconnected from the structure. Earthing conductors/armouring shall be disconnected only after disconnection of live conductors and upon completion of testing, shall be reconnected before reconnection of the live conductors. It should be noted that neutral conductors constitute live conductors.
4. The structure when electrically continuous may be considered to be self protecting, provided the resistance to earth does not exceed 10 ohms (in accordance with BS 6651). Where the resistance to earth exceeds 10 ohms an appropriate earth electrode system from the Cantilever post shall be provided in accordance with BS6651
5. At cantilever sites the Infrastructure Contractor shall supply copper tape one metre longer than required for the test connection to holding down bolts. After testing the test plate shall be unbolted and the spare copper tape coiled up, protected with a polythene bag and buried in the ground adjacent to the cantilever foundation.
6. If ground conditions prohibit the driving of earth rods, a suitable earth plate system may be substituted following approval by the Engineer.
7. Approval for equipment which is not manufactured by Furse shall not be unreasonably withheld where the Contractor can demonstrate that his adopted equipment is in all respects physically compatible with the Furse equipment and exhibits equivalent or better electrical performance characteristics.



C	REFER TO REVISION SHEET	GC 05/02/06		
A	FOR CONSTRUCTION	BD 19/01/03		
I	FIRST ISSUE	BD 09/05/02		
ISSUE	AMENDMENTS	APPD./DATE		
DRN	C.S.G.	CHKD B.D.	SCALE	
DATE	05.05.02	DATE	09.05.02	N.T.S.
DRG. NO.	NDX1001-01dt		SHT. NO.	5 of 7
ORIGINAL DRAWING SIZE:	297 x 420			
ALL DIMENSIONS ARE IN MM				
TOLERANCE ± 1 UNLESS OTHERWISE STATED				
THIRD ANGLE PROJECTION	DO NOT SCALE			