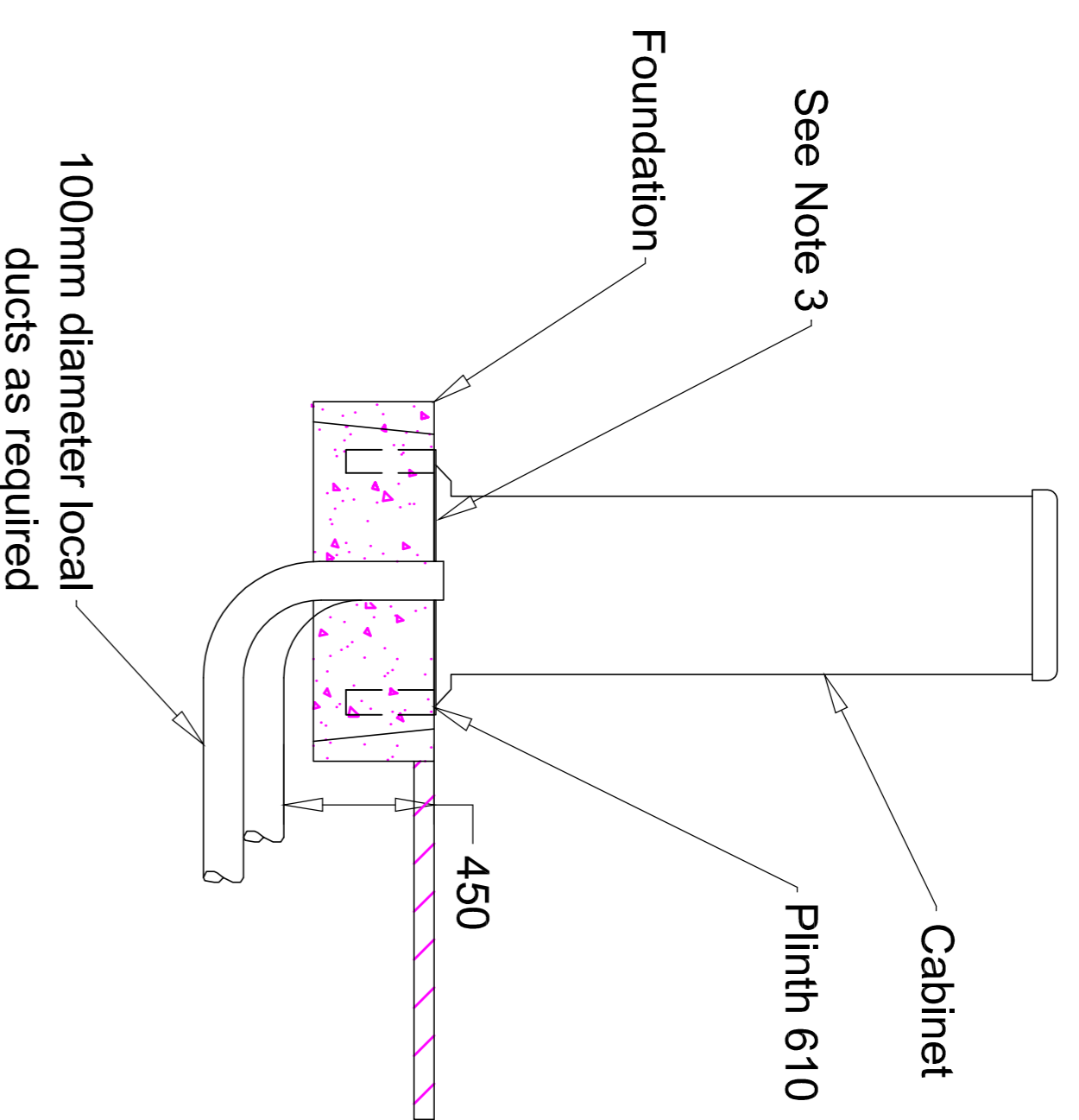
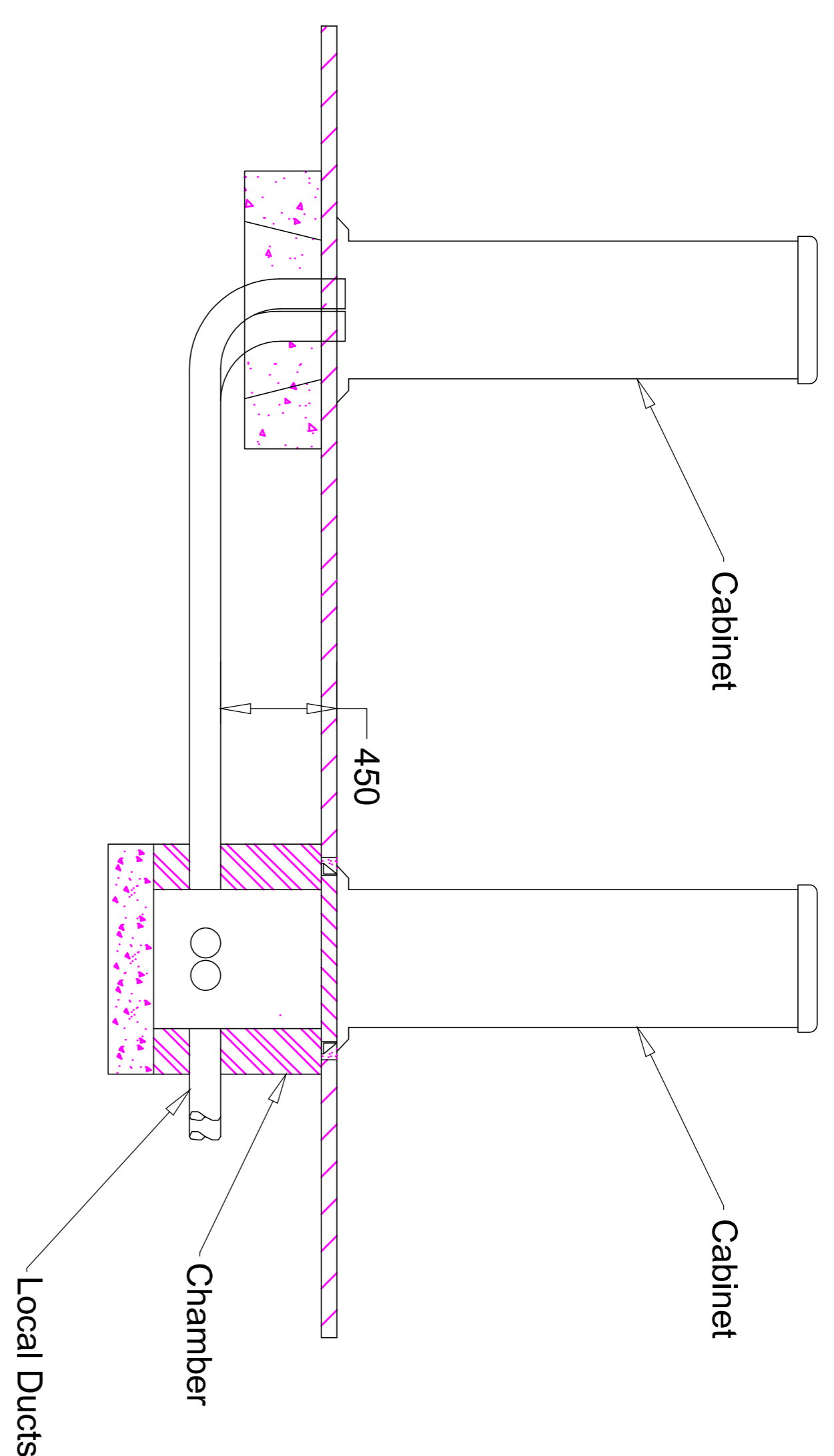


NOTES

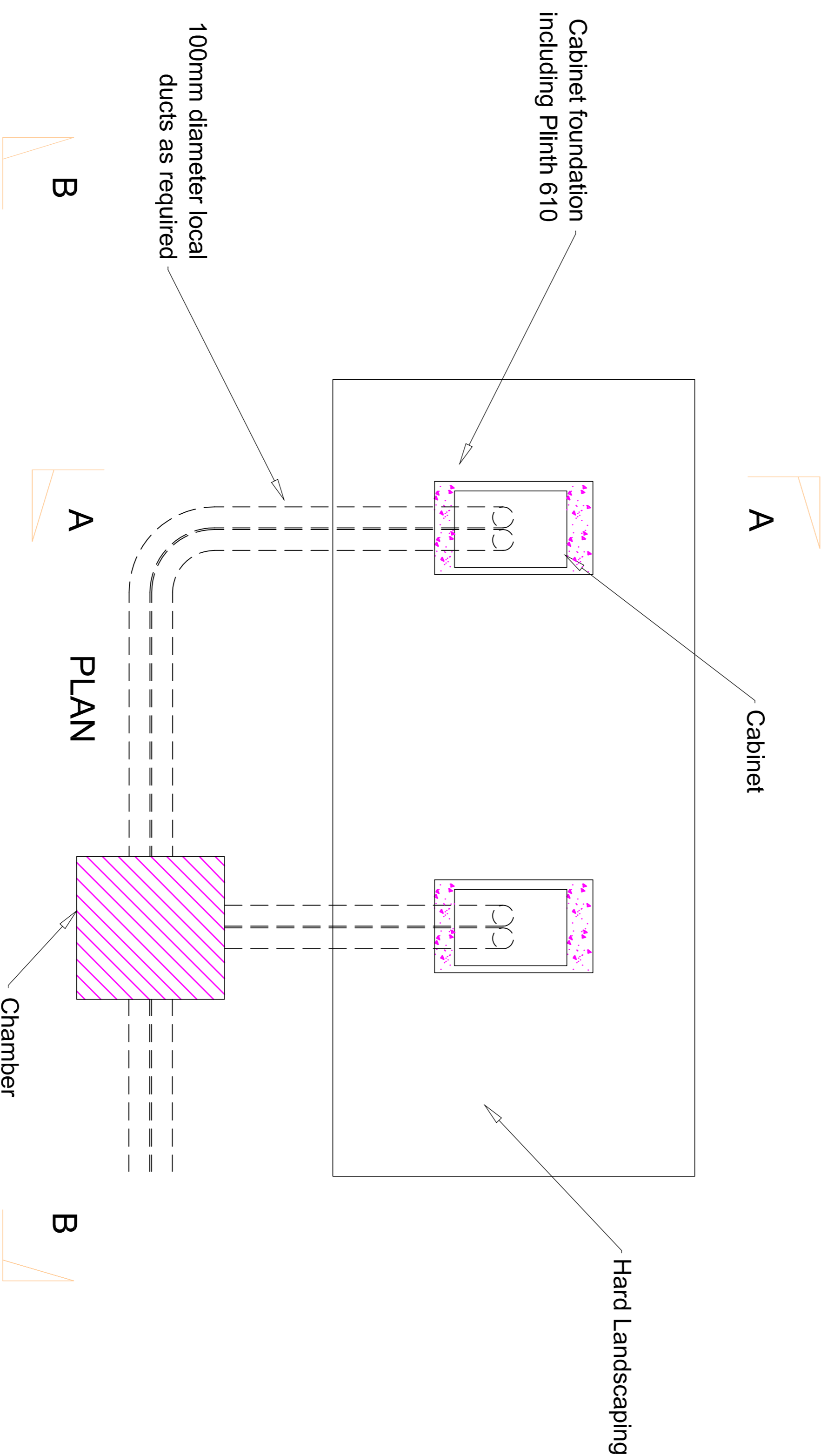
1. Reference should also be made to the Scottish 1500 Series clause 1508 and 1547.
2. Following installation of the ducts to the cabinet, the foundation, including the volume inside the plinth 610, is to be filled with 6mm pea gravel and with top layer of sand,
3. A resin seal, to ensure a moisture free environment is created within the cabinet, shall be provided within all Type 600 cabinets. The minimum thickness of resin shall be 6mm and the resin shall meet the requirements of BT resin pack 6A specification M222 or equivalent.
4. The duct within the cabinet shall extend 10mm above the top of the resin seal.
5. The ducted layout shown is typical only. Where the adjacent cabinet is not the last in the cabinet group the ducted network shall extend at a level grade.
6. Following construction of the cabinet foundations all ducts shall be sealed or plugged in accordance with Clause 1530 of the Scottish 1500 Series.
7. Cabinet foundations shall be constructed in accordance with Clause 1508 of the Scottish 1500 Series.



SECTION A - A



SECTION B - B



PLAN

Note:
The NDX series of drawings represents non site specific installations of standard equipment and site layouts.

This drawing was generated on computer and must not be manually updated

TYPICAL HA TYPE 600 CABINET INSTALLATION - PLINTHS

ORIGINAL DRAWING SIZE: 297 X 420		SCALE	
ALL DIMENSIONS ARE IN MM		N.T.S.	
TOLERANCE +/- 1 UNLESS OTHERWISE STATED		SHT. NO. 1 of 17	
THIRD ANGLE PROJECTION DO NOT SCALE		DRG. NO. NDX1002-00ga	
C	REDRAWN	BD 13/10/09	
B	NOTE 8 ADDED	GC 29/09/06	
D	UPDATED SEE REV. SHT.	BD 30/11/09	
ISSUE		AMENDMENTS	
DRN	C.S.G.	CHKD	B.D.
DATE	25.09.01	DATE	29.09.01