

Legend

- Proposed scheme (DMRB Stage 3 Design)
- SuDS Detention Basin
- SuDS Retention Pond/Wetland

Outdoor Receptors

- Core path
- NMU route
- National Cycle Route
- Railway line
- Road
- Recreation

Visual Impact

Black box	Negligible	Orange box	Moderate
Yellow/Black box	Negligible/Slight	Red/Orange box	Moderate/Substantial
Yellow box	Slight	Red box	Substantial
Yellow/Orange box	Slight/Moderate		

Indicative signage

- Orange diamond: ADS sign
- Purple diamond: Route confirmation sign
- Green diamond: Tourist sign
- Pink diamond: VMS sign
- Light blue diamond: Other large sign

Zone of Theoretical Visibility (ZTV)

- Blue shaded area: Visibility at target points along the proposed scheme

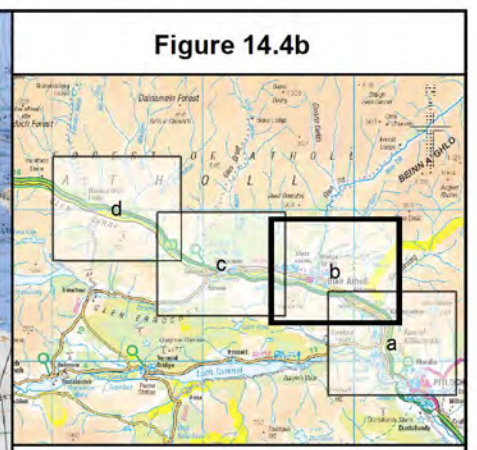
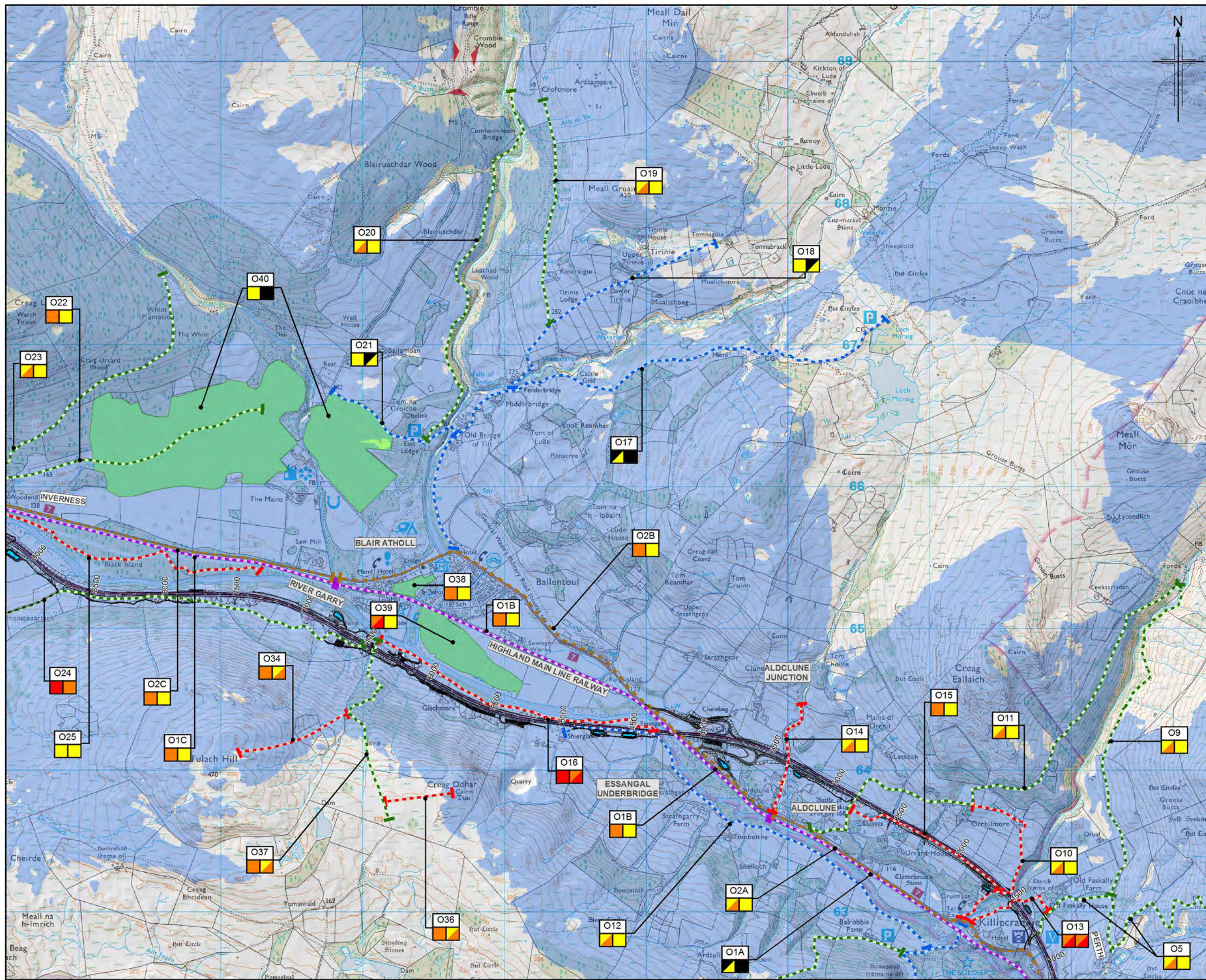
* Note:
The height from alignment was set at 4.5m and viewer height was 1.75m. The ZTV calculation only takes account of landform and does not take into account any surface features such as buildings or vegetation.

0	NOV 2017	ES Publication	JCr	MK	ML	AJG
Rev.	Rev. Date	Purpose of revision	Orig/Dwn	Checkd	Rev'd	Apprv'd



Drawing title		Environmental Statement Visual Impact on Outdoor Receptors	
Sheet 1 of 4			
Drawing Status	FINAL		
Scale	1:25,000 @ A3	DO NOT SCALE	
Jacobs No.	B2140005		
Bill No.			
Drawing number	Figure 14.4a	Rev	0

Figure 14.4b



Legend

- Proposed scheme (DMRB Stage 3 Design)
- SuDS Detention Basin
- SuDS Retention Pond/Wetland

Outdoor Receptors

- Core path
- NMUs route
- National Cycle Route
- Recreation
- Railway line
- Road

Visual Impact

Black square	Negligible	Orange square	Moderate
Black/Yellow square	Negligible/Slight	Orange/Red square	Moderate/Substantial
Yellow square	Slight	Red square	Substantial
Yellow/Orange square	Slight/Moderate		

Indicative signage

- ADS sign
- Route confirmation sign
- Tourist sign
- VMS sign
- Other large sign

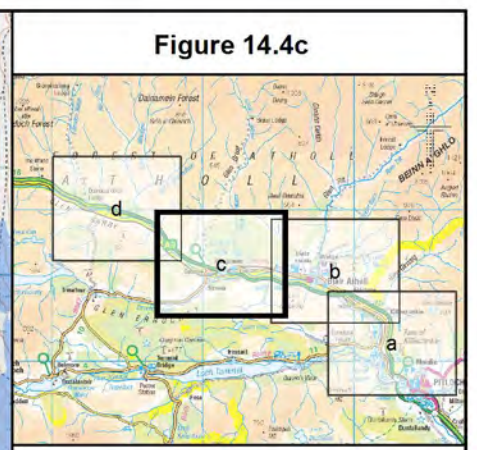
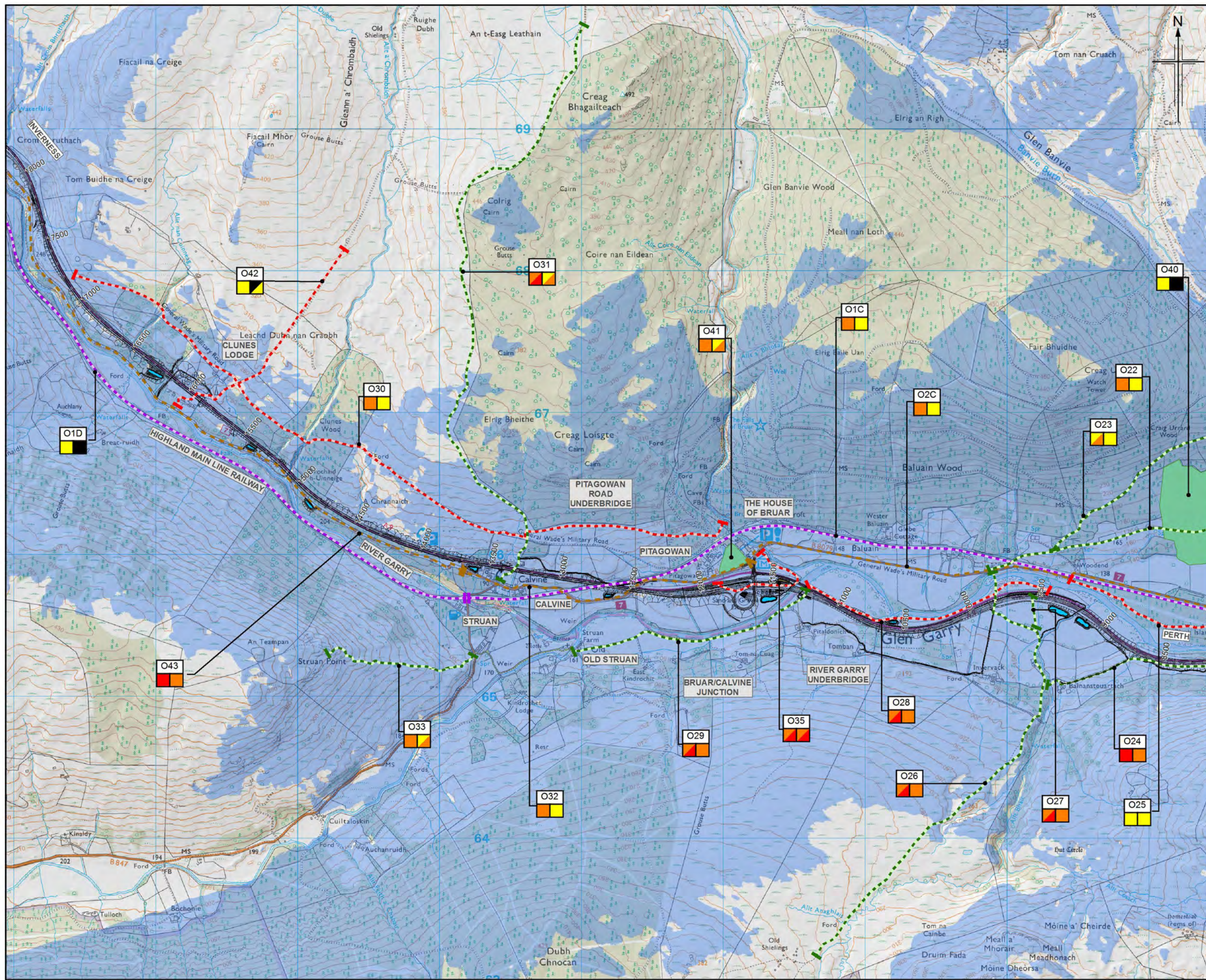
Zone of Theoretical Visibility (ZTV) *

- Visibility at target points along the proposed scheme

* Note:
The height from alignment was set at 4.5m and viewer height was 1.75m. The ZTV calculation only takes account of landform and does not take into account any surface features such as buildings or vegetation.

0	NOV 2017	ES Publication	JCr	MK	ML	AJG
Rev.	Rev. Date	Purpose of revision	Orig/Dwn	Checkd	Rev'd	Apprv'd
JACOBS 95 Belford Street, Glasgow, G2 7HX, UK Tel: +44(0)141 243 8000 www.jacobs.com						
Client: TRANSPORT SCOTLAND COM-DHAI ALBA						
Project: A9 DUALLING PERTH TO INVERNESS Killiecrankie to Glen Garry						
Drawing title: Environmental Statement Visual Impact on Outdoor Receptors						
Sheet 2 of 4						
Drawing Status	FINAL					
Scale	1:25,000	@ A3	DO NOT SCALE			
Jacobs No.	B2140005					
Bill No.						
Drawing number	Figure 14.4b					Rev
						0

Figure 14.4c



Legend

- Proposed scheme (DMRB Stage 3 Design)
- SuDS Detention Basin
- SuDS Retention Pond/Wetland

Outdoor Receptors

- Core path
- NMUs route
- National Cycle Route
- Recreation
- Railway line
- Road

Visual Impact

Black box	Negligible	Orange box	Moderate
Black/White diagonal box	Negligible/Slight	Orange/Red diagonal box	Moderate/Substantial
Yellow box	Slight	Red box	Substantial
Yellow/Orange diagonal box	Slight/Moderate		

Indicative signage

- Orange diamond: ADS sign
- Purple diamond: Route confirmation sign
- Green diamond: Tourist sign
- Pink diamond: VMS sign
- Light blue diamond: Other large sign

Zone of Theoretical Visibility (ZTV) *

- Blue shaded area: Visibility at target points along the proposed scheme

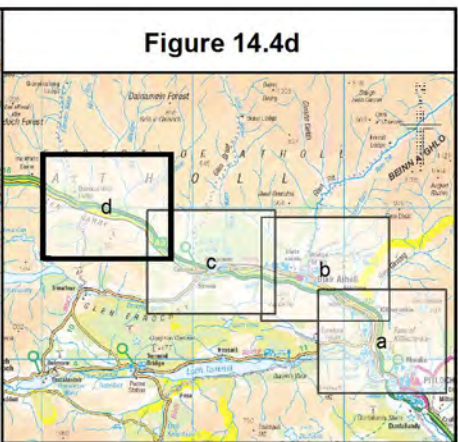
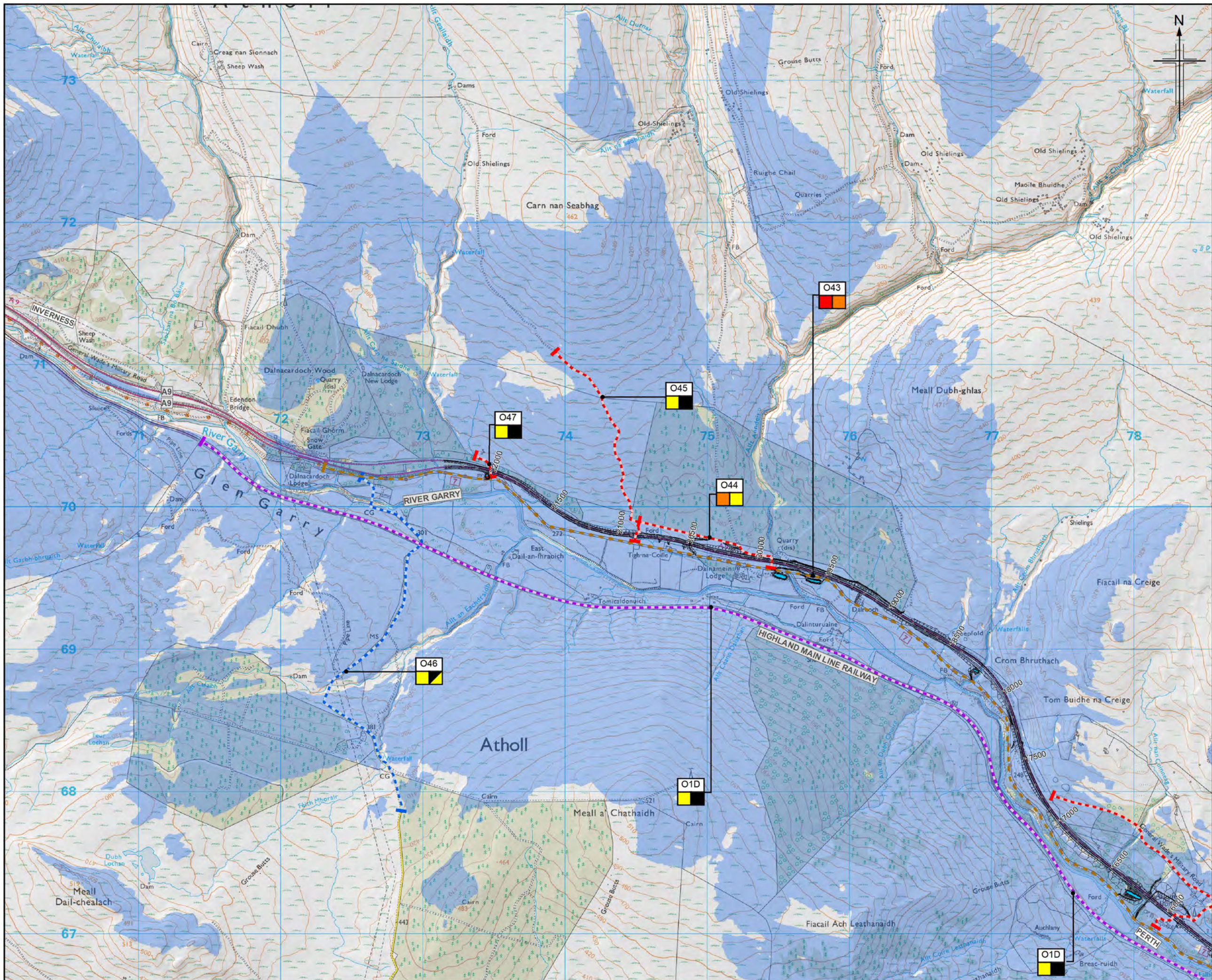
* Note:
The height from alignment was set at 4.5m and viewer height was 1.75m. The ZTV calculation only takes account of landform and does not take into account any surface features such as buildings or vegetation.

Rev.	Rev. Date	Purpose of revision	Orig/Dwn	Checkd	Rev'd	Apprv'd	
0	NOV 2017	ES Publication		JCr	MK	ML	AJG



**Environmental Statement
Visual Impact on
Outdoor Receptors**

Drawing Status	FINAL	Sheet 3 of 4
Scale	1:25,000 @ A3	DO NOT SCALE
Jacobs No.	B2140005	
Bill No.		
Drawing number	Figure 14.4c	Rev 0



- Legend**
- Proposed scheme (DMRB Stage 3 Design)
 - SuDS Detention Basin
 - SuDS Retention Pond/Wetland
- Outdoor Receptors**
- Core path
 - NMU route
 - National Cycle Route
 - Railway line
 - Road
 - Recreation

a)	a) Receptor number
b)	b) Impact Winter Year of Opening
c)	c) Impact Summer 15 Years

Visual Impact

Negligible	Moderate
Negligible/Slight	Moderate/Substantial
Slight	Substantial
Slight/Moderate	

- Indicative signage**
- ADS sign
 - Route confirmation sign
 - Tourist sign
 - VMS sign
 - Other large sign

Zone of Theoretical Visibility (ZTV) *

Visibility at target points along the proposed scheme

* Note:
The height from alignment was set at 4.5m and viewer height was 1.75m. The ZTV calculation only takes account of landform and does not take into account any surface features such as buildings or vegetation.

0	NOV 2017	ES Publication	JCr	MK	ML	AJG
Rev.	Rev. Date	Purpose of revision	Orig/Dwn	Checkd	Rev'd	Apprv'd

JACOBS
95 Belford Street, Glasgow, G2 7HX, UK
Tel: +44(0)141 243 8000
www.jacobs.com

Client
TRANSPORT SCOTLAND
COMH-DHAL ALBA

Project
A9 DUALLING
PERTH TO INVERNESS
Killiecrankie to Glen Garry

Drawing title
Environmental Statement
Visual Impact on
Outdoor Receptors

Drawing Status	FINAL	Sheet 4 of 4
Scale	1:25,000 @ A3	DO NOT SCALE
Jacobs No.	B2140005	
BIM No.		
Drawing number	Figure 14.4d	Rev 0

