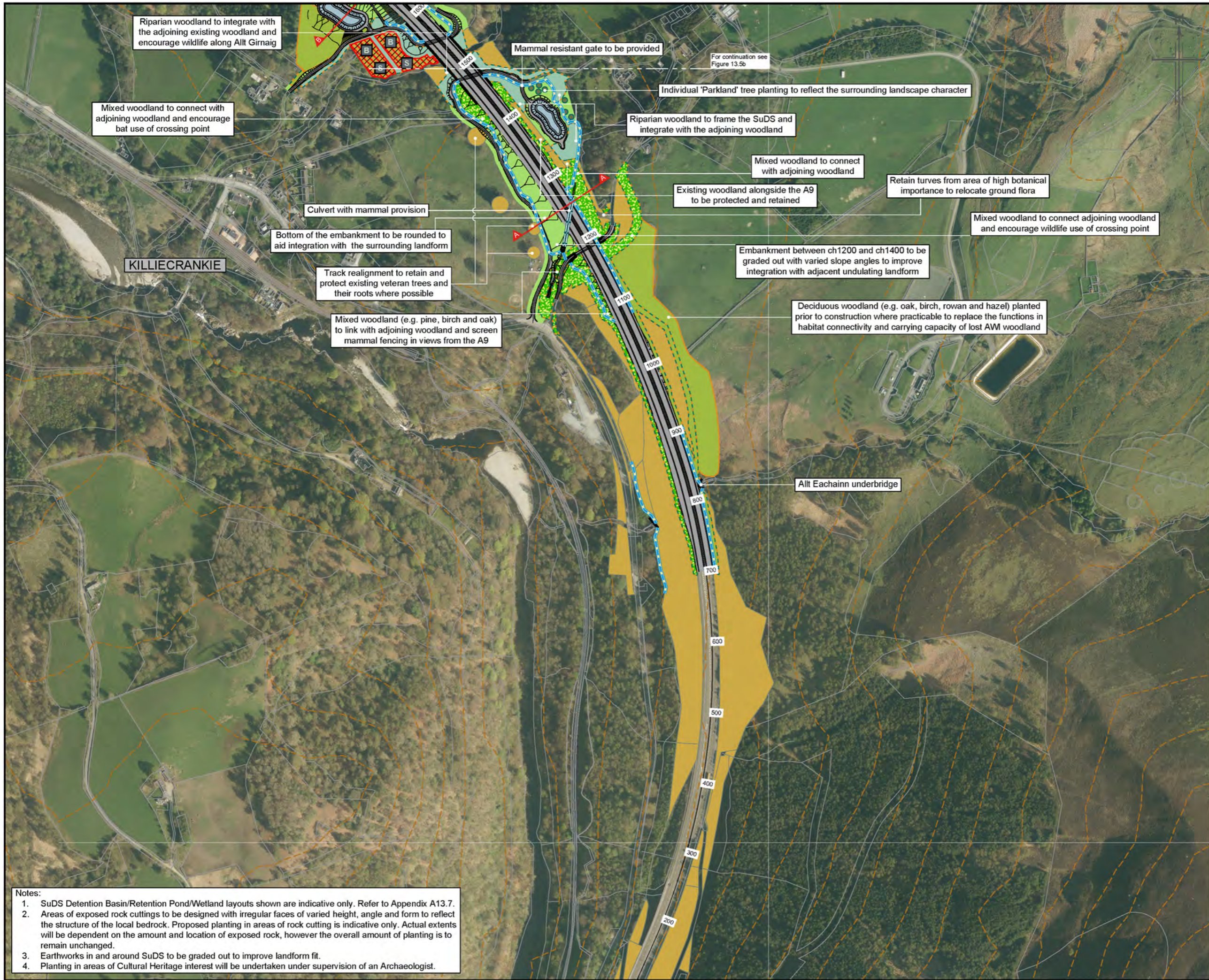


Figure 13.5a



**Legend**

- Proposed Scheme (DMRB Stage 3 Design)
- SuDS Detention Basin (Green)
- SuDS Retention Pond / Wetland (Blue)
- Existing Vegetation to be Retained (inside CPO)
- Existing Contours (5m Intervals)
- Cross Section Locations (see Figure 13.6)

**Landscape and Ecological Mitigation Proposals**

- Landscape Planting Proposals
- Ecological Planting Proposals
- Ecological and Landscape Planting Proposals
- Deciduous Woodland
- Mixed Woodland
- Riparian Woodland
- Scrub
- Individual Trees
- Heath
- Species Rich Grassland
- Wet Grassland Mix
- Visibility Splay Mix
- Potential Return to Agriculture
- Bat Mitigation Area (woodland to be retained) for provision of boxes
- Red Squirrel & Bat Mitigation Area (woodland to be retained) for provision of boxes
- Dry Mammal Underpass
- Culvert with mammal provision (see individual labels)
- Otter Resistant Fencing
- Badger Resistant Fencing
- Proposed Hibernacula Locations

0	NOV 2017	ES Publication	SDVSHF	MKLMc	ML	AG
Rev	Rev. Date	Purpose of revision	Orig/Dwn	Check'd	Rev'd	Appr'd

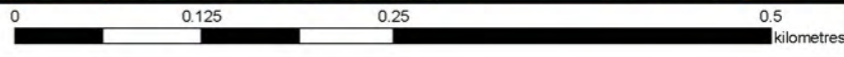
**JACOBS**  
 95 Bothwell Street, Glasgow, G2 7HX, UK.  
 Tel: +44(0)141 243 8000  
 www.jacobs.com



**Environmental Statement  
 Landscape and Ecological  
 Mitigation**

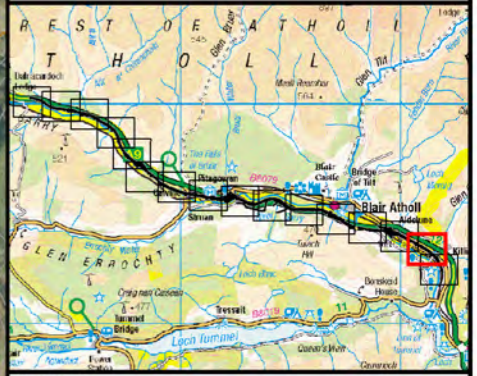
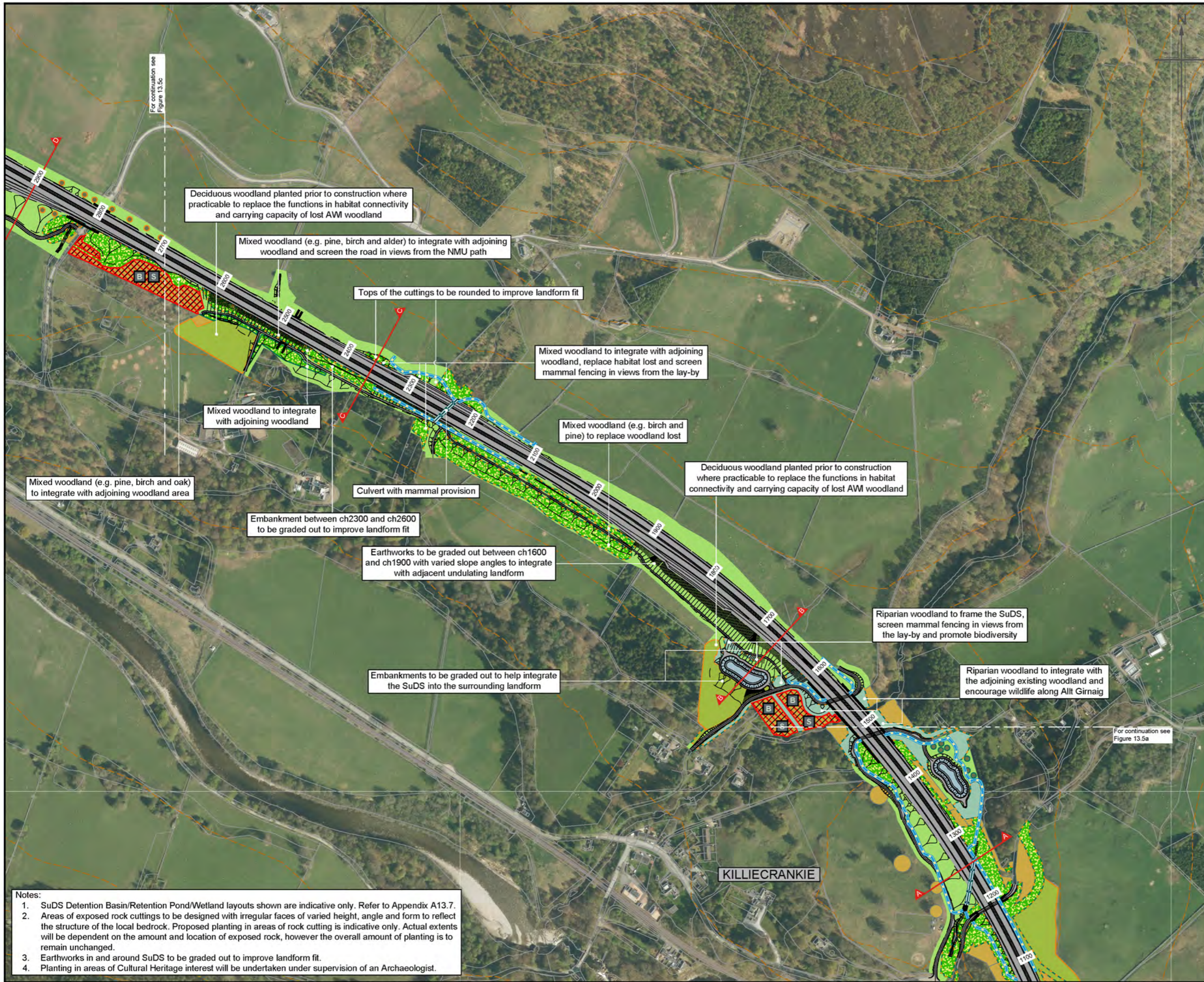
Drawing Status	WORK IN PROGRESS	DO NOT SCALE
Scale	1:5000 @ A3	
Jacobs No	B2140005	
BIM No	AS905-JAC-ELS-Z_ZZZZ_EM-DR-LA-0001	
Drawing number	Figure 13.5a	Rev 0

- Notes:**
1. SuDS Detention Basin/Retention Pond/Wetland layouts shown are indicative only. Refer to Appendix A13.7.
  2. Areas of exposed rock cuttings to be designed with irregular faces of varied height, angle and form to reflect the structure of the local bedrock. Proposed planting in areas of rock cutting is indicative only. Actual extents will be dependent on the amount and location of exposed rock, however the overall amount of planting is to remain unchanged.
  3. Earthworks in and around SuDS to be graded out to improve landform fit.
  4. Planting in areas of Cultural Heritage interest will be undertaken under supervision of an Archaeologist.



This drawing is not to be used in whole or in part other than for the intended purpose and project as defined on this drawing. Refer to the contract for full terms and conditions.

Figure 13.5b



**Legend**

- Proposed Scheme (DMRB Stage 3 Design)
- SuDS Detention Basin (Green)
- SuDS Retention Pond / Wetland (Blue)
- Existing Vegetation to be Retained (inside CPO)
- Existing Contours (5m Intervals)
- Cross Section Locations (see Figure 13.6)

**Landscape and Ecological Mitigation Proposals**

- Landscape Planting Proposals
- Ecological Planting Proposals
- Ecological and Landscape Planting Proposals
- Deciduous Woodland
- Mixed Woodland
- Riparian Woodland
- Scrub
- Individual Trees
- Heath
- Species Rich Grassland
- Wet Grassland Mix
- Visibility Splay Mix
- Potential Return to Agriculture
- Bat Mitigation Area (woodland to be retained) for provision of boxes
- Red Squirrel & Bat Mitigation Area (woodland to be retained) for provision of boxes
- Dry Mammal Underpass
- Culvert with mammal provision (see individual labels)
- Otter Resistant Fencing
- Badger Resistant Fencing
- Proposed Hibernacula Locations

0	NOV 2017	ES Publication	SDVSHF	MK	ML	AG
Rev	Rev. Date	Purpose of revision	Orig/Dwn	Check'd	Rev'd	Appr'd

**JACOBS**  
 95 Bothwell Street, Glasgow, G2 7HX, UK.  
 Tel: +44(0)141 243 8000  
 www.jacobs.com

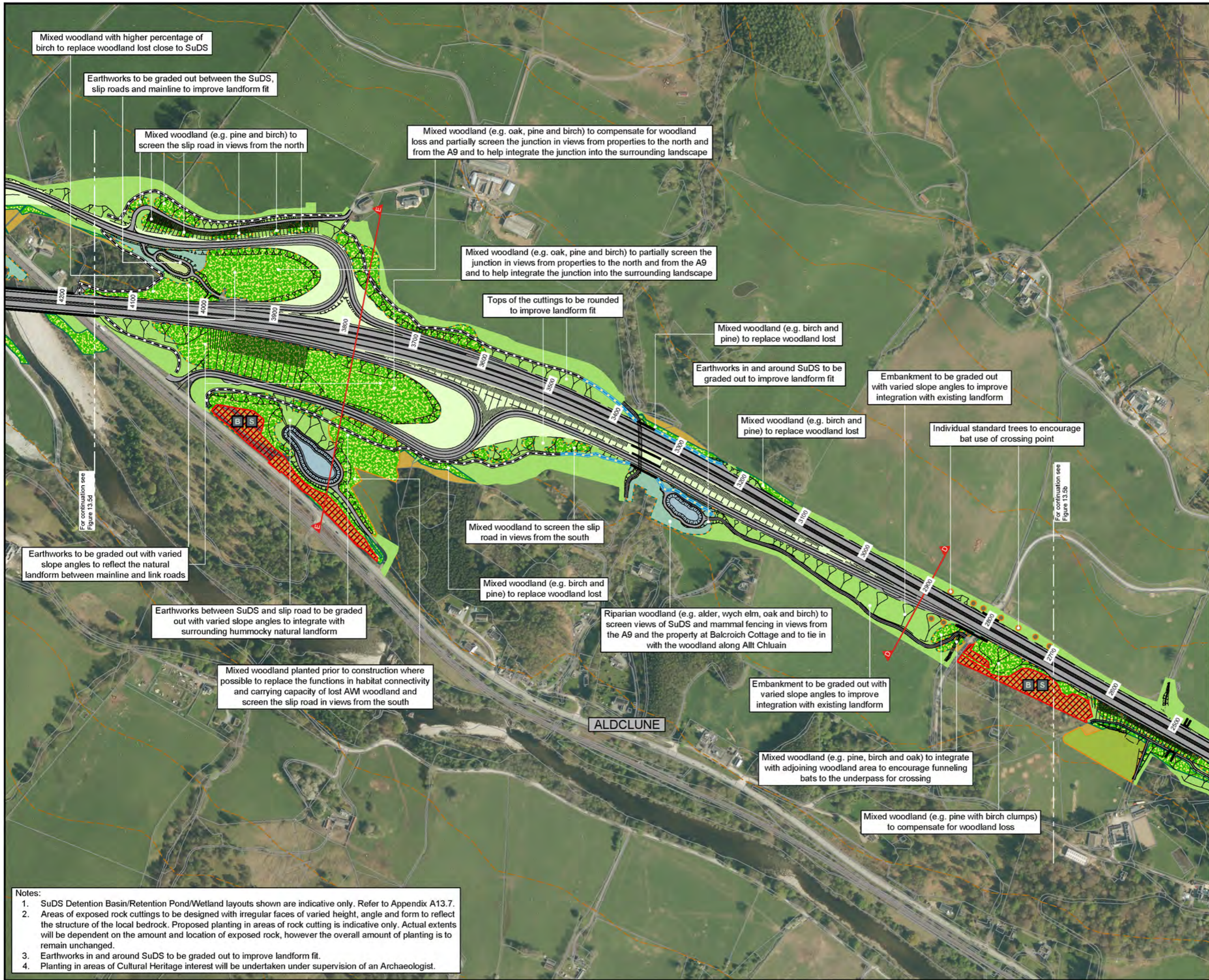


Environmental Statement  
 Landscape and Ecological  
 Mitigation

Drawing Status	WORK IN PROGRESS	DO NOT SCALE
Scale	1:5000 @ A3	
Jacobs No	B2140005	
BIM No	AGP05-JAC-ELS-Z_ZZZZ_EM-DR-LA-0001	
Drawing number	Figure 13.5b	Rev 0

- Notes:**
1. SuDS Detention Basin/Retention Pond/Wetland layouts shown are indicative only. Refer to Appendix A13.7.
  2. Areas of exposed rock cuttings to be designed with irregular faces of varied height, angle and form to reflect the structure of the local bedrock. Proposed planting in areas of rock cutting is indicative only. Actual extents will be dependent on the amount and location of exposed rock, however the overall amount of planting is to remain unchanged.
  3. Earthworks in and around SuDS to be graded out to improve landform fit.
  4. Planting in areas of Cultural Heritage interest will be undertaken under supervision of an Archaeologist.

Figure 13.5c



**Legend**

- Proposed Scheme (DMRB Stage 3 Design)
- SuDS Detention Basin (Green)
- SuDS Retention Pond / Wetland (Blue)
- Existing Vegetation to be Retained (inside CPO)
- Existing Contours (5m Intervals)
- Cross Section Locations (see Figure 13.6)

**Landscape and Ecological Mitigation Proposals**

- Landscape Planting Proposals
- Ecological Planting Proposals
- Ecological and Landscape Planting Proposals
- Deciduous Woodland
- Mixed Woodland
- Riparian Woodland
- Scrub
- Individual Trees
- Heath
- Species Rich Grassland
- Wet Grassland Mix
- Visibility Splay Mix
- Potential Return to Agriculture
- Bat Mitigation Area (woodland to be retained) for provision of boxes
- Red Squirrel & Bat Mitigation Area (woodland to be retained) for provision of boxes
- Dry Mammal Underpass
- Culvert with mammal provision (see individual labels)
- Otter Resistant Fencing
- Badger Resistant Fencing
- Proposed Hibernacula Locations

0	NOV 2017	ES Publication	SCVSHF	MK	ML	AG
Rev	Rev Date	Purpose of revision	Orig/Dwn	Check'd	Rev'd	Appr'd

**JACOBS**  
 95 Bothwell Street, Glasgow, G2 7HX, UK.  
 Tel: +44(0)141 243 8000  
 www.jacobs.com



Environmental Statement  
 Landscape and Ecological  
 Mitigation

Drawing Status	WORK IN PROGRESS	DO NOT SCALE
Scale	1:5000 @ A3	
Jacobs No.	B2140005	
BIM No.	AGP05-JAC-ELS-Z_ZZZZ_EM-DR-LA-0001	
Drawing number	Figure 13.5c	Rev 0

- Notes:**
1. SuDS Detention Basin/Retention Pond/Wetland layouts shown are indicative only. Refer to Appendix A13.7.
  2. Areas of exposed rock cuttings to be designed with irregular faces of varied height, angle and form to reflect the structure of the local bedrock. Proposed planting in areas of rock cutting is indicative only. Actual extents will be dependent on the amount and location of exposed rock, however the overall amount of planting is to remain unchanged.
  3. Earthworks in and around SuDS to be graded out to improve landform fit.
  4. Planting in areas of Cultural Heritage interest will be undertaken under supervision of an Archaeologist.

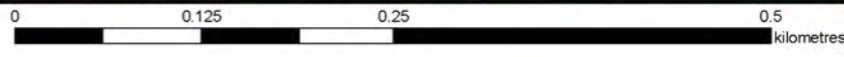
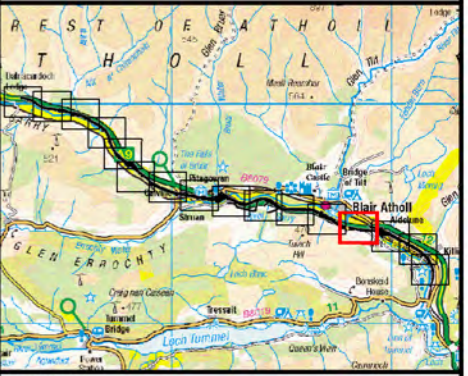


Figure 13.5d

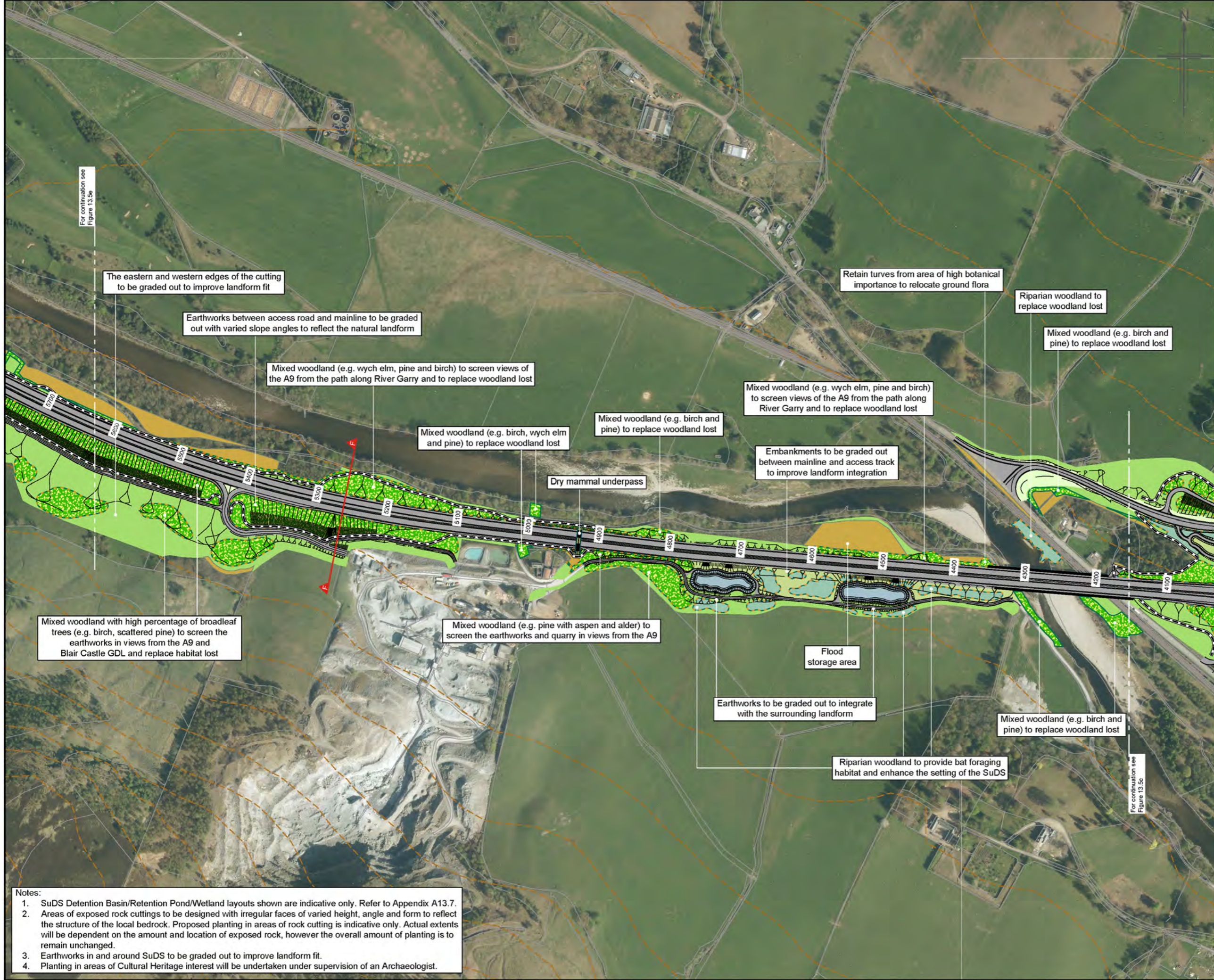


**Legend**

- Proposed Scheme (DMRB Stage 3 Design)
- SuDS Detention Basin (Green)
- SuDS Retention Pond / Wetland (Blue)
- Existing Vegetation to be Retained (inside CPO)
- Existing Contours (5m Intervals)
- Cross Section Locations (see Figure 13.6)

**Landscape and Ecological Mitigation Proposals**

- Landscape Planting Proposals
- Ecological Planting Proposals
- Ecological and Landscape Planting Proposals
- Deciduous Woodland
- Mixed Woodland
- Riparian Woodland
- Scrub
- Individual Trees
- Heath
- Species Rich Grassland
- Wet Grassland Mix
- Visibility Splay Mix
- Potential Return to Agriculture
- Bat Mitigation Area (woodland to be retained) for provision of boxes
- Red Squirrel & Bat Mitigation Area (woodland to be retained) for provision of boxes
- Dry Mammal Underpass
- Culvert with mammal provision (see individual labels)
- Otter Resistant Fencing
- Badger Resistant Fencing
- Proposed Hibernacula Locations



The eastern and western edges of the cutting to be graded out to improve landform fit

Earthworks between access road and mainline to be graded out with varied slope angles to reflect the natural landform

Mixed woodland (e.g. wych elm, pine and birch) to screen views of the A9 from the path along River Garry and to replace woodland lost

Mixed woodland (e.g. birch, wych elm and pine) to replace woodland lost

Mixed woodland (e.g. birch and pine) to replace woodland lost

Mixed woodland (e.g. wych elm, pine and birch) to screen views of the A9 from the path along River Garry and to replace woodland lost

Embankments to be graded out between mainline and access track to improve landform integration

Mixed woodland (e.g. birch and pine) to replace woodland lost

Riparian woodland to replace woodland lost

Retain turves from area of high botanical importance to relocate ground flora

Dry mammal underpass

Mixed woodland with high percentage of broadleaf trees (e.g. birch, scattered pine) to screen the earthworks in views from the A9 and Blair Castle GDL and replace habitat lost

Mixed woodland (e.g. pine with aspen and alder) to screen the earthworks and quarry in views from the A9

Flood storage area

Earthworks to be graded out to integrate with the surrounding landform

Mixed woodland (e.g. birch and pine) to replace woodland lost

Riparian woodland to provide bat foraging habitat and enhance the setting of the SuDS

- Notes:**
- SuDS Detention Basin/Retention Pond/Wetland layouts shown are indicative only. Refer to Appendix A13.7.
  - Areas of exposed rock cuttings to be designed with irregular faces of varied height, angle and form to reflect the structure of the local bedrock. Proposed planting in areas of rock cutting is indicative only. Actual extents will be dependent on the amount and location of exposed rock, however the overall amount of planting is to remain unchanged.
  - Earthworks in and around SuDS to be graded out to improve landform fit.
  - Planting in areas of Cultural Heritage interest will be undertaken under supervision of an Archaeologist.

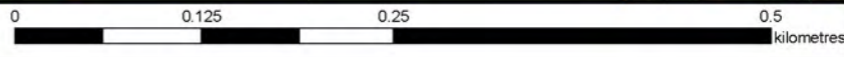
Rev	Rev. Date	Purpose of revision	Orig/Dwn	Check'd	Rev'd	Appr'd
0	NOV 2017	ES Publication	SDVSHF	MK	ML	AG

**JACOBS**  
 95 Bothwell Street, Glasgow, G2 7HX, UK.  
 Tel: +44(0)141 243 8000  
 www.jacobs.com



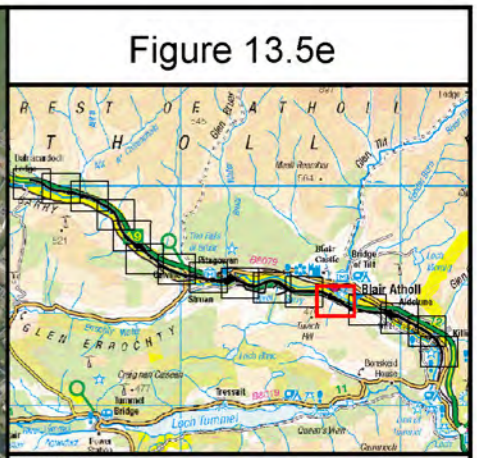
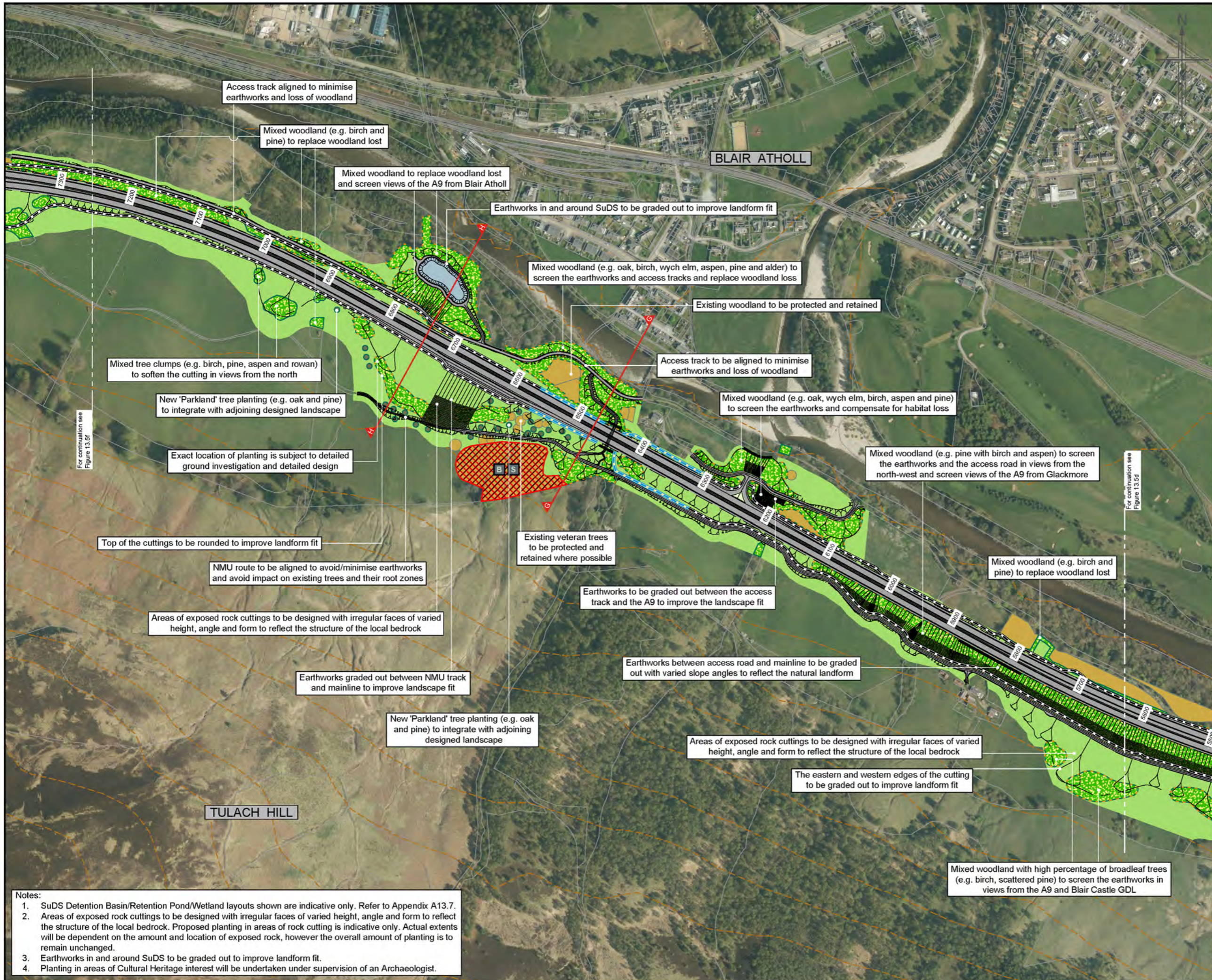
Environmental Statement  
 Landscape and Ecological  
 Mitigation

Drawing Status	WORK IN PROGRESS	DO NOT SCALE
Scale	1:5000 @ A3	
Jacobs No	B2140005	
BM No	AGP05-JAC-ELS-Z_ZZZZ_EM-DR-LA-0001	
Drawing number	Figure 13.5d	Rev 0



This drawing is not to be used in whole or in part other than for the intended purpose and project as defined on this drawing. Refer to the contract for full terms and conditions.

Figure 13.5e



**Legend**

- Proposed Scheme (DMRB Stage 3 Design)
- SuDS Detention Basin (Green)
- SuDS Retention Pond / Wetland (Blue)
- Existing Vegetation to be Retained (inside CPO)
- Existing Contours (5m Intervals)
- Cross Section Locations (see Figure 13.6)

**Landscape and Ecological Mitigation Proposals**

- Landscape Planting Proposals
- Ecological Planting Proposals
- Ecological and Landscape Planting Proposals
- Deciduous Woodland
- Mixed Woodland
- Riparian Woodland
- Scrub
- Individual Trees
- Heath
- Species Rich Grassland
- Wet Grassland Mix
- Visibility Splay Mix
- Potential Return to Agriculture
- Bat Mitigation Area (woodland to be retained) for provision of boxes
- Red Squirrel & Bat Mitigation Area (woodland to be retained) for provision of boxes
- Dry Mammal Underpass
- Culvert with mammal provision (see individual labels)
- Otter Resistant Fencing
- Badger Resistant Fencing
- Proposed Hibernacula Locations

0	NOV 2017	ES Publication	SCVSHF	MK	ML	AG
Rev	Rev. Date	Purpose of revision	Orig/Dwn	Check'd	Rev'd	Appr'd

**JACOBS**  
 95 Bothwell Street, Glasgow, G2 7HX, UK.  
 Tel: +44(0)141 243 8000  
 www.jacobs.com

**TRANSPORT SCOTLAND**  
 COMHARAL ALBA

**A9 DUALLING**  
 PERTH TO INVERNESS  
 Killiecrankie to Glen Garry

**Environmental Statement**  
**Landscape and Ecological Mitigation**

Drawing Status: WORK IN PROGRESS DO NOT SCALE  
 Scale: 1:5000 @ A3  
 Jacobs No: B2140005  
 BM No: A9P05-JAC-ELS-Z\_ZZZZ\_EM-DR-LA-0001  
 Drawing number: Figure 13.5e Rev 0

- Notes:**
1. SuDS Detention Basin/Retention Pond/Wetland layouts shown are indicative only. Refer to Appendix A13.7.
  2. Areas of exposed rock cuttings to be designed with irregular faces of varied height, angle and form to reflect the structure of the local bedrock. Proposed planting in areas of rock cutting is indicative only. Actual extents will be dependent on the amount and location of exposed rock, however the overall amount of planting is to remain unchanged.
  3. Earthworks in and around SuDS to be graded out to improve landform fit.
  4. Planting in areas of Cultural Heritage interest will be undertaken under supervision of an Archaeologist.

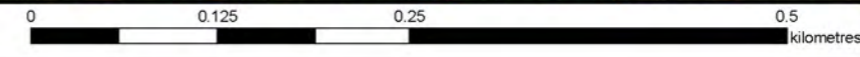


Figure 13.5f

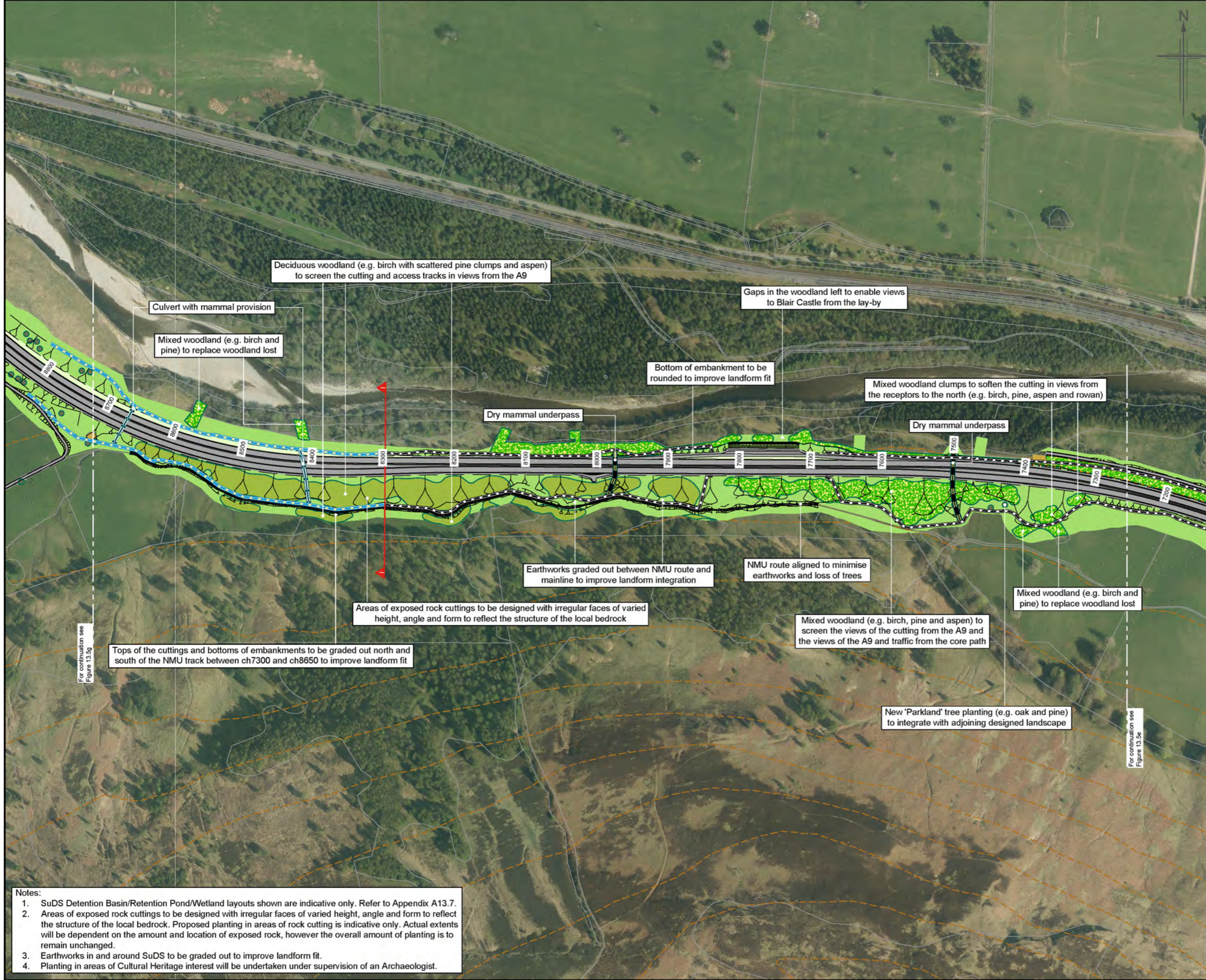


**Legend**

- Proposed Scheme (DMRB Stage 3 Design)
- SuDS Detention Basin (Green)
- SuDS Retention Pond / Wetland (Blue)
- Existing Vegetation to be Retained (inside CPO)
- Existing Contours (5m Intervals)
- Cross Section Locations (see Figure 13.6)

**Landscape and Ecological Mitigation Proposals**

- Landscape Planting Proposals
- Ecological Planting Proposals
- Ecological and Landscape Planting Proposals
- Deciduous Woodland
- Mixed Woodland
- Riparian Woodland
- Scrub
- Individual Trees
- Heath
- Species Rich Grassland
- Wet Grassland Mix
- Visibility Splay Mix
- Potential Return to Agriculture
- Bat Mitigation Area (woodland to be retained) for provision of boxes
- Red Squirrel & Bat Mitigation Area (woodland to be retained) for provision of boxes
- Dry Mammal Underpass
- Culvert with mammal provision (see individual labels)
- Otter Resistant Fencing
- Badger Resistant Fencing
- Proposed Hibernacula Locations



For continuation see Figure 13.5g

For continuation see Figure 13.5e

- Notes:**
1. SuDS Detention Basin/Retention Pond/Wetland layouts shown are indicative only. Refer to Appendix A13.7.
  2. Areas of exposed rock cuttings to be designed with irregular faces of varied height, angle and form to reflect the structure of the local bedrock. Proposed planting in areas of rock cutting is indicative only. Actual extents will be dependent on the amount and location of exposed rock, however the overall amount of planting is to remain unchanged.
  3. Earthworks in and around SuDS to be graded out to improve landform fit.
  4. Planting in areas of Cultural Heritage interest will be undertaken under supervision of an Archaeologist.

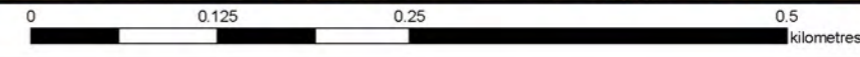
0	NOV 2017	ES Publication	SDVSHF	MK	ML	AG
Rev	Rev. Date	Purpose of revision	Orig/Dwn	Check'd	Rev'd	Appr'd

**JACOBS**  
 95 Bothwell Street, Glasgow, G2 7HX, UK.  
 Tel: +44(0)141 243 8000  
 www.jacobs.com



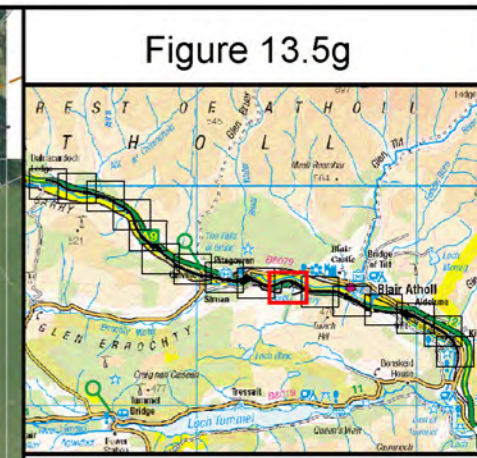
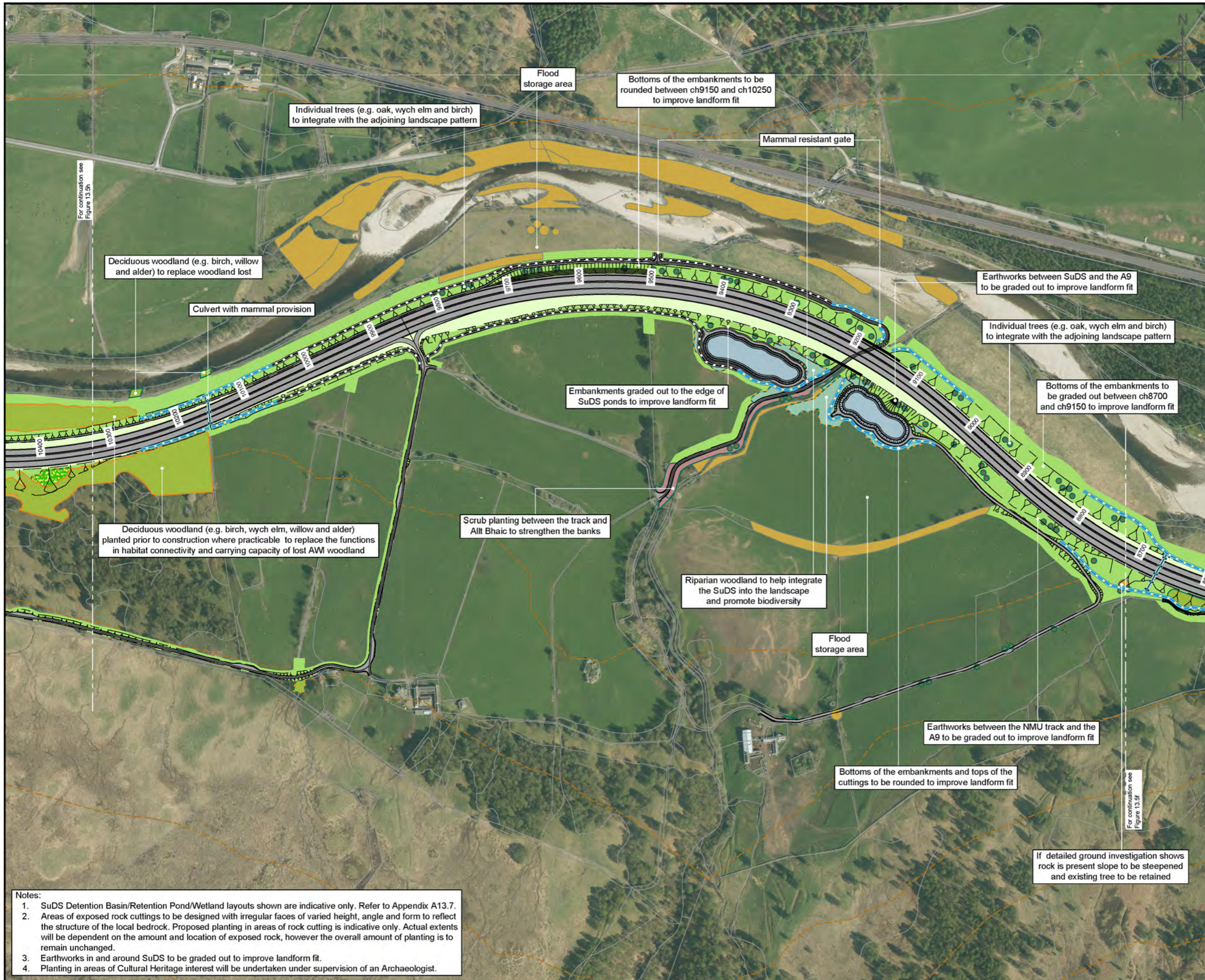
**Environmental Statement  
 Landscape and Ecological  
 Mitigation**

Drawing Status	WORK IN PROGRESS	DO NOT SCALE
Scale	1:5000 @ A3	
Jacobs No	B2140005	
BIM No	AGP05-JAC-ELS-Z_ZZZZ_EM-DR-LA-0001	
Drawing number	Figure 13.5f	Rev 0



This drawing is not to be used in whole or in part other than for the intended purpose and project as defined on this drawing. Refer to the contract for full terms and conditions.

Figure 13.5g



**Legend**

- Proposed Scheme (DMRB Stage 3 Design)
- SuDS Detention Basin (Green)
- SuDS Retention Pond / Wetland (Blue)
- Existing Vegetation to be Retained (inside CPO)
- Existing Contours (5m Intervals)
- Cross Section Locations (see Figure 13.6)

**Landscape and Ecological Mitigation Proposals**

- Landscape Planting Proposals
- Ecological Planting Proposals
- Ecological and Landscape Planting Proposals
- Deciduous Woodland
- Mixed Woodland
- Riparian Woodland
- Scrub
- Individual Trees
- Heath
- Species Rich Grassland
- Wet Grassland Mix
- Visibility Splay Mix
- Potential Return to Agriculture
- Bat Mitigation Area (woodland to be retained) for provision of boxes
- Red Squirrel & Bat Mitigation Area (woodland to be retained) for provision of boxes
- Dry Mammal Underpass
- Culvert with mammal provision (see individual labels)
- Otter Resistant Fencing
- Badger Resistant Fencing
- Proposed Hibernacula Locations

0	NOV 2017	ES Publication	SDVSHF	Mk	ML	AG
Rev	Rev. Date	Purpose of revision	Orig/Dwn	Check'd	Rev'd	Appr'd

**JACOBS**  
 95 Bothwell Street, Glasgow, G2 7HX, UK.  
 Tel: +44(0)141 243 8000  
 www.jacobs.com

Client  
  
 TRANSPORT SCOTLAND  
 COMHNAID ALBA

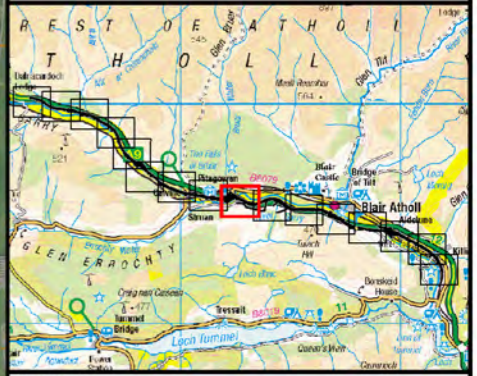
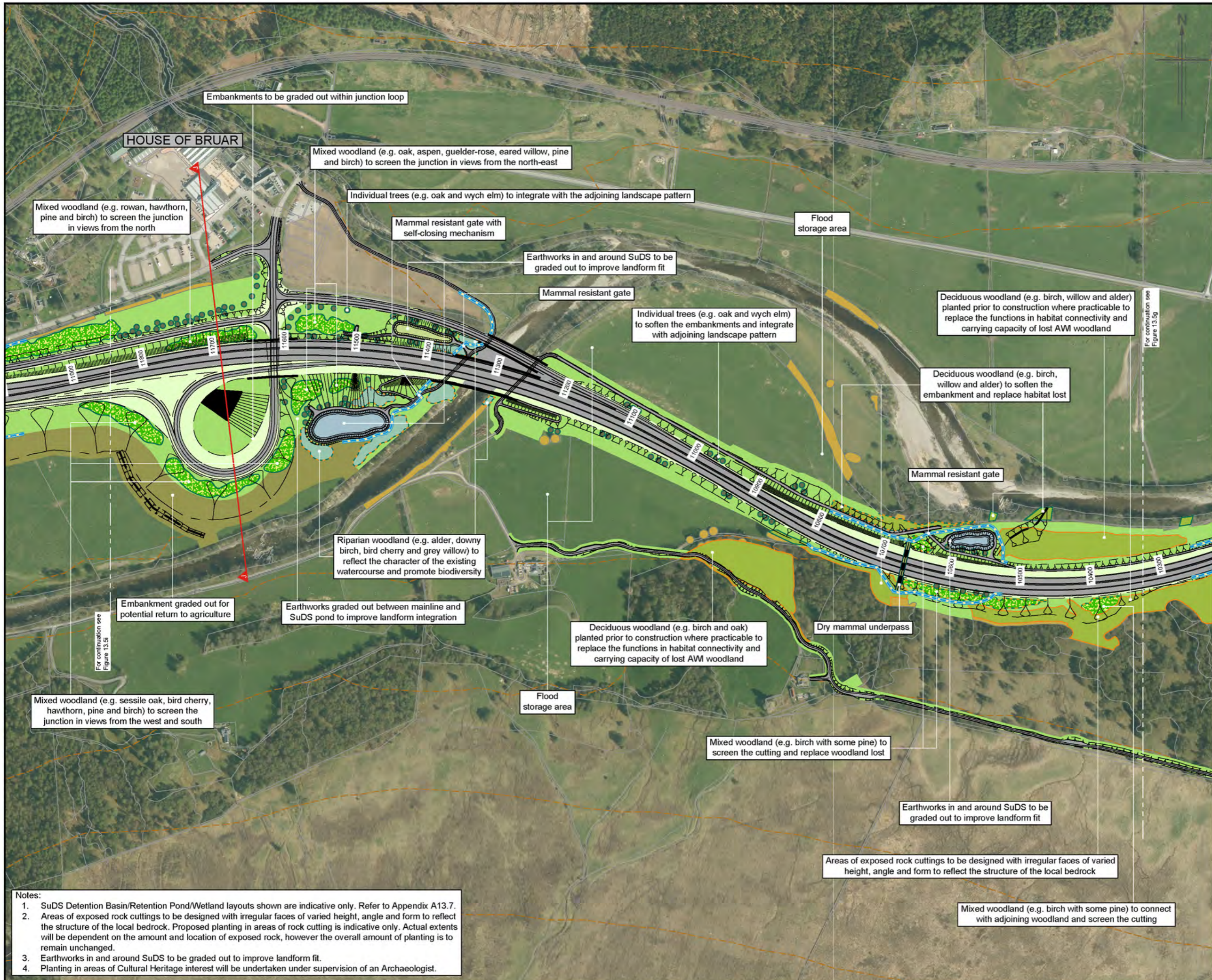
Project  
  
 A9 DUALLING  
 PERTH TO INVERNESS  
 Killiecrankie to Glen Garry

Drawing title  
**Environmental Statement  
 Landscape and Ecological  
 Mitigation**

Drawing Status: WORK IN PROGRESS DO NOT SCALE  
 Scale: 1:5000 @ A3  
 Jacobs No: B2140005  
 BM No: A9P05-JAC-ELS-Z\_ZZZZ\_EM-DR-LA-0001  
 Drawing number: **Figure 13.5g** Rev: **0**

- Notes:**
1. SuDS Detention Basin/Retention Pond/Wetland layouts shown are indicative only. Refer to Appendix A13.7.
  2. Areas of exposed rock cuttings to be designed with irregular faces of varied height, angle and form to reflect the structure of the local bedrock. Proposed planting in areas of rock cutting is indicative only. Actual extents will be dependent on the amount and location of exposed rock, however the overall amount of planting is to remain unchanged.
  3. Earthworks in and around SuDS to be graded out to improve landform fit.
  4. Planting in areas of Cultural Heritage interest will be undertaken under supervision of an Archaeologist.

Figure 13.5h



**Legend**

- Proposed Scheme (DMRB Stage 3 Design)
- SuDS Detention Basin (Green)
- SuDS Retention Pond / Wetland (Blue)
- Existing Vegetation to be Retained (inside CPO)
- Existing Contours (5m Intervals)
- Cross Section Locations (see Figure 13.6)

**Landscape and Ecological Mitigation Proposals**

- Landscape Planting Proposals
- Ecological Planting Proposals
- Ecological and Landscape Planting Proposals
- Deciduous Woodland
- Mixed Woodland
- Riparian Woodland
- Scrub
- Individual Trees
- Heath
- Species Rich Grassland
- Wet Grassland Mix
- Visibility Splay Mix
- Potential Return to Agriculture
- Bat Mitigation Area (woodland to be retained) for provision of boxes
- Red Squirrel & Bat Mitigation Area (woodland to be retained) for provision of boxes
- Dry Mammal Underpass
- Culvert with mammal provision (see individual labels)
- Otter Resistant Fencing
- Badger Resistant Fencing
- Proposed Hibernacula Locations

Rev	Rev. Date	Purpose of revision	Orig/Dwn	Check'd	Rev'd	Appr'd
0	NOV 2017	ES Publication	SDVSHF	MK	ML	AG

**JACOBS**  
 95 Bothwell Street, Glasgow, G2 7HX, UK.  
 Tel: +44(0)141 243 8000  
 www.jacobs.com

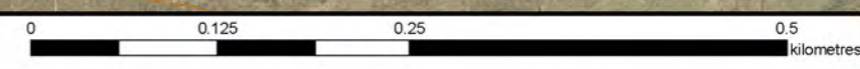
Client  
**TRANSPORT SCOTLAND**  
 COMHANNAL ALBA

Project  
**A9 DUALLING**  
 PERTH TO INVERNESS  
 Killiecrankie to Glen Garry

Drawing title  
**Environmental Statement**  
**Landscape and Ecological**  
**Mitigation**

Drawing Status	WORK IN PROGRESS	DO NOT SCALE
Scale	1:5000 @ A3	
Jacobs No.	B2140005	
BIM No.	A9P05-JAC-ELS-Z_ZZZZ_EM-DR-LA-0001	
Drawing number	Figure 13.5h	Rev 0

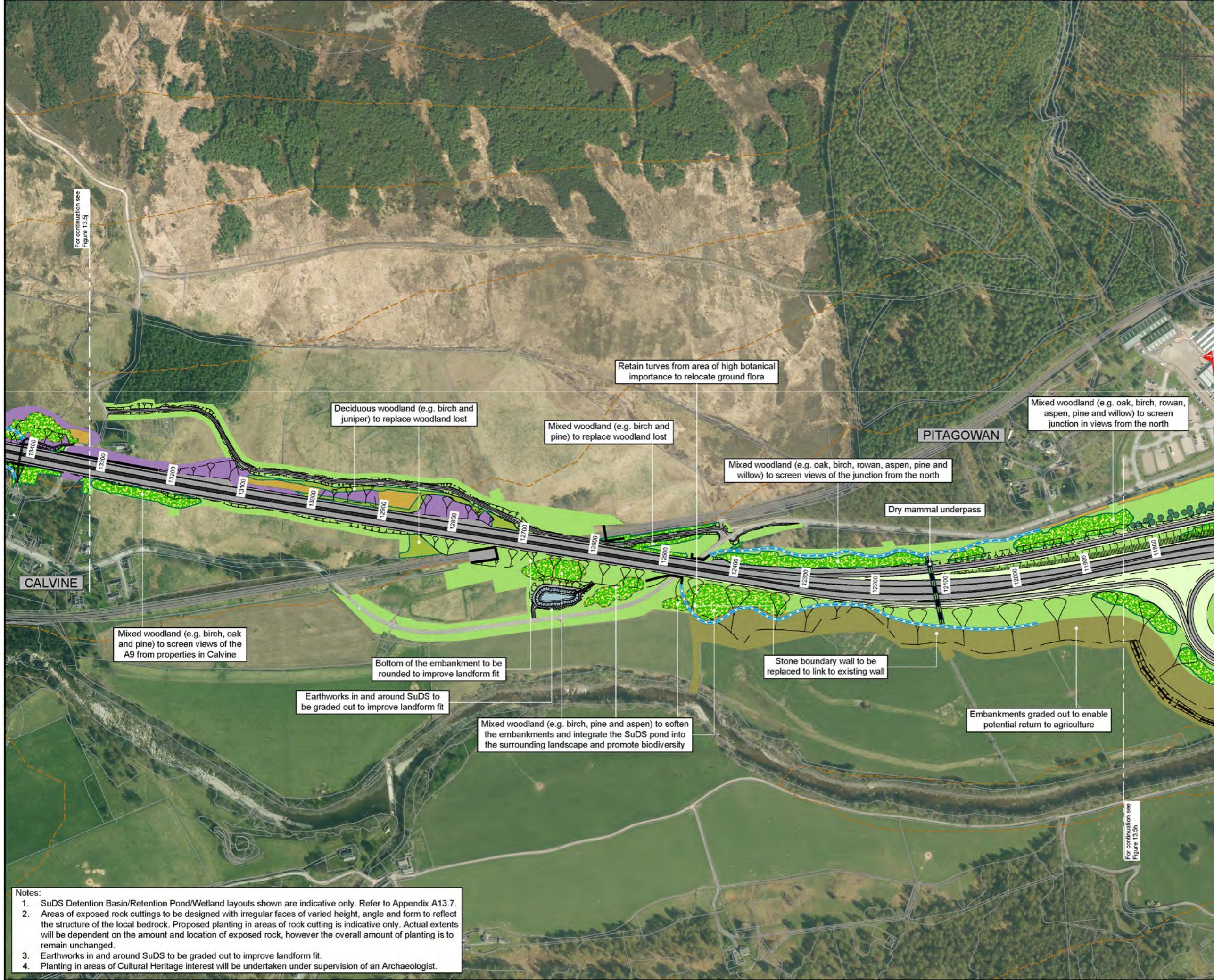
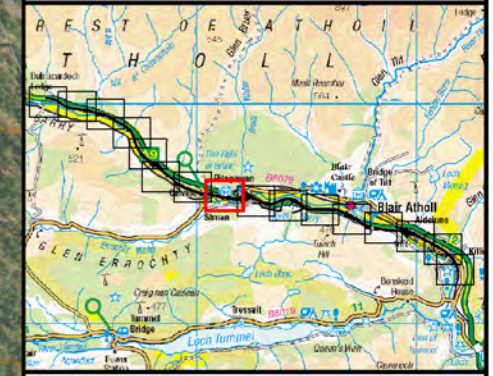
- Notes:**
1. SuDS Detention Basin/Retention Pond/Wetland layouts shown are indicative only. Refer to Appendix A13.7.
  2. Areas of exposed rock cuttings to be designed with irregular faces of varied height, angle and form to reflect the structure of the local bedrock. Proposed planting in areas of rock cutting is indicative only. Actual extents will be dependent on the amount and location of exposed rock, however the overall amount of planting is to remain unchanged.
  3. Earthworks in and around SuDS to be graded out to improve landform fit.
  4. Planting in areas of Cultural Heritage interest will be undertaken under supervision of an Archaeologist.



This drawing is not to be used in whole or in part other than for the intended purpose and project as defined on this drawing. Refer to the contract for full terms and conditions.



Figure 13.5i



**Legend**

- Proposed Scheme (DMRB Stage 3 Design)
- SuDS Detention Basin (Green)
- SuDS Retention Pond / Wetland (Blue)
- Existing Vegetation to be Retained (inside CPO)
- Existing Contours (5m Intervals)
- Cross Section Locations (see Figure 13.6)

**Landscape and Ecological Mitigation Proposals**

- Landscape Planting Proposals
- Ecological Planting Proposals
- Ecological and Landscape Planting Proposals
- Deciduous Woodland
- Mixed Woodland
- Riparian Woodland
- Scrub
- Individual Trees
- Heath
- Species Rich Grassland
- Wet Grassland Mix
- Visibility Splay Mix
- Potential Return to Agriculture
- Bat Mitigation Area (woodland to be retained) for provision of boxes
- Red Squirrel & Bat Mitigation Area (woodland to be retained) for provision of boxes
- Dry Mammal Underpass
- Culvert with mammal provision (see individual labels)
- Otter Resistant Fencing
- Badger Resistant Fencing
- Proposed Hibernacula Locations

0	NOV 2017	ES Publication	SDVSHF	MK	ML	AG
Rev	Rev Date	Purpose of revision	Orig/Dwn	Check'd	Rev'd	Appr'd

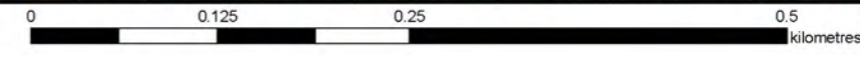
**JACOBS**  
 95 Bothwell Street, Glasgow, G2 7HX, UK.  
 Tel: +44(0)141 243 8000  
 www.jacobs.com



Environmental Statement  
 Landscape and Ecological  
 Mitigation

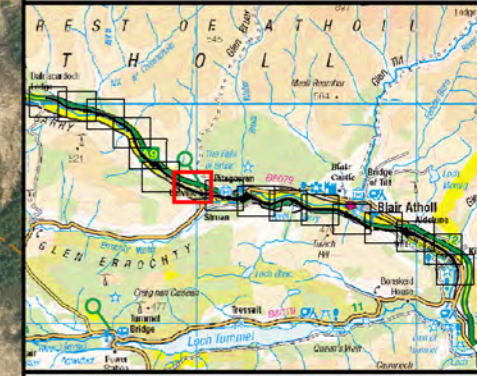
Drawing Status	WORK IN PROGRESS	DO NOT SCALE
Scale	1:5000 @ A3	
Jacobs No	B2140005	
BIM No	AGP05-JAC-ELS-Z_ZZZZ_EM-DR-LA-0001	
Drawing number	Figure 13.5i	Rev 0

- Notes:**
- SuDS Detention Basin/Retention Pond/Wetland layouts shown are indicative only. Refer to Appendix A13.7.
  - Areas of exposed rock cuttings to be designed with irregular faces of varied height, angle and form to reflect the structure of the local bedrock. Proposed planting in areas of rock cutting is indicative only. Actual extents will be dependent on the amount and location of exposed rock, however the overall amount of planting is to remain unchanged.
  - Earthworks in and around SuDS to be graded out to improve landform fit.
  - Planting in areas of Cultural Heritage interest will be undertaken under supervision of an Archaeologist.



This drawing is not to be used in whole or in part other than for the intended purpose and project as defined on this drawing. Refer to the contract for full terms and conditions.

Figure 13.5j

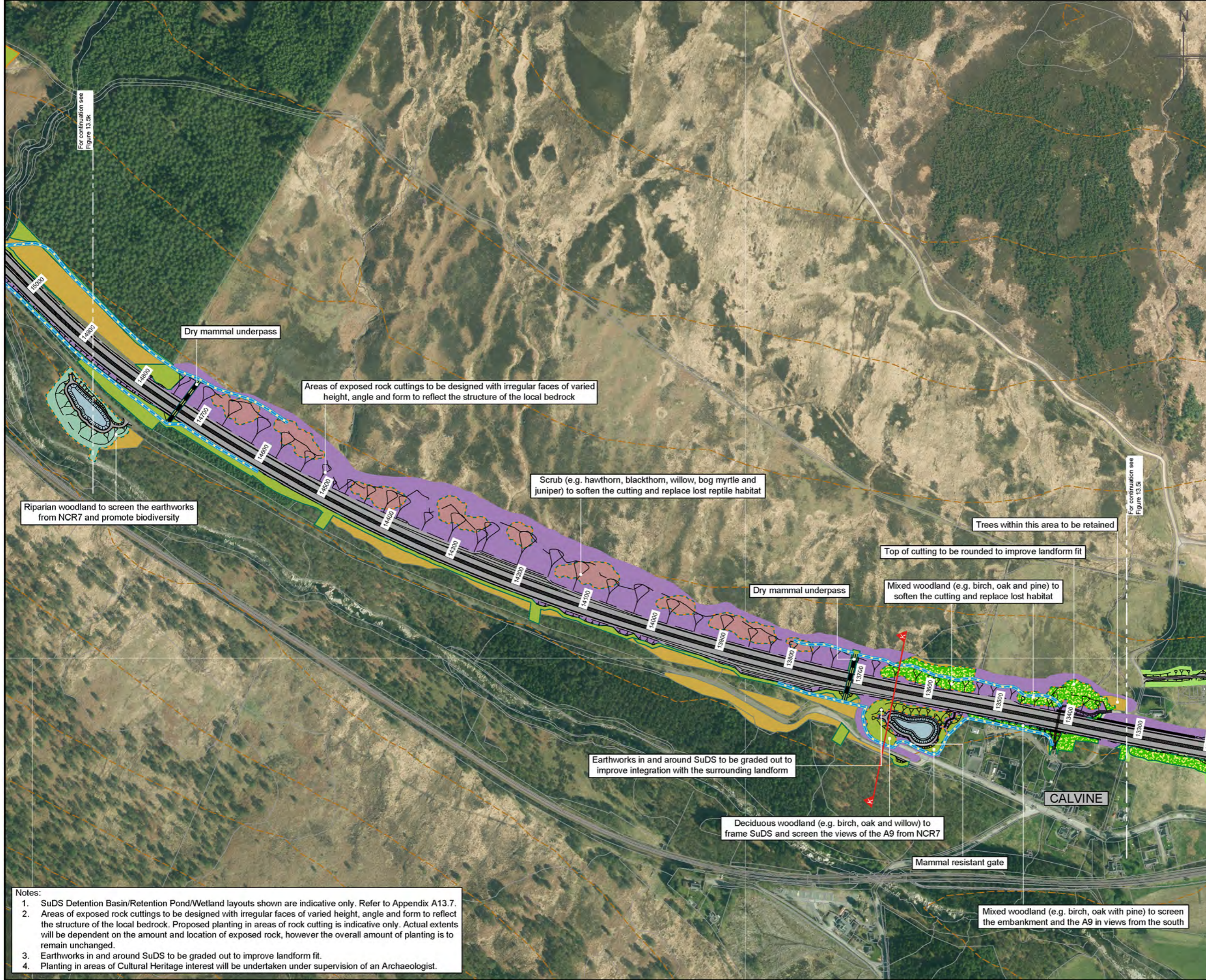


**Legend**

- Proposed Scheme (DMRB Stage 3 Design)
- SuDS Detention Basin (Green)
- SuDS Retention Pond / Wetland (Blue)
- Existing Vegetation to be Retained (inside CPO)
- Existing Contours (5m Intervals)
- Cross Section Locations (see Figure 13.6)

**Landscape and Ecological Mitigation Proposals**

- Landscape Planting Proposals
- Ecological Planting Proposals
- Ecological and Landscape Planting Proposals
- Deciduous Woodland
- Mixed Woodland
- Riparian Woodland
- Scrub
- Individual Trees
- Heath
- Species Rich Grassland
- Wet Grassland Mix
- Visibility Splay Mix
- Potential Return to Agriculture
- Bat Mitigation Area (woodland to be retained) for provision of boxes
- Red Squirrel & Bat Mitigation Area (woodland to be retained) for provision of boxes
- Dry Mammal Underpass
- Culvert with mammal provision (see individual labels)
- Otter Resistant Fencing
- Badger Resistant Fencing
- Proposed Hibernacula Locations



Riparian woodland to screen the earthworks from NCR7 and promote biodiversity

Dry mammal underpass

Areas of exposed rock cuttings to be designed with irregular faces of varied height, angle and form to reflect the structure of the local bedrock

Scrub (e.g. hawthorn, blackthorn, willow, bog myrtle and juniper) to soften the cutting and replace lost reptile habitat

Trees within this area to be retained

Top of cutting to be rounded to improve landform fit

Dry mammal underpass

Mixed woodland (e.g. birch, oak and pine) to soften the cutting and replace lost habitat

Earthworks in and around SuDS to be graded out to improve integration with the surrounding landform

Deciduous woodland (e.g. birch, oak and willow) to frame SuDS and screen the views of the A9 from NCR7

Mammal resistant gate

Mixed woodland (e.g. birch, oak with pine) to screen the embankment and the A9 in views from the south

- Notes:**
1. SuDS Detention Basin/Retention Pond/Wetland layouts shown are indicative only. Refer to Appendix A13.7.
  2. Areas of exposed rock cuttings to be designed with irregular faces of varied height, angle and form to reflect the structure of the local bedrock. Proposed planting in areas of rock cutting is indicative only. Actual extents will be dependent on the amount and location of exposed rock, however the overall amount of planting is to remain unchanged.
  3. Earthworks in and around SuDS to be graded out to improve landform fit.
  4. Planting in areas of Cultural Heritage interest will be undertaken under supervision of an Archaeologist.

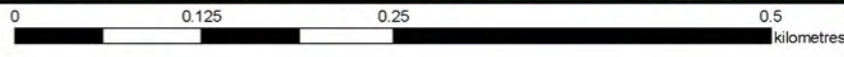
0	NOV 2017	ES Publication	SDVSHF	MK	ML	AG
Rev	Rev Date	Purpose of revision	Orig/Dwn	Check'd	Rev'd	Appr'd

**JACOBS**  
 95 Bothwell Street, Glasgow, G2 7HX, UK.  
 Tel: +44(0)141 243 8000  
 www.jacobs.com



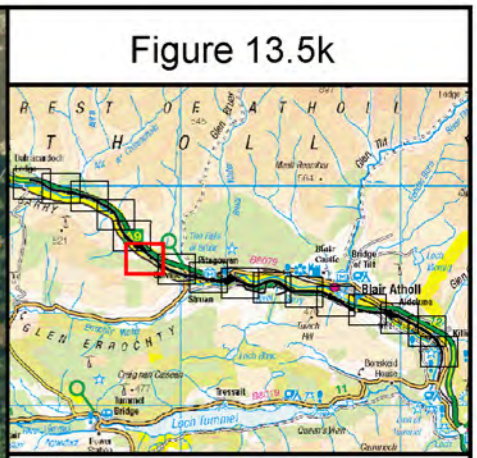
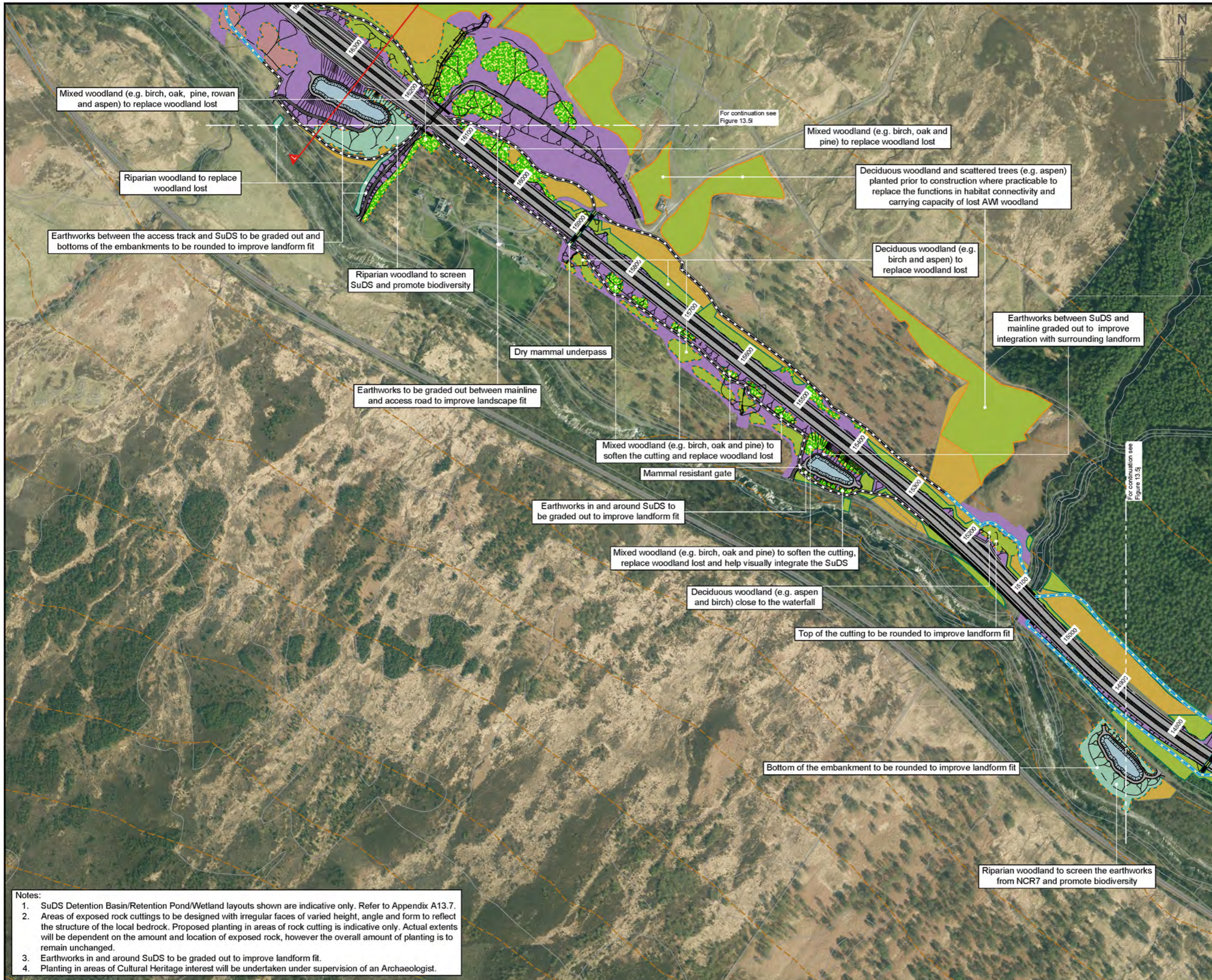
Environmental Statement  
 Landscape and Ecological  
 Mitigation

Drawing Status	WORK IN PROGRESS	DO NOT SCALE
Scale	1:5000 @ A3	
Jacobs No	B2140005	
BIM No	AGP05-JAC-ELS-Z_ZZZZ_EM-DR-LA-0001	
Drawing number	Figure 13.5j	Rev 0



This drawing is not to be used in whole or in part other than for the intended purpose and project as defined on this drawing. Refer to the contract for full terms and conditions.

Figure 13.5k



**Legend**

- Proposed Scheme (DMRB Stage 3 Design)
- SuDS Detention Basin (Green)
- SuDS Retention Pond / Wetland (Blue)
- Existing Vegetation to be Retained (inside CPO)
- Existing Contours (5m Intervals)
- Cross Section Locations (see Figure 13.6)

**Landscape and Ecological Mitigation Proposals**

- Landscape Planting Proposals
- Ecological Planting Proposals
- Ecological and Landscape Planting Proposals
- Deciduous Woodland
- Mixed Woodland
- Riparian Woodland
- Scrub
- Individual Trees
- Heath
- Species Rich Grassland
- Wet Grassland Mix
- Visibility Splay Mix
- Potential Return to Agriculture
- Bat Mitigation Area (woodland to be retained) for provision of boxes
- Red Squirrel & Bat Mitigation Area (woodland to be retained) for provision of boxes
- Dry Mammal Underpass
- Culvert with mammal provision (see individual labels)
- Otter Resistant Fencing
- Badger Resistant Fencing
- Proposed Hibernacula Locations

0	NOV 2017	ES Publication	SCVSHF	Mk	ML	AG
Rev	Rev. Date	Purpose of revision	Orig/Dwn	Check'd	Rev'd	Appr'd

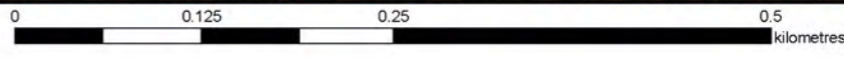
**JACOBS**  
 95 Bothwell Street, Glasgow, G2 7HX, UK.  
 Tel: +44(0)141 243 8000  
 www.jacobs.com



Environmental Statement  
 Landscape and Ecological  
 Mitigation

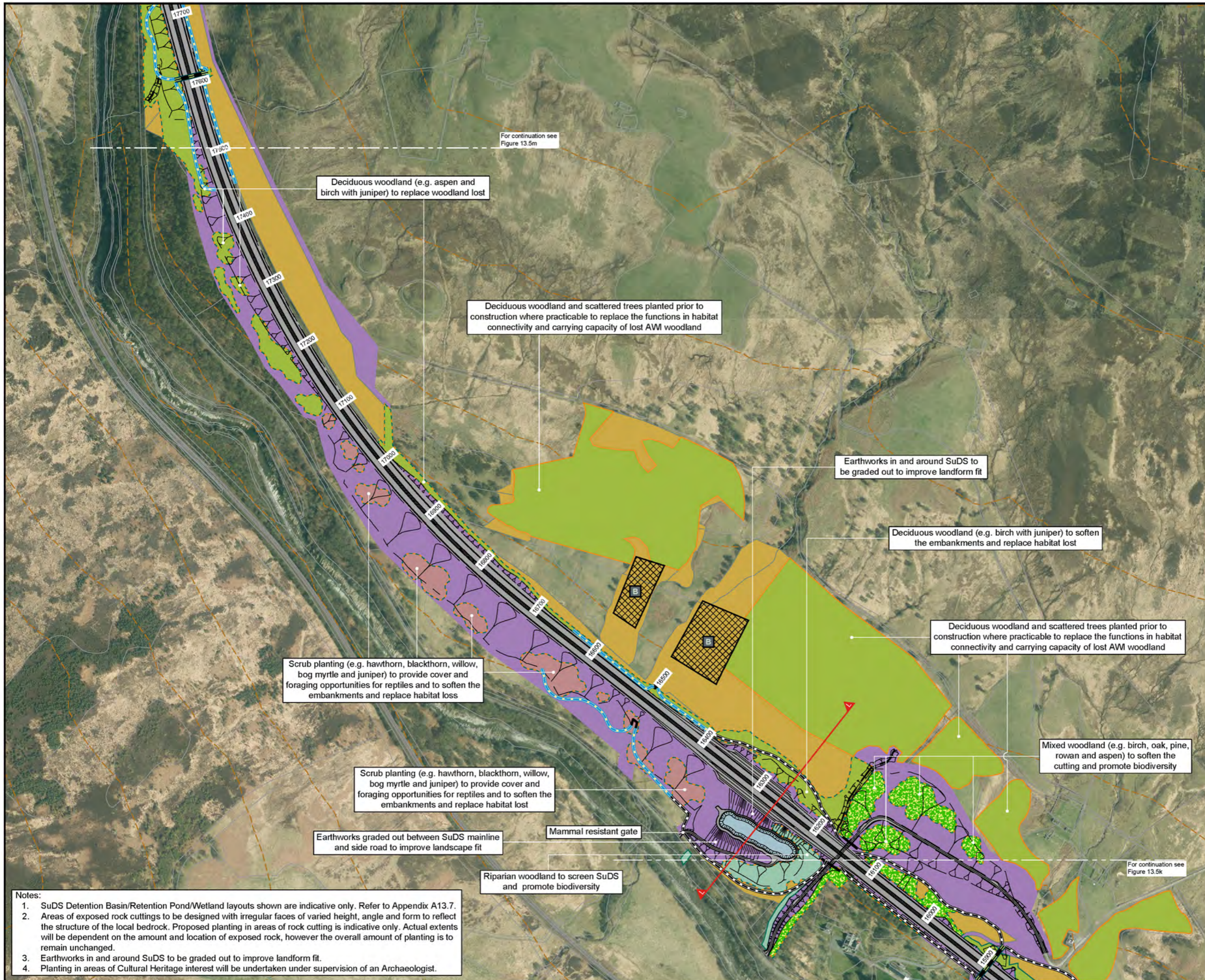
Drawing Status	WORK IN PROGRESS	Sheet 11 of 16
Scale	1:5000 @ A3	DO NOT SCALE
Jacobs No.	B2140005	
BIM No.	AGP05-JAC-ELS-Z_ZZZZ_EM-DR-LA-0001	
Drawing number	Figure 13.5k	Rev 0

- Notes:**
- SuDS Detention Basin/Retention Pond/Wetland layouts shown are indicative only. Refer to Appendix A13.7.
  - Areas of exposed rock cuttings to be designed with irregular faces of varied height, angle and form to reflect the structure of the local bedrock. Proposed planting in areas of rock cutting is indicative only. Actual extents will be dependent on the amount and location of exposed rock, however the overall amount of planting is to remain unchanged.
  - Earthworks in and around SuDS to be graded out to improve landform fit.
  - Planting in areas of Cultural Heritage interest will be undertaken under supervision of an Archaeologist.



This drawing is not to be used in whole or in part other than for the intended purpose and project as defined on this drawing. Refer to the contract for full terms and conditions.

Figure 13.5l



**Legend**

- Proposed Scheme (DMRB Stage 3 Design)
- SuDS Detention Basin (Green)
- SuDS Retention Pond / Wetland (Blue)
- Existing Vegetation to be Retained (inside CPO)
- Existing Contours (5m Intervals)
- Cross Section Locations (see Figure 13.6)

**Landscape and Ecological Mitigation Proposals**

- Landscape Planting Proposals
- Ecological Planting Proposals
- Ecological and Landscape Planting Proposals
- Deciduous Woodland
- Mixed Woodland
- Riparian Woodland
- Scrub
- Individual Trees
- Heath
- Species Rich Grassland
- Wet Grassland Mix
- Visibility Splay Mix
- Potential Return to Agriculture
- Bat Mitigation Area (woodland to be retained) for provision of boxes
- Red Squirrel & Bat Mitigation Area (woodland to be retained) for provision of boxes
- Dry Mammal Underpass
- Culvert with mammal provision (see individual labels)
- Otter Resistant Fencing
- Badger Resistant Fencing
- Proposed Hibernacula Locations

0	NOV 2017	ES Publication	SDVSHF	Mk	ML	AG
Rev	Rev Date	Purpose of revision	Orig/Dwn	Check'd	Rev'd	Appr'd

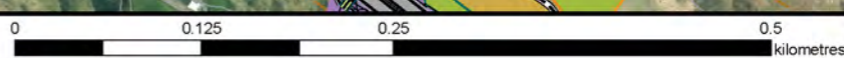
**JACOBS**  
 95 Bothwell Street, Glasgow, G2 7HX, UK.  
 Tel: +44(0)141 243 8000  
 www.jacobs.com



**Environmental Statement  
 Landscape and Ecological  
 Mitigation**

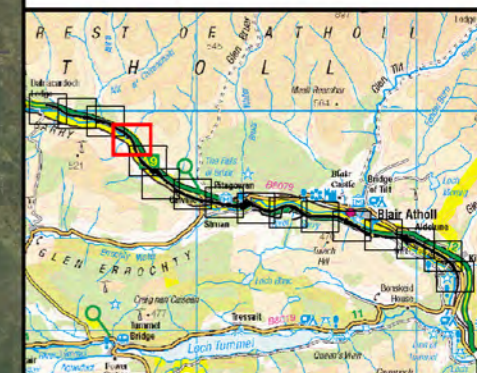
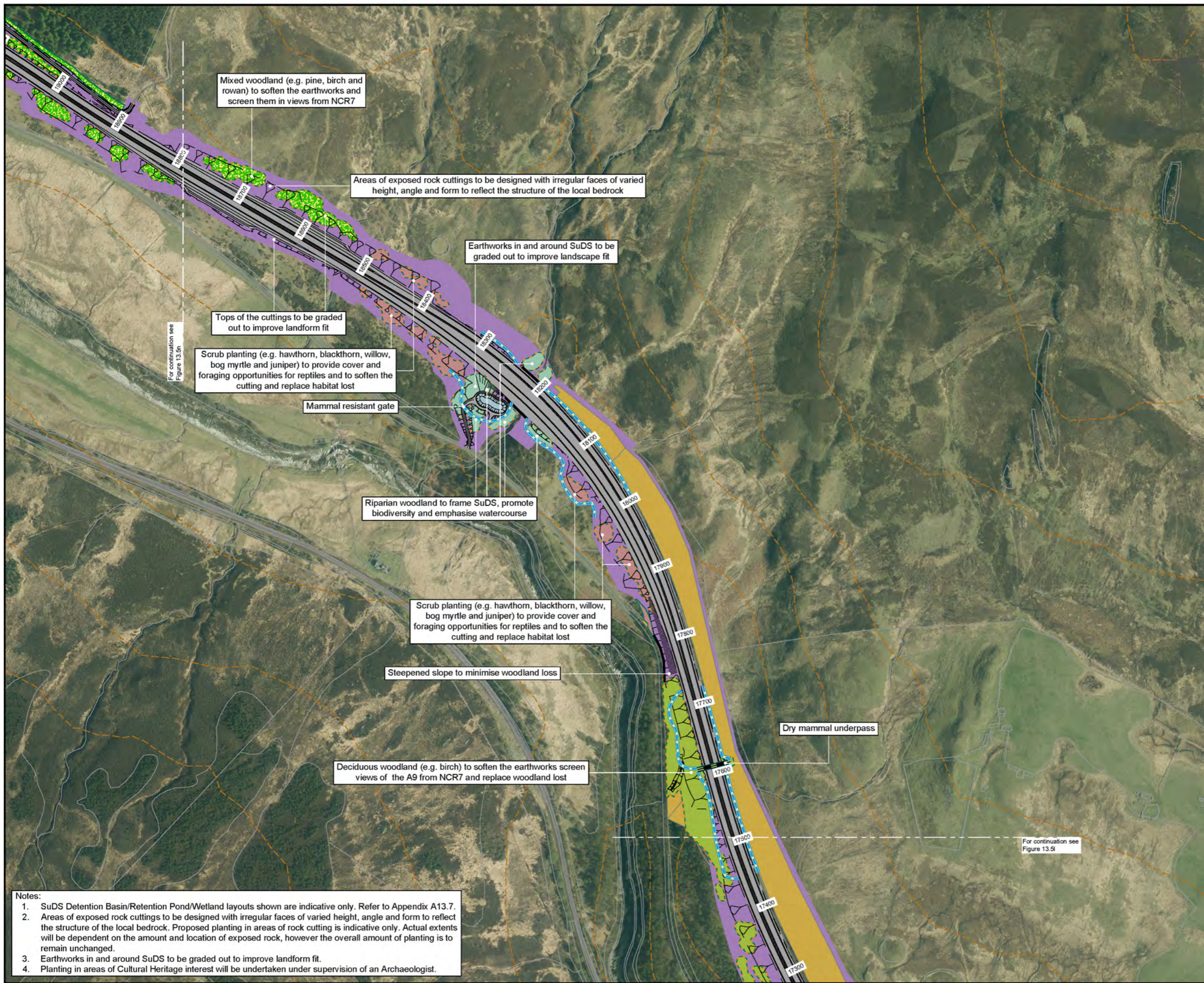
Drawing Status	WORK IN PROGRESS	DO NOT SCALE
Scale	1:5000 @ A3	
Jacobs No.	B2140005	
BIM No.	AGP05-JAC-ELS-Z_ZZZZ_EM-DR-LA-0001	
Drawing number	Figure 13.5l	Rev 0

- Notes:**
- SuDS Detention Basin/Retention Pond/Wetland layouts shown are indicative only. Refer to Appendix A13.7.
  - Areas of exposed rock cuttings to be designed with irregular faces of varied height, angle and form to reflect the structure of the local bedrock. Proposed planting in areas of rock cutting is indicative only. Actual extents will be dependent on the amount and location of exposed rock, however the overall amount of planting is to remain unchanged.
  - Earthworks in and around SuDS to be graded out to improve landform fit.
  - Planting in areas of Cultural Heritage interest will be undertaken under supervision of an Archaeologist.



This drawing is not to be used in whole or in part other than for the intended purpose and project as defined on this drawing. Refer to the contract for full terms and conditions.

Figure 13.5m



**Legend**

- Proposed Scheme (DMRB Stage 3 Design)
- SuDS Detention Basin (Green)
- SuDS Retention Pond / Wetland (Blue)
- Existing Vegetation to be Retained (inside CPO)
- Existing Contours (5m Intervals)
- Cross Section Locations (see Figure 13.6)

**Landscape and Ecological Mitigation Proposals**

- Landscape Planting Proposals
- Ecological Planting Proposals
- Ecological and Landscape Planting Proposals
- Deciduous Woodland
- Mixed Woodland
- Riparian Woodland
- Scrub
- Individual Trees
- Heath
- Species Rich Grassland
- Wet Grassland Mix
- Visibility Splay Mix
- Potential Return to Agriculture
- Bat Mitigation Area (woodland to be retained) for provision of boxes
- Red Squirrel & Bat Mitigation Area (woodland to be retained) for provision of boxes
- Dry Mammal Underpass
- Culvert with mammal provision (see individual labels)
- Otter Resistant Fencing
- Badger Resistant Fencing
- Proposed Hibernacula Locations

Rev	Rev. Date	Purpose of revision	Orig/Dwn	Check'd	Rev'd	Appr'd
0	NOV 2017	ES Publication	SDVSHF	Mk	ML	AG

**JACOBS**  
 95 Bothwell Street, Glasgow, G2 7HX, UK.  
 Tel: +44(0)141 243 8000  
 www.jacobs.com

Client  
  
 TRANSPORT SCOTLAND  
 COMHÈANAL ALBA

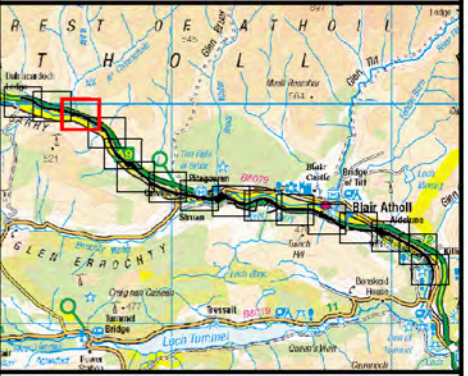
Project  
  
**A9 DUALLING**  
 PERTH TO INVERNESS  
 Killiecrankie to Glen Garry

Drawing title  
**Environmental Statement  
 Landscape and Ecological  
 Mitigation**

Drawing Status	WORK IN PROGRESS	Sheet 13 of 18
Scale	1:5000 @ A3	DO NOT SCALE
Jacobs No	B2140005	
BIM No	AGP05-JAC-ELS-Z_ZZZZ_EM-DR-LA-0001	
Drawing number	Figure 13.5m	Rev 0

- Notes:**
- SuDS Detention Basin/Retention Pond/Wetland layouts shown are indicative only. Refer to Appendix A13.7.
  - Areas of exposed rock cuttings to be designed with irregular faces of varied height, angle and form to reflect the structure of the local bedrock. Proposed planting in areas of rock cutting is indicative only. Actual extents will be dependent on the amount and location of exposed rock, however the overall amount of planting is to remain unchanged.
  - Earthworks in and around SuDS to be graded out to improve landform fit.
  - Planting in areas of Cultural Heritage interest will be undertaken under supervision of an Archaeologist.

Figure 13.5n

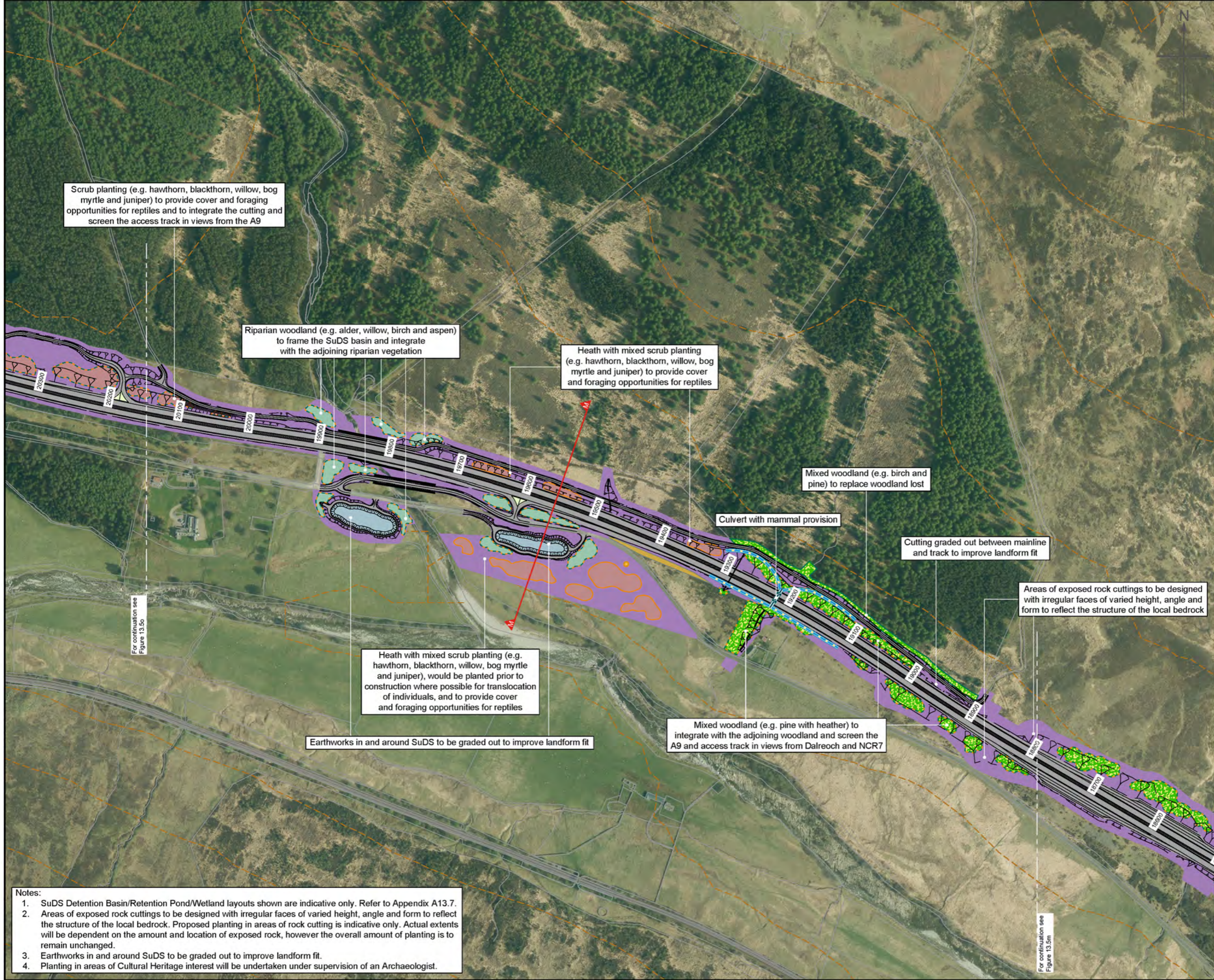


**Legend**

- Proposed Scheme (DMRB Stage 3 Design)
- SuDS Detention Basin (Green)
- SuDS Retention Pond / Wetland (Blue)
- Existing Vegetation to be Retained (inside CPO)
- Existing Contours (5m Intervals)
- Cross Section Locations (see Figure 13.6)

**Landscape and Ecological Mitigation Proposals**

- Landscape Planting Proposals
- Ecological Planting Proposals
- Ecological and Landscape Planting Proposals
- Deciduous Woodland
- Mixed Woodland
- Riparian Woodland
- Scrub
- Individual Trees
- Heath
- Species Rich Grassland
- Wet Grassland Mix
- Visibility Splay Mix
- Potential Return to Agriculture
- Bat Mitigation Area (woodland to be retained) for provision of boxes
- Red Squirrel & Bat Mitigation Area (woodland to be retained) for provision of boxes
- Dry Mammal Underpass
- Culvert with mammal provision (see individual labels)
- Otter Resistant Fencing
- Badger Resistant Fencing
- Proposed Hibernacula Locations



- Notes:**
1. SuDS Detention Basin/Retention Pond/Wetland layouts shown are indicative only. Refer to Appendix A13.7.
  2. Areas of exposed rock cuttings to be designed with irregular faces of varied height, angle and form to reflect the structure of the local bedrock. Proposed planting in areas of rock cutting is indicative only. Actual extents will be dependent on the amount and location of exposed rock, however the overall amount of planting is to remain unchanged.
  3. Earthworks in and around SuDS to be graded out to improve landform fit.
  4. Planting in areas of Cultural Heritage interest will be undertaken under supervision of an Archaeologist.

0	NOV 2017	ES Publication	SDVSHF	Mk	ML	AG
Rev	Rev. Date	Purpose of revision	Orig/Dwn	Check'd	Rev'd	Appr'd

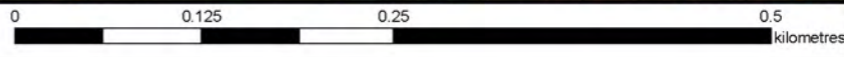
**JACOBS**  
 95 Bothwell Street, Glasgow, G2 7HX, UK.  
 Tel: +44(0)141 243 8000  
 www.jacobs.com



**A9 DUALLING**  
 PERTH TO INVERNESS  
 Killiecrankie to Glen Garry

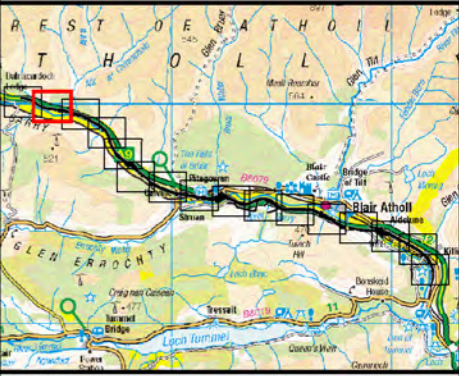
Environmental Statement  
 Landscape and Ecological  
 Mitigation

Drawing Status	WORK IN PROGRESS	DO NOT SCALE
Scale	1:5000 @ A3	
Jacobs No	B2140005	
BIM No	AGP05-JAC-ELS-Z_ZZZZ_EM-DR-LA-0001	
Drawing number	Figure 13.5n	Rev 0



This drawing is not to be used in whole or in part other than for the intended purpose and project as shown on this drawing. Refer to the contract for full terms and conditions.

Figure 13.5o

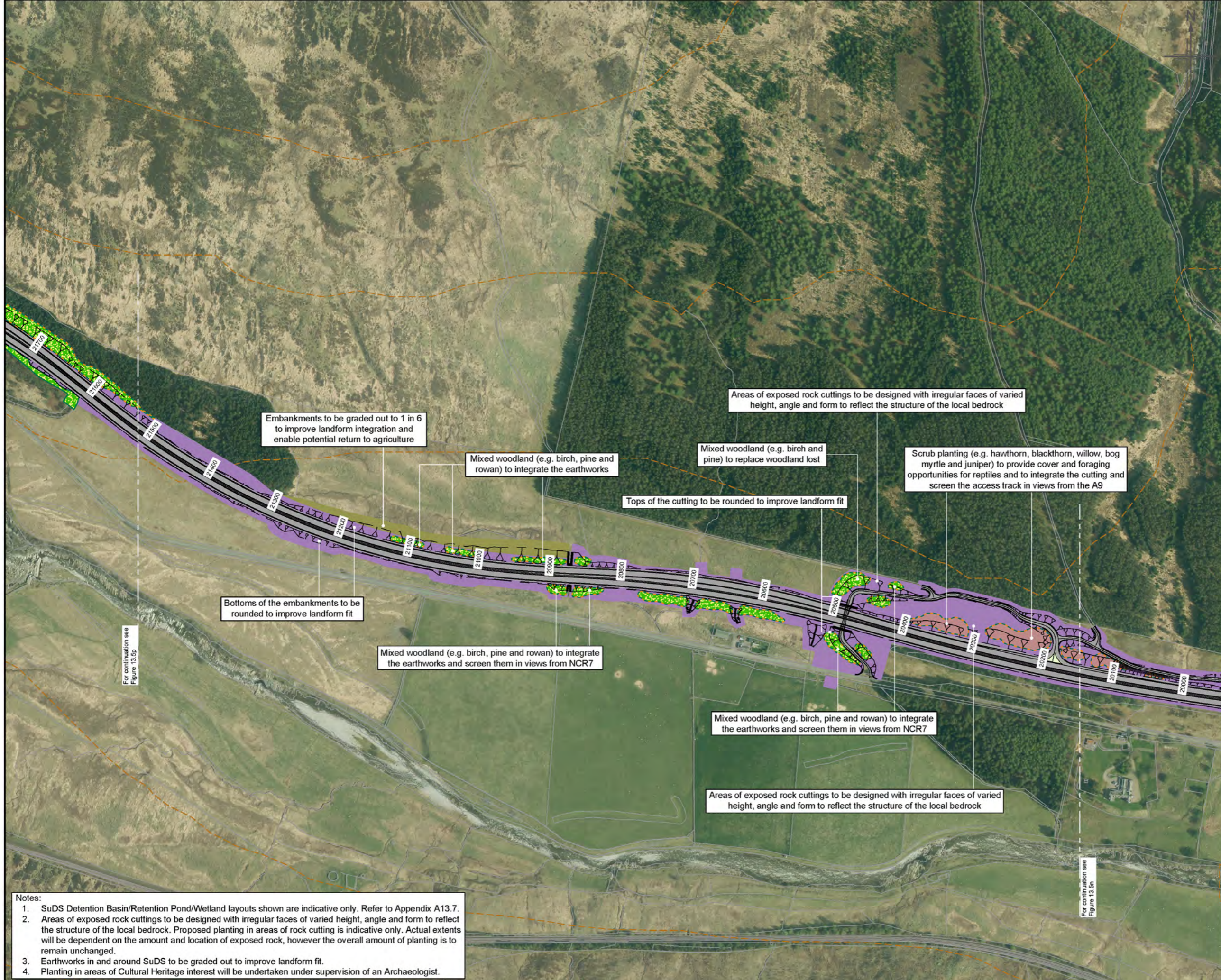


**Legend**

- Proposed Scheme (DMRB Stage 3 Design)
- SuDS Detention Basin (Green)
- SuDS Retention Pond / Wetland (Blue)
- Existing Vegetation to be Retained (inside CPO)
- Existing Contours (5m Intervals)
- Cross Section Locations (see Figure 13.6)

**Landscape and Ecological Mitigation Proposals**

- Landscape Planting Proposals
- Ecological Planting Proposals
- Ecological and Landscape Planting Proposals
- Deciduous Woodland
- Mixed Woodland
- Riparian Woodland
- Scrub
- Individual Trees
- Heath
- Species Rich Grassland
- Wet Grassland Mix
- Visibility Splay Mix
- Potential Return to Agriculture
- Bat Mitigation Area (woodland to be retained) for provision of boxes
- Red Squirrel & Bat Mitigation Area (woodland to be retained) for provision of boxes
- Dry Mammal Underpass
- Culvert with mammal provision (see individual labels)
- Otter Resistant Fencing
- Badger Resistant Fencing
- Proposed Hibernacula Locations



For continuation see Figure 13.5p

For continuation see Figure 13.5n

- Notes:**
1. SuDS Detention Basin/Retention Pond/Wetland layouts shown are indicative only. Refer to Appendix A13.7.
  2. Areas of exposed rock cuttings to be designed with irregular faces of varied height, angle and form to reflect the structure of the local bedrock. Proposed planting in areas of rock cutting is indicative only. Actual extents will be dependent on the amount and location of exposed rock, however the overall amount of planting is to remain unchanged.
  3. Earthworks in and around SuDS to be graded out to improve landform fit.
  4. Planting in areas of Cultural Heritage interest will be undertaken under supervision of an Archaeologist.

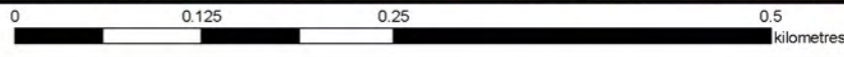
0	NOV 2017	ES Publication	SDVSHF	MK	ML	AG
Rev	Rev. Date	Purpose of revision	Orig/Dwn	Check'd	Rev'd	Appr'd

**JACOBS**  
 95 Bothwell Street, Glasgow, G2 7HX, UK.  
 Tel: +44(0)141 243 8000  
 www.jacobs.com



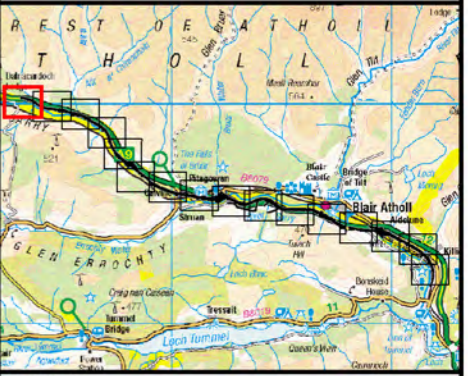
**Environmental Statement  
 Landscape and Ecological  
 Mitigation**

Drawing Status	WORK IN PROGRESS	DO NOT SCALE
Scale	1:5000 @ A3	
Jacobs No	B2140005	
BIM No	AG05-JAC-ELS-Z_ZZZZ_EM-DR-LA-0001	
Drawing number	Figure 13.5o	Rev 0



This drawing is not to be used in whole or in part other than for the intended purpose and project as defined on this drawing. Refer to the contract for full terms and conditions.

Figure 13.5p

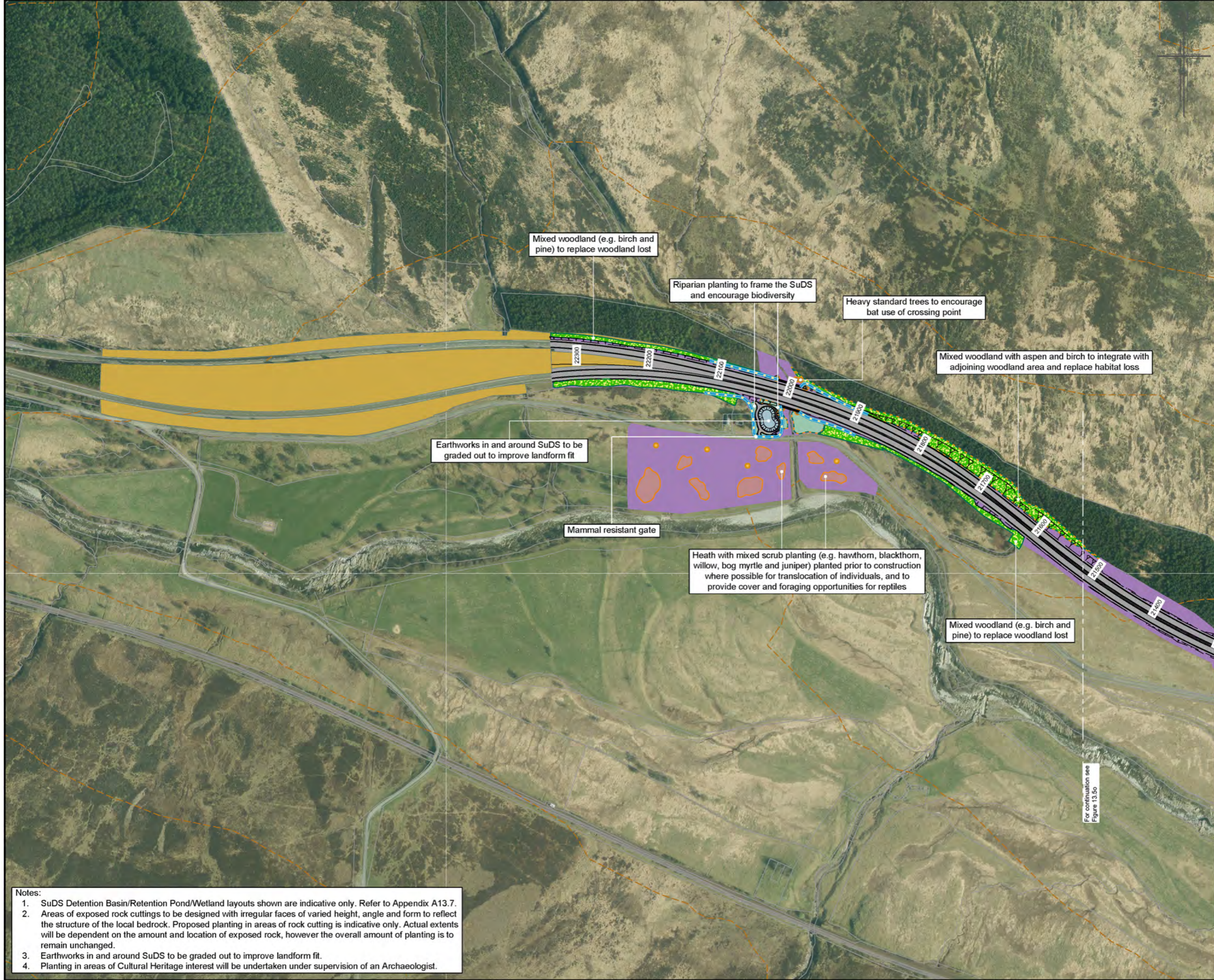


**Legend**

- Proposed Scheme (DMRB Stage 3 Design)
- SuDS Detention Basin (Green)
- SuDS Retention Pond / Wetland (Blue)
- Existing Vegetation to be Retained (inside CPO)
- Existing Contours (5m Intervals)
- Cross Section Locations (see Figure 13.6)

**Landscape and Ecological Mitigation Proposals**

- Landscape Planting Proposals
- Ecological Planting Proposals
- Ecological and Landscape Planting Proposals
- Deciduous Woodland
- Mixed Woodland
- Riparian Woodland
- Scrub
- Individual Trees
- Heath
- Species Rich Grassland
- Wet Grassland Mix
- Visibility Splay Mix
- Potential Return to Agriculture
- Bat Mitigation Area (woodland to be retained) for provision of boxes
- Red Squirrel & Bat Mitigation Area (woodland to be retained) for provision of boxes
- Dry Mammal Underpass
- Culvert with mammal provision (see individual labels)
- Otter Resistant Fencing
- Badger Resistant Fencing
- Proposed Hibernacula Locations



- Notes:**
1. SuDS Detention Basin/Retention Pond/Wetland layouts shown are indicative only. Refer to Appendix A13.7.
  2. Areas of exposed rock cuttings to be designed with irregular faces of varied height, angle and form to reflect the structure of the local bedrock. Proposed planting in areas of rock cutting is indicative only. Actual extents will be dependent on the amount and location of exposed rock, however the overall amount of planting is to remain unchanged.
  3. Earthworks in and around SuDS to be graded out to improve landform fit.
  4. Planting in areas of Cultural Heritage interest will be undertaken under supervision of an Archaeologist.

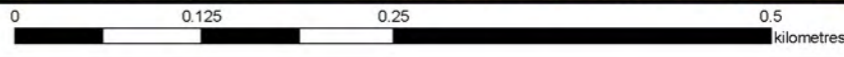
Rev	Rev. Date	Purpose of revision	Orig/Dwn	Check'd	Rev'd	Appr'd
0	NOV 2017	ES Publication	SDVSHF	MK	ML	AG

**JACOBS**  
 95 Bothwell Street, Glasgow, G2 7HX, UK.  
 Tel: +44(0)141 243 8000  
 www.jacobs.com



**Environmental Statement  
 Landscape and Ecological  
 Mitigation**

Drawing Status	WORK IN PROGRESS	DO NOT SCALE
Scale	1:5000 @ A3	
Jacobs No	B2140005	
BM No	A9P05-JAC-ELS-Z_ZZZZ_EM-DR-LA-0001	
Drawing number	Figure 13.5p	Rev 0



This drawing is not to be used in whole or in part other than for the intended purpose and project as defined on this drawing. Refer to the contract for full terms and conditions.